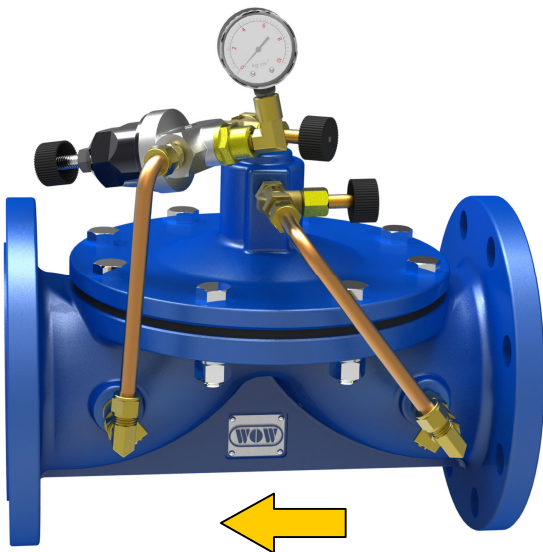




Pressure Reducing Valve Model: 47-02

TL BRAND



- Sensitive and accurate Pressure Control
- Easy adjustment and maintenance
- Excellent seal performance

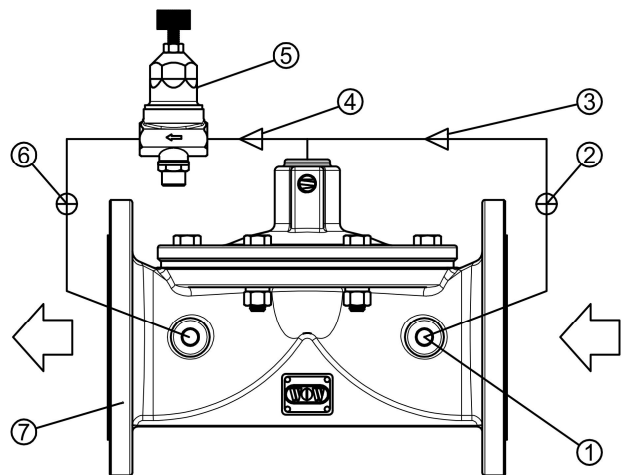
The 47-02 Pressure Reducing Valve automatically reduces a higher inlet pressure to a steady lower downstream pressure regardless of changing flow rate and/or varying inlet pressure. This valve is an accurate, pilot-operated regulator capable of holding downstream pressure to a pre-determined limit. When downstream pressure exceeds the pressure setting of the control pilot, the main valve and pilot valve close drip tight.

If a check feature is added, and a pressure reversal occurs, the downstream pressure is admitted in the main valve cover chamber closing the valve to prevent return flow.

Part List:

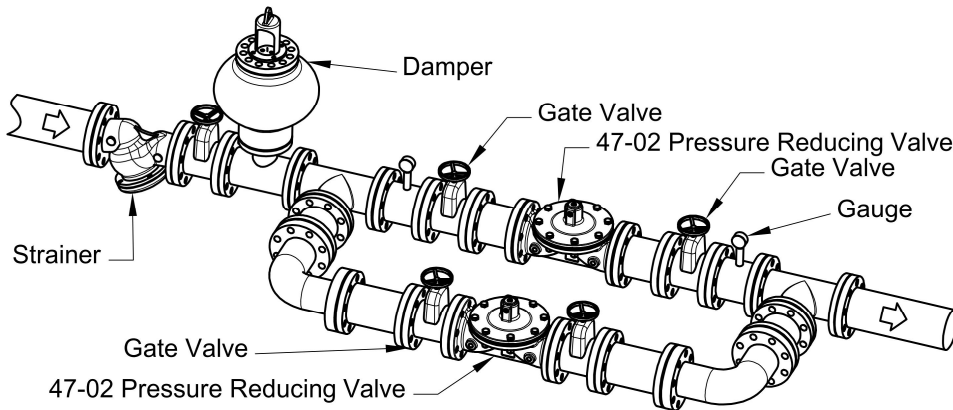
No.	Part Name
1	Strainer
2	Ball Valve
3	Needle Valve
4	Needle Valve
5	Pressure Reducing Pilot
6	Ball Valve
7	Basic Valve

Schematic Diagram:



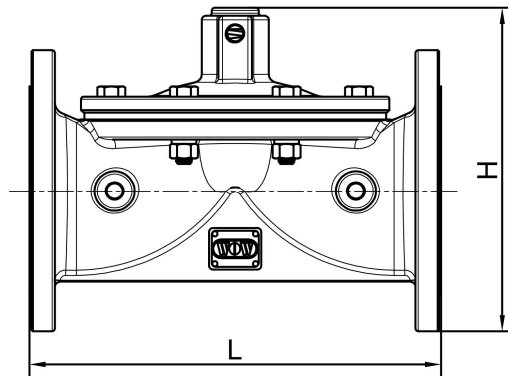
Typical Application :

Typical pressure reducing valve station using pressure reducing valves in parallel to handle wide range of flow rates. Larger valve takes care of peak loads and smaller one handles low flows.



If the pressure drop is too big than one valve can handle, using more valves in serial.

Dimension:



DN50~DN350

Size	50	65	80	100	125	150	200	250	300	350
L(mm)	200	230	285	307	370	390	460	535	580	580
H(mm)	180	200	220	242	280	315	400	450	500	500
Weight (kg)	7	9	16	18	37	48	83	120	158	165

Specification:

Size: DN50~DN350 Flanged

Temperature: 0°C ~100°C, Water

Material:

Body: Ductile Iron

Tube: Copper

Spring: Stainless Steel

Diaphragm : NBR/EPDM

Pilot Specification:

Spring Range : 0.1~5kgf/cm² , 5~9kgf/cm² ,
7~17 kgf/cm² .

Temperature : 0°C ~100°C , Water.

Material: Copper or Stainless Steel

When Ordering, Please Specify :

- 1、Valve Model Number;
 - 2、Valve Size;
 - 3、Working Pressure;
 - 4、Connection Type;
 - 5、Spring Range;
 - 6、Other Optional Parts.
-