

| | | | | |
|----------------|----------------|-------------|--------------|----------------|
| CHANGES | DETAILS | DATE | WIRTE | APPROVE |
| Rev_00 | DX200A Model | DEC.11.2014 | S.W. YUN | S.W. YUN |

DX200A

| CONTENTS | PAGE |
|---------------------------------------|-------------|
| 1. GENERAL SPECIFICATION..... | 2 |
| 2. ENGINE SYSTEM | 3 |
| 3. HYDRAULIC SYSTEM | 3 |
| 4. SWING MECHANISM..... | 4 |
| 5. TRAVEL SYSTEM..... | 4 |
| 6. UNDER CARRIAGE | 4 |
| 7. HYDRAULIC CYLINDERS..... | 5 |
| 8. FRONT | 6 |
| 9. DIMENSIONS AND WORKING RANGE | 9 |
| 10. LIFTING CAPACITIES | 11 |
| 11. PERFORMANCE DATA | 15 |
| 12. NOISE LEVEL | 15 |
| 13. SUB GROUP WEIGHT | 15 |
| 14. USER SERVICE DATA | 16 |

| | | | | |
|--------------|--------|---------------|----------|-------------|
| MODEL | DX200A | DWG No | K1025586 | 1/16 |
|--------------|--------|---------------|----------|-------------|

1. GENERAL SPECIFICATION

[DX200A]

| ITEMS | | UNIT | STD. | OPT. 1 | OPT. 2 |
|--|------------------------|---|-----------|--------|--------|
| OPERATING WEIGHT | | ton | 20.6 | 20.5 | 21.1 |
| BUCKET CAPACITY (SAE) | | m ³ | 0.92 | 0.92 | 0.92 |
| ENGINE | RATED POWER | PS/rpm | 150/1900 | | |
| | MAX. TORQUE | kg.m/rp | 61.5/1400 | | |
| SYSTEM PRESSURE (WORK/TRAVEL) | | kg/cm ² | 350 / 350 | | |
| SWING SPEED | | rpm | 11.3 | | |
| TRAVEL SPEED (High/Low) | | km/h | 5.8/3.2 | | |
| GRADEABILITY | | %(deg) | 70 (35°) | | |
| SHOE WIDTH | | mm | 600 | | 800 |
| GROUND PRESSURE | | kg/cm ² | 0.48 | ← | 0.37 |
| DIGGING FORCE | BUCKET | ton | 15.2 | ← | ← |
| | ARM | ton | 10.8 | 12.6 | 10.8 |
| WORKING RANGE | MAX. DIGGING REACH | mm | 9900 | 9480 | 9900 |
| | MAX. DIGGING DEPTH | mm | 6620 | 6110 | 6620 |
| | MAX. DIGGING HEIGHT | mm | 9750 | 9630 | 9750 |
| | REAR SWING RADIUS | mm | 2750 | ← | ← |
| | MIN. SWING RADIUS | mm | 3410 | ← | ← |
| TRANSPOR - TATION DIMENSION | OVERALL LENGTH | mm | 9485 | 9500 | 9485 |
| | OVERALL WIDTH | mm | 2800 | ← | 3000 |
| | OVERALL WIDTH (Narrow) | mm | - | - | - |
| | OVERALL HEIGHT | mm | 3005 | 3110 | 3005 |
| | GROUND CLEARANCE | mm | 480 | ← | ← |
| | TRACK LENGTH | mm | 4065 | ← | ← |
| | TRACK GAUGE | mm | 2200 | ← | ← |
| TRACK GAUGE (Narrow) | mm | - | - | - | |
| OPTION ATTACHMENT | | <ul style="list-style-type: none"> • BOOM : STD. 5700mm • ARM : STD. 2900mm, SHORT 2400mm, • BUCKET (PCSA) : STD. 0.92 m³ OPT. 0.81 m³ | | | |
| <ul style="list-style-type: none"> • STANDARD : STD. BOOM(5700mm), STD. ARM(2900mm), STD. BUCKET(0.92 m³), 600mm shoe • OPTION 1 : STD. BOOM(5700mm), SHORT ARM(2400mm), OPT. BUCKET(0.92 m³), 600mm shoe • OPTION 2 : STD. BOOM(5700mm), STD. ARM(2900mm), STD. BUCKET(0.92 m³), 800mm shoe | | | | | |

| | | | | |
|-------|--------|--------|----------|------|
| MODEL | DX200A | DWG No | K1025586 | 2/16 |
|-------|--------|--------|----------|------|

2. ENGINE SYSTEM

1) ENGINE

| | | |
|---|---|-----------------------|
| MAKER & MODEL | : | DOOSAN DB58TIS |
| RATED HORSE POWER | : | |
| GROSS POWER : 115 kW(157 PS, 154 HP) @1900rpm (SAE J1995) | | |
| NET POWER : 110 kW(150 PS,148 HP) @1900rpm (SAE J1349) | | |
| MAX. TORQUE | : | 61.5 kgf.m @ 1400 rpm |
| DISPLACEMENT | : | 5785 cc |
| No. OF CYLINDER | : | 6 |
| BORE DIA. & STROKE | : | Φ 102 x 118 mm |

2) ALTERNATOR

| | | |
|----------------|---|------|
| VOLTAGE | : | 24 V |
| RATING AMPERES | : | 60 A |

3) BATTERY

| | | |
|----------------|---|----------|
| SYSTEM VOLTAGE | : | 24 V |
| QUANTITY | : | 12 V x 2 |
| CAPACITY (AMP) | : | 100 AH |

3. HYDRAULIC SYSTEM

1) MAIN PUMP

| | | |
|----------------|---|---------------------|
| DISPLACEMENT | : | 2 x 117.0 cc/rev |
| MAX. FLOW RATE | : | 2 x 222.3 Liter/min |

2) PILOT PUMP

| | | |
|----------------|---|----------------|
| DISPLACEMENT | : | 15 cc/rev |
| MAX. FLOW RATE | : | 28.5 Liter/min |

3) CONTROL VALVE

| | | |
|----------------------------|---|-------------------------|
| RELIEF VALVE PRESSURE | : | 350 kgf/cm ² |
| PORT RELIEF VALVE PRESSURE | : | 360 kgf/cm ² |

| | | | | |
|-------|--------|--------|----------|------|
| MODEL | DX200A | DWG No | K1025586 | 3/16 |
|-------|--------|--------|----------|------|

4. SWING MECHANISM

1) SWING PERFORMANCE

MAX. SWING SPEED (EFF.=0.99) : 11.3 rpm
MAX. SWING TORQUE (EFF.=0.77) : 6,460 kgf.m

5. TRAVEL SYSTEM

1) TRAVELLING PERFORMANCE

TRAVELLING SPEED (EFF.=96/95%) : 3.2 / 5.8 km/hr
TRACTION FORCE (EFF.=79/77%) : 23.1 / 12.2 ton

6. UNDER CARRIAGE

1) ROLLERS ; LOWER

FLANGE TYPE : SINGLE
Q'TY PER SIDE : 7 ea – STD TRACK

2) ROLLERS ; UPPER

FLANGE TYPE : SHAFT
Q'TY PER SIDE : 2 ea

3) TRACK SHOE

MAKER : HYUNDAI STEEL
No. OF SHOE PER SIDE : 45 ea

| SHOE WIDTH (mm) | GROUND PRESSURE (kgf/cm ²) | MACHINE WEIGHT (ton) |
|-----------------|--|----------------------|
| STD. 600G | 0.48 | 20.6 |
| OPT. 800G | 0.37 | 21.1 |

| | | | | |
|-------|--------|--------|----------|------|
| MODEL | DX200A | DWG No | K1025586 | 4/16 |
|-------|--------|--------|----------|------|

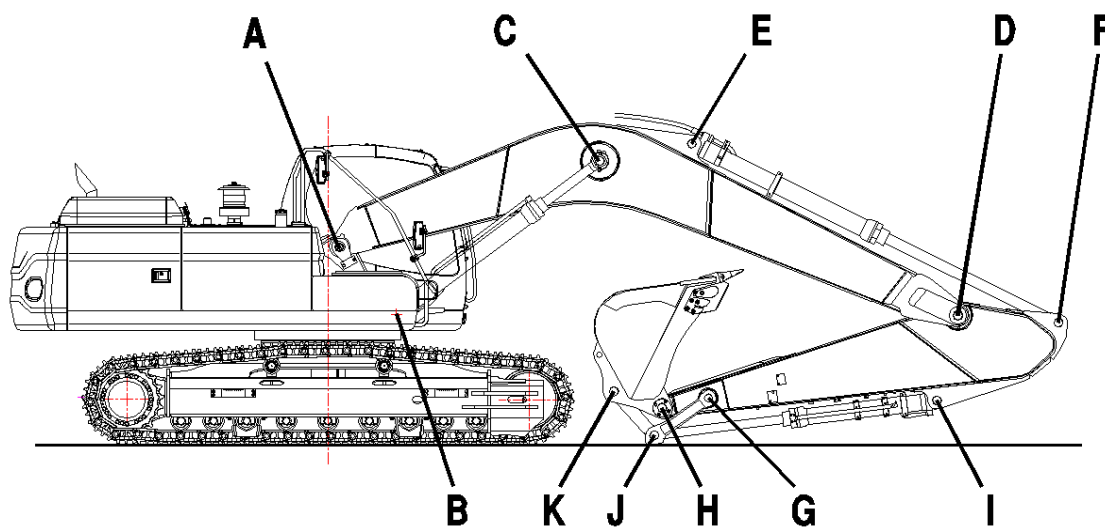
7. HYDRAULIC CYLINDERS

| | BOOM | ARM | BUCKET |
|------------------|------|------|--------|
| QUANTITY | 2 | 1 | 1 |
| BORE | 120 | 135 | 120 |
| STROKE | 1260 | 1450 | 1060 |
| ROD DIA. | 85 | 95 | 80 |
| CLOSED LENGTH | 1782 | 2010 | 1630 |
| HEAD END CUSHION | X | O | X |
| ROD END CUSHION | O | O | O |

| | | | | |
|-------|--------|--------|----------|------|
| MODEL | DX200A | DWG No | K1025586 | 5/16 |
|-------|--------|--------|----------|------|

8. FRONT

1) FRONT LINK PIN SIZES



| POINT | DIA. (mm) | LENGTH (mm) | SLR FRONT (D/L) |
|-------|-----------|-------------|-----------------|
| A | 90 | 782 | ← |
| B | 80 | 196 | ← |
| C | 80 | 782 | ← |
| D | 90 | 519 | ← |
| E | 80 | 220 | ← |
| F | 80 | 219 | ← |
| G | 71 | 425 | 65/354 |
| H | 80 | 507 | 65/424 |
| I | 80 | 205 | 65/187 |
| J | 80 | 425 | 65/354 |
| K | 80 | 507 | 65/424 |

MODEL

DX200A

DWG No

K1025586

6/16

2) FRONT ATTACHMENTS

2-1) BOOM

| | LENGTH (mm) | WEIGHT (kg) |
|-----------|-------------|-------------|
| STD. BOOM | 5700 | 1463 |

2-2) ARM

| | LENGTH (mm) | WEIGHT (kg) | DIGGING FORCE |
|-----------|-------------|-------------|------------------------|
| STD. ARM | 2900 | 656 | [SAE] 10.5, [ISO] 10.8 |
| SHORT ARM | 2400 | 574 | [SAE] 12.2, [ISO] 12.6 |

2-3) BUCKET (DX200A)

| | CAPACITY (m ³) | | | BUCKET WIDTH (mm) | | DIGGING FORCE |
|-------------|----------------------------|------|--------|-------------------|------------|---------------|
| | CECE | SAE | STRUCK | W/CUTTER | W/O CUTTER | |
| STD. BUCKET | 0.81 | 0.92 | 0.69 | 1236 | 1172 | [SAE] 13.3 |
| OPT. BUCKET | 0.72 | 0.81 | 0.62 | 1126 | 1064 | [ISO] 15.2 |

2-4) BUCKET & ARM COMBINATIONS

| Bucket Type | Capacity (m ³) | | Width (mm) | | Weight (kg) | 5.7m Boom | |
|-------------------------------------|----------------------------|------|------------|-------------|-------------|-----------|--------|
| | SAE/PCSA | CECE | W/O Cutter | With Cutter | | 2.4m A | 2.9m A |
| | GP | 0.81 | 0.72 | 1064 | | 1126 | 654 |
| | 0.92 | 0.81 | 1172 | 1236 | 707 | A | B |
| Maximum load pin-on(payload+bucket) | | | | | | 2829 | 2586 |

Based on ISO 10567 and SAE J296, arm length without quick change clamp

A : Suitable for materials with density of 2100kg/m³ (3500lb/yd³) or less

B : Suitable for materials with density of 1800kg/m³ (3000lb/yd³) or less

C : Suitable for materials with density of 1500kg/m³ (2500lb/yd³) or less

D : Suitable for materials with density of 1200kg/m³ (2000lb/yd³) or less

X : Not recommended

3) OPTION PIPINGS

| | | | | |
|-------|--------|--------|----------|------|
| MODEL | DX200A | DWG No | K1025586 | 7/16 |
|-------|--------|--------|----------|------|

3-1) ONE-WAY PIPING

MAIN & PILOT PIPING : *OPTION*
FRONT SUPPLY PIPING : *OPTION*
AVAILABLE ATTACHMENT : *BREAKER*

3-2) PE3C PIPING

MAIN & PILOT PIPING : *OPTION*
FRONT SUPPLY PIPING : *OPTION*
AVAILABLE ATTACHMENT : *BUCKET TILT CYLINDER, CLAMSHELL
CRUSHER*

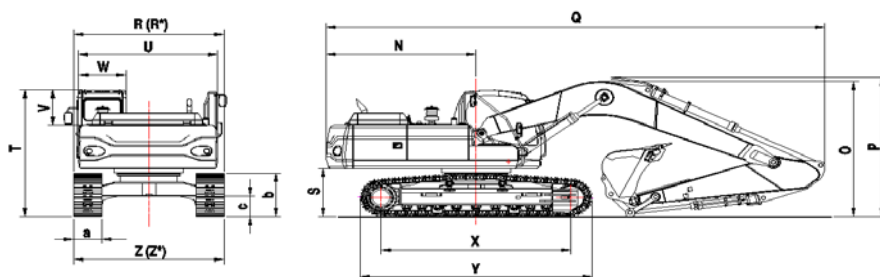
3-3) PERO PIPING

MAIN & PILOT PIPING : *OPTION*
FRONT SUPPLY PIPING : *OPTION*
AVAILABLE ATTACHMENT : *ROTATING GRAPPLE*

| | | | | |
|-------|--------|--------|----------|------|
| MODEL | DX200A | DWG No | K1025586 | 8/16 |
|-------|--------|--------|----------|------|

9. DIMENSIONS AND WORKING RANGE

1) DIMENSIONS



| | | | | |
|-------------------------|-------------------|---|------|------|
| BOOM TYPE (ONE PIECE) | (mm) | | 5700 | |
| ARM TYPE | (mm) | | 2900 | 2400 |
| BUCKET TYPE (PCSA) | (m ³) | | 0.92 | 1.05 |
| TAIL SWING RADIUS | (mm) | N | 2750 | ← |
| SHIPPING HEIGHT (BOOM) | (mm) | O | 2940 | 3045 |
| SHIPPING HEIGHT (HOSE) | (mm) | P | 3005 | 3110 |
| SHIPPING LENGTH | (mm) | Q | 9485 | 9500 |
| SHIPPING WIDTH | (mm) | | 2800 | ← |
| C/WEIGHT CLEARANCE | (mm) | S | 1055 | ← |
| HEIGHT OVER CAB. | (mm) | T | 2975 | ← |
| HOUSE WIDTH | (mm) | U | 2710 | ← |
| CAB. HEIGHT ABOVE HOUSE | (mm) | V | 845 | ← |
| CAB. WIDTH | (mm) | W | 960 | ← |
| TUMBLER DISTANCE | (mm) | | 3270 | ← |
| TRACK LENGTH | (mm) | | 4065 | ← |
| UNDERCARRIAGE WIDTH | (mm) | | 2800 | ← |
| SHOE WIDTH | (mm) | a | 600 | ← |
| TRACK HEIGHT | (mm) | | 947 | ← |
| CAR BODY CLEARANCE | (mm) | c | 480 | ← |

MODEL

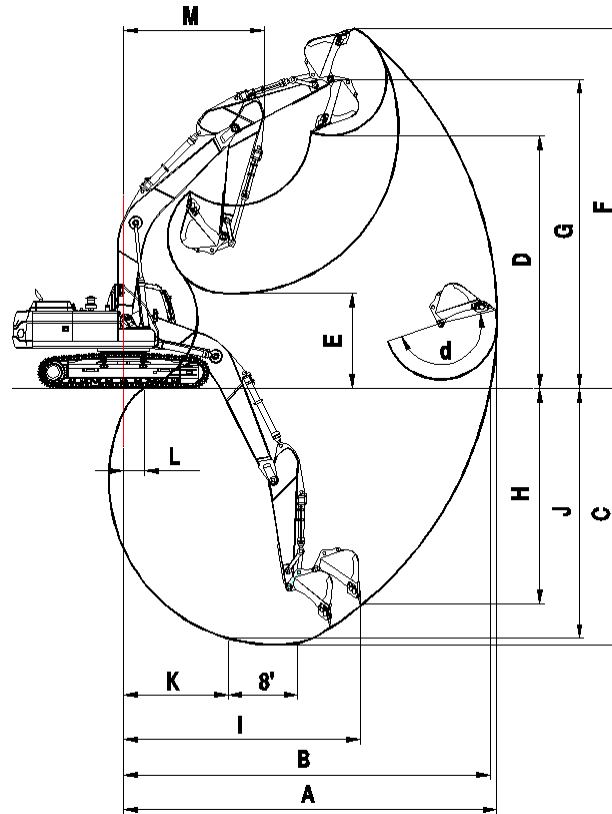
DX200A

DWG No

K1025586

9/16

2) WORKING RANGE

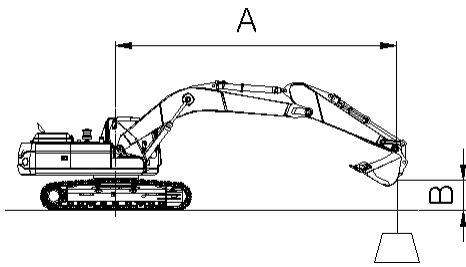


| | | | | |
|-----------------------------|-------------------|---|------|------|
| BOOM TYPE (ONE PIECE) | (mm) | | 5700 | |
| ARM TYPE | (mm) | | 2900 | 2400 |
| BUCKET TYPE (PCSA) | (m ³) | | 0.92 | 1.05 |
| MAX. DIGGING REACH | (mm) | A | 9900 | 9480 |
| MAX. DIGGING REACH (GROUND) | (mm) | B | 9730 | 9300 |
| MAX. DIGGING DEPTH | (mm) | C | 6620 | 6110 |
| MAX. LOADING HEIGHT | (mm) | D | 6990 | 6830 |
| MIN. LOADING HEIGHT | (mm) | E | 2555 | 3070 |
| MAX. DIGGING HEIGHT | (mm) | F | 9750 | 9630 |
| MAX. BUCKET PIN HEIGHT | (mm) | G | 8450 | 8299 |
| MAX. VERTICAL WALL DEPTH | (mm) | H | 5640 | 5390 |
| MAX. RADIUS VERTICAL | (mm) | I | 6410 | 6050 |
| MAX. DEPTH TO 8' LINE | (mm) | J | 6430 | 5910 |
| MIN. RADIUS 8' LINE | (mm) | K | 2865 | 2880 |
| MIN. DIGGING REACH | (mm) | L | 519 | 1698 |
| MIN. SWING RADIUS | (mm) | M | 3410 | 3410 |
| BUCKET ANGLE | (deg) | d | 166 | 166 |

| | | | | |
|-------|--------|--------|----------|-------|
| MODEL | DX200A | DWG No | K1025586 | 10/16 |
|-------|--------|--------|----------|-------|

10. LIFTING CAPACITIES

- 5.7m Boom, 2.9m Arm, 600mm SHOE, STD TRACK (1/2)



TRACK WIDTH : 2.80m (9' 2") STD TRACK
 BOOM : 5.7m (18' 8")
 ARM : 2.9m (9' 6")
 BUCKET : SAE 0.92m³ HEAPED
 (CECE 0.81m³)
 SHOE : 600mm (24")
 COUNTER WEIGHT : 3,800 kg (8,377 lb)
 UNIT : 1000 kg (1000 lb)



: RATING OVER FRONT



: RATING OVER SIDE OR 360 degree

METRIC

| A(m) \ B(m) | 1 | | 2 | | 3 | | 4 | |
|-------------|--------|--------|--------|--------|--------|--------|-------|------|
| | | | | | | | | |
| 8 | | | | | | | | |
| 7 | | | | | | | | |
| 6 | | | | | | | | |
| 5 | | | | | | | | |
| 4 | | | | | | | | |
| 3 | | | | | *10.65 | *10.65 | *7.60 | 7.3 |
| 2 | | | | | *8.55 | *8.55 | *8.98 | 6.75 |
| 1 | | | | | *7.27 | *7.27 | *9.97 | 6.34 |
| 0(GROUND) | | | *4.93 | *4.93 | *8.28 | *8.28 | 10.16 | 6.12 |
| 1 | | | *7.18 | *7.18 | *10.09 | 9.77 | 10.04 | 6.02 |
| 2 | *8.27 | *8.27 | *9.39 | *9.39 | *12.45 | 9.83 | 10.03 | 6.01 |
| 3 | *10.29 | *10.29 | *11.87 | *11.87 | *12.31 | 9.97 | *9.56 | 6.07 |
| 4 | | | *14.26 | *14.26 | *10.72 | 10.19 | *8.45 | 6.21 |
| 5 | | | | | *8.37 | *8.37 | *6.67 | 6.43 |

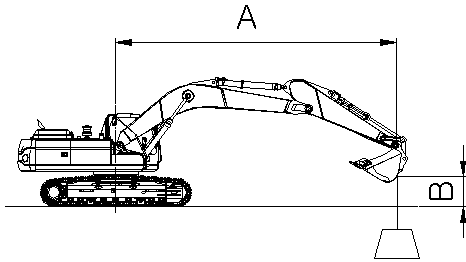
FEET

| A(m) \ B(m) | 5 | | 10 | | 15 | | 20 | |
|-------------|--------|--------|--------|--------|--------|-------|--------|-------|
| | | | | | | | | |
| 25 | | | | | | | *7.49 | *7.49 |
| 20 | | | | | | | *8.80 | *8.80 |
| 15 | | | | | | | *9.77 | 8.75 |
| 10 | | | *22.69 | *22.69 | *14.52 | 13.04 | *11.33 | 8.16 |
| 5 | | | *17.31 | *17.31 | *17.80 | 11.78 | 11.7 | 7.56 |
| 0(GROUND) | | | *18.78 | *18.78 | 17.81 | 11 | 11.21 | 7.11 |
| 5 | *16.90 | *16.90 | *25.28 | 20.98 | 17.49 | 10.72 | 10.97 | 6.89 |
| 10 | *24.37 | 24.37 | *26.65 | 21.37 | 17.59 | 10.81 | 11.01 | 6.93 |
| 15 | | | *20.69 | *20.69 | *14.62 | 11.25 | | |

1. RATINGS ARE BASED ON SAE J1097
2. LOAD POINT IS THE HOOK ON THE BACK OF THE BUCKET.
3. * RATED LOADS ARE BASED ON HYDRAULIC CAPACITY.
4. RATED LOADS DO NOT EXCEED 87% OF HYD. CAPACITY OR 75% OF TIPPING CAPACITY.

| | | | | |
|-------|--------|--------|----------|-------|
| MODEL | DX200A | DWG No | K1025586 | 11/16 |
|-------|--------|--------|----------|-------|

- 5.7m Boom, 2.9m Arm, 600mm SHOE, STD TRACK (2/2)



TRACK WIDTH : 2.80m (9' 2") STD TRACK
 BOOM : 5.7m (18' 8")
 ARM : 2.9m (9' 6")
 BUCKET : SAE 0.92m³ HEAPED
 (CECE 0.81m³)
 SHOE : 600mm (24")
 COUNTER WEIGHT : 3,800 kg (8,377 lb)
 UNIT : 1000 kg (1000 lb)



: RATING OVER FRONT



: RATING OVER SIDE OR 360 degree

METRIC

| A(m) \ B(m) | 5 | | 6 | | 7 | | 8 | | MAX. REACH | | | |
|-------------|------|------|------|------|------|------|------|------|------------|------|------|-------|
| | | | | | | | | | | | A(m) | |
| 8 | | | | | | | | | | 3.00 | 3.00 | @5.95 |
| 7 | | | | | | | | | | 2.82 | 2.82 | @6.86 |
| 6 | | | 4.02 | 4.02 | 3.86 | 3.18 | | | | 2.75 | 2.75 | @7.51 |
| 5 | | | 4.30 | 4.15 | 4.11 | 3.12 | | | | 2.75 | 2.39 | @7.99 |
| 4 | 5.27 | 5.27 | 4.72 | 3.98 | 4.35 | 3.03 | 3.58 | 2.34 | | 2.80 | 2.15 | @8.32 |
| 3 | 6.10 | 5.11 | 5.23 | 3.79 | 4.43 | 2.91 | 3.51 | 2.27 | | 2.92 | 2 | @8.52 |
| 2 | 6.93 | 4.8 | 5.54 | 3.6 | 4.3 | 2.79 | 3.43 | 2.2 | | 3.02 | 1.91 | @8.60 |
| 1 | 7.18 | 4.54 | 5.35 | 3.43 | 4.18 | 2.68 | 3.36 | 2.13 | | 3 | 1.88 | @8.56 |
| 0(GROUND) | 6.97 | 4.36 | 5.21 | 3.3 | 4.09 | 2.59 | 3.3 | 2.08 | | 3.05 | 1.91 | @8.40 |
| 1 | 6.86 | 4.26 | 5.13 | 3.22 | 4.03 | 2.54 | 3.27 | 2.05 | | 3.2 | 2.01 | @8.11 |
| 2 | 6.82 | 4.23 | 5.09 | 3.19 | 4.01 | 2.52 | | | | 3.49 | 2.19 | @7.68 |
| 3 | 6.86 | 4.26 | 5.12 | 3.22 | 4.05 | 2.56 | | | | 3.98 | 2.51 | @7.09 |
| 4 | 6.78 | 4.35 | 5.22 | 3.31 | | | | | | 4.88 | 3.1 | @6.27 |
| 5 | 5.19 | 4.54 | | | | | | | | 4.96 | 4.36 | @5.14 |

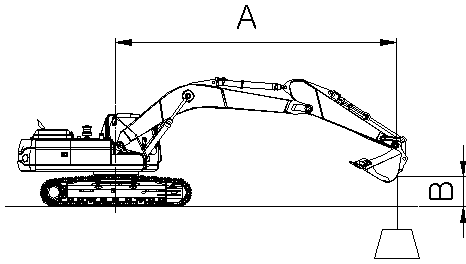
FEET

| A(ft) \ B(ft) | 25 | | MAX. REACH | | |
|---------------|------|------|------------|-------|--------|
| | | | | | A(ft) |
| 25 | | | *6.43 | *6.43 | @20.78 |
| 20 | | | *6.07 | *6.07 | @24.46 |
| 15 | 8.73 | 5.77 | *6.10 | 5.02 | @26.74 |
| 10 | 8.44 | 5.5 | *6.42 | 4.42 | @27.94 |
| 5 | 8.12 | 5.2 | 6.62 | 4.17 | @28.20 |
| 0(GROUND) | 7.87 | 4.97 | 6.73 | 4.21 | @27.56 |
| -5 | 7.77 | 4.87 | 7.35 | 4.6 | @25.94 |
| -10 | | | 8.84 | 5.58 | @23.14 |
| -15 | | | *11.06 | 8.14 | @18.60 |

1. RATINGS ARE BASED ON SAE J1097
2. LOAD POINT IS THE HOOK ON THE BACK OF THE BUCKET.
3. * RATED LOADS ARE BASED ON HYDRAULIC CAPACITY.
4. RATED LOADS DO NOT EXCEED 87% OF HYD. CAPACITY OR 75% OF TIPPING CAPACITY.

| | | | | |
|-------|--------|--------|----------|-------|
| MODEL | DX200A | DWG No | K1025586 | 12/16 |
|-------|--------|--------|----------|-------|

- OPTION 5.7m Boom, 2.4m Arm, 600mm SHOE, STD TRACK (1/2)



TRACK WIDTH : 2.80m (9' 2") STD TRACK
 BOOM : 5.7m (18' 8")
 ARM : 2.4m (7' 10")
 BUCKET : SAE 0.92m³ HEAPED
 (CECE 0.81m³)
 SHOE : 600mm (24")
 COUNTER WEIGHT : 3,800 kg (8,377 lb)
 UNIT : 1000 kg (1000 lb)



: RATING OVER FRONT



: RATING OVER SIDE OR 360 degree

METRIC

| A(m) \ B(m) | 2 | | 3 | | 4 | | 5 | |
|-------------|--------|--------|--------|-------|-------|-------|-------|-------|
| | | | | | | | | |
| 8 | | | | | | | | |
| 7 | | | | | | | | |
| 6 | | | | | | | | |
| 5 | | | | | | | *5.15 | *5.15 |
| 4 | | | *9.25 | *9.25 | *7.00 | *7.00 | *5.84 | 5.34 |
| 3 | | | | | *8.43 | 7.1 | *6.64 | 5.03 |
| 2 | | | | | *9.68 | 6.61 | *7.40 | 4.75 |
| 1 | | | | | 10.35 | 6.29 | 7.15 | 4.53 |
| 0(GROUND) | | | *7.25 | *7.25 | 10.18 | 6.15 | 7 | 4.39 |
| 1 | *7.02 | *7.02 | *10.03 | 9.96 | 10.13 | 6.11 | 6.93 | 4.33 |
| 2 | *10.04 | *10.04 | *12.71 | 10.06 | *9.98 | 6.14 | 6.93 | 4.33 |
| 3 | *13.33 | *13.33 | *11.43 | 10.23 | *9.12 | 6.24 | 7 | 4.39 |
| 4 | *12.02 | *12.02 | *9.57 | *9.57 | *7.74 | 6.41 | *6.21 | 4.52 |
| 5 | | | | | *5.42 | *5.42 | | |

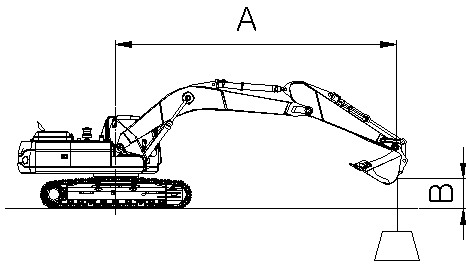
FEET

| A(m) \ B(m) | 5 | | 10 | | 15 | | 20 | |
|-------------|--------|--------|--------|--------|--------|--------|--------|------|
| | | | | | | | | |
| 25 | | | | | | | | |
| 20 | | | | | | | *9.87 | 9.02 |
| 15 | | | | | *12.63 | *12.63 | *10.73 | 8.66 |
| 10 | | | | | *15.92 | 12.79 | *12.19 | 8.11 |
| 5 | | | | | 18.54 | 11.66 | 11.7 | 7.57 |
| 0(GROUND) | | | *16.53 | *16.53 | 17.85 | 11.06 | 11.29 | 7.2 |
| 5 | *17.64 | *17.64 | *26.23 | 21.43 | 17.7 | 10.93 | 11.15 | 7.07 |
| 10 | *27.47 | *27.47 | *24.75 | 21.93 | *17.67 | 11.12 | 11.3 | 7.2 |
| 15 | | | *17.72 | *17.72 | *12.68 | 11.72 | | |

1. RATINGS ARE BASED ON SAE J1097
2. LOAD POINT IS THE HOOK ON THE BACK OF THE BUCKET.
3. * RATED LOADS ARE BASED ON HYDRAULIC CAPACITY.
4. RATED LOADS DO NOT EXCEED 87% OF HYD. CAPACITY OR 75% OF TIPPING CAPACITY.

| | | | | |
|-------|--------|--------|----------|-------|
| MODEL | DX200A | DWG No | K1025586 | 13/16 |
|-------|--------|--------|----------|-------|

- OPTION 5.7m Boom, 2.4m Arm, 600mm SHOE, STD TRACK (2/2)



TRACK WIDTH : 2.80m (9' 2") STD TRACK
 BOOM : 5.7m (18' 8")
 ARM : 2.4m (7' 10")
 BUCKET : SAE 0.92m³ HEAPED
 (CECE 0.81m³)
 SHOE : 600mm (24")
 COUNTER WEIGHT : 3,800 kg (8,377 lb)
 UNIT : 1000 kg (1000 lb)



: RATING OVER FRONT



: RATING OVER SIDE OR 360 degree

METRIC

| A(m) \ B(m) | 6 | | 7 | | 8 | | MAX. REACH | | |
|-------------|-------|------|-------|------|------|------|------------|-------|-------|
| | | | | | | | | | A(m) |
| 8 | | | | | | | *4.18 | *4.18 | @5.33 |
| 7 | *4.48 | 4.23 | | | | | *3.91 | 3.84 | @6.31 |
| 6 | *4.50 | 4.2 | *3.89 | 3.14 | | | *3.80 | 3.11 | @7.03 |
| 5 | *4.75 | 4.1 | *4.51 | 3.1 | | | *3.79 | 2.68 | @7.54 |
| 4 | *5.15 | 3.94 | 4.54 | 3.02 | | | 3.67 | 2.4 | @7.89 |
| 3 | *5.63 | 3.77 | 4.43 | 2.91 | 3.52 | 2.29 | 3.44 | 2.23 | @8.10 |
| 2 | 5.52 | 3.59 | 4.31 | 2.8 | 3.46 | 2.23 | 3.33 | 2.14 | @8.18 |
| 1 | 5.36 | 3.45 | 4.21 | 2.71 | 3.4 | 2.17 | 3.31 | 2.11 | @8.14 |
| 0(GROUND) | 5.25 | 3.35 | 4.13 | 2.64 | | | 3.38 | 2.15 | @7.97 |
| 1 | 5.19 | 3.29 | 4.1 | 2.61 | | | 3.58 | 2.27 | @7.67 |
| 2 | 5.19 | 3.29 | 4.11 | 2.62 | | | 3.94 | 2.51 | @7.21 |
| 3 | 5.24 | 3.34 | | | | | 4.59 | 2.94 | @6.57 |
| 4 | | | | | | | *5.20 | 3.76 | @5.68 |
| 5 | | | | | | | *4.84 | *4.84 | @4.39 |

FEET

| A(ft) \ B(ft) | 25 | | MAX. REACH | | |
|---------------|------|------|------------|-------|--------|
| | | | | | A(ft) |
| 25 | | | *8.94 | *8.94 | @18.84 |
| 20 | | | *8.38 | 6.99 | @22.85 |
| 15 | 8.69 | 5.74 | *8.41 | 5.62 | @25.28 |
| 10 | 8.46 | 5.53 | 7.61 | 4.94 | @26.54 |
| 5 | 8.19 | 5.28 | 7.29 | 4.67 | @26.82 |
| 0(GROUND) | 7.99 | 5.1 | 7.46 | 4.75 | @26.14 |
| -5 | | | 8.25 | 5.25 | @24.43 |
| -10 | | | 10.21 | 6.54 | @21.43 |
| -15 | | | *11.18 | 10.26 | @16.42 |

1. RATINGS ARE BASED ON SAE J1097
2. LOAD POINT IS THE HOOK ON THE BACK OF THE BUCKET.
3. * RATED LOADS ARE BASED ON HYDRAULIC CAPACITY.
4. RATED LOADS DO NOT EXCEED 87% OF HYD. CAPACITY OR 75% OF TIPPING CAPACITY.

| | | | | |
|-------|--------|--------|----------|-------|
| MODEL | DX200A | DWG No | K1025586 | 14/16 |
|-------|--------|--------|----------|-------|

11. PERFORMANCE DATA

1) MAIN RELIEF PRESSURE

WORKING, TRAVEL : **350 [⁺¹⁰/₀] kg/cm²**

12. NOISE LEVEL

L_{WA} GUARANTEED SOUND POWER LEVEL : 103 dB(A) (2000/14/EC)
 MESSURED SOUND POWER LEVEL : 102 dB(A) (2000/14/EC)
L_{pA} OPERATOR NOISE : 73 dB(A) (ISO 6396)

▶ ABOVE NOISE LEVEL DATA ARE TEST RESULTS OF PROTOTYPE MACHINE.

13. SUB GROUP WEIGHT

| ITEM | | UNIT | FIGURE | REMARKS |
|------------------------------|----------------|--|--------|---------------------|
| UPPER STRUCTURE W/O FRONT | | kg | 9,853 | WITH COUNTER WEIGHT |
| COUNTER WEIGHT | | kg | 4,100 | |
| LOWER STRUCTURE ASS'Y | | kg | 7,635 | LC TRACK |
| FRONT ASS'Y | | kg | 4,012 | |
| BOOM (5.7m) | | kg | 1,463 | WITH BUSH |
| ARM (2.9m) | | kg | 656 | WITH BUSH |
| BUCKET (0.92m ³) | | kg | 700 | |
| BOOM CYL. (ea) | | kg | 178 | |
| ARM CYL. | | kg | 266 | |
| BUCKET CYL. | | kg | 152 | |
| DOZER | | kg | - | |
| DOZER CYL. (ea) | | kg | - | |
| OPTION | Arm | 2.4m | kg | 574 |
| | BUCKET | 0.51m ³ (0.47m ³) | kg | 529 |
| | | 0.81m ³ (0.72m ³) | kg | 654 |
| | COUNTER WEIGHT | | kg | 3,800 |

| | | | | |
|-------|--------|--------|----------|-------|
| MODEL | DX200A | DWG No | K1025586 | 15/16 |
|-------|--------|--------|----------|-------|

14. USER SERVICE DATA

| COMPARTMENT/ GREASE JOINT | TYPE OF FLUID OR LUBRICANT | No, OF C/G | SERVICE INTERVAL (hr) | | | | | | COM- MENTS |
|-------------------------------|----------------------------------|---------------|-----------------------|----|-----|-----|------|------|---------------|
| | | | 10 | 50 | 250 | 500 | 1000 | 2000 | |
| BUCKET JOINT PIN | GREASE | 6 | ※△ | △ | | | | | |
| BOOM/ARM JOINT PIN | GREASE | 11 | ※△ | | △ | | | | |
| SWING BEARING | GREASE | 2 | | △ | | | | | |
| SWING GEAR | GREASE | 1 | | | | ○ | | | |
| HYD. ADJUST | GREASE | 2 | | | | △ | | | |
| SWING DEVICE | GREASE | 1 | | | | | △ | | |
| | GEAR OIL | 5ℓ | ■ | | | ※○ | ○ | | |
| TRAVEL DEVICE | GEAR OIL | 2x3.3ℓ | | | | ■※○ | ○ | | |
| ENGINE OIL | ENGINE OIL | 28ℓ | ■ | ※○ | | ○ | | | |
| OIL TANK | ISO VG #46 | 195ℓ | ■ | | | | | ○ | |
| FUEL TANK | DIESEL | 400ℓ | ■ | ▲ | | | | | |
| RADIATOR | WATER | 24ℓ | ■ | | | | | ○ | |
| HYD. RETURN FILTER | ELEMENT | 1 | | | ※○ | | ○ | | |
| PILOT FILTER | ELEMENT | 1 | | | ※○ | | ○ | | |
| HYD. OIL SUC. FILTER | STRAINER | 1 | | | | | | □ | |
| ENGINE OIL FILTER | CARTRIDGE | 1 | | ※○ | | ○ | | | |
| ADDITIONAL WATER SEPARATOR | DRAIN WATER | 1 | ▲ | | | | | | |
| WATER SEPARATOR | CARTRIDGE | 1 | ▲ | | | ○ | | | |
| FUEL FILTER | CARTRIDGE | 1 | | | | ○ | | | |
| AIR CLEANER | ELEMENT (INNER) | 1 | | | | | | ○ | |
| | ELEMENT (OUTER) | 1 | | | | □ | | ○ | |
| RADIATOR CORE | CORE | 1 | | | | □ | | | |
| OIL COOLER CORE | CORE | 1 | | | | □ | | | |
| INTER COOLER CORE | CORE | 1 | | | | □ | | | |
| AIR-CON COND. CORE | CORE | 1 | | | | □ | | | |
| AIR BREATHER FILTER | CARTRIDGE | 1 | | | | | ○ | | |

※ : FIRST TIME ONLY ▲ : DRAIN WATER ■ : CHECK
 △ : GREASING ○ : REPLACING □ : CLEANING

| | | | | |
|-------|--------|--------|----------|-------|
| MODEL | DX200A | DWG No | K1025586 | 16/16 |
|-------|--------|--------|----------|-------|