



Thermo Scientific PL6500
Lab Refrigerators and Freezers

reliable cold storage
for general-purpose applications



your samples

To the rest of the world these are samples but we know that they are your life's work. Your lab's mission. Your company's breakthrough. Sample integrity is our singular obsession. Our lab refrigerators and freezers are engineered to protect temperature-sensitive samples in general-purpose applications. Our equipment, your samples – working together.

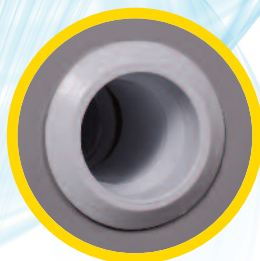
our obsession



Configurative and adjustable shelving in lab refrigerators; continuous shelving on double-door models (no obstructions)



Digital temperature controller with intuitive interface



Standard 25mm access port on all models



Door locks and additional space for padlocks on all models

+4°C Lab Refrigerators

- Temperature range of +1°C to +12°C (factory pre-set at +4°C)
- Digital temperature control
- Reliable temperature uniformity and air stability performance
- Interior fan for forced-air circulation (two fans on double-door model)
- Automatic defrost
- Lockable, dual-pane glass doors
- Keyed ON/OFF switch
- Interior lighting
- Standard 25mm access port
- Adjustable shelves



Shown left to right:
Lab refrigerators PLR221, PLR386, PLR1006; Lab freezer PLF276

Introducing

the Thermo Scientific PL6500 Series

Our new PL6500 lab refrigerators and freezers are suited for routine laboratory applications in non-regulated environments. All models feature advanced alarm options to meet the demanding requirements of the laboratory environment.

- Advanced air stability: $\pm 3^{\circ}\text{C}$
- Digital temperature controller with intuitive interface
- High and low visual temperature and audio alarms
- High-density, fluorine free insulation
- Heavy-duty construction
- Standard casters

-40°C Lab Freezers

- Settable temperature range of -20°C to -40°C (factory pre-set at -40°C)
- Reliable temperature uniformity and air stability performance (tightest uniformity at -40°C set point)
- Digital temperature control
- Manual defrost
- Lockable, high-quality steel door
- Standard 25mm access port



Digital temperature controller
with intuitive interface



Maximize Sample Protection

Our lab freezer contains six inner storage compartments. Store frequently accessed samples in the top flip-door compartments while long-term samples remain undisturbed in the bottom drawers.



Specifications and Ordering Information

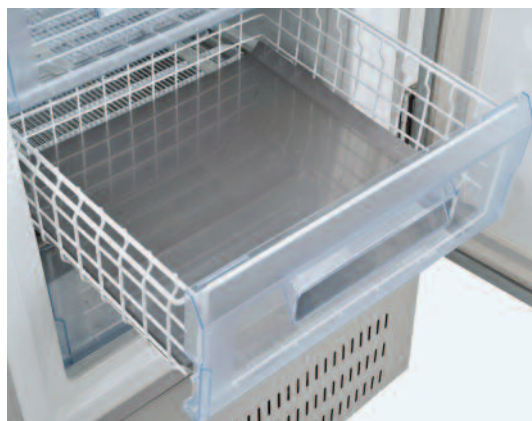


Description	Lab Refrigerator	Lab Refrigerator	Lab Refrigerator	Lab Freezer
Model No.	PLR221	PLR386	PLR1006	PLF276
Capacity (Liters)	221	386	1006	276
Electrical	220V, 50Hz	220V, 50Hz	220V, 50Hz	220V, 50Hz
Shelves/Drawers	3 shelves	5 shelves	12 shelves	4 drawers, 2 flip-top compartments
Exterior Dimensions H x D x W (mm)	1740 x 560 x 500	1960 x 660 x 700	2010 x 730 x 1200	1745 x 710 x 720
Interior Dimensions H x D x W (mm)	1010 x 400 x 430	1250 x 520 x 570	1620 x 580* x 1110	1200 x 460 x 500
Shipping Weight (kg)	64	110	238	123

* for top 1360mm; 260mm for bottom 260mm

Accessories

Description	Model No.
Stainless steel freezer basket inserts, 1 each (model PLF276 only)	322181H01
Free-standing chart recorder for temperature monitoring (all models)	316543H01



Choose our optional stainless steel freezer basket inserts for the storage of small items that might slip through the bottom of the standard PLF276 wire baskets (model no. 322181H01).

Plug Options

Plug	Model No.	Country
	AR230V16A	Argentina
	AU230V16A	Australia New Zealand
	UK230V16A	Singapore Sri Lanka Malaysia Hong Kong
	EU230V16A	Cambodia Chile Bolivia Indonesia Paraguay Thailand Vietnam
	IN230V16A	India Nepal Burma Bangladesh
	IT230V16A	Uruguay
	Standard	China

© 2012 Thermo Fisher Scientific Inc. All rights reserved. All trademarks are the property of Thermo Fisher Scientific Inc. and its subsidiaries. Specifications, terms and pricing are subject to change. Not all products are available in all countries. Please consult your local sales representative for details.

www.thermoscientific.com/cold

Asia: Australia +61 39757 4300, China +86 21 6865 4588 or +86 10 8419 3588, India toll free 1800 22 8374, India +91 22 6716 2200, New Zealand +64 9 980 6700, Other Asian countries +852 2885 4613 South America: +49 6184 90 6940

BPOCNI 6560 0211

Thermo
SCIENTIFIC

Part of Thermo Fisher Scientific