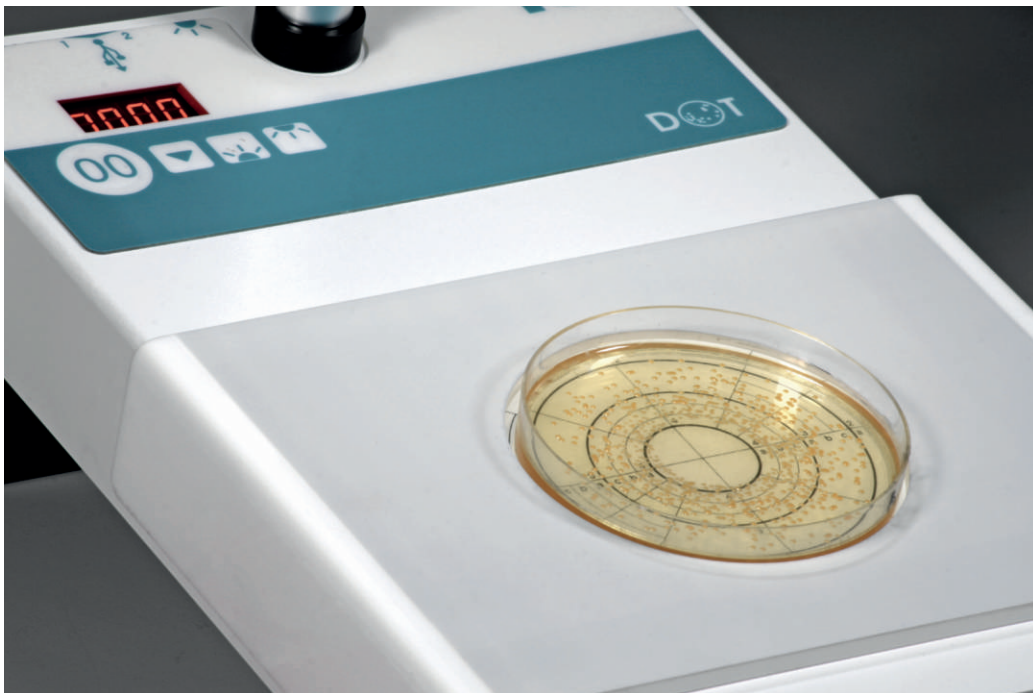




CAT. 90008700

DOT

All that counts
Colony Counter



www.iul-inst.com

Ordering Information

CAT. 90008700 DOT Colony Counter with 120mm magnifying glass with light.

CAT. 90008701 DOT Colony Counter with 100mm magnifying glass without light.

Accessories and Consumables

1. Clickable permanent marker
CAT. 900011459

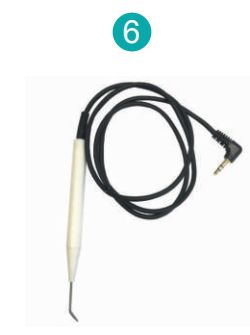
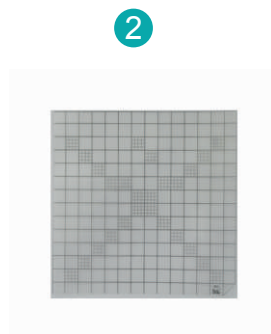
2. Mixer Grid 1/6 cm²
CAT. 9000613

3. 150mm centering device
CAT. 9000615

4. 60mm centering device
CAT. 9000606

5. Spiral Grid
CAT. 9000625

6. Stainless contact pointer
CAT. 900011460



Technical data

Counter: 4 digits, 9 mm LED-Display. Maximum count 9999

Inputs: Clickable permanent marker/ Stainless contact pointer (optional).

Outputs: USB Human Interface Device (HID) emulating standard PC keyboard output receivable by PC running keyboard compatible applications (Microsoft Windows®).

USB Virtual COM port (VCP) reserved for IUL, S.A. Technical Service purposes.

Upper light power (12V DC, 500mA)

Magnifying glasses: Biconvex, 100/120 mm Ø, 4 Diopters, DIN x 2

Lightning: Bottom light, 4 selectable intensities, On/Off switching powered from the instrument.

Upper light (depending of the glass magnifier ordered), On/Off switching powered from the instrument.

Specifications subjects to change without notice.

Mains: 100/240 V, 50/60 Hz

Power: 50W

Dimensions (WxDxH):

211x320x335 mm / 8.3x12.6x13.2 in (Cat. No. 90008700)

211x320x395 mm / 8.3x12.6x15.5 in (Cat. No. 90008701)

Weight:

3,2 Kg / 7,0 lb (Cat. No. 90008700)

2,7 Kg / 5,95 lb (Cat. No. 90008701)

For more information please visit us at:

www.iul-inst.com

IUL, S.A. Torrent de l'Estadella, 22 - 08030 Barcelona (Spain)
iul@iul-inst.com · T. +34 93 274 02 32 · F. +34 93 274 01 44

