

STALKER[®]

SPORTS RADAR



High Performance Sports Radar Gun

Stalker Pro II



■ Used by every Major League Baseball team.

■ The choice of top-level collegiate and semi-pro teams worldwide.

The choice of Professionals

Highly accurate and versatile with industry-leading range and performance

■ BASEBALL MODE

The bi-directional Pro II measures the peak (release) speed and plate (roll-down) speed of a baseball pitch, as well as the speed of a batted ball traveling in the opposite direction. All three speeds display at the same time.

■ VEHICLE MODE

Clock vehicles on land or water up to two miles away. The Stalker Pro II filters out other vehicles moving in the opposite direction of interest.

■ CARNIVAL MODE

The Pro II attaches to the side of a backdrop and measures the speed of midway game balls thrown from only a few feet away.

■ TENNIS MODE

Track balls on any side of the court, as the Pro II's wide beam width measures both the ball's peak (serve) speed as well as the decelerating live speed.

800-700-7937

MEGA-TECH

"Showcasing the finest in law enforcement products since 1986"

Mega-Tech.com

No other sport radar is as accurate, sensitive, or has as much range and versatility as the Stalker Pro II.

Pro II

Stalker Radar engineers have drawn on Stalker's Direction Sensing Technology and 15+ years of baseball scouting experience to develop the software and algorithms that yield greater range, sensitivity, and accuracy.

In a class by itself.

From the rugged cast-metal exterior (waterproof to 2 feet!) to the World's most sensitive transmitter/receiver, to the miniaturized and modernized electronics, to the direction-sensing software, and the baseball-specific algorithms, the Pro II is a new-generation sports radar in a class by itself.

Stalker's Pro II is the first sports radar capable of measuring the speed of supersonic objects.

Not only is the Stalker Pro II the first sports radar capable of simultaneously tracking objects moving both toward

and away from the radar, it is capable of measuring speeds in excess of the speed of sound (up to 800 miles per hour or 1,287 KM/H). And the Pro II's 10-millisecond acquisition time makes it ideal for virtually any type of sport, game, or activity that needs speed measurement.



One Sport Radar Does It All

Easy function selection on the Pro II automatically adjusts the internal settings for any type of target:

Baseball Mode: The bi-directional Pro II measures the peak (release) speed and plate (roll-down) speed of a baseball pitch, as well as the speed of a batted ball (traveling in the opposite direction of the pitched ball). All three speeds display at the same time.



Vehicle Mode: Clock vehicles on land or water up to two miles away. The Stalker Pro II also filters out other vehicles moving in the opposite direction of interest.

Carnival Mode: In carnival mode, the Pro II excels in a carnival or midway game setting. The Pro II attaches to the side of a backdrop and measures the speed of midway game balls thrown from only a few feet away. Plus the Pro II can compensate for angle errors in carnival or any other mode.

Tennis Mode: Track balls on either side of the tennis court, as the Pro II's wide beam width measures both the ball's peak (serve) speed as well as the decelerating live speed.

Stalker Pro II Sport Radar features and specifications:

- 1-800 mph speed range
- Waterproof to 2 feet of water
- Removable, rechargeable 7.2-volt, 2400 maHr lithium-ion battery handle
- Optional, rechargeable 7.2-volt, 3800 maHr lithium-ion battery handle
- Constant transmit time of 2 ½ hours per charge
- Measures MPH, KM/H, knots, M/S
- Resolution: Tenths and Ones – user selectable
- Ka-Band Doppler Radar
- 2 active speed windows; 5-digit status window; separate peak window
- Back lit LCD display and keypad
- Press trigger to transmit (or Press Transmit On / Press Transmit Off) – user selectable
- Includes 120 VAC wall adapter
- Optional 12 VDC Cigarette Plug Cable
- 12-degree radar beam
- 10 msec acquisition time
- 10 mw transmitter power
- RS-232 communication with RS-485 available on special order
- 1200 to 38.4K baud
- High Speed Cutoff 150 mph and 300 mph
- Recall Previous Display: 10 previous
- Stopwatch Function (requires optional stopwatch cable): basic, lap timer, split timer

800-700-7937

MEGA-TECH

"Showcasing the finest in law enforcement products since 1986"

7116 67 Street NW | Edmonton, AB T6B 3A6
Phone: 780-438-9330 | Fax: 780-435-7606
E-mail: sales@mega-tech.com

Mega-Tech.com



Solo 2

The Do-It-All Sports Radar

Lightweight and powerful sports radar designed to accurately measure speeds of balls, vehicles, and watercraft moving through the air, over land, or on water.



Whether your need is in a stadium, on a track, on dirt, snow or water, the Solo 2 will outperform competitive brands day after day.

■ BASEBALL MODE

The Solo 2 measures the peak (release) and current speed in 2 active windows.

■ VEHICLE MODE

Quickly and accurately measure the speed of vehicles on land or water.

■ CARNIVAL MODE

The Solo 2 attaches to the side of a backdrop and measure the speed of midway game balls thrown from only a few feet away.

■ TENNIS MODE

Track tennis ball speed on serves and returns from court-side game after game.

The Stalker Solo 2 brings full functionality and features to the speed measurement of virtually any application.

800-700-7937

MEGA-TECH

"Showcasing the finest in law enforcement products since 1986"

Mega-Tech.com

The Do-It-All Sport Radar from the World Leader in Sports Speed Measurement



The engineers at Stalker Radar, The World Leader in Speed Measurement, have designed the powerful Solo 2 sport radar from the ground up.

Up-To-Date Radar Design

The Solo 2 features newly designed software and algorithms created specifically for sports speed applications,

including baseball, automobiles, tennis, and carnival games.

Modern circuitry, components, and advanced manufacturing techniques add up to a smaller, lighter gun with no compromises in functionality.

Full Functionality in each mode:

BASEBALL MODE: The Solo 2 measures the peak (release) and current speed in 2 active windows.

VEHICLE MODE: Quickly and accurately measure the speed of vehicles on land or water.

CARNIVAL MODE: The Solo 2 attaches to the side of a backdrop and measure the speed of midway game balls thrown from only a few feet away.

TENNIS MODE: Track tennis ball speed on serves and returns from court-side game after game.



Rear Display



Data port

Stalker LED Speed Signs

Add Stalker's next-generation LED Speed Sign to your Solo 2. Stalker's new Speed Signs use high-intensity LEDs with no moving parts to break or wear out and are thinner and lighter than their old-generation counterparts.

- Bright, easy-to-read 8" LED digits
- Available in 2 1/2- and 3 1/2-digit configurations
- Lightweight and durable
- Stable swingout feet
- Folds flat for easy storage
- Hangs with integrated top corner hooks



Solo 2

Stalker Solo 2 features:

- Transmitter Power: 5mw (nominal).
- Package Includes: K-Band Radar Gun; 6 NiMH batteries; wall charger; manual; and hard case.
- 1 - Year Warranty.
- 2 Active Speed Windows – Both Peak Speed and Plate Speed.
- Maximum Range: 3/4 mile for average auto.
- Transmit Time: 4 1/2 hours.
- Speed Range: 5 – 600 mph.
- Uses common AA batteries - rechargeable NiMH with low battery indication.
- 10-millisecond speed acquisition time.
- Stopwatch function – Simultaneously measures pitches and times runners – optional stopwatch cable required.
- Standard Data Port. RS-232/RS-485, 1200 baud to 38.4 Kbaud – communicates with any serial device.
- Two transmit modes – Pull-to-transmit; pull-on, pull-off.
- Recall Previous – Recalls previous 5 readings.
- Modes: Baseball; car; tennis; carnival.
- Units of Measure: MPH; KM/H; knots; and meters/second.
- Speed resolution: Tenths, Ones.
- Beamwidth: 14°.
- Optional Accessories: 12VDC cigarette lighter receptacle adaptor; stopwatch cable; and Speed Sign cable.

800-700-7937

MEGA-TECH

"Showcasing the finest in law enforcement products since 1986"

7116 67 Street NW | Edmonton, AB T6B 3A6
Phone: 780-438-9330 | Fax: 780-435-7606
E-mail: sales@mega-tech.com

Mega-Tech.com

Baseball Radar Gun Designed for Stadium Use

Sport 2



The next-generation Stalker Sport 2 is the powerful, and easy to use baseball solution.

Quickly and easily measure pitching and running speeds with (2) active speed windows.

The Baseball Solution

- Designed specifically to measure pitching speeds and time base runners.
- Improved (higher) release speed measurement.
- Simultaneously displays release and plate speeds.

Nearly every Major League Baseball team's scouting organization uses Stalker Sport radars. Stalker radar are the most rugged, reliable, and accurate speed radars in the field.

800-700-7937

MEGA-TECH

"Showcasing the finest in law enforcement products since 1986"

Mega-Tech.com

Stalker's Sport 2 - the lightweight, accurate and powerful baseball solution.

Following our success with previous Stalker Sport models, the Sport 2 includes updated and improved radar design, new modern components, and more accurate and sophisticated software algorithms.

- Displays speed in either units or tenths.
- Reduced size and weight improves comfort.
- Concurrent Radar and Stopwatch Operation.
- Uses common AA NiMh rechargeable batteries.
- Battery Handle Cap quickly Snaps ON/OFF.
- Rugged polymer case
- In-Gun-Battery wall charger is included.



Stalker Sport 2 features:

- 1 - Year Warranty.
- Simple, baseball-specific operation.
- 2 Active Speed Windows – Both Peak Speed and Plate Speed.
- 3-Hour Battery Life – Uses common AA NiMh rechargeable batteries with low battery indication.
- 10-millisecond speed acquisition time.
- Stopwatch function – Simultaneously measures pitches and times runners – optional stopwatch cable required.
- Standard Data Port. Either RS-232 or RS-485, 1200 baud to 38.4 Kbaud – communicates with any serial device.
- Two transmit modes – Pull-to-transmit; pull-on, pull-off.
- Multiple units of measure – MPH and KM/H.
- Recall Previous – Recalls previous 5 readings.
- Default settings are optimized for measuring pitch speeds - User presses the MENU key to customize the settings.
- Performance: For baseballs 300 feet of unobstructed view.

Accuracy Tested

Just how accurate is the new Sport 2, and how does it compare to the competition? Most radar guns advertise "accurate to within +/- 1 to 3 mph." Stalker radar guns are typically accurate to within +/- 3% of reading.

After extensive testing we discovered that the Stalker Sport 2, and a ballistic chronograph agreed closely on nearly all measured speeds, but a competitor's gun measured 1 to 3 mph higher on almost every pitch!



Data port

Stalker LED Speed Signs

Add Stalker's next-generation LED Speed Sign to your Sport 2. Stalker's new Speed Signs use high-intensity LEDs with no moving parts to break or wear out and are thinner and lighter than their old-generation counterparts.

- Bright, easy-to-read 8" LED digits
- Available in 2 1/2- and 3 1/2-digit configurations
- Lightweight and durable
- Stable swingout feet
- Folds flat for easy storage
- Hangs with integrated top corner hooks



800-700-7937

MEGA-TECH

"Showcasing the finest in law enforcement products since 1986"

7116 67 Street NW | Edmonton, AB T6B 3A6
 Phone: 780-438-9330 | Fax: 780-435-7606
 E-mail: sales@mega-tech.com

Mega-Tech.com

Next-generation radar and powerful software

ATS II

The Stalker Acceleration Testing System

- New, next-generation ATS II hand-held radar
- Updated, more powerful ATS II software
- Speed and acceleration data stored in gun memory
- The choice of major magazines and manufacturers



"(STATS) proved to be within about 1/100th of a second of the Englishtown drag strip timing system on all 15 vehicles we ran...The Stalker is nothing short of amazing!"

Mike Allen
Popular Mechanics

"It's almost like having a dynamometer right at your fingertips...eliminates the guess work when you make performance changes... one of the coolest tools on earth!"

Tom Kerker
Splash Magazine

Introducing the Stalker ATS II

The **ST**alker **A**cceleration **T**esting **S**ystem (**STATS**) is the combination of the incredible Stalker ATS II professional hand-held radar and the new, more powerful Stalker ATS II software.

The Stalker ATS II radar gun is a portable and accurate instrument for recording acceleration and deceleration of vehicles and other moving objects. Like its predecessor - the Stalker ATS - the ATS II is a speed sensing radar. But rather than sending data just to a connected computer, the ATS II also stores the data in memory located inside the gun. Thus - unlike the ATS - the ATS II doesn't require connection to a computer to collect its speed and acceleration data.

The Stalker ATS II provides a detailed picture of the dynamics of acceleration. It is the ultimate tool for racers and manufacturers to test and tune products for maximum performance.

800-700-7937

MEGATECH

"Showcasing the finest in law enforcement products since 1986"

Mega-Tech.com

The Industry Standard

The original STATS is used by nearly every major magazine and vehicle manufacturer for acceleration and braking tests. The performance measurements you see published are most likely performed with STATS. Now you can own the next generation STATS II.

Next-Generation Radar

Based on the Stalker Pro II next-generation sports radar, the ATS II is smaller and lighter than the original ATS radar. With a 1 - 800 mph speed range, it's capable of clocking balls at up to 500 feet and automobiles up to two miles.



Speed and acceleration events are measured at precise intervals and stored in the gun as separate "trials." The number of trials that can be stored is dependent on each trial's length. A total of 60 minutes of readings can be stored in the ATS II.

Data Transferred to Computer

To process and analyze the speed and acceleration data, the ATS II is first connected to a computer running the Stalker STATS II software. The data is transferred and saved as a file on the computer's hard drive. Since speed, time, distance, and acceleration (or deceleration) are mathematically related, having any two of these measurements mean the other components can be derived with absolute accuracy.

Use the ATS II Anywhere

The ATS II gun is waterproof in up to two feet of water so you can use it anywhere - on the lake or ocean, on snow, on straight roads, in your car, or in your backyard. Just position the ATS II behind (or ahead of) the test vehicle. You can even place the radar inside the test vehicle and take speed readings from the terrain. There is nothing to attach to the vehicle to change its aerodynamics or weight.

Simply connect the ATS II to your computer running STATS II and download the trial data. Software analysis is simple and automated.

SPECIFICATIONS:

Accuracy:	± 0.1 MPH
Speed Range:	1 - 800 MPH In whole digit resolution to the nearest integer; In tenths resolution to the nearest tenth.
Target Acquisition Time:	0.01 seconds
Microwave System:	Ka Band, 15 mw nominal
Weight:	2.15 pounds
Units of Measure:	MPH, km/h, knots, m/s
Warranty:	1 year Parts and Labor 90 days on batteries
Range:	
Baseball	500 feet
Automobiles	1¾ miles

ATS II

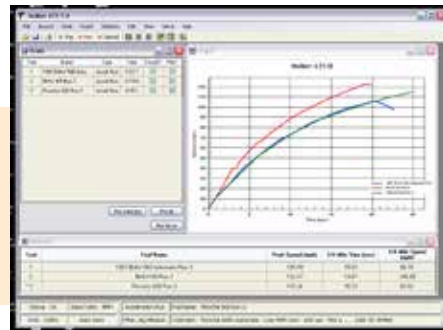
The Stalker Acceleration Testing System



Downloading data is as simple as pressing the F2 key. The run can then be graphed in any combination of speed, time, distance, and acceleration.



Statistics can be selected from a list, or customer measurement points can be created using simple start and end settings. STATS II provides performance information anywhere on a run, not just ending times.



A new file can be created by averaging several runs together. This is great for reducing the effects of variables like the wind.



Built-in context sensitive Help is always available at the push of a button. A complete version of the manual is stored in the help files.

800-700-7937

MEGA TECH

"Showcasing the finest in law enforcement products since 1986"

7116 67 Street NW | Edmonton, AB T6B 3A6
Phone: 780-438-9330 | Fax: 780-435-7606
E-mail: sales@mega-tech.com

Mega-Tech.com

Next Generation High Intensity LED Speed Signs

LED Speed Signs



2 1/2-digit

3 1/2-digit

Stalker Radar's 8" digit height, 2 1/2- and 3 1/2- digit LED Speed Signs share the next-generation technology of the Stalker's new line of sports radar.

Stalker's next generation Speed Signs use high-intensity LEDs with no moving parts to break or wear out and are thinner and lighter than their old-generation counterparts. These new Speed Signs do things that the old flip-signs can't do, such as connecting up to three Speed Signs to a Pro II radar to simultaneously show Pitch, Plate, and Hit speeds.

- Lightweight and durable
- Stable swingout feet
- Folds flat for easy storage
- Hangs with integrated top corner hooks
- Bright, easy-to-read LED digits

Stalker LED Speed Signs interface with all Stalker Sport Radar and Jugs Radar Guns through the use of connectors and dedicated cables.

- Stalker ATS II
- Stalker Pro II
- Stalker Sport 2
- Stalker Solo 2
- Stalker Sport
- Stalker Pro
- Jugs Pro-Sports
- Jugs Si Arcade

Available in 2 1/2- and 3 1/2-digit models. Its specifications are:

Model:	2 1/2-Digit Speed Sign	3 1/2-Digit Speed Sign
Dimensions:	15.5" (39.4cm) wide 9.5" (24.1cm) high 1.375" (3.5cm) deep	21.5" (54.6cm) wide 9.5" (24.1 cm) high 1.375" (3.5cm) deep
Weight:	6.05 lbs. (2.74kg)	8.05 lbs. (3.65kg)
Digit height:	8.0" (20.3cm)	8.0" (20.3cm)
Input Voltage:	8 to 24 volts (.12 A @12 VDC)	8 to 24 volts (.15 A @12 VDC)

Stalker LED Speed Signs are manufactured in the United States and backed by a full 1-year warranty.

The LED Speed Sign is weather resistant, but should be kept out of heavy rain. The external power supply is not waterproof and should be kept dry at all times.

800-700-7937

MEGA TECH
 "Showcasing the finest in law enforcement products since 1986"

Mega-Tech.com

LED Speed Signs

LED Speed Sign Setup

The Stalker LED Speed Sign features rotating feet that fold parallel to the sign's case for easy storage.

To position the Speed Sign on a flat surface, rotate the feet 90 degrees so that they are perpendicular to the sign's face.

Alternatively, hang the sign using the integral top-corner hooks.

Connecting a Radar and a Sign

In order for the Speed Sign to properly recognize the particular radar gun model and its data, the unit(s) should be connected in the following manner:

- 1) connect data cable to radar and sign
- 2) apply power to sign by connecting the external power supply*
- 3) power up radar

*** EXTERNAL POWER SUPPLY IS NOT WATERPROOF. KEEP DRY AT ALL TIMES.**

Speed Sign Controls

The Stalker LED Speed Sign's controls are located on the lower left side of the unit. A momentary push-button switch initiates LED testing sequences in the following modes:

- Push 1** – Table Demonstration Mode: Slowcount, full digit flash, slow count, fast count, loop...
- Push 2** – Fast count
- Push 3** – All LEDs on
- Push 4** – Show software version
- Push 5** – Enter normal mode

Configuration

To configure multiple LED Speed Signs using the Stalker Pro II radar, use Speed Sign multiple sign cabling hub, 200-0815-00. Set DIP switches 6, 7, and 8 to their appropriate positions before connecting the radar and signs.



An external switching power supply converts 110 VAC or 220 VAC into 12 VDC and connects to the sign through a 5.5mm x 2.5mm center-positive jack.

A male DB-9 connector, receives data from the radar unit.

The Stalker LED Speed Sign interfaces with sport radar guns through the use of connectors and dedicated cables.

Model	Cable (connector)
Stalker ATS II	155-2284-00
Stalker Pro II	155-2284-00
Stalker Sport 2	155-2287-25
Stalker Solo 2	155-2287-25
Stalker Pro**	155-2271-00 For radars without an RS-232 port require a Handle with Data Connector 200-0163-02 155-2287-25 For radars with RS-232 port.*
Stalker Sport	155-2271-00 For radars without and RS-232 port require a Handle with Data Connector 200-0163-02 155-2287-25 For radars with RS-232 port.*
Jugs Pro-Sports	155-2287-25
Jugs Si Arcade	155-2312-20

* Requires a Battery Handle ((200-0480-00) or Corded Handle (200-0163-00)

**Stalker Pro requires software Version 7.2 for RS-232 or Version 4.2 for TTL version or higher. To check your version, press and hold the "Self Test" button and then power on the unit.

For detailed gun and Speed Sign configuration, see our Radar Gun/LED Speed Sign Compatibility Chart

Radar/LED Speed Sign Compatibility



RADAR	2 ½-DIGIT and 3 ½-DIGIT x 8-INCH LED SPEED SIGNS	CABLE (See note 1)
STALKER PRO (See note 3)	If using the corded interface handle on the radar (with no connector on the right side): Sign: 1 2 3 4 5 6 7 8 ↑ ↓ ↓ ↓ ↓ ↓ ↓ ↓	155-2271-00 Radars without an RS-232 port require a Handle with Data Connector, 200-0163-02.
	If using the RS232 format assembly on the radar (with connector on the right side): Sign: 1 2 3 4 5 6 7 8 ↓ ↓ ↓ ↓ ↓ ↓ ↓ ↓ Radar: Format A, 9600 baud	155-2287-25 (See note 2)
STALKER SPORT	If using the corded interface handle on the radar (with no connector on the right side): Sign: 1 2 3 4 5 6 7 8 ↑ ↓ ↓ ↓ ↓ ↓ ↓ ↓	155-2271-00 Radars without an RS-232 port require a Handle with Data Connector, 200-0163-02.
	If using the RS232 version of the radar (with connector on the right side): Sign: 1 2 3 4 5 6 7 8 ↓ ↓ ↓ ↓ ↓ ↓ ↓ ↓ Radar: Format A, 1200 baud	155-2287-25 (See note 2)
STALKER SPORT 2	Sign: All switches set to OFF ↓. Radar: 1200 or 9600 Baud, Format A or AP, whole and tenths units	155-2287-25
STALKER SOLO 2	Sign: All switches set to OFF ↓ in A format. Switch 6 ↑ for bE format. Radar: 1200 or 9600 Baud, Format A or bE, whole and tenths units	155-2287-25
JUGS PRO-SPORTS	Sign: All switches set to OFF ↓. Radar: 1200 or 9600 Baud, Format A or bE, whole and tenths units	155-2287-25
STALKER PRO II	Sign: All switches set to OFF ↓ in A format. bE Format: 1 2 3 4 5 6 7 8 ↓ ↓ ↓ ↓ ↓ * * * For Plate Speed ↑ ↓ ↓ For Release Speed ↓ ↑ ↓ For Hit Speed ↑ ↑ ↓ Radar: 1200 or 9600 Baud, Format A or bE, whole and tenths units	155-2284-00

* RS-232 models only

- Notes:
1. The standard cable length for all signs is 20 feet unless otherwise noted. Longer cable lengths are available.
 2. Requires a Battery Handle (200-0480-00) or Corded Handle (200-0163-00).
 3. Stalker Pro requires software Version 7.2 for RS-232 or Version 4.2 for TTL version or higher. To check your version, press and hold the "Self Test" button and then power on the unit.

(continued)

Radar/LED Speed Sign Compatibility

(continued from page 1)



RADAR	2 ½-DIGIT and 3 ½-DIGIT x 8-INCH LED SPEED SIGNS	CABLE (See note 1)
STALKER ATS II	<p>Sign: All switches set to OFF ↓ in A format.</p> <p>bE Format: 1 2 3 4 5 6 7 8 ↓ ↓ ↓ ↓ ↓ * * *</p> <p>For Plate Speed ↑ ↓ ↓ For Release Speed ↓ ↑ ↓ For Hit Speed ↑ ↑ ↓</p> <p>Radar: 1200 or 9600 Baud, Format A or bE, whole and tenths units</p> <p style="text-align: right;">} In Baseball Mode</p>	155-2284-00
JUGS Si Arcade	<p>Sign: All switches set to OFF ↓.</p> <p>Radar: 1200 or 9600 Baud, defaults to 1200.</p>	155-2312-20
STALKER Speed Sensor*	<p>Sign: All switches set to OFF ↓ in A and AF format.</p> <p>Sensor: 1200 or 9600 Baud, Format A or AF, whole and tenths units</p>	155-2315-30
STALKER Pro II Speed Sensor*	<p>Sign: All switches set to OFF ↓ in A format.</p> <p>bE Format: 1 2 3 4 5 6 7 8 ↓ ↓ ↓ ↓ ↓ * * *</p> <p>For Plate Speed ↑ ↓ ↓ For Release Speed ↓ ↑ ↓ For Hit Speed ↑ ↑ ↓</p> <p>Sensor: 1200 or 9600 Baud, Format A or bE, whole and tenths units</p>	155-2315-30

* RS-232 models only

Note: 1. The standard cable length for all signs is 20 feet unless otherwise noted. Longer cable lengths are available

800-700-7937

MEGA TECH

"Showcasing the finest in law enforcement products since 1986"

7116 67 Street NW | Edmonton, AB T6B 3A6
Phone: 780-438-9330 | Fax: 780-435-7606
E-mail: sales@mega-tech.com

Mega-Tech.com



Distributed by:

MEGA  **TECH**

"Showcasing the finest in law enforcement products since 1986"

Mega Technical Holdings Ltd.
7116 67 Street NW
Edmonton, AB T6B 3A6

1-800-700-7937
Ph: (780) 438-9330
Fax: (780) 435-7606

