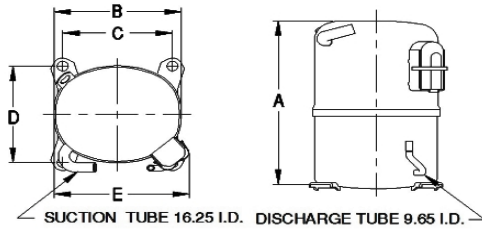


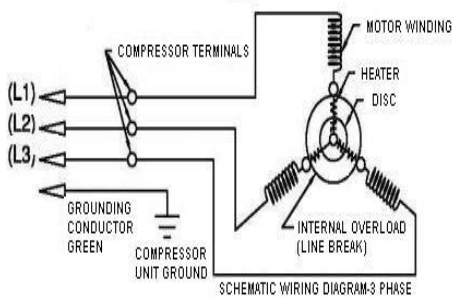


PRINCIPAL DIMENSIONS - mm



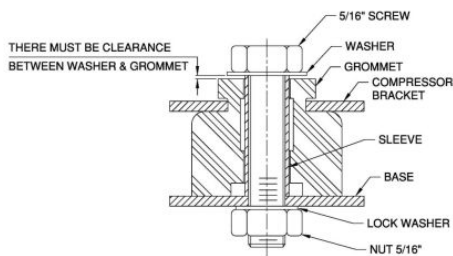
| | | | | |
|--------|--------|--------|--------|--------|
| A: 324 | B: 223 | C: 191 | D: 191 | E: 239 |
|--------|--------|--------|--------|--------|

SCHEMATIC WIRING DIAGRAM 3 PHASE



SCHEMATIC WIRING DIAGRAM -

MOUNTING KIT



Electrical : 380-420 V/50 Hz., 460 V/60 Hz. 3 Phase

Nominal Performance

| | |
|------------------------|---------------------------|
| Capacity | 2,697 / 2,899 Watts |
| | 9,202 / 9,891 BTU/Hr |
| | 2,319 / 2,493 Kcal/Hr |
| Power Input | 1,693 / 1,867 Watts |
| Locked Rotor Amps | 24.00 / 27.00 Amps |
| Max Continuous Current | - / - Amps |
| Rated Load Amps | 3.20 / 3.10 Amps |
| COP | 1.59 / 1.55 Watts / Watts |
| EER | 5.44 / 5.30 BTU/W-Hr |

Testing Conditions

| | | |
|-------------------------|---------------|-------------|
| Condensing Temperature | 54.40 °C | 129.9 °F |
| Evaporating Temperature | -23.30 / - °C | -9.9 / - °F |
| Liquid Temperature | 32.20 °C | 90.0 °F |
| Return Gas Temperature | 32.20 °C | 90.0 °F |
| Ambient Temperature | 32.20 °C | 90.0 °F |

Application

| | | |
|--------------------------|----------------|---|
| Evaporating Temp. Range | LBP | @ -40.00 °C to -12.20 °C (-40.0° F to 10.0° F) |
| | Heat Pump | - °C to - °C (-° F to -° F) |
| Refrigerant | R404A | |
| Refrigerant Flow Control | Capillary Tube | |
| Compressor Cooling | Fan | |

Compressor and Motor data

| | |
|---------------------------------|------------------------------------|
| Compressor Type | Reciprocating |
| Displacement | 59.00 cc. |
| Oil Type | Polyolester Oil |
| Oil Charge | 964 cc. |
| Motor Type | 3 PHASE ; 2 Pole 2,850 / 3,450 r/m |
| Voltage Range | 342-456/394-552 Volts 50/60 Hz. |
| Winding Resistance at 25 °C | |
| L1-L2 | 5.20 Ohms |
| L1-L3 | 5.10 Ohms |
| L2-L3 | 5.20 Ohms |
| Weight with Oil | 28.91 Kg. |
| Weight with Oil and Accessories | 29.41 Kg. |

Electrical Components

| | |
|------------------------------|--------------------------------|
| Motor Protector | |
| Type | Internal Overload |
| Model Number | 4042KGE658-1 |
| Open / Close | 120-130 / 70-52 °C |
| 1st Cycle trip at 25 °C | 27.00 Amps(main) - Amps(start) |
| Motor Starter | |
| Type | - |
| Model Number | - |
| Pick Up (max.) | - Volts |
| Drop Out (min.) | - Volts |
| Terminal Cover | KGM 901-2 |
| Start Capacitor | - µF - VAC. |
| Disch Resistor for Start Cap | - |
| Run Capacitor | - µF - VAC. |

Mounting Kit

| | |
|----------------|--------------|
| Rubber Grommet | 4007KGM905-2 |
| Sleeve Grommet | 4023KGM903-2 |
| Washer | - |

Since we are constantly improving our product , the specification are subject to change without notice.

| | |
|-----------|-----------|
| REV. DATE | C / N No. |
| 20-02-18 | 0048/18 |

Certificate Marks

