

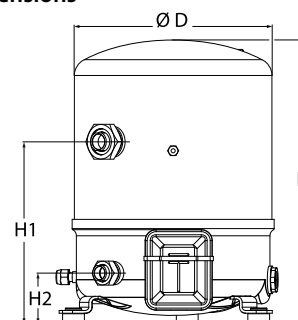
Datasheets

# Danfoss Reciprocating compressors **MT / MTZ / NTZ**

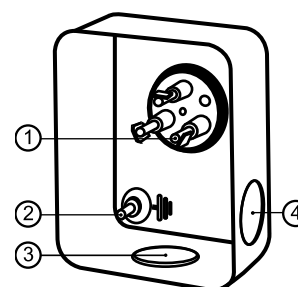


**General Characteristics**

Model number (on compressor nameplate)		<b>MTZ64HM4CVE</b>
Code number for Singlepack*		MTZ64-4VI
Code number for Industrial pack**		MTZ64-4VM
Drawing number		8502012g
Suction and discharge connections		Rotolock
Suction connection		1-3/4" Rotolock
Discharge connection		1-1/4" Rotolock
Suction connection with supplied sleeve		7/8" ODF
Discharge connection with supplied sleeve		3/4" ODF
Oil sight glass		Threaded
Oil equalisation connection		3/8" flare SAE
Oil drain connection		None
LP gauge port		Schrader
IPR valve		30 bar / 8 bar
Cylinders		2
Swept volume		107.71 cm <sup>3</sup> /rev
Displacement @ Nominal speed		18.7 m <sup>3</sup> /h @ 2900 rpm - 22.6 m <sup>3</sup> /h @ 3500 rpm
Net weight		39 kg
Oil charge		1.8 litre, POE - 175PZ
Maximum system test pressure Low Side / High side		25 bar(g) / 30 bar(g)
Maximum differential test pressure		30 bar
Maximum number of starts per hour		12
Refrigerant charge limit		5 kg
Approved refrigerants		R404A, R134a, R407C, R407A/F, R448A, R449A, R452A

**Dimensions**


D=288 mm  
H=413 mm  
H1=265 mm  
H2=74 mm  
H3=- mm

**Terminal box**


IP55 (with cable gland)

- 1: Spade connectors 1/4"
- 2: Earth M4-12
- 3: Knock-out Ø 21 mm (0.83")
- 4: Hole Ø 21 mm (0.83")

**Electrical Characteristics**

Nominal voltage	380-400V/3/50Hz - 460V/3/60Hz
Voltage range	340-440 V @ 50Hz - 414-506 V @ 60Hz
Winding resistance (between phases) +/- 7% at 25°C	2.39 Ω
Maximum Continuous Current (MCC)	14 A
Locked Rotor Amps (LRA)	64 A
Motor protection	Internal overload protector

**Recommended Installation torques**

Oil sight glass	50 Nm
Power connections / Earth connection	2 Nm / 2 Nm
Mounting bolts	15 Nm

**Parts shipped with compressor**

Mounting kit with grommets, bolts, nuts, sleeves and washers
Suction & Discharge solder sleeves, rotolock nuts and gaskets (shipped with rotolock version only)
Initial oil charge
Installation instructions

**Approvals** : CE certified, UL certified (file SA6873), -

\*Singlepack: Compressor in cardboard box

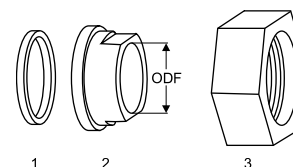
\*\*Industrial pack: 6 Unboxed compressors on pallet (order per multiples of 6)

**Rotolock accessories, suction side**

**Code no.**

Solder sleeve, P07 (1-3/4" Rotolock, 7/8" ODF)	8153013
Angle adapter, C07 (1-3/4" Rotolock, 7/8" ODF)	8168008
Rotolock valve, V07 (1-3/4" Rotolock, 7/8" ODF)	8168032
Gasket, 1-3/4"	8156132

**Gaskets, sleeves and nuts**



- 1: Gasket
- 2: Solder sleeve
- 3: Rotolock nut

**Rotolock accessories, discharge side**

**Code no.**

Solder sleeve, P04 (1-1/4" Rotolock, 3/4" ODF)	8153008
Angle adapter, C04 (1-1/4" Rotolock, 3/4" ODF)	8168006
Rotolock valve, V04 (1-1/4" Rotolock, 3/4" ODF)	8168029
Gasket, 1-1/4"	8156131

**Rotolock accessories, sets**

**Code no.**

Angle adapter set, C07 (1-3/4"~7/8"), C04 (1-1/4"~3/4")	7703013
Valve set, V07 (1-3/4"~7/8"), V04 (1-1/4"~3/4")	7703006
Gasket set, 1", 1-1/4", 1-3/4", OSG gaskets black & white	8156009

**Oil / lubricants**

**Code no.**

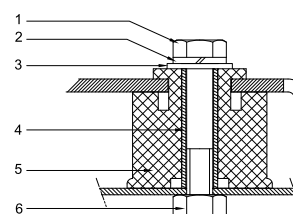
POE lubricant, 175PZ, 1 litre can	120Z0638
POE lubricant, 175PZ, 2.5 litre can	120Z0639

**Crankcase heaters**

**Code no.**

PTC heater 27W, CE mark, UL	120Z0459
Belt type crankcase heater, 65 W, 230 V, CE mark, UL	7773107
Belt type crankcase heater, 65 W, 400 V, CE mark, UL	7773117
Belt type crankcase heater, 65 W, 460 V, CE mark, UL	120Z0466

**Mounting kit**



- 1: Bolt (3x)
- 2: Lock washer (3x)
- 3: Flat washer (3x)
- 4: Sleeve (3x)
- 5: Grommet (3x)
- 6: Nut (3x)

**Miscellaneous accessories**

**Code no.**

Electronic soft start kit, MCI 15 C	7705006
Acoustic hood for 2 cylinder compressor	120Z0472
Oil equalisation nut	8153127

**Spare parts**

**Code no.**

Mounting kit for 1 and 2 cylinder compressor, including 3 grommets, 3 bolts	8156001
Oil sight glass with gaskets (black & white)	8156019
Gasket for oil sight glass (black chloroprene)	8156145
Service kit for terminal box 80 x 96 mm, including 1 cover, 1 clamp	8156134

Danfoss can accept no responsibility for possible errors in catalogues, brochures and other printed material. Danfoss reserves the right to alter its products without notice. This also applies to products already on order provided that such alternations can be made without subsequential changes being necessary in specifications already agreed. All trademarks in this material are property of the respective companies. Danfoss, the Danfoss logotype and Maneurop are trademarks of Danfoss A/S. All rights reserved.

Performance data at 50 Hz, EN 12900 rating conditions

R407C

Cond. temp. in °C (tc)	Evaporating temperature in °C (to)							
	-15	-10	-5	0	5	10	15	

Cooling capacity in W

35	6 299	8 351	10 830	13 785	17 266	21 320	26 000	-	-
40	5 680	7 599	9 921	12 695	15 971	19 799	24 227	-	-
45	5 079	6 858	9 016	11 603	14 668	18 261	22 431	-	-
50	-	6 136	8 123	10 516	13 364	16 715	20 621	-	-
55	-	-	7 252	9 443	12 066	15 170	18 803	-	-
60	-	-	-	8 393	10 784	13 632	16 988	-	-
65	-	-	-	7 372	9 525	12 111	15 181	-	-

Power input in W

35	2 778	3 083	3 341	3 563	3 759	3 940	4 116	-	-
40	2 866	3 231	3 541	3 806	4 036	4 242	4 435	-	-
45	2 913	3 352	3 726	4 046	4 323	4 566	4 787	-	-
50	-	3 436	3 887	4 275	4 610	4 904	5 166	-	-
55	-	-	4 017	4 485	4 891	5 247	5 562	-	-
60	-	-	-	4 668	5 157	5 588	5 969	-	-
65	-	-	-	4 816	5 401	5 918	6 377	-	-

Current consumption in A

35	6.07	6.40	6.74	7.05	7.32	7.53	7.66	-	-
40	6.19	6.56	6.94	7.30	7.62	7.89	8.07	-	-
45	6.29	6.73	7.16	7.59	7.97	8.30	8.55	-	-
50	-	6.87	7.38	7.88	8.35	8.76	9.09	-	-
55	-	-	7.57	8.17	8.73	9.24	9.67	-	-
60	-	-	-	8.42	9.10	9.72	10.27	-	-
65	-	-	-	8.63	9.43	10.18	10.86	-	-

Mass flow in kg/h

35	137	178	227	285	351	428	515	-	-
40	130	170	219	275	341	416	502	-	-
45	122	162	209	265	329	404	489	-	-
50	-	154	200	254	317	390	474	-	-
55	-	-	190	243	304	376	458	-	-
60	-	-	-	231	291	361	442	-	-
65	-	-	-	219	277	346	424	-	-

Coefficient of performance (C.O.P.)

35	2.27	2.71	3.24	3.87	4.59	5.41	6.32	-	-
40	1.98	2.35	2.80	3.34	3.96	4.67	5.46	-	-
45	1.74	2.05	2.42	2.87	3.39	4.00	4.69	-	-
50	-	1.79	2.09	2.46	2.90	3.41	3.99	-	-
55	-	-	1.81	2.11	2.47	2.89	3.38	-	-
60	-	-	-	1.80	2.09	2.44	2.85	-	-
65	-	-	-	1.53	1.76	2.05	2.38	-	-

Nominal performance at to = 5 °C, tc = 50 °C

Cooling capacity	13 364	W
Power input	4 610	W
Current consumption	8.35	A
Mass flow	317	kg/h
C.O.P.	2.90	



Pressure switch settings

Maximum HP switch setting	29.4	bar(g)
Minimum LP switch setting	1.4	bar(g)
LP pump down setting	1.7	bar(g)

Sound power data

Sound power level	83	dB(A)
With acoustic hood	77	dB(A)

to: Evaporating temperature at dew point

tc: Condensing temperature at dew point

Rating conditions : Superheat = 10 K , Subcooling = 0 K

Tolerance according EN12900

**Performance data at 50 Hz, ARI rating conditions**
**R407C**

Cond. temp. in °C (tc)	Evaporating temperature in °C (to)							
	-15	-10	-5	0	5	10	15	

**Cooling capacity in W**

35	6 780	8 978	11 629	14 785	18 498	22 819	27 798	-	-
40	6 147	8 212	10 708	13 685	17 196	21 292	26 025	-	-
45	5 532	7 457	9 790	12 581	15 883	19 748	24 228	-	-
50	-	6 722	8 884	11 482	14 568	18 196	22 416	-	-
55	-	-	7 999	10 396	13 261	16 644	20 598	-	-
60	-	-	-	9 335	11 970	15 103	18 786	-	-
65	-	-	-	8 307	10 707	13 584	16 990	-	-

**Power input in W**

35	2 778	3 083	3 341	3 563	3 759	3 940	4 116	-	-
40	2 866	3 231	3 541	3 806	4 036	4 242	4 435	-	-
45	2 913	3 352	3 726	4 046	4 323	4 566	4 787	-	-
50	-	3 436	3 887	4 275	4 610	4 904	5 166	-	-
55	-	-	4 017	4 485	4 891	5 247	5 562	-	-
60	-	-	-	4 668	5 157	5 588	5 969	-	-
65	-	-	-	4 816	5 401	5 918	6 377	-	-

**Current consumption in A**

35	6.07	6.40	6.74	7.05	7.32	7.53	7.66	-	-
40	6.19	6.56	6.94	7.30	7.62	7.89	8.07	-	-
45	6.29	6.73	7.16	7.59	7.97	8.30	8.55	-	-
50	-	6.87	7.38	7.88	8.35	8.76	9.09	-	-
55	-	-	7.57	8.17	8.73	9.24	9.67	-	-
60	-	-	-	8.42	9.10	9.72	10.27	-	-
65	-	-	-	8.63	9.43	10.18	10.86	-	-

**Mass flow in kg/h**

35	136	177	226	283	349	425	512	-	-
40	129	169	217	274	339	414	499	-	-
45	122	161	208	263	327	401	486	-	-
50	-	153	199	252	315	388	471	-	-
55	-	-	189	241	303	374	455	-	-
60	-	-	-	230	289	359	439	-	-
65	-	-	-	218	276	344	422	-	-

**Coefficient of performance (C.O.P.)**

35	2.44	2.91	3.48	4.15	4.92	5.79	6.75	-	-
40	2.15	2.54	3.02	3.60	4.26	5.02	5.87	-	-
45	1.90	2.22	2.63	3.11	3.67	4.32	5.06	-	-
50	-	1.96	2.29	2.69	3.16	3.71	4.34	-	-
55	-	-	1.99	2.32	2.71	3.17	3.70	-	-
60	-	-	-	2.00	2.32	2.70	3.15	-	-
65	-	-	-	1.73	1.98	2.30	2.66	-	-

**Nominal performance at to = 7.2 °C, tc = 54.4 °C**

Cooling capacity	14 851	W
Power input	5 016	W
Current consumption	8.91	A
Mass flow	334	kg/h
C.O.P.	2.96	

**Pressure switch settings**

Maximum HP switch setting	29.4	bar(g)
Minimum LP switch setting	1.4	bar(g)
LP pump down setting	1.7	bar(g)

**Sound power data**

Sound power level	83	dB(A)
With acoustic hood	77	dB(A)

to: Evaporating temperature at dew point

tc: Condensing temperature at dew point

Rating conditions : Superheat = 11.1 K , Subcooling = 8.3 K

Tolerance according EN12900

**Performance data at 50 Hz, EN 12900 rating conditions**
**R134a**

Cond. temp. in °C (tc)	Evaporating temperature in °C (to)							
	-25	-20	-10	-5	0	5	10	15

**Cooling capacity in W**

35	1 831	2 680	5 138	6 841	8 923	11 432	14 413	17 915	21 985
40	1 566	2 362	4 658	6 252	8 207	10 569	13 386	16 704	20 572
45	1 314	2 058	4 192	5 678	7 505	9 721	12 373	15 508	19 174
50	1 077	1 768	3 741	5 118	6 818	8 888	11 376	14 328	17 792
55	-	-	3 306	4 574	6 147	8 072	10 395	13 165	16 427
60	-	-	-	4 047	5 493	7 272	9 431	12 018	15 079
65	-	-	-	-	4 855	6 489	8 485	10 889	13 749
75	-	-	-	-	-	-	6 647	8 687	11 145

**Power input in W**

35	1 283	1 575	2 067	2 267	2 434	2 568	2 667	2 730	2 757
40	1 241	1 564	2 121	2 353	2 553	2 719	2 852	2 949	3 011
45	1 182	1 539	2 166	2 433	2 669	2 872	3 041	3 176	3 274
50	1 101	1 496	2 199	2 505	2 780	3 023	3 232	3 406	3 546
55	-	-	2 218	2 566	2 883	3 169	3 421	3 638	3 821
60	-	-	-	2 613	2 975	3 306	3 604	3 869	4 098
65	-	-	-	-	3 053	3 433	3 780	4 094	4 373
75	-	-	-	-	-	-	4 095	4 518	4 907

**Current consumption in A**

35	5.40	5.44	5.66	5.81	5.97	6.14	6.30	6.44	6.55
40	5.31	5.39	5.68	5.86	6.05	6.23	6.40	6.55	6.66
45	5.18	5.33	5.71	5.93	6.15	6.36	6.56	6.72	6.85
50	5.01	5.22	5.73	6.00	6.27	6.53	6.76	6.95	7.10
55	-	-	5.72	6.06	6.39	6.70	6.99	7.23	7.42
60	-	-	-	6.10	6.50	6.88	7.23	7.53	7.77
65	-	-	-	-	6.59	7.05	7.47	7.84	8.15
75	-	-	-	-	-	-	7.90	8.45	8.93

**Mass flow in kg/h**

35	46	67	122	159	203	255	315	386	466
40	42	62	117	153	196	247	307	376	456
45	37	57	111	146	189	239	298	367	446
50	33	52	105	140	181	231	289	357	435
55	-	-	98	133	174	223	280	347	424
60	-	-	-	126	166	214	271	337	413
65	-	-	-	-	158	205	261	326	402
75	-	-	-	-	-	-	241	304	378

**Coefficient of performance (C.O.P.)**

35	1.43	1.70	2.49	3.02	3.67	4.45	5.40	6.56	7.97
40	1.26	1.51	2.20	2.66	3.21	3.89	4.69	5.66	6.83
45	1.11	1.34	1.94	2.33	2.81	3.38	4.07	4.88	5.86
50	0.98	1.18	1.70	2.04	2.45	2.94	3.52	4.21	5.02
55	-	-	1.49	1.78	2.13	2.55	3.04	3.62	4.30
60	-	-	-	1.55	1.85	2.20	2.62	3.11	3.68
65	-	-	-	-	1.59	1.89	2.24	2.66	3.14
75	-	-	-	-	-	-	1.62	1.92	2.27

**Nominal performance at to = 5 °C, tc = 50 °C**

Cooling capacity	8 888	W
Power input	3 023	W
Current consumption	6.53	A
Mass flow	231	kg/h
C.O.P.	2.94	

**Pressure switch settings**

Maximum HP switch setting	20.2	bar(g)
Minimum LP switch setting	0.1	bar(g)
LP pump down setting	0.4	bar(g)

**Sound power data**

Sound power level	0	dB(A)
With acoustic hood	0	dB(A)

to: Evaporating temperature at dew point

tc: Condensing temperature at dew point

Rating conditions : Superheat = 10 K , Subcooling = 0 K

Tolerance according EN12900

Danfoss can accept no responsibility for possible errors in catalogues, brochures and other printed material. Danfoss reserves the right to alter its products without notice. This also applies to products already on order provided that such alternations can be made without subsequential changes being necessary in specifications already agreed. All trademarks in this material are property of the respective companies. Danfoss, the Danfoss logotype and Maneurop are trademarks of Danfoss A/S. All rights reserved.

Performance data at 50 Hz, ARI rating conditions

R134a

Cond. temp. in °C (tc)	Evaporating temperature in °C (to)							
	-25	-20	-10	-5	0	5	10	15

Cooling capacity in W

35	1 990	2 908	5 556	7 385	9 618	12 303	15 490	19 227	23 564
40	1 712	2 577	5 063	6 783	8 889	11 428	14 451	18 007	22 143
45	1 447	2 260	4 584	6 196	8 174	10 568	13 427	16 801	20 739
50	-	1 956	4 119	5 622	7 473	9 722	12 418	15 612	19 351
55	-	-	3 669	5 064	6 788	8 892	11 426	14 439	17 981
60	-	-	-	4 521	6 119	8 079	10 451	13 286	16 631
65	-	-	-	-	-	7 284	9 496	12 152	15 303
75	-	-	-	-	-	-	7 648	9 956	12 726

Power input in W

35	1 283	1 575	2 067	2 267	2 434	2 568	2 667	2 730	2 757
40	1 241	1 564	2 121	2 353	2 553	2 719	2 852	2 949	3 011
45	1 182	1 539	2 166	2 433	2 669	2 872	3 041	3 176	3 274
50	-	1 496	2 199	2 505	2 780	3 023	3 232	3 406	3 546
55	-	-	2 218	2 566	2 883	3 169	3 421	3 638	3 821
60	-	-	-	2 613	2 975	3 306	3 604	3 869	4 098
65	-	-	-	-	-	3 433	3 780	4 094	4 373
75	-	-	-	-	-	-	4 095	4 518	4 907

Current consumption in A

35	5.40	5.44	5.66	5.81	5.97	6.14	6.30	6.44	6.55
40	5.31	5.39	5.68	5.86	6.05	6.23	6.40	6.55	6.66
45	5.18	5.33	5.71	5.93	6.15	6.36	6.56	6.72	6.85
50	-	5.22	5.73	6.00	6.27	6.53	6.76	6.95	7.10
55	-	-	5.72	6.06	6.39	6.70	6.99	7.23	7.42
60	-	-	-	6.10	6.50	6.88	7.23	7.53	7.77
65	-	-	-	-	-	7.05	7.47	7.84	8.15
75	-	-	-	-	-	-	7.90	8.45	8.93

Mass flow in kg/h

35	46	66	122	158	202	253	314	383	464
40	42	62	116	152	195	246	305	374	454
45	37	57	110	146	188	238	297	365	443
50	-	52	104	139	181	230	288	355	433
55	-	-	98	132	173	222	279	345	422
60	-	-	-	125	165	213	269	335	411
65	-	-	-	-	-	204	260	324	399
75	-	-	-	-	-	-	240	303	376

Coefficient of performance (C.O.P.)

35	1.55	1.85	2.69	3.26	3.95	4.79	5.81	7.04	8.55
40	1.38	1.65	2.39	2.88	3.48	4.20	5.07	6.11	7.36
45	1.22	1.47	2.12	2.55	3.06	3.68	4.41	5.29	6.33
50	-	1.31	1.87	2.24	2.69	3.22	3.84	4.58	5.46
55	-	-	1.65	1.97	2.35	2.81	3.34	3.97	4.71
60	-	-	-	1.73	2.06	2.44	2.90	3.43	4.06
65	-	-	-	-	-	2.12	2.51	2.97	3.50
75	-	-	-	-	-	-	1.87	2.20	2.59

Nominal performance at to = 7.2 °C, tc = 54.4 °C

Cooling capacity	10 058	W
Power input	3 264	W
Current consumption	6.81	A
Mass flow	247	kg/h
C.O.P.	3.08	

Pressure switch settings

Maximum HP switch setting	20.2	bar(g)
Minimum LP switch setting	0.1	bar(g)
LP pump down setting	0.4	bar(g)

Sound power data

Sound power level	0	dB(A)
With acoustic hood	0	dB(A)

to: Evaporating temperature at dew point

tc: Condensing temperature at dew point

Rating conditions : Superheat = 11.1 K , Subcooling = 8.3 K

Tolerance according EN12900

Danfoss can accept no responsibility for possible errors in catalogues, brochures and other printed material. Danfoss reserves the right to alter its products without notice. This also applies to products already on order provided that such alternations can be made without subsequential changes being necessary in specifications already agreed. All trademarks in this material are property of the respective companies. Danfoss, the Danfoss logotype and Maneurop are trademarks of Danfoss A/S. All rights reserved.

Performance data at 50 Hz, EN 12900 rating conditions

R404A

Cond. temp. in °C (tc)	Evaporating temperature in °C (to)							
	-30	-25	-20	-15	-10	-5	0	5

Cooling capacity in W

30	3 529	4 868	6 542	8 600	11 094	14 074	17 592	21 697	26 442
35	3 058	4 300	5 847	7 748	10 054	12 817	16 088	19 916	24 353
40	2 602	3 744	5 160	6 900	9 017	11 559	14 579	18 127	22 254
45	2 160	3 199	4 482	6 059	7 982	10 301	13 067	16 332	20 145
50	1 735	2 667	3 813	5 224	6 950	9 043	11 553	14 530	18 027
55	-	2 149	3 155	4 396	5 923	7 786	10 036	12 724	15 900
60	-	1 645	2 508	3 577	4 901	6 531	8 518	10 913	13 766

Power input in W

30	2 404	2 781	3 131	3 449	3 733	3 981	4 189	4 355	4 476
35	2 399	2 819	3 211	3 573	3 903	4 196	4 451	4 665	4 835
40	2 372	2 836	3 274	3 683	4 060	4 403	4 708	4 973	5 195
45	2 320	2 832	3 318	3 777	4 204	4 599	4 956	5 275	5 552
50	2 240	2 802	3 340	3 851	4 332	4 780	5 194	5 569	5 904
55	-	2 744	3 336	3 902	4 440	4 946	5 418	5 853	6 248
60	-	2 656	3 305	3 930	4 526	5 093	5 626	6 123	6 581

Current consumption in A

30	5.75	6.10	6.50	6.90	7.29	7.65	7.93	8.11	8.17
35	5.80	6.17	6.59	7.04	7.48	7.88	8.22	8.48	8.61
40	5.81	6.21	6.67	7.16	7.65	8.12	8.53	8.86	9.08
45	5.78	6.22	6.73	7.27	7.82	8.36	8.85	9.26	9.58
50	5.71	6.20	6.76	7.36	7.98	8.60	9.17	9.68	10.09
55	-	6.14	6.76	7.43	8.13	8.83	9.50	10.10	10.62
60	-	6.04	6.73	7.48	8.26	9.05	9.82	10.54	11.17

Mass flow in kg/h

30	111	150	196	251	316	392	479	580	695
35	103	142	188	242	306	380	467	566	679
40	96	134	179	232	295	368	453	551	663
45	87	124	169	221	283	355	438	535	645
50	78	115	158	210	270	341	423	518	626
55	-	104	147	197	257	326	407	500	607
60	-	93	135	184	242	310	390	481	586

Coefficient of performance (C.O.P.)

30	1.47	1.75	2.09	2.49	2.97	3.54	4.20	4.98	5.91
35	1.27	1.53	1.82	2.17	2.58	3.05	3.61	4.27	5.04
40	1.10	1.32	1.58	1.87	2.22	2.63	3.10	3.65	4.28
45	0.93	1.13	1.35	1.60	1.90	2.24	2.64	3.10	3.63
50	0.77	0.95	1.14	1.36	1.60	1.89	2.22	2.61	3.05
55	-	0.78	0.95	1.13	1.33	1.57	1.85	2.17	2.55
60	-	0.62	0.76	0.91	1.08	1.28	1.51	1.78	2.09

Nominal performance at to = -10 °C, tc = 45 °C

Cooling capacity	7 982	W
Power input	4 204	W
Current consumption	7.82	A
Mass flow	283	kg/h
C.O.P.	1.90	



Pressure switch settings

Maximum HP switch setting	27.7	bar(g)
Minimum LP switch setting	1	bar(g)
LP pump down setting	1.3	bar(g)

Sound power data

Sound power level	80	dB(A)
With acoustic hood	74	dB(A)

to: Evaporating temperature at dew point

tc: Condensing temperature at dew point

Rating conditions : Superheat = 10 K , Subcooling = 0 K

Tolerance according EN12900



**Performance data at 50 Hz, ARI rating conditions**
**R404A**

Cond. temp. in °C (tc)	Evaporating temperature in °C (to)							
	-30	-25	-20	-15	-10	-5	0	5

**Cooling capacity in W**

30	3 929	5 405	7 244	9 499	12 226	15 476	19 305	23 764	28 906
35	3 441	4 823	6 538	8 639	11 181	14 218	17 804	21 991	26 834
40	2 966	4 252	5 839	7 783	10 138	12 959	16 300	20 214	24 755
45	2 504	3 691	5 148	6 932	9 098	11 701	14 795	18 434	22 674
50	2 055	3 141	4 467	6 089	8 064	10 447	13 294	16 659	20 597
55	-	2 604	3 797	5 256	7 040	9 204	11 805	14 898	18 538
60	-	2 079	3 141	4 440	6 035	7 984	10 345	13 173	16 525

**Power input in W**

30	2 404	2 781	3 131	3 449	3 733	3 981	4 189	4 355	4 476
35	2 399	2 819	3 211	3 573	3 903	4 196	4 451	4 665	4 835
40	2 372	2 836	3 274	3 683	4 060	4 403	4 708	4 973	5 195
45	2 320	2 832	3 318	3 777	4 204	4 599	4 956	5 275	5 552
50	2 240	2 802	3 340	3 851	4 332	4 780	5 194	5 569	5 904
55	-	2 744	3 336	3 902	4 440	4 946	5 418	5 853	6 248
60	-	2 656	3 305	3 930	4 526	5 093	5 626	6 123	6 581

**Current consumption in A**

30	5.75	6.10	6.50	6.90	7.29	7.65	7.93	8.11	8.17
35	5.80	6.17	6.59	7.04	7.48	7.88	8.22	8.48	8.61
40	5.81	6.21	6.67	7.16	7.65	8.12	8.53	8.86	9.08
45	5.78	6.22	6.73	7.27	7.82	8.36	8.85	9.26	9.58
50	5.71	6.20	6.76	7.36	7.98	8.60	9.17	9.68	10.09
55	-	6.14	6.76	7.43	8.13	8.83	9.50	10.10	10.62
60	-	6.04	6.73	7.48	8.26	9.05	9.82	10.54	11.17

**Mass flow in kg/h**

30	110	149	195	250	314	389	476	576	691
35	103	141	187	241	304	378	464	562	675
40	95	133	178	231	293	366	450	547	658
45	87	124	168	220	281	353	436	531	641
50	77	114	157	208	269	339	421	515	622
55	-	104	146	196	255	324	404	497	603
60	-	92	134	183	241	309	387	478	582

**Coefficient of performance (C.O.P.)**

30	1.63	1.94	2.31	2.75	3.27	3.89	4.61	5.46	6.46
35	1.43	1.71	2.04	2.42	2.87	3.39	4.00	4.71	5.55
40	1.25	1.50	1.78	2.11	2.50	2.94	3.46	4.06	4.77
45	1.08	1.30	1.55	1.84	2.16	2.54	2.98	3.49	4.08
50	0.92	1.12	1.34	1.58	1.86	2.19	2.56	2.99	3.49
55	-	0.95	1.14	1.35	1.59	1.86	2.18	2.55	2.97
60	-	0.78	0.95	1.13	1.33	1.57	1.84	2.15	2.51

**Nominal performance at to = -10 °C, tc = 45 °C**

Cooling capacity	9 098	W
Power input	4 204	W
Current consumption	7.82	A
Mass flow	281	kg/h
C.O.P.	2.16	

**Pressure switch settings**

Maximum HP switch setting	27.7	bar(g)
Minimum LP switch setting	1	bar(g)
LP pump down setting	1.3	bar(g)

**Sound power data**

Sound power level	80	dB(A)
With acoustic hood	74	dB(A)

to: Evaporating temperature at dew point

tc: Condensing temperature at dew point

Rating conditions : Superheat = 11.1 K , Subcooling = 8.3 K

Tolerance according EN12900

**Performance data at 50 Hz, EN 12900 rating conditions**
**R407A**

Cond. temp. in °C (tc)	Evaporating temperature in °C (to)							
	-30	-25	-20	-15	-10	-5	0	5

**Cooling capacity in W**

30	2 593	3 844	5 409	7 337	9 674	12 469	15 769	19 622	24 077
35	2 214	3 397	4 873	6 691	8 898	11 542	14 670	18 332	22 573
40	1 831	2 940	4 322	6 024	8 095	10 582	13 533	16 996	21 018
45	1 453	2 482	3 763	5 344	7 272	9 597	12 364	15 623	19 420
50	-	2 032	3 206	4 660	6 440	8 595	11 173	14 222	17 789
55	-	-	2 660	3 980	5 607	7 587	9 970	12 802	16 132
60	-	-	-	3 314	4 781	6 580	8 761	11 371	14 458

**Power input in W**

30	1 826	2 210	2 574	2 912	3 219	3 489	3 716	3 896	4 022
35	1 787	2 210	2 615	2 996	3 348	3 666	3 944	4 176	4 357
40	1 726	2 190	2 638	3 066	3 467	3 835	4 166	4 454	4 693
45	1 638	2 147	2 642	3 119	3 572	3 994	4 382	4 728	5 028
50	-	2 079	2 625	3 154	3 661	4 141	4 588	4 996	5 360
55	-	-	2 583	3 167	3 733	4 273	4 782	5 255	5 687
60	-	-	-	3 158	3 784	4 388	4 963	5 504	6 007

**Current consumption in A**

30	5.15	5.49	5.88	6.28	6.67	7.03	7.32	7.52	7.59
35	5.18	5.52	5.93	6.36	6.79	7.20	7.56	7.83	8.00
40	5.18	5.54	5.97	6.43	6.92	7.39	7.81	8.17	8.43
45	5.15	5.53	5.99	6.50	7.04	7.57	8.08	8.53	8.89
50	-	5.48	5.98	6.54	7.14	7.75	8.35	8.89	9.37
55	-	-	5.94	6.56	7.23	7.92	8.61	9.26	9.86
60	-	-	-	6.54	7.29	8.07	8.86	9.63	10.35

**Mass flow in kg/h**

30	62	90	124	165	214	270	337	413	500
35	55	84	118	158	206	263	329	405	492
40	49	77	110	150	198	254	320	395	481
45	41	69	102	142	189	244	309	384	470
50	-	60	93	132	178	233	297	371	456
55	-	-	83	121	167	221	284	357	441
60	-	-	-	110	154	207	269	341	424

**Coefficient of performance (C.O.P.)**

30	1.42	1.74	2.10	2.52	3.01	3.57	4.24	5.04	5.99
35	1.24	1.54	1.86	2.23	2.66	3.15	3.72	4.39	5.18
40	1.06	1.34	1.64	1.96	2.34	2.76	3.25	3.82	4.48
45	0.89	1.16	1.42	1.71	2.04	2.40	2.82	3.30	3.86
50	-	0.98	1.22	1.48	1.76	2.08	2.44	2.85	3.32
55	-	-	1.03	1.26	1.50	1.78	2.08	2.44	2.84
60	-	-	-	1.05	1.26	1.50	1.77	2.07	2.41

**Nominal performance at to = -10 °C, tc = 45 °C**

Cooling capacity	7 272	W
Power input	3 572	W
Current consumption	7.04	A
Mass flow	189	kg/h
C.O.P.	2.04	

**Pressure switch settings**

Maximum HP switch setting	25.8	bar(g)
Minimum LP switch setting	0.9	bar(g)
LP pump down setting	1.2	bar(g)

**Sound power data**

Sound power level	79	dB(A)
With acoustic hood	73	dB(A)

to: Evaporating temperature at dew point

tc: Condensing temperature at dew point

Rating conditions : Superheat = 10 K , Subcooling = 0 K

Tolerance according EN12900

**Performance data at 50 Hz, ARI rating conditions**
**R407A**

Cond. temp. in °C (tc)	Evaporating temperature in °C (to)								
	-30	-25	-20	-15	-10	-5	0	5	10

**Cooling capacity in W**

30	2 804	4 151	5 834	7 901	10 405	13 394	16 920	21 030	25 776
35	2 409	3 690	5 285	7 245	9 621	12 462	15 820	19 743	24 282
40	2 006	3 215	4 717	6 564	8 806	11 493	14 677	18 407	22 733
45	1 605	2 736	4 139	5 866	7 968	10 496	13 501	17 032	21 140
50	-	2 261	3 559	5 161	7 118	9 481	12 300	15 628	19 514
55	-	-	2 988	4 458	6 264	8 456	11 087	14 206	17 866
60	-	-	-	3 766	5 416	7 433	9 870	12 779	16 210

**Power input in W**

30	1 826	2 210	2 574	2 912	3 219	3 489	3 716	3 896	4 022
35	1 787	2 210	2 615	2 996	3 348	3 666	3 944	4 176	4 357
40	1 726	2 190	2 638	3 066	3 467	3 835	4 166	4 454	4 693
45	1 638	2 147	2 642	3 119	3 572	3 994	4 382	4 728	5 028
50	-	2 079	2 625	3 154	3 661	4 141	4 588	4 996	5 360
55	-	-	2 583	3 167	3 733	4 273	4 782	5 255	5 687
60	-	-	-	3 158	3 784	4 388	4 963	5 504	6 007

**Current consumption in A**

30	5.15	5.49	5.88	6.28	6.67	7.03	7.32	7.52	7.59
35	5.18	5.52	5.93	6.36	6.79	7.20	7.56	7.83	8.00
40	5.18	5.54	5.97	6.43	6.92	7.39	7.81	8.17	8.43
45	5.15	5.53	5.99	6.50	7.04	7.57	8.08	8.53	8.89
50	-	5.48	5.98	6.54	7.14	7.75	8.35	8.89	9.37
55	-	-	5.94	6.56	7.23	7.92	8.61	9.26	9.86
60	-	-	-	6.54	7.29	8.07	8.86	9.63	10.35

**Mass flow in kg/h**

30	61	90	124	164	212	269	335	411	497
35	55	83	117	157	205	262	327	402	489
40	48	76	110	150	197	253	318	393	479
45	41	68	101	141	188	243	307	382	467
50	-	60	92	131	177	232	295	369	453
55	-	-	82	120	166	220	282	355	438
60	-	-	-	109	153	206	268	339	422

**Coefficient of performance (C.O.P.)**

30	1.54	1.88	2.27	2.71	3.23	3.84	4.55	5.40	6.41
35	1.35	1.67	2.02	2.42	2.87	3.40	4.01	4.73	5.57
40	1.16	1.47	1.79	2.14	2.54	3.00	3.52	4.13	4.84
45	0.98	1.27	1.57	1.88	2.23	2.63	3.08	3.60	4.20
50	-	1.09	1.36	1.64	1.94	2.29	2.68	3.13	3.64
55	-	-	1.16	1.41	1.68	1.98	2.32	2.70	3.14
60	-	-	-	1.19	1.43	1.69	1.99	2.32	2.70

**Nominal performance at to = -10 °C, tc = 45 °C**

Cooling capacity	7 968	W
Power input	3 572	W
Current consumption	7.04	A
Mass flow	188	kg/h
C.O.P.	2.23	

**Pressure switch settings**

Maximum HP switch setting	25.8	bar(g)
Minimum LP switch setting	0.9	bar(g)
LP pump down setting	1.2	bar(g)

**Sound power data**

Sound power level	79	dB(A)
With acoustic hood	73	dB(A)

to: Evaporating temperature at dew point

tc: Condensing temperature at dew point

Rating conditions : Superheat = 11.1 K , Subcooling = 8.3 K

Tolerance according EN12900

**Performance data at 50 Hz, EN 12900 rating conditions**
**R407F**

Cond. temp. in °C (tc)	Evaporating temperature in °C (to)								
	-30	-25	-20	-15	-10	-5	0	5	10

**Cooling capacity in W**

30	-	4 202	5 960	8 127	10 758	13 912	17 642	22 006	27 060
35	-	3 614	5 215	7 191	9 597	12 490	15 926	19 960	24 649
40	-	3 111	4 581	6 390	8 595	11 252	14 417	18 146	22 495
45	-	2 674	4 037	5 704	7 732	10 177	13 095	16 543	20 576
50	-	-	3 562	5 111	6 987	9 245	11 941	15 132	18 874
55	-	-	-	4 593	6 340	8 435	10 934	13 893	17 367
60	-	-	-	-	-	-	-	-	-

**Power input in W**

30	-	2 344	2 719	3 072	3 386	3 643	3 828	3 923	3 911
35	-	2 350	2 762	3 162	3 534	3 861	4 126	4 313	4 404
40	-	2 356	2 797	3 237	3 660	4 049	4 388	4 659	4 846
45	-	2 375	2 837	3 310	3 777	4 221	4 626	4 974	5 250
50	-	-	2 898	3 396	3 899	4 391	4 855	5 273	5 630
55	-	-	-	3 507	4 040	4 572	5 088	5 569	5 999
60	-	-	-	-	-	-	-	-	-

**Current consumption in A**

30	-	5.50	5.91	6.35	6.78	7.15	7.43	7.59	7.59
35	-	5.60	6.03	6.49	6.96	7.39	7.75	8.00	8.11
40	-	5.64	6.09	6.59	7.10	7.60	8.04	8.39	8.61
45	-	5.64	6.11	6.66	7.23	7.80	8.34	8.79	9.13
50	-	-	6.14	6.73	7.37	8.03	8.66	9.23	9.70
55	-	-	-	6.83	7.55	8.30	9.03	9.73	10.34
60	-	-	-	-	-	-	-	-	-

**Mass flow in kg/h**

30	-	87	121	163	213	271	340	419	509
35	-	78	111	151	199	255	320	396	484
40	-	71	103	141	187	241	304	377	462
45	-	65	96	133	177	229	291	362	444
50	-	-	90	126	169	221	281	350	430
55	-	-	-	121	164	214	273	341	420
60	-	-	-	-	-	-	-	-	-

**Coefficient of performance (C.O.P.)**

30	-	1.79	2.19	2.65	3.18	3.82	4.61	5.61	6.92
35	-	1.54	1.89	2.27	2.72	3.24	3.86	4.63	5.60
40	-	1.32	1.64	1.97	2.35	2.78	3.29	3.89	4.64
45	-	1.13	1.42	1.72	2.05	2.41	2.83	3.33	3.92
50	-	-	1.23	1.51	1.79	2.11	2.46	2.87	3.35
55	-	-	-	1.31	1.57	1.84	2.15	2.49	2.90
60	-	-	-	-	-	-	-	-	-

**Nominal performance at to = -10 °C, tc = 45 °C**

Cooling capacity	7 732	W
Power input	3 777	W
Current consumption	7.23	A
Mass flow	177	kg/h
C.O.P.	2.05	

**Pressure switch settings**

Maximum HP switch setting	24	bar(g)
Minimum LP switch setting	1	bar(g)
LP pump down setting	1.26	bar(g)

**Sound power data**

Sound power level	79	dB(A)
With acoustic hood	73	dB(A)

to: Evaporating temperature at dew point

tc: Condensing temperature at dew point

Rating conditions : Superheat = 10 K , Subcooling = 0 K

Tolerance according EN12900

**Performance data at 50 Hz, ARI rating conditions**
**R407F**

Cond. temp. in °C (tc)	Evaporating temperature in °C (to)								
	-30	-25	-20	-15	-10	-5	0	5	10

**Cooling capacity in W**

30	-	4 504	6 381	8 692	11 496	14 852	18 817	23 452	28 814
35	-	3 891	5 609	7 726	10 300	13 391	17 057	21 358	26 352
40	-	3 368	4 953	6 901	9 271	12 123	15 515	19 508	24 160
45	-	2 914	4 392	6 197	8 389	11 028	14 173	17 884	22 220
50	-	-	3 905	5 594	7 636	10 088	13 013	16 469	20 516
55	-	-	-	5 074	6 992	9 287	12 019	15 248	19 035
60	-	-	-	-	-	-	-	-	-

**Power input in W**

30	-	2 344	2 719	3 072	3 386	3 643	3 828	3 923	3 911
35	-	2 350	2 762	3 162	3 534	3 861	4 126	4 313	4 404
40	-	2 356	2 797	3 237	3 660	4 049	4 388	4 659	4 846
45	-	2 375	2 837	3 310	3 777	4 221	4 626	4 974	5 250
50	-	-	2 898	3 396	3 899	4 391	4 855	5 273	5 630
55	-	-	-	3 507	4 040	4 572	5 088	5 569	5 999
60	-	-	-	-	-	-	-	-	-

**Current consumption in A**

30	-	5.50	5.91	6.35	6.78	7.15	7.43	7.59	7.59
35	-	5.60	6.03	6.49	6.96	7.39	7.75	8.00	8.11
40	-	5.64	6.09	6.59	7.10	7.60	8.04	8.39	8.61
45	-	5.64	6.11	6.66	7.23	7.80	8.34	8.79	9.13
50	-	-	6.14	6.73	7.37	8.03	8.66	9.23	9.70
55	-	-	-	6.83	7.55	8.30	9.03	9.73	10.34
60	-	-	-	-	-	-	-	-	-

**Mass flow in kg/h**

30	-	86	121	162	211	270	337	416	506
35	-	78	111	150	197	253	318	394	481
40	-	71	102	140	186	239	302	375	459
45	-	64	95	132	176	228	289	360	441
50	-	-	89	125	168	219	279	348	427
55	-	-	-	120	163	213	271	339	417
60	-	-	-	-	-	-	-	-	-

**Coefficient of performance (C.O.P.)**

30	-	1.92	2.35	2.83	3.40	4.08	4.92	5.98	7.37
35	-	1.66	2.03	2.44	2.91	3.47	4.13	4.95	5.98
40	-	1.43	1.77	2.13	2.53	2.99	3.54	4.19	4.99
45	-	1.23	1.55	1.87	2.22	2.61	3.06	3.60	4.23
50	-	-	1.35	1.65	1.96	2.30	2.68	3.12	3.64
55	-	-	-	1.45	1.73	2.03	2.36	2.74	3.17
60	-	-	-	-	-	-	-	-	-

**Nominal performance at to = -10 °C, tc = 45 °C**

Cooling capacity	8 389	W
Power input	3 777	W
Current consumption	7.23	A
Mass flow	176	kg/h
C.O.P.	2.22	

**Pressure switch settings**

Maximum HP switch setting	24	bar(g)
Minimum LP switch setting	1	bar(g)
LP pump down setting	1.26	bar(g)

**Sound power data**

Sound power level	79	dB(A)
With acoustic hood	73	dB(A)

to: Evaporating temperature at dew point

tc: Condensing temperature at dew point

Rating conditions : Superheat = 11.1 K , Subcooling = 8.3 K

Tolerance according EN12900

**Performance data at 50 Hz, EN 12900 rating conditions**
**R134a**

Cond. temp. in °C (tc)	Evaporating temperature in °C (to)							
	-25	-20	-10	-5	0	5	10	15

**Cooling capacity in W**

35	1 831	2 680	5 138	6 841	8 923	11 432	14 413	17 915	21 985
40	1 566	2 362	4 658	6 252	8 207	10 569	13 386	16 704	20 572
45	1 314	2 058	4 192	5 678	7 505	9 721	12 373	15 508	19 174
50	1 077	1 768	3 741	5 118	6 818	8 888	11 376	14 328	17 792
55	-	-	3 306	4 574	6 147	8 072	10 395	13 165	16 427
60	-	-	-	4 047	5 493	7 272	9 431	12 018	15 079
65	-	-	-	-	4 855	6 489	8 485	10 889	13 749
75	-	-	-	-	-	-	6 647	8 687	11 145

**Power input in W**

35	1 283	1 575	2 067	2 267	2 434	2 568	2 667	2 730	2 757
40	1 241	1 564	2 121	2 353	2 553	2 719	2 852	2 949	3 011
45	1 182	1 539	2 166	2 433	2 669	2 872	3 041	3 176	3 274
50	1 101	1 496	2 199	2 505	2 780	3 023	3 232	3 406	3 546
55	-	-	2 218	2 566	2 883	3 169	3 421	3 638	3 821
60	-	-	-	2 613	2 975	3 306	3 604	3 869	4 098
65	-	-	-	-	3 053	3 433	3 780	4 094	4 373
75	-	-	-	-	-	-	4 095	4 518	4 907

**Current consumption in A**

35	5.40	5.44	5.66	5.81	5.97	6.14	6.30	6.44	6.55
40	5.31	5.39	5.68	5.86	6.05	6.23	6.40	6.55	6.66
45	5.18	5.33	5.71	5.93	6.15	6.36	6.56	6.72	6.85
50	5.01	5.22	5.73	6.00	6.27	6.53	6.76	6.95	7.10
55	-	-	5.72	6.06	6.39	6.70	6.99	7.23	7.42
60	-	-	-	6.10	6.50	6.88	7.23	7.53	7.77
65	-	-	-	-	6.59	7.05	7.47	7.84	8.15
75	-	-	-	-	-	-	7.90	8.45	8.93

**Mass flow in kg/h**

35	46	67	122	159	203	255	315	386	466
40	42	62	117	153	196	247	307	376	456
45	37	57	111	146	189	239	298	367	446
50	33	52	105	140	181	231	289	357	435
55	-	-	98	133	174	223	280	347	424
60	-	-	-	126	166	214	271	337	413
65	-	-	-	-	158	205	261	326	402
75	-	-	-	-	-	-	241	304	378

**Coefficient of performance (C.O.P.)**

35	1.43	1.70	2.49	3.02	3.67	4.45	5.40	6.56	7.97
40	1.26	1.51	2.20	2.66	3.21	3.89	4.69	5.66	6.83
45	1.11	1.34	1.94	2.33	2.81	3.38	4.07	4.88	5.86
50	0.98	1.18	1.70	2.04	2.45	2.94	3.52	4.21	5.02
55	-	-	1.49	1.78	2.13	2.55	3.04	3.62	4.30
60	-	-	-	1.55	1.85	2.20	2.62	3.11	3.68
65	-	-	-	-	1.59	1.89	2.24	2.66	3.14
75	-	-	-	-	-	-	1.62	1.92	2.27

**Nominal performance at to = 5 °C, tc = 50 °C**

Cooling capacity	8 888	W
Power input	3 023	W
Current consumption	6.53	A
Mass flow	231	kg/h
C.O.P.	2.94	

**Pressure switch settings**

Maximum HP switch setting	20.2	bar(g)
Minimum LP switch setting	0.1	bar(g)
LP pump down setting	0.4	bar(g)

**Sound power data**

Sound power level	0	dB(A)
With acoustic hood	0	dB(A)

to: Evaporating temperature at dew point

tc: Condensing temperature at dew point

Rating conditions : Superheat = 10 K , Subcooling = 0 K

Tolerance according EN12900

Danfoss can accept no responsibility for possible errors in catalogues, brochures and other printed material. Danfoss reserves the right to alter its products without notice. This also applies to products already on order provided that such alternations can be made without subsequential changes being necessary in specifications already agreed. All trademarks in this material are property of the respective companies. Danfoss, the Danfoss logotype and Maneurop are trademarks of Danfoss A/S. All rights reserved.

Performance data at 50 Hz, ARI rating conditions

R134a

Cond. temp. in °C (tc)	Evaporating temperature in °C (to)							
	-25	-20	-10	-5	0	5	10	15

Cooling capacity in W

35	1 990	2 908	5 556	7 385	9 618	12 303	15 490	19 227	23 564
40	1 712	2 577	5 063	6 783	8 889	11 428	14 451	18 007	22 143
45	1 447	2 260	4 584	6 196	8 174	10 568	13 427	16 801	20 739
50	-	1 956	4 119	5 622	7 473	9 722	12 418	15 612	19 351
55	-	-	3 669	5 064	6 788	8 892	11 426	14 439	17 981
60	-	-	-	4 521	6 119	8 079	10 451	13 286	16 631
65	-	-	-	-	-	7 284	9 496	12 152	15 303
75	-	-	-	-	-	-	7 648	9 956	12 726

Power input in W

35	1 283	1 575	2 067	2 267	2 434	2 568	2 667	2 730	2 757
40	1 241	1 564	2 121	2 353	2 553	2 719	2 852	2 949	3 011
45	1 182	1 539	2 166	2 433	2 669	2 872	3 041	3 176	3 274
50	-	1 496	2 199	2 505	2 780	3 023	3 232	3 406	3 546
55	-	-	2 218	2 566	2 883	3 169	3 421	3 638	3 821
60	-	-	-	2 613	2 975	3 306	3 604	3 869	4 098
65	-	-	-	-	-	3 433	3 780	4 094	4 373
75	-	-	-	-	-	-	4 095	4 518	4 907

Current consumption in A

35	5.40	5.44	5.66	5.81	5.97	6.14	6.30	6.44	6.55
40	5.31	5.39	5.68	5.86	6.05	6.23	6.40	6.55	6.66
45	5.18	5.33	5.71	5.93	6.15	6.36	6.56	6.72	6.85
50	-	5.22	5.73	6.00	6.27	6.53	6.76	6.95	7.10
55	-	-	5.72	6.06	6.39	6.70	6.99	7.23	7.42
60	-	-	-	6.10	6.50	6.88	7.23	7.53	7.77
65	-	-	-	-	-	7.05	7.47	7.84	8.15
75	-	-	-	-	-	-	7.90	8.45	8.93

Mass flow in kg/h

35	46	66	122	158	202	253	314	383	464
40	42	62	116	152	195	246	305	374	454
45	37	57	110	146	188	238	297	365	443
50	-	52	104	139	181	230	288	355	433
55	-	-	98	132	173	222	279	345	422
60	-	-	-	125	165	213	269	335	411
65	-	-	-	-	-	204	260	324	399
75	-	-	-	-	-	-	240	303	376

Coefficient of performance (C.O.P.)

35	1.55	1.85	2.69	3.26	3.95	4.79	5.81	7.04	8.55
40	1.38	1.65	2.39	2.88	3.48	4.20	5.07	6.11	7.36
45	1.22	1.47	2.12	2.55	3.06	3.68	4.41	5.29	6.33
50	-	1.31	1.87	2.24	2.69	3.22	3.84	4.58	5.46
55	-	-	1.65	1.97	2.35	2.81	3.34	3.97	4.71
60	-	-	-	1.73	2.06	2.44	2.90	3.43	4.06
65	-	-	-	-	-	2.12	2.51	2.97	3.50
75	-	-	-	-	-	-	1.87	2.20	2.59

Nominal performance at to = 7.2 °C, tc = 54.4 °C

Cooling capacity	10 058	W
Power input	3 264	W
Current consumption	6.81	A
Mass flow	247	kg/h
C.O.P.	3.08	

Pressure switch settings

Maximum HP switch setting	20.2	bar(g)
Minimum LP switch setting	0.1	bar(g)
LP pump down setting	0.4	bar(g)

Sound power data

Sound power level	0	dB(A)
With acoustic hood	0	dB(A)

to: Evaporating temperature at dew point

tc: Condensing temperature at dew point

Rating conditions : Superheat = 11.1 K , Subcooling = 8.3 K

Tolerance according EN12900

Danfoss can accept no responsibility for possible errors in catalogues, brochures and other printed material. Danfoss reserves the right to alter its products without notice. This also applies to products already on order provided that such alternations can be made without subsequential changes being necessary in specifications already agreed. All trademarks in this material are property of the respective companies. Danfoss, the Danfoss logotype and Maneurop are trademarks of Danfoss A/S. All rights reserved.

Performance data at 50 Hz, EN 12900 rating conditions

R407C

Cond. temp. in °C (tc)	Evaporating temperature in °C (to)							
	-15	-10	-5	0	5	10	15	

Cooling capacity in W

35	6 299	8 351	10 830	13 785	17 266	21 320	26 000	-	-
40	5 680	7 599	9 921	12 695	15 971	19 799	24 227	-	-
45	5 079	6 858	9 016	11 603	14 668	18 261	22 431	-	-
50	-	6 136	8 123	10 516	13 364	16 715	20 621	-	-
55	-	-	7 252	9 443	12 066	15 170	18 803	-	-
60	-	-	-	8 393	10 784	13 632	16 988	-	-
65	-	-	-	7 372	9 525	12 111	15 181	-	-

Power input in W

35	2 778	3 083	3 341	3 563	3 759	3 940	4 116	-	-
40	2 866	3 231	3 541	3 806	4 036	4 242	4 435	-	-
45	2 913	3 352	3 726	4 046	4 323	4 566	4 787	-	-
50	-	3 436	3 887	4 275	4 610	4 904	5 166	-	-
55	-	-	4 017	4 485	4 891	5 247	5 562	-	-
60	-	-	-	4 668	5 157	5 588	5 969	-	-
65	-	-	-	4 816	5 401	5 918	6 377	-	-

Current consumption in A

35	6.07	6.40	6.74	7.05	7.32	7.53	7.66	-	-
40	6.19	6.56	6.94	7.30	7.62	7.89	8.07	-	-
45	6.29	6.73	7.16	7.59	7.97	8.30	8.55	-	-
50	-	6.87	7.38	7.88	8.35	8.76	9.09	-	-
55	-	-	7.57	8.17	8.73	9.24	9.67	-	-
60	-	-	-	8.42	9.10	9.72	10.27	-	-
65	-	-	-	8.63	9.43	10.18	10.86	-	-

Mass flow in kg/h

35	137	178	227	285	351	428	515	-	-
40	130	170	219	275	341	416	502	-	-
45	122	162	209	265	329	404	489	-	-
50	-	154	200	254	317	390	474	-	-
55	-	-	190	243	304	376	458	-	-
60	-	-	-	231	291	361	442	-	-
65	-	-	-	219	277	346	424	-	-

Coefficient of performance (C.O.P.)

35	2.27	2.71	3.24	3.87	4.59	5.41	6.32	-	-
40	1.98	2.35	2.80	3.34	3.96	4.67	5.46	-	-
45	1.74	2.05	2.42	2.87	3.39	4.00	4.69	-	-
50	-	1.79	2.09	2.46	2.90	3.41	3.99	-	-
55	-	-	1.81	2.11	2.47	2.89	3.38	-	-
60	-	-	-	1.80	2.09	2.44	2.85	-	-
65	-	-	-	1.53	1.76	2.05	2.38	-	-

Nominal performance at to = 5 °C, tc = 50 °C

Cooling capacity	13 364	W
Power input	4 610	W
Current consumption	8.35	A
Mass flow	317	kg/h
C.O.P.	2.90	



Pressure switch settings

Maximum HP switch setting	29.4	bar(g)
Minimum LP switch setting	1.4	bar(g)
LP pump down setting	1.7	bar(g)

Sound power data

Sound power level	83	dB(A)
With acoustic hood	77	dB(A)

to: Evaporating temperature at dew point

tc: Condensing temperature at dew point

Rating conditions : Superheat = 10 K , Subcooling = 0 K

Tolerance according EN12900



**Performance data at 50 Hz, ARI rating conditions**
**R407C**

Cond. temp. in °C (tc)	Evaporating temperature in °C (to)							
	-15	-10	-5	0	5	10	15	

**Cooling capacity in W**

35	6 780	8 978	11 629	14 785	18 498	22 819	27 798	-	-
40	6 147	8 212	10 708	13 685	17 196	21 292	26 025	-	-
45	5 532	7 457	9 790	12 581	15 883	19 748	24 228	-	-
50	-	6 722	8 884	11 482	14 568	18 196	22 416	-	-
55	-	-	7 999	10 396	13 261	16 644	20 598	-	-
60	-	-	-	9 335	11 970	15 103	18 786	-	-
65	-	-	-	8 307	10 707	13 584	16 990	-	-

**Power input in W**

35	2 778	3 083	3 341	3 563	3 759	3 940	4 116	-	-
40	2 866	3 231	3 541	3 806	4 036	4 242	4 435	-	-
45	2 913	3 352	3 726	4 046	4 323	4 566	4 787	-	-
50	-	3 436	3 887	4 275	4 610	4 904	5 166	-	-
55	-	-	4 017	4 485	4 891	5 247	5 562	-	-
60	-	-	-	4 668	5 157	5 588	5 969	-	-
65	-	-	-	4 816	5 401	5 918	6 377	-	-

**Current consumption in A**

35	6.07	6.40	6.74	7.05	7.32	7.53	7.66	-	-
40	6.19	6.56	6.94	7.30	7.62	7.89	8.07	-	-
45	6.29	6.73	7.16	7.59	7.97	8.30	8.55	-	-
50	-	6.87	7.38	7.88	8.35	8.76	9.09	-	-
55	-	-	7.57	8.17	8.73	9.24	9.67	-	-
60	-	-	-	8.42	9.10	9.72	10.27	-	-
65	-	-	-	8.63	9.43	10.18	10.86	-	-

**Mass flow in kg/h**

35	136	177	226	283	349	425	512	-	-
40	129	169	217	274	339	414	499	-	-
45	122	161	208	263	327	401	486	-	-
50	-	153	199	252	315	388	471	-	-
55	-	-	189	241	303	374	455	-	-
60	-	-	-	230	289	359	439	-	-
65	-	-	-	218	276	344	422	-	-

**Coefficient of performance (C.O.P.)**

35	2.44	2.91	3.48	4.15	4.92	5.79	6.75	-	-
40	2.15	2.54	3.02	3.60	4.26	5.02	5.87	-	-
45	1.90	2.22	2.63	3.11	3.67	4.32	5.06	-	-
50	-	1.96	2.29	2.69	3.16	3.71	4.34	-	-
55	-	-	1.99	2.32	2.71	3.17	3.70	-	-
60	-	-	-	2.00	2.32	2.70	3.15	-	-
65	-	-	-	1.73	1.98	2.30	2.66	-	-

**Nominal performance at to = 7.2 °C, tc = 54.4 °C**

Cooling capacity	14 851	W
Power input	5 016	W
Current consumption	8.91	A
Mass flow	334	kg/h
C.O.P.	2.96	

**Pressure switch settings**

Maximum HP switch setting	29.4	bar(g)
Minimum LP switch setting	1.4	bar(g)
LP pump down setting	1.7	bar(g)

**Sound power data**

Sound power level	83	dB(A)
With acoustic hood	77	dB(A)

to: Evaporating temperature at dew point

tc: Condensing temperature at dew point

Rating conditions : Superheat = 11.1 K , Subcooling = 8.3 K

Tolerance according EN12900

**Performance data at 60 Hz, EN 12900 rating conditions**
**R407C**

Cond. temp. in °C (tc)	Evaporating temperature in °C (to)							
	-15	-10	-5	0	5	10	15	

**Cooling capacity in W**

35	7 260	9 715	12 611	16 000	19 940	24 487	29 695	-	-
40	6 687	9 044	11 807	15 031	18 773	23 086	28 027	-	-
45	6 081	8 326	10 943	13 989	17 518	21 585	26 246	-	-
50	-	7 576	10 035	12 889	16 192	19 999	24 366	-	-
55	-	-	9 097	11 745	14 809	18 343	22 401	-	-
60	-	-	-	10 572	13 383	16 629	20 366	-	-
65	-	-	-	9 382	11 926	14 872	18 272	-	-

**Power input in W**

35	3 396	3 737	4 031	4 294	4 543	4 792	5 057	-	-
40	3 541	3 951	4 303	4 614	4 899	5 173	5 453	-	-
45	3 644	4 136	4 560	4 931	5 266	5 579	5 887	-	-
50	-	4 283	4 791	5 237	5 634	6 000	6 349	-	-
55	-	-	4 987	5 520	5 994	6 424	6 828	-	-
60	-	-	-	5 771	6 335	6 844	7 316	-	-
65	-	-	-	5 982	6 648	7 249	7 802	-	-

**Current consumption in A**

35	5.85	6.15	6.41	6.63	6.83	7.03	7.24	-	-
40	6.02	6.43	6.78	7.09	7.37	7.64	7.92	-	-
45	6.13	6.65	7.11	7.52	7.89	8.24	8.58	-	-
50	-	6.82	7.39	7.90	8.37	8.81	9.24	-	-
55	-	-	7.62	8.25	8.82	9.36	9.87	-	-
60	-	-	-	8.55	9.24	9.88	10.49	-	-
65	-	-	-	8.80	9.61	10.37	11.09	-	-

**Mass flow in kg/h**

35	158	207	265	331	406	491	588	-	-
40	153	203	260	326	401	485	581	-	-
45	147	197	254	319	393	477	572	-	-
50	-	190	247	311	384	467	560	-	-
55	-	-	238	302	373	455	546	-	-
60	-	-	-	291	361	440	529	-	-
65	-	-	-	279	347	424	511	-	-

**Coefficient of performance (C.O.P.)**

35	2.14	2.60	3.13	3.73	4.39	5.11	5.87	-	-
40	1.89	2.29	2.74	3.26	3.83	4.46	5.14	-	-
45	1.67	2.01	2.40	2.84	3.33	3.87	4.46	-	-
50	-	1.77	2.09	2.46	2.87	3.33	3.84	-	-
55	-	-	1.82	2.13	2.47	2.86	3.28	-	-
60	-	-	-	1.83	2.11	2.43	2.78	-	-
65	-	-	-	1.57	1.79	2.05	2.34	-	-

**Nominal performance at to = 5 °C, tc = 50 °C**

Cooling capacity	16 192	W
Power input	5 634	W
Current consumption	8.37	A
Mass flow	384	kg/h
C.O.P.	2.87	

**Pressure switch settings**

Maximum HP switch setting	29.4	bar(g)
Minimum LP switch setting	1.4	bar(g)
LP pump down setting	1.7	bar(g)

**Sound power data**

Sound power level	86	dB(A)
With acoustic hood	80	dB(A)

to: Evaporating temperature at dew point

tc: Condensing temperature at dew point

Rating conditions : Superheat = 10 K , Subcooling = 0 K

Tolerance according EN12900

**Performance data at 60 Hz, ARI rating conditions**
**R407C**

Cond. temp. in °C (tc)	Evaporating temperature in °C (to)							
	-15	-10	-5	0	5	10	15	

**Cooling capacity in W**

35	7 814	10 444	13 541	17 161	21 364	26 207	31 749	-	-
40	7 237	9 774	12 744	16 203	20 212	24 827	30 108	-	-
45	6 623	9 054	11 883	15 168	18 969	23 343	28 349	-	-
50	-	8 299	10 974	14 072	17 651	21 770	26 487	-	-
55	-	-	10 033	12 930	16 275	20 125	24 540	-	-
60	-	-	-	11 759	14 855	18 423	22 522	-	-
65	-	-	-	10 573	13 407	16 679	20 449	-	-

**Power input in W**

35	3 396	3 737	4 031	4 294	4 543	4 792	5 057	-	-
40	3 541	3 951	4 303	4 614	4 899	5 173	5 453	-	-
45	3 644	4 136	4 560	4 931	5 266	5 579	5 887	-	-
50	-	4 283	4 791	5 237	5 634	6 000	6 349	-	-
55	-	-	4 987	5 520	5 994	6 424	6 828	-	-
60	-	-	-	5 771	6 335	6 844	7 316	-	-
65	-	-	-	5 982	6 648	7 249	7 802	-	-

**Current consumption in A**

35	5.85	6.15	6.41	6.63	6.83	7.03	7.24	-	-
40	6.02	6.43	6.78	7.09	7.37	7.64	7.92	-	-
45	6.13	6.65	7.11	7.52	7.89	8.24	8.58	-	-
50	-	6.82	7.39	7.90	8.37	8.81	9.24	-	-
55	-	-	7.62	8.25	8.82	9.36	9.87	-	-
60	-	-	-	8.55	9.24	9.88	10.49	-	-
65	-	-	-	8.80	9.61	10.37	11.09	-	-

**Mass flow in kg/h**

35	157	206	263	329	403	488	584	-	-
40	152	202	259	324	398	483	578	-	-
45	146	196	253	318	391	474	568	-	-
50	-	189	245	309	382	464	557	-	-
55	-	-	237	300	371	452	542	-	-
60	-	-	-	289	359	438	526	-	-
65	-	-	-	277	345	422	508	-	-

**Coefficient of performance (C.O.P.)**

35	2.30	2.80	3.36	4.00	4.70	5.47	6.28	-	-
40	2.04	2.47	2.96	3.51	4.13	4.80	5.52	-	-
45	1.82	2.19	2.61	3.08	3.60	4.18	4.82	-	-
50	-	1.94	2.29	2.69	3.13	3.63	4.17	-	-
55	-	-	2.01	2.34	2.72	3.13	3.59	-	-
60	-	-	-	2.04	2.34	2.69	3.08	-	-
65	-	-	-	1.77	2.02	2.30	2.62	-	-

**Nominal performance at to = 7.2 °C, tc = 54.4 °C**

Cooling capacity	18 085	W
Power input	6 141	W
Current consumption	9.01	A
Mass flow	407	kg/h
C.O.P.	2.94	

**Pressure switch settings**

Maximum HP switch setting	29.4	bar(g)
Minimum LP switch setting	1.4	bar(g)
LP pump down setting	1.7	bar(g)

**Sound power data**

Sound power level	86	dB(A)
With acoustic hood	80	dB(A)

to: Evaporating temperature at dew point

tc: Condensing temperature at dew point

Rating conditions : Superheat = 11.1 K , Subcooling = 8.3 K

Tolerance according EN12900

Performance data at 60 Hz, EN 12900 rating conditions

R134a

Cond. temp. in °C (tc)	Evaporating temperature in °C (to)							
	-25	-20	-10	-5	0	5	10	15

Cooling capacity in W

35	2 197	3 216	6 166	8 209	10 708	13 718	17 296	21 499	26 382
40	1 879	2 834	5 590	7 503	9 848	12 683	16 063	20 045	24 686
45	1 577	2 469	5 031	6 813	9 006	11 665	14 848	18 610	23 009
50	1 292	2 121	4 489	6 142	8 182	10 666	13 651	17 194	21 350
55	-	-	3 967	5 489	7 377	9 686	12 474	15 798	19 712
60	-	-	-	4 856	6 591	8 727	11 318	14 422	18 095
65	-	-	-	-	5 827	7 787	10 182	13 067	16 499
75	-	-	-	-	-	-	7 976	10 424	13 374

Power input in W

35	1 540	1 890	2 481	2 721	2 921	3 081	3 200	3 276	3 309
40	1 490	1 877	2 545	2 823	3 063	3 263	3 422	3 539	3 613
45	1 418	1 846	2 599	2 920	3 203	3 447	3 650	3 811	3 929
50	1 321	1 795	2 639	3 006	3 336	3 627	3 878	4 088	4 255
55	-	-	2 662	3 080	3 460	3 802	4 105	4 366	4 585
60	-	-	-	3 135	3 571	3 967	4 325	4 642	4 918
65	-	-	-	-	3 664	4 119	4 536	4 913	5 248
75	-	-	-	-	-	-	4 915	5 421	5 888

Current consumption in A

35	5.63	5.67	5.90	6.06	6.23	6.40	6.57	6.71	6.83
40	5.54	5.63	5.93	6.11	6.31	6.50	6.67	6.83	6.94
45	5.41	5.56	5.96	6.18	6.41	6.64	6.84	7.01	7.14
50	5.22	5.45	5.97	6.26	6.54	6.81	7.05	7.25	7.41
55	-	-	5.97	6.32	6.67	6.99	7.29	7.54	7.74
60	-	-	-	6.36	6.78	7.18	7.54	7.85	8.10
65	-	-	-	-	6.87	7.35	7.79	8.18	8.50
75	-	-	-	-	-	-	8.24	8.82	9.32

Mass flow in kg/h

35	56	80	147	191	244	306	378	463	560
40	50	74	140	183	235	297	368	452	547
45	45	69	133	176	227	287	358	440	535
50	39	63	126	167	218	277	347	429	522
55	-	-	118	159	209	267	336	417	509
60	-	-	-	151	199	257	325	404	496
65	-	-	-	-	190	246	313	392	482
75	-	-	-	-	-	-	289	365	453

Coefficient of performance (C.O.P.)

35	1.43	1.70	2.49	3.02	3.67	4.45	5.40	6.56	7.97
40	1.26	1.51	2.20	2.66	3.21	3.89	4.69	5.66	6.83
45	1.11	1.34	1.94	2.33	2.81	3.38	4.07	4.88	5.86
50	0.98	1.18	1.70	2.04	2.45	2.94	3.52	4.21	5.02
55	-	-	1.49	1.78	2.13	2.55	3.04	3.62	4.30
60	-	-	-	1.55	1.85	2.20	2.62	3.11	3.68
65	-	-	-	-	1.59	1.89	2.24	2.66	3.14
75	-	-	-	-	-	-	1.62	1.92	2.27

Nominal performance at to = 5 °C, tc = 50 °C

Cooling capacity	10 666	W
Power input	3 627	W
Current consumption	6.81	A
Mass flow	277	kg/h
C.O.P.	2.94	

Pressure switch settings

Maximum HP switch setting	20.2	bar(g)
Minimum LP switch setting	0.1	bar(g)
LP pump down setting	0.4	bar(g)

Sound power data

Sound power level	0	dB(A)
With acoustic hood	0	dB(A)

to: Evaporating temperature at dew point

tc: Condensing temperature at dew point

Rating conditions : Superheat = 10 K , Subcooling = 0 K

Tolerance according EN12900

Danfoss can accept no responsibility for possible errors in catalogues, brochures and other printed material. Danfoss reserves the right to alter its products without notice. This also applies to products already on order provided that such alternations can be made without subsequential changes being necessary in specifications already agreed. All trademarks in this material are property of the respective companies. Danfoss, the Danfoss logotype and Maneurop are trademarks of Danfoss A/S. All rights reserved.

Performance data at 60 Hz, ARI rating conditions

R134a

Cond. temp. in °C (tc)	Evaporating temperature in °C (to)							
	-25	-20	-10	-5	0	5	10	15

Cooling capacity in W

35	2 388	3 489	6 667	8 862	11 541	14 764	18 588	23 072	28 276
40	2 054	3 093	6 075	8 140	10 666	13 714	17 341	21 608	26 572
45	1 736	2 712	5 501	7 435	9 808	12 681	16 112	20 161	24 887
50	-	2 347	4 943	6 746	8 968	11 666	14 902	18 734	23 222
55	-	-	4 403	6 076	8 146	10 671	13 711	17 327	21 578
60	-	-	-	5 425	7 343	9 695	12 542	15 943	19 958
65	-	-	-	-	-	8 741	11 395	14 582	18 364
75	-	-	-	-	-	-	9 178	11 947	15 271

Power input in W

35	1 540	1 890	2 481	2 721	2 921	3 081	3 200	3 276	3 309
40	1 490	1 877	2 545	2 823	3 063	3 263	3 422	3 539	3 613
45	1 418	1 846	2 599	2 920	3 203	3 447	3 650	3 811	3 929
50	-	1 795	2 639	3 006	3 336	3 627	3 878	4 088	4 255
55	-	-	2 662	3 080	3 460	3 802	4 105	4 366	4 585
60	-	-	-	3 135	3 571	3 967	4 325	4 642	4 918
65	-	-	-	-	-	4 119	4 536	4 913	5 248
75	-	-	-	-	-	-	4 915	5 421	5 888

Current consumption in A

35	5.63	5.67	5.90	6.06	6.23	6.40	6.57	6.71	6.83
40	5.54	5.63	5.93	6.11	6.31	6.50	6.67	6.83	6.94
45	5.41	5.56	5.96	6.18	6.41	6.64	6.84	7.01	7.14
50	-	5.45	5.97	6.26	6.54	6.81	7.05	7.25	7.41
55	-	-	5.97	6.32	6.67	6.99	7.29	7.54	7.74
60	-	-	-	6.36	6.78	7.18	7.54	7.85	8.10
65	-	-	-	-	-	7.35	7.79	8.18	8.50
75	-	-	-	-	-	-	8.24	8.82	9.32

Mass flow in kg/h

35	55	80	146	190	242	304	376	460	556
40	50	74	139	182	234	295	366	449	544
45	45	68	132	175	225	286	356	438	532
50	-	62	125	167	217	276	345	426	519
55	-	-	117	158	208	266	334	414	506
60	-	-	-	150	198	256	323	402	493
65	-	-	-	-	-	245	312	389	479
75	-	-	-	-	-	-	288	363	451

Coefficient of performance (C.O.P.)

35	1.55	1.85	2.69	3.26	3.95	4.79	5.81	7.04	8.55
40	1.38	1.65	2.39	2.88	3.48	4.20	5.07	6.11	7.36
45	1.22	1.47	2.12	2.55	3.06	3.68	4.41	5.29	6.33
50	-	1.31	1.87	2.24	2.69	3.22	3.84	4.58	5.46
55	-	-	1.65	1.97	2.35	2.81	3.34	3.97	4.71
60	-	-	-	1.73	2.06	2.44	2.90	3.43	4.06
65	-	-	-	-	-	2.12	2.51	2.97	3.50
75	-	-	-	-	-	-	1.87	2.20	2.59

Nominal performance at to = 7.2 °C, tc = 54.4 °C

Cooling capacity	12 070	W
Power input	3 917	W
Current consumption	7.10	A
Mass flow	296	kg/h
C.O.P.	3.08	

Pressure switch settings

Maximum HP switch setting	20.2	bar(g)
Minimum LP switch setting	0.1	bar(g)
LP pump down setting	0.4	bar(g)

Sound power data

Sound power level	0	dB(A)
With acoustic hood	0	dB(A)

to: Evaporating temperature at dew point

tc: Condensing temperature at dew point

Rating conditions : Superheat = 11.1 K , Subcooling = 8.3 K

Tolerance according EN12900

Danfoss can accept no responsibility for possible errors in catalogues, brochures and other printed material. Danfoss reserves the right to alter its products without notice. This also applies to products already on order provided that such alternations can be made without subsequential changes being necessary in specifications already agreed. All trademarks in this material are property of the respective companies. Danfoss, the Danfoss logotype and Maneurop are trademarks of Danfoss A/S. All rights reserved.

**Performance data at 60 Hz, EN 12900 rating conditions**
**R404A**

Cond. temp. in °C (tc)	Evaporating temperature in °C (to)							
	-30	-25	-20	-15	-10	-5	0	5

**Cooling capacity in W**

30	4 428	6 104	8 143	10 592	13 496	16 904	20 863	25 419	30 621
35	3 831	5 409	7 320	9 609	12 323	15 511	19 218	23 493	28 382
40	3 230	4 702	6 474	8 595	11 110	14 068	17 515	21 499	26 066
45	2 634	3 988	5 613	7 557	9 864	12 583	15 761	19 444	23 680
50	2 047	3 276	4 745	6 501	8 592	11 062	13 961	17 335	21 230
55	-	2 572	3 876	5 436	7 300	9 513	12 124	15 179	18 725
60	-	1 883	3 012	4 367	5 995	7 942	10 256	12 982	16 169

**Power input in W**

30	3 021	3 487	3 901	4 273	4 610	4 922	5 220	5 511	5 805
35	3 011	3 545	4 020	4 446	4 832	5 187	5 520	5 842	6 160
40	2 951	3 560	4 104	4 593	5 035	5 440	5 818	6 177	6 527
45	2 833	3 525	4 145	4 704	5 211	5 674	6 104	6 509	6 898
50	2 649	3 431	4 136	4 773	5 351	5 881	6 370	6 828	7 265
55	-	3 269	4 067	4 790	5 448	6 051	6 608	7 128	7 620
60	-	3 033	3 930	4 747	5 493	6 178	6 810	7 399	7 954

**Current consumption in A**

30	5.23	5.75	6.27	6.77	7.25	7.69	8.11	8.48	8.80
35	5.23	5.80	6.36	6.89	7.40	7.87	8.31	8.69	9.03
40	5.20	5.83	6.44	7.02	7.57	8.09	8.56	8.99	9.35
45	5.10	5.80	6.48	7.14	7.76	8.33	8.86	9.34	9.75
50	4.91	5.71	6.48	7.22	7.92	8.58	9.18	9.73	10.21
55	-	5.53	6.41	7.25	8.05	8.81	9.50	10.13	10.70
60	-	5.25	6.25	7.22	8.13	9.00	9.80	10.54	11.20

**Mass flow in kg/h**

30	139	188	244	310	385	471	569	680	805
35	130	179	235	300	375	460	558	668	791
40	119	168	224	289	363	448	544	653	776
45	106	155	211	276	350	434	529	637	758
50	92	141	197	261	334	417	511	618	737
55	-	125	180	244	316	398	492	597	715
60	-	106	162	225	296	377	469	573	689

**Coefficient of performance (C.O.P.)**

30	1.47	1.75	2.09	2.48	2.93	3.43	4.00	4.61	5.28
35	1.27	1.53	1.82	2.16	2.55	2.99	3.48	4.02	4.61
40	1.09	1.32	1.58	1.87	2.21	2.59	3.01	3.48	3.99
45	0.93	1.13	1.35	1.61	1.89	2.22	2.58	2.99	3.43
50	0.77	0.95	1.15	1.36	1.61	1.88	2.19	2.54	2.92
55	-	0.79	0.95	1.13	1.34	1.57	1.83	2.13	2.46
60	-	0.62	0.77	0.92	1.09	1.29	1.51	1.75	2.03

**Nominal performance at to = -10 °C, tc = 45 °C**

Cooling capacity	9 864	W
Power input	5 211	W
Current consumption	7.76	A
Mass flow	350	kg/h
C.O.P.	1.89	

**Pressure switch settings**

Maximum HP switch setting	27.7	bar(g)
Minimum LP switch setting	1	bar(g)
LP pump down setting	1.3	bar(g)

**Sound power data**

Sound power level	83	dB(A)
With acoustic hood	77	dB(A)

to: Evaporating temperature at dew point

tc: Condensing temperature at dew point

Rating conditions : Superheat = 10 K , Subcooling = 0 K

Tolerance according EN12900

**Performance data at 60 Hz, ARI rating conditions**
**R404A**

Cond. temp. in °C (tc)	Evaporating temperature in °C (to)								
	-30	-25	-20	-15	-10	-5	0	5	10

**Cooling capacity in W**

30	4 929	6 777	9 017	11 699	14 874	18 589	22 895	27 840	33 475
35	4 310	6 067	8 185	10 714	13 705	17 206	21 268	25 941	31 273
40	3 683	5 339	7 326	9 694	12 492	15 772	19 582	23 973	28 995
45	3 052	4 601	6 449	8 646	11 244	14 293	17 844	21 947	26 652
50	2 425	3 858	5 559	7 578	9 968	12 781	16 066	19 874	24 257
55	-	3 117	4 664	6 500	8 677	11 247	14 261	17 772	21 830
60	-	2 381	3 772	5 421	7 383	9 710	12 456	15 671	19 409

**Power input in W**

30	3 021	3 487	3 901	4 273	4 610	4 922	5 220	5 511	5 805
35	3 011	3 545	4 020	4 446	4 832	5 187	5 520	5 842	6 160
40	2 951	3 560	4 104	4 593	5 035	5 440	5 818	6 177	6 527
45	2 833	3 525	4 145	4 704	5 211	5 674	6 104	6 509	6 898
50	2 649	3 431	4 136	4 773	5 351	5 881	6 370	6 828	7 265
55	-	3 269	4 067	4 790	5 448	6 051	6 608	7 128	7 620
60	-	3 033	3 930	4 747	5 493	6 178	6 810	7 399	7 954

**Current consumption in A**

30	5.23	5.75	6.27	6.77	7.25	7.69	8.11	8.48	8.80
35	5.23	5.80	6.36	6.89	7.40	7.87	8.31	8.69	9.03
40	5.20	5.83	6.44	7.02	7.57	8.09	8.56	8.99	9.35
45	5.10	5.80	6.48	7.14	7.76	8.33	8.86	9.34	9.75
50	4.91	5.71	6.48	7.22	7.92	8.58	9.18	9.73	10.21
55	-	5.53	6.41	7.25	8.05	8.81	9.50	10.13	10.70
60	-	5.25	6.25	7.22	8.13	9.00	9.80	10.54	11.20

**Mass flow in kg/h**

30	138	187	243	308	383	468	565	676	800
35	129	178	234	298	373	458	554	663	786
40	118	167	223	287	361	445	541	649	770
45	105	154	210	274	348	431	526	632	752
50	91	140	196	259	332	415	508	614	732
55	-	124	179	243	314	396	488	593	710
60	-	106	161	223	294	375	466	569	684

**Coefficient of performance (C.O.P.)**

30	1.63	1.94	2.31	2.74	3.23	3.78	4.39	5.05	5.77
35	1.43	1.71	2.04	2.41	2.84	3.32	3.85	4.44	5.08
40	1.25	1.50	1.79	2.11	2.48	2.90	3.37	3.88	4.44
45	1.08	1.31	1.56	1.84	2.16	2.52	2.92	3.37	3.86
50	0.92	1.12	1.34	1.59	1.86	2.17	2.52	2.91	3.34
55	-	0.95	1.15	1.36	1.59	1.86	2.16	2.49	2.87
60	-	0.79	0.96	1.14	1.34	1.57	1.83	2.12	2.44

**Nominal performance at to = -10 °C, tc = 45 °C**

Cooling capacity	11 244	W
Power input	5 211	W
Current consumption	7.76	A
Mass flow	348	kg/h
C.O.P.	2.16	

**Pressure switch settings**

Maximum HP switch setting	27.7	bar(g)
Minimum LP switch setting	1	bar(g)
LP pump down setting	1.3	bar(g)

**Sound power data**

Sound power level	83	dB(A)
With acoustic hood	77	dB(A)

to: Evaporating temperature at dew point

tc: Condensing temperature at dew point

Rating conditions : Superheat = 11.1 K , Subcooling = 8.3 K

Tolerance according EN12900

**Performance data at 60 Hz, EN 12900 rating conditions**
**R407A**

Cond. temp. in °C (tc)	Evaporating temperature in °C (to)							
	-30	-25	-20	-15	-10	-5	0	5

**Cooling capacity in W**

30	3 112	4 613	6 491	8 804	11 609	14 962	18 922	23 547	28 892
35	2 657	4 076	5 848	8 029	10 678	13 850	17 605	21 998	27 088
40	2 197	3 528	5 186	7 229	9 714	12 698	16 239	20 395	25 222
45	1 744	2 979	4 516	6 413	8 727	11 516	14 837	18 747	23 304
50	-	2 438	3 848	5 592	7 728	10 315	13 408	17 066	21 346
55	-	-	3 192	4 776	6 728	9 105	11 964	15 362	19 358
60	-	-	-	3 977	5 737	7 896	10 514	13 646	17 350

**Power input in W**

30	2 191	2 652	3 089	3 495	3 863	4 187	4 460	4 675	4 826
35	2 145	2 652	3 138	3 596	4 018	4 399	4 732	5 011	5 228
40	2 071	2 628	3 166	3 679	4 160	4 602	4 999	5 345	5 631
45	1 966	2 576	3 171	3 743	4 286	4 793	5 258	5 674	6 034
50	-	2 495	3 150	3 784	4 393	4 969	5 505	5 995	6 432
55	-	-	3 099	3 801	4 479	5 127	5 738	6 307	6 825
60	-	-	-	3 790	4 541	5 265	5 955	6 605	7 208

**Current consumption in A**

30	5.37	5.72	6.13	6.55	6.96	7.33	7.64	7.84	7.92
35	5.40	5.76	6.18	6.63	7.09	7.51	7.88	8.17	8.34
40	5.40	5.78	6.22	6.71	7.21	7.70	8.15	8.52	8.79
45	5.37	5.77	6.24	6.78	7.34	7.90	8.42	8.89	9.27
50	-	5.72	6.24	6.82	7.45	8.09	8.70	9.28	9.77
55	-	-	6.19	6.84	7.54	8.26	8.98	9.66	10.28
60	-	-	-	6.82	7.60	8.42	9.24	10.04	10.79

**Mass flow in kg/h**

30	74	108	149	198	256	325	404	496	600
35	67	100	141	190	248	316	395	486	590
40	58	92	132	181	238	305	384	474	578
45	50	82	122	170	227	293	371	461	563
50	-	72	111	158	214	280	357	445	547
55	-	-	99	145	200	265	341	428	529
60	-	-	-	131	185	249	323	410	509

**Coefficient of performance (C.O.P.)**

30	1.42	1.74	2.10	2.52	3.01	3.57	4.24	5.04	5.99
35	1.24	1.54	1.86	2.23	2.66	3.15	3.72	4.39	5.18
40	1.06	1.34	1.64	1.96	2.34	2.76	3.25	3.82	4.48
45	0.89	1.16	1.42	1.71	2.04	2.40	2.82	3.30	3.86
50	-	0.98	1.22	1.48	1.76	2.08	2.44	2.85	3.32
55	-	-	1.03	1.26	1.50	1.78	2.08	2.44	2.84
60	-	-	-	1.05	1.26	1.50	1.77	2.07	2.41

**Nominal performance at to = -10 °C, tc = 45 °C**

Cooling capacity	8 727	W
Power input	4 286	W
Current consumption	7.34	A
Mass flow	227	kg/h
C.O.P.	2.04	

**Pressure switch settings**

Maximum HP switch setting	25.8	bar(g)
Minimum LP switch setting	0.9	bar(g)
LP pump down setting	1.2	bar(g)

**Sound power data**

Sound power level	82	dB(A)
With acoustic hood	76	dB(A)

to: Evaporating temperature at dew point

tc: Condensing temperature at dew point

Rating conditions : Superheat = 10 K , Subcooling = 0 K

Tolerance according EN12900



**Performance data at 60 Hz, ARI rating conditions**
**R407A**

Cond. temp. in °C (tc)	Evaporating temperature in °C (to)							
	-30	-25	-20	-15	-10	-5	0	5

**Cooling capacity in W**

30	3 365	4 982	7 000	9 482	12 486	16 073	20 303	25 236	30 932
35	2 890	4 428	6 342	8 694	11 545	14 955	18 984	23 691	29 138
40	2 407	3 858	5 660	7 877	10 567	13 792	17 612	22 088	27 280
45	1 926	3 283	4 967	7 039	9 562	12 596	16 201	20 438	25 368
50	-	2 714	4 271	6 193	8 541	11 377	14 760	18 754	23 417
55	-	-	3 585	5 350	7 516	10 147	13 304	17 047	21 439
60	-	-	-	4 519	6 499	8 920	11 845	15 335	19 451

**Power input in W**

30	2 191	2 652	3 089	3 495	3 863	4 187	4 460	4 675	4 826
35	2 145	2 652	3 138	3 596	4 018	4 399	4 732	5 011	5 228
40	2 071	2 628	3 166	3 679	4 160	4 602	4 999	5 345	5 631
45	1 966	2 576	3 171	3 743	4 286	4 793	5 258	5 674	6 034
50	-	2 495	3 150	3 784	4 393	4 969	5 505	5 995	6 432
55	-	-	3 099	3 801	4 479	5 127	5 738	6 307	6 825
60	-	-	-	3 790	4 541	5 265	5 955	6 605	7 208

**Current consumption in A**

30	5.37	5.72	6.13	6.55	6.96	7.33	7.64	7.84	7.92
35	5.40	5.76	6.18	6.63	7.09	7.51	7.88	8.17	8.34
40	5.40	5.78	6.22	6.71	7.21	7.70	8.15	8.52	8.79
45	5.37	5.77	6.24	6.78	7.34	7.90	8.42	8.89	9.27
50	-	5.72	6.24	6.82	7.45	8.09	8.70	9.28	9.77
55	-	-	6.19	6.84	7.54	8.26	8.98	9.66	10.28
60	-	-	-	6.82	7.60	8.42	9.24	10.04	10.79

**Mass flow in kg/h**

30	74	107	148	197	255	323	402	493	597
35	66	100	140	189	246	314	392	483	586
40	58	91	132	180	237	303	381	471	574
45	49	82	122	169	225	292	369	458	560
50	-	72	111	157	213	278	355	443	544
55	-	-	99	145	199	264	339	426	526
60	-	-	-	131	184	247	321	407	506

**Coefficient of performance (C.O.P.)**

30	1.54	1.88	2.27	2.71	3.23	3.84	4.55	5.40	6.41
35	1.35	1.67	2.02	2.42	2.87	3.40	4.01	4.73	5.57
40	1.16	1.47	1.79	2.14	2.54	3.00	3.52	4.13	4.84
45	0.98	1.27	1.57	1.88	2.23	2.63	3.08	3.60	4.20
50	-	1.09	1.36	1.64	1.94	2.29	2.68	3.13	3.64
55	-	-	1.16	1.41	1.68	1.98	2.32	2.70	3.14
60	-	-	-	1.19	1.43	1.69	1.99	2.32	2.70

**Nominal performance at to = -10 °C, tc = 45 °C**

Cooling capacity	9 562	W
Power input	4 286	W
Current consumption	7.34	A
Mass flow	225	kg/h
C.O.P.	2.23	

**Pressure switch settings**

Maximum HP switch setting	25.8	bar(g)
Minimum LP switch setting	0.9	bar(g)
LP pump down setting	1.2	bar(g)

**Sound power data**

Sound power level	82	dB(A)
With acoustic hood	76	dB(A)

to: Evaporating temperature at dew point

tc: Condensing temperature at dew point

Rating conditions : Superheat = 11.1 K , Subcooling = 8.3 K

Tolerance according EN12900

**Performance data at 60 Hz, EN 12900 rating conditions**
**R407F**

Cond. temp. in °C (tc)	Evaporating temperature in °C (to)								
	-30	-25	-20	-15	-10	-5	0	5	10

**Cooling capacity in W**

30	-	5 043	7 152	9 752	12 910	16 694	21 170	26 407	32 472
35	-	4 337	6 258	8 629	11 517	14 988	19 111	23 952	29 579
40	-	3 733	5 497	7 668	10 314	13 502	17 300	21 775	26 993
45	-	3 209	4 844	6 845	9 278	12 212	15 714	19 852	24 691
50	-	-	4 274	6 134	8 384	11 094	14 330	18 159	22 649
55	-	-	-	5 512	7 609	10 123	13 121	16 671	20 841
60	-	-	-	-	-	-	-	-	-

**Power input in W**

30	-	2 813	3 263	3 687	4 063	4 372	4 593	4 707	4 694
35	-	2 820	3 314	3 794	4 241	4 633	4 951	5 175	5 285
40	-	2 828	3 356	3 884	4 392	4 859	5 265	5 591	5 815
45	-	2 850	3 405	3 972	4 533	5 066	5 551	5 969	6 300
50	-	-	3 477	4 075	4 679	5 270	5 826	6 328	6 756
55	-	-	-	4 209	4 848	5 487	6 105	6 682	7 199
60	-	-	-	-	-	-	-	-	-

**Current consumption in A**

30	-	5.73	6.17	6.63	7.07	7.46	7.75	7.92	7.92
35	-	5.84	6.29	6.77	7.26	7.71	8.08	8.34	8.45
40	-	5.88	6.35	6.87	7.41	7.93	8.39	8.75	8.98
45	-	5.88	6.38	6.94	7.54	8.14	8.69	9.17	9.53
50	-	-	6.40	7.02	7.69	8.37	9.03	9.63	10.12
55	-	-	-	7.13	7.88	8.65	9.42	10.15	10.78
60	-	-	-	-	-	-	-	-	-

**Mass flow in kg/h**

30	-	104	146	196	255	325	407	502	611
35	-	94	134	181	238	306	384	476	580
40	-	85	123	169	224	289	365	453	554
45	-	77	115	159	212	275	349	434	533
50	-	-	107	151	203	265	337	420	516
55	-	-	-	145	197	257	328	409	504
60	-	-	-	-	-	-	-	-	-

**Coefficient of performance (C.O.P.)**

30	-	1.79	2.19	2.65	3.18	3.82	4.61	5.61	6.92
35	-	1.54	1.89	2.27	2.72	3.24	3.86	4.63	5.60
40	-	1.32	1.64	1.97	2.35	2.78	3.29	3.89	4.64
45	-	1.13	1.42	1.72	2.05	2.41	2.83	3.33	3.92
50	-	-	1.23	1.51	1.79	2.11	2.46	2.87	3.35
55	-	-	-	1.31	1.57	1.84	2.15	2.49	2.90
60	-	-	-	-	-	-	-	-	-

**Nominal performance at to = -10 °C, tc = 45 °C**

Cooling capacity	9 278	W
Power input	4 533	W
Current consumption	7.54	A
Mass flow	212	kg/h
C.O.P.	2.05	

**Pressure switch settings**

Maximum HP switch setting	24	bar(g)
Minimum LP switch setting	1	bar(g)
LP pump down setting	1.26	bar(g)

**Sound power data**

Sound power level	82	dB(A)
With acoustic hood	76	dB(A)

to: Evaporating temperature at dew point

tc: Condensing temperature at dew point

Rating conditions : Superheat = 10 K , Subcooling = 0 K

Tolerance according EN12900

**Performance data at 60 Hz, ARI rating conditions**
**R407F**

Cond. temp. in °C (tc)	Evaporating temperature in °C (to)								
	-30	-25	-20	-15	-10	-5	0	5	10

**Cooling capacity in W**

30	-	5 405	7 657	10 431	13 795	17 822	22 581	28 143	34 577
35	-	4 670	6 731	9 271	12 360	16 069	20 469	25 630	31 623
40	-	4 042	5 944	8 281	11 125	14 547	18 618	23 410	28 992
45	-	3 497	5 270	7 436	10 067	13 234	17 008	21 461	26 664
50	-	-	4 686	6 713	9 163	12 106	15 616	19 763	24 619
55	-	-	-	6 089	8 391	11 144	14 423	18 298	22 842
60	-	-	-	-	-	-	-	-	-

**Power input in W**

30	-	2 813	3 263	3 687	4 063	4 372	4 593	4 707	4 694
35	-	2 820	3 314	3 794	4 241	4 633	4 951	5 175	5 285
40	-	2 828	3 356	3 884	4 392	4 859	5 265	5 591	5 815
45	-	2 850	3 405	3 972	4 533	5 066	5 551	5 969	6 300
50	-	-	3 477	4 075	4 679	5 270	5 826	6 328	6 756
55	-	-	-	4 209	4 848	5 487	6 105	6 682	7 199
60	-	-	-	-	-	-	-	-	-

**Current consumption in A**

30	-	5.73	6.17	6.63	7.07	7.46	7.75	7.92	7.92
35	-	5.84	6.29	6.77	7.26	7.71	8.08	8.34	8.45
40	-	5.88	6.35	6.87	7.41	7.93	8.39	8.75	8.98
45	-	5.88	6.38	6.94	7.54	8.14	8.69	9.17	9.53
50	-	-	6.40	7.02	7.69	8.37	9.03	9.63	10.12
55	-	-	-	7.13	7.88	8.65	9.42	10.15	10.78
60	-	-	-	-	-	-	-	-	-

**Mass flow in kg/h**

30	-	104	145	195	254	324	405	499	607
35	-	93	133	180	237	304	382	473	577
40	-	85	123	168	223	287	363	450	551
45	-	77	114	158	211	274	347	432	530
50	-	-	107	150	202	263	335	417	513
55	-	-	-	144	196	256	326	407	500
60	-	-	-	-	-	-	-	-	-

**Coefficient of performance (C.O.P.)**

30	-	1.92	2.35	2.83	3.40	4.08	4.92	5.98	7.37
35	-	1.66	2.03	2.44	2.91	3.47	4.13	4.95	5.98
40	-	1.43	1.77	2.13	2.53	2.99	3.54	4.19	4.99
45	-	1.23	1.55	1.87	2.22	2.61	3.06	3.60	4.23
50	-	-	1.35	1.65	1.96	2.30	2.68	3.12	3.64
55	-	-	-	1.45	1.73	2.03	2.36	2.74	3.17
60	-	-	-	-	-	-	-	-	-

**Nominal performance at to = -10 °C, tc = 45 °C**

Cooling capacity	10 067	W
Power input	4 533	W
Current consumption	7.54	A
Mass flow	211	kg/h
C.O.P.	2.22	

**Pressure switch settings**

Maximum HP switch setting	24	bar(g)
Minimum LP switch setting	1	bar(g)
LP pump down setting	1.26	bar(g)

**Sound power data**

Sound power level	82	dB(A)
With acoustic hood	76	dB(A)

to: Evaporating temperature at dew point

tc: Condensing temperature at dew point

Rating conditions : Superheat = 11.1 K , Subcooling = 8.3 K

Tolerance according EN12900

Performance data at 60 Hz, EN 12900 rating conditions

R134a

Cond. temp. in °C (tc)	Evaporating temperature in °C (to)							
	-25	-20	-10	-5	0	5	10	15

Cooling capacity in W

35	2 197	3 216	6 166	8 209	10 708	13 718	17 296	21 499	26 382
40	1 879	2 834	5 590	7 503	9 848	12 683	16 063	20 045	24 686
45	1 577	2 469	5 031	6 813	9 006	11 665	14 848	18 610	23 009
50	1 292	2 121	4 489	6 142	8 182	10 666	13 651	17 194	21 350
55	-	-	3 967	5 489	7 377	9 686	12 474	15 798	19 712
60	-	-	-	4 856	6 591	8 727	11 318	14 422	18 095
65	-	-	-	-	5 827	7 787	10 182	13 067	16 499
75	-	-	-	-	-	-	7 976	10 424	13 374

Power input in W

35	1 540	1 890	2 481	2 721	2 921	3 081	3 200	3 276	3 309
40	1 490	1 877	2 545	2 823	3 063	3 263	3 422	3 539	3 613
45	1 418	1 846	2 599	2 920	3 203	3 447	3 650	3 811	3 929
50	1 321	1 795	2 639	3 006	3 336	3 627	3 878	4 088	4 255
55	-	-	2 662	3 080	3 460	3 802	4 105	4 366	4 585
60	-	-	-	3 135	3 571	3 967	4 325	4 642	4 918
65	-	-	-	-	3 664	4 119	4 536	4 913	5 248
75	-	-	-	-	-	-	4 915	5 421	5 888

Current consumption in A

35	5.63	5.67	5.90	6.06	6.23	6.40	6.57	6.71	6.83
40	5.54	5.63	5.93	6.11	6.31	6.50	6.67	6.83	6.94
45	5.41	5.56	5.96	6.18	6.41	6.64	6.84	7.01	7.14
50	5.22	5.45	5.97	6.26	6.54	6.81	7.05	7.25	7.41
55	-	-	5.97	6.32	6.67	6.99	7.29	7.54	7.74
60	-	-	-	6.36	6.78	7.18	7.54	7.85	8.10
65	-	-	-	-	6.87	7.35	7.79	8.18	8.50
75	-	-	-	-	-	-	8.24	8.82	9.32

Mass flow in kg/h

35	56	80	147	191	244	306	378	463	560
40	50	74	140	183	235	297	368	452	547
45	45	69	133	176	227	287	358	440	535
50	39	63	126	167	218	277	347	429	522
55	-	-	118	159	209	267	336	417	509
60	-	-	-	151	199	257	325	404	496
65	-	-	-	-	190	246	313	392	482
75	-	-	-	-	-	-	289	365	453

Coefficient of performance (C.O.P.)

35	1.43	1.70	2.49	3.02	3.67	4.45	5.40	6.56	7.97
40	1.26	1.51	2.20	2.66	3.21	3.89	4.69	5.66	6.83
45	1.11	1.34	1.94	2.33	2.81	3.38	4.07	4.88	5.86
50	0.98	1.18	1.70	2.04	2.45	2.94	3.52	4.21	5.02
55	-	-	1.49	1.78	2.13	2.55	3.04	3.62	4.30
60	-	-	-	1.55	1.85	2.20	2.62	3.11	3.68
65	-	-	-	-	1.59	1.89	2.24	2.66	3.14
75	-	-	-	-	-	-	1.62	1.92	2.27

Nominal performance at to = 5 °C, tc = 50 °C

Cooling capacity	10 666	W
Power input	3 627	W
Current consumption	6.81	A
Mass flow	277	kg/h
C.O.P.	2.94	

Pressure switch settings

Maximum HP switch setting	20.2	bar(g)
Minimum LP switch setting	0.1	bar(g)
LP pump down setting	0.4	bar(g)

Sound power data

Sound power level	0	dB(A)
With acoustic hood	0	dB(A)

to: Evaporating temperature at dew point

tc: Condensing temperature at dew point

Rating conditions : Superheat = 10 K, Subcooling = 0 K

Tolerance according EN12900

Danfoss can accept no responsibility for possible errors in catalogues, brochures and other printed material. Danfoss reserves the right to alter its products without notice. This also applies to products already on order provided that such alternations can be made without subsequential changes being necessary in specifications already agreed. All trademarks in this material are property of the respective companies. Danfoss, the Danfoss logotype and Maneurop are trademarks of Danfoss A/S. All rights reserved.

Performance data at 60 Hz, ARI rating conditions

R134a

Cond. temp. in °C (tc)	Evaporating temperature in °C (to)							
	-25	-20	-10	-5	0	5	10	15

Cooling capacity in W

35	2 388	3 489	6 667	8 862	11 541	14 764	18 588	23 072	28 276
40	2 054	3 093	6 075	8 140	10 666	13 714	17 341	21 608	26 572
45	1 736	2 712	5 501	7 435	9 808	12 681	16 112	20 161	24 887
50	-	2 347	4 943	6 746	8 968	11 666	14 902	18 734	23 222
55	-	-	4 403	6 076	8 146	10 671	13 711	17 327	21 578
60	-	-	-	5 425	7 343	9 695	12 542	15 943	19 958
65	-	-	-	-	-	8 741	11 395	14 582	18 364
75	-	-	-	-	-	-	9 178	11 947	15 271

Power input in W

35	1 540	1 890	2 481	2 721	2 921	3 081	3 200	3 276	3 309
40	1 490	1 877	2 545	2 823	3 063	3 263	3 422	3 539	3 613
45	1 418	1 846	2 599	2 920	3 203	3 447	3 650	3 811	3 929
50	-	1 795	2 639	3 006	3 336	3 627	3 878	4 088	4 255
55	-	-	2 662	3 080	3 460	3 802	4 105	4 366	4 585
60	-	-	-	3 135	3 571	3 967	4 325	4 642	4 918
65	-	-	-	-	-	4 119	4 536	4 913	5 248
75	-	-	-	-	-	-	4 915	5 421	5 888

Current consumption in A

35	5.63	5.67	5.90	6.06	6.23	6.40	6.57	6.71	6.83
40	5.54	5.63	5.93	6.11	6.31	6.50	6.67	6.83	6.94
45	5.41	5.56	5.96	6.18	6.41	6.64	6.84	7.01	7.14
50	-	5.45	5.97	6.26	6.54	6.81	7.05	7.25	7.41
55	-	-	5.97	6.32	6.67	6.99	7.29	7.54	7.74
60	-	-	-	6.36	6.78	7.18	7.54	7.85	8.10
65	-	-	-	-	-	7.35	7.79	8.18	8.50
75	-	-	-	-	-	-	8.24	8.82	9.32

Mass flow in kg/h

35	55	80	146	190	242	304	376	460	556
40	50	74	139	182	234	295	366	449	544
45	45	68	132	175	225	286	356	438	532
50	-	62	125	167	217	276	345	426	519
55	-	-	117	158	208	266	334	414	506
60	-	-	-	150	198	256	323	402	493
65	-	-	-	-	-	245	312	389	479
75	-	-	-	-	-	-	288	363	451

Coefficient of performance (C.O.P.)

35	1.55	1.85	2.69	3.26	3.95	4.79	5.81	7.04	8.55
40	1.38	1.65	2.39	2.88	3.48	4.20	5.07	6.11	7.36
45	1.22	1.47	2.12	2.55	3.06	3.68	4.41	5.29	6.33
50	-	1.31	1.87	2.24	2.69	3.22	3.84	4.58	5.46
55	-	-	1.65	1.97	2.35	2.81	3.34	3.97	4.71
60	-	-	-	1.73	2.06	2.44	2.90	3.43	4.06
65	-	-	-	-	-	2.12	2.51	2.97	3.50
75	-	-	-	-	-	-	1.87	2.20	2.59

Nominal performance at to = 7.2 °C, tc = 54.4 °C

Cooling capacity	12 070	W
Power input	3 917	W
Current consumption	7.10	A
Mass flow	296	kg/h
C.O.P.	3.08	

Pressure switch settings

Maximum HP switch setting	20.2	bar(g)
Minimum LP switch setting	0.1	bar(g)
LP pump down setting	0.4	bar(g)

Sound power data

Sound power level	0	dB(A)
With acoustic hood	0	dB(A)

to: Evaporating temperature at dew point

tc: Condensing temperature at dew point

Rating conditions : Superheat = 11.1 K , Subcooling = 8.3 K

Tolerance according EN12900

Danfoss can accept no responsibility for possible errors in catalogues, brochures and other printed material. Danfoss reserves the right to alter its products without notice. This also applies to products already on order provided that such alternations can be made without subsequential changes being necessary in specifications already agreed. All trademarks in this material are property of the respective companies. Danfoss, the Danfoss logotype and Maneurop are trademarks of Danfoss A/S. All rights reserved.

**Performance data at 60 Hz, EN 12900 rating conditions**
**R407C**

Cond. temp. in °C (tc)	Evaporating temperature in °C (to)							
	-15	-10	-5	0	5	10	15	

**Cooling capacity in W**

35	7 260	9 715	12 611	16 000	19 940	24 487	29 695	-	-
40	6 687	9 044	11 807	15 031	18 773	23 086	28 027	-	-
45	6 081	8 326	10 943	13 989	17 518	21 585	26 246	-	-
50	-	7 576	10 035	12 889	16 192	19 999	24 366	-	-
55	-	-	9 097	11 745	14 809	18 343	22 401	-	-
60	-	-	-	10 572	13 383	16 629	20 366	-	-
65	-	-	-	9 382	11 926	14 872	18 272	-	-

**Power input in W**

35	3 396	3 737	4 031	4 294	4 543	4 792	5 057	-	-
40	3 541	3 951	4 303	4 614	4 899	5 173	5 453	-	-
45	3 644	4 136	4 560	4 931	5 266	5 579	5 887	-	-
50	-	4 283	4 791	5 237	5 634	6 000	6 349	-	-
55	-	-	4 987	5 520	5 994	6 424	6 828	-	-
60	-	-	-	5 771	6 335	6 844	7 316	-	-
65	-	-	-	5 982	6 648	7 249	7 802	-	-

**Current consumption in A**

35	5.85	6.15	6.41	6.63	6.83	7.03	7.24	-	-
40	6.02	6.43	6.78	7.09	7.37	7.64	7.92	-	-
45	6.13	6.65	7.11	7.52	7.89	8.24	8.58	-	-
50	-	6.82	7.39	7.90	8.37	8.81	9.24	-	-
55	-	-	7.62	8.25	8.82	9.36	9.87	-	-
60	-	-	-	8.55	9.24	9.88	10.49	-	-
65	-	-	-	8.80	9.61	10.37	11.09	-	-

**Mass flow in kg/h**

35	158	207	265	331	406	491	588	-	-
40	153	203	260	326	401	485	581	-	-
45	147	197	254	319	393	477	572	-	-
50	-	190	247	311	384	467	560	-	-
55	-	-	238	302	373	455	546	-	-
60	-	-	-	291	361	440	529	-	-
65	-	-	-	279	347	424	511	-	-

**Coefficient of performance (C.O.P.)**

35	2.14	2.60	3.13	3.73	4.39	5.11	5.87	-	-
40	1.89	2.29	2.74	3.26	3.83	4.46	5.14	-	-
45	1.67	2.01	2.40	2.84	3.33	3.87	4.46	-	-
50	-	1.77	2.09	2.46	2.87	3.33	3.84	-	-
55	-	-	1.82	2.13	2.47	2.86	3.28	-	-
60	-	-	-	1.83	2.11	2.43	2.78	-	-
65	-	-	-	1.57	1.79	2.05	2.34	-	-

**Nominal performance at to = 5 °C, tc = 50 °C**

Cooling capacity	16 192	W
Power input	5 634	W
Current consumption	8.37	A
Mass flow	384	kg/h
C.O.P.	2.87	

**Pressure switch settings**

Maximum HP switch setting	29.4	bar(g)
Minimum LP switch setting	1.4	bar(g)
LP pump down setting	1.7	bar(g)

**Sound power data**

Sound power level	86	dB(A)
With acoustic hood	80	dB(A)

to: Evaporating temperature at dew point

tc: Condensing temperature at dew point

Rating conditions : Superheat = 10 K , Subcooling = 0 K

Tolerance according EN12900

**Performance data at 60 Hz, ARI rating conditions**
**R407C**

Cond. temp. in °C (tc)	Evaporating temperature in °C (to)							
	-15	-10	-5	0	5	10	15	

**Cooling capacity in W**

35	7 814	10 444	13 541	17 161	21 364	26 207	31 749	-	-
40	7 237	9 774	12 744	16 203	20 212	24 827	30 108	-	-
45	6 623	9 054	11 883	15 168	18 969	23 343	28 349	-	-
50	-	8 299	10 974	14 072	17 651	21 770	26 487	-	-
55	-	-	10 033	12 930	16 275	20 125	24 540	-	-
60	-	-	-	11 759	14 855	18 423	22 522	-	-
65	-	-	-	10 573	13 407	16 679	20 449	-	-

**Power input in W**

35	3 396	3 737	4 031	4 294	4 543	4 792	5 057	-	-
40	3 541	3 951	4 303	4 614	4 899	5 173	5 453	-	-
45	3 644	4 136	4 560	4 931	5 266	5 579	5 887	-	-
50	-	4 283	4 791	5 237	5 634	6 000	6 349	-	-
55	-	-	4 987	5 520	5 994	6 424	6 828	-	-
60	-	-	-	5 771	6 335	6 844	7 316	-	-
65	-	-	-	5 982	6 648	7 249	7 802	-	-

**Current consumption in A**

35	5.85	6.15	6.41	6.63	6.83	7.03	7.24	-	-
40	6.02	6.43	6.78	7.09	7.37	7.64	7.92	-	-
45	6.13	6.65	7.11	7.52	7.89	8.24	8.58	-	-
50	-	6.82	7.39	7.90	8.37	8.81	9.24	-	-
55	-	-	7.62	8.25	8.82	9.36	9.87	-	-
60	-	-	-	8.55	9.24	9.88	10.49	-	-
65	-	-	-	8.80	9.61	10.37	11.09	-	-

**Mass flow in kg/h**

35	157	206	263	329	403	488	584	-	-
40	152	202	259	324	398	483	578	-	-
45	146	196	253	318	391	474	568	-	-
50	-	189	245	309	382	464	557	-	-
55	-	-	237	300	371	452	542	-	-
60	-	-	-	289	359	438	526	-	-
65	-	-	-	277	345	422	508	-	-

**Coefficient of performance (C.O.P.)**

35	2.30	2.80	3.36	4.00	4.70	5.47	6.28	-	-
40	2.04	2.47	2.96	3.51	4.13	4.80	5.52	-	-
45	1.82	2.19	2.61	3.08	3.60	4.18	4.82	-	-
50	-	1.94	2.29	2.69	3.13	3.63	4.17	-	-
55	-	-	2.01	2.34	2.72	3.13	3.59	-	-
60	-	-	-	2.04	2.34	2.69	3.08	-	-
65	-	-	-	1.77	2.02	2.30	2.62	-	-

**Nominal performance at to = 7.2 °C, tc = 54.4 °C**

Cooling capacity	18 085	W
Power input	6 141	W
Current consumption	9.01	A
Mass flow	407	kg/h
C.O.P.	2.94	

**Pressure switch settings**

Maximum HP switch setting	29.4	bar(g)
Minimum LP switch setting	1.4	bar(g)
LP pump down setting	1.7	bar(g)

**Sound power data**

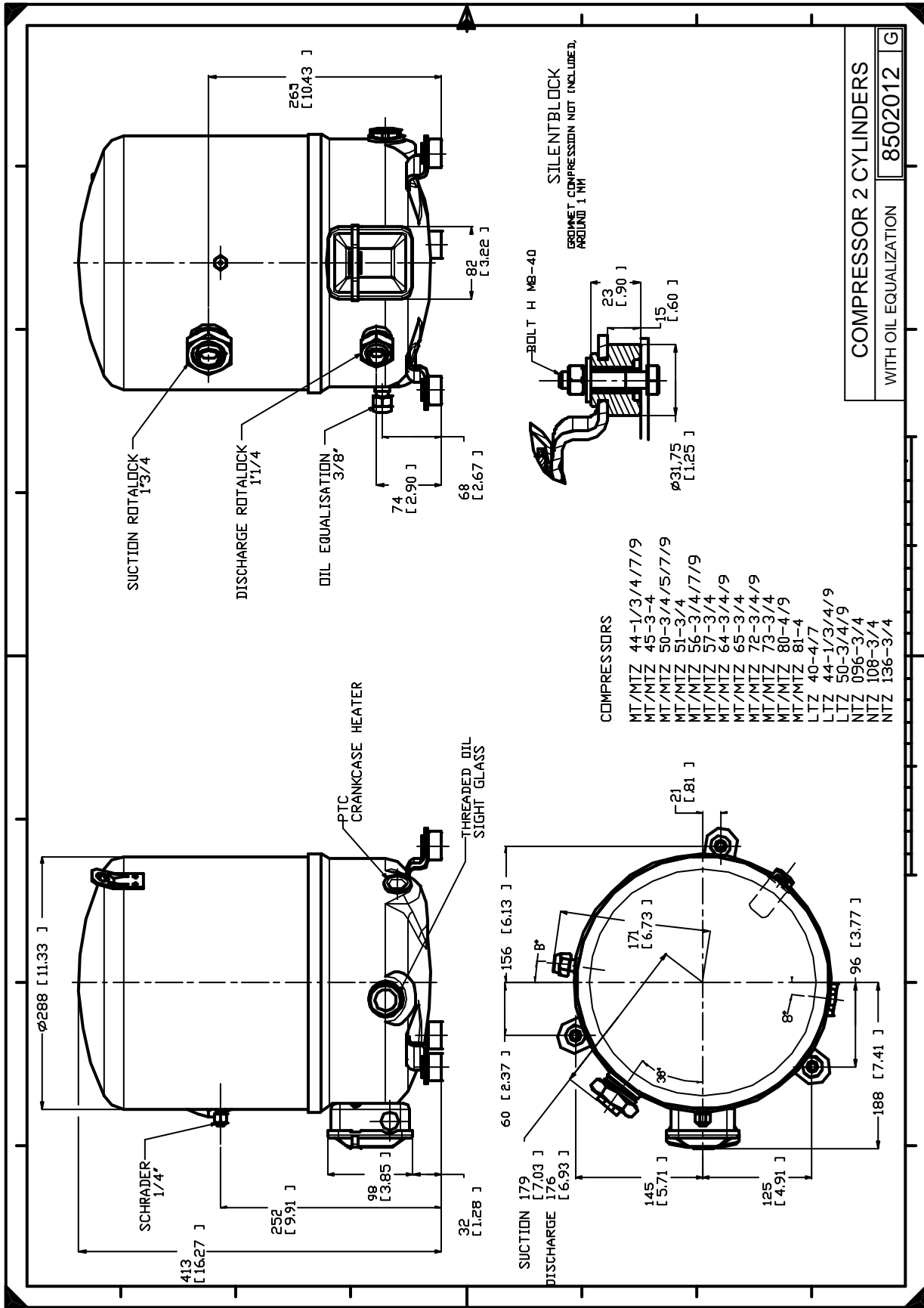
Sound power level	86	dB(A)
With acoustic hood	80	dB(A)

to: Evaporating temperature at dew point

tc: Condensing temperature at dew point

Rating conditions : Superheat = 11.1 K , Subcooling = 8.3 K

Tolerance according EN12900



Danfoss can accept no responsibility for possible errors in catalogues, brochures and other printed material. Danfoss reserves the right to alter its products without notice. This also applies to products already on order provided that such alternations can be made without consequential changes being necessary in specifications already agreed. All trademarks in this material are property of the respective companies. Danfoss, the Danfoss logotype and Maneurop are trademarks of Danfoss A/S. All rights reserved.