

# C2 Pro

Professional PoE Fingerprint & Card Terminal



C2 Pro is a high performance time and attendance terminal aimed to the middle and high-end market. Equipped with highly efficient Dual-Core 1GHz processor, C2 Pro sustains higher performance by finishing the comparison in less than 0.5 seconds. Friendly GUI and 3.5 inches TFT LCD make C2 Pro is easy to use. It support several RFID reader module (HID, ALLEGION or ANVIZ) and RS485, PoE-TCP/IP or WiFi communication for different requirements. Based on Linux operation system, C2 Pro offers SDK and EDK for further customization of the system. It also provides 1 relay for the ringbell and a connecting to the Access Control system. All the above to meet your requirements.



# BioNANO - The core algorithm

BioNANO is applied in all Anviz biometric-based products used for identification.



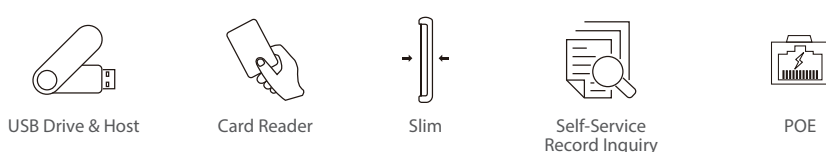
- Independent research and development
- Suitable for both wet and dry fingers
- Automatically restores the broken lines in fingerprint images
- Extraction of features in worn fingerprints
- Fingerprint template auto update

## Functional Parameter

Item	Specifications	
Platform	Linux	
Hardware	CPU	Dual-Core 1GHz Processor
	Memory	512M DDR3+2GB Flash
	LCD	3.5" TFT
	LED	Three-color indicator light
Registration and verification	Operating Temperature	-30°C to 60°C
	Humidity	10% to 90%
	Verification Mode	Fingerprint (1:N, 1:1), Password, Card
	Fingerprint capacity	10,000 (1:N)
	Logs	100,000
RFID	HID iClass Card	Optional
	Anviz	Standard 125KHz EM Optional 13.56MHz Mifare/ISO 14443A
Interface	WiFi	Yes
	TCP/IP	Yes
	RS485	Yes
	Relay	1 Relay
	USB	1 Host
	PoE	Standard IEEE802.3af
	Wiegand	Wiegand Output
Web Server	Yes	
Power	DC 12V 1A	
Dimensions	140(w) x 190(h) x 32(d) mm (5.51x7.48x1.26")	
Certificates	CE, FCC, RoHS	

## Features

- Linux platform to provide a safe and stable performance
- Comparison time in less than 0.5s
- Embedded fingerprint templates to the IC card to provide a more safety comparison on 1:1
- AFOS408 the latest fingerprint reader, touch on activation infrared, optical imaging technology
- PoE-TCP/IP, R3485 & WiFi are provided to satisfy different needs
- Provide 1 relay for bell and connecting to Access Control system
- New material that makes it more appealing and durable
- Ergonomic design with new rubber keypad to provide a better user experience
- Bigger and brighter 3.5 inch color display
- Fast & easy installation through a wall-mounted board
- Ease the experience of user by brand new UI design



# CrossChex

Time Attendance and Access Control Management System

CrossChex is an intelligent management system of time attendance and access control devices, which is applicable to all Anviz time attendances and access controls. The user-friendly and interactive design makes this system very easy to operate, the powerful function makes this system realize the management of department, staff, shift, payroll, access authority, and exports different time attendance and access control reports, satisfying different time attendance and access control requirements in different complicated environments.



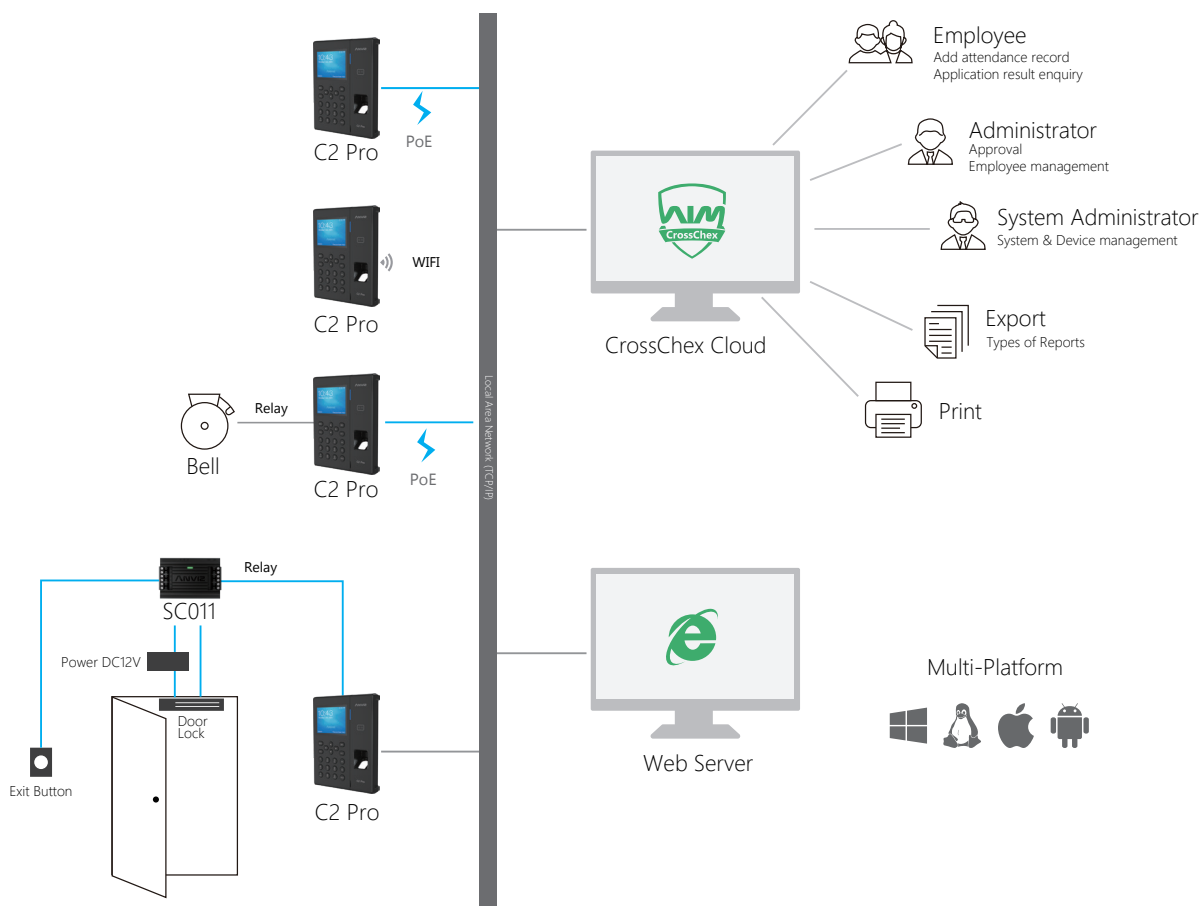
CrossChex Cloud

## Advantages

- No need to install, maintain, or upgrade software
- No expensive computers to purchase or maintain
- Access data in real-time from any PC and Mobile with Internet
- Receive real-time alerts to your email
- Multiple encryptions and redundancy backup for data safety.



Please scan this QR code to get CrossChex Cloud App





Please scan this QR code  
to win Anviz vCard

