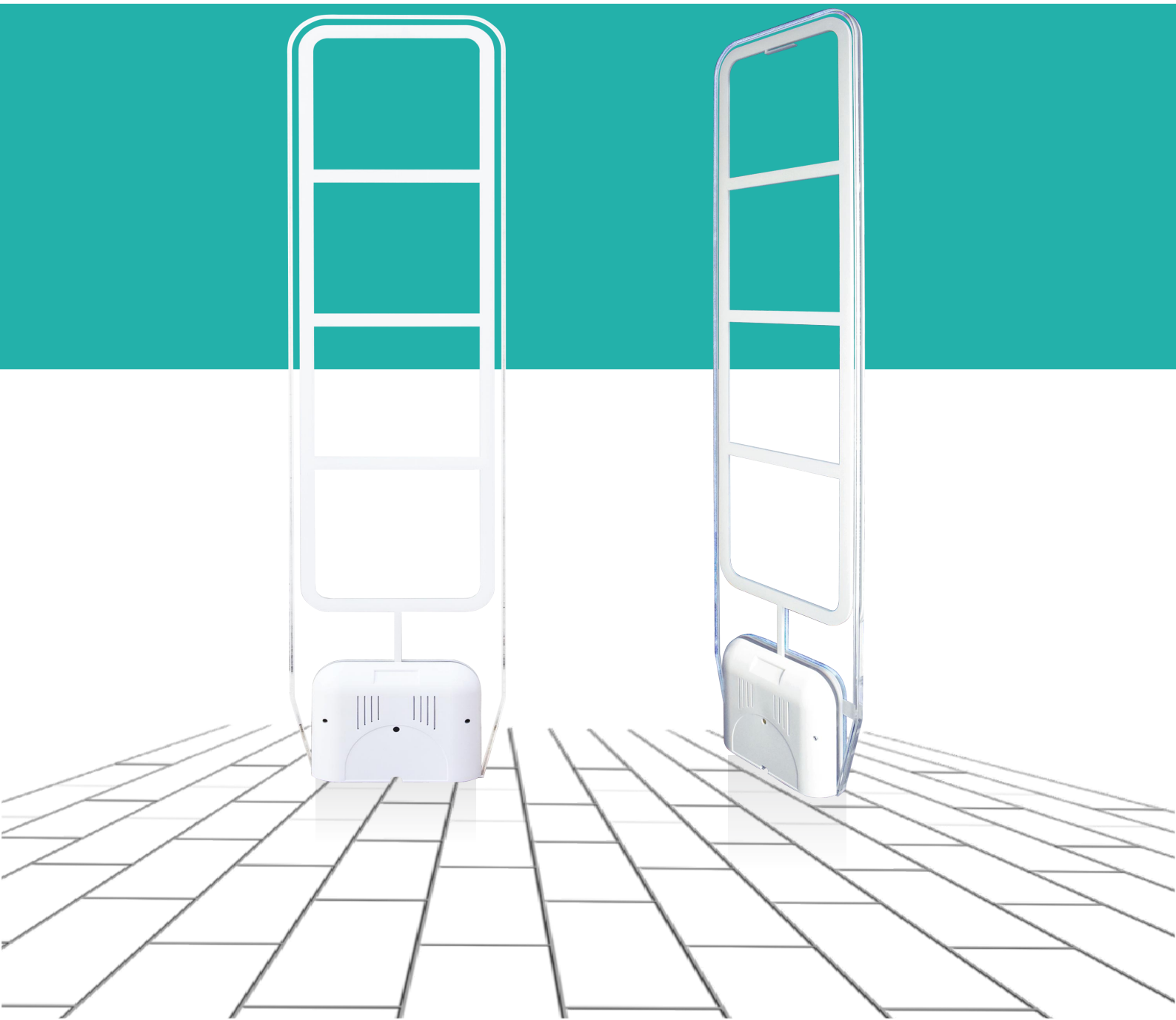


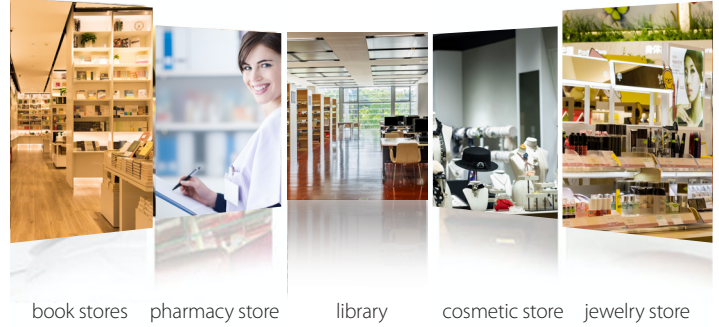
EM06

Electromagnetic (EM) Antenna

This EM EAS model is manufactured with high quality acrylic materials, it has a transparent open look, and modern feeling. It produces high level detection in all three label orientations and with accurate alarms. The system is designed for the protection of worldwide small and medium size of library, book stores, pharmacy store, cosmetic store, jewelry store etc.



APPLICATION STORES



book stores pharmacy store library cosmetic store jewelry store

OPTIONAL PARTS

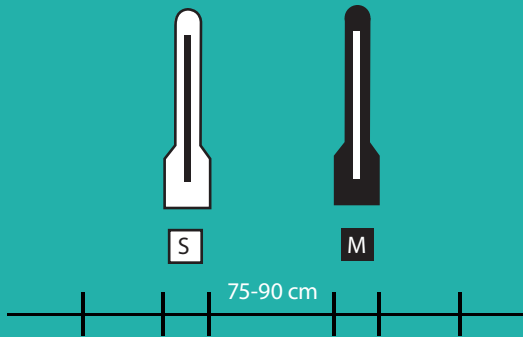


EM labels

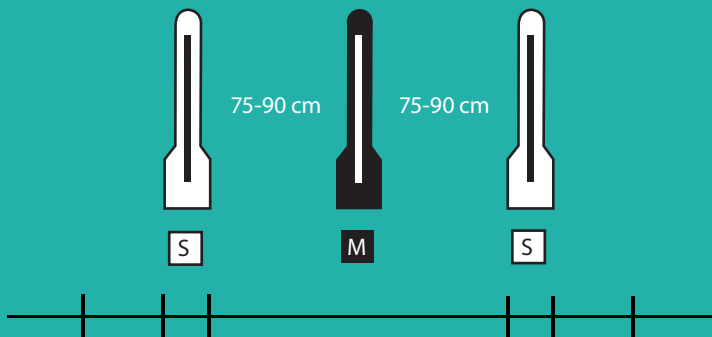


EM Label Reactivation and Deactivation

SYSTEM CONFIGURATIONS



One master system can connect with two antennas. The installation distance is up to 90cm between the antenna. The back plate for single MS is optional choice.



One master system can connect with two antennas. The installation distance is up to 90cm between each antenna. The back plate for Dual MSS is optional choice.

Note:

The power supply unit is used for single and dual aisle systems. Three antennas can be supplied by one PSU.

FEATURES

- Applied Digital Signal Processing (DSP) with high alarm rate
- Applied Digital Dynamic Phase Detection (DMPD) to make system work more stable
- Realized the linkage with the monitoring by the reserved signal input port
- Detects labels on metal
- Detects labels covered in aluminum foil
- Compatible with the worldwide different sizes of same frequency EM labels

SPECIFICATIONS

Model No	EM06
Material	Acrylic
Technology	Electromagnetic (EM)
Frequency	1.042KHz
Input Voltage	100V-240V; 50/60Hz
Output Voltage	Single Aisle 5V AC, Double Aisle 15V AC
Output Power	35W
Detection Range	Height 5-155cm, Width 75-90cmAverage Trouble-free Time ≥80000 hours
Alarm Way	Both Sound and light Alarm
Dimensions	150 (H) * 38 (L) * 25(W) cm
Package	158 (H)* 67 (L) *30 (W)cm
Weight	44kg (with back plate)

