

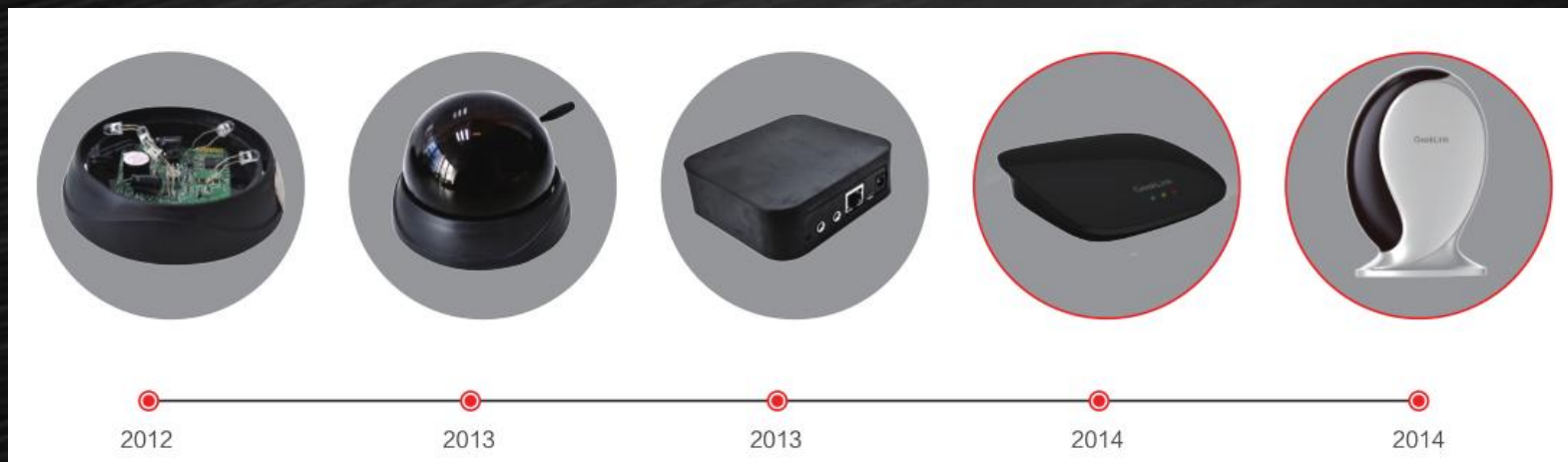
# Geeklink Smart Home System

Guangzhou Geeklink Technology Co.,Ltd

Geeklink © 2018 All Rights Reserved

## From 2012——

Geeklink has been devoted in Smart Home System since 2012, focused on R&D of smart home technology . As well know Rome wasn' t built in a day, our system also did not come with only one innovation idea. We have been upgraded Geeklink smart home system for several generations, which create Thinker, our best smart home system **for now** .



Smart Home is a new region and it has real need  
in the market  
But for now, it is not widely use Because——

**98%**  
**Manufacturer**



Do not have  
whole Set solution

1



Expensive ,  
High Cost

2



Not stable  
Poor user experience

3

All stop customers from enjoying the smart home



## **Geeklink Thinker and Thinker Mini provide the solution for the problems above**

Thinker is the center hub of the whole system. It connect sensors and control house


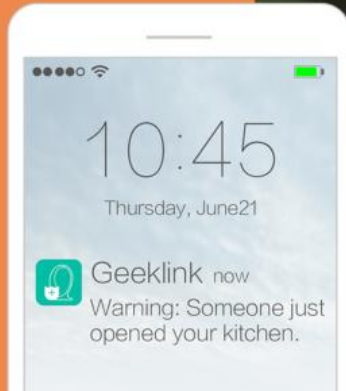
appliance, such as Door Sensor, Motion Sensor and home appliances like the air-conditioner, lights,

curtain, door locks, TV, sound box system.....



# A Grasp of the Smart Home **Security** function

Get instant alerts if there's unexpected entry or movement.



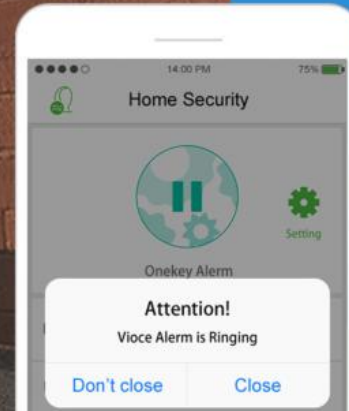
By placing a Geeklink Door Sensor on your doors or windows, or a Geeklink Motion sensor in your home, you can receive immediate alerts on your smartphone if someone is trying to enter.

# A Grasp of the Smart Home **Security** function



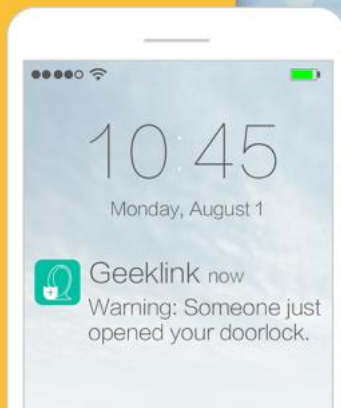
You can send would-be intruders running by adding a Geeklink Siren that will emit a loud, flashing siren if there's unwanted entry or movement in your home.

Trigger a loud, flashing siren to scare off any unwanted intruder.



# A Grasp of the Smart Home **Security** function

Lock and unlock your  
doors from anywhere.



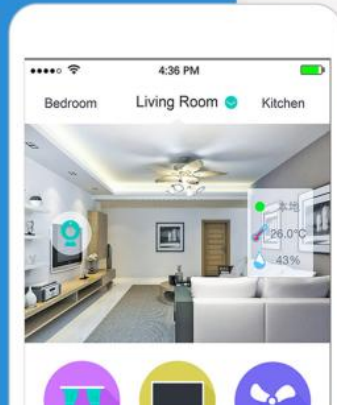
By adding a Geeklink-compatible lock, you can lock or unlock your door from anywhere. When your door is unlocked, you will receive instant message.

Geeklink



# A Grasp of the Smart Home **Monitoring** function

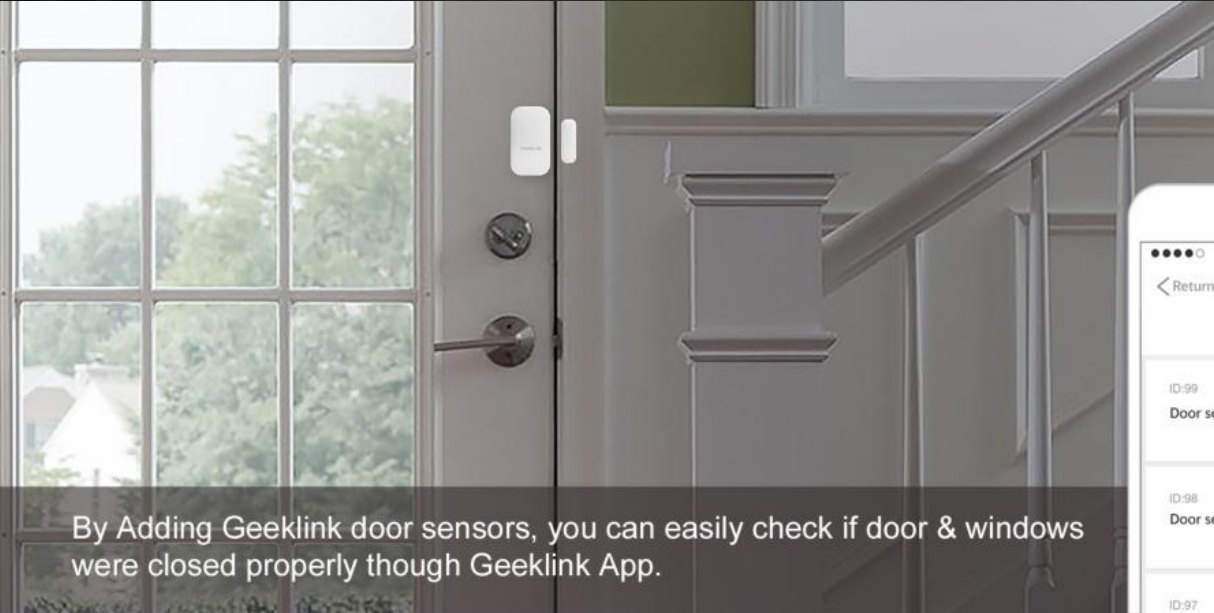
Stay connected to your home and family from anywhere.



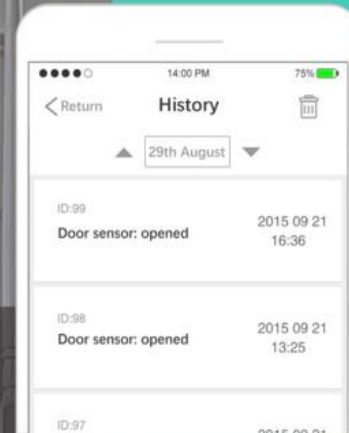
By adding Geeklink Camera, you can easily know what happened at home no matter where and when you are.

Geeklink

# A Grasp of the Smart Home **Monitoring** function



By Adding Geeklink door sensors, you can easily check if door & windows were closed properly though Geeklink App.



Easily know your  
door & windows  
Open/Close status.

# A Grasp of the Smart Home **Monitoring** function

Secure your house from  
Gas leakage.



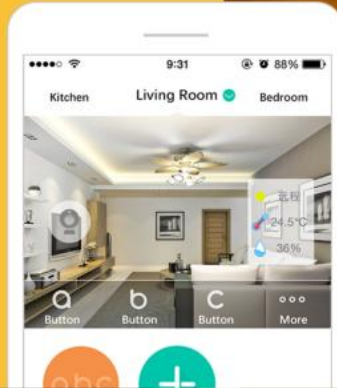
By adding Geeklink-compatible Gas Detector, you can get instant alerts if there's unexpected gas leakage.

Geeklink



# A Grasp of the Smart Home **Illumination and energy control** function

Lights control, automation and status monitoring system.



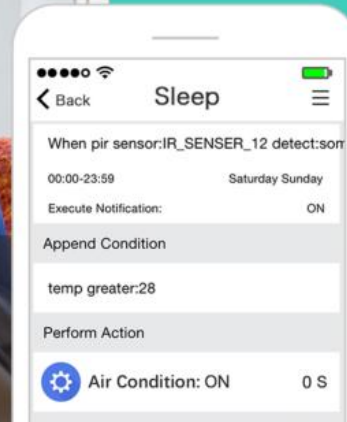
You can set lights to turn on and off automatically. When you are out for trip, you can set a lamp that makes people think you're home.



# A Grasp of the Smart Home **Illumination and energy control** function



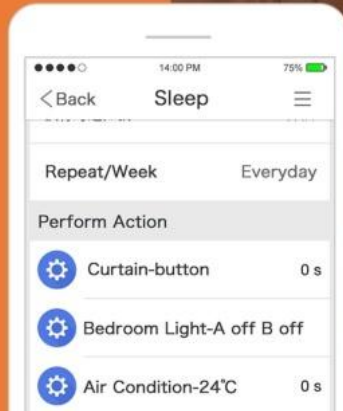
Control your house air-conditioner or heater, to keep the house in a comfortable temperature. Saving Energy by turn off the air-conditioner automatically when there is no one in the room.



House temperature control, automation, status monitor.

# A Grasp of the Smart Home **Illumination and energy control** function

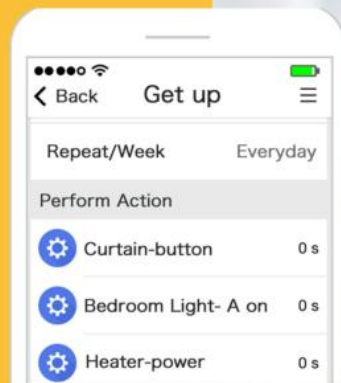
Control and automate multiple appliances with one button.



Start Routine by click one button in Geeklink app or the Scene Switch, for example, Sleeping Routine turn off all the house appliances and adjust air-conditioner to a comfortable temperature.

# A Grasp of the Smart Home **Automation** function

Start your wonderful day with a cup of hot coffee.



## Morning Routine:

6: 50 , start coffee machine automatically;

6: 55, open the Curtain automatically ,welcome the sunshine.

7: 00, start the favorite background music to wake you up.

What a wonderful beginning for a day.

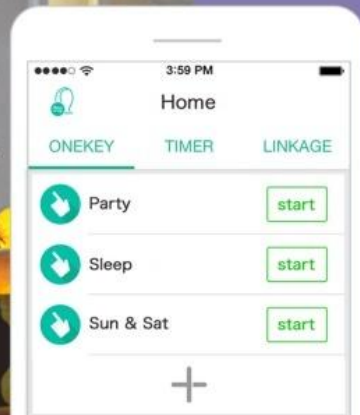


# A Grasp of the Smart Home **Automation** function



More easy and efficiency at party time.

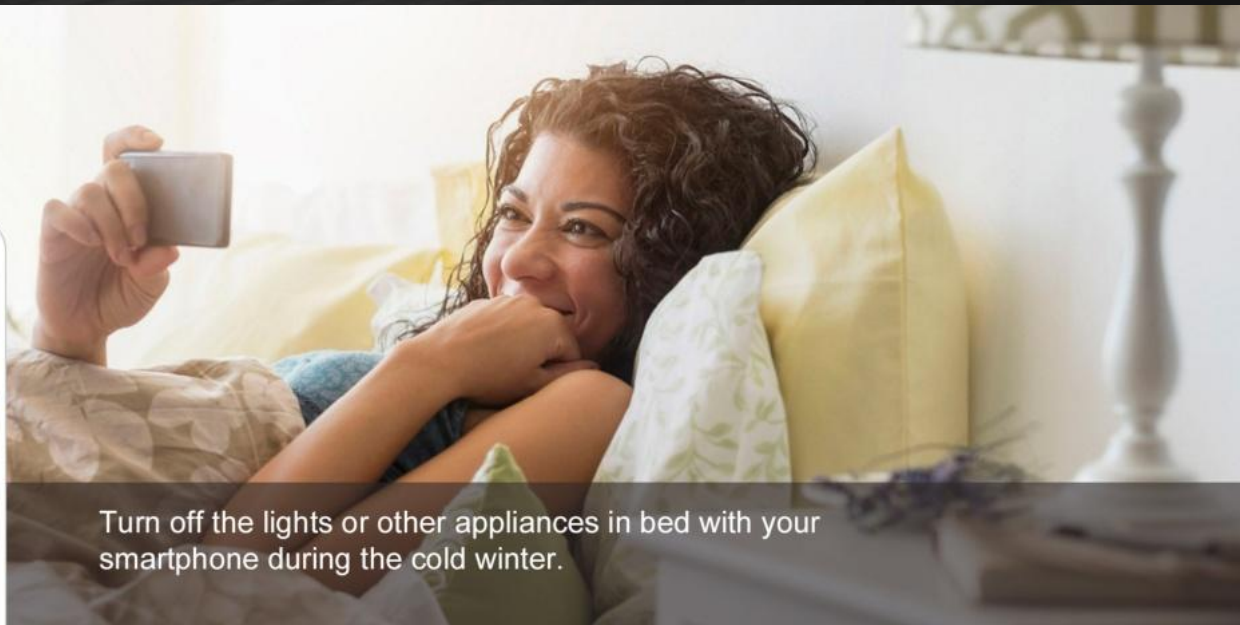
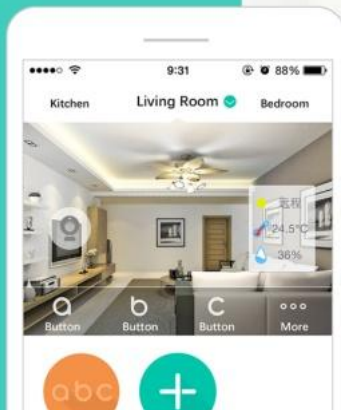
Adjust the light, play the music and rock your party with one button.





# A Grasp of the Smart Home **Automation** function

Make your life more convenient  
and harmonious.



Turn off the lights or other appliances in bed with your  
smartphone during the cold winter.

# Our Products —



RoHS

Thinker



Thinker mini



Extension



IP Camera



Motion Sensor



Siren



Feedback Curtain Motor



Door Sensor



Scene Switch



Scene Switch



Smart Remote



USFB2 Switch



FB2 switch



FB2 switch



FB2 switch



Remote Box 3S



GSM Module

## Products Brief

### 1.0 Gateway : Thinker

## The Center of Smart Home

Thinker is the first step of smart security and home automation. It is a senior translator which can connect various of appliance to work together. Thinker link the house appliance such as TV, Air-conditioner, curtain, lights, in the mean time, it can also link the security devices such as door sensor, PIR detector, gas detector and so on. With this link, you can monitor and control all these devices through Geeklink app all the time.



## Products Brief

### 1.0 : Thinker

It links the gas detector, door sensor, PIR Motion Sensor and other sensors. Control the aircond, lights, curtains, doors locks and other house appliances.



Thinker can compatible with hundreds of appliance. You can build your own smart home system.



## 1.0 Thinker

Technical information	
Supporting RC type	RF(315/433MHz ASK)&IRZ(26-64K Carrier wave)
Extension Function	Geeklink smart home and security devices, Geeklink Supported manufacturer devices, Third-party IR/RF control devices
Wifi Security	WPA-PSK/WPA2-PSK
Protocol Standard	IEEE802.11b/g/n.IEEE802.3/3u
Wifi Power	20dBm(Maximum)
Antenna Type	Built-in Omnidirectional Antenna
Network Manager	Phone App Management, WEB Page Management, Support Free Upgrade Online
Outer Network Link	PPPOE/Wireless Bridge/DHCP/Static State IP
Firmware Interface	One 100M self-adaption WAN interface,One 100M self-adaption LAN interface, One USB 2.0 interface
Support Security System Device	315M wireless alarming(1527/2262 encoding)
Support IR Code Library	Air-condition,TV,STB (Set Top Box)

## Products Brief

### • 1.0 Gateway : Thinker

## The Center of Smart Home

Thinker mini is simplified version of Thinker  
It support IR / RF remote control function  
Work with security sensor for home security  
And home automation



## 2.0 Thinker Mini

Product Name	Thinker Mini	Product Model	
Network Way	WIFI		
Network Standard	IEEE802.11b/g/n		
Supporting Security Devices	Geeklink Security Accessories (Door Sensor,PIR motion sensor) 315 wireless siren(1527/2262 coding)		
Supporting RC type	RF(315/433MHz ASK)&IR(26K-64K Carrier wave)		
Supporting IR Code Library	Air-conditioner,TV,STB...		
Extension Function	Geeklink smart home and security devices,Geeklink supported manufacturer devices,Third-party IR/RF control devices		
Power Supply	DC5V/1A	Working Temperature	
Working Humidity	10%-90%RH(non-condensing)	Product Size(cm)	
Mobile App	Android 4.3 or iSO 7.0 or higher		

# Compare of Thinker and Thinker mini

Compare Thinker and Thinker mini 思想者和思想者Mini对比

	Thinker 思想者	Thinker mini
app 软件	Geeklink 极联app	Geeklink 极联app
connect to wifi 通过wifi联网	Yes 支持	Yes 支持
Connect to LAN cable 通过网线联网	Yes 支持	No 不支持
IR control 控制红外家电	Yes 支持	Yes 支持
RF 433 and 315 控制433和315家电	Yes 支持	Yes 支持
support IR extension 支持分机GR-1	Yes 支持	No 不支持
Support sensor (ie. Motion sensor) 支持比如人体或者门磁之类的感应器	Yes 支持	Yes 支持
安防	Yes 支持	Yes 支持
Amazon Echo Voice control Echo 语音控制	Yes 支持	Yes 支持
Can set how many scenes 情景设置个数	100个	50个
built in 100db Siren 内置100分贝声音报警器	No 不支持	Yes 支持
Support Third party sensor 支持第三方的感应器	Yes 支持	Yes 支持



## Products Brief

### 1.1 GSM Module

It works with Thinker gateway for phone call and sms alarm even when no internet available.



No need  
network



Phone call  
alarm



SMS alarm

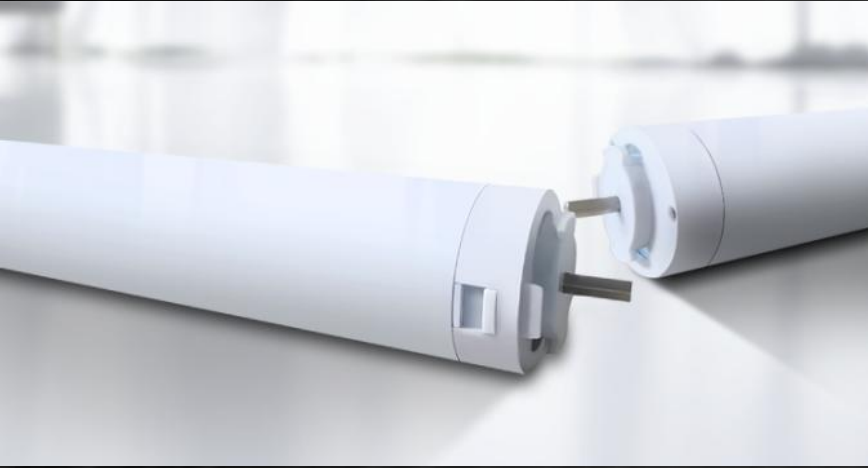


## GSM module

Make Phone call or send SMS when there is alarm in your house.

## Products Brief

### 1.2 Feedback Curtain Motor



## Feedback Curtain Motor

Real Time status feedback curtain motor.  
You can choose how many percentage you want to  
open/close your curtain

## Products Brief

### 1.3 Door Sensor



## Door Sensor

Real Time feedback:

- Door and Windows are "Close" or "Open"
- Power Status feedback

With Linkage function, when the door open/close, the Thinker will automatically turn on/off the lights.

## Products Brief

### 1.4 IR/RF sensor extension



## Extension

IR and RF signal repeater

Built-in humidity and temperature sensor real-time feedback status to app.

Enable Thinker to control the air-conditioner and TV of different rooms.

With Linkage function, you can control the room temperature and humidity in a specific range.



## Products Brief

### 1.5 Scene Switch



## Scene Switch

One button control multiple house appliances.  
Even the old and kids can easily handle smart home  
One button launch leave home mode and Arm your house.

One button control multiple house appliances.

## Products Brief

### 1.6 Feedback Switch

#### Live Line、Zero Line Touch Feedback Switch

On/off status feedback

86\*86mm size

Fireproof PC, eliminate hidden danger

Two Power line interface, available the problem for project wiring when it need many cables to fit in power interface.

No need to change your old illumination devices, you can directly replace the old switch to realize smart control.



Item	Name	Max Watt /gang
FB2-1	zero line	1500watt /gang
FB2-2	zero line	750Watt /gang
FB2-3	zero line	500Watt /gang
FB2-L1	live line	1000watt/gang
FB2-L2	live line	750Watt /gang
FB2-L3	live line	500Watt /gang

Live line do not need capacitor

## Products Brief

### 1.7 USA Standard Feedback Switch

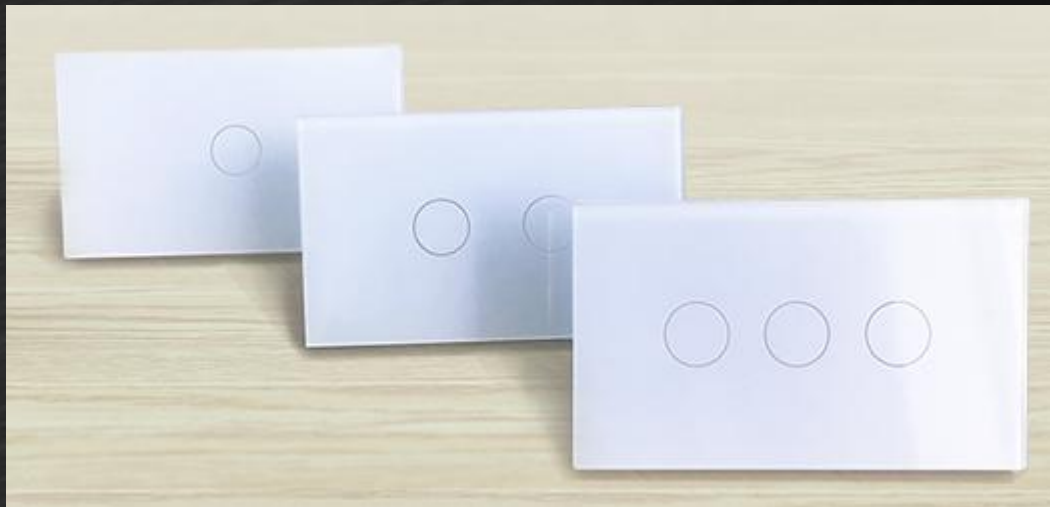
Live Line/Zero Line self-adaptable Touch Feedback Switch

On/off status feedback

118\*72mm size

Fireproof PC, eliminate hidden danger

No need to change your old illumination devices, you can directly replace the old switch to realize smart control.



live line wiring

USFB2-1 1000Watt/gang

USFB2-2 750Watt/gang

USFB2-3 500Watt/gang

zero line wiring

USFB2-1 1500Watt/gang

USFB2-2 1000Watt/gang

USFB2-3 750Watt/gang

## Products Brief

### 1.8 IP Camera



## Geeklink IP Camera

HD IP Camera

1080P

P2P

App control

Indoor WIFI ip camera

Compatible with onvif 2.1



## Products Brief

### 1.9 PIR Motion Sensor

Geeklink PIR Motion Sensor 2.0



Detect range  
Horizontal 120°



Vertical 120°

120 degree , wide detect range,  
Cover more area and monitor better.

## PIR Motion Sensor

Real Time monitor the motion in the house.

Communicate Distance: Indoor > 30m

Battery Duration: Standard environment 2 years

Detect range: Horizontal 120° Vertical 120° < 7 meter

Product feature: Online/Offline Feedback;

Someone/no one Feedback; Lower Battery Warning

## Products Brief

### 1. 10Sound Light Siren



## Sound Light Siren

Geeklink Sound and Light Siren:RF433Mhz

220V

85 dB

volume change available

ringtones chosable

work with Geeklink Thinker in GFSK

## Products Brief

### 1.11 Smart Remote



Smart controller

## Smart controller

Set the alarm system by Geeklink intelligent remote control device on the arm, button, can quickly set the host, the host to disarm.

## Smart Remote

Geeklink Smart Remote:RF433Mhz

Battery Power

Arm/Disarm

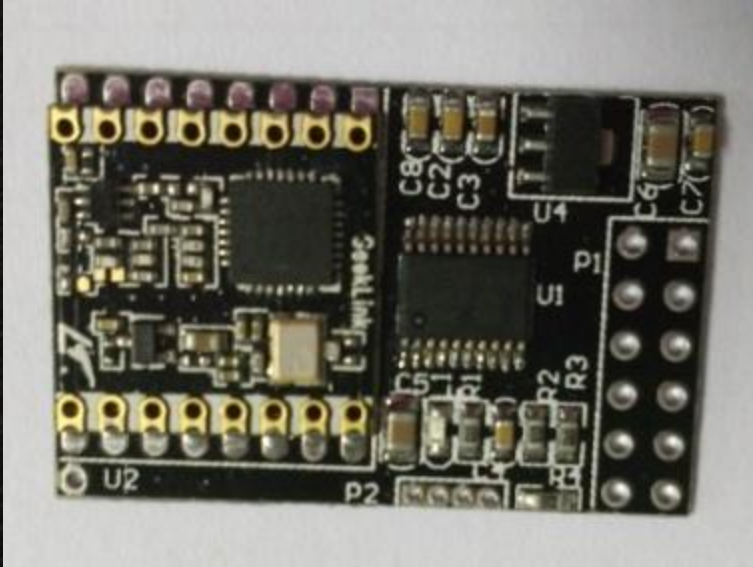
One key scene button

SOS button

work with Geeklink Thinker in GFSK

## Products for developer

### 1.12 IO Module

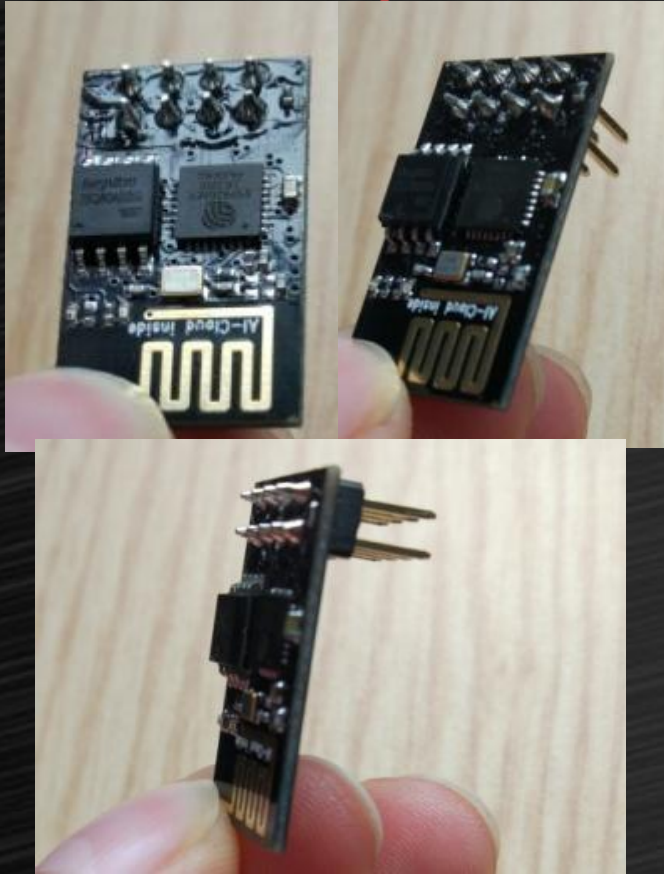


1-4 gang modify as you like.  
App status feedback  
With this module, normal house  
appliance can have on/off  
feedback



## Products for developer

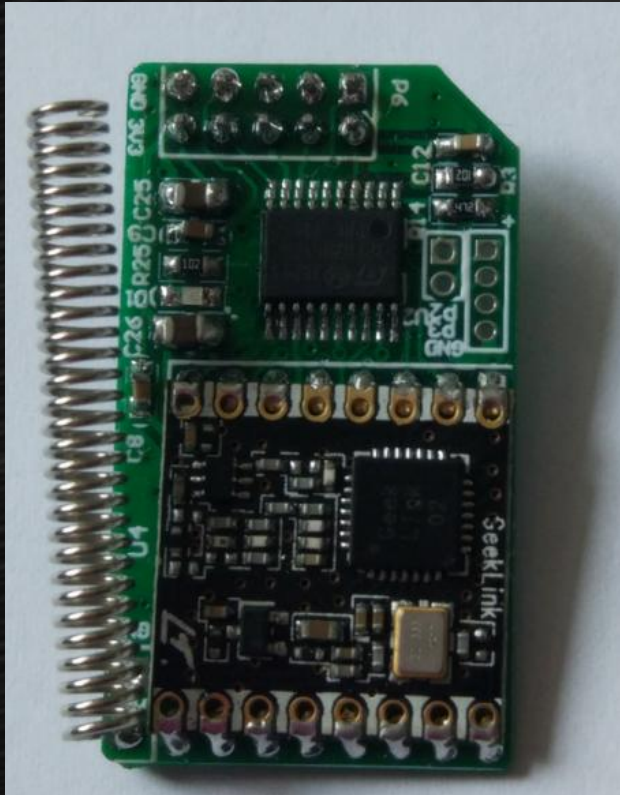
### 1.13 Wifi Module



1 gang wifi module  
App status feedback  
Don' t need to work with Thinker.  
With this module, you can directly  
control the on/off , and timer  
from the app.

## Products for developer

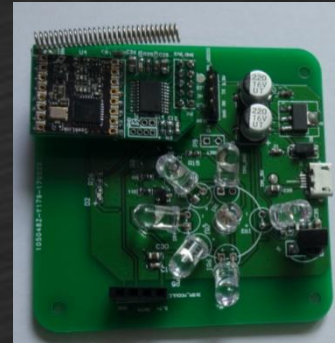
### 1.14 RF and IR Control and study module



- Learning and sending RF signal 315mhz/433mhz

- Learning and sending IR signal.

Also provide PCB plan so that you can develop your own gateway faster



# Why Choose Geeklink?

Geeklink manufacture  
our own smart system,  
which Including both  
products and app.

Manufacturer

Own R&D department

Geeklink develop our  
products, and have  
mould to make our  
unique design

Provide OEM services  
which enable you to  
marketing your own  
brand

OEM Service

ODM Service

Geeklink have our own  
engineers team which  
enable us to develop  
products and thus  
accept ODM

Training and material  
provided which help  
your marketing, after  
sales and warranty  
policy provide you  
support when you  
need

After sales and warranty





Geeklink products have CE certification which assure you about our products standard.



Geeklink also holds patents in smart home area, which enable us to be in the sharp end of the this area. Our technical team keeps working on making the products to enrich our products line, and to complete our system.



Thank You

Naga Saputra

WA/Phone: 08170717454

Website: [www.ato.co.id](http://www.ato.co.id)

Email: [nagasaputra@ato.co.id](mailto:nagasaputra@ato.co.id)