

PHP

Pressure Transmitter for Precision Measurements

The PHP digital pressure transducer is a high accuracy and performance for precision pressure measurement component that uses either RS-232 to communicate with host computer and analog output. The PHP have a excellent small temperature error below 0.025% in the range of -10 ~ 50 °C. The communication S/W is included in delivery.



Features

- ▶ VDC, mA Analog output
- ▶ RS232 Digital output
- ▶ Measuring range 0 ~ 150MPa
- ▶ 0.035%FS accuracy
- ▶ Gauge and absolute measurement
- ▶ Stainless steel media-wetted materials

Applications

- ▶ Measurement and test benches
- ▶ Calibration technology
- ▶ Laboratories
- ▶ Plant construction and machine building

Specifications

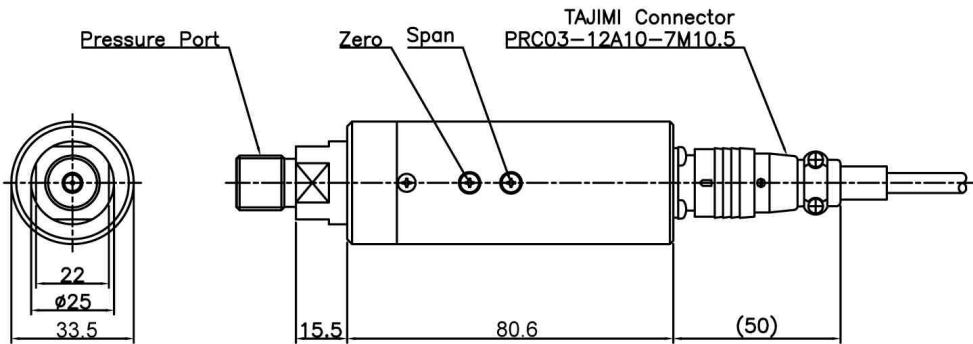
Range	Gauge Pressure	0 ~ 15, 35, 100, 200, 350, 700 kPa 0 ~ 2, 3.5, 7, 10, 20, 25, 35, 40, 60, 100, 150 MPa
	Absolute Pressure	0 ~ 100, 200, 350, 700 kPa / 0 ~ 2, 3.5, 7 MPa
	Compound Pressure	-100 ~ 100, 200, 350, 700 kPa / -0.1 ~ 2, 3.5 MPa
Performance	Accuracy	±0.035% FS (Gauge pressure) ±0.05% FS (Compound, Absolute pressure)
	Thermal Effect on Zero	±0.035% FS
	Thermal Effect on Span	±0.035% FS
	Long-term Stability	±0.05% FS/year
	Compensated Temp. Range	-10 ~ 50 °C
	Operating Temp. Range	-20 ~ 80 °C
Electrical	Excitation	11 ~ 32VDC
	Analog Output	0 ~ 5VDC, 1 ~ 5VDC, 0 ~ 10VDC, 4 ~ 20mA (3, 4 wire)
	Digital Output	RS232 (19200, 8, n, 1)
	Electrical Connection	TAJIMI PRC03-21A10-7F / PRC03-12A10-7M10.5 + 3m cable
Physical	Proof Pressure	≤100MPa : 150%FS Max. / >100MPa : 110%FS Max.
	Burst Pressure	≤100MPa : 200%FS Min. / >100MPa : 110%FS Min.
	Vibration	49.1m/s ² {5G}, 10~500Hz
	Shock	490m/s ² {50G}
	Pressure port	R(PT)1/8", G(PF)1/8", R(PT)1/4", G(PF)1/4", R(PT)3/8", G(PF)3/8", (NPT)1/4"
	Media-Wetted Materials	Stainless Steel 316L, Viton (>35MPa : Stainless Steel 303, Titanium 87% Alloy)
	Weight	Connector type : Approx. 270g (Sensor Only)

PHP

Pressure Transmitter for Precision Measurements

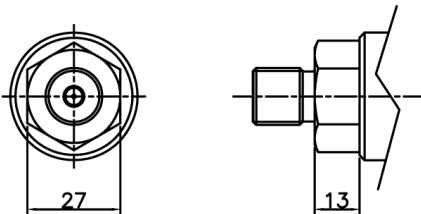
DIMENSIONS

▶ ≤ 3.5MPa



Pin No.	Wire Color	Connections
A	White	GND
B	Red	Excitation ⊕
C	Shield	FG
D	Green	Analog Output ⊕
E	Yellow	TXD
F	Black	GND
G	Blue	RXD

▶ > 3.5MPa



Order Information

Model Name	PHP C 0100 R D T G-P	Type of Pressure Measurement
		G : Gauge J : Absolute C : Compound
Output		Connecting Methods
C : 0~5V, RS232 E : 1~5V, RS232 J : 0~10V, RS232 G : 4~20mA(3Wire), RS232		T : TAJIMI PRC03-21A10-7F
Pressure Range		Pressure port
XXXX : Pressure		A : R(PT)3/8" D : G(PF)1/4" B : G(PF)3/8" G : R(PT)1/8" C : R(PT)1/4" H : G(PF)1/8" L : (NPT)1/4"
		Pressure Unit
		R : kPa M : MPa B : bar K : kgf/cm ² P : psi H : mmHg I : inchHg T : Torr D : mmH ₂ O C : cmH ₂ O N : inchH ₂ O

PDK CO., LTD



CV KALINDRA MITRA NIAGA

Phone : 021-5541468
 HP : 0816-110-5088
 Email : suhadi@kalindramini.com
 Website : www.kalindramini.com