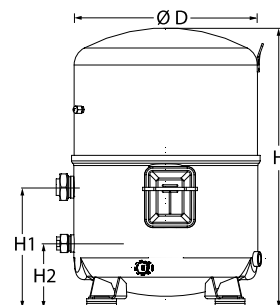
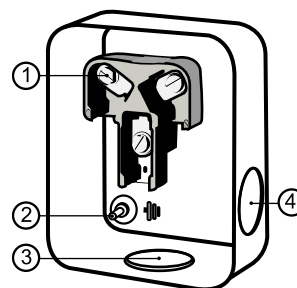


General Characteristics

Model number (on compressor nameplate)		MTZ160HW4
Code number for Industrial pack**		MTZ160-4M
Drawing number		8504014e
Suction and discharge connections		Rotolock
Suction connection		1-3/4 " Rotolock
Discharge connection		1-1/4 " Rotolock
Suction connection with supplied sleeve		1-1/8 " ODF
Discharge connection with supplied sleeve		3/4 " ODF
Oil sight glass		Brazed
Oil equalization connection		None
Oil drain connection		None
LP gauge port		Schrader
IPR valve		435 psi / 115 psi
Cylinders	4	
Swept volume	16.57 in ³ /rev	
Displacement @ Nominal speed	1669 cfh @ 2900 rpm - 2014 cfh @ 3500 rpm	
Net weight	152 lbs	
Oil charge	132 oz, POE - 160PZ	
Maximum system test pressure Low Side / High side	363 psi / 435 psi	
Maximum differential test pressure	435 psi	
Maximum number of starts per hour	12	
Refrigerant charge limit	22 lbs	
Approved refrigerants	R404A, R507A, R134a, R407C	

Dimensions


D=13.9 inch, H=21.3 inch,
H1=9.2 inch, H2=4.9 inch

Terminal box


IP54 (with cable gland)

- 1: Screw connectors 10-32 UNF x 9.5
- 2: Earth M4-12
- 3: Knock-out Ø 29 mm (1.14")
- 4: Knock-out Ø 25.5 mm (1.00")

Electrical Characteristics

Nominal voltage	380-400V/3/50Hz - 460V/3/60Hz
Voltage range	340-440 V @ 50Hz - 414-506 V @ 60Hz
Winding resistance (between phases) +/- 7% at 77°F	1.1 #
Maximum Continuous Current (MCC)	36 A
Locked Rotor Amps (LRA)	140 A
Motor protection	Internal overload protector

Recommended Installation torques

Oil sight glass	0 ft.lbs
Power connections / Earth connection	2 ft.lbs / 1 ft.lbs
Mounting bolts	37 ft.lbs

Parts shipped with compressor

Mounting kit with grommets, bolts, nuts, sleeves and washers
Initial oil charge
Installation instructions

Approvals : CE certified, UL certified (file SA6873), -

*Singlepack: Compressor in cardboard box

**Industrial pack: 6 Unboxed compressors on pallet (order per multiples of 6)

Datasheet, performance data
Maneurop reciprocating compressor. MTZ160-4
Performance data at 50 Hz, ARI rating conditions
R407C

Cond. temp. in °F (tc)	Evaporating temperature in °F (to)								
	10	20	25	30	35	40	45	50	55

Cooling capacity in Btu/h

100	69 108	90 987	103 570	117 348	132 397	148 790	166 604	185 911	206 815
110	62 907	83 454	95 241	108 136	122 216	137 555	154 228	172 311	191 904
120	-	75 829	86 814	98 820	111 925	126 204	141 732	158 585	176 862
130	-	68 131	78 308	89 421	101 547	114 761	129 139	144 759	161 717
140	-	-	69 746	79 963	91 106	103 253	116 481	130 866	146 504
150	-	-	-	-	80 642	91 725	103 804	116 958	131 282

Power input in W

100	8 274	9 094	9 476	9 844	10 202	10 554	10 904	11 255	11 611
110	8 671	9 645	10 097	10 530	10 948	11 354	11 753	12 148	12 543
120	-	10 133	10 669	11 182	11 675	12 151	12 614	13 069	13 519
130	-	10 537	11 174	11 782	12 364	12 925	13 468	13 998	14 517
140	-	-	11 591	12 309	12 996	13 657	14 296	14 915	15 519
150	-	-	-	-	13 552	14 328	15 077	15 801	16 505

Current consumption in A

100	14.67	15.76	16.28	16.78	17.25	17.68	18.08	18.44	18.75
110	15.13	16.39	17.00	17.60	18.17	18.70	19.21	19.68	20.10
120	-	16.99	17.71	18.41	19.09	19.74	20.36	20.95	21.50
130	-	17.53	18.36	19.18	19.98	20.76	21.51	22.23	22.92
140	-	-	18.92	19.87	20.81	21.73	22.63	23.49	24.32
150	-	-	-	-	21.55	22.62	23.67	24.70	25.69

Mass flow in lbs/h

100	909	1 176	1 327	1 491	1 669	1 860	2 067	2 289	2 529
110	871	1 134	1 283	1 444	1 618	1 806	2 009	2 227	2 461
120	-	1 089	1 234	1 392	1 563	1 747	1 946	2 159	2 389
130	-	1 038	1 181	1 336	1 503	1 684	1 878	2 086	2 311
140	-	-	1 124	1 275	1 439	1 615	1 804	2 008	2 228
150	-	-	-	-	1 368	1 540	1 725	1 924	2 138

Energy Efficiency Ratio (E.E.R.)

100	8.35	10.00	10.93	11.92	12.98	14.10	15.28	16.52	17.81
110	7.25	8.65	9.43	10.27	11.16	12.11	13.12	14.18	15.30
120	-	7.48	8.14	8.84	9.59	10.39	11.24	12.13	13.08
130	-	6.47	7.01	7.59	8.21	8.88	9.59	10.34	11.14
140	-	-	6.02	6.50	7.01	7.56	8.15	8.77	9.44
150	-	-	-	-	5.95	6.40	6.89	7.40	7.95

Nominal performance at to = 45 °F, tc = 130 °F

Cooling capacity	129 139	Btu/h	Current consumption	21.51	A
Power input	13 468	W	Mass flow	1 878	lbs/h
E.E.R.	9.59				

Pressure switch settings

Maximum HP switch setting	426	psi(g)
Minimum LP switch setting	3	psi(g)
LP pump down setting	19	psi(g)

T 0 : Evaporating temperature at dew point

T C : Condensing temperature at dew point

Rating conditions : Superheat = 20 °F , Subcooling = 15 °F

All performance data +/- 5%

Sound power data

Sound power level	0	dB(A)
With acoustic hood	0	dB(A)

Datasheet, performance data
Maneurop reciprocating compressor. MTZ160-4
Performance data at 50 Hz, ARI rating conditions
R134a

Cond. temp. in °F (tc)	Evaporating temperature in °F (to)								
	10	20	30	40	45	50	55	60	65

Cooling capacity in Btu/h

100	43 940	59 230	77 973	100 621	113 551	127 626	142 904	159 441	177 292
110	39 941	54 300	71 912	93 227	105 414	118 697	133 132	148 775	165 683
120	36 127	49 426	65 774	85 625	97 005	109 431	122 957	137 642	153 541
130	32 468	44 575	59 530	77 786	88 294	99 795	112 348	126 009	140 834
140	-	39 717	53 148	69 679	79 248	89 761	101 275	113 846	127 531
150	-	-	-	61 271	69 836	79 295	89 705	101 121	113 601
160	-	-	-	-	-	68 368	77 608	87 805	99 014

Power input in W

100	5 307	5 928	6 534	7 109	7 379	7 635	7 875	8 096	8 297
110	5 509	6 174	6 834	7 473	7 779	8 073	8 354	8 618	8 864
120	5 689	6 405	7 126	7 835	8 180	8 516	8 839	9 150	9 444
130	5 846	6 619	7 408	8 194	8 581	8 960	9 331	9 691	10 037
140	-	6 817	7 678	8 547	8 979	9 407	9 827	10 239	10 640
150	-	-	-	8 895	9 375	9 853	10 327	10 795	11 254
160	-	-	-	-	-	10 299	10 829	11 355	11 875

Current consumption in A

100	10.82	11.49	12.16	12.84	13.18	13.51	13.84	14.16	14.47
110	11.02	11.75	12.51	13.28	13.66	14.05	14.44	14.82	15.19
120	11.20	12.01	12.85	13.72	14.17	14.61	15.06	15.51	15.95
130	11.37	12.26	13.20	14.18	14.68	15.19	15.71	16.23	16.75
140	-	12.50	13.54	14.64	15.21	15.79	16.38	16.97	17.57
150	-	-	-	15.12	15.76	16.41	17.07	17.75	18.43
160	-	-	-	-	-	17.05	17.79	18.55	19.32

Mass flow in lbs/h

100	641	844	1 087	1 373	1 534	1 707	1 894	2 094	2 309
110	613	814	1 053	1 336	1 494	1 666	1 850	2 047	2 259
120	585	782	1 016	1 292	1 448	1 616	1 796	1 990	2 198
130	559	748	975	1 243	1 394	1 557	1 733	1 922	2 125
140	-	714	931	1 188	1 334	1 491	1 661	1 844	2 041
150	-	-	-	1 128	1 267	1 417	1 580	1 756	1 946
160	-	-	-	-	-	1 336	1 491	1 659	1 839

Energy Efficiency Ratio (E.E.R.)

100	8.28	9.99	11.93	14.15	15.39	16.71	18.15	19.69	21.37
110	7.25	8.80	10.52	12.47	13.55	14.70	15.94	17.26	18.69
120	6.35	7.72	9.23	10.93	11.86	12.85	13.91	15.04	16.26
130	5.55	6.73	8.04	9.49	10.29	11.14	12.04	13.00	14.03
140	-	5.83	6.92	8.15	8.83	9.54	10.31	11.12	11.99
150	-	-	-	6.89	7.45	8.05	8.69	9.37	10.09
160	-	-	-	-	-	6.64	7.17	7.73	8.34

Nominal performance at to = 45 °F, tc = 130 °F

Cooling capacity	88 294	Btu/h	Current consumption	14.68	A
Power input	8 581	W	Mass flow	1 394	lbs/h
E.E.R.	10.29				

Pressure switch settings

Maximum HP switch setting	328	psi(g)
Minimum LP switch setting	3	psi(g)
LP pump down setting	7	psi(g)

T 0 : Evaporating temperature at dew point

T C : Condensing temperature at dew point

Rating conditions : Superheat = 20 °F , Subcooling = 15 °F

All performance data +/- 5%

Sound power data

Sound power level	0	dB(A)
With acoustic hood	0	dB(A)

Danfoss can accept no responsibility for possible errors in catalogues, brochures and other printed material. Danfoss reserves the right to alter its products without notice.
This also applies to products already on order provided that such alternations can be made without subsequential changes being necessary in specifications already agreed.
All trademarks in this material are property of the respective companies. Danfoss, the Danfoss logotype and Maneurop are trademarks of Danfoss A/S. All rights reserved.

Datasheet, performance data
Maneurop reciprocating compressor. MTZ160-4
Performance data at 50 Hz, ARI rating conditions
R404A

Cond. temp. in °F (tc)	Evaporating temperature in °F (to)								
	-20	-10	0	10	20	30	40	45	50

Cooling capacity in Btu/h

90	33 372	46 367	62 454	82 072	105 654	133 638	166 456	184 813	204 540
100	28 895	40 806	55 523	73 484	95 124	120 879	151 184	168 177	186 470
110	24 607	35 388	48 689	64 946	84 596	108 076	135 821	151 428	168 263
120	20 493	30 098	41 934	56 441	74 055	95 214	120 351	134 549	149 903
130	-	24 918	35 244	47 954	63 485	82 276	104 761	117 525	131 376
140	-	19 834	28 604	39 470	52 872	69 248	89 035	100 344	112 670

Power input in W

90	6 929	7 885	8 767	9 591	10 374	11 133	11 885	12 263	12 645
100	7 027	8 112	9 124	10 079	10 995	11 888	12 774	13 221	13 672
110	7 064	8 280	9 424	10 513	11 565	12 595	13 620	14 137	14 658
120	7 052	8 402	9 682	10 909	12 099	13 269	14 436	15 024	15 617
130	-	8 493	9 911	11 278	12 609	13 923	15 234	15 895	16 561
140	-	8 564	10 124	11 634	13 110	14 569	16 029	16 763	17 504

Current consumption in A

90	13.02	14.14	15.26	16.38	17.46	18.49	19.45	19.90	20.31
100	13.16	14.41	15.68	16.95	18.19	19.38	20.50	21.02	21.52
110	13.22	14.63	16.07	17.51	18.92	20.29	21.59	22.21	22.81
120	13.21	14.80	16.42	18.04	19.65	21.22	22.72	23.45	24.14
130	-	14.89	16.72	18.55	20.37	22.15	23.88	24.71	25.53
140	-	14.90	16.95	19.01	21.06	23.08	25.05	26.01	26.94

Mass flow in lbs/h

90	691	934	1 222	1 559	1 953	2 409	2 933	3 222	3 531
100	651	891	1 174	1 506	1 894	2 342	2 858	3 143	3 447
110	609	845	1 123	1 450	1 831	2 272	2 779	3 059	3 358
120	566	798	1 071	1 391	1 764	2 197	2 695	2 970	3 264
130	-	749	1 016	1 329	1 694	2 118	2 606	2 876	3 164
140	-	699	959	1 264	1 621	2 035	2 513	2 778	3 060

Energy Efficiency Ratio (E.E.R.)

90	4.82	5.88	7.12	8.56	10.18	12.00	14.01	15.07	16.18
100	4.11	5.03	6.09	7.29	8.65	10.17	11.83	12.72	13.64
110	3.48	4.27	5.17	6.18	7.31	8.58	9.97	10.71	11.48
120	2.91	3.58	4.33	5.17	6.12	7.18	8.34	8.96	9.60
130	-	2.93	3.56	4.25	5.03	5.91	6.88	7.39	7.93
140	-	2.32	2.83	3.39	4.03	4.75	5.55	5.99	6.44

Nominal performance at to = 20 °F, tc = 120 °F

Cooling capacity	74 055	Btu/h	Current consumption	19.65	A
Power input	12 099	W	Mass flow	1 764	lbs/h
E.E.R.	6.12				

Pressure switch settings

Maximum HP switch setting	402	psi(g)
Minimum LP switch setting	3	psi(g)
LP pump down setting	13	psi(g)

T 0 : Evaporating temperature at dew point

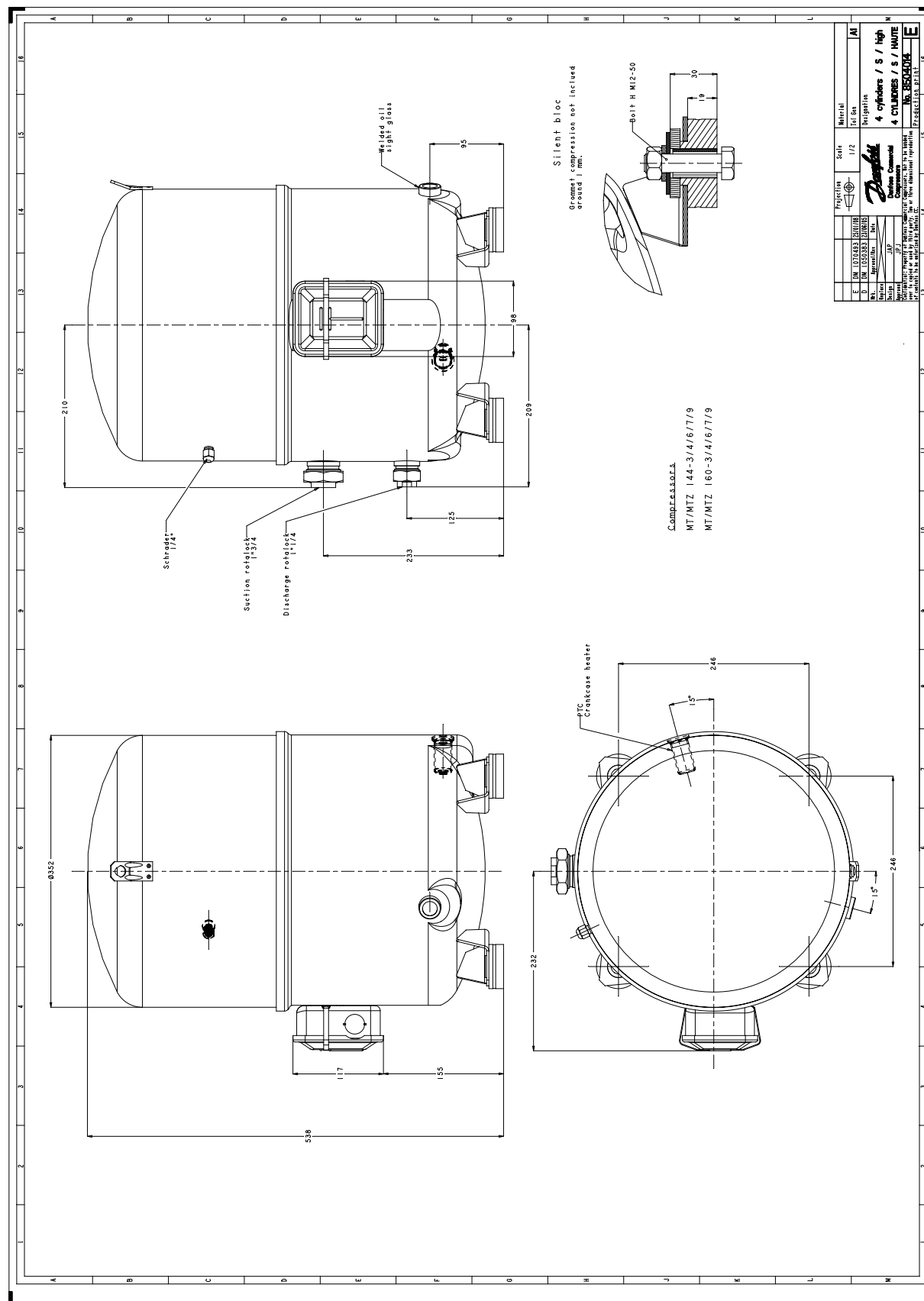
T C : Condensing temperature at dew point

Rating conditions : Superheat = 20 °F , Subcooling = 0 °F

All performance data +/- 5%

Sound power data

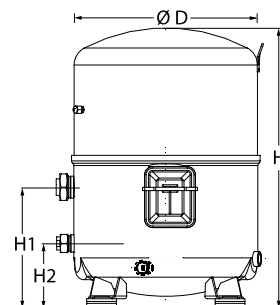
Sound power level	83	dB(A)
With acoustic hood	77	dB(A)



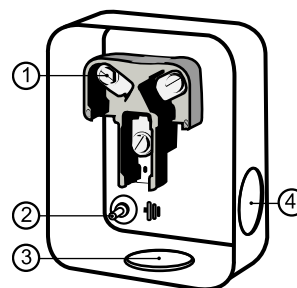
Danfoss can accept no responsibility for possible errors in catalogues, brochures and other printed material. Danfoss reserves the right to alter its products without notice. This also applies to products already on order provided that such alterations can be made without consequential changes being necessary in specifications already agreed. All trademarks in this material are property of the respective companies. Danfoss, the Danfoss logotype and Maneurop are trademarks of Danfoss A/S. All rights reserved.

General Characteristics

Model number (on compressor nameplate)		MTZ160HW4VE
Code number for Singlepack*		MTZ160-4VI
Code number for Industrial pack**		MTZ160-4VM
Drawing number		8504011e
Suction and discharge connections		Rotolock
Suction connection		1-3/4 " Rotolock
Discharge connection		1-1/4 " Rotolock
Suction connection with supplied sleeve		1-1/8 " ODF
Discharge connection with supplied sleeve		3/4 " ODF
Oil sight glass		Threaded
Oil equalization connection		3/8" flare SAE
Oil drain connection		None
LP gauge port		Schrader
IPR valve		435 psi / 115 psi
Cylinders	4	
Swept volume	16.57 in ³ /rev	
Displacement @ Nominal speed	1669 cfh @ 2900 rpm - 2014 cfh @ 3500 rpm	
Net weight	152 lbs	
Oil charge	132 oz, POE - 160PZ	
Maximum system test pressure Low Side / High side	363 psi / 435 psi	
Maximum differential test pressure	435 psi	
Maximum number of starts per hour	12	
Refrigerant charge limit	22 lbs	
Approved refrigerants	R404A, R507A, R134a, R407C	

Dimensions


D=13.9 inch, H=21.3 inch,
H1=9.2 inch, H2=4.9 inch

Terminal box


IP54 (with cable gland)

- 1: Screw connectors 10-32 UNF x 9.5
- 2: Earth M4-12
- 3: Knock-out Ø 29 mm (1.14")
- 4: Knock-out Ø 25.5 mm (1.00")

Electrical Characteristics

Nominal voltage	380-400V/3/50Hz - 460V/3/60Hz
Voltage range	340-440 V @ 50Hz - 414-506 V @ 60Hz
Winding resistance (between phases) +/- 7% at 77°F	1.1 #
Maximum Continuous Current (MCC)	36 A
Locked Rotor Amps (LRA)	140 A
Motor protection	Internal overload protector

Recommended Installation torques

Oil sight glass	37 ft.lbs
Power connections / Earth connection	2 ft.lbs / 1 ft.lbs
Mounting bolts	37 ft.lbs

Parts shipped with compressor

Mounting kit with grommets, bolts, nuts, sleeves and washers
Suction & Discharge solder sleeves, rotolock nuts and gaskets (shipped with rotolock version only)
Initial oil charge
Installation instructions

Approvals : CE certified, UL certified (file SA6873), -

*Singlepack: Compressor in cardboard box

**Industrial pack: 6 Unboxed compressors on pallet (order per multiples of 6)

Datasheet, performance data
Maneurop reciprocating compressor. MTZ160-4
Performance data at 50 Hz, ARI rating conditions
R407C

Cond. temp. in °F (tc)	Evaporating temperature in °F (to)								
	10	20	25	30	35	40	45	50	55

Cooling capacity in Btu/h

100	69 108	90 987	103 570	117 348	132 397	148 790	166 604	185 911	206 815
110	62 907	83 454	95 241	108 136	122 216	137 555	154 228	172 311	191 904
120	-	75 829	86 814	98 820	111 925	126 204	141 732	158 585	176 862
130	-	68 131	78 308	89 421	101 547	114 761	129 139	144 759	161 717
140	-	-	69 746	79 963	91 106	103 253	116 481	130 866	146 504
150	-	-	-	-	80 642	91 725	103 804	116 958	131 282

Power input in W

100	8 274	9 094	9 476	9 844	10 202	10 554	10 904	11 255	11 611
110	8 671	9 645	10 097	10 530	10 948	11 354	11 753	12 148	12 543
120	-	10 133	10 669	11 182	11 675	12 151	12 614	13 069	13 519
130	-	10 537	11 174	11 782	12 364	12 925	13 468	13 998	14 517
140	-	-	11 591	12 309	12 996	13 657	14 296	14 915	15 519
150	-	-	-	-	13 552	14 328	15 077	15 801	16 505

Current consumption in A

100	14.67	15.76	16.28	16.78	17.25	17.68	18.08	18.44	18.75
110	15.13	16.39	17.00	17.60	18.17	18.70	19.21	19.68	20.10
120	-	16.99	17.71	18.41	19.09	19.74	20.36	20.95	21.50
130	-	17.53	18.36	19.18	19.98	20.76	21.51	22.23	22.92
140	-	-	18.92	19.87	20.81	21.73	22.63	23.49	24.32
150	-	-	-	-	21.55	22.62	23.67	24.70	25.69

Mass flow in lbs/h

100	909	1 176	1 327	1 491	1 669	1 860	2 067	2 289	2 529
110	871	1 134	1 283	1 444	1 618	1 806	2 009	2 227	2 461
120	-	1 089	1 234	1 392	1 563	1 747	1 946	2 159	2 389
130	-	1 038	1 181	1 336	1 503	1 684	1 878	2 086	2 311
140	-	-	1 124	1 275	1 439	1 615	1 804	2 008	2 228
150	-	-	-	-	1 368	1 540	1 725	1 924	2 138

Energy Efficiency Ratio (E.E.R.)

100	8.35	10.00	10.93	11.92	12.98	14.10	15.28	16.52	17.81
110	7.25	8.65	9.43	10.27	11.16	12.11	13.12	14.18	15.30
120	-	7.48	8.14	8.84	9.59	10.39	11.24	12.13	13.08
130	-	6.47	7.01	7.59	8.21	8.88	9.59	10.34	11.14
140	-	-	6.02	6.50	7.01	7.56	8.15	8.77	9.44
150	-	-	-	-	5.95	6.40	6.89	7.40	7.95

Nominal performance at to = 45 °F, tc = 130 °F

Cooling capacity	129 139	Btu/h	Current consumption	21.51	A
Power input	13 468	W	Mass flow	1 878	lbs/h
E.E.R.	9.59				

Pressure switch settings

Maximum HP switch setting	426	psi(g)
Minimum LP switch setting	3	psi(g)
LP pump down setting	19	psi(g)

T 0 : Evaporating temperature at dew point

T C : Condensing temperature at dew point

Rating conditions : Superheat = 20 °F , Subcooling = 15 °F

All performance data +/- 5%

Sound power data

Sound power level	0	dB(A)
With acoustic hood	0	dB(A)

Datasheet, performance data
Maneurop reciprocating compressor. MTZ160-4
Performance data at 50 Hz, ARI rating conditions
R134a

Cond. temp. in °F (tc)	Evaporating temperature in °F (to)								
	10	20	30	40	45	50	55	60	65

Cooling capacity in Btu/h

100	43 940	59 230	77 973	100 621	113 551	127 626	142 904	159 441	177 292
110	39 941	54 300	71 912	93 227	105 414	118 697	133 132	148 775	165 683
120	36 127	49 426	65 774	85 625	97 005	109 431	122 957	137 642	153 541
130	32 468	44 575	59 530	77 786	88 294	99 795	112 348	126 009	140 834
140	-	39 717	53 148	69 679	79 248	89 761	101 275	113 846	127 531
150	-	-	-	61 271	69 836	79 295	89 705	101 121	113 601
160	-	-	-	-	-	68 368	77 608	87 805	99 014

Power input in W

100	5 307	5 928	6 534	7 109	7 379	7 635	7 875	8 096	8 297
110	5 509	6 174	6 834	7 473	7 779	8 073	8 354	8 618	8 864
120	5 689	6 405	7 126	7 835	8 180	8 516	8 839	9 150	9 444
130	5 846	6 619	7 408	8 194	8 581	8 960	9 331	9 691	10 037
140	-	6 817	7 678	8 547	8 979	9 407	9 827	10 239	10 640
150	-	-	-	8 895	9 375	9 853	10 327	10 795	11 254
160	-	-	-	-	-	10 299	10 829	11 355	11 875

Current consumption in A

100	10.82	11.49	12.16	12.84	13.18	13.51	13.84	14.16	14.47
110	11.02	11.75	12.51	13.28	13.66	14.05	14.44	14.82	15.19
120	11.20	12.01	12.85	13.72	14.17	14.61	15.06	15.51	15.95
130	11.37	12.26	13.20	14.18	14.68	15.19	15.71	16.23	16.75
140	-	12.50	13.54	14.64	15.21	15.79	16.38	16.97	17.57
150	-	-	-	15.12	15.76	16.41	17.07	17.75	18.43
160	-	-	-	-	-	17.05	17.79	18.55	19.32

Mass flow in lbs/h

100	641	844	1 087	1 373	1 534	1 707	1 894	2 094	2 309
110	613	814	1 053	1 336	1 494	1 666	1 850	2 047	2 259
120	585	782	1 016	1 292	1 448	1 616	1 796	1 990	2 198
130	559	748	975	1 243	1 394	1 557	1 733	1 922	2 125
140	-	714	931	1 188	1 334	1 491	1 661	1 844	2 041
150	-	-	-	1 128	1 267	1 417	1 580	1 756	1 946
160	-	-	-	-	-	1 336	1 491	1 659	1 839

Energy Efficiency Ratio (E.E.R.)

100	8.28	9.99	11.93	14.15	15.39	16.71	18.15	19.69	21.37
110	7.25	8.80	10.52	12.47	13.55	14.70	15.94	17.26	18.69
120	6.35	7.72	9.23	10.93	11.86	12.85	13.91	15.04	16.26
130	5.55	6.73	8.04	9.49	10.29	11.14	12.04	13.00	14.03
140	-	5.83	6.92	8.15	8.83	9.54	10.31	11.12	11.99
150	-	-	-	6.89	7.45	8.05	8.69	9.37	10.09
160	-	-	-	-	-	6.64	7.17	7.73	8.34

Nominal performance at to = 45 °F, tc = 130 °F

Cooling capacity	88 294	Btu/h	Current consumption	14.68	A
Power input	8 581	W	Mass flow	1 394	lbs/h
E.E.R.	10.29				

Pressure switch settings

Maximum HP switch setting	328	psi(g)
Minimum LP switch setting	3	psi(g)
LP pump down setting	7	psi(g)

T 0 : Evaporating temperature at dew point

T C : Condensing temperature at dew point

Rating conditions : Superheat = 20 °F , Subcooling = 15 °F

All performance data +/- 5%

Sound power data

Sound power level	0	dB(A)
With acoustic hood	0	dB(A)

Danfoss can accept no responsibility for possible errors in catalogues, brochures and other printed material. Danfoss reserves the right to alter its products without notice.
This also applies to products already on order provided that such alterations can be made without subsequential changes being necessary in specifications already agreed.
All trademarks in this material are property of the respective companies. Danfoss, the Danfoss logotype and Maneurop are trademarks of Danfoss A/S. All rights reserved.

Datasheet, performance data
Maneurop reciprocating compressor. MTZ160-4
Performance data at 50 Hz, ARI rating conditions
R404A

Cond. temp. in °F (tc)	Evaporating temperature in °F (to)								
	-20	-10	0	10	20	30	40	45	50

Cooling capacity in Btu/h

90	33 372	46 367	62 454	82 072	105 654	133 638	166 456	184 813	204 540
100	28 895	40 806	55 523	73 484	95 124	120 879	151 184	168 177	186 470
110	24 607	35 388	48 689	64 946	84 596	108 076	135 821	151 428	168 263
120	20 493	30 098	41 934	56 441	74 055	95 214	120 351	134 549	149 903
130	-	24 918	35 244	47 954	63 485	82 276	104 761	117 525	131 376
140	-	19 834	28 604	39 470	52 872	69 248	89 035	100 344	112 670

Power input in W

90	6 929	7 885	8 767	9 591	10 374	11 133	11 885	12 263	12 645
100	7 027	8 112	9 124	10 079	10 995	11 888	12 774	13 221	13 672
110	7 064	8 280	9 424	10 513	11 565	12 595	13 620	14 137	14 658
120	7 052	8 402	9 682	10 909	12 099	13 269	14 436	15 024	15 617
130	-	8 493	9 911	11 278	12 609	13 923	15 234	15 895	16 561
140	-	8 564	10 124	11 634	13 110	14 569	16 029	16 763	17 504

Current consumption in A

90	13.02	14.14	15.26	16.38	17.46	18.49	19.45	19.90	20.31
100	13.16	14.41	15.68	16.95	18.19	19.38	20.50	21.02	21.52
110	13.22	14.63	16.07	17.51	18.92	20.29	21.59	22.21	22.81
120	13.21	14.80	16.42	18.04	19.65	21.22	22.72	23.45	24.14
130	-	14.89	16.72	18.55	20.37	22.15	23.88	24.71	25.53
140	-	14.90	16.95	19.01	21.06	23.08	25.05	26.01	26.94

Mass flow in lbs/h

90	691	934	1 222	1 559	1 953	2 409	2 933	3 222	3 531
100	651	891	1 174	1 506	1 894	2 342	2 858	3 143	3 447
110	609	845	1 123	1 450	1 831	2 272	2 779	3 059	3 358
120	566	798	1 071	1 391	1 764	2 197	2 695	2 970	3 264
130	-	749	1 016	1 329	1 694	2 118	2 606	2 876	3 164
140	-	699	959	1 264	1 621	2 035	2 513	2 778	3 060

Energy Efficiency Ratio (E.E.R.)

90	4.82	5.88	7.12	8.56	10.18	12.00	14.01	15.07	16.18
100	4.11	5.03	6.09	7.29	8.65	10.17	11.83	12.72	13.64
110	3.48	4.27	5.17	6.18	7.31	8.58	9.97	10.71	11.48
120	2.91	3.58	4.33	5.17	6.12	7.18	8.34	8.96	9.60
130	-	2.93	3.56	4.25	5.03	5.91	6.88	7.39	7.93
140	-	2.32	2.83	3.39	4.03	4.75	5.55	5.99	6.44

Nominal performance at to = 20 °F, tc = 120 °F

Cooling capacity	74 055	Btu/h	Current consumption	19.65	A
Power input	12 099	W	Mass flow	1 764	lbs/h
E.E.R.	6.12				

Pressure switch settings

Maximum HP switch setting	402	psi(g)
Minimum LP switch setting	3	psi(g)
LP pump down setting	13	psi(g)

T 0 : Evaporating temperature at dew point

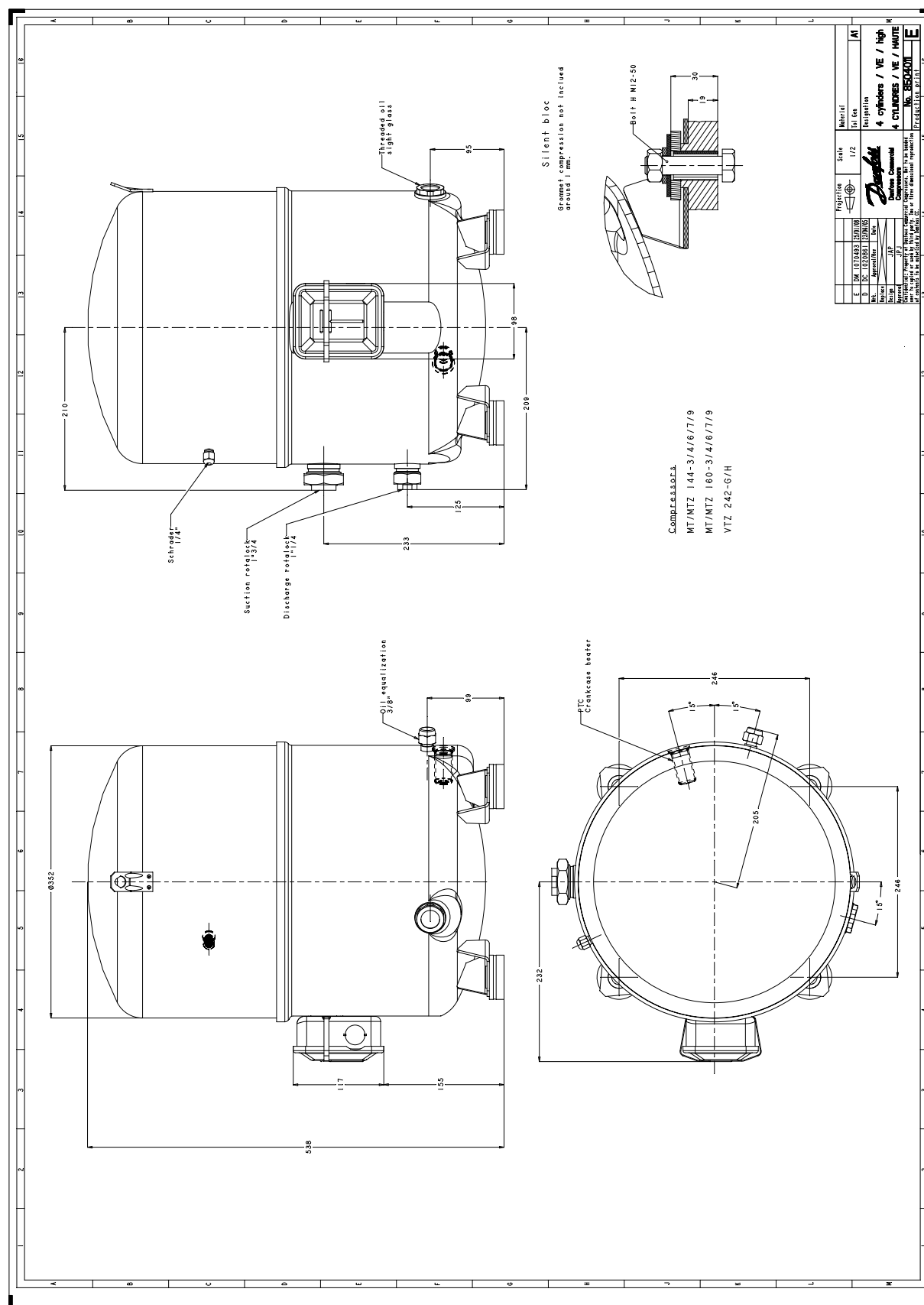
T C : Condensing temperature at dew point

Rating conditions : Superheat = 20 °F , Subcooling = 0 °F

All performance data +/- 5%

Sound power data

Sound power level	83	dB(A)
With acoustic hood	77	dB(A)



Danfoss can accept no responsibility for possible errors in catalogues, brochures and other printed material. Danfoss reserves the right to alter its products without notice. This also applies to products already on order provided that such alterations can be made without consequential changes being necessary in specifications already agreed. All trademarks in this material are property of the respective companies. Danfoss, the Danfoss logotype and Maneurop are trademarks of Danfoss A/S. All rights reserved.