



## EJB - S series enclosures

### • Use

EJB S series enclosures are normally used in the chemical and petrochemical plants, off-shore platforms, refineries and any other industry where hazardous atmospheres (gas and combustible dust) are potentially present.

The EJB S range has been designed to meet the main requirements of power distribution, monitoring and signalling, and other electrical functions inside the hazardous area of the plant.

### • Function

The EJB S series can be used for the following main applications:

- control station and instrument housing
- motor starter unit
- lighting control panel
- electronic grounding system
- terminal and bus-bars box

and fitted with other electrical and/or electronic equipment as per client specifications.

### • Construction

The materials used to manufacture the EJB S series have been studied to grant the maximum protection against the highly corrosive agents present in these industries:

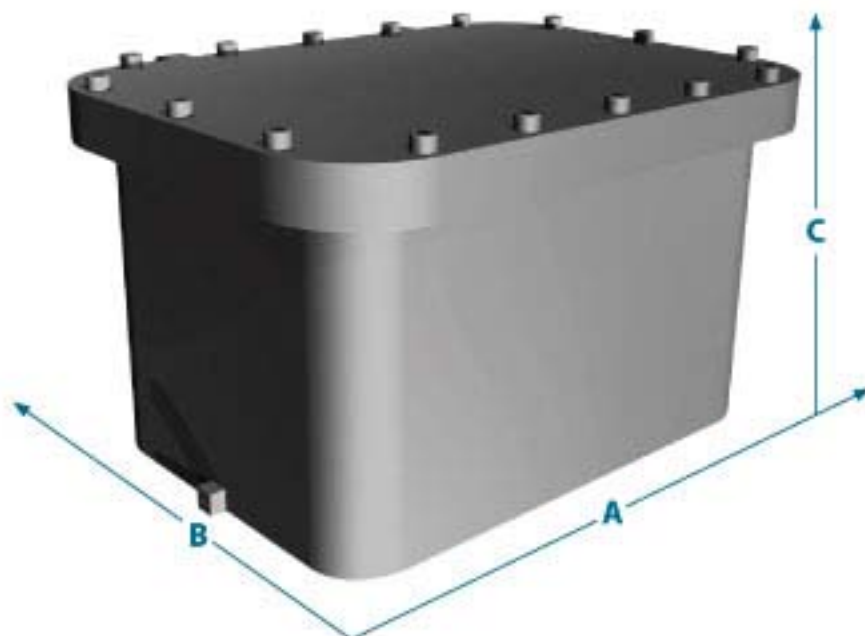
- body and cover in stainless steel
- external epoxy powder coating RAL 7035 (on request)
- internal anticondensation coating and drain and breather valves (on request)
- bolts and earthing screw in stainless steel
- gasket on cover in silicone
- window in thermoresistant glass sealed with auto-leveling silicone

### • Protection

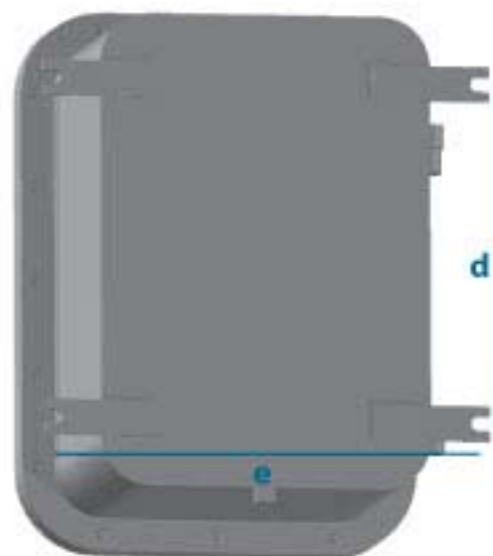
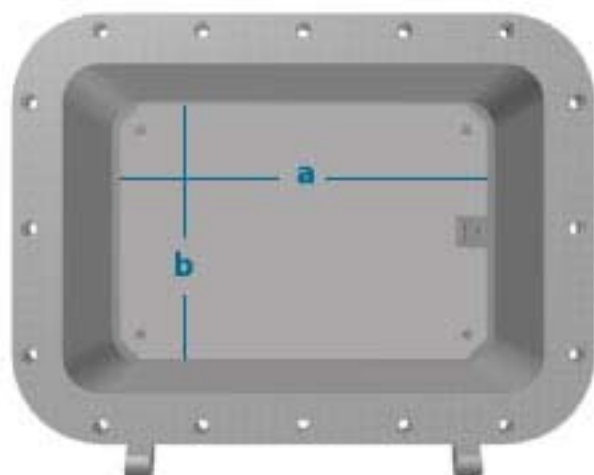
certificate number:	IMQ 11 ATEX 031
marking:	Ⓔ II 2GD Ex de [(ia)]/[(ib)] IIB+H; T6~T3 Gb Ex tb IIC T85°C~T150°C Db
ambient temperature:	-60°C +60°C
degree of protection:	IP66
conformity:	Directive ATEX 94/9/EC
standards:	EN60079-0 / EN60079-1 / EN60079-7 / EN60079-11 / EN60079-31 / EN60529
category:	suitable for Zone 1 – 21 (gas) and Zone 2 – 22 (dust)



Supermec, always paid special attention to on-site installation issues. Introducing new EJB S series, we designed a special anti-loosening bolt to make the job easier for maintenance staff.

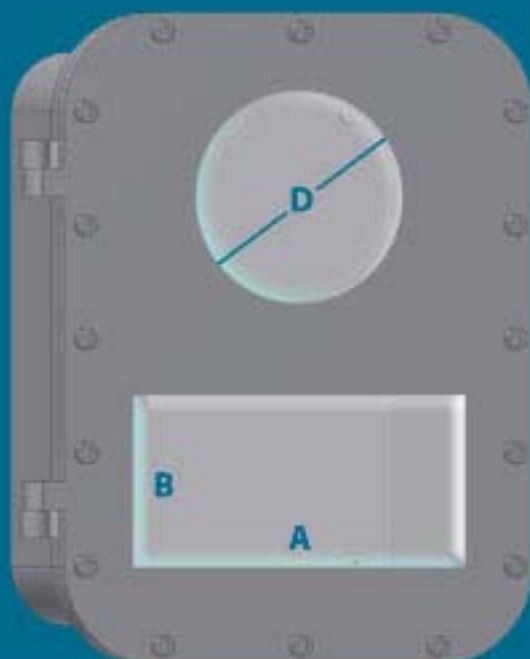


code	overall dimensions			mounting plate		fixing dimensions		
	A	B	C	a	b	d	e	screw
EJB 1 S	300	230	200	180	110	160	230	M10
EJB 2 S	390	230	210	270	110	250	230	M10
EJB 3 S	390	300	260	270	180	250	300	M10
EJB 4 S	460	340	280	340	220	320	340	M10
EJB-4S S	540	380	280	420	260	400	380	M10
EJB 5 S	640	460	330	520	340	500	460	M10
EJB 5S S	720	540	350	560	380	540	540	M12
EJB 6 S	800	600	440	620	420	600	600	M12
EJB 7 S	1000	700	445	820	520	800	700	M12



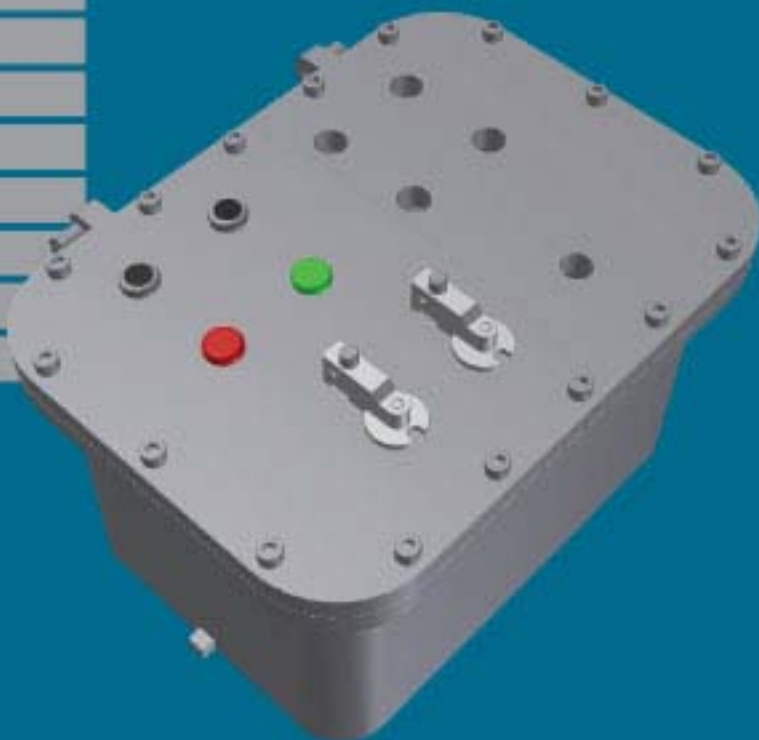


	maximum number of hubs on long side									maximum number of hubs on short side								
	M20	M25	M32	M40	M50	M63	M75	M90		M20	M25	M32	M40	M50	M63	M75	M90	
METRIC																		
NPT	1/2"	3/4"	1"	1 1/4"	1 1/2"	2"	2 1/2"	3"	4"	1/2"	3/4"	1"	1 1/4"	1 1/2"	2"	2 1/2"	3"	4"
EJB 1 S	6	6	6	4	2	2	1	1	-	4	4	4	2	1	1	1	1	-
EJB 2 S	10	10	8	8	3	3	2	2	1	6	4	4	3	2	1	1	1	-
EJB 3 S	15	15	12	11	6	6	3	2	2	12	9	9	6	4	4	2	1	1
EJB 4 S	28	24	15	15	11	11	6	3	3	16	12	10	9	6	5	4	2	1
EJB 45 S	32	28	21	18	14	12	8	5	3	20	18	14	12	8	5	5	2	2
EJB 5 S	50	36	32	27	18	15	10	7	5	35	24	20	15	12	8	6	5	3
EJB 55 S	60	50	36	32	21	17	14	8	6	40	35	24	21	15	12	8	6	4
EJB 6 S	72	66	50	40	32	24	18	11	8	48	42	35	24	20	14	12	8	5
EJB 7 S	96	84	65	48	40	32	24	17	10	60	54	40	28	24	17	15	11	6



	maximum size of windows on cover				
	code	qty	square		circular
A			B	qty	D
EJB 1 S	1	140	70	1	80
EJB 2 S	1	240	70	1	80
EJB 3 S	1	190	140	1	80
EJB 4 S	1	290	190	2	80
EJB 45 S	1	290	190	1	130
EJB 5 S	1	290	190	2	130
EJB 55 S	1	400	300	2	130
EJB 6 S	2	400	300	2	130
EJB 7 S	2	400	300	2	130

	maximum number of operators on cover	
code	push button pilot light units	MCB 60 Ah 3 P
EJB 1 S	6	2
EJB 2 S	10	2
EJB 3 S	15	4
EJB 4 S	24	9
EJB 45 S	35	12
EJB 5 S	54	16
EJB 55 S	70	20
EJB 6 S	77	25
EJB 7 S	84	24



### • Examples of electrical installations

