



UNIGEN *family*

Connecting with Windows 7/8



Part number:
A51 Z0 9 0246

CRE Technology believes that all information provided herein is correct and reliable and reserves the right to update at any time. CRE Technology does not assume any responsibility for its use. E & O E.

CRE TECHNOLOGY



130, Allée Victor Naudin
Zone des Templier
Sophia-Antipolis
06410 Biot
FRANCE



Phone: +33 (0)4 92 38 86 82

Fax: +33 (0)4 92 38 86 83

Website: www.cretechnology.com



Email: info@cretechnology.com

NOTE



Read this entire manual and all other publications pertaining to the work to be performed before installing, operating, or servicing this equipment. Apply all plant and safety instructions and precautions. Failure to follow instructions can cause personal injury and/or property damage.

Motors, turbines and any other type of generator must be equipped with protections (overspeed, high temperature, low pressure... depending on the power plant).

Any changes of the normal use of the equipment can cause human and material damage.

For further information, please contact your CRE technology distributor or the After-Sales Service Team.

All CRE Technology products are delivered with one year warranty, and if necessary we will be happy to come on site for product commissioning or troubleshooting. The company also provide specific trainings on our products and softwares.



Technical support: +33 (0)4 92 38 86 86 (office hours: 8.30AM-12AM / 2PM-6PM GMT+1).

Email: support@cretechnology.com



SKYPE: support-cretechnology.com



INFORMATION

You can download the most up-to-date version of this documentation and different other documentations relating to CRE technology products on our Web site <http://www.cretechnology.com>.

Document history

VERSION	DATE	MODIFICATION
A	January 2013	Initial document.
B	February 2013	Details for Windows 8 settings.

Documentations available on CRE technology Web site:

A51 Z0 9 0004: Technical documentation for UNIGEN / UNIGEN *PLUS*.

A51 Z3 9 0004: Technical documentation for UNIGEN *ILS*.

Table of contents

1	Installing the standard modem.....	5
2	Create a dial-up connection	9
3	Updating Windows “Hosts” file	16
4	Setting up Internet Explorer.....	19
5	CRE TECHNOLOGY	21

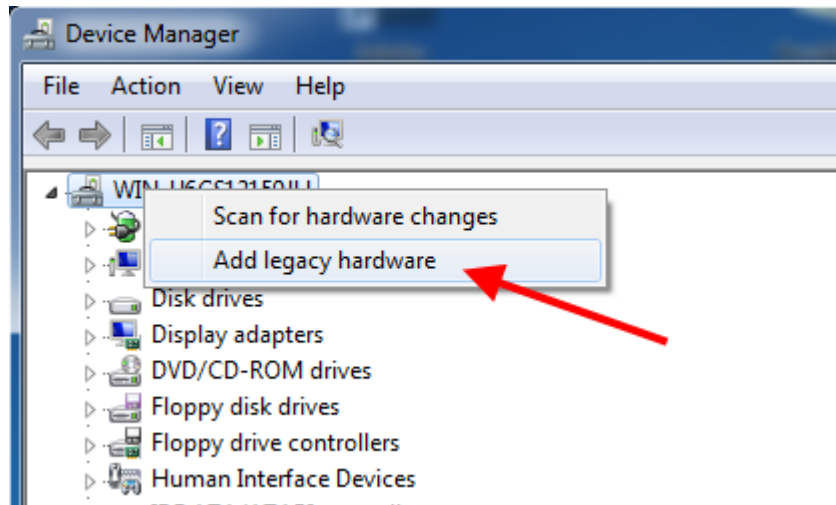
Note:

This document describes how to connect a computer running Microsoft Windows 7 or Windows 8 operating system to a UNIGEN module using an RS232 serial communication port.

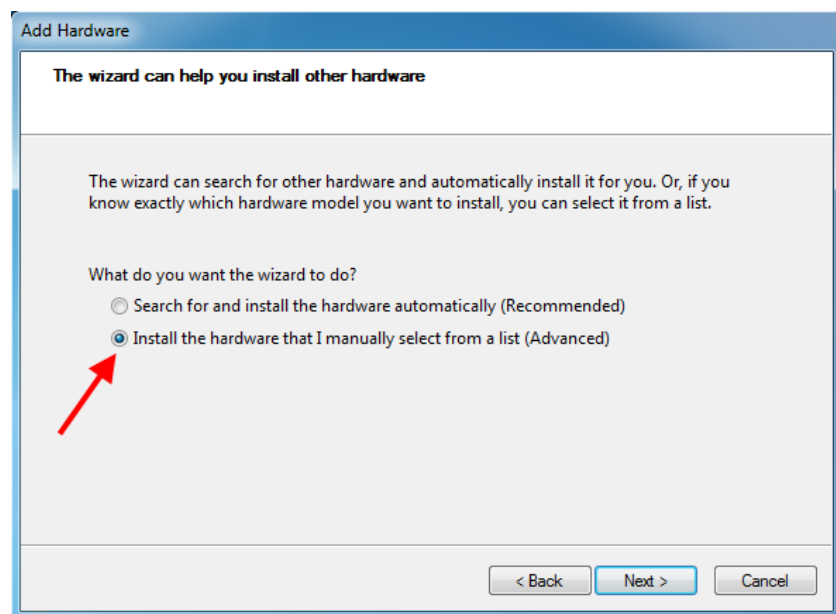
The same method also applies under previous versions of Windows such as Windows XP and Windows Vista but the layout in the configuration panel and the dialog boxes may differ depending on the operating system.

1 Installing the standard modem

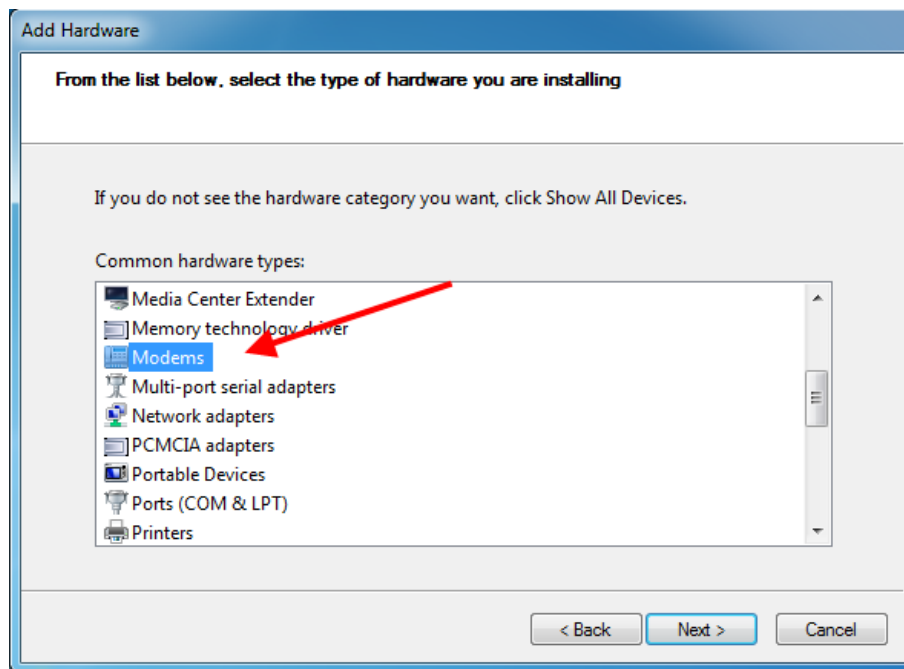
- 1) Click on **"Start>Control Panel>Device Manager"**.
- 2) Right click on your computer's name (see below)



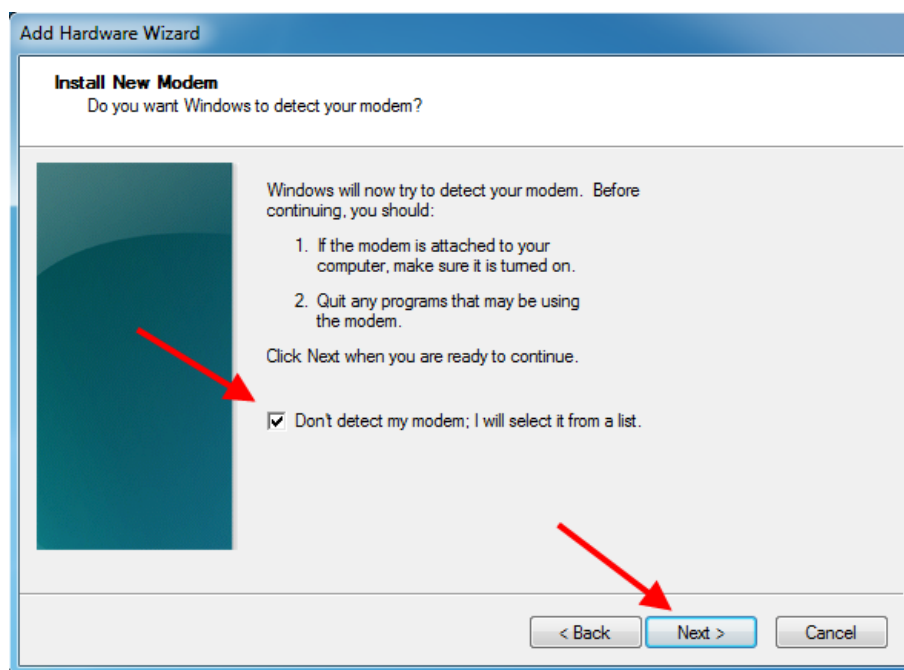
- 3) Click on **"Add legacy hardware"**.
- 4) The Add hardware wizard appears: click on **"Next"**.
- 5) Select **"Install the hardware that I manually select from a list (Advanced)"**.



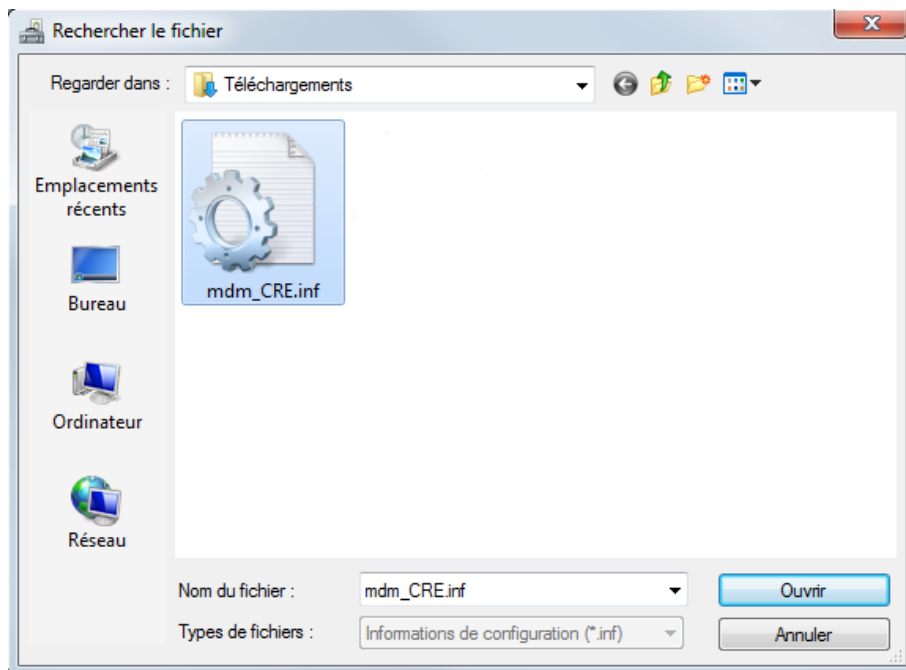
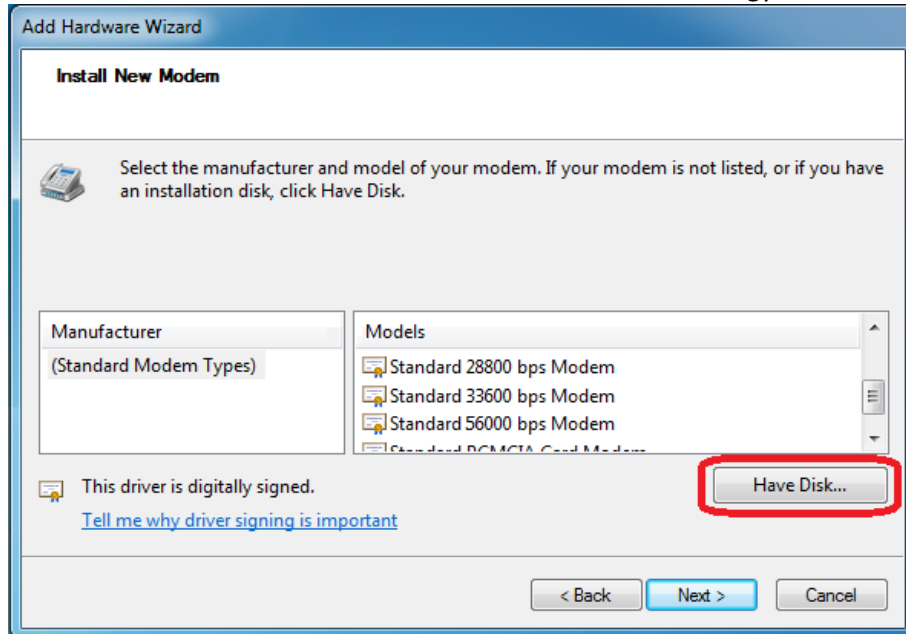
- 6) Choose the hardware type **“Modems”** and click on **“Next”**.



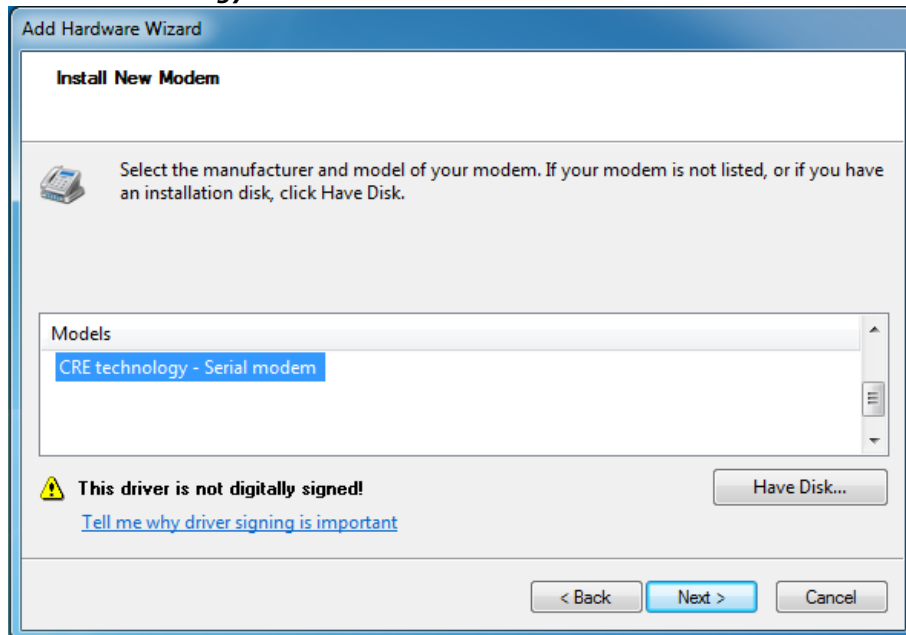
- 7) Select **“Don’t detect my modem; I will select it from a list”** and click on **“Next”**.



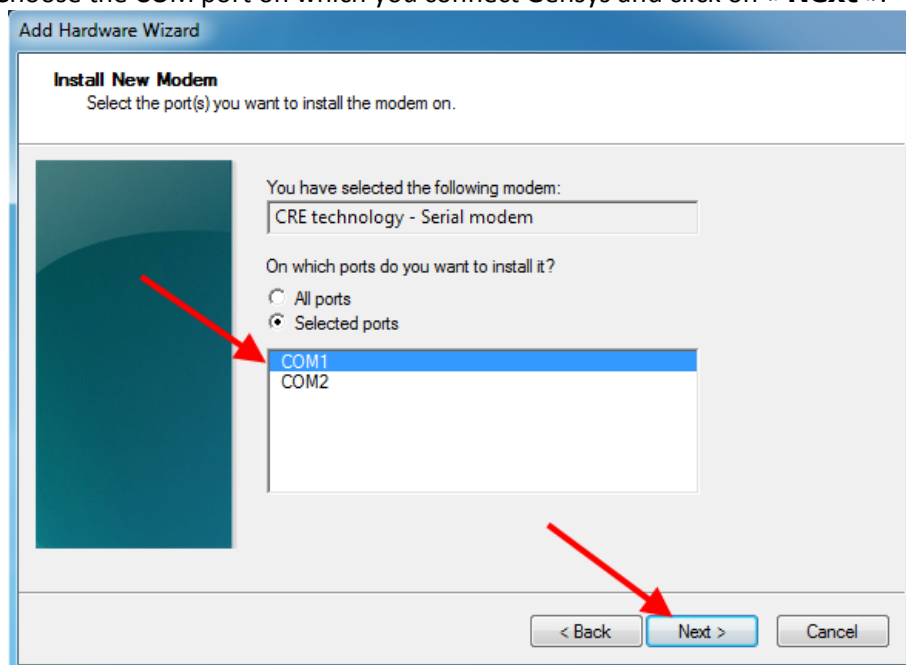
- 8) Click on « **Have Disk** » button and browse to the CRE technology driver file “*mdm_CRE.inf*”.



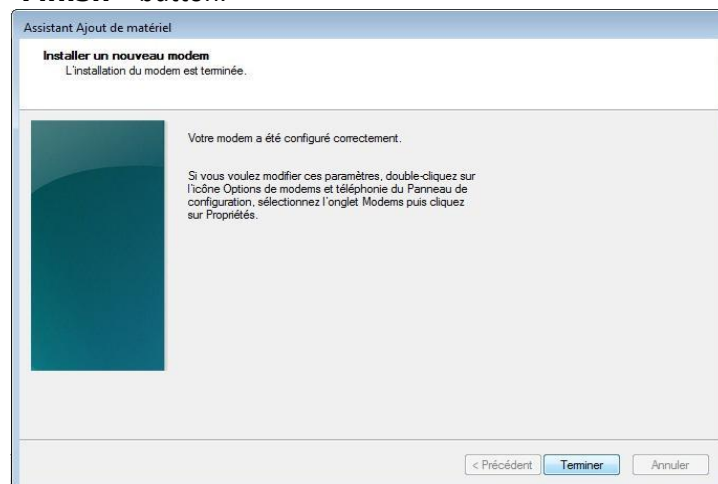
9) Select “**CRE technology – serial modem**” and click on « **Next** ».



10) Choose the COM port on which you connect Gensys and click on « **Next** ».

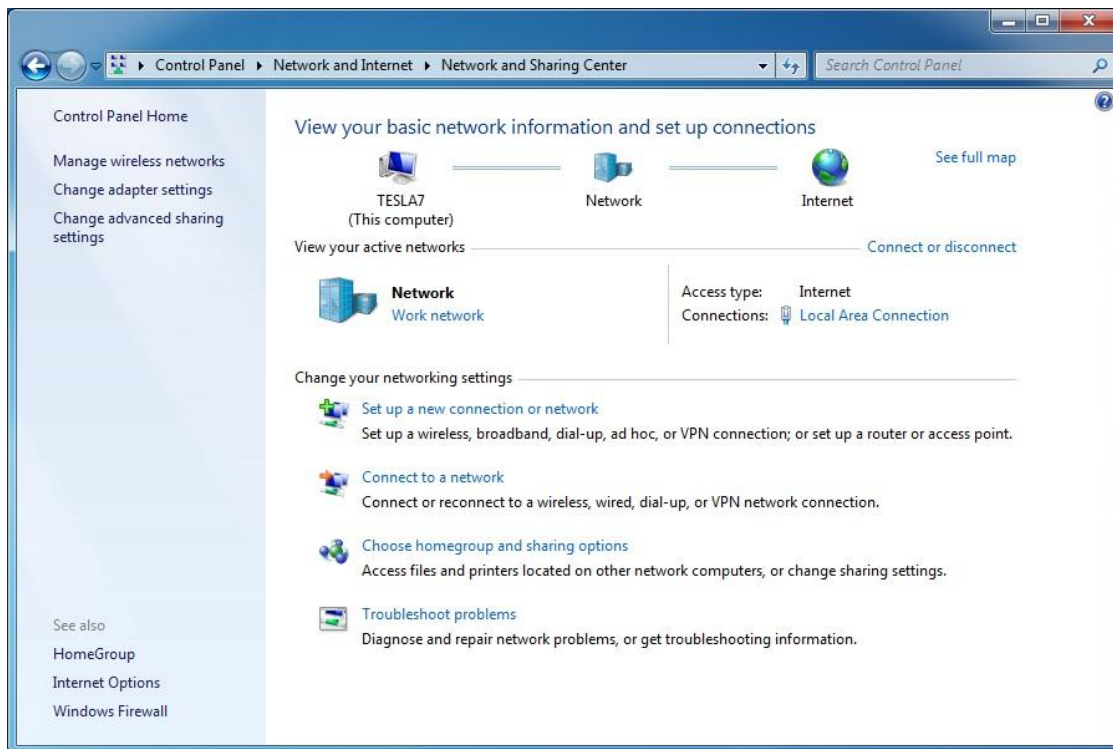


11) Click on « **Finish** » button.

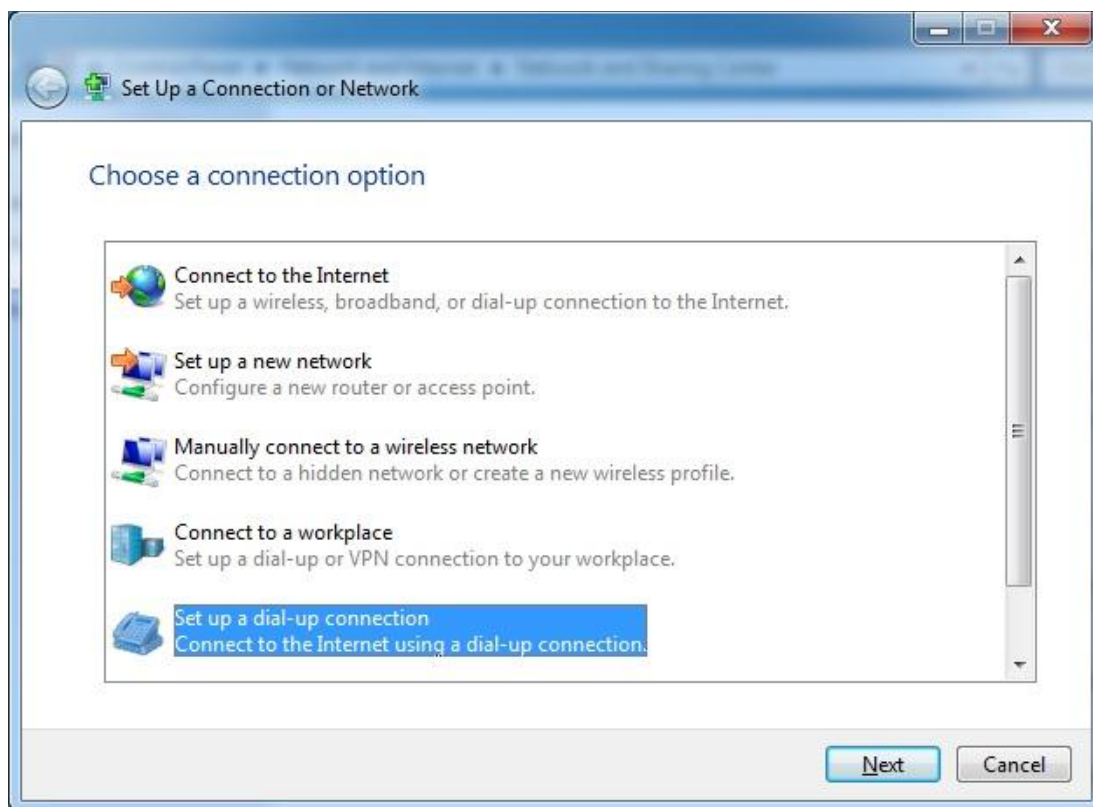


2 Create a dial-up connection

- 1) Click on **"Start > Control panel > Network and Sharing center"**.
- 2) Click on **"Connect to a network"**.



- 3) On Windows 7: select **"Setup a dial-up connection"**, on Windows 8 select **"Connect to a workplace"** and then select **"Dial directly"**.



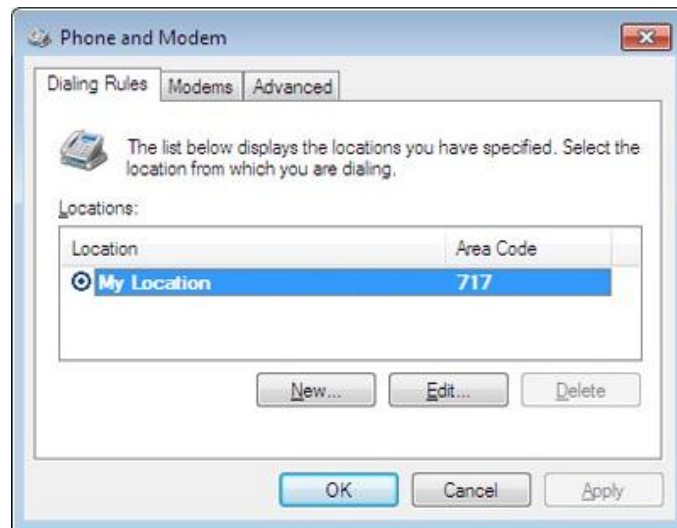
- 4) Now select the modem you have just installed on previous chapter.



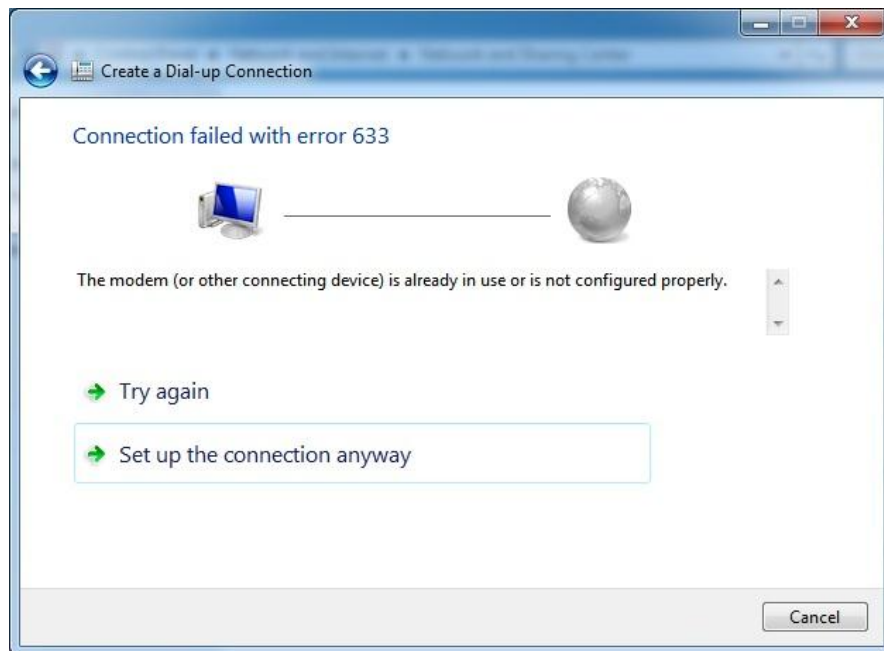
- 5) Type in “123” for both phone number and password. Fill in the form as shown below and then click on “connect”.



Note: you may need to activate dialing rules, either by using “Dialing rules” in the window above or through control panel section “Phone and Modem”. See example in the screenshot below.



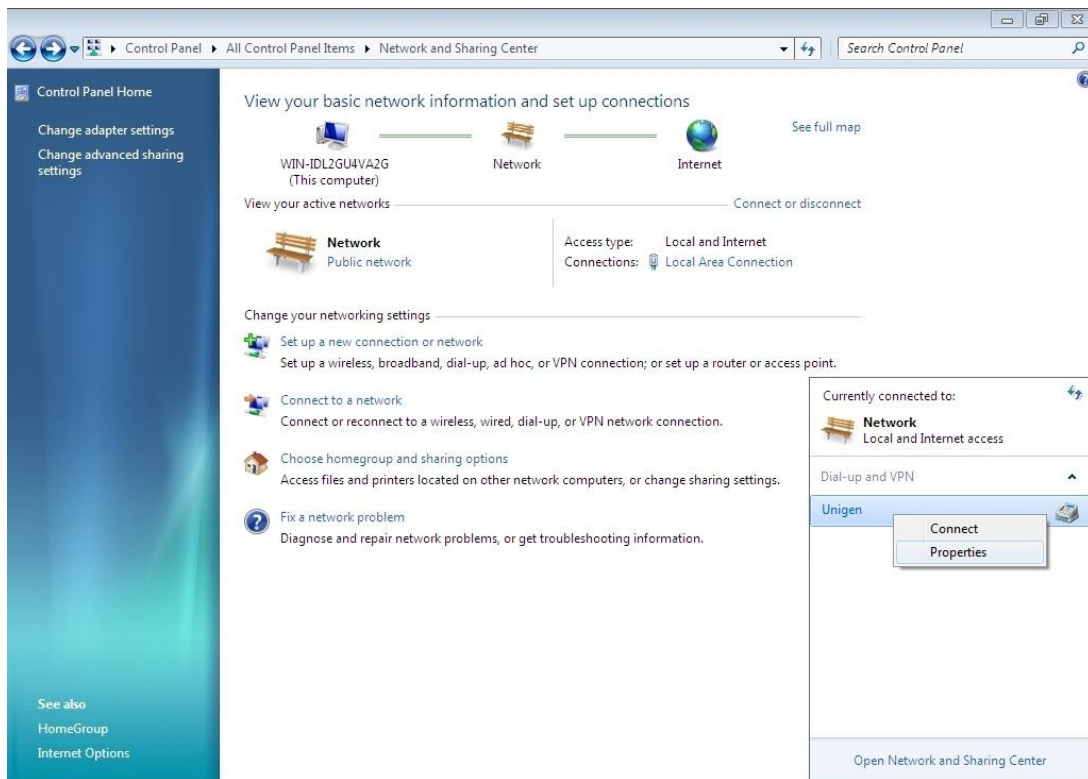
- 6) Connection will fail as shown on the next picture.



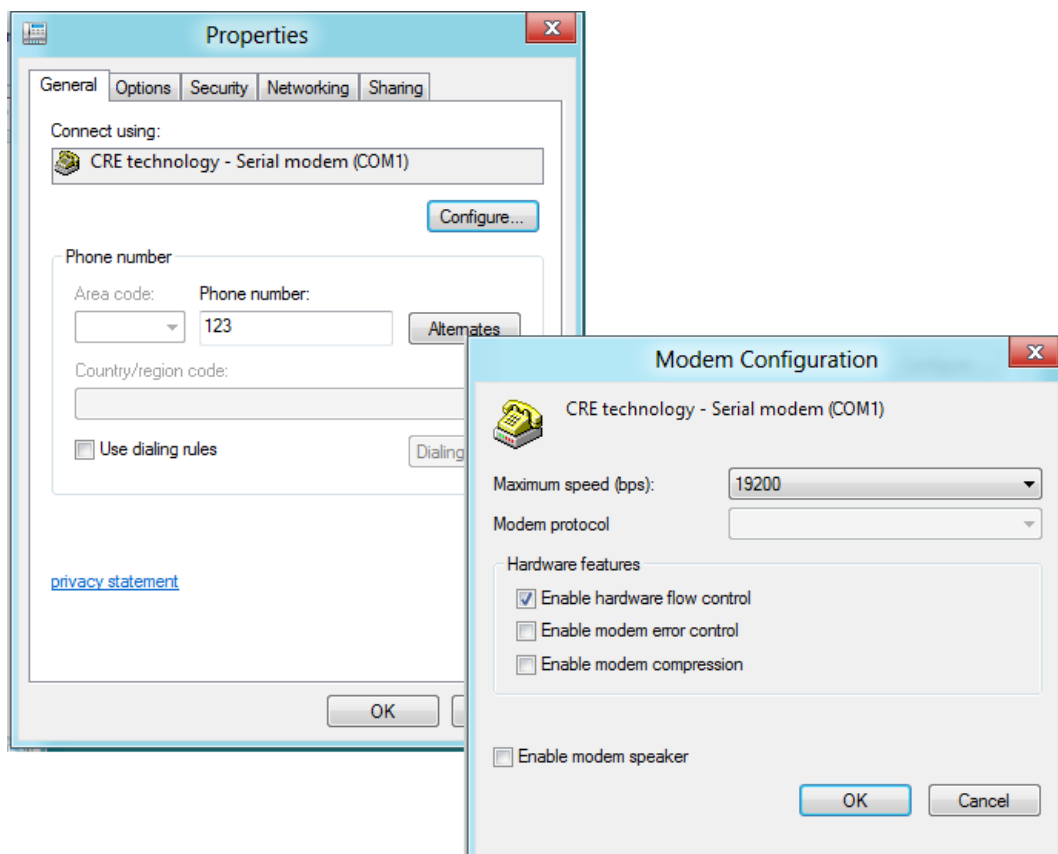
- Click on ***“Setup the connection anyway”*** and then close the window.



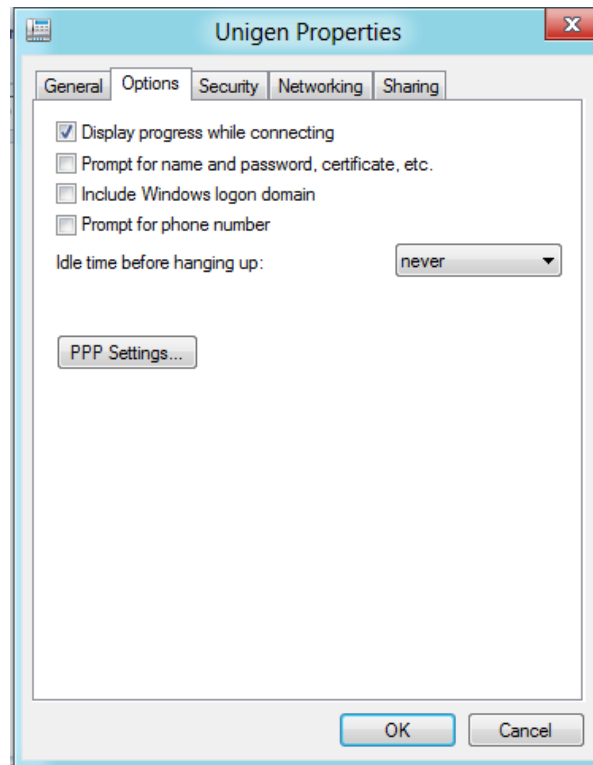
- 7) Click on **“Start > Control panel > Network and Sharing center”**.
- 8) Click on **“Connect to a network”** and select the dial-up connection you have just created. Right click on it and select **“Properties”**.



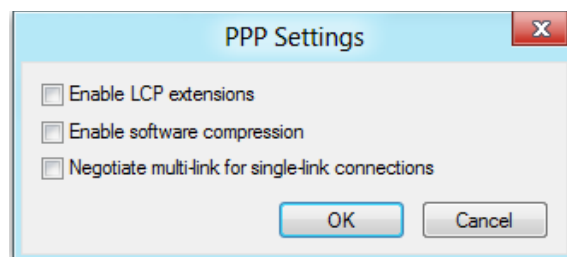
- 9) Verify that the proper modem is checked and click on **“Configure”**.
- 10) Make sure the maximum speed is set to 19200bps and that only the hardware flow control box is checked.



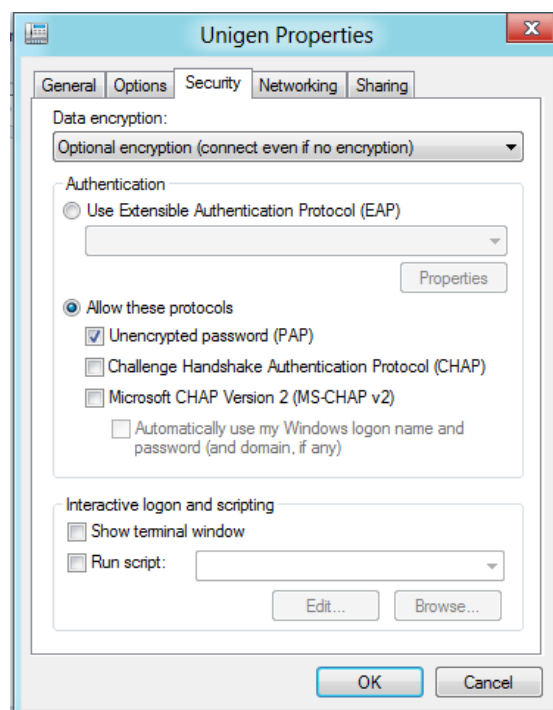
11) Click on “**Options**” tab and setup as shown below (left or right picture depending on your operating system).



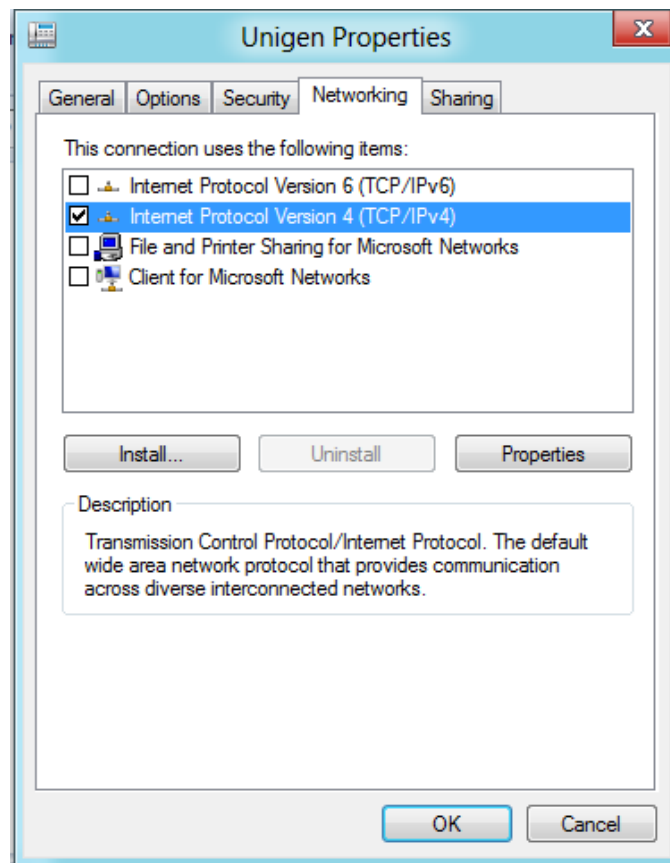
12) Click on “**PPP**” and make sure that no option is checked then click “**OK**”.



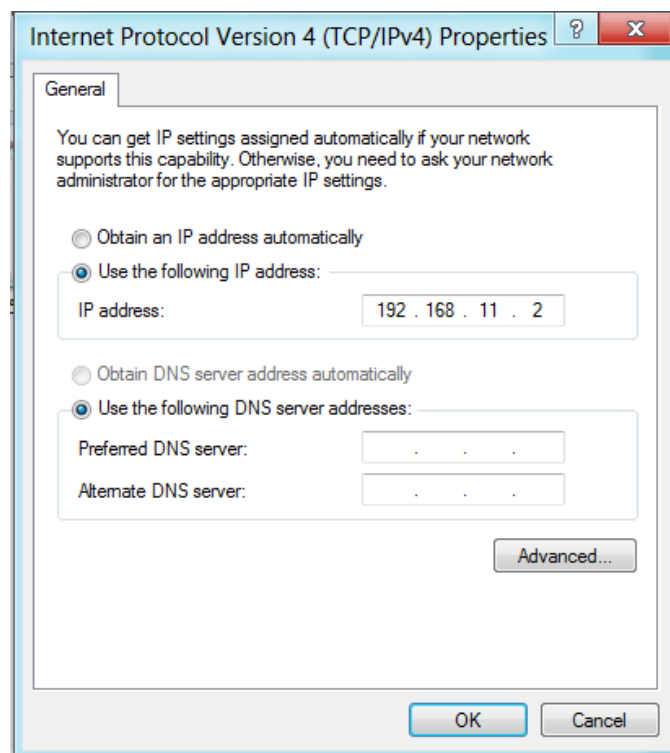
- Select “**Security**” tab and set it up as shown below.



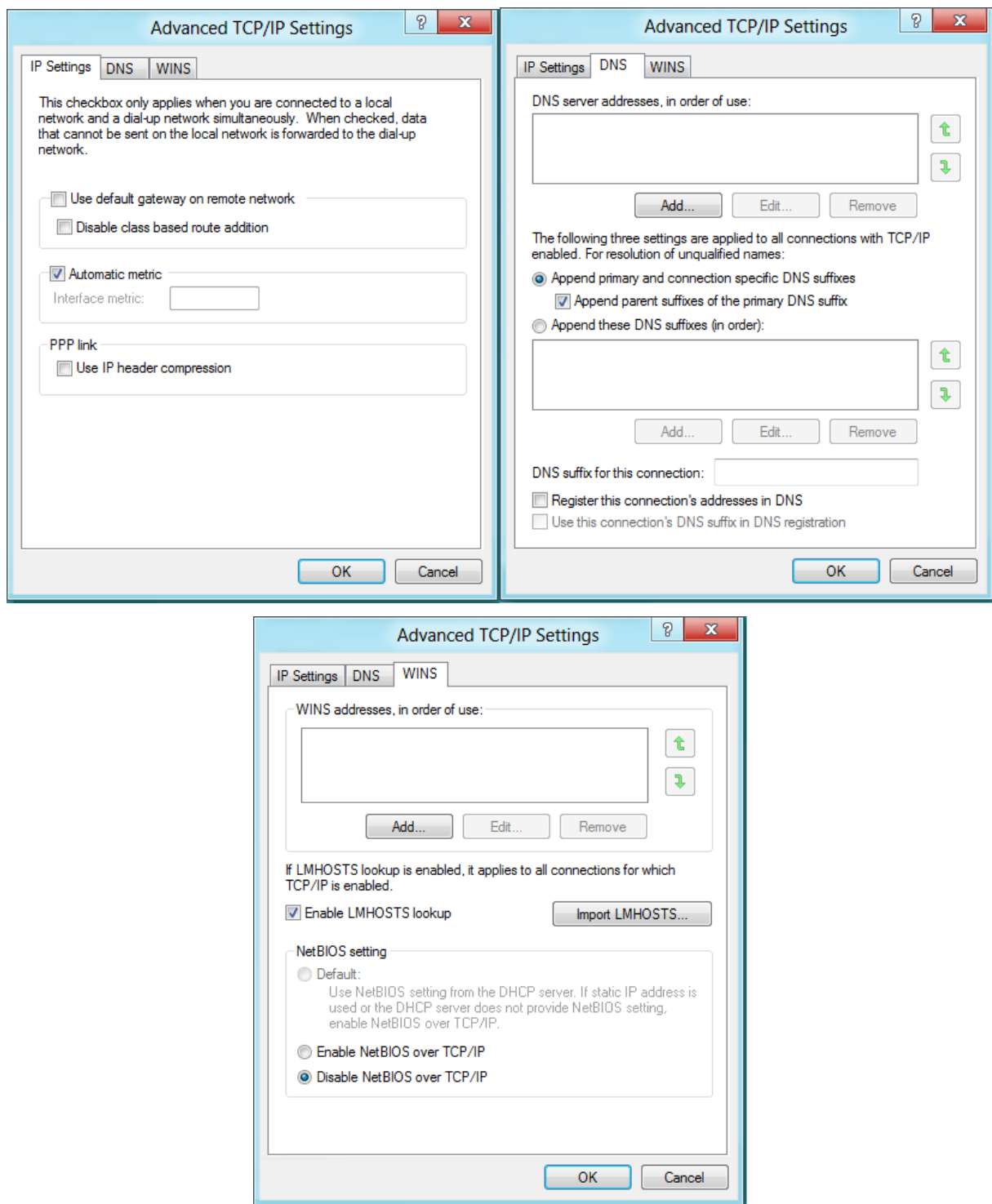
13) Select “**Networking**” tab and check only the box next to Internet Protocol Version 4. Select this line and click on “**Properties**”.



• “**Use the following IP address:**” “192.168.11.2” for your computer (CRE technology module address is set to 192.168.11.1).



- 14) Click on “**Advanced...**” button and set all tabs as shown on the three pictures below



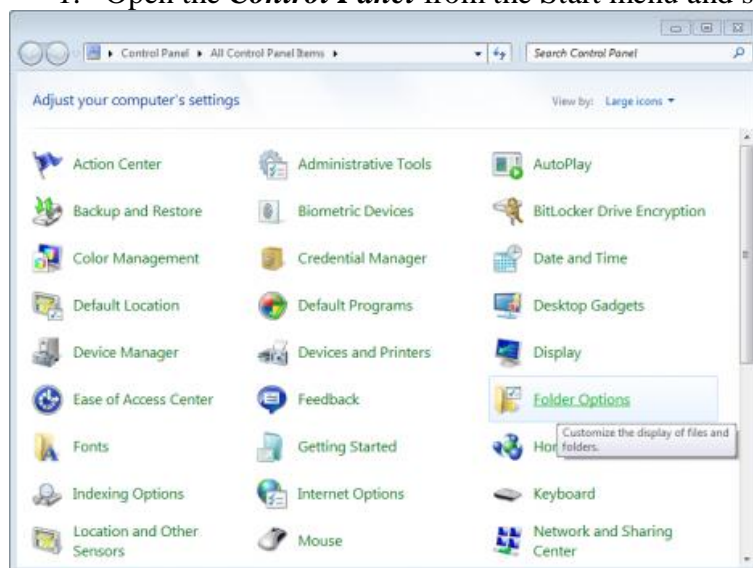
- 15) Click on “**OK**” to save the new settings.

3 Updating Windows “Hosts” file

Note that administrative rights are required on your computer to follow this procedure.

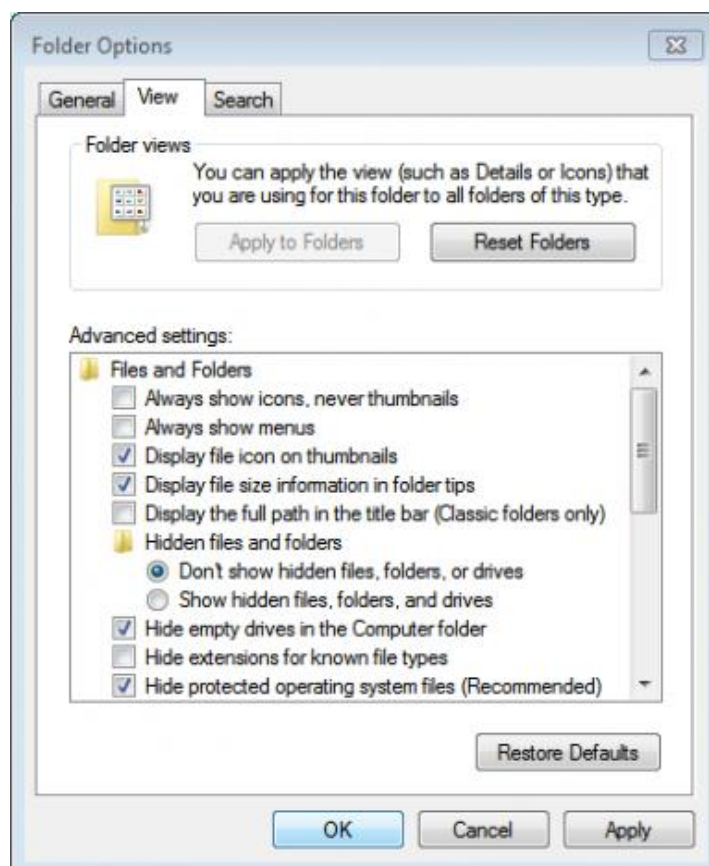
You should first make sure Windows display file extensions properly in your file explorer. To do so follow the next steps.

1. Open the **Control Panel** from the Start menu and select **Folder Options** in the Control Panel.



Note: If Folder Options is not available, change **View by** to **Large icons** at the top right of the Control Panel.

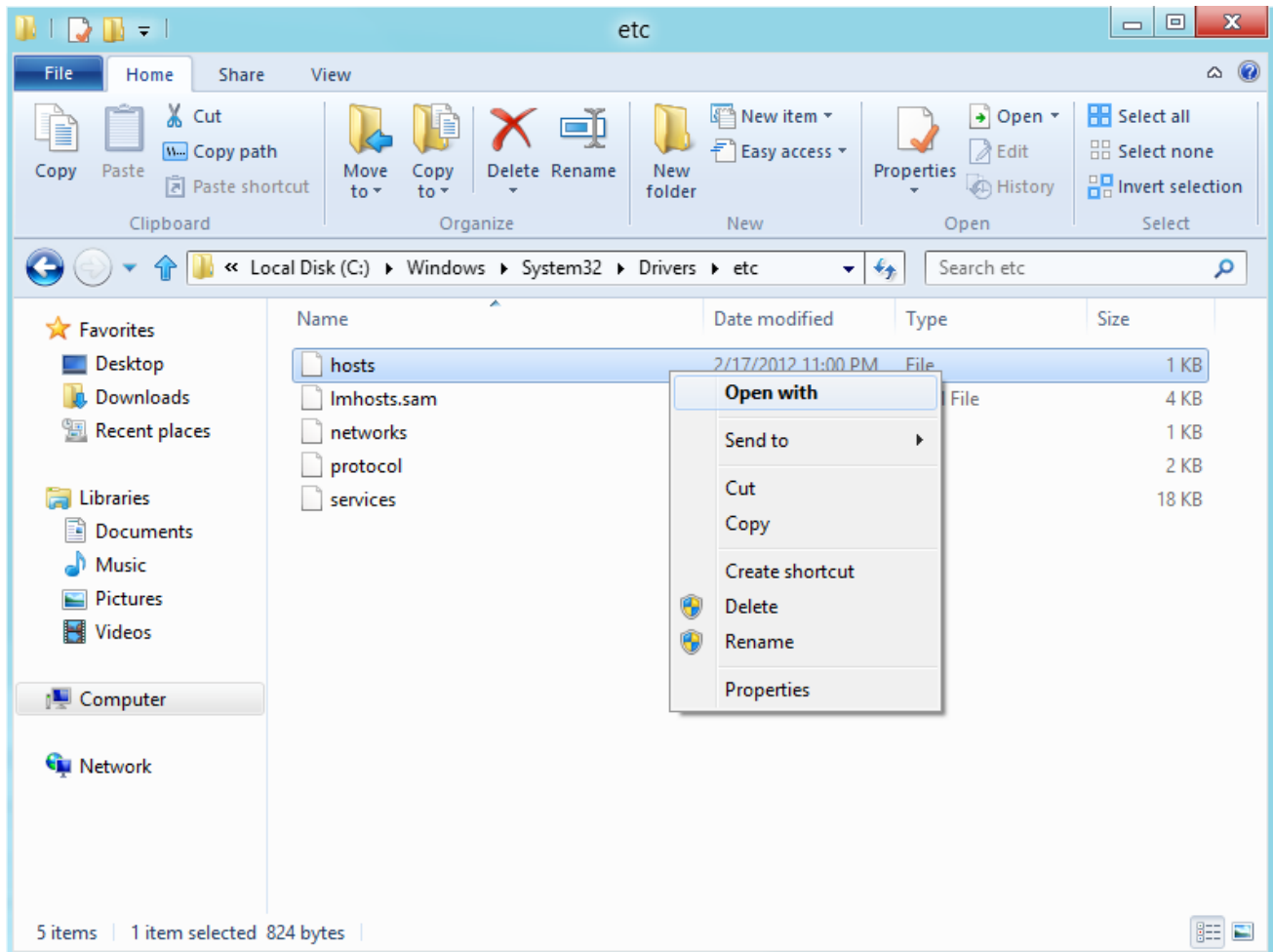
2. Select **View** tab in the Folder Options window and uncheck **Hide extensions for known file types**.



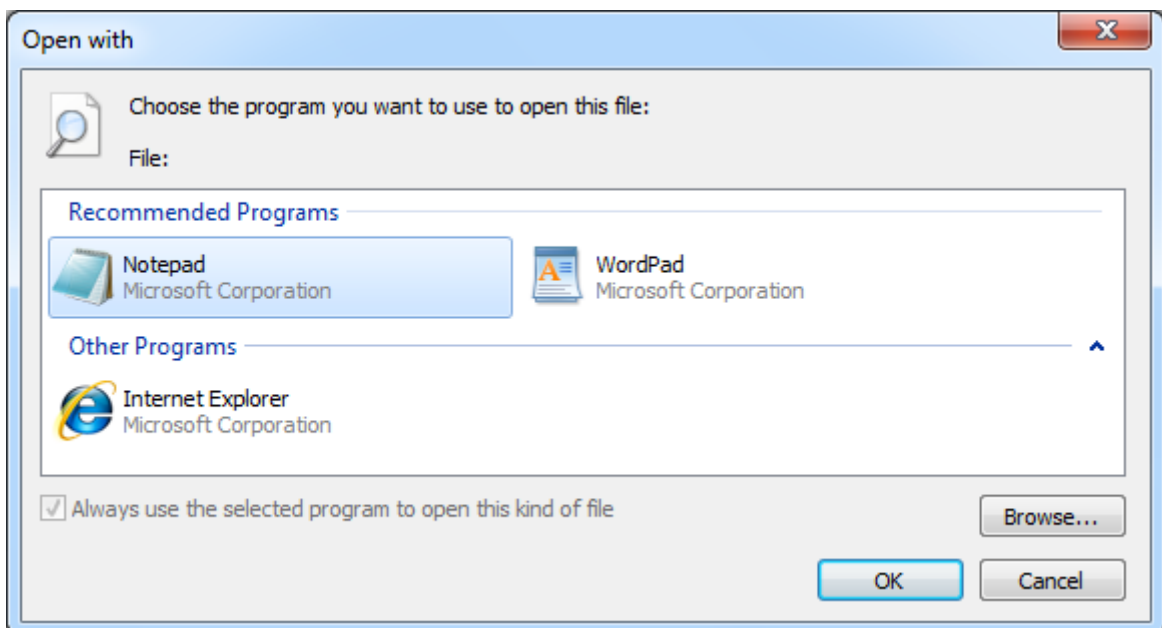
3. Click **OK** to save the changes.

You may now proceed with Windows hosts file as described below.

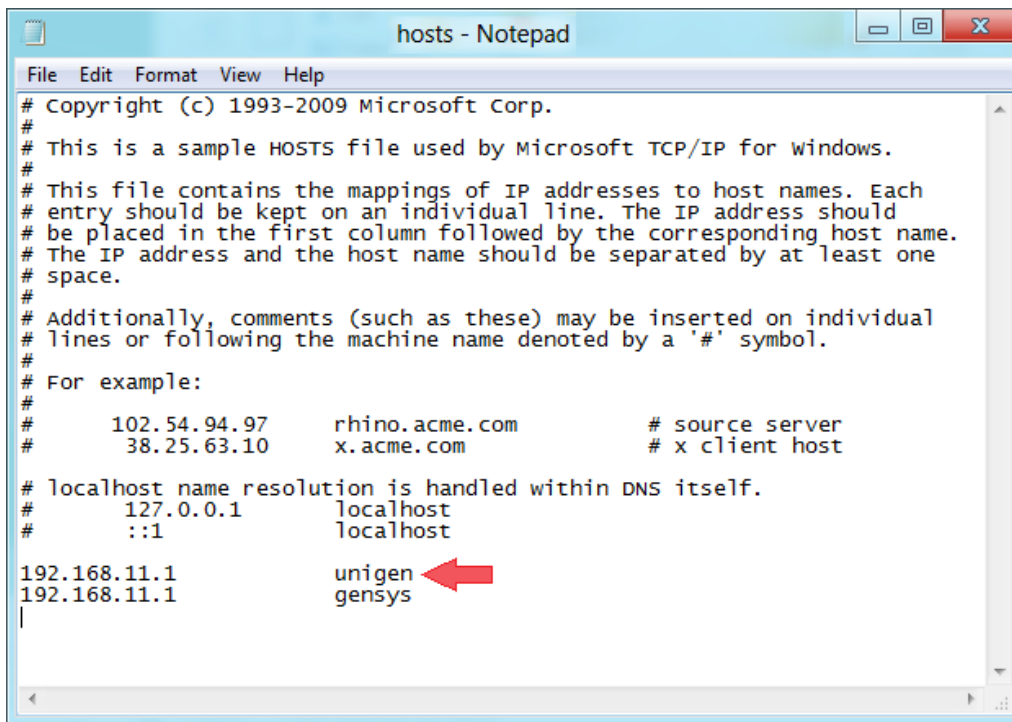
- 1) Go to **C:\Windows\System32\drivers\etc\hosts** and select “**hosts**” file.
- 2) Right click on this file and select “**Open**”.



- 3) Select **Notepad** application



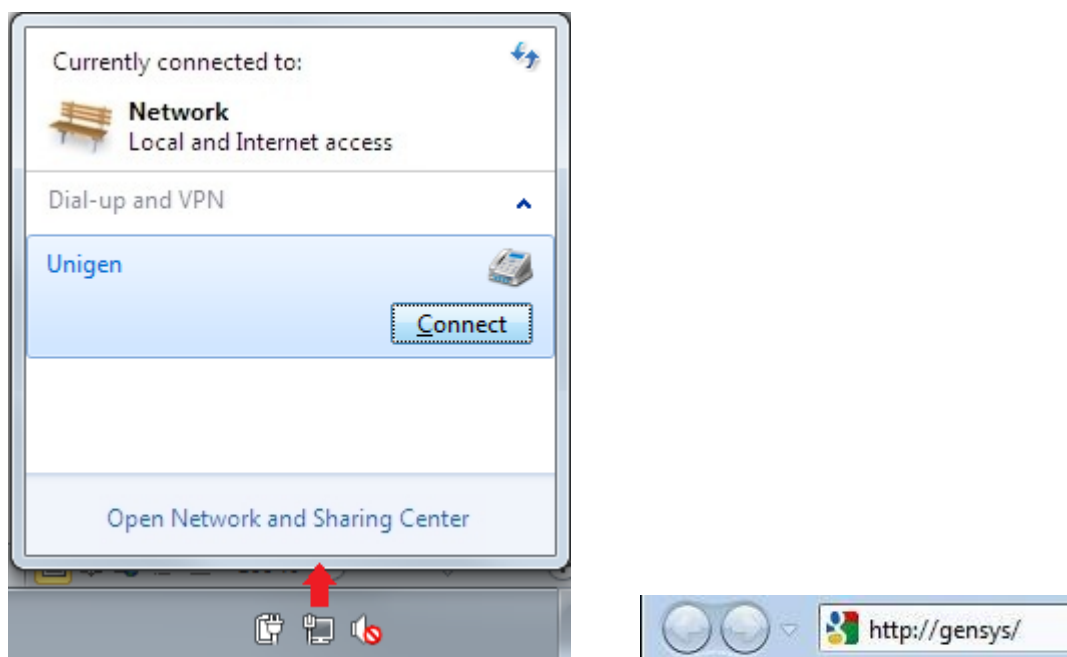
- Insert a line containing “192.168.11.1 unigen” in the hosts file as shown below and save the file.



Notepad will probably tell you that the hosts file is set as read only. Notepad will then propose you to save the file in another folder:

- Save the file on your desktop.
- Make sure Notepad has not saved it as “**hosts.txt**”. Otherwise, rename the file as “**hosts**” without any extension.
- Move this file to **C:\Windows\System32\drivers\etc\hosts** and confirm that you want to overwrite original file.

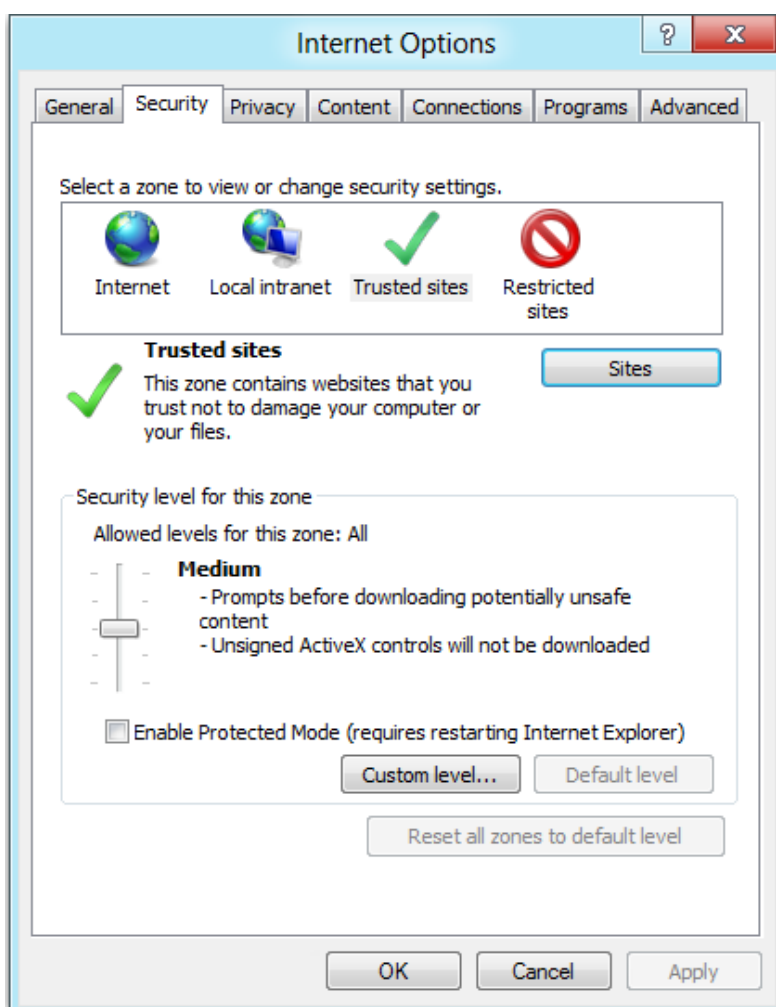
The hosts file is now updated to communicate with your product. You may now use the dial-up connection to establish a communication between your computer and your module. Then go to <http://unigen> using your Web browser to on the module’s embedded Web site.



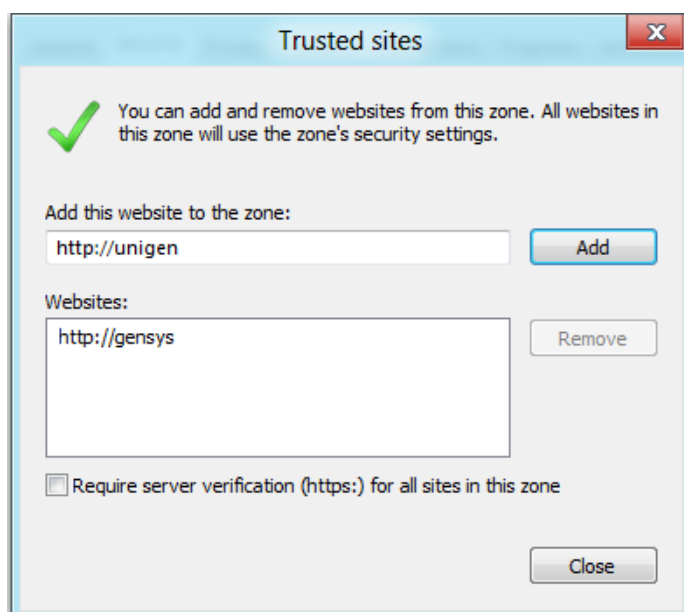
4 Setting up Internet Explorer

Depending on your Internet Explorer version and settings, you may need to perform additional steps below in order to fully setup your computer for the module's embedded Web site.

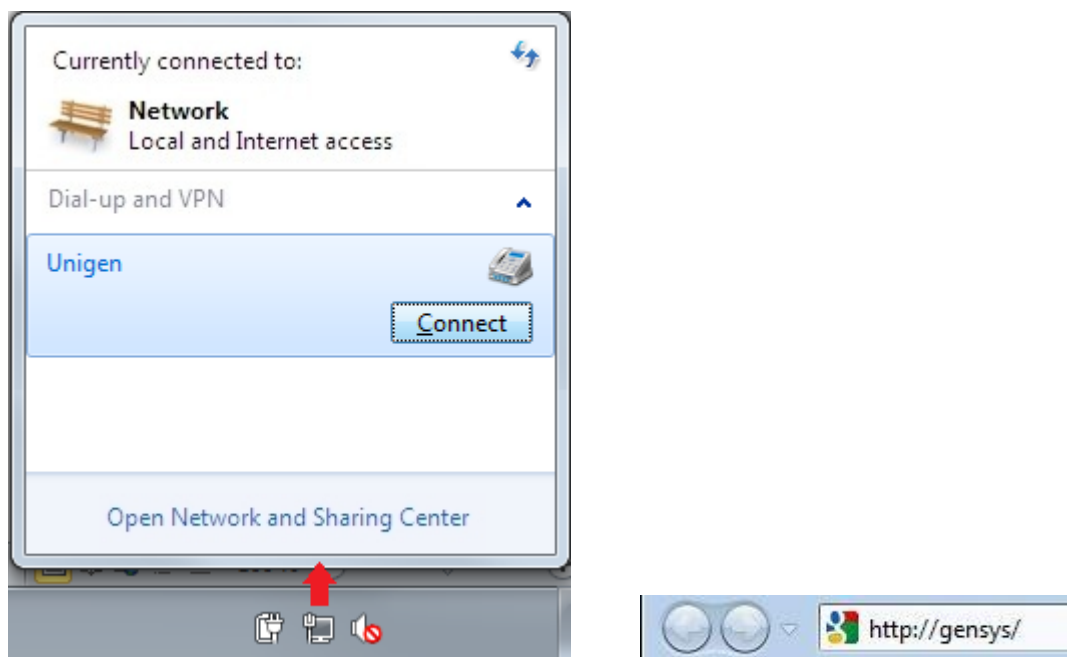
- 1) Start "**Internet Explorer**" and open "**Tools/Internet Options**".
- 2) Select "**Security**" tab and click on "**Trusted sites**" icon then click on "**Sites**" button.



- 3) Make sure the checkbox at the bottom of the window is not checked, enter URL <http://unigen> then click on "**Add**" button.



4) Restart Internet Explorer, connect using the UNIGEN dial-up connection and enter <http://unigen> into your Web browser.



5) Check that Java applets are now working correctly on the “**Information**” page of the module’s embedded Web site.

P. lines power:	156	=	0 %
Generator kW	18	=	0 kW
Generator freq:	20	=	0.00 Hz
Gen. cos(phi)	21	=	0.00 I
Bus voltage	22	=	1 v
Valid mains kW:	60	=	0 kW
Bus frequency	23	=	0.00 Hz
Mains cos(phi)	58	=	0.00 I
Engine speed	33	=	0 rpm
Batt voltage	41	=	23.9 v

Save

⇒ Your computer is now fully setup to connect to your module.

5 CRE TECHNOLOGY



130, Allée Victor Naudin
Zone des Templiers
Sophia-Antipolis
06410 Biot
FRANCE



Phone: +33 (0)4 92 38 86 82

Fax: +33 (0)4 92 38 86 83

Website: www.cretechnology.com



Email: info@cretechnology.com



Technical support: +33 (0)4 92 38 86 86 (office hours: 8.30AM-12AM / 2PM-6PM GMT+1).

Email: support@cretechnology.com



SKYPE: support-cretechnology.com

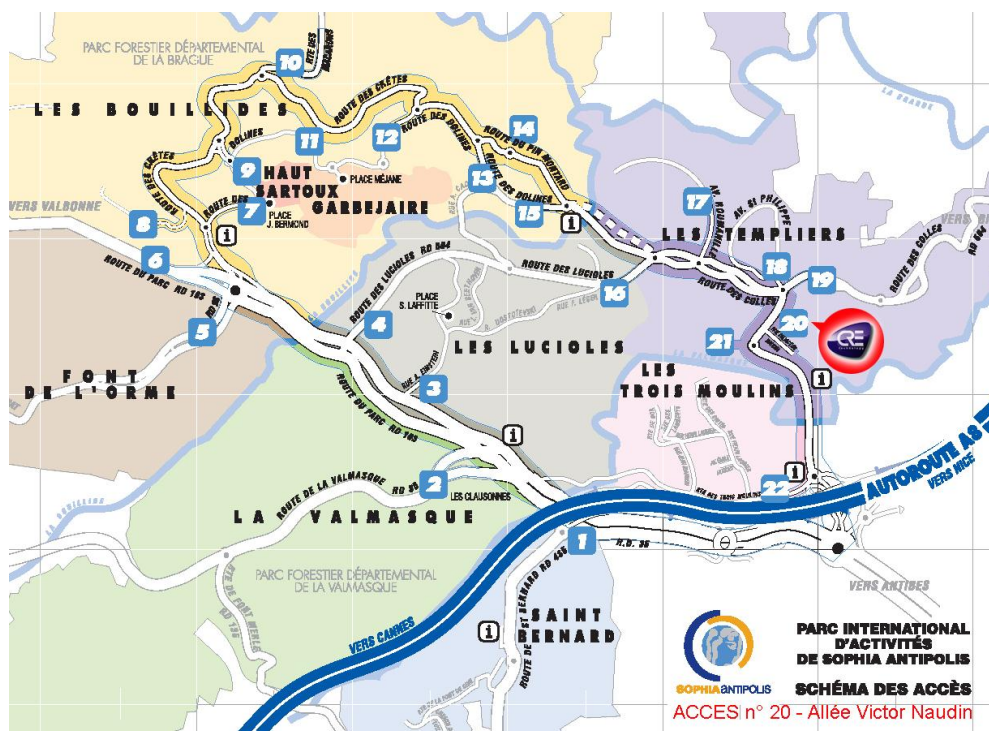


FIGURE 1 - ACCESS TO CRE TECHNOLOGY

Check our entire distributors list around the world on www.cretechnology.com tab “DISTRIBUTORS”



FIGURE 2 - CRE TECHNOLOGY DISTRIBUTORS

CRE Technology retains all copyrights in any text, graphic images, and software owned by CRE Technology and hereby authorizes you to electronically copy documents published herein solely for the purpose of transmitting or viewing the information.

© copyright
all rights reserved