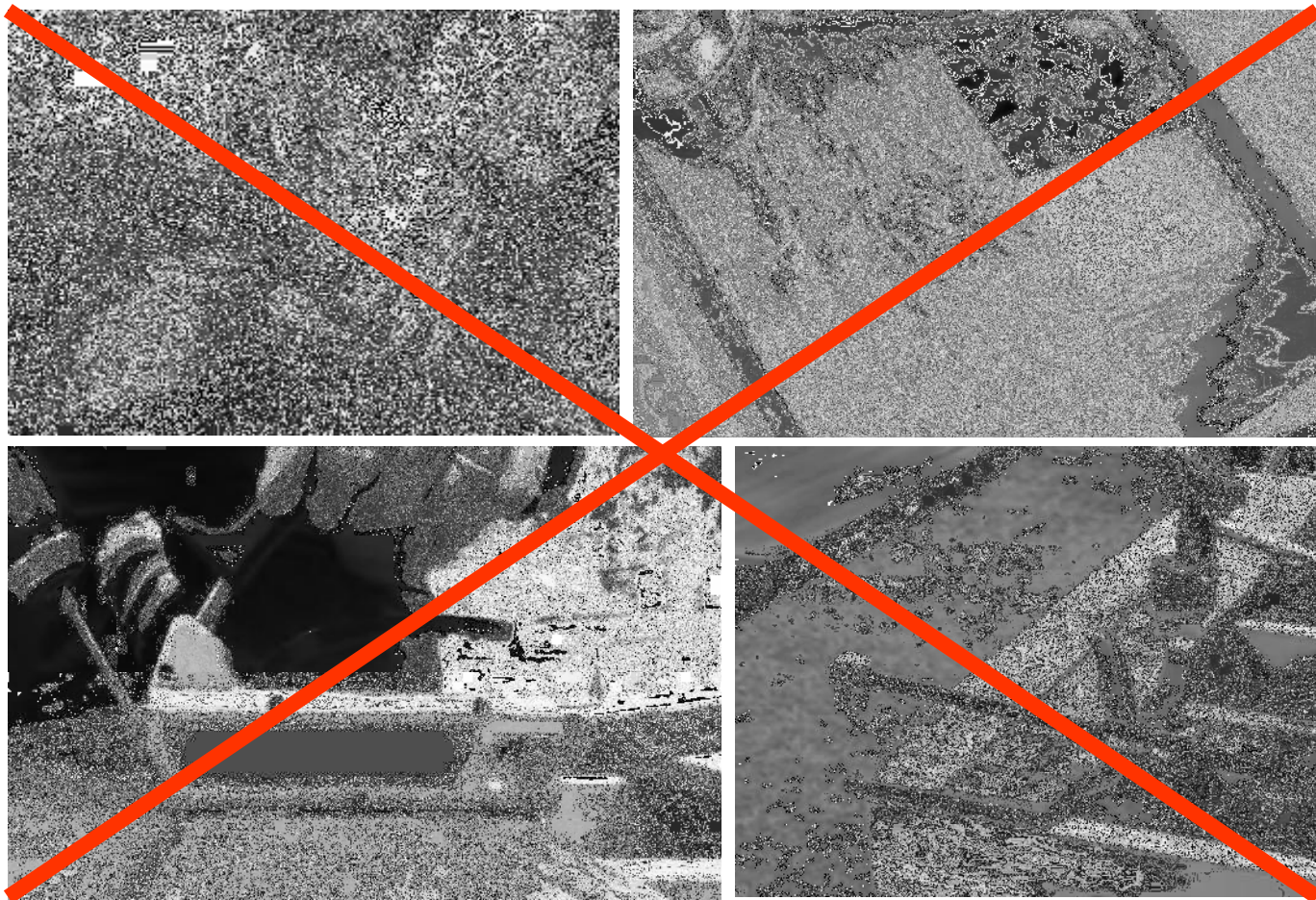


DECK-A-FLOORTM PRO

- **A patent pending** outdoor decking system
- **Three Simple Steps** to finish your professional deck
- **Simple & Fast Installation**, no need to measure the space between the boards with special design of fixed spacing between clips.
- **Almost Gapless**, gap between boards is smaller than the quarter coin. Cannot see the screw, nail, clip or even joist, and keep it safe for your family to enjoy.

Simple and Fast Installation

A Completely **NEW System** to install your decking without worrying about the gap,
no more measurement, no more tightening jack, no hole pre-drilled,
simply you can do it yourself.

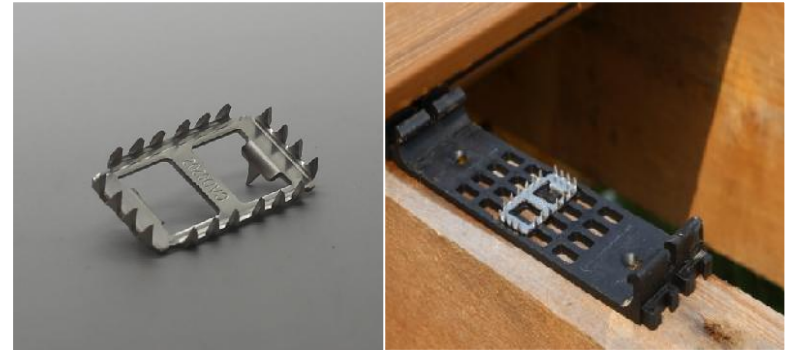


3 Simple Steps

1. Line up the first clip and fix the Pro Clips on the joist.



2. Insert a locking clip on the slot in the center of the Pro Clip.



3. Lay down the deck boards and push the boards down into the clip either by hand or by foot.



Packaging

All deck boards and parts are
packed in one box



Packaging size:

7.2 x 0.6 x 0.4 ft

2185x 178 x126 mm

Weight:

57 lb

26 kg

One box of DECK-A-FLOOR PRO contains:

- a. 4 x 6'7'' (2.05m) UltraShield Deck Boards
- b. 6 x Pro Clip
- c. 6 x Pro Clip
- d. 8 x Locking Inserts
- e. 72 x Screws
- f. 1 x Spacer
- g. 1 x Installation Guide

Area covers: 13 sq ft (1.2 sqm) per box

A close-up photograph of a wooden deck board being installed. The board is being held in place by a black plastic Pro Clip, which is attached to a wooden Joist / Deck Frame. The Pro Clip has a series of rectangular slots along its length, and a silver-colored Locking Insert is visible in one of these slots. The text 'UltraShield Deck Boards' is overlaid on the top left, 'Locking Inserts' is overlaid on the middle right, 'Pro Clip' is overlaid on the bottom right, and 'Joist / Deck Frame' is overlaid on the bottom left.

UltraShield Deck Boards

Locking Inserts

Pro Clip

Joist / Deck Frame

Product Details



a. UltraShield® Boards



Shield

Core

Its groove is engineered developed to fit in the Pro Clip perfectly

UltraShield® Advanced Capped Composite Material

has a strong & durable polymer shield wrapped the core 360 degree.

- **The Core** is made of wood fiber, PE polymer and additives .
- **The Shield** is made of special engineering grade polymer and additives with extreme low water penetration.

The Shield prevents moisture penetration inside the core, avoiding problems like:

- ✗ No Rot
- ✗ No Split & Crack
- ✗ No Fungus & Mold
- ➔ Durable and longer life span, Keeping family members healthy & safe

Moreover, as the strong and tough Shield, it gives a maximum protection with:

- ✓ Stains Resistance
- ✓ Scratch Resistance
- ✓ No need to paint
- ➔ Maintain the pleasant outlook for years to come with very low maintenance, saving a lot of time & money

b. Pro Clip

5 pieces Pro Clip pre fixed together for fast installation

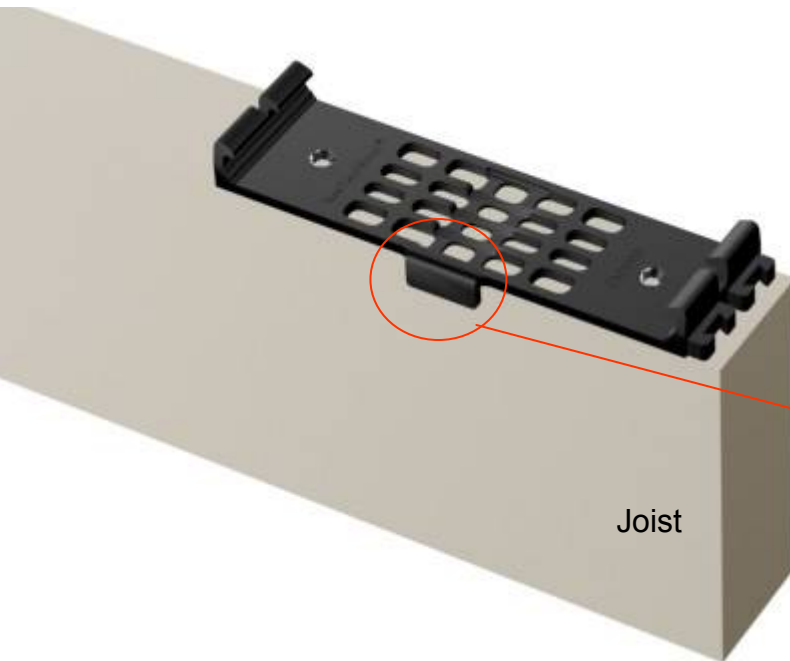


c. Pro Clip

1 piece Pro Clip for edges

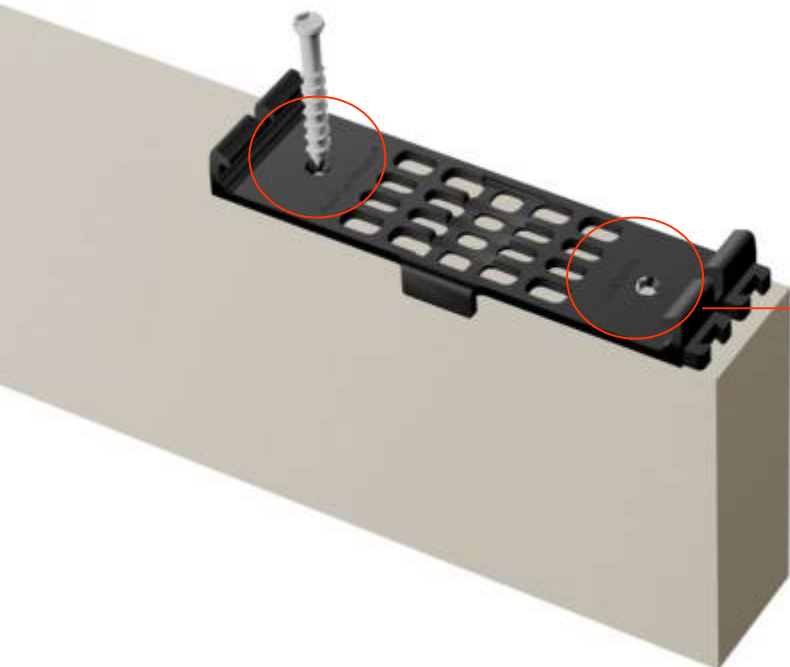


How does it works



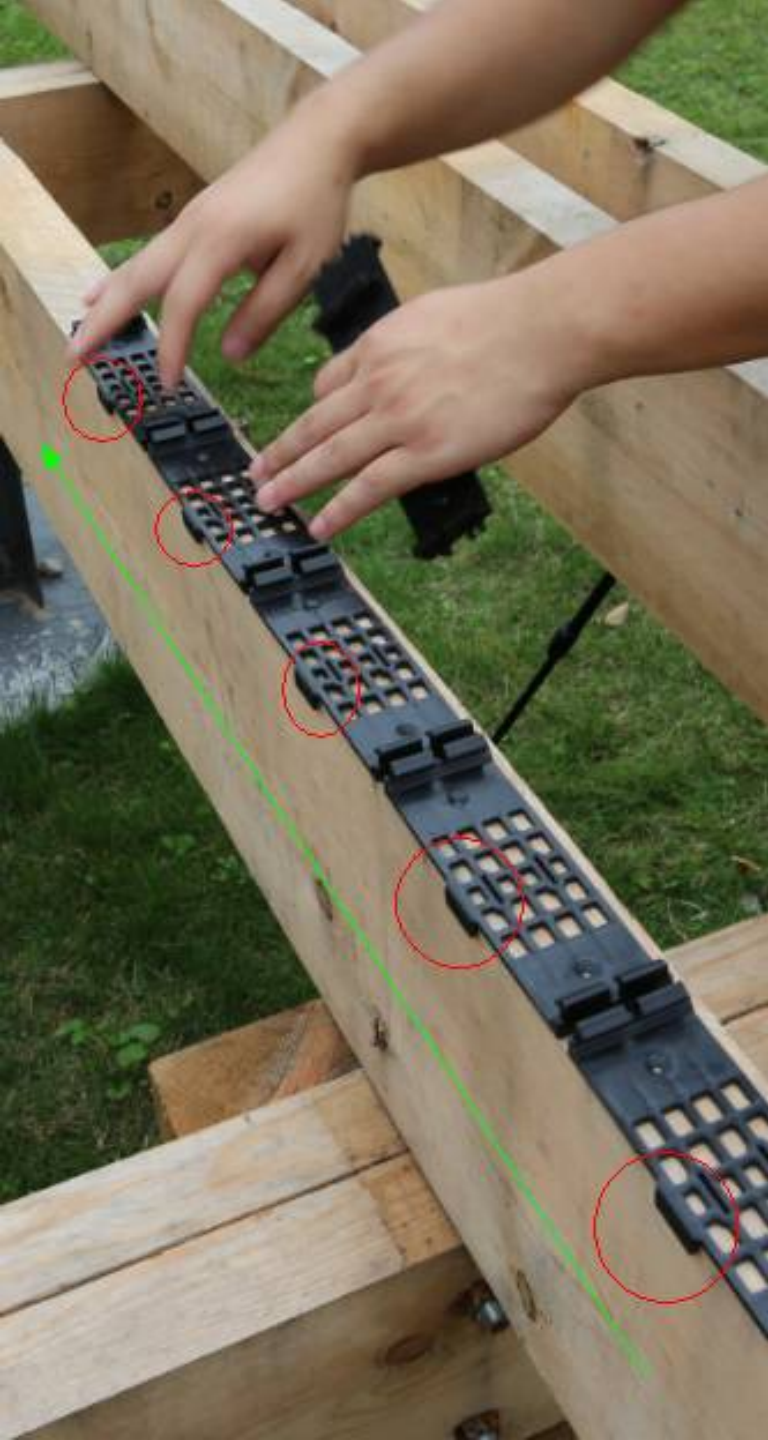
Edging bar for easy alignment

➔ Simply push the Edging Bar against the joist.



Fix 2 screws or nails on the 2 holes

➔ Three points fixing method ensured same spacing between clips for zero mistakes

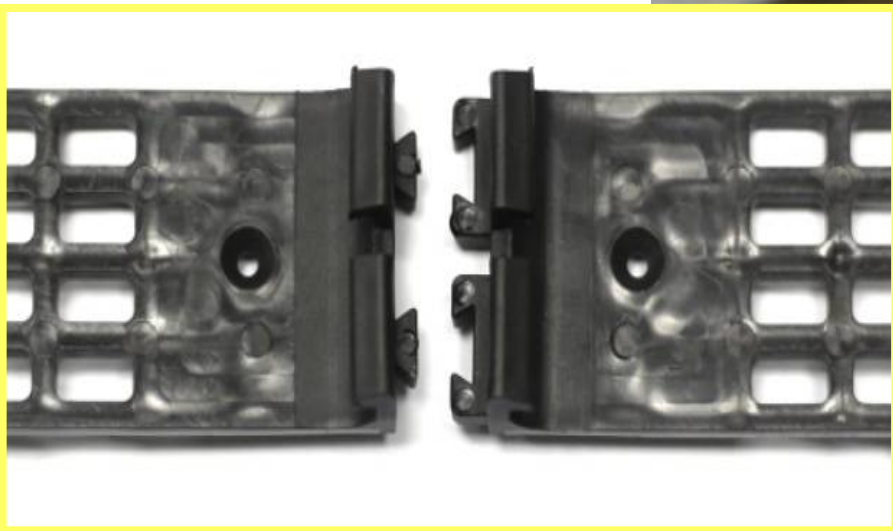
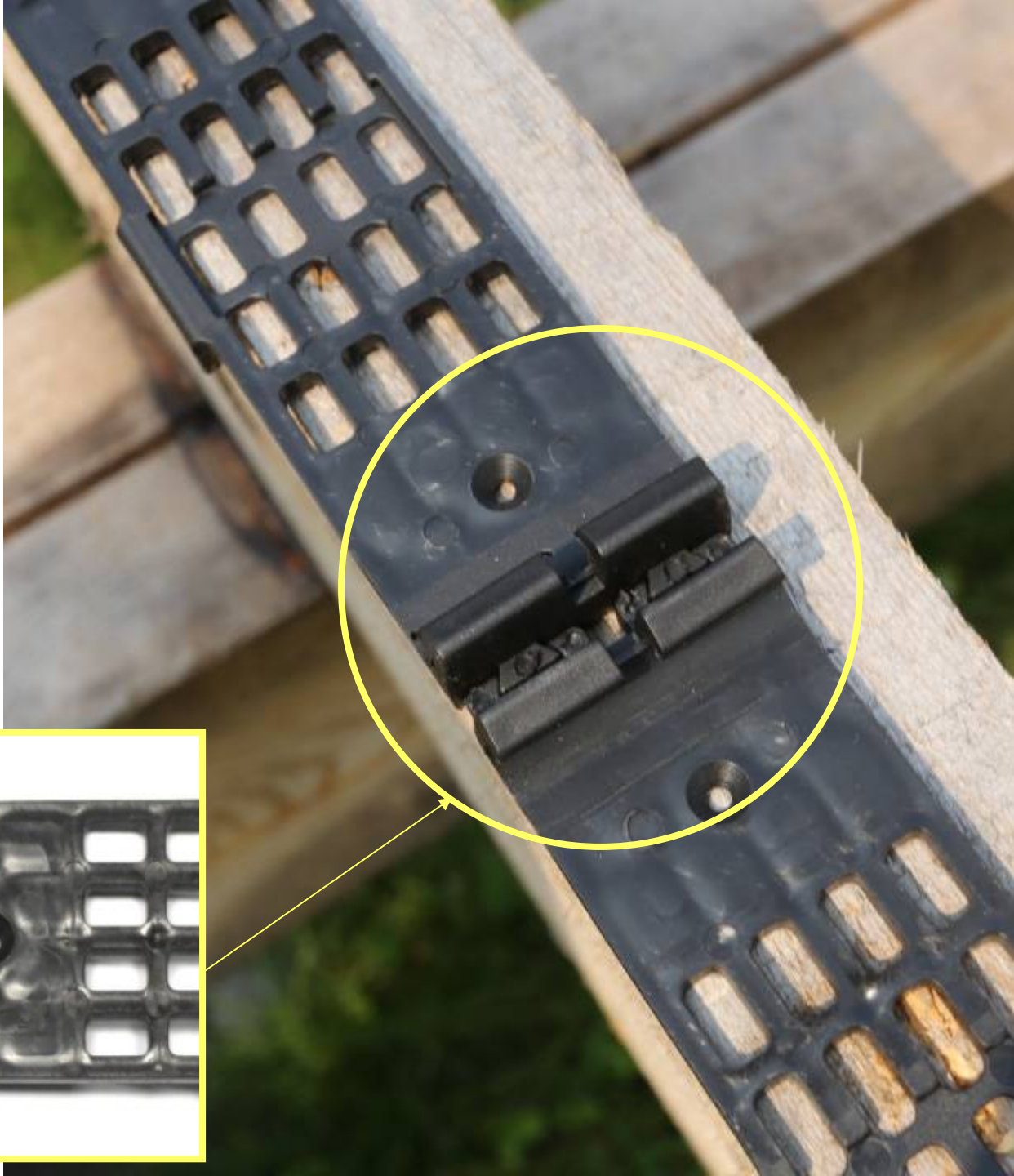




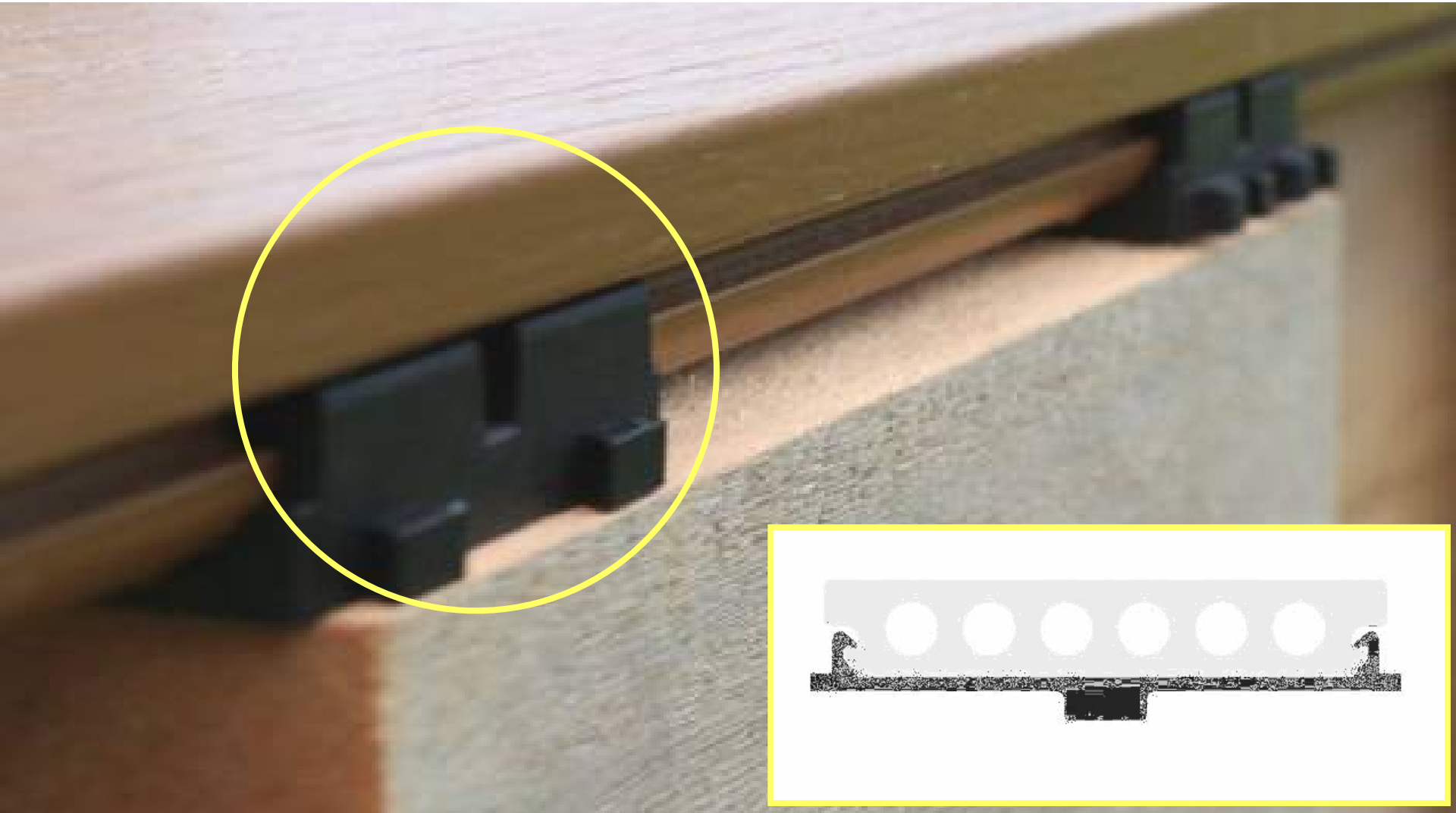


Align to either side of the joist is ok

Cone shaped insert:
for secure and
accurate connection
between Pro Clips



Decking board snaps in the Pro clip
and hold down the board securely

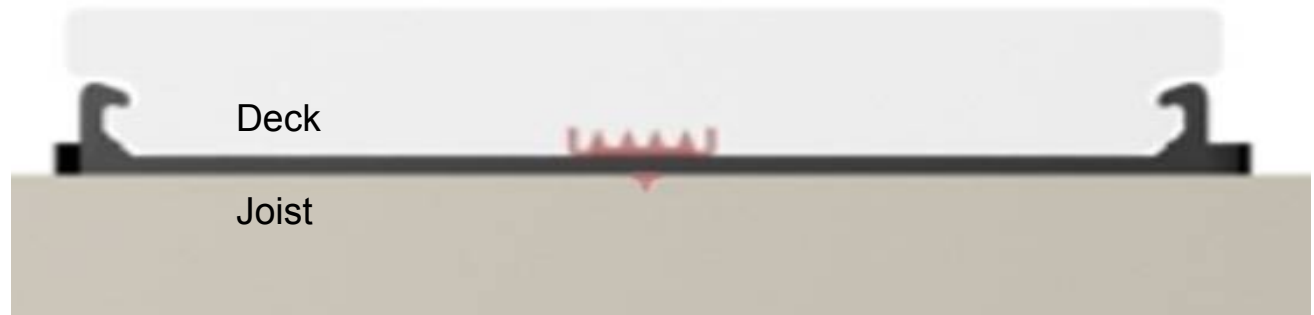




Snaps the boards into the Pro Clips.

d. Smart Locking Insert

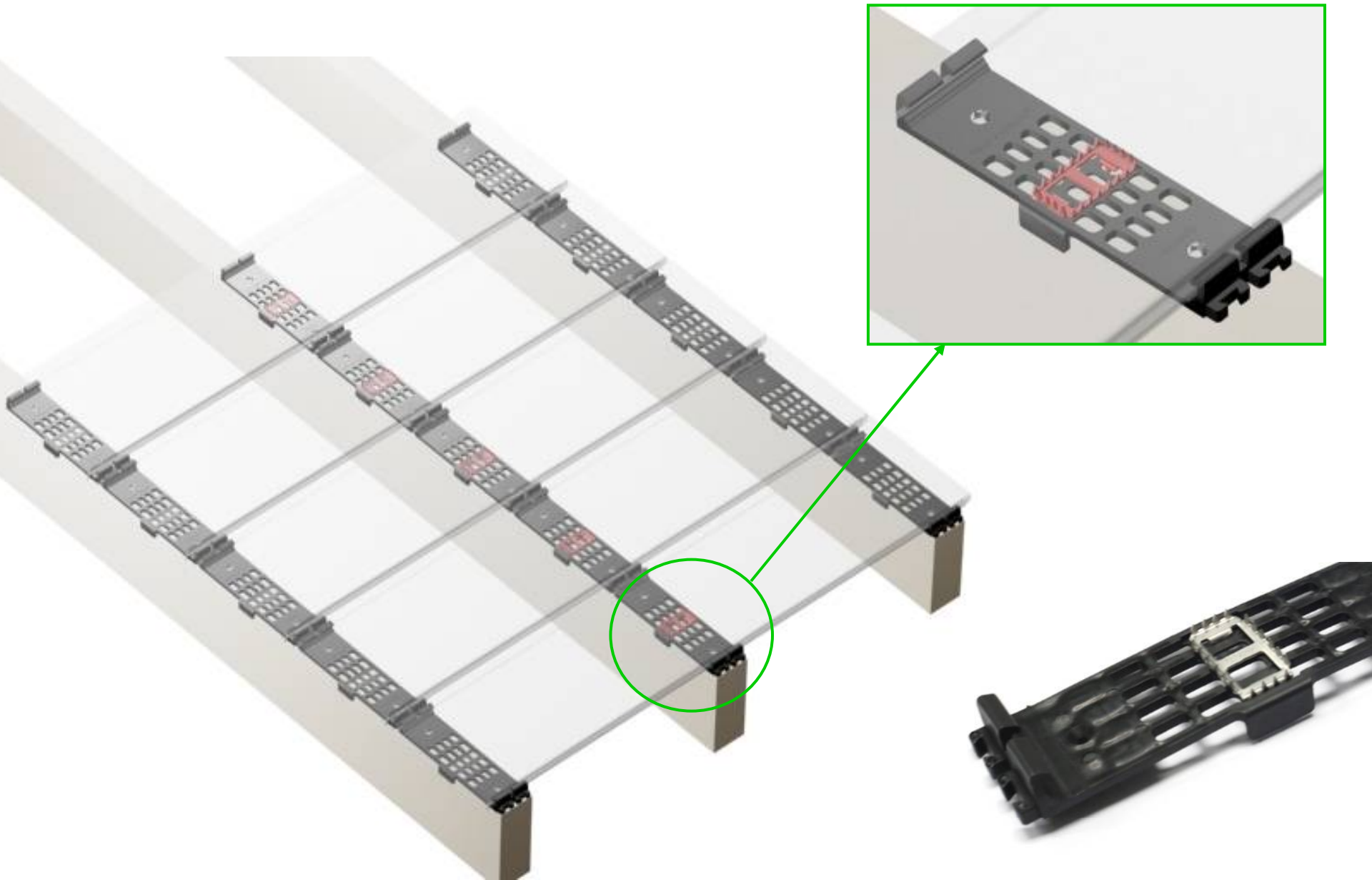
Put a locking insert on the slot in the centre of the Pro Clip.
A special design of the teeth will bite on the board firmly preventing from movement but allow the board for expansion and contraction.



Fix the locking insert
into the slot on the Pro clip



Note: Only put 1 locking insert on 1 deck board, always put it on the middle clip



e. Screws

'304 Grade' stainless screw, no corrosion in all seasons



Fixing by screws



or by nail gun to boost the installation speed
*nails or nails gun not included

f. Spacer

for even gap spacing (1mm)

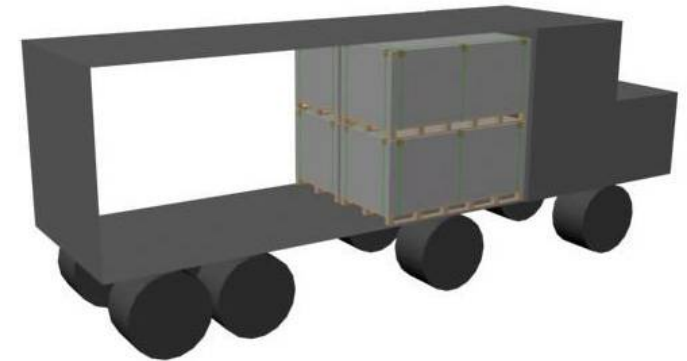
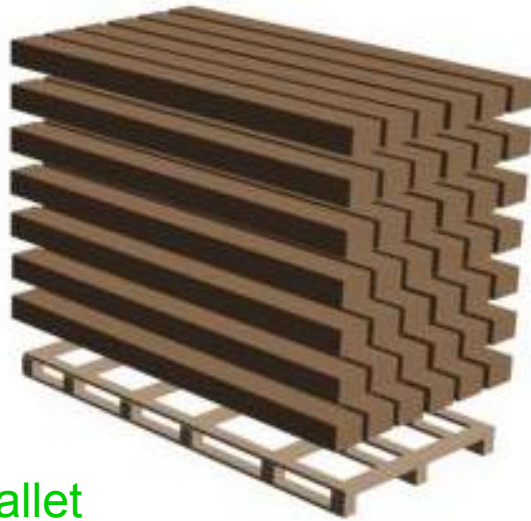
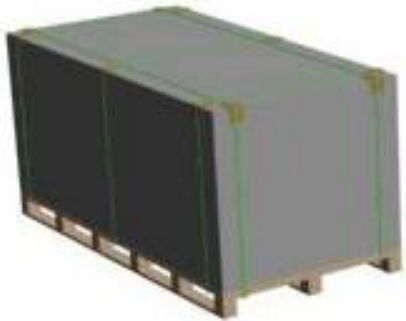


where two timbers joining together end to end

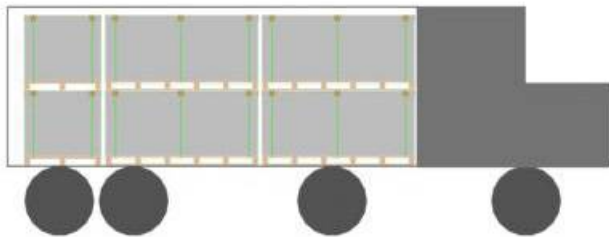


where meeting borders or edges

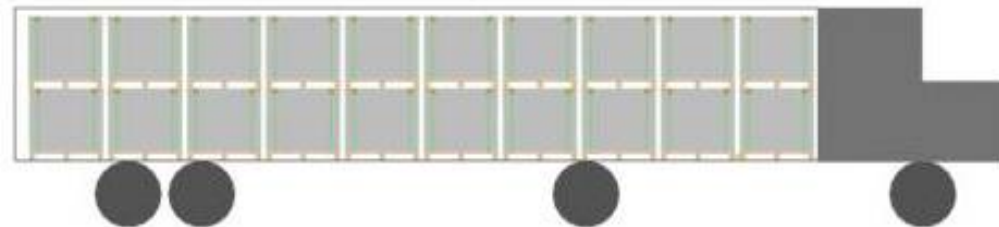
Loading info



42 boxes on one pallet



10 pallets on one 20ft



20 pallets on one 40ft