

Fire Control Panel FS5100



Fire Control Panel FS5100 is an up-to-date, high reliable, multifunctional and versatile unit, providing the user with unexpected potential in the design, installation and operation of conventional fire alarm systems.

The FS5100 is certified by EVPU.

**MORE THAN 10 DISPLAY
LANGUAGES AVAILABLE**

Technical features

Fire detection lines (2, 5 or 8):

- Maximum number of fire detectors in a line: 32
- Connecting line: two-wire
- Maximum resistance of a line: 100Ω

Monitored fire alarm lines (EN54-2, type C):

- Type: potential
- Electrical characteristics: $(24 \pm 5)V/100\text{ mA}$

Common fire relay outputs (2 or 5):

- Type: potential free, switching
- Electrical characteristics: 3 A/125 V AC;
3 A/30 V DC

Common fault warning relay outputs:

- Type: potential free, switching
- Electrical characteristics: 3 A/125 V AC;
3 A/30 V DC

Indications of registered events:

- Light indication: LEDs
- Text messages: LCD display – 1 line,
16 symbols, Latin/Cyrillic characters, backlit
- Sound: Built-in buzzer

Access levels to control functions:

- 4 (in compliance with EN 54/2)

Power supply:

- Voltage: 220/230 V
- Frequency: 50 Hz

Backup batteries:

- 2 x 12 V / 7 Ah

Operation in duty mode upon interrupted mains supply:

- Minimum configuration: 46 h
- Maximum configuration 32 h

Consumption on backup batteries supply in duty mode at 24 V:

- Minimum configuration: <150 mA
- Maximum configuration: <220 mA

Power supply to external devices:

- Voltage: $(24 \pm 5)V$
- Maximum current value (current of monitored outputs included): 1,3 A

Weight (backup batteries not included): 5,2 kg

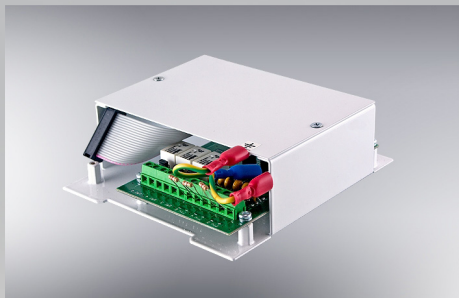
Dimensions: 445 x 327 x 87mm

Operating temperature range: -5 °C to +40 °C

Relative humidity: to 93 %

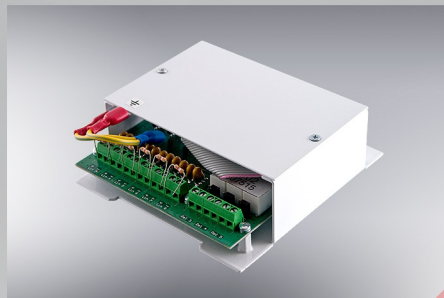
Degree of protection: IP 40

Extension modules



Extension module 5101

- 3 fire detection lines
- 3 common fire relay outputs



Extension module 5102

- 6 fire detection lines
- 3 common fire relay outputs

Interface module RS232/485

Provide communication between fire alarm control panels types FS5100, FS5200 and FS4000 with repeater type FS5200R products of UniPOS.

Possible configurations

FS 5100:

- 2 fire detection lines
- 2 monitored fire alarm lines
- 2 common fire relay outputs

FS 5100 + 5102:

- 8 fire detection lines
- 2 monitored fire alarm lines
- 5 common fire relay outputs

FS 5100 + 5101:

- 5 fire detection lines
- 2 monitored fire alarm lines
- 5 common fire relay outputs