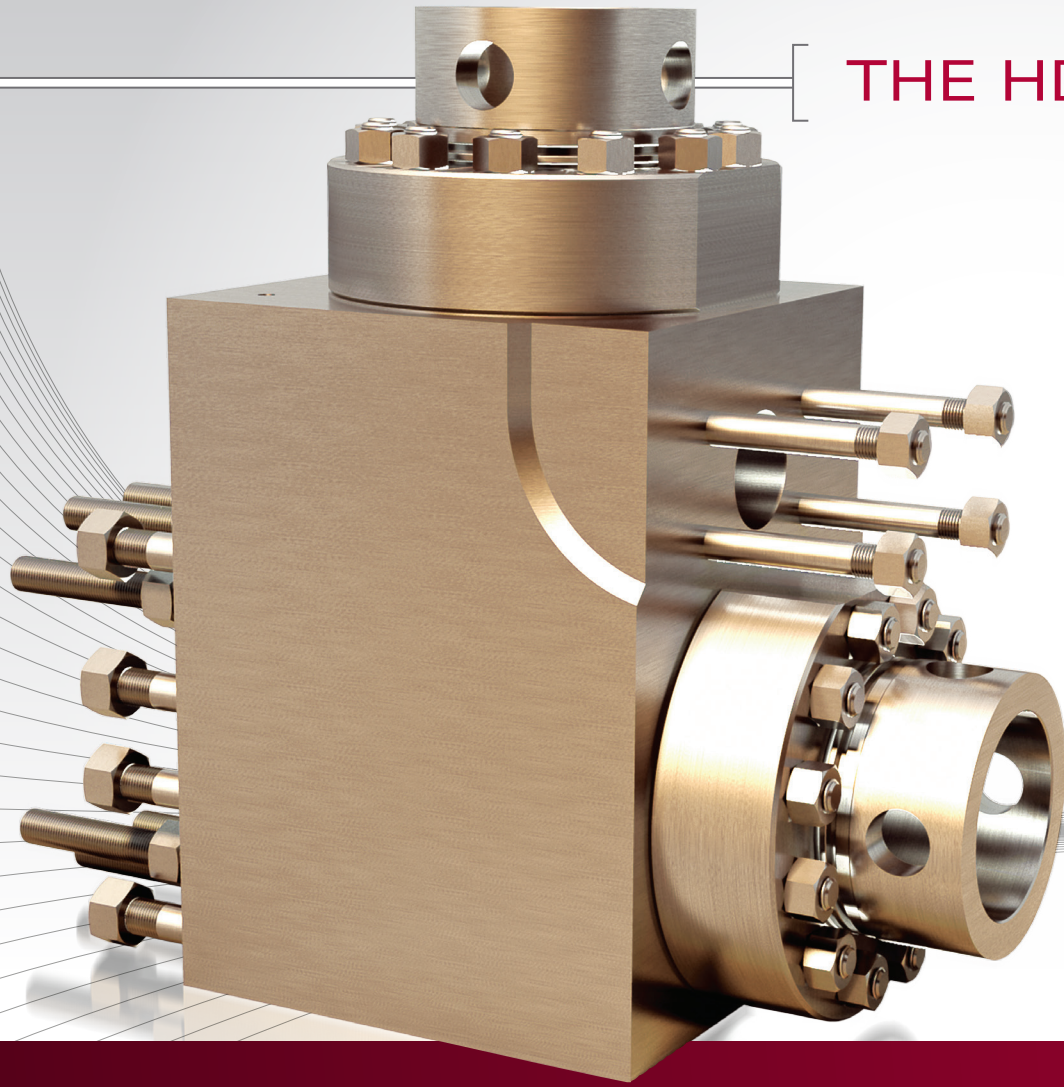


THE HD 6000 PSI Drilling Module



Piston Cylinder		Displacement				Maximum Pressure		Pump RPM	Input RPM
Diameter		Per Revolution		Per Minute		PSI	kg/cm ²		
in.	mm	gal.	lit	gal.	lit				
7	178	5.50	20.81	632	2,393	3,905	275	115	504
6.5	165	4.74	17.94	545	2,064	4,529	318		
6	152	4.04	15.29	465	1,758	5,316	374		
5.5	140	3.39	12.85	390	1,478	6,000	422		

**Gardner
Denver**
Pumping Perfected.™

THE HD 6000 PSI Drilling Module

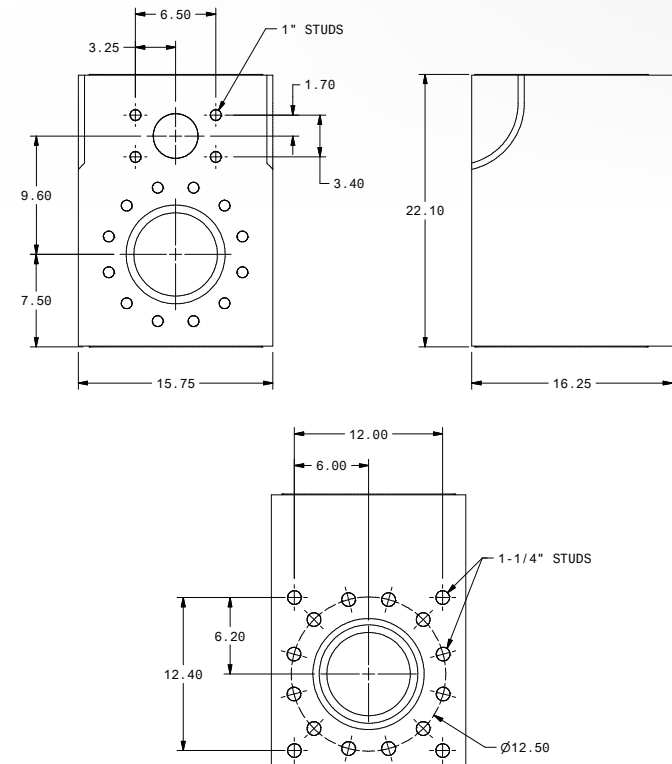


The HD 6000 PSI Drilling Module is designed for the PZL (PZ-11) pump.

STANDARD FEATURES

- Maximum rated working pressure: 6000 psi
- Individually forged, heat-treated alloy steel
- Autofrettaged module – maximizes strength, yet module can be welded to repair washouts
- Direct replacement for the current 5000 psi wide body module
 - Same outside dimensions
 - Same external and internal components except valve cover, bore seal and Falcon spring retainer
- Valve cover bore seal for improved seal performance
- Falcon technology for improved serviceability
 - Single-piece twist-in retainer
 - No fasteners required
- Improved internal geometry to minimize operating stresses
- Module designed to accommodate either Falcon or standard valve spring retainer
- DNV certifiable

SPECIFICATIONS



CONNECT WITH US :