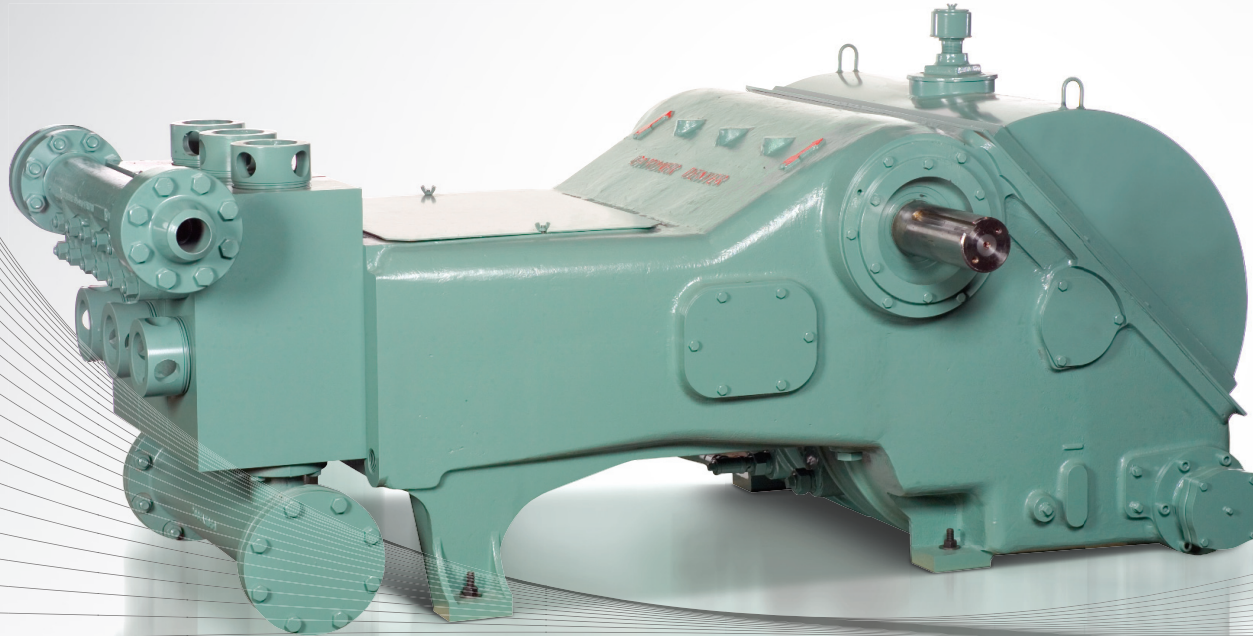


# PAH Triplex Drilling Mud Pump



*Shown with optional skid.*

## SPECIFICATIONS

|               |                        |
|---------------|------------------------|
| Maximum Input | 275 BHP (205 kw)       |
| Maximum RPM   | 175 RPM                |
| Stroke Length | 8" (203mm)             |
| Piston Load   | 22,030 lbs. (97,994 N) |
| Pump Weight   | 9,250 lbs. (4,196 kg)  |
| Gear Ratio    | 4.7:1                  |

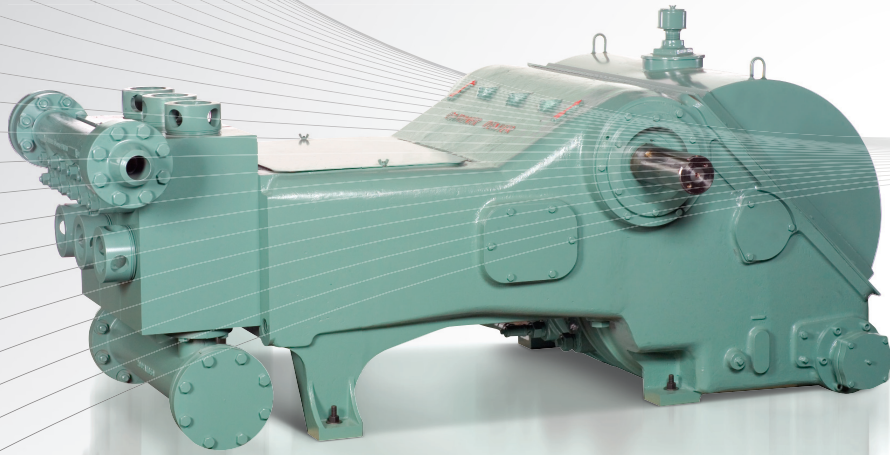
| PISTON/PLUNGER CYLINDER |     | DISPLACEMENT – DRILLING SERVICE |        |                   |      | MAXIMUM PSI |     | PUMP RPM | JACKSHAFT RPM |
|-------------------------|-----|---------------------------------|--------|-------------------|------|-------------|-----|----------|---------------|
| DIAMETER                |     | PER REVOLUTION                  |        | MAXIMUM FLOW RATE |      | PSI         | bar |          |               |
| inch                    | mm  | gallon                          | liters | GPM               | LPM  |             |     |          |               |
| 5*                      | 127 | 2.04                            | 7.72   | 357               | 1351 | 1122        | 77  | 175      | 823           |
| 4.5                     | 114 | 1.65                            | 6.25   | 289               | 1095 | 1385        | 96  |          |               |
| 4                       | 102 | 1.31                            | 4.94   | 228               | 865  | 1753        | 121 |          |               |
| 3.5                     | 89  | 1.00                            | 3.78   | 175               | 662  | 2290        | 158 |          |               |
| 3.25                    | 83  | .86                             | 3.26   | 151               | 571  | 2656        | 183 |          |               |
| 3                       | 76  | .7                              | 2.78   | 129               | 486  | 3117        | 215 |          |               |

Weight: Complete pump with large skid - 9,850 pounds. Ratings are based on 90% mechanical efficiency and 100% volumetric efficiency.

\*Five inch size available in piston and liner construction only.

**Gardner**  
**Denver**  
**Pumping Perfected.™**

# PAH Triplex Drilling Mud Pump



Standard Drilling Pump Configuration shown.  
Other motor configurations available.

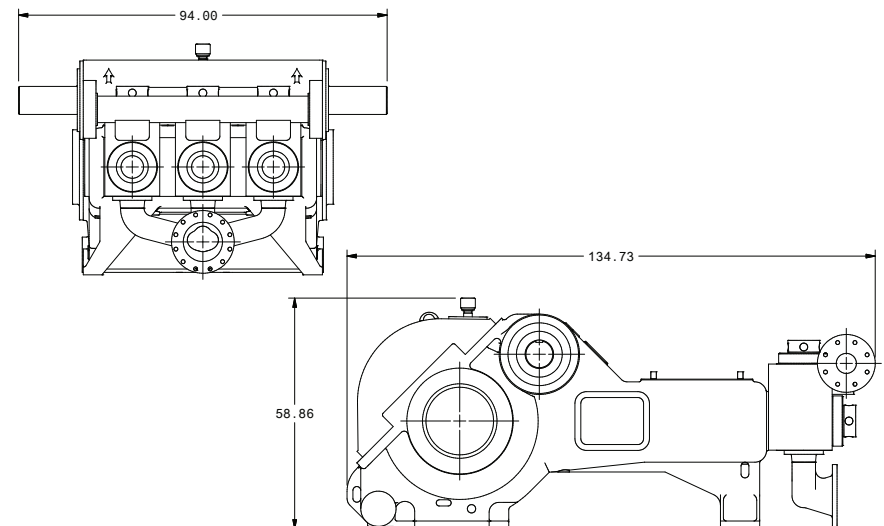
## OPTIONAL FEATURES

- Pistons and liners or plungers and packing
- Oil heat exchanger cooling system
- Fabricated steel skid under pump only
- External electric-powered lube pump
- Centrifugal suction charging pump
- Custom packaging available
- Suction and/or discharge dampeners

## STANDARD FEATURES

- Nodular iron power frame, eccentric, connecting rods, and crossheads
- Heat-treated alloy steel, interchangeable fluid cylinders
- Spherical roller bearings carry eccentric
- Center-guided valves and seats with urethane insert
- Double-extended Jackshaft carried on heavy-duty straight roller bearings
- Replaceable-type element oil filter and oil pressure gauge
- Dual roller-bearing connecting rod
- Threaded valve covers
- 4140 alloy steel main gears are bolted to the eccentric
- Clamp connection between plated piston rod and extension rod
- Full splash lubrication, with oil pump to feed working parts
- Complete piston washing and lubrication system

## SPECIFICATIONS



## CONNECT WITH US: