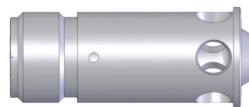
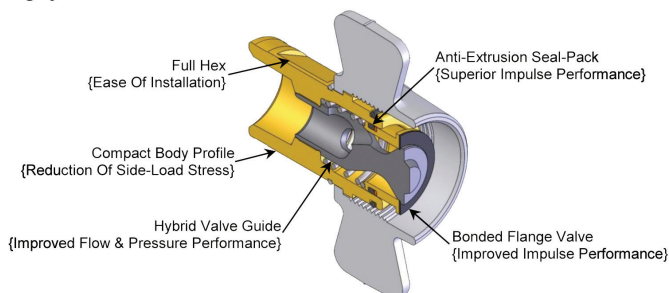




The Right Connection®

W-Series

Wingstyle Socket Features

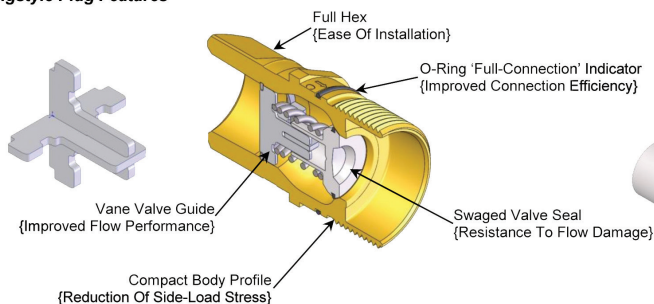


Industry 'Norm' Tubular Valve Guide
Versus
Hybrid Valve Guide



NEW
1/4" and 3/8"
body sizes

Wingstyle Plug Features



Applications:

- Oil field equipment, dump and live floor trailers, mobile equipment, submersible pumps

Sizes:

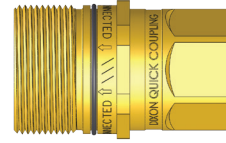
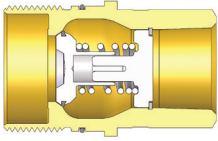
- 1/4" - 1 1/2"

Features:

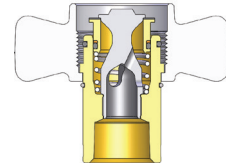
- Innovative hybrid valve design provides industry leading flow and pressure performance
- Bonded flange valve and anti-extrusion seal-pack improves impulse performance
- Full hex on both bodies for easy installation
- Compact body profile
- O-ring connection indicator
- Interchangeable with Eaton 5100-Series, Parker 6100-Series, Snap-Tite 78-Series and other compatible models

Materials:

- Brass body with steel wing nut or hex nut
- 1" body size available in all steel construction
- Dust caps and dust plugs: steel body with stainless steel cable lanyard



| Body Size | Part Detail | | | Length | | Maximum OD | | Flats |
|-----------|-------------|--------------------|----------|--------|-------|------------|-------|-------|
| | Part Number | Threads | Material | Inch | mm | Inch | mm | Inch |
| 1/4" | 2WF1-B | 1/8"-27 NPTF | Brass | 2.00 | 50.8 | 3.00 | 76.2 | .63" |
| 3/8" | 3WF2-B | 1/4"-18 NPTF | Brass | 2.33 | 59.2 | 3.45 | 87.6 | .81" |
| 3/8" | 3WF3-B | 3/8"-18 NPTF | Brass | 2.33 | 59.2 | 3.45 | 87.6 | .81" |
| 3/4" | 6WF4-B | 1/2"-14 NPTF | Brass | 3.09 | 78.5 | 4.06 | 103.1 | 1.15" |
| 3/4" | 6WBF4-B | 1/2"-14 BSPP | Brass | 3.09 | 78.5 | 4.06 | 103.1 | 1.15" |
| 3/4" | 6WF6-B | 3/4"-14 NPTF | Brass | 3.09 | 78.5 | 4.06 | 103.1 | 1.15" |
| 3/4" | 6WBF6-B | 3/4"-14 BSPP | Brass | 3.09 | 78.5 | 4.06 | 103.1 | 1.15" |
| 1" | 8WF8-B | 1"-11 1/2 NPTF | Brass | 3.78 | 96.0 | 4.45 | 113.0 | 1.44" |
| 1" | 8WF8 | 1"-11 1/2 NPTF | Steel | 3.78 | 96.0 | 4.45 | 113.0 | 1.44" |
| 1" | 8WBF8-B | 1"-11 BSPP | Brass | 3.78 | 96.0 | 4.45 | 113.0 | 1.44" |
| 1 1/4" | 10WF10-B | 1-1/4"-11 1/2 NPTF | Brass | 3.97 | 100.8 | 5.20 | 132.1 | 1.78" |
| 1 1/4" | 10WBF10-B | 1-1/4"-11 BSPP | Brass | 3.97 | 100.8 | 5.20 | 132.1 | 1.78" |
| 1 1/2" | 12WF12-B | 1-1/2"-11 1/2 NPTF | Brass | 4.08 | 103.6 | 5.35 | 135.9 | 2" |
| 1 1/2" | 12WBF12-B | 1-1/2"-11 BSPP | Brass | 4.08 | 103.6 | 5.35 | 135.9 | 2" |



| Body Size | Part Detail | | | Length | | Maximum OD | | Flats |
|-----------|-------------|--------------------|----------|--------|-------|------------|-------|-------|
| | Part Number | Threads | Material | Inch | mm | Inch | mm | Inch |
| 1/4" | 2WF1-B | 1/8"-27 NPTF | Brass | 2.00 | 50.8 | 3.00 | 76.2 | .63" |
| 3/8" | 3WF2-B | 1/4"-18 NPTF | Brass | 2.33 | 59.2 | 3.45 | 87.6 | .81" |
| 3/8" | 3WF3-B | 3/8"-18 NPTF | Brass | 2.33 | 59.2 | 3.45 | 87.6 | .81" |
| 3/4" | 6WF4-B | 1/2"-14 NPTF | Brass | 3.09 | 78.5 | 4.06 | 103.1 | 1.15" |
| 3/4" | 6WBF4-B | 1/2"-14 BSPP | Brass | 3.09 | 78.5 | 4.06 | 103.1 | 1.15" |
| 3/4" | 6WF6-B | 3/4"-14 NPTF | Brass | 3.09 | 78.5 | 4.06 | 103.1 | 1.15" |
| 3/4" | 6WBF6-B | 3/4"-14 BSPP | Brass | 3.09 | 78.5 | 4.06 | 103.1 | 1.15" |
| 1" | 8WF8-B | 1"-11 1/2 NPTF | Brass | 3.78 | 96.0 | 4.45 | 113.0 | 1.44" |
| 1" | 8WF8 | 1"-11 1/2 NPTF | Steel | 3.78 | 96.0 | 4.45 | 113.0 | 1.44" |
| 1" | 8WBF8-B | 1"-11 BSPP | Brass | 3.78 | 96.0 | 4.45 | 113.0 | 1.44" |
| 1 1/4" | 10WF10-B | 1-1/4"-11 1/2 NPTF | Brass | 3.97 | 100.8 | 5.20 | 132.1 | 1.78" |
| 1 1/4" | 10WBF10-B | 1-1/4"-11 BSPP | Brass | 3.97 | 100.8 | 5.20 | 132.1 | 1.78" |
| 1 1/2" | 12WF12-B | 1-1/2"-11 1/2 NPTF | Brass | 4.08 | 103.6 | 5.35 | 135.9 | 2" |
| 1 1/2" | 12WBF12-B | 1-1/2"-11 BSPP | Brass | 4.08 | 103.6 | 5.35 | 135.9 | 2" |

connect with us on



Dixon Quick Coupling

2925 Chief Court • Dallas, NC 28034
ph 800.839.8980 • fx 800.839.9022

dixonvalve.com

Made in the USA

