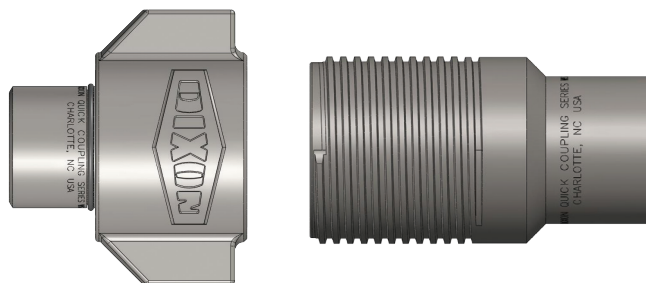




The Right Connection®

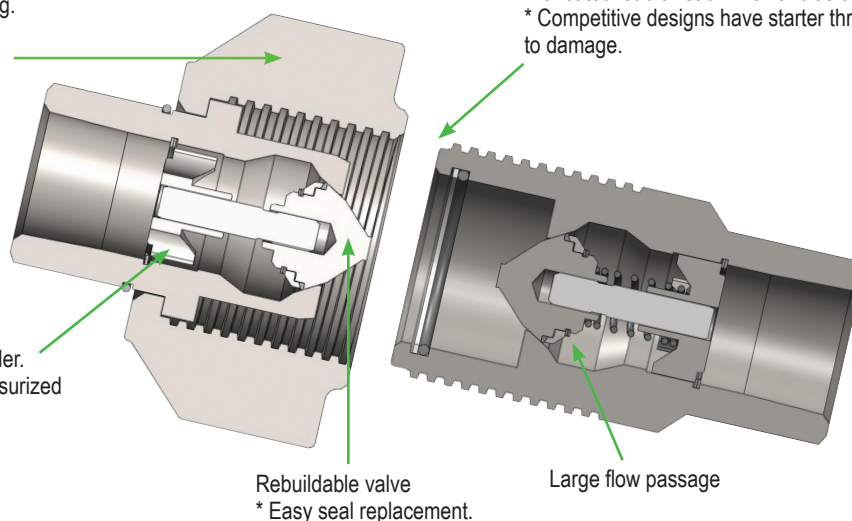
WS Series High Pressure Wingstyle



Product Options:	NPTF, BSPP and ORB Blowout prevention (BOP) models
Seal Material Options:	Nitrile, FKM, EPDM, Silicone, Kalrez®
Size:	3/4" - 2"
Body Materials:	Steel and 316 stainless steel
Standards:	Det Norske Vertias (DNV) Compliance for coupling applications Lloyds Certificate NAO 0601041/1 API 16D BOP Service (700°C flame for 5 minutes)
Interchange:	Snap-Tite 75 Series, Hydraulics Incorporated 5TV Series, Stucchi VOF, Faster OGV
Markets and Uses:	Oil rigs (hydraulic supply lines, blow out prevention, pipe spinners, top drives) Construction (pile drivers, tampers, hydraulic hammers) Offshore (supply reels, platform jack-up systems, water pump systems)
Features:	5000 PSI working pressure for steel, 3000 PSI working pressure for 316 stainless Blow out prevention safety coupling for oil rig BOP systems Aluminum dust caps / plugs with stainless bead chain View ports available on request (except for BOP models) Steel componentry plated using ROHS Compliant Trivalent Chrome Truncated lead threads to avoid drop damage Durable cast ductile iron wing Main valve seal is housed to improve seal integrity during pressured connection and disconnection

Durable cast ductile iron wing. Some competitive designs have welded wings, creating thin break points and weakening the threaded sleeve.

Heavy duty 'spider' valve holder.
* Resists surge flow and pressurized connections.



Rebuildable valve
* Easy seal replacement.

Truncated lead thread which avoids damage when dropped.
* Competitive designs have starter threads that are susceptible to damage.

Large flow passage

Dixon Quick Coupling

2925 Chief Court • Dallas, NC 28034 • ph 877.963.4966 • fx 800.839.9022

dixonvalve.com

Printed in the USA