



120MPa

Super High Pressure Coriolis Flow Meter



Super high pressure hydrogen dispenser for FCV comes of age.

- ◆ Operating pressures up to 120MPa.
- ◆ Exceptionally broad flow range (2.4 to 300kg/h): this single unit can refuel heavy buses.

■ GENERAL PERFORMANCE

Item	Description
Flow range	2.4 to 300kg/h
Accuracy	±0.05% of full scale (2.4 to 9.6kg/h)
	±0.5% of reading (9.6 to 300kg/h)

■ GENERAL SPECIFICATIONS

● Sensor Unit

Item	Description
Model	CA004 ^L _G 13XX2 □ □ □ □ □ ^{1 3} _{2 4}
Nominal size	9/16"
Process connection	High pressure cone & Thread connection: size 9/16 562C
Material	Wetted parts
	Housing
	XM-19 SUS304
Applicable fluids	Liquid and Gas
Operating temp. range	-40 to +130°C
Max. operating pressure	120MPa
Explosionproof configuration	ATEX/IECEX II2G Ex ib IIC T3, T4 Gb TIIS Exia IIC T1 *
Weight	20kg approx.

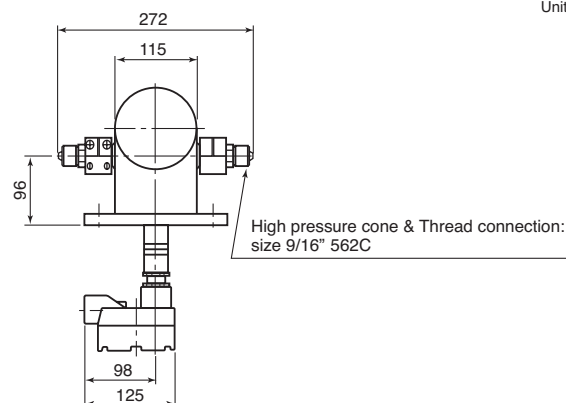
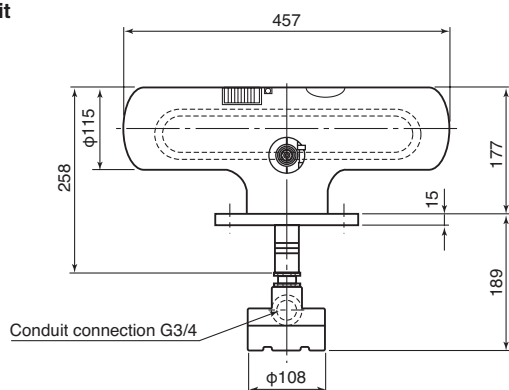
* Transmitter will be rack-mount type (MT9431).

● Transmitter

Item	Description
Model	PA0K
Power source	85 to 264VAC 50/60Hz, or 20 to 30VDC
Power consumption	15W max.
Ambient temperature	-40 to +55°C
Transmission length	200m max. (Dedicated cable used)
Explosionproof configuration	ATEX/IECEX II2G Ex d [ib] IIC T6 Gb
Installation	Remotely mounted
Finish	Sensor: Munsell 10B8/4, Covers (front and rear): 2.5PB4/10
Weight	5kg approx.
Pulse output	Open collector output (10V min. to 30Vmax., 50mA DC), or Voltage pulse ("Low Level" : 1.5V max. "High Level" : 15V min., Output impedance 2.2kΩ), Setting range: 0.1 to 10000Hz (max. output 11000Hz)
Analog output	4 to 20mADC (max. load 600Ω) Select two outputs from instant flowrate (mass or volume) temperature.
Status output	Open collector output (Max.30V, 50mADC) Select one output from error, flow direction, or high/low alarm (default is error)
Status input	Contact-closure input (Form "a" contact) Short: 200Ω max., Open: 100kΩ min. Select one output from remote zero, total reset, 0% signal lock, or function off (default is function off).

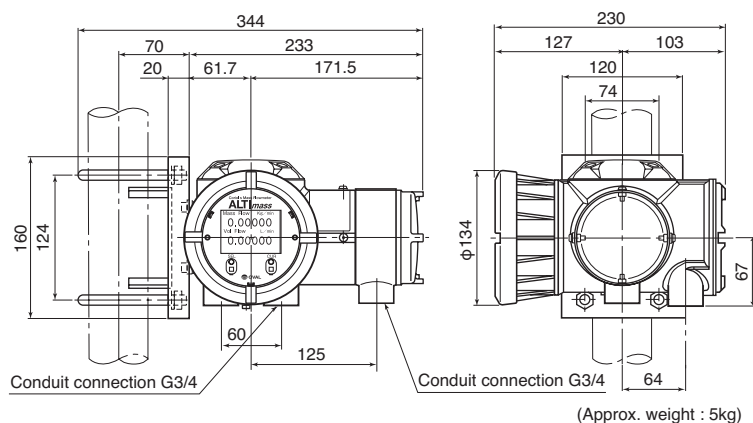
■ DIMENSIONS

● Sensor unit



Unit in : mm

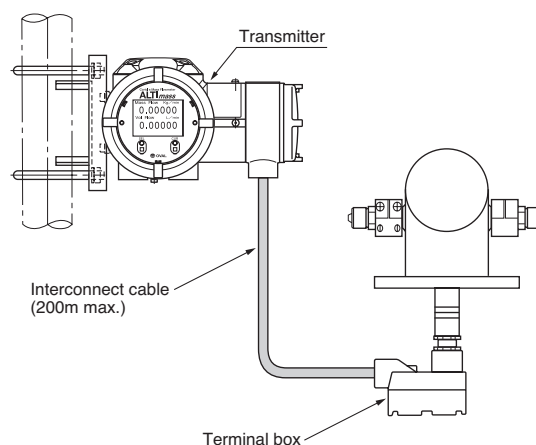
● Transmitter



*: While stanchion mounting hardware is furnished as standard accessory,
the customer is to furnish the stanchion.

■ WIRING

● Between Sensor Unit and Transmitter



The specification as of August, 2015 is stated in this catalog. Specifications and design are subject to change without notice.



OVAL Corporation

3-10-8 Kamiochiai, Shinjuku-ku, Tokyo 161-8508
Phone: +81 3-3360-5121 FAX: +81 3-3365-8605

<http://www.oval.co.jp/english>

