

Clamps & Vices

AXMINSTER Trade Clamps

Axminster Trade Clamps The clamps that trade use

What are our clamps made from and why?

Within this section, clamps come in a variety of materials. Steel in one form or another predominates. So why use one type of steel rather than another? Clamps in particular exert considerable force. The clamp has to withstand these forces without breaking, bending or permanently deforming. A clamp that fails under load or ends up distorted is no use to anyone.

Cold Drawn Steel

This is generally used when referring to the bars of sash and F clamps. Hot rolled steel bar would be cheaper and easier to use. However, steel bar reduced at room temperature by pulling (drawn) through an oil-lubricated die is superior in many ways. Cold working changes the properties of the metal, importantly giving it greater tensile and yield strength. The dimensions are easy to control with tolerances at least five times more accurate over hot rolled steel. There is guaranteed consistency and straightness. Pulling the bars through the die, orientates the grain within the metal. It becomes harder and the surface finish improves.

Forged Steel

Forged steel has many advantages over cast iron. Weight for weight a forged steel clamp is far stronger than a cast or machined clamp. The grain is continuous throughout the structure, following the shape of the clamp. Hot forged steel is also not work hardened, allowing the use of a more controlled hardening process. The forging process used to make our clamps uses an induction heating process. A combination of dies and pressings then create the required shape with a very high degree of accuracy. Induction heating can target an area that needs its shape changing, such as a bend. The strength and reliability of a forged steel clamp gives it the ability to exert the maximum clamping pressure time after time, with no misalignment of the frame.

Ductile Iron

Where a casting is used, then ductile iron is a better choice. It has much greater impact and fatigue resistance over grey cast iron. It possesses high strength and resistance to shock. The improved mechanical properties increase its resistance to breakage from physical load or if accidentally dropped onto the workshop floor. Its wear resistance is comparable to some of the best grades of steel and it is superior to grey iron. All this makes it an economical choice for many applications.

Axminster Wall Mounted G Clamp Rack

- Rack takes up to 10 clamps
- Slots ensure quick and easy access
- Suitable for clamps up to 250mm (10")
- Made in 16-gauge steel with a painted finish
- 420mm long by 70mm high, pre-drilled for fixing



Clamps not included

	Inc.vat	Ex.vat	Code
Wall Mounted G Clamp Rack	£14.46	£12.05	952968



G Clamp

Axminster G clamps are drop forged from quality steel with extra webs at the stress points. Each features a strong rolled thread steel screw, live clamping pad and a tommy bar with which to apply pressure. **Lifetime guarantee.**

- 25 x 72mm – 250kg max clamping pressure
- 50 x 30mm – 270kg max clamping pressure
- 75 x 50mm – 290kg max clamping pressure

	Inc.vat	Ex.vat	Code
25 X 27mm	£1.96	£1.63	505512
50 X 30mm	£2.46	£2.05	505513
75 X 50mm	£4.45	£3.71	505514



HD G Clamp

This range of Axminster clamps is heavy duty, with bigger capacities and far greater clamping pressures. They feature drop-forged bodies, large clamping faces and a square rolled thread for extra strength.

Lifetime guarantee.

- 100 x 55mm – 580kg max clamping pressure
- 150 x 70mm – 680kg max clamping pressure
- 200 x 90mm – 840kg max clamping pressure
- 250 x 100mm – 925kg max clamping pressure

	Inc.vat	Ex.vat	Code
100 X 55mm	£8.95	£7.46	505515
150 X 70mm	£11.95	£9.96	505516
200 X 90mm	£14.95	£12.46	505517
250 X 100mm	£18.96	£15.80	505518



Forged G Clamp

This Axminster forged clamp is ideally suited to many applications in woodworking, engineering and fabrication or welding. The main part of the clamp is hard chrome plated for protection against corrosion. The machined and hardened Acme thread is quick to adjust and has a high loading capacity. A tommy bar applies force without difficulty and a swivelling shoe permits clamping of slightly tapered pieces. **Lifetime guarantee.**

- 50 x 50mm – 620 Kg max clamping pressure
- 100 x 60mm – 780 Kg max clamping pressure
- 150 x 75mm – 900 Kg max clamping pressure

	Inc.vat	Ex.vat	Code
50mm x 50mm	£15.96	£13.30	504001
100mm x 60mm	£22.96	£19.13	504002
150mm x 75mm	£29.95	£24.96	504003

NEW!

G Clamps

Deep Throat G Clamp

Every workshop ought to have a few deep throat G clamps, as they're invaluable for reaching into those slightly more inaccessible areas that are out of reach to standard clamps. **Lifetime guarantee.**

- 50 x 90mm – 190kg max clamping pressure
- 75 x 120mm – 350kg max clamping pressure



	Inc.vat	Ex.vat	Code
50 X 90mm	£3.46	£2.88	505519
75 X 120mm	£5.76	£4.80	505520

Forged Deep Throat G Clamp

With more than the throat capacity of a standard G-clamp, use these whenever the situation demands the extra reach these clamps offer. Weight for weight a forged steel clamp is far stronger than a cast or machined clamp. The grain of the metal is continuous throughout the forged structure. In the case of deep throat clamp, this becomes a huge advantage. The forging can withstand the extra forces exerted on the frame due to the higher leverage of the longer reach. The main part of the clamp is hard chrome plated for protection against corrosion. The machined and hardened Acme thread is quick to adjust and has a high loading capacity. A tommy bar allows you to apply force without difficulty and a swivelling shoe permits clamping of slightly tapered pieces. **Lifetime Guarantee**

- All sizes 600kg clamping force



	Inc.vat	Ex.vat	Code
75 X 125mm	£24.96	£20.80	505521
125 X 200mm	£39.96	£33.30	505522
150 X 250mm	£54.96	£45.80	505523



Edging G Clamp

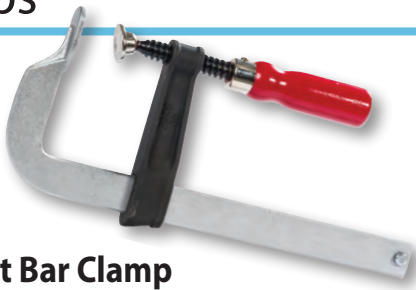
Edging clamps will clamp a lipping or edging to a board up to 60mm thick. They have a throat depth of 50mm. Screws on each side allow for off centre clamping. They are the same high quality as the Axminster Trade G clamp. **Lifetime guarantee.**

- Max clamping pressure – 250 Kg

	Inc.vat	Ex.vat	Code
55 X 60mm	£6.46	£5.38	505524

F Clamps

NEW!



Bulk discount available

Forged Flat Bar Clamp

The plated steel bar is bent into a semi-circle at one end forming the upper jaw. The sliding arm is nodular graphite cast iron with a wooden handle. The clamp has quick, positive adjustment and serrations prevent the sliding jaw slipping under pressure. Both jaws feature plastic caps to protect the work. The bar is hard chrome plated for protection against corrosion. The machined and hardened Acme thread is quick to adjust and has a high loading capacity. An excellent clamp for general use. **Lifetime guarantee.**

- 200 x 80mm - 275kg max clamping pressure

	Inc.vat	Ex.vat	Code
200 x 80mm	£9.96	£8.30	505534



Bulk discount available

Ductile Cast F Clamp

The rail is a hollow ground profile made from cold drawn steel with serrated edges to engage securely with the non-slip mechanism of the sliding arm. Both the fixed and sliding arms are made of high-grade, virtually unbreakable ductile cast iron. The wooden handle allows for plenty of tightening torque. Removable plastic protection caps help protect your work. **Lifetime guarantee.**

- 120 x 60mm - 200kg max clamping pressure
- 160 & 400 x 80mm - 270kg max clamping pressure
- 200 & 400 x 100mm - 280kg max clamping pressure
- 300 x 140mm & 600 x 175mm - 375kg max clamping pressure

	Inc.vat	Ex.vat	Code
120 x 60mm	£11.95	£9.96	505563
160 x 80mm	£13.96	£11.63	505564
400 x 80mm	£15.96	£13.30	505565
200 x 100mm	£17.95	£14.96	505566
400 x 100mm	£21.96	£18.30	505567
300 x 140mm	£27.96	£23.30	505568
600 x 175mm	£37.96	£31.63	505569



Bulk discount available

Forged F Clamp - Small

These forged clamps have strength and versatility with a design offering an excellent strength to weight ratio. The screw has a machined and hardened Acme thread, combining fast movement with a high loading capacity. A swivelling pad allows for clamping slightly tapered pieces. Both jaws feature plastic work protectors, the top protector has 'V' grooves to help hold round objects. **Lifetime guarantee.**

- All sizes - 250kg max clamping pressure

	Inc.vat	Ex.vat	Code
120 X 60mm	£11.95	£9.96	505535
200 X 60mm	£13.96	£11.63	505536



Bulk discount available

Forged F Clamp - Medium

These heavy duty forged clamps have tommy bar handles, perfect for woodwork as well as metal, welding and fabrication work. One of the main benefits of the spring tempered steel bar is the continuous 'active' pressure it offers. The jaw and bar are both hard chrome plated for protection against corrosion. The large Acme thread gives you fast action and high loading capacity. **Lifetime guarantee.**

- All sizes - 350kg max clamping pressure

	Inc.vat	Ex.vat	Code
160 X 80mm	£16.96	£14.13	505537
300 X 80mm	£18.96	£15.80	505538



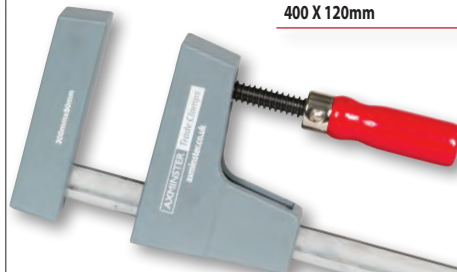
Bulk discount available

Forged F Clamp - Large

With a forged spring tempered steel bar, these clamps offer continuous 'active' pressure. The handles swivel through 90° giving you more leverage when tightening. The large diameter screw has a machined and hardened Acme thread, combining fast movement with a high loading capacity. The bar and jaw are both hard chrome plated for protection against corrosion. A swivelling pad allows for clamping slightly tapered pieces. Both jaws feature plastic work protectors; the top protector has 'V' grooves to help hold round objects. **Lifetime guarantee.**

- All sizes - 425kg max clamping pressure

	Inc.vat	Ex.vat	Code
250 X 120mm	£23.95	£19.96	505539
400 X 120mm	£29.95	£24.96	505540



Bulk discount available

Parallel Jaw Clamp

The Axminster Trade Parallel Jaw Clamp will find favour in situations where heavy duty clamps are too heavy and cumbersome. The clamps exert sufficient force holding your work firmly whilst glue cures. The large surface area of the jaws spreads the pressure evenly. A polyamide, glue resistant casing surrounds the jaws. The jaw faces remain parallel across the full width of the clamping area. The heads are reversible so the clamp can also act as a spreader. These are excellent, convenient cramps for light to medium duty applications. **Lifetime guarantee.**

- 300 x 95mm - 180kg max clamping pressure
- 600 x 95mm - 180kg max clamping pressure

	Inc.vat	Ex.vat	Code
300 x 95mm	£15.96	£13.30	505541
600 x 95mm	£16.96	£14.13	505542



Bulk discount available

HD Parallel Jaw Clamp

The bar is zinc coated, cold drawn steel, profiled to minimise flexing and bending. Hardened rollers in the moving head maintain a constant 90° angle under load. A patented anti-slip system prevents the movable head from sliding under pressure. The heads, encased in a glue resistant moulding are non-marring. The large clamping surface avoids damage to delicate surfaces. A unique swivelling handle allows you to apply greater clamping pressure. Supports keep the clamp level and stable when used on the assembly bench. The sliding head is reversible, turning the clamp into a spreader. **Lifetime guarantee.**

- All sizes - 400kg max clamping pressure

	Inc.vat	Ex.vat	Code
600 x 95mm	£35.95	£29.96	505543
1000 x 95mm	£44.95	£37.46	505544
1500 x 95mm	£54.96	£45.80	505545

Axminster Wall Mounted Bar Clamp Rack

- Extra heavy gauge steel over 25kg load capacity
- Pre-drilled for wall mounting
- 12mm wide slots, holds up to 12 clamps



Clamps not included



	Inc.vat	Ex.vat	Code
Rack - 590mm	£14.46	£12.05	950026



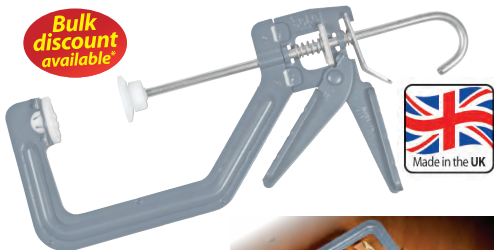
NEW!

Clamp Storage Trolley

This storage trolley offers a fully mobile clamp storage solution with additional provision for three extra workshop-made shelves for glues, small tools, screws or other hardware. Running on 50mm braked castors, you can easily move this trolley around the workshop even when fully laden. The support bars have a choice of positions to suit your clamps and there is a set of shelf brackets to enable you to fit a shelf onto a pair of support bars wherever you wish. The top and bottom frame will also take a shelf in each position. This trolley not only frees up valuable wall space but solves the problem of clamp storage which afflicts every workshop.

	Inc.vat	Ex.vat	Code
Clamp Storage Trolley	£84.96	£70.80	508327

Quick Clamps



Solo Speed Clamp

- Simple and quick to use ratchet-type mechanism
- Single handed operation, other hand free to hold work in position
- 80mm deep throat
- Made in UK
- Fitted with non-marring plastic jaw pads

	Inc.vat	Ex.vat	Code
100mm Plastic Jaw	£6.96	£5.80	951048
150mm Plastic Jaw	£7.96	£6.63	391507



Bulk discount available*

Mini Bar Spreader Clamp

The hi-tech resin body is sturdy as well as temperature resistant. This clamp makes for a perfect, lightweight third hand. The non-marking, stay-on pads protect the work surface. With a jaw depth of 60mm, this is a very useful clamp for those smaller jobs.

- 70kg max clamping pressure

	Inc.vat	Ex.vat	Code
150mm x 60mm	£9.96	£8.30	505531
300mm x 60mm	£11.96	£9.97	505576



Bulk discount available*

Bar Clamp/Spreader

With glass fibre, reinforced jaws and a strong 20 x 6mm steel bar, these clamps perform well. The biggest advantage is their simple, single-handed operation, leaving one hand free to steady the work. Simply by squeezing the handles to operate the clamp results in great control. They have non-slip inserts and the rear handle houses the release trigger. A push of a button locks or unlocks the reversible jaw to convert the clamp into a spreader. The jaw pads are tough and non-marring with a little 'give' to grip irregularly shaped work.

- All sizes – 100kg max clamping pressure

	Inc.vat	Ex.vat	Code
150 X 85mm	£16.96	£14.13	505528
300 X 85mm	£18.96	£15.80	505529
600 X 85mm	£20.95	£17.46	505530



Bulk discount available*

Alloy Bar Clamp/Spreader

The jaws are robust aluminium alloy on a 20 x 6mm steel bar. These die-cast jaws are capable of applying substantial pressure to the workpiece. Squeezing the handle advances the moving jaw. The spring-loaded face is slightly angled so its top touches first as the jaws close. As pressure is applied, the spring compresses to ensure even pressure distribution. The fixed jaw is reversible to convert the clamp quickly into a spreader. The jaw faces have non-marring, glue-resistant pads and the clutch operates with a simple release.

- All sizes – 160kg max clamping pressure

	Inc.vat	Ex.vat	Code
300 X 80mm	£22.45	£18.71	505532
600 X 80mm	£27.96	£23.30	505533



Bulk discount available*

Forged Quick Lever Clamp

These clamps combine speed with power. The ratchet mechanism gives an increased mechanical advantage and makes it easy to apply full pressure. Pressing the release button instantly relieves the pressure. These are extremely versatile clamps and are unaffected by vibration. Useful for many jobs, such as with jigs or temporarily holding parts whilst drilling.

Lifetime guarantee.

- 120 x 60mm – 170kg max clamping pressure
- 160 x 80mm – 200kg max clamping pressure
- 200 x 100mm – 230kg max clamping pressure

	Inc.vat	Ex.vat	Code
120 X 60mm	£22.96	£19.13	505525
160 X 80mm	£24.96	£20.80	505526
200 X 100mm	£29.95	£24.96	505527



Bulk discount available*

Axminster Trade Clamps Forged Quick Lever Guide Rail Clamp

This clamp fits into the slot of many extruded aluminium guide rails, such as the Festool FS and Makita guide rail system. Check your guide rail prior to ordering. The spigot is 12mm wide by 7.4mm thick and 60mm long. The ratchet handle results in extremely fast set-up. Once tightened, the grip is rock solid and unaffected by the vibration from power tools.

Lifetime guarantee.

	Inc.vat	Ex.vat	Code
Forged Quick Lever Guide Rail Clamp	£24.96	£20.80	505561

Axminster Spigot Clamp

Bulk discount available*

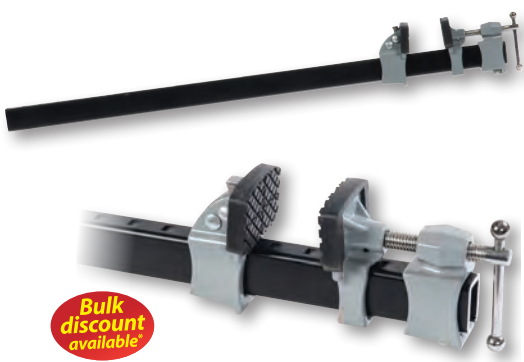
The Axminster Spigot Clamp has great potential for clamping jigs, fixtures or even workpieces (with a suitable drilled hole) to a bench or tabletop. The 7mm diameter, 40mm long spigot enables all sorts of items to be fixed onto the edge of a bench. Simply drill a 7mm hole in the side of whatever you wish to secure to your bench. Maximum opening is 65mm, cast alloy body with steel spigot.

	Inc.vat	Ex.vat	Code
7mm Spigot	£3.46	£2.88	951733

Sash Clamps

NEW!

AXMINSTER Trade Clamps



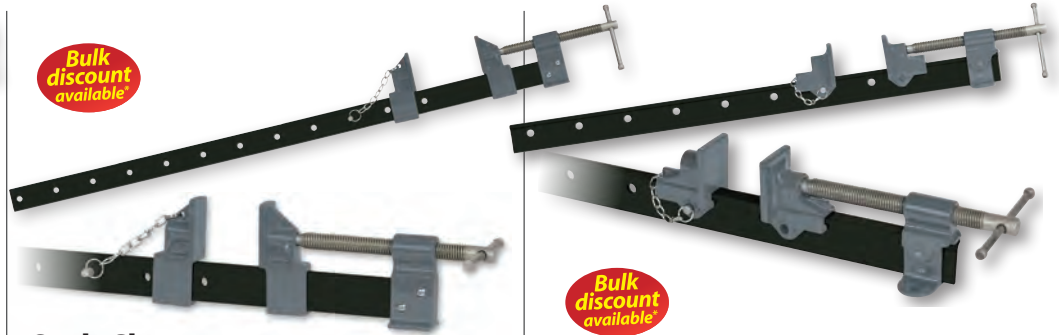
Bulk discount available

Aluminium Sash Clamp

The bars are extremely rigid aluminium extrusions. Both clamping heads slide along the bar independently. A spring-loaded latch on each head engages into notches on the bar. The latch locks the heads in place, making the clamp very easy to position on the work. By reversing the movable jaw, the clamp can spread a workpiece apart. Each jaw has a rubber lining to protect your work.

• All sizes – 250kg max clamping pressure

	Inc.vat	Ex.vat	Code
610mm	£24.96	£20.80	505570
915mm	£27.46	£22.88	505571
1,220mm	£29.95	£24.96	505572



Bulk discount available

Sash Clamp

Sash clamps are especially useful for clamping large section workpieces. The bars of our trade sash clamps have a unique chemically blackened surface to resist corrosion. The 32 x 6mm bars are made from cold drawn steel for strength. The grey ductile cast iron heads and slides are powder coated and with 50 x 27mm wide clamp faces. The threaded spindles have hardened rolled threads with a twin start for rapid adjustment. The head has a flat base, allowing the clamp to stand upright without support.

• Max clamping pressure – 600kg

	Inc.vat	Ex.vat	Code
760mm	£16.96	£14.13	505578
1,065mm	£19.96	£16.63	505579
1,370mm	£22.96	£19.13	505580

Bulk discount available

T Bar Clamp

These extra heavy duty clamps have strong 20mm x 45mm cold drawn steel bars. The T-section effectively eliminates twisting or bending under pressure. The bars also have a unique, chemically blackened surface to resist corrosion. The powder coated, ductile cast heads have 50 x 50mm clamping faces. Other features are the twin start screw thread and 125mm long tommy bar for fast adjustment countersunk holes in the base of the head allow for fixing to the bench if desired.

• Max clamping pressure - 800kg

	Inc.vat	Ex.vat	Code
1065mm	£32.95	£27.46	505562
1370mm	£35.95	£29.96	505547
1980mm	£39.96	£33.30	505548

Clamp Heads

NEW!



AXMINSTER Trade Clamps

Clamp Head Set

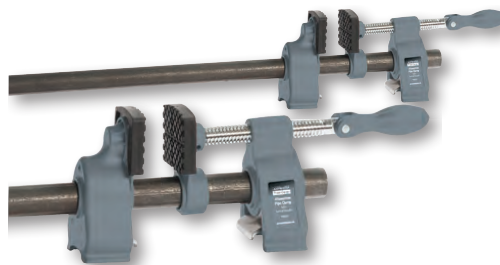
Separate clamp heads, offer complete flexibility in the choice of both length and material for the bar. Use timber for lighter weight and ease of working or metal box section for the ultimate in rigidity. Our clamp heads are cast iron and steel and feature an ingenious elongated pinhole, which improves the clamping performance. Pressure to the jaw faces drives the clamp heads down against the bar with equal force, maintaining the jaws at 90° to the bar. The maximum bar width is 25mm and the depth is unlimited (within reason!).

	Inc.vat	Ex.vat	Code
Clamps Head Set	£13.45	£11.21	505546

Pipe Clamps

NEW!

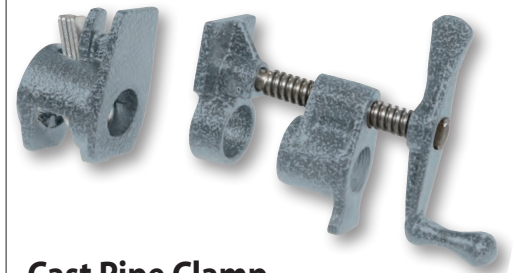
AXMINSTER Trade Clamps



Aluminium Pipe Clamp CW Swivel Handle

Buying the head and tail alone saves cost and storage space. More importantly, it gives great flexibility. You can use one set with many different lengths of pipe for various applications. Made from aluminium alloy, it will fit onto a standard 3/4" bore black iron pipe. Unlike the majority of pipe clamps, this one does not require a threaded end. Both heads slide along the pipe independently for ease of positioning. The fixed clamp head features a swivel handle to exert maximum pressure. Reversing the heads allows you to use the clamp as a spreader. The enamel finish resists glue contamination.

	Inc.vat	Ex.vat	Code
Axminster Aluminium Pipe Clamp	£25.96	£21.63	505573



Cast Pipe Clamp

This is the clamp of choice in the USA for joinery, cabinet making and general work. It offers great flexibility and clamps can be as long or short as you wish. One head set and a variety of pipe lengths gives you lots of choice for little outlay. The heads will fit onto standard 3/4" bore black iron pipe (nominal 1.05" O/D) with a 3/4" BSP thread, which is available from steel or plumbing merchants. We also offer specially plated, threaded pipes of the correct diameter.

• Max clamping pressure – 600kg

	Inc.vat	Ex.vat	Code
3/4" Cast Pipe Clamp	£10.96	£9.13	505560



Axminster Tool Maker's Clamps

- Designed for maximum strength and rigidity
- Useful for holding small parts together for drilling, tapping etc
- Made from steel with hardened, ground jaws
- Very high holding strength

	Inc.vat	Ex.vat	Code
50mm	£3.96	£3.30	210335
63mm	£4.75	£3.96	210336
75mm	£5.76	£4.80	210337
100mm	£7.75	£6.46	210338

Pipe Clamp Storage Plate

Storing clamps can sometimes be an issue in a workshop, where some sort of racking system usually has to be made. This plate has been specifically designed to fit the Axminster Trade Aluminium Pipe Clamp (505573). It can be screwed to a wall, ensuring that heavy, awkward clamps can be stored securely and safely. The other use for the plate is to screw it directly to an assembly bench so that the Pipe Clamp can be slotted into it, which is a very useful feature when repetitive clamping tasks are undertaken.

	Inc.vat	Ex.vat	Code
Storage Plate	£8.46	£7.05	505574



Plated Pipe Pack for 3/4" Pipe Clamps

These 3/4" pipe packs consist of either two 900mm or two 1,200mm lengths of specially plated steel pipe. Each piece is threaded at one end ready to take a pipe clamp head. This pack is suitable for Axminster or Pony Clamps (No 56 or No 50) and most other 3/4" pipe clamps.

	Inc.vat	Ex.vat	Code
Pipe Pack 900mm (Pkt 2)	£23.95	£19.96	210077
Pipe Pack 1,200mm (Pkt 2)	£26.95	£22.46	210078



Axminster Mini Spring Clamps

Small and simple, these mini versions share all the same features as their larger cousins, including pivoting jaw pads for clamping non-parallel items. The jaws open to a maximum of 25mm and the throat depth is 19mm. These clamps have many applications, from model making and holding small workpieces whilst glue dries, to simply clipping plans up or paperwork together. Sold as a pack of 5.

	Inc.vat	Ex.vat	Code
Pack of 5 Clamps	£3.46	£2.88	950231



Axminster Power Hand Clamp

The box joint design ensures both strength and correct jaw alignment. On squeezing the handles a spring-loaded pawl engages onto a toothed steel bar, giving positive non-slip clamping. Simply pressing the lever between the handles releases the clamp. The handles have moulded inserts to increase grip and the shape makes them easy to squeeze. The jaw pads have a cross vee to clamp round or irregular pieces. The pads swivel for even contact even when clamping non-parallel surfaces.

- Clamping pressure 35 to 40kg

	Inc.vat	Ex.vat	Code
58mm	£6.25	£5.21	210209
100mm	£8.76	£7.30	210210



Joiner's Mitre Clamp

The traditional style of mitre clamp made from cast iron with nylon-capped steel screws and accurately machined locating surfaces. Capacity is 60mm wide by 20mm deep.

	Inc.vat	Ex.vat	Code
Mitre Clamp	£11.46	£9.55	200236

Mitre Clamp

These alloy mitre clamps hold a joint firmly in position whilst the glue dries or a pin is driven home. We won't pretend these clamps are the heaviest duty in the world, but they do the job they are designed for well, and purchasing one for each corner of a frame won't break the bank. Timber capacity is 16mm deep and 75mm wide.



	Inc.vat	Ex.vat	Code
Mitre Clamp	£6.96	£5.80	340434



Bulk discount available*

Box of 10 Assorted Axminster Spring Clamps

Reliable, non-rusting, powerful and above all, inexpensive, these ABS mouldings have heavy-duty steel springs and non-marking plastic jaws. They have a myriad of applications, from jig making and holding small workpieces, to fixing a tarpaulin to a frame at an outdoor craft fair.

- 4 off 35mm capacity
- 4 off 60mm capacity
- 2 off 80mm capacity

	Inc.vat	Ex.vat	Code
Clamps - Pack 10	£14.95	£12.46	110036

Bulk discount available*



Axminster Spring Clamps

This is one of our best selling clamps, simple in design yet superbly versatile. The heavy-duty spring applies plenty of pressure whilst glue cures, or for temporary holding jigs or fixtures. The non-marring jaw pads swivel to maintain even pressure on non-parallel items. Jaw opening 50mm, depth 52mm.

	Inc.vat	Ex.vat	Code
150mm Capacity 52 x 50mm	£2.26	£1.88	410296

Axminster Heavy Duty Spring Clamps

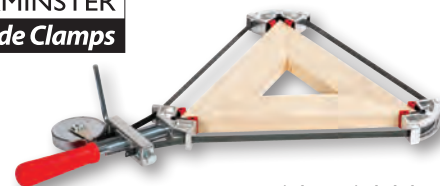


In a lot of cases a clamp just needs to hold two parts in place whilst the glue dries. You don't always require something capable of crushing a truck. Spring clamps are easy to position with one hand, fast, firm, relatively inexpensive and more than capable of fulfilling numerous clamping needs. These all-steel, plated clamps have vinyl plastic jaw tips to protect your workpiece. The same coating on the handle makes for comfortable use. Use these clamps for holding workpieces whilst glue dries, temporarily securing a moulding as you nail it in place, in small jigs or just as overgrown bulldog clips. Capacities given are for the clamps fully open and the throat depth.

	Inc.vat	Ex.vat	Code
H/D Spring Clamp 25mm	£2.26	£1.88	951744
H/D Spring Clamp 50mm	£3.46	£2.88	951743
H/D Spring Clamp 75mm	£5.26	£4.38	951742

Frame Clamps

AXMINSTER Trade Clamps



Timber not included

Frame Clamp

A tempered steel band maintains an even clamping pressure on the workpiece. The band passes through four aluminium corner brackets. Their internal corners have self-aligning plastic jaw faces for use on non-square work. The plastic jaws are removable when clamping square or rectangular work. A large handle with a screw thread applies the required pressure. By removing the aluminium corner pieces entirely, you can clamp oval, circular or coopered work. For use on frames 65mm to 915mm square.

	Inc.vat	Ex.vat	Code
Frame Clamp	£25.96	£21.63	505581

Timber not included



NOBEX

Nobex Framing Cord Clamp

Each tough, flexible plastic corner piece has an integral hinge allowing it to conform to any frame angle. The larger corner has a cleat to lock the cord absolutely tight and is quick and easy to use. Includes 2.5m of nylon cord for a good size frame and 4 or 8 unique flexible corners.

	Inc.vat	Ex.vat	Code
Cord Clamp - (4 Corners)	£6.25	£5.21	477119
Framing Cord Clamp (8 corners)	£8.95	£7.46	476662

Timber not included

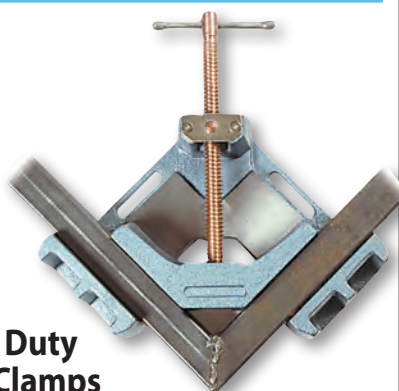


Multi-Angle Band Clamp

This lighter duty band clamp has 4m of strong nylon webbing, a screw tensioning device and four corner blocks with self-adjusting jaws enabling it to accommodate angles other than 90°. Perfect for picture framing.

	Inc.vat	Ex.vat	Code
Band Clamp	£14.26	£11.88	910142

Mitre Clamps



Heavy Duty Mitre Clamps

Rugged cast iron mitre clamps for heavy duty clamping of timber or metal sections. The jaws pivot on the end of the screw as are the screws where they pass through the body. This allows for a large degree of leeway when clamping pieces of different thickness. They can clamp mitre or T joints and of equal or unequal material thicknesses. All the clamping surfaces, including the bases, are 90°. Capacity 80mm and jaw depth 35mm

	Inc.vat	Ex.vat	Code
80mm x 35mm	£54.96	£45.80	910143

Frame Clamps



Veritas 4-Way Speed Clamp

The speed-clamping nuts let you make fast adjustments, yet hold securely when tightened. Cross-drilled, they slide easily on the threaded rods until they come up against a corner piece, when their threads engage. To release them, you just have to back them off a turn or two and they are then free to slide again. The speed clamp includes four corners, four speed clamping nuts and four 1/4" UNC threaded rods that will clamp up to 585mm (23") square. To increase clamping capacity to 1,120mm (44") square or 1,650mm (65") by 585mm (23") rectangle, an extension set is included; it contains four 1/4" UNC threaded rods and four coupling nuts.

	Inc.vat	Ex.vat	Code
4-Way Clamp	£34.96	£29.13	475309

Assembly Clamps



Trend Door Clamp

A ratchet style door clamp that will stop the door moving when drilling and fitting locks or any other door furniture. Simply slide the bracket under the door and squeeze the ratchet clamp. Padded to prevent door or floor damage, it is suitable for doors up to 55mm thick.

	Inc.vat	Ex.vat	Code
Clamp	£22.96	£19.13	701786



Trend Door Stand

A clever stand to hold a door or similar on its edge while planing or fitting door locks etc. An adjustable clamp securely holds a door etc from 32mm - 55mm thick whilst it is being worked on and will also allow it to be pivoted into an upright position for fitting. With a non-scratch base and a maximum door weight of 50kg.

	Inc.vat	Ex.vat	Code
Door Stand	£46.96	£39.13	701787

Assembly Clamps



Pair of Right-Angle Assembly Clamps

Dry assembly of a carcass or even trying to hold two panels together to place a fixing screw often leads to the desire for a third hand. Right-Angle assembly clamps are that third hand. Made from glass fibre reinforced nylon they have a single handed ratchet mechanism allowing them to be squeezed together, providing a firm hold. The clamps hold boards or panels from 10mm to 20mm thick at 90°, with a variation of up to 6mm in thickness between the panels. Use for test fitting, holding whilst applying clamps or placing a fixing. Overall size 100 x 75 x 40mm, sold in pairs.

	Inc.vat	Ex.vat	Code
Assembly Clamps (2)	£5.95	£4.96	202403

Toggle Clamps



Toggle Clamp Type A

The vertical toggle clamp (Type A) operates by raising the handle from the horizontal to the vertical position. When locked the handle forms a convenient grip to hold onto if part of a jig.

	Inc.vat	Ex.vat	Code
20mm (Holds 50kg)	£5.46	£4.55	500314
35mm (Holds 100kg)	£5.95	£4.96	500315
45mm (Holds 180kg)	£7.45	£6.21	500316
62mm (Holds 250kg)	£8.46	£7.05	378001
75mm (Holds 360kg)	£10.96	£9.13	500317



Toggle Clamp Type B

The horizontal toggle clamp (Type B) operates by moving the handle is moved from the vertical to the horizontal. It comes into its own where an upright handle would otherwise cause an obstruction.

	Inc.vat	Ex.vat	Code
15-35mm (Holds 50kg)	£5.95	£4.96	810468
15-50mm (Holds 90kg)	£5.95	£4.96	500319
30-65mm (Holds 227kg)	£6.46	£5.38	500321
35-95mm (Holds 340kg)	£8.95	£7.46	500320

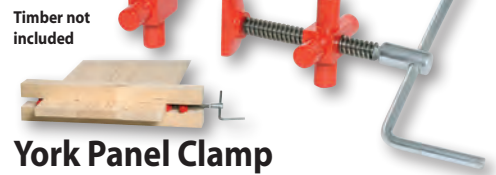


Toggle Clamp Type C

The piston (Type C) locks with the handle in the horizontal position. It pushes a workpiece against a fence or stop. An example can be found on most pocket hole jig systems. 20mm maximum piston travel.

	Inc.vat	Ex.vat	Code
20mm Travel	£10.45	£8.71	810469

Panel Clamps



York Panel Clamp

The clamp's spigots locate in holes drilled either in a bench top or in separate timber beams to provide a means of assembling multi-board panels. A second timber beam placed on top on the opposing spigots stiffens the whole assembly. Use the clamps in pairs for shorter timber lengths and in threes or more, when clamping longer boards. The removable handle keeps the work area clear once the clamps are tight.

	Inc.vat	Ex.vat	Code
Panel Clamp Set	£16.45	£13.71	500008



Veritas Panel Clamp

The Veritas® panel clamp tightens by hand and is stackable for production work. Best of all, you can make the clamp bars any length to suit your own needs. The specially serrated posts grip the bars, keeping a panel flat under load. Use 50 x 50mm (2x2s) or 50 x 100mm (2x4s) if you wish to stack panels timber for the bars. Drill 19mm diameter holes in the timber to suit the width of your board. Adjustable O-rings on the posts let you clamp anything from 16mm to 50mm thick without any shimming. The secret to the system is the balanced tension exerted on the bars. The greater the pressure, the more rigid the bars become. The screw has 125mm of travel. The panel clamp set, with one head and one tail, does not include the wood.

	Inc.vat	Ex.vat	Code
Panel Clamp	£39.96	£33.30	475209

PLANO



Plano Professional Glue Press Clamp

The Plano panel glue press solves two problems. It minimises the space required, compared to traditional sash clamps and ensures the resulting panel is flat. The press clamps sit vertically along a wall with a guide rail to hold them in position. The whole assembly takes next-to-no floor space. An added convenience of the vertical mounting is that the boards can be loaded one at a time. When the clamp is full, tightening the hand-wheel applies pressure vertically. In addition the sides of the clamp come together to produce lateral pressure. The result is a much stronger joint with all the timber exactly centred. The maximum clamping height available is 1,250mm and the maximum thickness is 120mm. The length is limited only by the length of wall space available, each guide rail being 1m long and easily linked together. The number of press units required will vary depending upon the type and size of timber used. Made of anodised aluminium and galvanised steel.

	Inc.vat	Ex.vat	Code
Glue Press Clamp 1,100mm	£114.96	£95.80	212482
Glue Press Clamp 1,250mm	£124.96	£104.13	212483
Glue Press Wall Rail 1,000mm	£14.46	£12.05	212481
Rail and Two Clamps 1,100mm	£229.96	£191.63	718425
Rail and Three Clamps 1,100mm	£329.95	£274.96	718426
Rail and Two Clamps 1,250mm	£249.96	£208.30	718427
Rail and Three Clamps 1,250mm	£359.95	£299.96	718428

Cam Clamps

Bulk discount available



Klemmsia Cam Clamps

Lightweight with tough hornbeam heads with galvanised steel bars, these have the fastest action of all. Used by violin makers where many clamps are needed, but total weight would be a problem. The cork faced jaws can exert a considerable amount of pressure without marking the work.

	Inc.vat	Ex.vat	Code
200 x 110mm	£9.96	£8.30	510430
200 x 150mm	£13.96	£11.63	510431
200 x 200mm	£14.95	£12.46	510432
300 x 110mm	£10.96	£9.13	510435
400 x 110mm	£11.95	£9.96	510440
600 x 110mm	£13.45	£11.21	510443



Axminster's Windsor Chair Course

5 Days



This action packed five day course will provide students with the relevant introductory skills to make this traditional English chair. Each student will make their own chair out of seasoned materials, thus reducing the wood drying problems of wood warping once it is taken home to a heated environment. During the five days, students will cover a whole range of woodworking skills, and so it is a very practical course, covering skills from wood selection, shaping and turning of the legs, cutting and shaping of the seat, setting up and steam bending the bows. All these components will then come together to be assembled into a classic heirloom of a completed Windsor chair. As well as the range of skills covered there will be a wide range of modern and traditional tools and techniques used from conventional tool shaping adzes and spokeshaves through to innovative power tools like the Arbortech. So why not join us for a great experience? We provide all the tools, timber and refreshments while you are here; you just have to remember to take the chair home with you! No experience needed.

For information or to book a course please contact Vicky Turner on **0800 9751905** or visit **axminsterskillcentre.co.uk**

Strap Clamps



NEW!

Bulk discount available

Axminster Trade Clamp Endless Ratchet Strap

A range of Axminster polyester webbing clamps, with one end securely double stitched to a ratchet-operated tensioner, which is quick to tension and simple to release. They can be used for clamping large, awkward projects or as a tie-down.

	Inc.vat	Ex.vat	Code
25mm x 3m 1,600kg	£5.46	£4.55	505592
35mm x 4m 6,000kg	£10.96	£9.13	505593
50mm x 6m 6,000kg	£14.96	£12.47	505594
25mm x 5m 2,800kg	£6.96	£5.80	507406
35mm x 8m 6,000kg	£12.96	£10.80	507407
50mm x 8m 6,000kg	£16.96	£14.13	507408
25mm x 5m 1,600kg	£5.96	£4.97	507405

AXMINSTER Trade Clamps

NEW!

Bulk discount available

Axminster Trade Clamp Claw Hook Ratchet Strap

Axminster polyester webbing clawed ratchet clamps, with one end securely double stitched to a ratchet-operated tensioner, which is quick to tension and simple to release, with a secured claw hook at the other end. They can be used for clamping large, awkward projects or as a tie-down.

	Inc.vat	Ex.vat	Code
35mm x 6m 3,000kg	£14.96	£12.47	507409
50mm x 6m 5,000kg	£19.96	£16.63	505595



Handi-Wrap

A convenient way to secure and bundle together almost anything, off-cuts, garden canes virtually anything. Great for clamping together unusual shapes whilst glue dries, the more turns the tighter it holds. Supplied with two rolls of film each measuring 100mm wide by 150m long, complete with an application handle for quick and easy wrapping.

	Inc.vat	Ex.vat	Code
Handi-Wrap Kit	£5.46	£4.55	719901
Pack of 4 Refills	£6.96	£5.80	719876



Universal Corners for Strap Clamps

These variable angle corners will clamp joints from 30° to almost 180°. The pivoting pads interlock so that the joint aligns correctly. Integral tabs clip onto 25mm webbing so the corners stay in place when tightening or repositioning. Made from strong glassfibre reinforced nylon, these corners will easily withstand the forces applied. They provide protection to the workpiece and prevent bruised corners. Sold in packs of four.

	Inc.vat	Ex.vat	Code
Universal Corners (Pkt 4)	£6.46	£5.38	202404



Lamello Clamping Set

Lamello's high quality, fast acting system offers consistent high pressure coupled with fast set-up. The protective corners remove any potential to damage the work in any way. Each corner piece is made of rounded section aluminium extrusion (60mm wide) which acts to spread the load. A clamping bar applies the tension and tucks in under the strap on attaining full tension. The kit comprises 2 x 8m long tension straps, 4 x 600mm extrusions and one pair of tension hooks.

	Inc.vat	Ex.vat	Code
Clamping Set	£224.95	£187.46	175020

Online VIDEO available

Flooring Clamps



Vaughan Flooring Clamp

A flooring clamp that can be used on floorboards, tongue and groove or woodblock flooring. The mechanical advantage gained through the linkage is quite amazing and allows the boards to be pushed into place with the minimum of effort. Made of steel with a painted finish and soft grip handle.

	Inc.vat	Ex.vat	Code
Flooring Clamp	£45.96	£38.30	390015

Flooring Edge Clamp

An invaluable aid for the installation of wooden strip flooring. It is positioned on the board with the lip over the edge and the clamp screw is tightened up against the wall to position the edge boards. There is a plastic end on the screw to prevent marking the wall.

	Inc.vat	Ex.vat	Code
Edge Clamp	£17.95	£14.96	410476



Holding On

Clamping and holding workpieces securely is an essential part of any woodworking project, particularly when using power tools.

ProGrip Guide Clamp

Many everyday routing applications involve securing workpieces, jigs or guides, but always the problem of how to retain an obstacle-free workspace, keeping clamps and holding devices out of the path of the router or other tools needs to be confronted.



Available in three lengths...

610mm Guide Clamp	915mm Guide Clamp	1,270mm Guide Clamp
£24.96	£29.95	£36.96
Ex.vat: £20.80	Ex.vat: £24.96	Ex.vat: £30.80
Code: 010018	Code: 010019	Code: 010020



Adjustable back stop



Featherboard



Length stop

ProGrip guide clamps offer a versatile and secure work holding/clamping method and also form the basis of a power tool guide system for routers, circular saws etc. Based on strong aluminium extrusions, the clamps incorporate a scale for setting lengths and stop positions. T-slots along the extrusion accept an assortment of accessories forming an exceptionally versatile system. The positive clamping mechanism has three progressive clamping pressures, allowing for final positioning before securely locking.

Accessories available for the ProGrip clamps include:

Back to back adaptors: Secure two clamps back to back so one clamps to the bench whilst the other holds a workpiece.

Featherboard: For use with fences and guides.

Adjustable backstop: Forms a length stop and sets the position of the clamp guides relative to an edge.

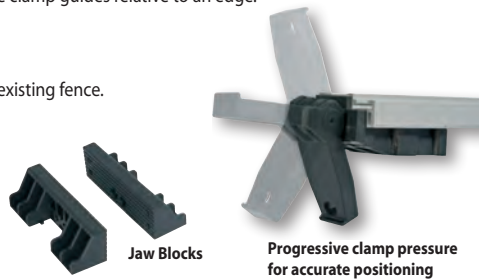
Jaw blocks: Fit over the existing jaw and widen the grip area.

Universal base: For your router or portable circular saw.

450mm fence: Attaches to the guide clamp as a new or to replace an existing fence.

ProGrip Guide Clamp Accessories

	Inc.vat	Ex.vat	Code
Back to Back Adaptors (Pkt 8)	£13.96	£11.63	010021
Adjustable Back Stop	£21.46	£17.88	200203
Featherboard	£13.45	£11.21	010022
Jaw Blocks (Pair)	£8.46	£7.05	600854
Universal Base	£6.95	£5.79	210007
Aluminium Fence 450mm	£3.46	£2.88	210016



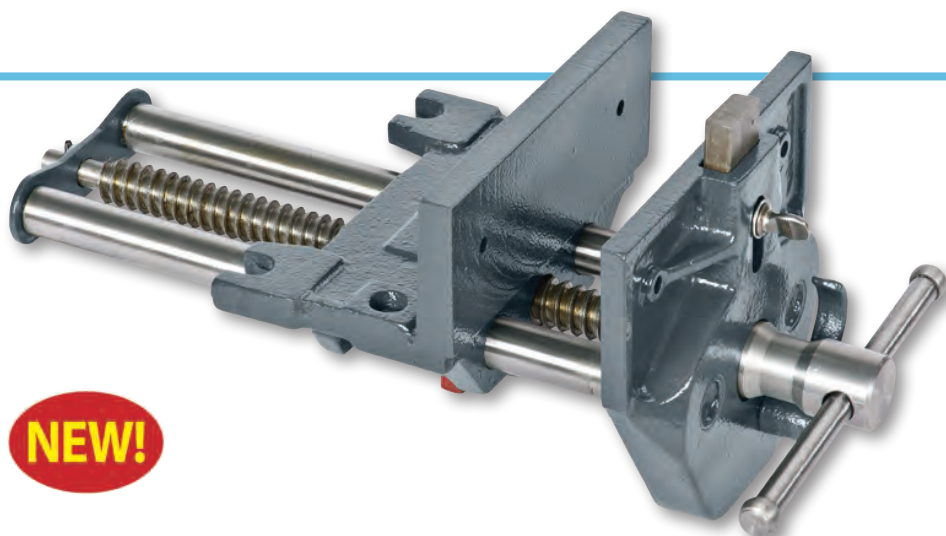
Rail fitted with Universal Base and saw (not included)



Guide Clamps

Very useful dual purpose clamp and guide rails. Used as a guide rail, they can be clamped across the width of a board to provide a firm straight edge to guide a jigsaw, router or circular saw and as a clamp they can be used to provide light pressure when gluing up multi-board panels. Two clamps bolted back-to-back will grip both the bench and the work at the same time, leaving both hands free to work with the tools. A pair of nuts and bolts are supplied with the clamp for this purpose.

	Inc.vat	Ex.vat	Code
610mm(24")	£15.96	£13.30	340950
610mm(24") x 2	£29.95	£24.96	340951
915mm(36")	£19.45	£16.21	340952
915mm(36") x 2	£35.95	£29.96	340953
1,270mm(50")	£21.46	£17.88	340954
1,270mm(50") x 2	£39.96	£33.30	340955



Bulk discount available*

AXMINSTER Trade Vices

Axminster Trade Vices Quick Release Carpenter's Vice

This design, made in cast iron, has stood the test of time. The vice is for professional use with a quick release trigger for speedy jaw adjustment. The jaws are drilled and ready to receive your own hardwood liners, and the front jaw sports an adjustable 'dog'. A bench is just a wooden table until you fit a decent vice. These vices will make you and your bench look like true professionals even if it is only in the evenings and at weekends. The vices are available in three jaw widths: 175mm(7") opening to 195mm(7.3/4"), 225mm(9") opening to 250mm(10") and 266mm(10.1/2") opening to 300mm. All are equipped with an adjustable front dog.

	Inc.vat	Ex.vat	Code
175mm(7") Vice	£62.95	£52.46	505549
225mm(9") Vice	£79.96	£66.63	505550
266mm(10.5") Vice	£99.96	£83.30	505575

NEW!



AXMINSTER Trade Vices

NEW!

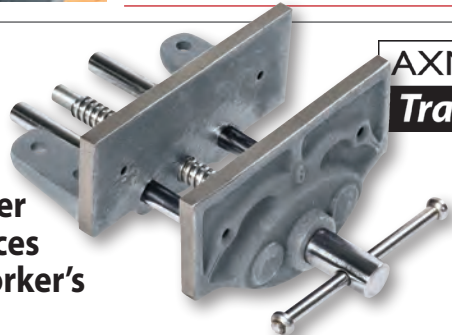
Bulk discount available*

Axminster Trade Vices Woodworker's Vice with Table Clamp

A useful, robust vice with a maximum jaw opening of 114mm. The body and front plates are made from close grained cast iron. Body and sliding jaw have provision for attaching wooden liners to protect the vice, workpiece and working tools. The steel main screw has an acme thread for smooth and responsive adjustment. The jaws are toed-in which allows them to meet only at the top, providing even clamping on the whole depth of the workpiece. The steel main screw, guide rods and handle are chrome plated for increased resistance to corrosion. The vice can either be bolted directly to the bench or secured with the clamping screw to benches of up to 50mm thickness.

	Inc.vat	Ex.vat	Code
150mm Vice	£20.95	£17.46	505557

NEW!



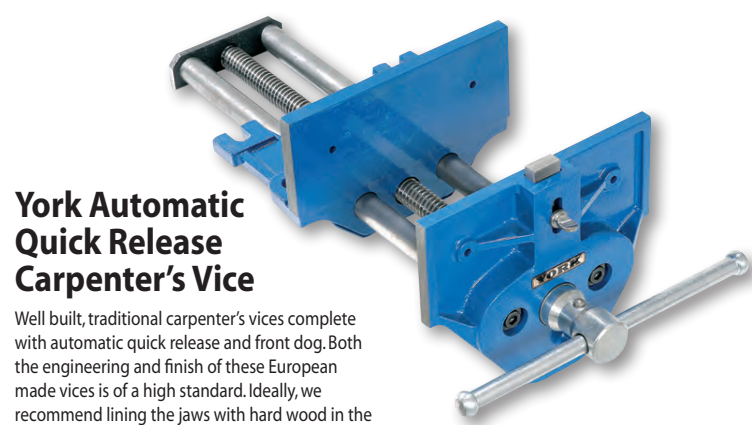
AXMINSTER Trade Vices

Bulk discount available*

Axminster Trade Vices Woodworker's Vice

Manufactured from close-grained grey cast iron for long, trouble free service. Accurately machined housings ensure smooth sliding movement and the solid steel guide rods reduce wear and tear giving the vices a smooth and true parallel action, free of side or cross deflection. Jaws have a "toe-in" feature so that, when fully closed, they meet only at the top, providing even clamping on the whole depth of the workpiece. Square body seating provides easy fitment under the bench top so that jaws are flush with the bench top. The steel main screw has buttress threads for smooth, accurate and responsive adjustment. Body and sliding jaw have provision for attaching wooden liners to protect the vice, workpiece and tools. Available in two widths, 150 and 200mm. The maximum jaw opening capacity is 125mm on the 150mm vice and 200mm on the 175mm vice.

	Inc.vat	Ex.vat	Code
150mm Vice	£29.95	£24.96	505559
175mm Vice	£17.95	£14.96	505558



York Automatic Quick Release Carpenter's Vice

Well built, traditional carpenter's vices complete with automatic quick release and front dog. Both the engineering and finish of these European made vices is of a high standard. Ideally, we recommend lining the jaws with hard wood in the usual way (screw holes provided).

Maximum capacity: fully open the 225mm(9") has a 355(14") capacity, whilst the 175mm(7") opens to a maximum of 210mm(8").

	Inc.vat	Ex.vat	Code
175mm(7")	£72.96	£60.80	202290
225mm(9")	£109.96	£91.63	100730



NEW!

Bulk discount available*

AXMINSTER Trade Vices

Axminster Trade Vices Parrot Vice

The Parrot Vice swivels through 360° in both the vertical and horizontal positions; tightening the jaws locks the entire vice in place. An ingenious cam arrangement beneath the jaws ensures the vice locks rock solid when gripping an item. Slightly backing off on the handle means you can rotate the vice for better access to your work without having to remove it from the jaws or change it from vertical to horizontal. The jaws are 89mm wide, 57mm deep and open to a maximum of 127mm. Holes in the jaws allow you to mount custom-made wooden jaws. The base has three fixing holes on 120mm centres. The cast iron construction is carefully machined and the total weight 7.5kg.

	Inc.vat	Ex.vat	Code
Parrot Vice	£36.96	£30.80	505556

Table Vices



NEW!

AXMINSTER Trade Vices

Bulk discount available

Axminster Trade Vices 75mm Swivel Head Vice

A well made, all cast iron bodied small engineer's vice, with smooth action thanks to the twin parallel bars and correctly tapered jaws. The lower part of the jaws will accept round stock up to 30mm. The vice may be clamped onto a bench or table top with a maximum thickness of 47mm. The swivelling base further increases its usefulness. This is a very useful vice, small but offering great value for money.

	Inc.vat	Ex.vat	Code
75mm Swivel	£23.95	£19.96	505552

PROXXON



Proxxon FMZ Precision Vice

The FMZ vice quickly and securely clamps to workbenches or tabletops up to 60mm thick. The ball and socket joint allows it to rotate in all directions, including flush to your work surface. The 75mm wide jaws have removable rubber covers. The body is strong, die-cast zinc alloy with a tough enamel finish. The jaws feature vertical and horizontal V-slots for securing round work. Max. capacity: 70mm, weight: 1.6 kg.



	Inc.vat	Ex.vat	Code
FMZ Vice	£30.96	£25.80	702052



PROXXON



Proxxon FMS 75 Precision Vice

The vice is a zinc die-casting with a ball and socket joint, which rotates in all directions (even downwards). The 75mm wide jaws have protective covers (for delicate workpieces). The jaws also feature vertical and horizontal V-slots for clamping round workpieces. A strong, lever operated suction cup facilitates instantaneous fixing to any smooth, flat surface. It is also possible to screw the vice to a bench. Maximum jaw opening: 70mm.

	Inc.vat	Ex.vat	Code
FMS 75 Vice	£30.96	£25.80	486353

STANLEY

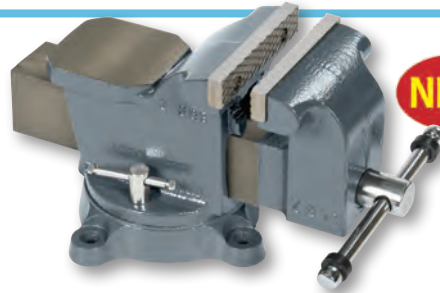
Stanley Multi Angle Hobby Vice

The Stanley Multi Angle Hobby Vice has a patented ball joint locking system allowing you to rotate your project a full 360° and lock it at any angle in multiple positions for convenience and easy access. The 75mm wide jaw, opens to 70mm and has removable rubber covers to protect delicate finishes. The large C-clamp mount attaches to work surfaces up to 60mm thick. Throat depth: 40mm, clamping capacity: 70mm, clamping force: 25kg.



	Inc.vat	Ex.vat	Code
Multi Angle Hobby Vice	£19.96	£16.63	953690

Mechanic's Vices



NEW!

AXMINSTER Trade Vices

Bulk discount available

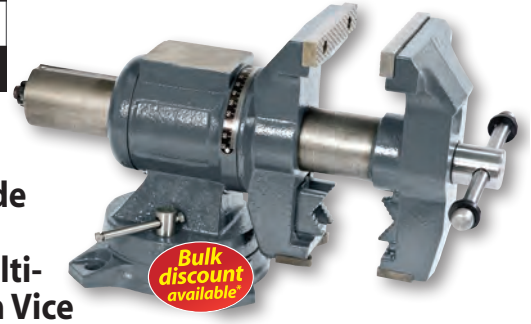
Axminster Trade Vices Mechanic's Vice

No-nonsense, swivelling mechanic's vices, with either 100mm(4") or 125mm(5") wide jaws, which should satisfy the needs of every mechanic, amateur or professional. The swivelling action is locked with two tommy bars; the tightening handle is fitted with rubber bump stops and there are additional semi-circular serrated jaws underneath the main jaws for holding circular items. The bases are equipped with four 10mm diameter securing holes.

	Inc.vat	Ex.vat	Code
100 x 70mm	£42.96	£35.80	505553
125 x 100mm	£52.96	£44.13	505554

AXMINSTER Trade Vices

NEW!



Bulk discount available

Axminster Trade Vices 125mm Mechanic's Multi-Purpose Bench Vice

This is a very comprehensive vice for mechanics and engineers. Constructed robustly in cast iron, it has a host of features not normally found elsewhere. The whole jaw assembly is mounted on a single tube that allows the jaws to be pivoted 180° either side of vertical. The whole vice can be swivelled through 360°, thus allowing access to all parts of an item wherever you wish. The jaws are ground and cross hatched for maximum grip, and you can grip round section material up to 50mm in the integral pipe grips. These are situated on the "downside" of the jaws, just swivel the jaws to bring them to the "topside". A second set of jaws to hold square material is also part of this end of the jaws. Finally, an integral anvil of a good size is provided. This is a seriously good vice that any engineer or mechanic will value. The fixing holes are 13mm diameter with centres on a 125mm square.

	Inc.vat	Ex.vat	Code
125mm(5")	£99.96	£83.30	505555

York Mechanic's Vice

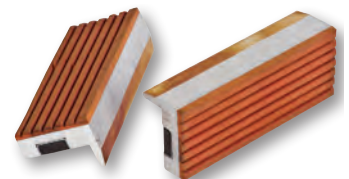
A quality mechanic's vice with a swivelling facility of 35° in either direction and hardened steel jaws (52-54 HRC). To the rear of the vice a peining anvil is provided avoiding the need to hammer directly on the jaws. Jaw width 100mm and jaw opening 105mm.



	Inc.vat	Ex.vat	Code
100 x 105mm	£79.96	£66.63	990082

Axminster Magnetic Vice Jaws

Hard rubber faces protect your work while the aluminium body of the protector houses a magnetic strip, which holds them in place on your vice. Essential when holding softer metals and finished work in your vice and cheap enough to be sacrificial when the need arises.

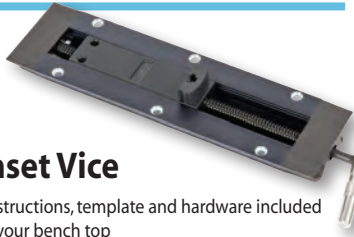


	Inc.vat	Ex.vat	Code
75mm	£5.95	£4.96	340189
100mm	£6.46	£5.38	340190
125mm	£7.96	£6.63	340191



Miscellaneous Vices

Veritas



Veritas Inset Vice

- Easy to install, instructions, template and hardware included
- Vice fits flush to your bench top
- 13mm tall dog locates into one of two positions
- Maximum travel 100mm
- 13mm diameter Acme-threaded steel rod
- Machined steel castings and anodised aluminium extrusions
- Minimum bench thickness 31.7mm (1.1/4")
- Made in Canada

	Inc.vat	Ex.vat	Code
Inset Vice	£85.96	£71.63	952803



Universal Work Holder & Hand Vice Set

- Pins easily modified to suit any shape work
- Work gripped externally or internally
- Handle unscrews allowing vice to be gripped by another vice
- Maximum capacity of 58 mm
- All steel Hand Vice with an 8mm wide jaw opening to 3mm
- Hollow knurled handle for thin wires or rods to pass through

	Inc.vat	Ex.vat	Code
Work Holder & Pin Vice	£19.96	£16.63	600826

Handy Vice



- Overall length 130mm
- 15mm wide jaws, maximum opening 6mm
- Hexagonal wooden handle forms secure grip
- Vertical and horizontal vee grooves
- Handle with through hole for long rods
- Ideal for holding small parts, jewellery and clock parts for inspection

	Inc.vat	Ex.vat	Code
Handy Vice	£16.45	£13.71	600773

Workshop Hand Vice



- Forged steel
- Spring-loaded
- 50mm (2") jaw width
- Maximum opening 28mm (1.1/8")

	Inc.vat	Ex.vat	Code
Hand Vice	£4.96	£4.13	510198

Model Craft Spring Loaded Mini Vice



This miniature spring-loaded vice for holding small parts for detailed work or objects needing to be held more delicately. It has a jaw capacity of 35mm and is 100mm in length. It can either be used by itself or on a larger table-mounted vice.

	Inc.vat	Ex.vat	Code
Spring Loaded Mini Vice	£7.96	£6.63	504810

Tail Vices



Veritas Tail Vice

This vice can be used for both types of tail vice with or without a shoulder. It has guide plates 50mm(2") wide by 380mm(15") long. The maximum opening is 200mm(8") (less the thickness of your wooden jaws). The single-lead Acme screw is 22mm(7/8") in diameter. Optional Turned Wooden Handle available, length of handle is 310mm and 30mm diameter.

	Inc.vat	Ex.vat	Code
Tail Vice	£69.96	£58.30	474719
Turned Wooden Handle	£5.95	£4.96	210538



Veritas Twin Screw Vice

This is the only non-racking, parallel action, full width end vice on the market. It applies an even clamping force along the jaws regardless of which handle you tighten. A spring-loaded locking pin enables the connecting chain to be disengaged for controlled 'skewing' when holding tapered workpieces. Maximum capacity 305mm(12"). The vice is easy to fit to an existing bench, requiring only the addition of an end cap drilled for the vice nuts and fixing bolts plus the vice jaw itself. The telescoping chain cover lets you set the spindles from 280mm(11") to 500mm(20") apart. Enough chain is included for 400mm(16") spacing, adequate for benches up to 800mm(32") wide. The kit includes the two vice screws, nuts, chain, chain cover, wooden handles, all the hardware and full fitting and mounting instructions (wooden jaws not included).

	Inc.vat	Ex.vat	Code
Twin-Screw Vice	£214.96	£179.13	500226

Anvils



Axminster 5 Kilo Anvil

This handy 5kg(11lb) anvil has a flat working surface 125mm(5") x 60mm(2.3/8") with a 90mm(3.1/2") long tapering horn. Four cut-outs are provided in the base for permanent fixing if required. Made of cast iron.

	Inc.vat	Ex.vat	Code
5 Kilo Anvil	£17.95	£14.96	110149

Miniature Anvil with Stand

Miniature anvil which comes with stand is ideal for jewellery making and intricate jobs. Overall height 70mm, width 125mm.



	Inc.vat	Ex.vat	Code
Miniature Anvil	£19.45	£16.21	700325

Vice Screws

York Front Vice Screw



This vice screw can be incorporated into any workbench, especially the front vice assembly, or made into a small press. With 28mm diameter handle socket and recessed back nut, the thread is precision rolled to give extra strength and has a 5mm pitch. The thread diameter is 28mm with overall length of 330mm and a screw travel of 165mm.

	Inc.vat	Ex.vat	Code
330mm	£22.96	£19.13	510200

York Tail Vice Screw



For the manufacture of traditional tail vices and of course many other workshop applications where extra strength is required. The screw thread runs in quality grey cast iron flanged nuts, the handle socket is 28mm in diameter. The thread is precision rolled to give extra strength and has a 5mm pitch. It has a 28mm diameter thread with overall length of 535mm and an open capacity of 390mm.

	Inc.vat	Ex.vat	Code
535mm	£25.96	£21.63	510199

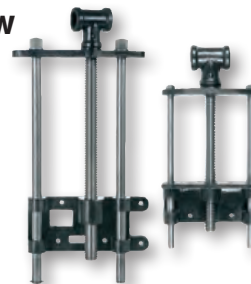
York Universal Vice Screw



A universal bench screw for the manufacture of vices, presses etc. Manufactured to the very same specification as the tail and front vice screw with a round vice nut, 24mm x 5mm thread, an overall length of 400mm and a usable threaded stroke of 320mm.

	Inc.vat	Ex.vat	Code
400mm	£22.96	£19.13	510203

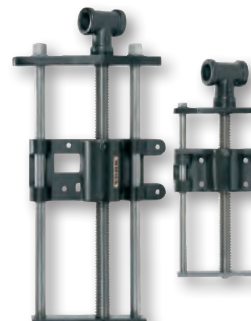
York Plain Screw Vice Guide



Made for woodworkers wanting to make their own vice assemblies, with strong precision rolled threads, twin guides and 28mm cast iron handle socket. Exceptionally sturdy, very easy to use and totally distortion free, these vice guides are most impressive pieces of engineering. The 350mm capacity guide incorporates a sturdy 28mm x 5mm thread with an overall length of 550mm. The 220mm capacity guide has a 24mm x 5mm thread and an overall length of 390mm.

	Inc.vat	Ex.vat	Code
220mm capacity	£34.96	£29.13	510201
350mm capacity	£56.95	£47.46	510202

York Quick Release Vice Guides



A very welcome development of an old favourite, these vice guides incorporate an ingenious quick release feature. The mechanism operates very efficiently. All you have to do is apply a half turn to the screw and the vice jaws slide in or out in no time. Construction of both sizes is impressively strong from steel and cast iron. The overall size of the smaller one (excluding the protruding handle socket) is 310mm x 175mm with a 24mm diameter screw whilst the larger one is 470 x 265mm with a 24mm diameter screw.

	Inc.vat	Ex.vat	Code
310mm	£57.96	£48.30	100731
470mm	£78.96	£65.80	100732