



# Pacific Hoists

## COMEUP ELECTRIC WINCHES

Comeup Electric Winches come in various sizes and lifting capacities. All winches are precision engineered and constructed from heavy duty material which creates a high performance product with low maintenance; suited for a wide range of applications. The electric winches feature the CP, CWG and CWL range.

### Features

- Lightweight and compact design for easy installation and portable use.
- Electromagnetic spring-applied failsafe brake designed for both static and dynamic loading which applies automatically in the event of power loss.
- IP65 pendant control.
- 24V x 3 meter push button control supplied as standard with all CP and CWG models.
- 240V x 10 meter direct online control pendant as standard with CWL models
- Compact load sharing design of the heat-treated planetary gear which ensures quiet operation and long life.
- Emergency stop function switch is featured on all models.
- Optional cordless radio remote control available on request



CWL Range

CP Range



CWG Range



## Specifications

### CWL RANGE

| MODEL                   | CWL200  | CWL200L | CWL301L |
|-------------------------|---------|---------|---------|
| Stock Code              | CWL200  | CWL200L | CWL305  |
| Rated Capacity (kg)     | 200     | 200     | 300     |
| Lifting Speed (m/min)   | 11 - 16 | 11 - 16 | 16 – 25 |
| Phase Voltage           | 240 x 1 | 240 x 1 | 240 x 1 |
| Wire Rope (Ø mmxm)      | 5 x 46  | 5 x 71  | 6 x 60  |
| Max. Lifting Height (m) | 45      | 69      | 58      |
| Net Weight (kg)         | 30      | 33      | 40      |

### CP RANGE

| MODEL                   | CP200   | CP250   | CP300   | CP500   | CP500T  | CP750T  |
|-------------------------|---------|---------|---------|---------|---------|---------|
| Stock Code              | ACW200  | ACW250  | ACW300  | ACW305  | ACW306  | ACW310  |
| Rated Capacity (kg)     | 200     | 250     | 300     | 500     | 500     | 750     |
| Lifting Speed (m/min)   | 10 - 15 | 10 - 15 | 10 - 15 | 10 - 15 | 12-18   | 10 – 15 |
| Phase Voltage           | 240 x 1 | 240 x 1 | 240 x 1 | 240 x 1 | 415 x 3 | 415 x 3 |
| Wire Rope (Ø mmxm)      | 6 x 30  | 6 x 30  | 6 x 30  | 7 x 60  | 7 x 60  | 9 x 60  |
| Max. Lifting Height (m) | 29      | 29      | 29      | 58      | 58      | 58      |
| Net Weight (kg)         | 32      | 34      | 38      | 55      | 54      | 135     |

### CWG RANGE

| MODEL (CWG)             | 10077   | 30075   | 10151   | 30151   | 500TH   | 30265   |
|-------------------------|---------|---------|---------|---------|---------|---------|
| Stock Code              | ACW320  | ACW345  | ACW330  | ACW350  | ACW355  | ACW340  |
| Rated Capacity (kg)     | 300     | 300     | 400     | 500     | 500     | 650     |
| Lifting Speed (m/min)   | 12 – 19 | 10 – 15 | 12 – 18 | 12 – 18 | 19 – 34 | 12 – 18 |
| Phase Voltage           | 240 x 1 | 415 x 3 | 240 x 1 | 415 x 3 | 415 x 3 | 415 x 3 |
| Wire Rope (Ø mmxm)      | 6 x 60  | 6 x 30  | 9 x 60  | 9 x 60  | 8 x 130 | 9 x 60  |
| Max. Lifting Height (m) | 58      | 29      | 58      | 58      | 127     | 58      |
| Net Weight (kg)         | 42      | 32      | 120     | 120     | -       | 154     |



The information shown is to be used as a guide only. Specifications are subject to change without notice. All materials handling or lifting jobs should be assessed individually. Pacific Hoists products are NOT to be used for lifting or lowering persons.

#### HEAD OFFICE

24 Foundry Rd,  
Seven Hills NSW 2147 Australia  
| P +61 2 8825 6900  
| F +61 2 8825 6999  
| E sales@pacifichoists.com.au

#### WESTERN AUSTRALIA

Unit 1, 31 Colin Jamieson Drive,  
Welshpool WA 6106 Australia  
| P +61 8 6253 1000  
| F +61 8 9458 9840  
| E sales@pacifichoists.com.au

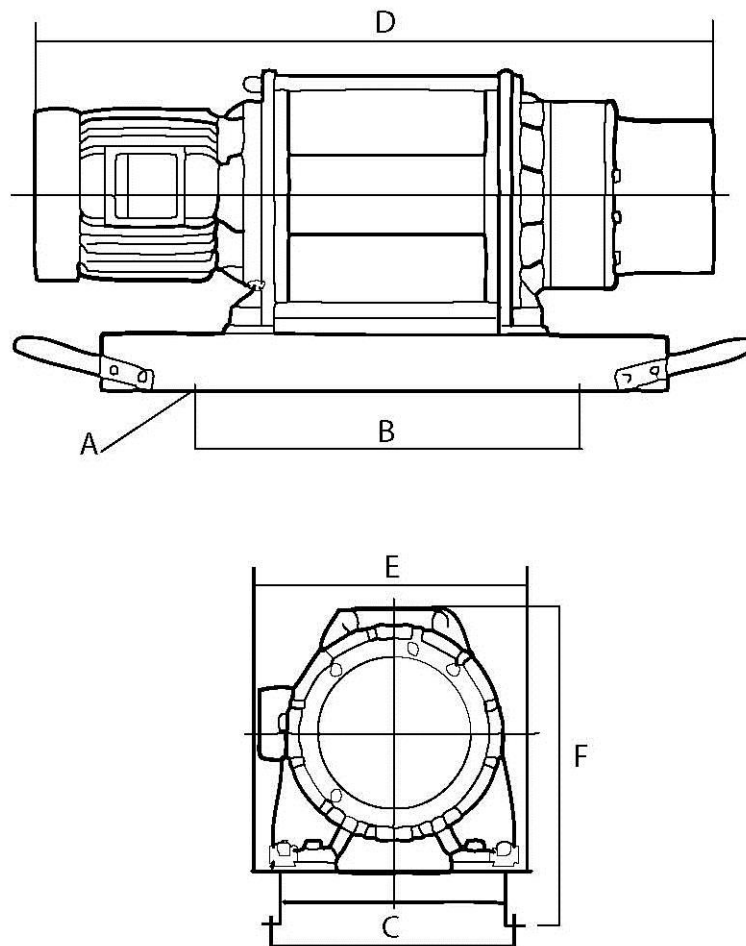
#### NEW ZEALAND

11 Druces Rd,  
Wiri 2104 Auckland New Zealand  
| P +64 9 263 5566  
| F +64 9 263 5567  
| E info@pacifichoists.co.nz

## CWG RANGE (CONTINUED)

| MODEL (CWG)             | 30375     | 30565    | 30750      | 31500    | 34000      |
|-------------------------|-----------|----------|------------|----------|------------|
| Stock Code              | ACW375    | ACW565   | ACW750     | ACW800   | ACW850     |
| Rated Capacity (kg)     | 900       | 1100     | 2200       | 3500     | 5000       |
| Lifting Speed (m/min)   | 13 – 20.6 | 14 – 25  | 6.9 – 12.6 | 5.8 – 8  | 8 – 12.2   |
| Phase Voltage           | 415 x 3   | 415 x 3  | 415 x 3    | 415 x 3  | 415 x 3    |
| Wire Rope (Ø mmxm)      | 10 x 60   | 12 x 100 | 16 x 100   | 18 x 150 | 22.4 x 200 |
| Max. Lifting Height (m) | 58        | 97       | 97         | 144      | 192        |
| Net Weight (kg)         | 185       | 250      | 400        | 800      | 1380       |

## Dimensions (in mm)



The information shown is to be used as a guide only. Specifications are subject to change without notice. All materials handling or lifting jobs should be assessed individually. Pacific Hoists products are NOT to be used for lifting or lowering persons.



### HEAD OFFICE

24 Foundry Rd,  
Seven Hills NSW 2147 Australia  
| P +61 2 8825 6900  
| F +61 2 8825 6999  
| E sales@pacifichoists.com.au

### WESTERN AUSTRALIA

Unit 1, 31 Colin Jamieson Drive,  
Welshpool WA 6106 Australia  
| P +61 8 6253 1000  
| F +61 8 9458 9840  
| E sales@pacifichoists.com.au

### NEW ZEALAND

11 Druces Rd,  
Wiri 2104 Auckland New Zealand  
| P +64 9 263 5566  
| F +64 9 263 5567  
| E info@pacifichoists.co.nz

## CWL RANGE

| MODEL | CWL200  | CWL200L | CWL301L |
|-------|---------|---------|---------|
| A     | 8 – Ø11 | 8 – Ø11 | 8 – Ø11 |
| B     | 152     | 207     | 207     |
| C     | 135     | 135     | 135     |
| D     | 415.5   | 470.5   | 556     |
| E     | 210     | 210     | 210     |
| F     | 270     | 270     | 270     |

## CP RANGE

| MODEL | CP200     | CP250     | CP300     | CP500     | CP500T    | CP750T  |
|-------|-----------|-----------|-----------|-----------|-----------|---------|
| A     | 6 – Ø10.5 | 6 – Ø10.5 | 6 – Ø10.5 | 4 x Ø13.5 | 4 x Ø13.5 | 6 – Ø16 |
| B     | 142       | 142       | 142       | 267       | 267       | 400     |
| C     | 142       | 142       | 142       | 156       | 156       | 300     |
| D     | 510       | 548       | 576       | 694       | 704       | 870     |
| E     | 210       | 210       | 210       | 260       | 260       | 347     |
| F     | 241       | 241       | 241       | 299       | 299       | 360     |

## CWG RANGE

| MODEL (CWG) | 10077     | 30075     | 10151   | 30151   | 500TH   | 30265   | 30375   | 30565   | 30750   | 31500   | 34000   |
|-------------|-----------|-----------|---------|---------|---------|---------|---------|---------|---------|---------|---------|
| A           | 4 – Ø13.5 | 6 – Ø10.5 | 4 – Ø16 | 4 – Ø16 | 6 - Ø16 | 4 – Ø16 | 4 – Ø19 | 4 – Ø19 | 4 – Ø22 | 8 – Ø30 | 8 – Ø32 |
| B           | 197       | 142       | 400     | 400     | 460     | 400     | 500     | 620     | 600     | 847     | 920     |
| C           | 156       | 142       | 325     | 325     | 300     | 325     | 370     | 425     | 499     | 680     | 680     |
| D           | 624       | 477       | 937     | 922     | 1002    | 940     | 974     | 1120    | 1246    | 1439    | 1860    |
| E           | 252       | 210       | 367     | 367     | 347     | 367     | 400     | 470     | 565     | 740     | 740     |
| F           | 300       | 241       | 425     | 425     | 360     | 425     | 445     | 520     | 658     | 860     | 905     |



The information shown is to be used as a guide only. Specifications are subject to change without notice. All materials handling or lifting jobs should be assessed individually. Pacific Hoists products are NOT to be used for lifting or lowering persons.

### HEAD OFFICE

24 Foundry Rd,  
Seven Hills NSW 2147 Australia  
| P +61 2 8825 6900  
| F +61 2 8825 6999  
| E sales@pacifichoists.com.au

### WESTERN AUSTRALIA

Unit 1, 31 Colin Jamieson Drive,  
Welshpool WA 6106 Australia  
| P +61 8 6253 1000  
| F +61 8 9458 9840  
| E sales@pacifichoists.com.au

### NEW ZEALAND

11 Druces Rd,  
Wiri 2104 Auckland New Zealand  
| P +64 9 263 5566  
| F +64 9 263 5567  
| E info@pacifichoists.co.nz



# Pacific Hoists

## COMEUP GROOVED ELECTRIC WINCHES

Comeup Grooved Electric Winches come in various sizes and lifting capacities and are precision engineered and constructed from heavy duty material. The grooved drum will prevent the wire rope from building up unevenly when spooled, especially when multiple layers are wrapped. This will increase the performance and life expectancy of this product. Comeup winches are a high performance product with low maintenance, plus they can be custom-built to suit a wide range of applications. Please contact us to see what we can do for you.

### Features

- Lightweight and compact design for easy installation and portable use.
- Grooved drum for even and convenient spooling.
- Electromagnetic spring-applied failsafe brake designed for both static and dynamic loading which applies automatically in the event of power loss.
- IP65 pendant control.
- 24V push button control supplied as standard,
- Compact load sharing design of the heat-treated planetary gear which ensures quiet operation and long life.
- Emergency stop function switch is featured on all models.
- Available in 500kg, 1, 2 and 3 tonne capacity with lifting height varying from 5 to 14m.
- Custom-built options available.



CEP500



CEP1000S



CEP2000



CEP3001

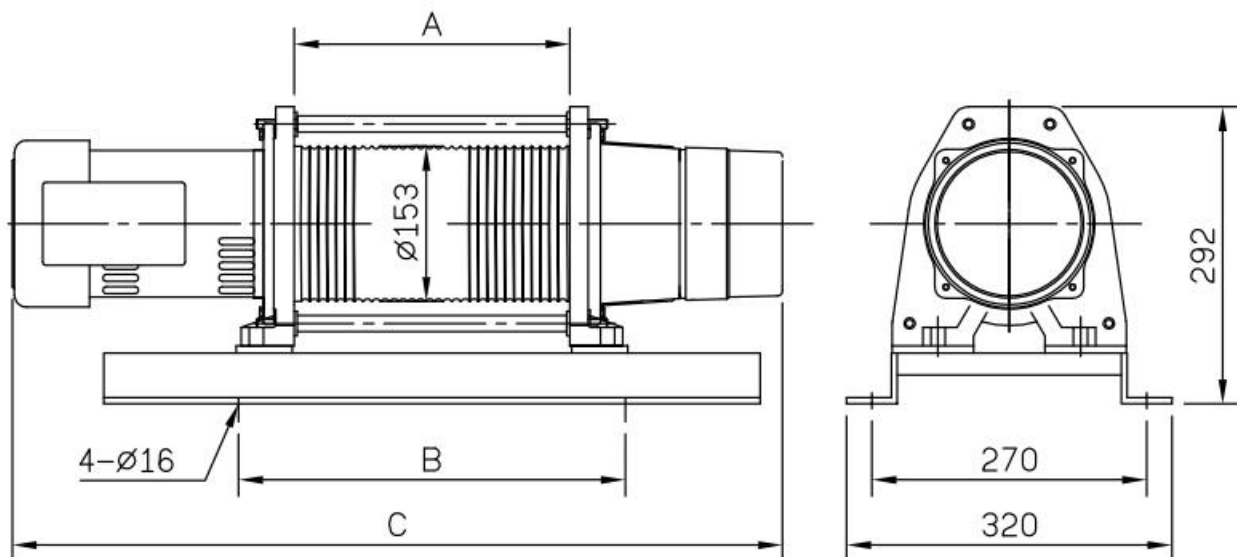
## Specifications

### CEP500(S) RANGE

| MODEL                     | CEP500-5M    | CEP500-8M | CEP500S-5M   | CEP500S-8M |
|---------------------------|--------------|-----------|--------------|------------|
| Rated Capacity (kg)       | 500          |           |              |            |
| Phase (50Hz)              | Three        |           | Single       |            |
| Double Fall Speed (m/min) | 8.3          |           |              |            |
| Motor (kw x P)            | 0.75 x 4     |           |              |            |
| Power Source (50Hz)       | 380/400/415V |           | 220/230/240V |            |
| Lifting Height (m)        | 5            | 8         | 5            | 8          |
| Wire Rope (ø mmxm)        | 8 x 16       | 8 x 22    | 8 x 16       | 8 x 22     |
| Dimension                 | A (mm)       | 265       | 365          | 265        |
|                           | B (mm)       | 380       | 480          | 380        |
|                           | C (mm)       | 770       | 870          | 770        |
| Net Weight (kg)           | 68           | 73        | 68           | 73         |

## Dimensions

### CEP500(S) RANGE



The information shown is to be used as a guide only. Specifications are subject to change without notice. All materials handling or lifting jobs should be assessed individually. Pacific Hoists products are NOT to be used for lifting or lowering persons.

#### HEAD OFFICE

24 Foundry Rd,  
Seven Hills NSW 2147 Australia  
| P +61 2 8825 6900  
| F +61 2 8825 6999  
| E sales@pacifichoists.com.au

#### WESTERN AUSTRALIA

Unit 1, 31 Colin Jamieson Drive,  
Welshpool WA 6106 Australia  
| P +61 8 6253 1000  
| F +61 8 9458 9840  
| E sales@pacifichoists.com.au

#### NEW ZEALAND

11 Druces Rd,  
Wiri 2104 Auckland New Zealand  
| P +64 9 263 5566  
| F +64 9 263 5567  
| E info@pacifichoists.co.nz

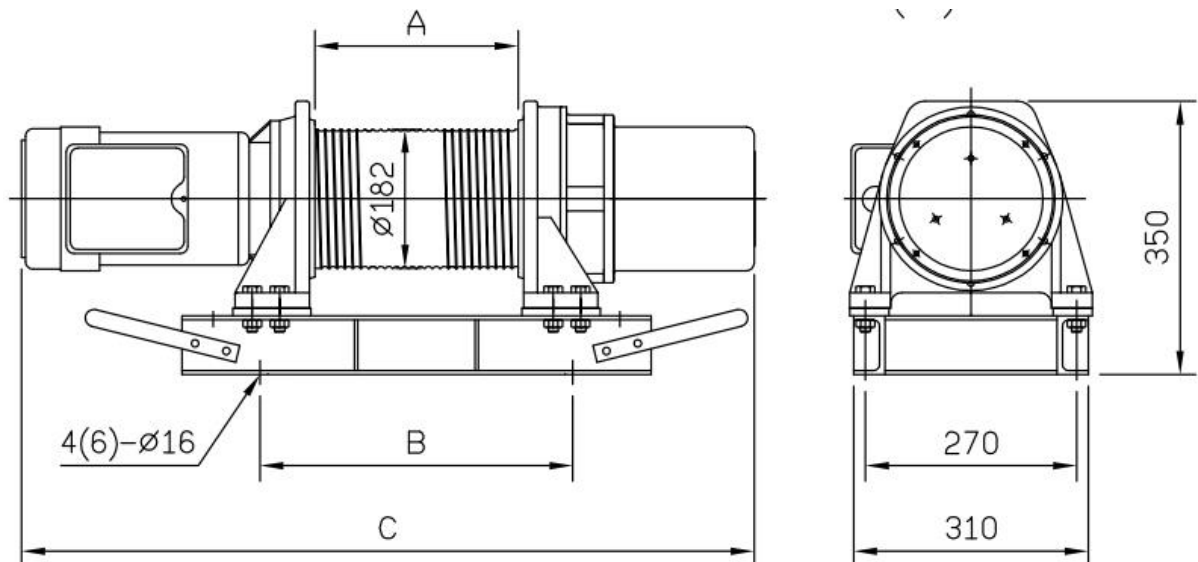
## Specifications

### CEP1000(S) RANGE

| Model                     | CEP<br>1000-5M | CEP<br>1000-8m | CEP<br>1000-14M | CEP<br>1000S-5M | CEP<br>1000S-8m | CEP<br>1000S-14M |
|---------------------------|----------------|----------------|-----------------|-----------------|-----------------|------------------|
| Rated Capacity (kg)       | 1000           |                |                 |                 |                 |                  |
| Phase (50Hz)              | Three          |                |                 | Single          |                 |                  |
| Double Fall Speed (m/min) | 7.5            |                |                 |                 |                 |                  |
| Motor (kw x P)            | 1.5 x 4        |                |                 |                 |                 |                  |
| Power Source (50Hz)       | 380/400/415V   |                |                 | 220/230/240V    |                 |                  |
| Lifting Height (m)        | 5              | 8              | 14              | 5               | 8               | 14               |
| Wire Rope (Ø mmxm)        | 8 x 16         | 8 x 22         | 8 x 34          | 8 x 16          | 8 x 22          | 8 x 34           |
| Dimension                 | A (mm)         | 470            | 670             | 1070            | 470             | 670              |
|                           | B (mm)         | 600            | 800             | 1200            | 600             | 800              |
|                           | C (mm)         | 1150           | 1350            | 1750            | 1150            | 1350             |
| Net Weight (kg)           | 111            | 126            | 156             | 111             | 126             | 156              |
| Gross weight (kg)         | 151            | 166            | 196             | 151             | 166             | 196              |

## Dimensions

### CEP1000(S) RANGE



The information shown is to be used as a guide only. Specifications are subject to change without notice. All materials handling or lifting jobs should be assessed individually. Pacific Hoists products are NOT to be used for lifting or lowering persons.

#### HEAD OFFICE

24 Foundry Rd,  
Seven Hills NSW 2147 Australia  
| P +61 2 8825 6900  
| F +61 2 8825 6999  
| E sales@pacifichoists.com.au

#### WESTERN AUSTRALIA

Unit 1, 31 Colin Jamieson Drive,  
Welshpool WA 6106 Australia  
| P +61 8 6253 1000  
| F +61 8 9458 9840  
| E sales@pacifichoists.com.au

#### NEW ZEALAND

11 Druces Rd,  
Wiri 2104 Auckland New Zealand  
| P +64 9 263 5566  
| F +64 9 263 5567  
| E info@pacifichoists.co.nz

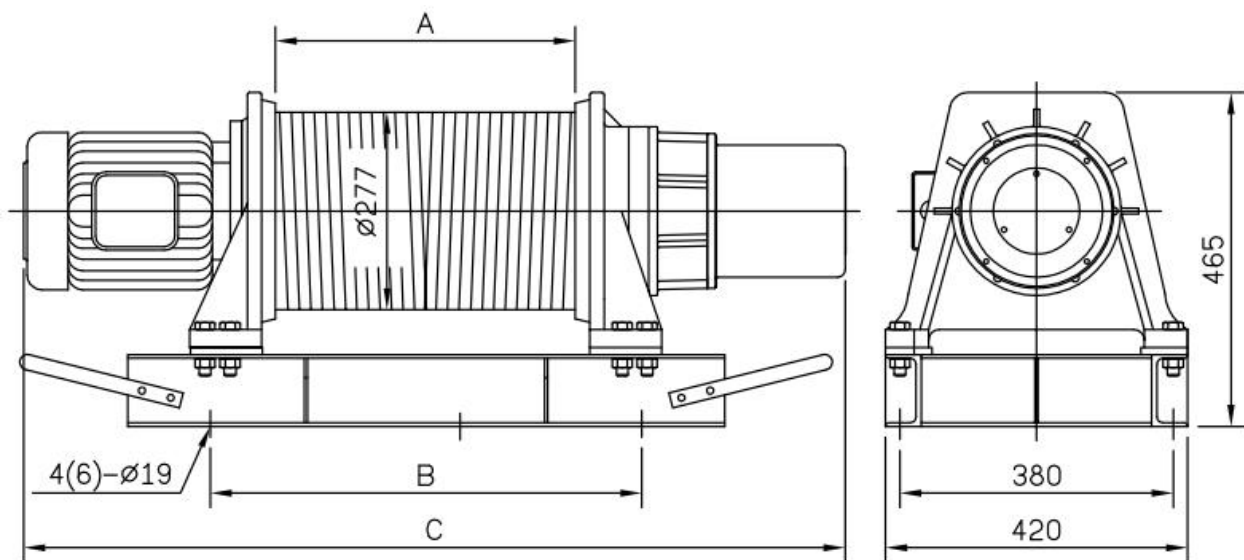
## Specifications

### CEP2000 RANGE

| Model                     | CEP2000-5M   | CEP2000-8m | CEP2000-14M |
|---------------------------|--------------|------------|-------------|
| Rated Capacity (kg)       | 2000         |            |             |
| Phase (50Hz)              | Three        |            |             |
| Double Fall Speed (m/min) | 5            |            |             |
| Motor (kw x P)            | 2.3 x 4      |            |             |
| Power Source (50Hz)       | 380/400/415V |            |             |
| Lifting Height (m)        | 5            | 8          | 14          |
| Wire Rope (ø mmxm)        | 10 x 16      | 10 x 22    | 10 x 34     |
| Dimension                 | A (mm)       | 427        | 522         |
|                           | B (mm)       | 600        | 700         |
|                           | C (mm)       | 1170       | 1265        |
| Net Weight (kg)           | 190          | 215        | 265         |
| Gross Weight (kg)         | 240          | 265        | 315         |

## Dimensions

### CEP2000 RANGE



The information shown is to be used as a guide only. Specifications are subject to change without notice. All materials handling or lifting jobs should be assessed individually. Pacific Hoists products are NOT to be used for lifting or lowering persons.

#### HEAD OFFICE

24 Foundry Rd,  
Seven Hills NSW 2147 Australia  
| P +61 2 8825 6900  
| F +61 2 8825 6999  
| E sales@pacifichoists.com.au

#### WESTERN AUSTRALIA

Unit 1, 31 Colin Jamieson Drive,  
Welshpool WA 6106 Australia  
| P +61 8 6253 1000  
| F +61 8 9458 9840  
| E sales@pacifichoists.com.au

#### NEW ZEALAND

11 Druces Rd,  
Wiri 2104 Auckland New Zealand  
| P +64 9 263 5566  
| F +64 9 263 5567  
| E info@pacifichoists.co.nz

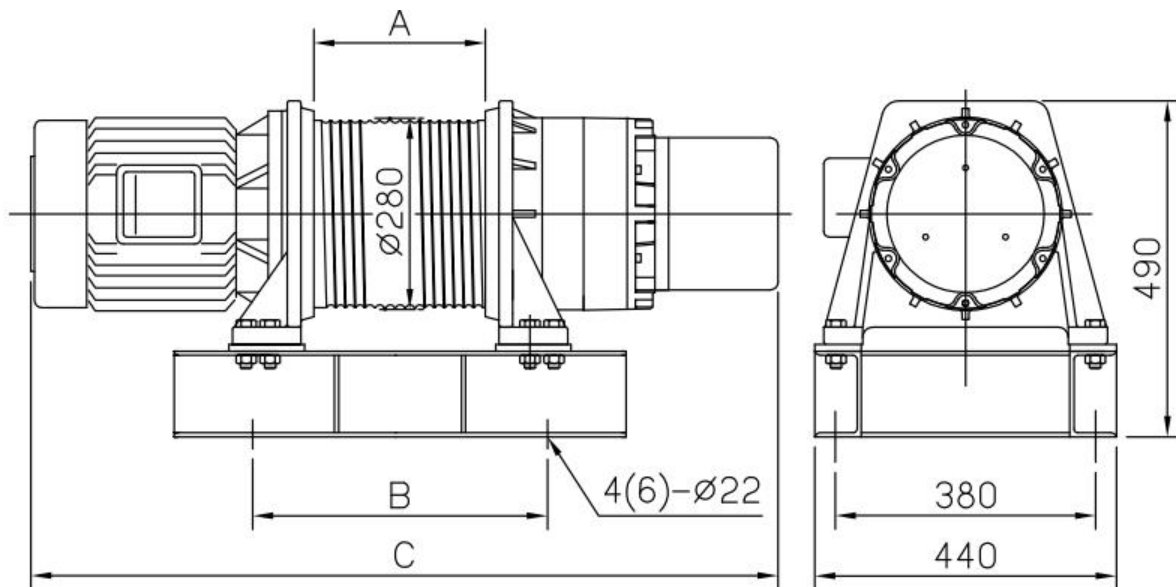
## Specifications

### CEP3001 RANGE

| Model                     | CEP3001-5M   | CEP 3001-8m | CEP3001-14M |
|---------------------------|--------------|-------------|-------------|
| Rated Capacity (kg)       | 3000         |             |             |
| Phase (50Hz)              | Three        |             |             |
| Double Fall Speed (m/min) | 5.8          |             |             |
| Motor (kw x P)            | 5 x 4        |             |             |
| Power Source (50Hz)       | 380/400/415V |             |             |
| Lifting Height (m)        | 5            | 8           | 14          |
| Wire Rope (ø mmxm)        | 12 x 16      | 12 x 22     | 12 x 34     |
| Dimension                 | A (mm)       | 460         | 610         |
|                           | B (mm)       | 640         | 790         |
|                           | C (mm)       | 1300        | 1450        |
| Net Weight (kg)           | 239          | 252         | 283         |
| Gross Weight (kg)         | 289          | 307         | 348         |

## Dimensions

### CEP3001 RANGE



The information shown is to be used as a guide only. Specifications are subject to change without notice. All materials handling or lifting jobs should be assessed individually. Pacific Hoists products are NOT to be used for lifting or lowering persons.



#### HEAD OFFICE

24 Foundry Rd,  
Seven Hills NSW 2147 Australia  
| P +61 2 8825 6900  
| F +61 2 8825 6999  
| E sales@pacifichoists.com.au

#### WESTERN AUSTRALIA

Unit 1, 31 Colin Jamieson Drive,  
Welshpool WA 6106 Australia  
| P +61 8 6253 1000  
| F +61 8 9458 9840  
| E sales@pacifichoists.com.au

#### NEW ZEALAND

11 Druces Rd,  
Wiri 2104 Auckland New Zealand  
| P +64 9 263 5566  
| F +64 9 263 5567  
| E info@pacifichoists.co.nz





# Pacific Hoists

## COMEUP 12 & 24 VOLT DC WINCHES

The Comeup 12 & 24 Volt DC Winches are heavy duty winches; ideal for installation in small trucks and utilities to eliminate the need for manual lifting and pulling. They are constructed from heavy duty material which creates a high performance product with low maintenance; suited for a wide range of applications.

### Features

- Compact, powerful and robust.
- Corrosion resistant.
- 12 or 24 Volt options.
- Strong robust mechanical brake.
- Over-current protection.
- Strong base for horizontal mounting.
- Remote pendant control - 4.4m length
- Weighted hook on DH500 models.
- Galvanised wire rope.
- Duty cycle is 25% ED and maximum frequency of 60 times per hour
- Circuit breakers are supplied with all models

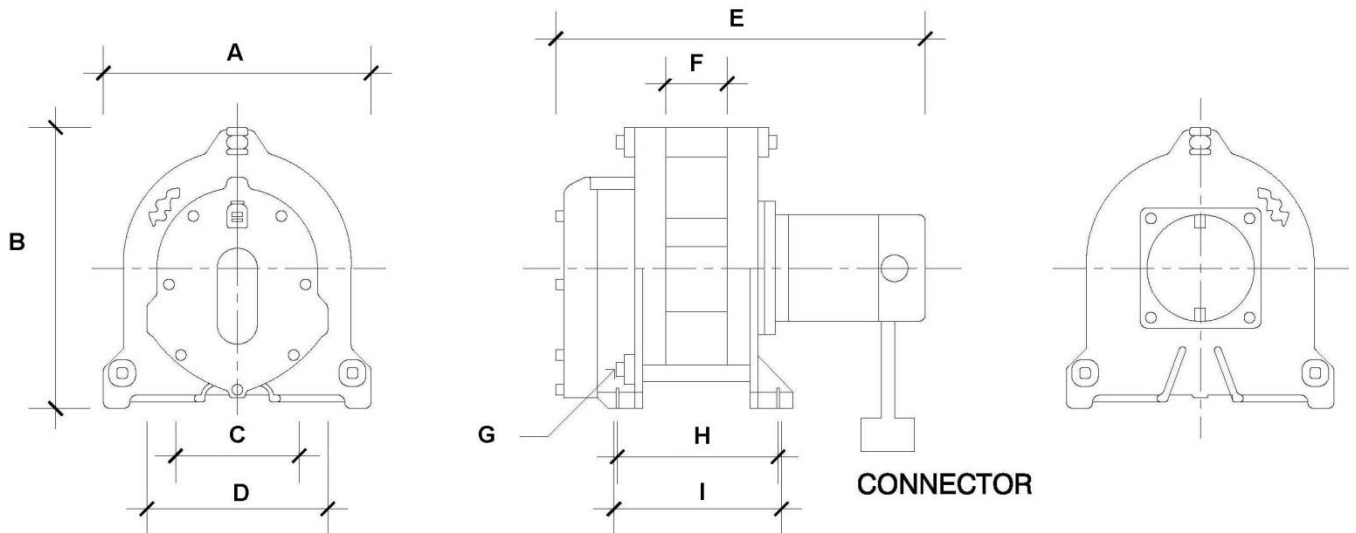


## Specifications

| MODEL                        | DH120  | DH120A | DH300     | DH300A    | DH500     | DH500A    |
|------------------------------|--------|--------|-----------|-----------|-----------|-----------|
| Stock Code                   | PDH120 | PDH125 | PDH300    | PDH305    | PDH500    | PDH505    |
| Rated Capacity (kg)          | 120    | 120    | 300       | 300       | 500       | 500       |
| Voltage (A)                  | DC12V  | DC24V  | DC12V     | DC24V     | DC12V     | DC24V     |
| No Load Amp                  | 7      | 4      | 10        | 5         | 15        | 12        |
| Full Load Amp                | 20     | 10     | 40        | 18        | 50        | 30        |
| Circuit Breaker Rating (Amp) | 20     | 10     | 30        | 15        | 50        | 30        |
| Speed (m/min)                | 5      | 5      | 5         | 5         | 4         | 4         |
| Gear Ratio                   | 56:1   | 56:1   | 240:1     | 240:1     | 276:1     | 276:1     |
| Wire Rope (Ø mmxm)           | Ø4 x 5 | Ø4 x 5 | Ø4.8 x 12 | Ø4.8 x 12 | Ø6.2 x 12 | Ø6.2 x 12 |
| Net Weight (kg)              | 17     | 17     | 27        | 27        | 27        | 27        |

## Dimensions (in mm)

### DH120 – DH120A



The information shown is to be used as a guide only. Specifications are subject to change without notice. All materials handling or lifting jobs should be assessed individually. Pacific Hoists products are NOT to be used for lifting or lowering persons.

### HEAD OFFICE

24 Foundry Rd,  
Seven Hills NSW 2147 Australia  
| P +61 2 8825 6900  
| F +61 2 8825 6999  
| E sales@pacifichoists.com.au

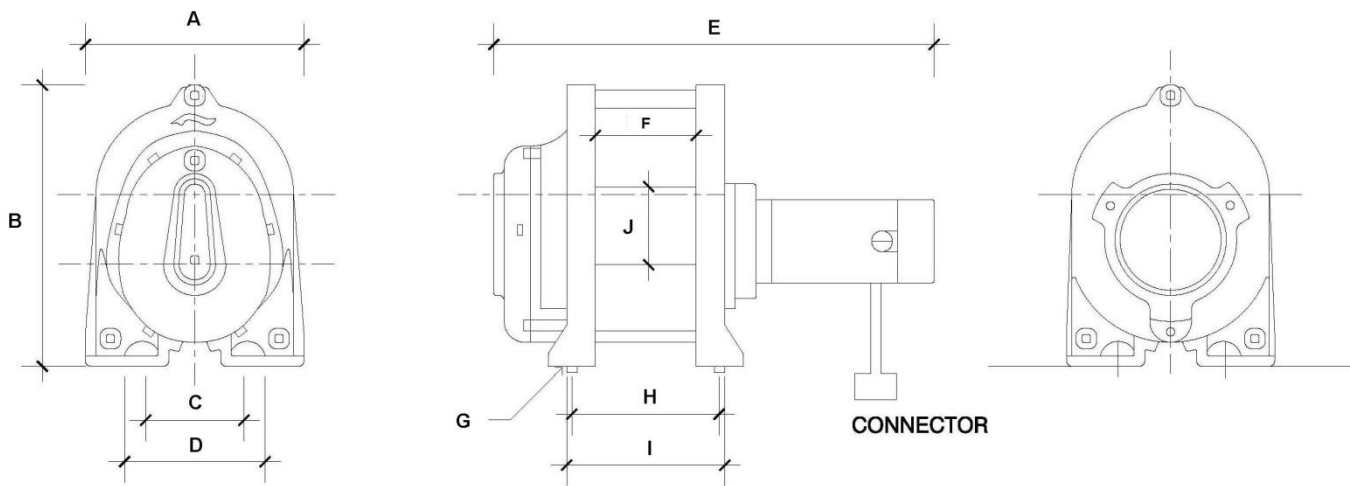
### WESTERN AUSTRALIA

Unit 1, 31 Colin Jamieson Drive,  
Welshpool WA 6106 Australia  
| P +61 8 6253 1000  
| F +61 8 9458 9840  
| E sales@pacifichoists.com.au

### NEW ZEALAND

11 Druces Rd,  
Wiri 2104 Auckland New Zealand  
| P +64 9 263 5566  
| F +64 9 263 5567  
| E info@pacifichoists.co.nz

## DH300 – DH300A



| MODEL | DH120     | DH120A    | DH300     | DH300A    |
|-------|-----------|-----------|-----------|-----------|
| A     | 200       | 200       | 210       | 210       |
| B     | 210       | 210       | 270       | 270       |
| C     | 92        | 92        | 94        | 94        |
| D     | 135       | 135       | 135       | 135       |
| E     | 276       | 276       | 423       | 423       |
| F     | 46        | 46        | 97        | 97        |
| G     | B - Ø10.5 | B - Ø10.5 | B - Ø10.5 | B - Ø10.5 |
| H     | 120       | 120       | 142       | 142       |
| I     | 125       | 125       | 152       | 152       |
| J     | -         | -         | 75        | 75        |



### HEAD OFFICE

24 Foundry Rd,  
Seven Hills NSW 2147 Australia  
| P +61 2 8825 6900  
| F +61 2 8825 6999  
| E sales@pacifichoists.com.au

### WESTERN AUSTRALIA

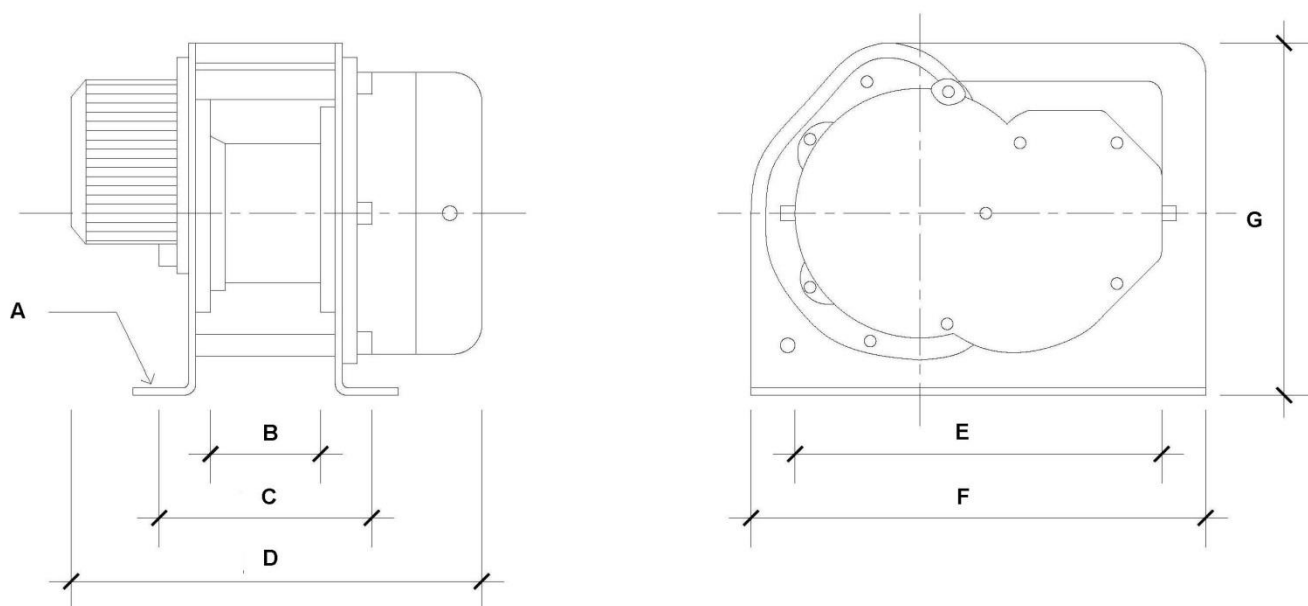
Unit 1, 31 Colin Jamieson Drive,  
Welshpool WA 6106 Australia  
| P +61 8 6253 1000  
| F +61 8 9458 9840  
| E sales@pacifichoists.com.au

### NEW ZEALAND

11 Druces Rd,  
Wiri 2104 Auckland New Zealand  
| P +64 9 263 5566  
| F +64 9 263 5567  
| E info@pacifichoists.co.nz

The information shown is to be used as a guide only. Specifications are subject to change without notice. All materials handling or lifting jobs should be assessed individually. Pacific Hoists products are NOT to be used for lifting or lowering persons.

## DH500 – DH500A



| MODEL | DH500 | DH500A |
|-------|-------|--------|
| A     | Ø14   | Ø14    |
| B     | 75    | 75     |
| C     | 145   | 145    |
| D     | 280   | 280    |
| E     | 250   | 250    |
| F     | 310   | 310    |
| G     | 240   | 240    |



### HEAD OFFICE

24 Foundry Rd,  
Seven Hills NSW 2147 Australia  
| P +61 2 8825 6900  
| F +61 2 8825 6999  
| E sales@pacifichoists.com.au

### WESTERN AUSTRALIA

Unit 1, 31 Colin Jamieson Drive,  
Welshpool WA 6106 Australia  
| P +61 8 6253 1000  
| F +61 8 9458 9840  
| E sales@pacifichoists.com.au

### NEW ZEALAND

11 Druces Rd,  
Wiri 2104 Auckland New Zealand  
| P +64 9 263 5566  
| F +64 9 263 5567  
| E info@pacifichoists.co.nz

The information shown is to be used as a guide only. Specifications are subject to change without notice. All materials handling or lifting jobs should be assessed individually. Pacific Hoists products are NOT to be used for lifting or lowering persons.



# Pacific Hoists

## COMEUP DV RECOVERY 4WD WINCHES

The Comeup Recovery winches are equipped with a heavy duty motor which delivers superior torque output for self-recovery or utility duty automotive applications. The Self-Recovery range (DV9i – DV6000S) provides the maximum line pull capacity from 2,722kg to 6,804kg and are all featuring the strongest power for working in off road environments.

The Utility Duty Winch series (DV2500i – DV4500i) are designed to be used as a trailer winch; providing a line pull of up to 2,041kg. They are dexterous, easy to install and the high torque permanent magnet motor delivers high line pull at lower amp draw. Automatic load-holding mechanical failsafe brake ensures strength and reliability.

### Features

#### DV9i – DV6000S

- All sealed high performance motor supplies superior torque output and faster line speed.
- Three stage planetary gearbox delivers the most reliable and durable performance of winch under tough weather conditions.
- Heavy duty sealed contactor ensures sound waterproof protection.
- Turn clutch by ergonomic T-handle for rapid rope payout. The equally positioned pin holes make it easy to rotate by 36° or 40° increments for special in-bumper applications.
- Protective thermal sensor LED.
- Specific design of brake (CBS) outside the drum is ideally suited to heat-sensitive synthetic rope
- Wireless remote control available separately



DV12 light



Remote POA

## DV2500i – DV4500i

- 12 & 24 Volt reversible motor.
- Power in and power out.
- Tough weather resistant housing with integrated solenoid pack.
- Built-in mechanical safety braking device.
- Sliding pin and ring gear clutch for rapid wire rope payout.
- Remote control with 3m cable.
- Compact and lightweight.
- Wireless remote control available separately



## Specifications

### DV6000S – DV15 RANGE

| MODEL   | DV6000S                     | DV9I                     | DV12                     | DV12 LIGHT               | DV15                     |
|---|-----------------------------|--------------------------|--------------------------|--------------------------|--------------------------|
| Stock Code 12 Volt  | PDV600                      | PDV900                   | PDV920                   | PDV920L                  | PDV950                   |
| Stock Code 24 Volt  | PDV605                      | PDV905                   | PDV922                   | PDV925L                  | PDV955                   |
| Line Pull (kg)  | 2,722                       | 4,082                    | 5,443                    | 5,443                    | 6,804                    |
| Line Speed without Load (m/min)   | 8.0                         | 13.4                     | 8.3                      | 8.0                      | 6.9                      |
| Wire Rope (Ø mmxm)  | 7.1 x 24.4                  | 8.3 x 30.5               | 9.5 x 38                 | 9.5 x 25.0               | 11.1 x 27.0              |
| Wire Rope Type  | Galvanised aircraft A7 x 19 |                          |                          |                          | 6X29-WRC                 |
| Drum Size (mmxmm)   | 63.5 x 125.5                | 63.5 x 229               | 89 x 206                 | 63.5 x 229               | 89 x 206                 |
| Net Weight (kg)   | 17.7                        | 36                       | 40                       | 34                       | 42                       |
| Wireless Remote Control<br>(stock code/ remote)<br>(not included - POA) | RRCDC3<br>3Pin<br>RF-24A    | RRCDC6<br>6Pin<br>RF-24C | RRCDC6<br>6Pin<br>RF-24C | RRCDC6<br>6Pin<br>RF-24C | RRCDC6<br>6Pin<br>RF-24C |



The information shown is to be used as a guide only. Specifications are subject to change without notice. All materials handling or lifting jobs should be assessed individually. Pacific Hoists products are NOT to be used for lifting or lowering persons.

#### HEAD OFFICE

24 Foundry Rd,  
Seven Hills NSW 2147 Australia  
| P +61 2 8825 6900  
| F +61 2 8825 6999  
| E sales@pacifichoists.com.au

#### WESTERN AUSTRALIA

Unit 1, 31 Colin Jamieson Drive,  
Welshpool WA 6106 Australia  
| P +61 8 6253 1000  
| F +61 8 9458 9840  
| E sales@pacifichoists.com.au

#### NEW ZEALAND

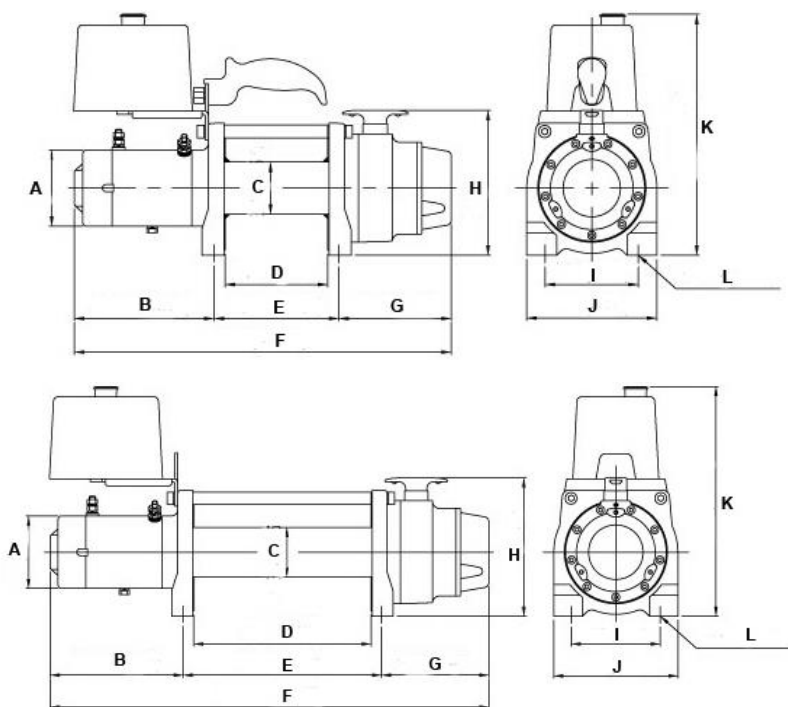
11 Druces Rd,  
Wiri 2104 Auckland New Zealand  
| P +64 9 263 5566  
| F +64 9 263 5567  
| E info@pacifichoists.co.nz

## DV2500i – DV4500i RANGE

| MODEL   | DV2500I                      | DV3500I                      | DV4500I                      |
|---|------------------------------|------------------------------|------------------------------|
| Stock Code 12 Volt  | PDV250                       | PDV350                       | PDV450                       |
| Stock Code 24 Volt  | PDV255                       | PDV355                       | PDV455                       |
| Line Pull (kg)  | 1,134                        | 1,588                        | 2,041                        |
| Line Speed without Load (m/min)   | 5.0                          | 6.5                          | 6.5                          |
| Wire Rope (Ø mmxm)  | 4.8 x 15.2                   | 5.5 x 15.2                   | 6.3 x 15.2                   |
| Wire Rope Type  | Galvanised aircraft A7 x 19  |                              |                              |
| Drum Size (mmxmm)   | 54 x 83                      |                              |                              |
| Net Weight (kg)   | 13.5                         | 13.9                         | 14.2                         |
| Wireless Remote Control<br>(stock code/ remote)<br>(not included - POA) | RRCDC3<br><br>3Pin<br>RF-24A | RRCDC3<br><br>3Pin<br>RF-24A | RRCDC3<br><br>3Pin<br>RF-24A |

## Dimensions (in mm)

### DV6000S



| MODEL | DV6000S | DV6000L |
|-------|---------|---------|
| A     | 93      | 93      |
| B     | 170.6   | 170.6   |
| C     | 63.5    | 63.5    |
| D     | 125.5   | 227     |
| E     | 152.4   | 254     |
| F     | 460     | 561.9   |
| G     | 137     | 137     |
| H     | 177     | 177     |
| I     | 114     | 114     |
| J     | 159     | 159     |
| K     | 294     | 294     |
| L     | 4 - 11  | 4 - 11  |



The information shown is to be used as a guide only. Specifications are subject to change without notice. All materials handling or lifting jobs should be assessed individually. Pacific Hoists products are NOT to be used for lifting or lowering persons.

### HEAD OFFICE

24 Foundry Rd,  
Seven Hills NSW 2147 Australia  
| P +61 2 8825 6900  
| F +61 2 8825 6999  
| E sales@pacifichoists.com.au

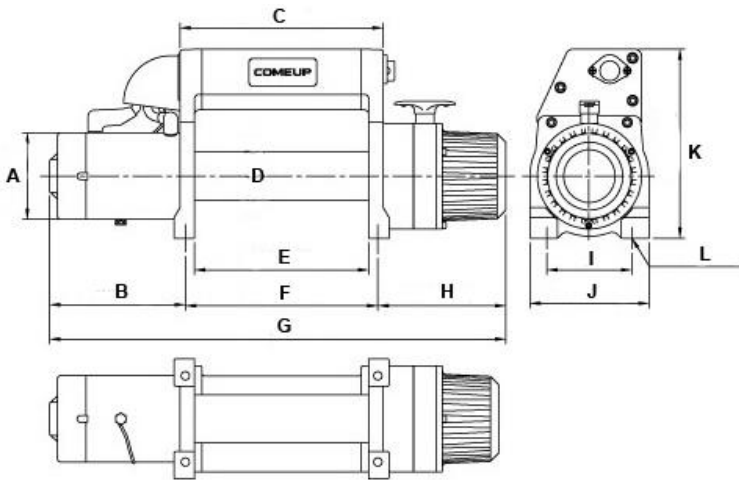
### WESTERN AUSTRALIA

Unit 1, 31 Colin Jamieson Drive,  
Welshpool WA 6106 Australia  
| P +61 8 6253 1000  
| F +61 8 9458 9840  
| E sales@pacifichoists.com.au

### NEW ZEALAND

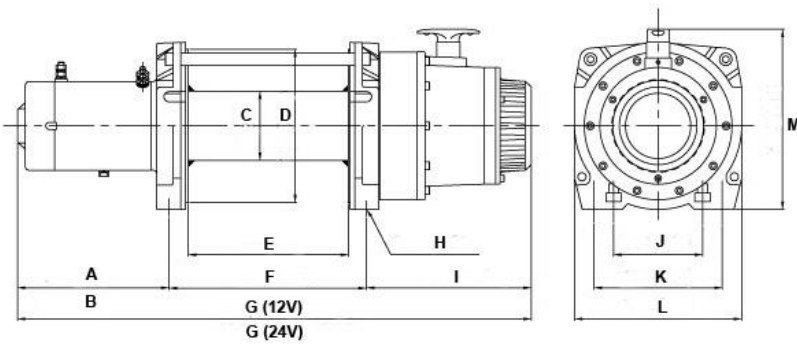
11 Druces Rd,  
Wiri 2104 Auckland New Zealand  
| P +64 9 263 5566  
| F +64 9 263 5567  
| E info@pacifichoists.co.nz

## DV9i



| MODEL | DV9i   |
|-------|--------|
| A     | 114    |
| B     | 179    |
| C     | 268    |
| D     | 63.5   |
| E     | 229    |
| F     | 254    |
| G     | 602    |
| H     | 169    |
| I     | 114    |
| J     | 159    |
| K     | 250    |
| L     | 4 – 11 |

## DV12 – DV15



| MODEL   | DV12   | DV15   |
|---------|--------|--------|
| A       | 195    | 195    |
| B       | 170    | 170    |
| C       | 89     | 89     |
| D       | 197    | 197    |
| E       | 206    | 206    |
| F       | 254    | 254    |
| G (12V) | 661    | 661    |
| G (24V) | 636    | 636    |
| H       | 8 – 13 | 8 – 13 |
| I       | 212    | 212    |
| J       | 114    | 114    |
| K       | 165    | 165    |
| L       | 215    | 215    |
| M       | 232    | 232    |



The information shown is to be used as a guide only. Specifications are subject to change without notice. All materials handling or lifting jobs should be assessed individually. Pacific Hoists products are NOT to be used for lifting or lowering persons.

### HEAD OFFICE

24 Foundry Rd,  
Seven Hills NSW 2147 Australia  
| P +61 2 8825 6900  
| F +61 2 8825 6999  
| E sales@pacifichoists.com.au

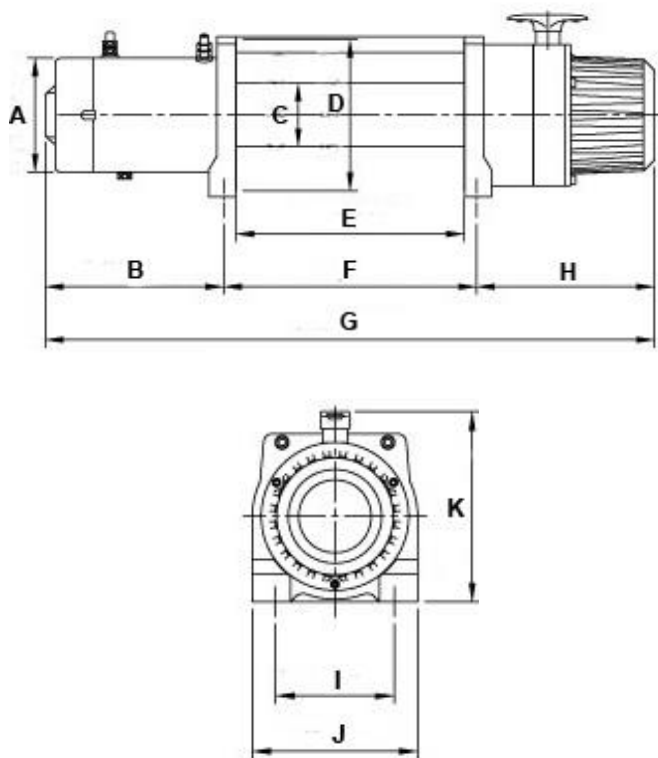
### WESTERN AUSTRALIA

Unit 1, 31 Colin Jamieson Drive,  
Welshpool WA 6106 Australia  
| P +61 8 6253 1000  
| F +61 8 9458 9840  
| E sales@pacifichoists.com.au

### NEW ZEALAND

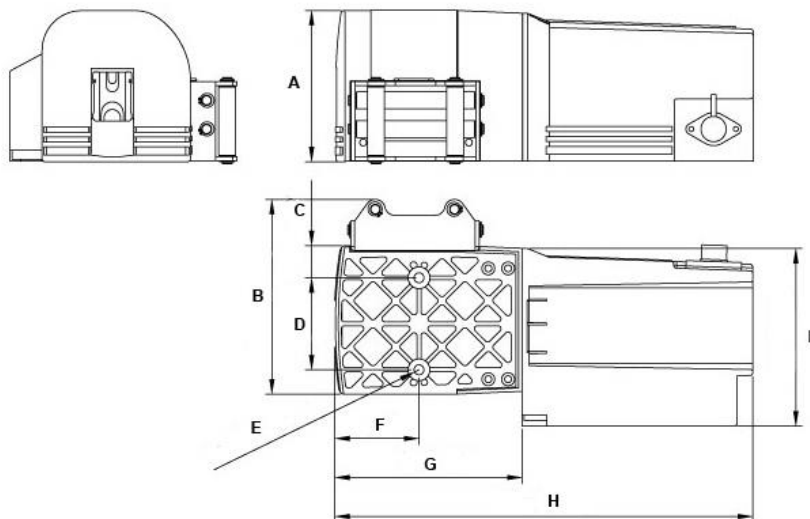
11 Druces Rd,  
Wiri 2104 Auckland New Zealand  
| P +64 9 263 5566  
| F +64 9 263 5567  
| E info@pacifichoists.co.nz

## DV12 light



| MODEL | DV12 LIGHT 12V | DV12 LIGHT 24V |
|-------|----------------|----------------|
| A     | Ø114           | Ø114           |
| B     | 179            | 154            |
| C     | Ø63.5          | Ø63.5          |
| D     | Ø151.5         | Ø151.5         |
| E     | 229            | 229            |
| F     | 254            | 254            |
| G     | 612            | 587            |
| H     | 179            | 179            |
| I     | 114            | 114            |
| J     | 159            | 159            |
| K     | 182.5          | 182.5          |

## DV2500i – DV4500i



| MODEL | DV2500i | DV3500i | DV4500i |
|-------|---------|---------|---------|
| A     | 153     | 153     | 153     |
| B     | 197     | 197     | 197     |
| C     | 32      | 32      | 32      |
| D     | 93      | 93      | 93      |
| E     | 2-10    | 2-10    | 2-10    |
| F     | 86      | 86      | 86      |
| G     | 190     | 190     | 190     |
| H     | 423     | 423     | 423     |
| I     | 180     | 180     | 180     |



The information shown is to be used as a guide only. Specifications are subject to change without notice. All materials handling or lifting jobs should be assessed individually. Pacific Hoists products are NOT to be used for lifting or lowering persons.

### HEAD OFFICE

24 Foundry Rd,  
Seven Hills NSW 2147 Australia  
| P +61 2 8825 6900  
| F +61 2 8825 6999  
| E sales@pacifichoists.com.au

### WESTERN AUSTRALIA

Unit 1, 31 Colin Jamieson Drive,  
Welshpool WA 6106 Australia  
| P +61 8 6253 1000  
| F +61 8 9458 9840  
| E sales@pacifichoists.com.au

### NEW ZEALAND

11 Druces Rd,  
Wiri 2104 Auckland New Zealand  
| P +64 9 263 5566  
| F +64 9 263 5567  
| E info@pacifichoists.co.nz





# Pacific Hoists

## COMEUP CAPSTAN WINCH

The Comeup Capstan Winch is suited to tackle the toughest wall, ground and underground pulling applications, due to its dual capacity of 2500kg and 1500kg. This product is precision engineered and constructed from heavy duty material which creates a high performance product with low maintenance.

### Features

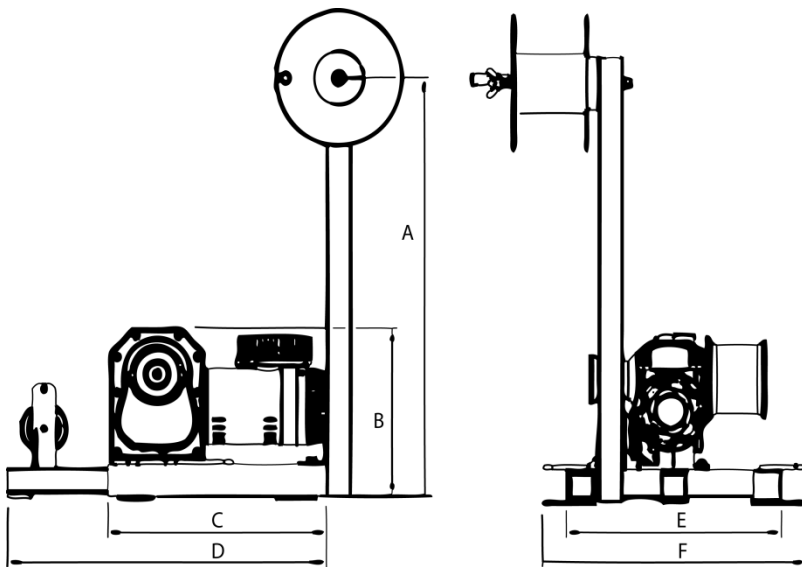
- 240 volt single phase cable puller.
- Dual pulling capacity of 2500 kg and 1500 kg.
- Dual speeds vary according to drum size.
- Over load protection switch which ensure automatic shut-off.
- Electromagnetic spring-applied fail safe brake.
- Heavy duty high efficiency ball bearings on all running surfaces.
- Rugged high power induction motor for proven reliability.
- Case hardened gear train for maximum mechanical efficiency.
- Rope storage reeler.
- Supplied with 3m power supply cable.
- Suitable rope diameter 7mm to 12mm. Please note that rope is not supplied as standard.
- A minimum of six wraps of rope around the drum is necessary to support the rated load.
- Do not use the Comeup Capstan Winch as a lifting device for vertical lifting.



## Specifications

| MODEL                       | H2500           |            |
|-----------------------------|-----------------|------------|
| Drum Type                   | Large Drum      | Small Drum |
| Stock Code                  | CAP250          |            |
| Rated Capacity              | 1500            | 2500       |
| Max. Pulling Duration (min) | 15              | 15         |
| Motor Output                | 240V 0.6kW IP44 |            |
| Rope Speed(m/min)           | 4.0             | 2.5        |
| Control                     | Foot Control    |            |
| Gear Ratio                  | 154:1           |            |
| Net Weight (kg)             | 60              | 60         |

## Dimensions (in mm)



| MODEL | H2500 |
|-------|-------|
| A     | 850   |
| B     | 320   |
| C     | 450   |
| D     | 655   |
| E     | 440   |
| F     | 540   |



The information shown is to be used as a guide only. Specifications are subject to change without notice. All materials handling or lifting jobs should be assessed individually. Pacific Hoists products are NOT to be used for lifting or lowering persons.

### HEAD OFFICE

24 Foundry Rd,  
Seven Hills NSW 2147 Australia  
| P +61 2 8825 6900  
| F +61 2 8825 6999  
| E sales@pacifichoists.com.au

### WESTERN AUSTRALIA

Unit 1, 31 Colin Jamieson Drive,  
Welshpool WA 6106 Australia  
| P +61 8 6253 1000  
| F +61 8 9458 9840  
| E sales@pacifichoists.com.au

### NEW ZEALAND

11 Druces Rd,  
Wiri 2104 Auckland New Zealand  
| P +64 9 263 5566  
| F +64 9 263 5567  
| E info@pacifichoists.co.nz



# Pacific Hoists

## COMEUP HYDRAULIC RECOVERY WINCHES

Comeup Hydraulic Recovery Winches feature supreme power and reliability to handle the most demanding situations. They are designed for heavy duty applications on car transporters, tilt-tray vehicles, tractors, trucks and fire / rescue vehicles and have the ability to run continuously in every condition.

### Features

- Highly efficient and constant operating high torque motor.
- Fast and variable recovery speeds for high work rate.
- Two stage planetary gear train for greater pulling force.
- Free spool T-handle with easy operation for rapid wire rope payout.
- Drag brake and over-center valve providing full 100% braking.
- European Standard EN14492-1 compliant; meets SAE J706, CE Machinery Directive 2006/42/EC and REMSA Standards.
- 10:1 D/d ratio and 2:1 wire rope strength allow severe duty vehicles and commercial recovery.
- Highly efficient pulling device, NOT recommended for lifting applications.
- Higher capacities available. Please refer to the Comeup Bison range.
- Wire rope not included.



HV8



HV10



HV12



HV15

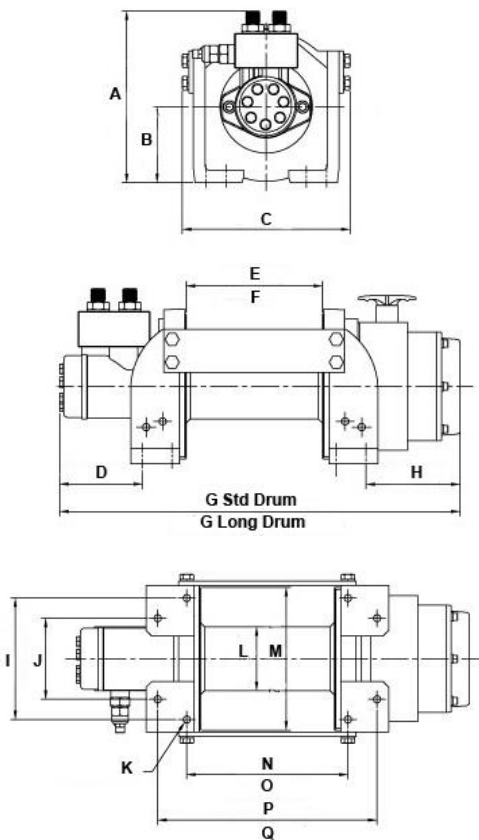
## Specifications

| MODEL                    | HV8                                       | HV10      | HV12      | HV15      |
|--------------------------|---|-----------|-----------|-----------|
| Line Pull (kg)           | 3630                                      | 4535      | 5440      | 6800      |
| Line Speed (m/min)       | 15  | 14        | 10        | 9         |
| Operating Pressure (Bar) | 150                                       |           |           |           |
| Wire Rope (Ø mmxm)       | 11.1 x 27                                 | 12 x 34   | 14 x 27   | 16 x 24   |
| Winch Construction       | Aluminum die cast housing with steel drum |           |           |           |
| Drum Size Std (mmxmm)    | 90 x 190                                  | 102 x 253 | 114 x 255 | 127 x 255 |
| Gear Ratio               | 16 : 1                                    | 16 : 1    | 19.4 : 1  | 19.4 : 1  |
| Net Weight (kg)          | 43.3                                      | 46.6      | 87        | 88        |

\*Wire rope not included

## Dimensions (in mm)

HV8 – HV10



| MODEL         | HV8        | HV10       |
|---------------|------------|------------|
| A             | 243.2      | 243.2      |
| B             | 107.5      | 107.5      |
| C             | 238        | 238        |
| D             | 115.4      | 117.9      |
| E             | 190        | 235        |
| F             | 253        | -          |
| G (Std Drum)  | 557.6      | 623.1      |
| G (Long Drum) | 620.6      | -          |
| H             | 131        | 131        |
| I             | 171.2      | 171.2      |
| J             | 114        | 114        |
| K             | 8-M10XP1.5 | 8-M10XP1.5 |
| L             | 90         | 102        |
| M             | 201.5      | 201.5      |
| N             | 228.6      | -          |
| O             | 291.6      | 291.6      |
| P             | 311.2      | -          |
| Q             | 374.2      | 374.2      |



The information shown is to be used as a guide only. Specifications are subject to change without notice. All materials handling or lifting jobs should be assessed individually. Pacific Hoists products are NOT to be used for lifting or lowering persons.

### HEAD OFFICE

24 Foundry Rd,  
Seven Hills NSW 2147 Australia  
| P +61 2 8825 6900  
| F +61 2 8825 6999  
| E sales@pacifichoists.com.au

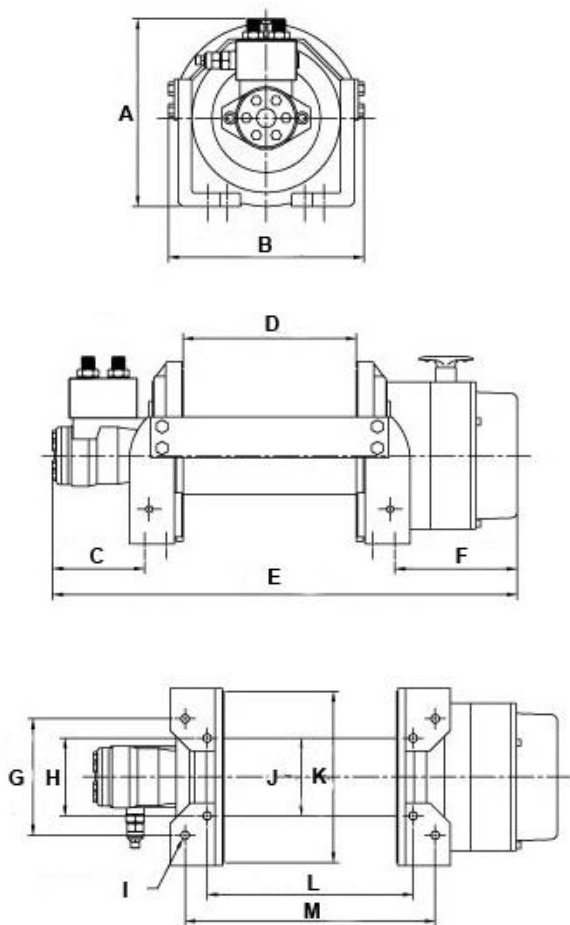
### WESTERN AUSTRALIA

Unit 1, 31 Colin Jamieson Drive,  
Welshpool WA 6106 Australia  
| P +61 8 6253 1000  
| F +61 8 9458 9840  
| E sales@pacifichoists.com.au

### NEW ZEALAND

11 Druces Rd,  
Wiri 2104 Auckland New Zealand  
| P +64 9 263 5566  
| F +64 9 263 5567  
| E info@pacifichoists.co.nz

## HV12 – HV15



| MODEL | HV12        | HV15        |
|-------|-------------|-------------|
| A     | 276         | 276         |
| B     | 289         | 289         |
| C     | 135.4       | 139.9       |
| D     | 255         | 255         |
| E     | 684         | 688.5       |
| F     | 180.1       | 180.1       |
| G     | 171.2       | 171.2       |
| H     | 114         | 114         |
| I     | 8-M12XP1.75 | 8-M12XP1.75 |
| J     | 114         | 127         |
| K     | 252         | 252         |
| L     | 303.5       | 303.5       |
| M     | 368.5       | 368.5       |



### HEAD OFFICE

24 Foundry Rd,  
Seven Hills NSW 2147 Australia  
| P +61 2 8825 6900  
| F +61 2 8825 6999  
| E sales@pacifichoists.com.au

### WESTERN AUSTRALIA

Unit 1, 31 Colin Jamieson Drive,  
Welshpool WA 6106 Australia  
| P +61 8 6253 1000  
| F +61 8 9458 9840  
| E sales@pacifichoists.com.au

### NEW ZEALAND

11 Druces Rd,  
Wiri 2104 Auckland New Zealand  
| P +64 9 263 5566  
| F +64 9 263 5567  
| E info@pacifichoists.co.nz

The information shown is to be used as a guide only. Specifications are subject to change without notice. All materials handling or lifting jobs should be assessed individually. Pacific Hoists products are NOT to be used for lifting or lowering persons.





# Pacific Hoists

## COMEUP BISON SERIES HYDRAULIC RECOVERY WINCHES

The new Bison Series of Comeup feature Hydraulic Recovery Winches with a line pull capacity of 9,070kg and 13,600kg and are therefore extremely suitable for heavy duty trailers, tilt tray trucks and commercial recovery applications. The highly efficient motor is powered by a PTO driven pump with variable recovery speed for a high working rate. The Bison Series is definitely a force to reckon with!

### Features

- Powered by a PTO (power take off unit) driven pump with variable recovery speed for a high working rate.
- 155.7 cm<sup>3</sup>/rev highly efficient and constant operating torque motor with 9,070kg / 20,000lb or 13,600kg / 30,000lb capacity.
- Hardened 2 stage planetary gear train with 30:1 gear ratio for Bison 20 and 41:1 gear ratio for Bison 30 to provide faster line speed.
- Built-in air clutch for rapid wire rope payout.
- The Multi-Disc Brake (MDB) patented for holding full load.
- Great for heavy duty trailers, tilt tray trucks and commercial recovery applications.
- Roller fairlead, cable tensioner and two ways counterbalance valve supplied.
- Complies with SAE J706, CE machinery directive 2006/42/EC or EN 14492-1:2006 Power Driven Winches.
- Available with rated line pull of 9,070kg (Bison 20) or 13,600kg (Bison 30).
- The Bison 30 is also available with an operation pressure of 150bar / 2,175psi.
- Both the Bison 20 and Bison 30 are available in a long drum version.
- Wire rope not included



Bison 20



Bison 30

## Specifications

| MODEL                       | BISON 20                                  | BISON 30                       |
|-----------------------------|---|--------------------------------|
| Stock Code                  | PHV200                                    | PHV300                         |
| Line Pull (kg)              | 9070                                      | 13600                          |
| Line Speed (m/min)          | 7.1                                       | 5.0                            |
| Operating Pressure (Bar)    | 175 (2540 psi)                            | 175 (2540 psi)                 |
| Max Oil Flow (l/min)        | 60  | 60                             |
| Wire Rope Std Drum (Ø mmxm) | 14x43<br>(14x80 for long drum)            | 16x43<br>(16x75 for long drum) |
| Winch Construction          | Aluminum die cast housing with steel drum |                                |
| Gear Ratio                  | 30 : 1                                    | 41 : 1                         |
| Net Weight (kg)             | 135                                       | 160                            |

\* Wire rope not included

## Line Pull & Rope Capacity

### BISON 20

| LAYER OF WIRE ROPE | PULL BY LAYER (KG / LB) | TOTAL ROPE ON DRUM (M / FT) |           |           |           | LINE SPEED<br>At 60 l/min (15.9 g/min)<br>mpn / fpm |
|--------------------|-------------------------|-----------------------------|-----------|-----------|-----------|---|
|                    |                         | Standard Drum               |           | Long Drum |           |   |
|                    |                         | 14mm rope                   | 16mm rope | 14mm rope | 16mm rope |   |
| 1 <sup>st</sup>    | 9070 / 20000            | 7 / 23                      | 6 / 20    | 12 / 39   | 11 / 36   | 7.1 / 23  |
| 2 <sup>nd</sup>    | 7719 / 17017            | 15 / 49                     | 13 / 43   | 27 / 89   | 24 / 79   | 8.3 / 27  |
| 3 <sup>rd</sup>    | 6719 / 14813            | 24 / 79                     | 21 / 69   | 43 / 141  | 39 / 128  | 9.5 / 31  |
| 4 <sup>th</sup>    | 5948 / 13113            | 34 / 112                    | 30 / 98   | 62 / 203  | 55 / 180  | 10.8 / 35   |
| 5 <sup>th</sup>    | 5335 / 11762            | 43 / 141                    |           | 80 / 262  |           | 12 / 39   |



The information shown is to be used as a guide only. Specifications are subject to change without notice. All materials handling or lifting jobs should be assessed individually. Pacific Hoists products are NOT to be used for lifting or lowering persons.

#### HEAD OFFICE

24 Foundry Rd,  
Seven Hills NSW 2147 Australia  
| P +61 2 8825 6900  
| F +61 2 8825 6999  
| E sales@pacifichoists.com.au

#### WESTERN AUSTRALIA

Unit 1, 31 Colin Jamieson Drive,  
Welshpool WA 6106 Australia  
| P +61 8 6253 1000  
| F +61 8 9458 9840  
| E sales@pacifichoists.com.au

#### NEW ZEALAND

11 Druces Rd,  
Wiri 2104 Auckland New Zealand  
| P +64 9 263 5566  
| F +64 9 263 5567  
| E info@pacifichoists.co.nz

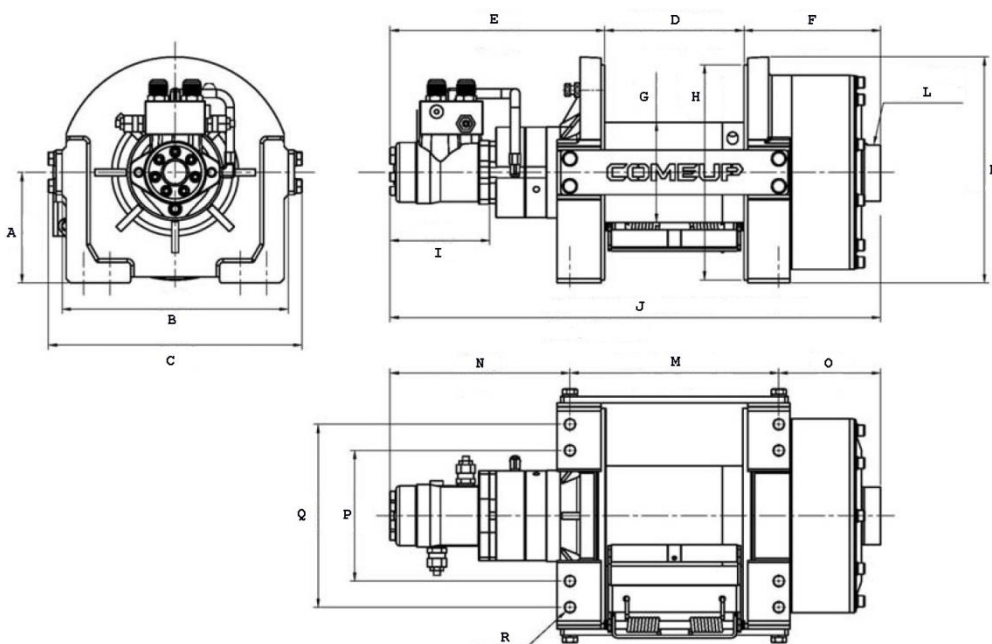
## Line Pull & Rope Capacity (cont.)

### BISON 30

| LAYER OF WIRE ROPE | PULL BY LAYER (KG / LB) | TOTAL ROPE ON DRUM (M / FT) |           | LINE SPEED                            |
|--------------------|-------------------------|-----------------------------|-----------|---------------------------------------|
|                    |                         | Standard Drum               | Long Drum | At 60 l/min (15.9 g/min)<br>mpn / fpm |
| 1 <sup>st</sup>    | 13600 / 30000           | 6 / 20                      | 11 / 36   | 5.0 / 16                              |
| 2 <sup>nd</sup>    | 11438 / 25216           | 14 / 44                     | 25 / 82   | 5.9 / 19                              |
| 3 <sup>rd</sup>    | 9864 / 21745            | 22 / 73                     | 40 / 131  | 6.9 / 23                              |
| 4 <sup>th</sup>    | 8670 / 19115            | 32 / 104                    | 58 / 190  | 7.8 / 26                              |
| 5 <sup>th</sup>    | 7735 / 17052            | 43 / 141                    | 75 / 246  | 8.8 / 29                              |

## Dimensions (in mm)

### BISON 20



| MODEL         | BISON 20   |
|---------------|------------|
| A             | 161        |
| B             | 330        |
| C             | 370        |
| D (Std Drum)  | 203.2      |
| D (Long Drum) | 355.6      |
| E             | 313.3      |
| F             | 199.2      |
| G             | ∅146       |
| H             | ∅314       |
| I             | 145.5      |
| J (Std Drum)  | 715.7      |
| J (Long Drum) | 868.1      |
| K             | 329.5      |
| L             | PF-1/4"-19 |
| M (Std Drum)  | 304.8      |
| M (Long Drum) | 457.2      |
| N             | 262.5      |
| O             | 148.4      |
| P             | 190.5      |
| Q             | 266.7      |
| R             | 8-M16      |



The information shown is to be used as a guide only. Specifications are subject to change without notice. All materials handling or lifting jobs should be assessed individually. Pacific Hoists products are NOT to be used for lifting or lowering persons.

#### HEAD OFFICE

24 Foundry Rd,  
Seven Hills NSW 2147 Australia  
| P +61 2 8825 6900  
| F +61 2 8825 6999  
| E sales@pacifichoists.com.au

#### WESTERN AUSTRALIA

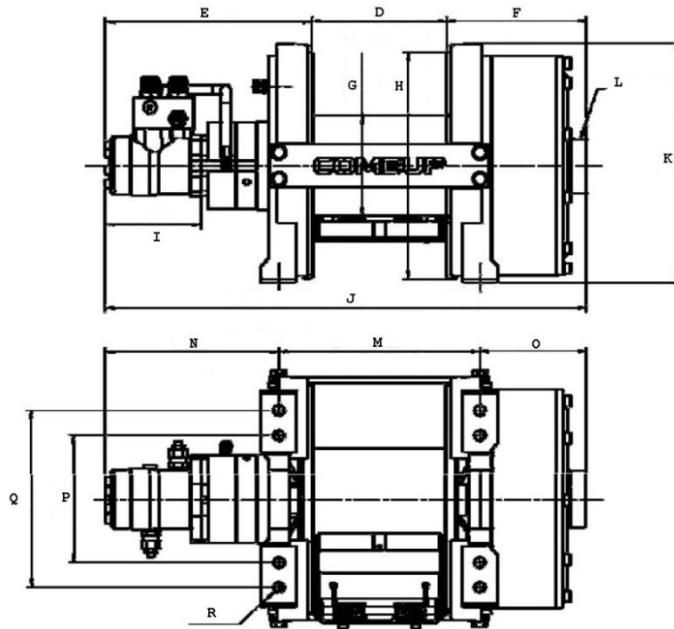
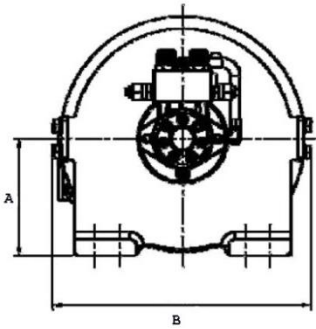
Unit 1, 31 Colin Jamieson Drive,  
Welshpool WA 6106 Australia  
| P +61 8 6253 1000  
| F +61 8 9458 9840  
| E sales@pacifichoists.com.au

#### NEW ZEALAND

11 Druces Rd,  
Wiri 2104 Auckland New Zealand  
| P +64 9 263 5566  
| F +64 9 263 5567  
| E info@pacifichoists.co.nz

## Dimensions (in mm) (cont.)

### BISON 30



| MODEL         | BISON 30   |
|---------------|------------|
| A             | 177        |
| B             | 392        |
| D (Std Drum)  | 203.2      |
| D (Long Drum) | 355.6      |
| E             | 313.8      |
| F             | 212.2      |
| G             | ∅152.8     |
| H             | ∅343       |
| I             | 145.5      |
| J (Std Drum)  | 729.3      |
| J (Long Drum) | 881.7      |
| K             | 362        |
| L             | PF-1/4"-19 |
| M (Std Drum)  | 304.8      |
| M (Long Drum) | 457.2      |
| N             | 264.1      |
| O             | 161.4      |
| P             | 190.5      |
| Q             | 266.7      |
| R             | 8-M16      |



#### HEAD OFFICE

24 Foundry Rd,  
Seven Hills NSW 2147 Australia  
| P +61 2 8825 6900  
| F +61 2 8825 6999  
| E sales@pacifichoists.com.au

#### WESTERN AUSTRALIA

Unit 1, 31 Colin Jamieson Drive,  
Welshpool WA 6106 Australia  
| P +61 8 6253 1000  
| F +61 8 9458 9840  
| E sales@pacifichoists.com.au

#### NEW ZEALAND

11 Druces Rd,  
Wiri 2104 Auckland New Zealand  
| P +64 9 263 5566  
| F +64 9 263 5567  
| E info@pacifichoists.co.nz

The information shown is to be used as a guide only. Specifications are subject to change without notice. All materials handling or lifting jobs should be assessed individually. Pacific Hoists products are NOT to be used for lifting or lowering persons.



# Pacific Hoists

## PACIFIC GENERAL PURPOSE HAND WINCHES

The Pacific General Purpose Hand Winches are compact, lightweight and a cost-effective solution for a variety of applications. They can be supplied with a powder-coated or a marine-coated corrosion resistant finish, depending on your application.

The Salt Spray Test is an international standardised test method used to check the corrosion resistance of coated samples. Protective coatings provide corrosion resistance to metallic parts made of steel, zinc and aluminium alloys or brass. Since these coatings can provide a high corrosion resistance through the intended life of the part in use, it is necessary to check this by other means than normal outside exposure. The Salt Spray Test produces an accelerated corrosive attack to the coated samples, in order to predict its suitability in use as a protective finish. The appearance of corrosion products (i.e. rust) is evaluated after a period of time. Test duration depends on the resistance of the coating; the more resistant the coating is, the longer the period in testing without showing signs of corrosion. After 1,000 hours of the Salt Spray Test, the Pacific Brake Winches did not show any sign of corrosion and the coating was still intact.

OPC Kylan Coating is a new and unique process which uses baked-on, non-toxic, environmentally friendly, organic, macromolecular monomer coating compound. This, combined with aluminium and zinc, provides a highly corrosion resistant coating on steel. By using OPC Kylan Coating with stainless steel fasteners and fittings on all of the winches, Pacific Hoists has a unique range of corrosion resistant winches which can stand up to over 1000 hours of salt spray testing.

### Features

- Compact, lightweight and rugged construction.
- Mechanical components enclosed for protection and safety.
- Available with a powder-coated or a marine-coated corrosion resistant finish.
- Rope to drum fixing clamp provided.



HW1500

- High precision construction minimises gear noise.
- HW1500 is a worm drive version
- Heat-treated gears.
- Strong removable handles.
- Available with optional rope or strap.



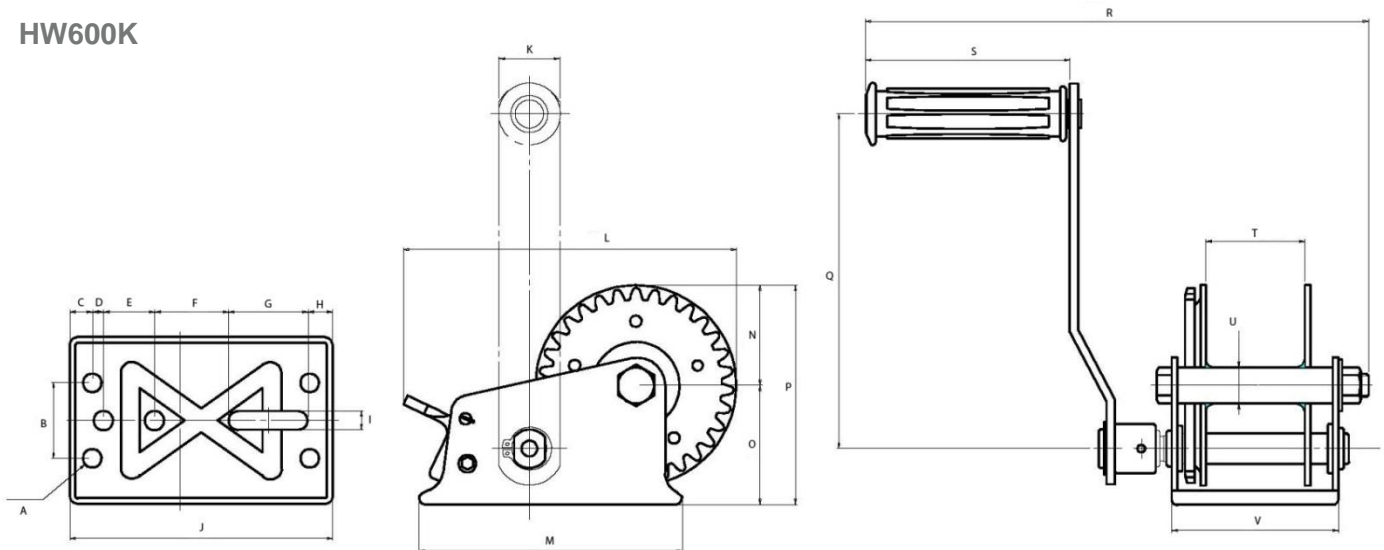
HW1200K

## Specifications

| MODEL                          | HW600K    | HW1200K   | HW1500        |
|--------------------------------|-----------|-----------|---------------|
| <b>Pulling Capacity (kg)</b>   | 280       | 550       | 680           |
| <b>Lifting Capacity</b>        | N/A       | N/A       | 340           |
| <b>Finish</b>                  | Kylan     | Kylan     | Powder-coated |
| <b>Gear Ratio</b>              | 3.1 : 1   | 4.1 : 1   | 41.0 : 1      |
| <b>Handle Length (mm)</b>      | 175       | 210       | 195           |
| <b>Hub Diameter (mm)</b>       | Ø19       | Ø34       | Ø48           |
| <b>Cable Diameter (mm x m)</b> | Ø4.0 x 30 | Ø4.8 x 20 | Ø5.6 x 23     |
| <b>Net. Weight (kg)</b>        | 2.26      | 2.84      | 5.0           |

## Dimensions (in mm)

### HW600K



The information shown is to be used as a guide only. Specifications are subject to change without notice. All materials handling or lifting jobs should be assessed individually. Pacific Hoists products are NOT to be used for lifting or lowering persons.

### HEAD OFFICE

24 Foundry Rd,  
Seven Hills NSW 2147 Australia  
| P +61 2 8825 6900  
| F +61 2 8825 6999  
| E sales@pacifichoists.com.au

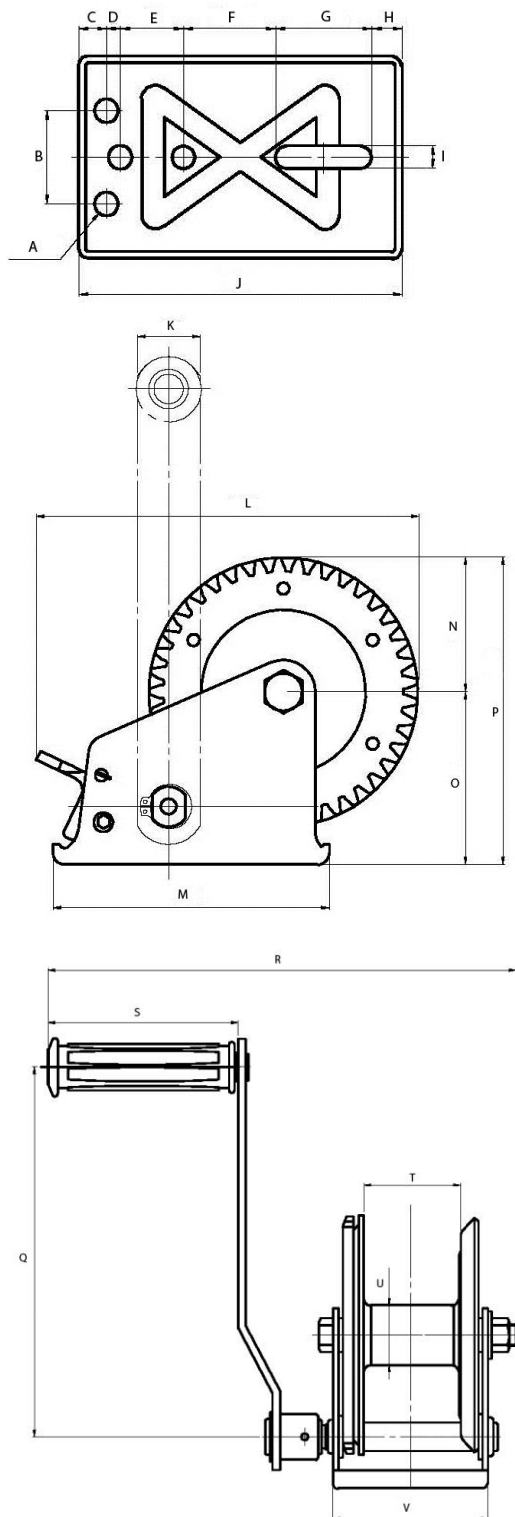
### WESTERN AUSTRALIA

Unit 1, 31 Colin Jamieson Drive,  
Welshpool WA 6106 Australia  
| P +61 8 6253 1000  
| F +61 8 9458 9840  
| E sales@pacifichoists.com.au

### NEW ZEALAND

11 Druces Rd,  
Wiri 2104 Auckland New Zealand  
| P +64 9 263 5566  
| F +64 9 263 5567  
| E info@pacifichoists.co.nz

# HW1200K



| MODEL | HW600K  | HW1200K |
|-------|---------|---------|
| A     | 6 – Ø10 | 4 – Ø10 |
| B     | 40      | 40      |
| C     | 12      | 12      |
| D     | 6       | 6       |
| E     | 27      | 27      |
| F     | 39      | 39.5    |
| G     | 42      | 41.5    |
| H     | 13      | 13      |
| I     | 10      | 10      |
| J     | 139     | 139     |
| K     | 32      | 32      |
| L     | 176     | 193     |
| M     | 139     | 139     |
| N     | 53      | 68      |
| O     | 63      | 87      |
| P     | 116     | 155     |
| Q     | 177     | 210     |
| R     | 266     | 266     |
| S     | 108     | 108     |
| T     | 52.3    | 55      |
| U     | Ø19     | Ø34     |
| V     | 88      | 88      |



The information shown is to be used as a guide only. Specifications are subject to change without notice. All materials handling or lifting jobs should be assessed individually. Pacific Hoists products are NOT to be used for lifting or lowering persons.

## HEAD OFFICE

24 Foundry Rd,  
Seven Hills NSW 2147 Australia  
| P +61 2 8825 6900  
| F +61 2 8825 6999  
| E sales@pacifichoists.com.au

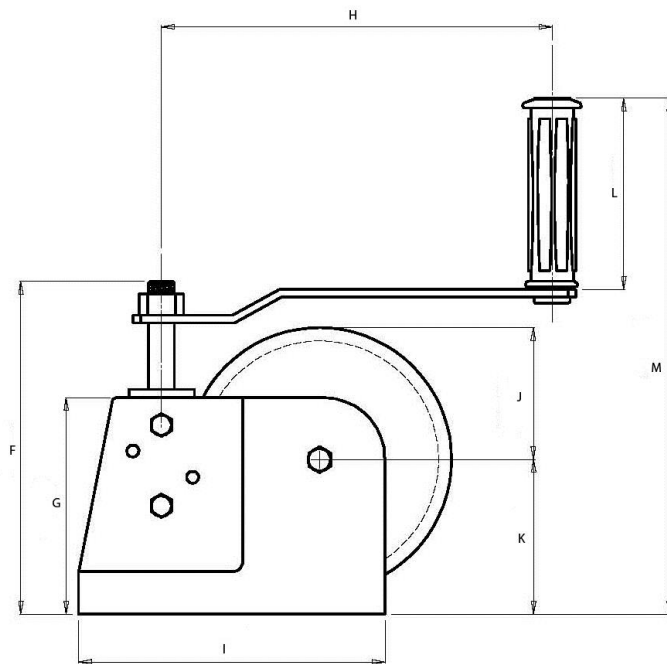
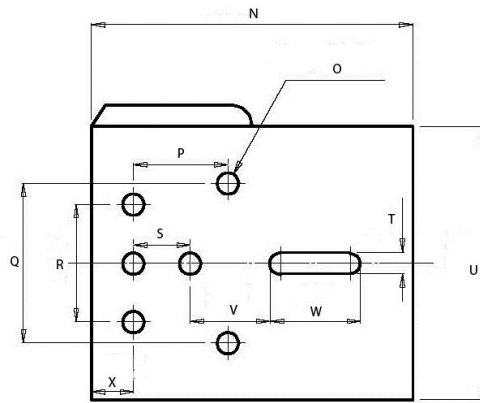
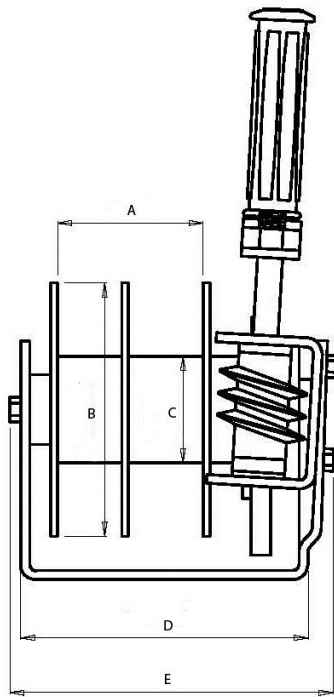
## WESTERN AUSTRALIA

Unit 1, 31 Colin Jamieson Drive,  
Welshpool WA 6106 Australia  
| P +61 8 6253 1000  
| F +61 8 9458 9840  
| E sales@pacifichoists.com.au

## NEW ZEALAND

11 Druces Rd,  
Wiri 2104 Auckland New Zealand  
| P +64 9 263 5566  
| F +64 9 263 5567  
| E info@pacifichoists.co.nz

# HW1500



| MODEL | HW1500  |
|-------|---------|
| A     | 70      |
| B     | Ø115    |
| C     | Ø48     |
| D     | 130     |
| E     | 151     |
| F     | 161     |
| G     | 108     |
| H     | 195     |
| I     | 153     |
| J     | 67.5    |
| K     | 75      |
| L     | 108     |
| M     | 268     |
| N     | 153     |
| O     | 6 – Ø10 |
| P     | 45      |
| Q     | 76      |
| R     | 56      |
| S     | 27      |
| T     | 10      |
| U     | 130     |
| V     | 38      |
| W     | 43      |
| X     | 20      |



The information shown is to be used as a guide only. Specifications are subject to change without notice. All materials handling or lifting jobs should be assessed individually. Pacific Hoists products are NOT to be used for lifting or lowering persons.

## HEAD OFFICE

24 Foundry Rd,  
Seven Hills NSW 2147 Australia  
| P +61 2 8825 6900  
| F +61 2 8825 6999  
| E sales@pacifichoists.com.au

## WESTERN AUSTRALIA

Unit 1, 31 Colin Jamieson Drive,  
Welshpool WA 6106 Australia  
| P +61 8 6253 1000  
| F +61 8 9458 9840  
| E sales@pacifichoists.com.au

## NEW ZEALAND

11 Druces Rd,  
Wiri 2104 Auckland New Zealand  
| P +64 9 263 5566  
| F +64 9 263 5567  
| E info@pacifichoists.co.nz



# Pacific Hoists

## PACIFIC BRAKE WINCHES

The Pacific Brake Winches are compact, lightweight and a cost-effective solution for a variety of applications. They can be used for both pulling and lifting purposes and comply to the Australian Standards AS1418.2 when correctly fitted with the approved wire rope and fittings. They can be supplied with a powder-coated, a marine-coated corrosion resistant finish or in stainless steel, depending on your application.

OPC Kylan Coating is a new and unique process which uses baked-on, non-toxic, environmentally friendly, organic, macromolecular monomer coating compound. This, combined with aluminium and zinc, provides a highly corrosion resistant coating on steel. By using OPC Kylan Coating with stainless steel fasteners and fittings on all of the winches, Pacific Hoists has a unique range of corrosion resistant winches which can stand up to over 1000 hours of salt spray testing.

The Salt Spray Test is an international standardised test method used to check the corrosion resistance of coated samples. Protective coatings provide corrosion resistance to metallic parts made of steel, zinc and aluminium alloys or brass. Since these coatings can provide a high corrosion resistance through the intended life of the part in use, it is necessary to check this by other means than normal outside exposure. The Salt Spray Test produces an accelerated corrosive attack to the coated samples, in order to predict its suitability in use as a protective finish. The appearance of corrosion products (i.e. rust) is evaluated after a period of time. Test duration depends on the resistance of the coating; the more resistant the coating is, the longer the period in testing without showing signs of corrosion. After 1,000 hours of the Salt Spray Test, the Pacific Brake Winches did not show any sign of corrosion and the coating was still intact.

### Features

- Positive Weston-style brake will hold the load in any position.
- Compact, lightweight and rugged construction.
- Mechanical components enclosed for protection and safety.
- Available with a powder-coated or a marine-coated corrosion resistant finish.
- Rope to drum fixing clamp provide



BHW Powder-coated



BHW Kylan-coated

- BHW1200 available as a noiseless model
- AS1418.2 Compliance applies when correctly fitted with approved wire rope and fittings.
- BHW models available with marine-coated Kylan finish.
- BHW1200 / BHW1800 / BHW2600 also available in stainless steel.
- Heat-treated gears.
- Strong removable handles.
- High precision construction minimises gear noise.
- Available with optional rope



**BHW Stainless Steel**



**SF-2200 Powder-coated**

## Specifications

| MODEL                            | BHW-800       | BHW-1200      | BHW-1800      | BHW-2600      | SF-2200       |
|----------------------------------|---------------|---------------|---------------|---------------|---------------|
| <b>Pulling Capacity (kg)</b>     | 370           | 545           | 820           | 1200          | 1700          |
| <b>Lifting Capacity</b>          | 180           | 270           | 410           | 600           | 850           |
| <b>Hand Force Required (kg)</b>  | 14.5          | 15            | 22            | 19            | 16            |
| <b>Standard Finish</b>           | Powder-coated | Powder-coated | Powder-coated | Powder-coated | Powder-coated |
| <b>Gear Ratio</b>                | 4.1 : 1       | 4.1 : 1       | 5.0 : 1       | 10 : 1        | 22.2 : 1      |
| <b>Handle Length (mm)</b>        | 160           | 210           | 320           | 320           | 300           |
| <b>Hub Diameter (mm)</b>         | Ø40           | Ø50           | Ø70           | Ø80           | Ø60           |
| <b>Cable Diameter (mm x m)</b>   | Ø4.0 x 36     | Ø5.0 x 23     | Ø6.0 x 24     | Ø8.0 x 16     | Ø8.0 x 32     |
| <b>Net. Weight (kg)</b>          | 3.0           | 3.3           | 8.0           | 10.3          | 13.5          |
| <b>Kylan Finish Available</b>    | Yes           | Yes           | Yes           | Yes           | No            |
| <b>Stainless Steel Available</b> | No            | Yes           | Yes           | Yes           | No            |
| <b>Noiseless Available</b>       | No            | Yes           | No            | No            | No            |



The information shown is to be used as a guide only. Specifications are subject to change without notice. All materials handling or lifting jobs should be assessed individually. Pacific Hoists products are NOT to be used for lifting or lowering persons.

### HEAD OFFICE

24 Foundry Rd,  
Seven Hills NSW 2147 Australia  
| P +61 2 8825 6900  
| F +61 2 8825 6999  
| E sales@pacifichoists.com.au

### WESTERN AUSTRALIA

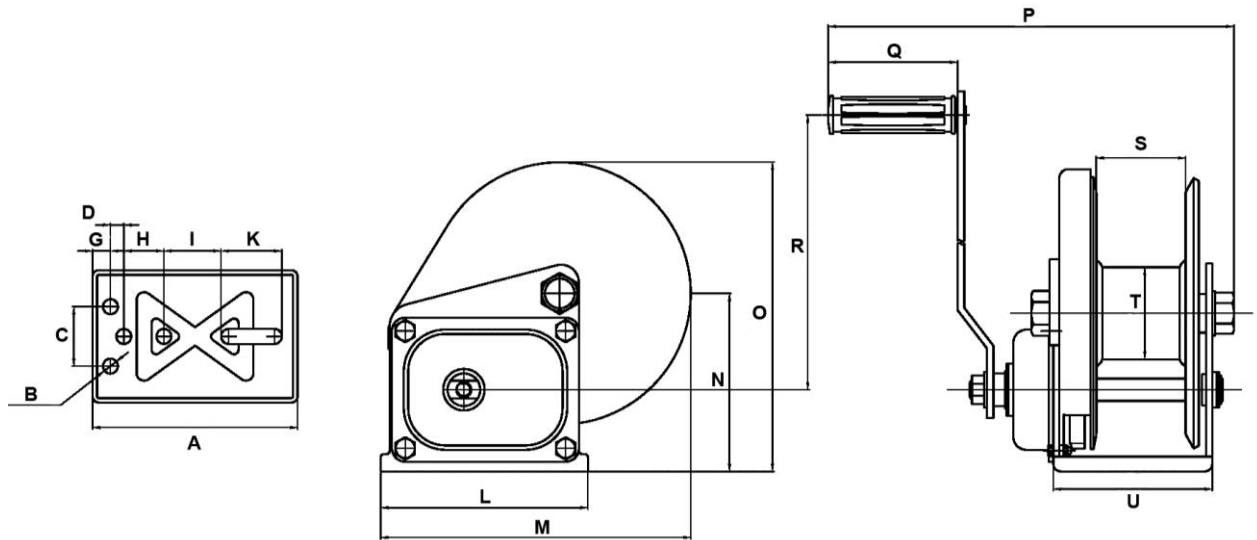
Unit 1, 31 Colin Jamieson Drive,  
Welshpool WA 6106 Australia  
| P +61 8 6253 1000  
| F +61 8 9458 9840  
| E sales@pacifichoists.com.au

### NEW ZEALAND

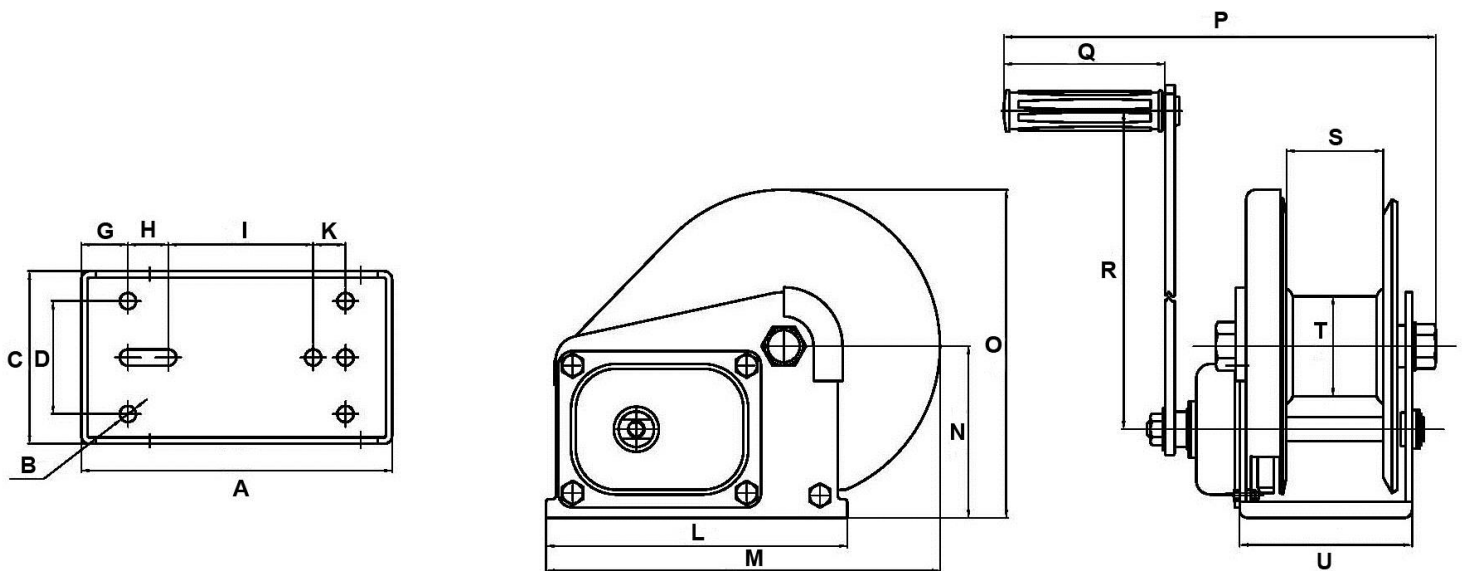
11 Druces Rd,  
Wiri 2104 Auckland New Zealand  
| P +64 9 263 5566  
| F +64 9 263 5567  
| E info@pacifichoists.co.nz

## Dimensions (in mm)

### BHW800 / BHW1200



### BHW1800



The information shown is to be used as a guide only. Specifications are subject to change without notice. All materials handling or lifting jobs should be assessed individually. Pacific Hoists products are NOT to be used for lifting or lowering persons.

#### HEAD OFFICE

24 Foundry Rd,  
Seven Hills NSW 2147 Australia  
| P +61 2 8825 6900  
| F +61 2 8825 6999  
| E sales@pacifichoists.com.au

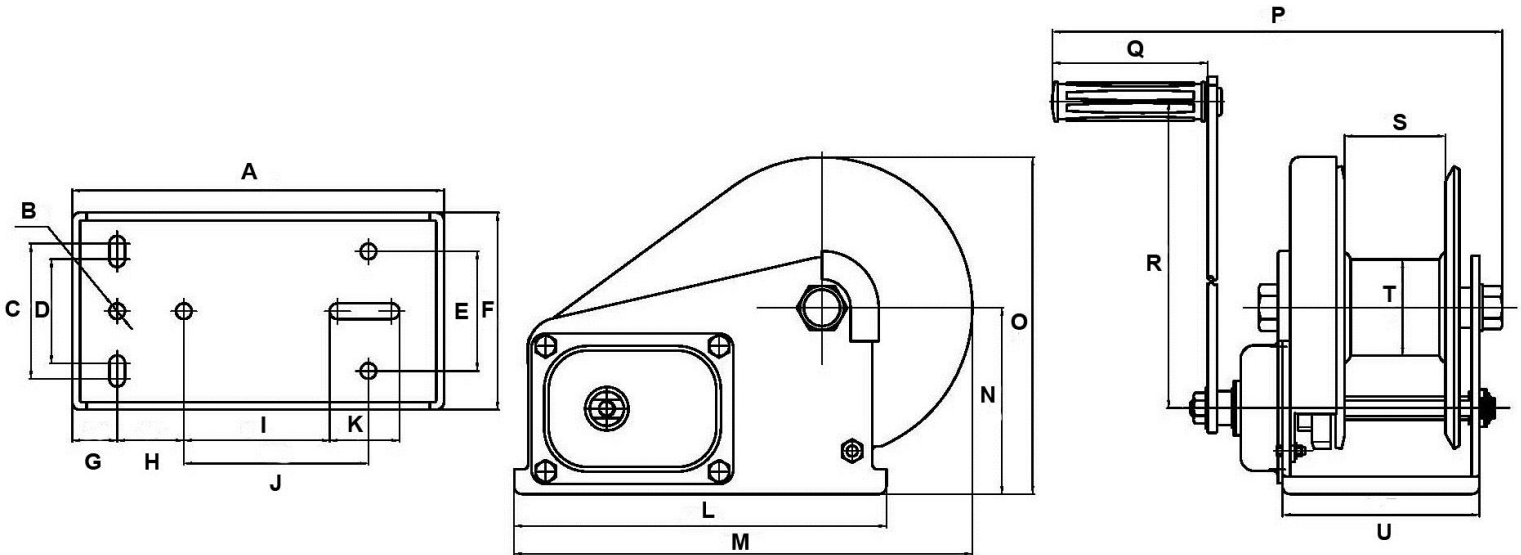
#### WESTERN AUSTRALIA

Unit 1, 31 Colin Jamieson Drive,  
Welshpool WA 6106 Australia  
| P +61 8 6253 1000  
| F +61 8 9458 9840  
| E sales@pacifichoists.com.au

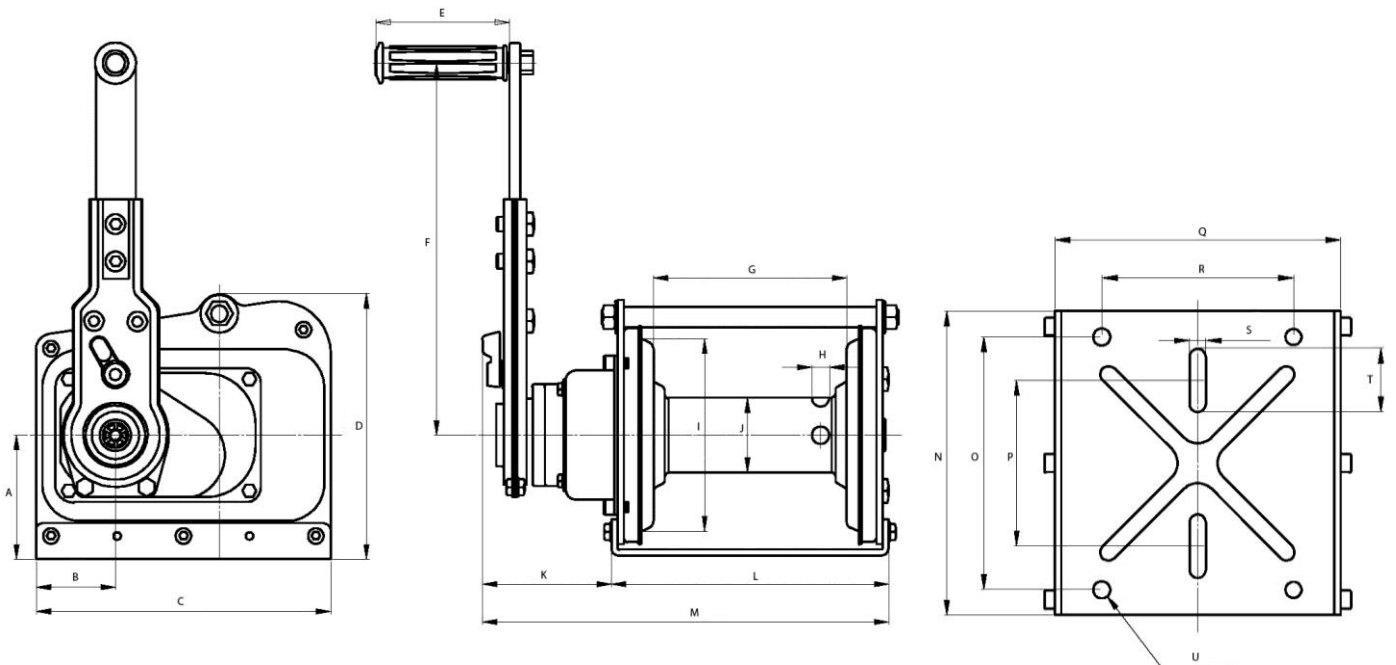
#### NEW ZEALAND

11 Druces Rd,  
Wiri 2104 Auckland New Zealand  
| P +64 9 263 5566  
| F +64 9 263 5567  
| E info@pacifichoists.co.nz

## BHW2600



## SF2200



The information shown is to be used as a guide only. Specifications are subject to change without notice. All materials handling or lifting jobs should be assessed individually. Pacific Hoists products are NOT to be used for lifting or lowering persons.

### HEAD OFFICE

24 Foundry Rd,  
Seven Hills NSW 2147 Australia  
| P +61 2 8825 6900  
| F +61 2 8825 6999  
| E sales@pacifichoists.com.au

### WESTERN AUSTRALIA

Unit 1, 31 Colin Jamieson Drive,  
Welshpool WA 6106 Australia  
| P +61 8 6253 1000  
| F +61 8 9458 9840  
| E sales@pacifichoists.com.au

### NEW ZEALAND

11 Druces Rd,  
Wiri 2104 Auckland New Zealand  
| P +64 9 263 5566  
| F +64 9 263 5567  
| E info@pacifichoists.co.nz

| MODEL | BHW800  | BHW1200 | BHW1800 | BHW2600 | SF2200  |
|-------|---------|---------|---------|---------|---------|
| A     | 138     | 138     | 193     | 240     | 100     |
| B     | 4 – Ø10 | 4 – Ø10 | Ø10     | Ø10     | 64.3    |
| C     | 40      | 40      | 107     | 87      | 238     |
| D     | 9       | 9       | 70      | 67      | 214     |
| E     | -       | -       | -       | 77      | 108     |
| F     | -       | -       | -       | 127     | 300     |
| G     | 12      | 12      | 29      | 29      | 156     |
| H     | 27      | 27      | 25      | 43      | Ø16     |
| I     | 38.5    | 38.5    | 90      | 94      | Ø155    |
| J     | -       | -       | -       | 119     | Ø60     |
| K     | 41      | 41      | 20      | 45      | 118     |
| L     | 138     | 138     | 187     | 240     | 224     |
| M     | 190     | 190     | 245     | 295     | 342     |
| N     | 85      | 85      | 106.5   | 120     | 238     |
| O     | 160     | 160     | 204     | 217     | 198     |
| P     | 275     | 275     | 285     | 300     | 130     |
| Q     | 108     | 108     | 108     | 108     | 224     |
| R     | 160     | 210     | 320     | 320     | 150     |
| S     | 55      | 52      | 60      | 65      | 13      |
| T     | Ø40     | Ø50     | Ø70     | Ø82     | 50      |
| U     | 89      | 89      | 107     | 127     | 4 – Ø13 |



The information shown is to be used as a guide only. Specifications are subject to change without notice. All materials handling or lifting jobs should be assessed individually. Pacific Hoists products are NOT to be used for lifting or lowering persons.

#### HEAD OFFICE

24 Foundry Rd,  
Seven Hills NSW 2147 Australia  
| P +61 2 8825 6900  
| F +61 2 8825 6999  
| E sales@pacifichoists.com.au

#### WESTERN AUSTRALIA

Unit 1, 31 Colin Jamieson Drive,  
Welshpool WA 6106 Australia  
| P +61 8 6253 1000  
| F +61 8 9458 9840  
| E sales@pacifichoists.com.au

#### NEW ZEALAND

11 Druces Rd,  
Wiri 2104 Auckland New Zealand  
| P +64 9 263 5566  
| F +64 9 263 5567  
| E info@pacifichoists.co.nz





# Pacific Hoists

## PACIFIC WIRE ROPE PULLING HOISTS

Pacific Wire Rope Pulling Hoists are lever operated hand winches offering a light weight, strong performance and substantial operating life with the added advantages of lower operator effort and less rope wear. They are designed to be operated by one person to perform tasks such as lifting, pulling and general movement of loads. Small, compact and light weight, Pacific Pull Lift Winches can be easily transported and used for many applications including construction, pipe laying, movement and positioning of machinery and the loading and unloading of heavy and bulky goods for transportation.

### Features

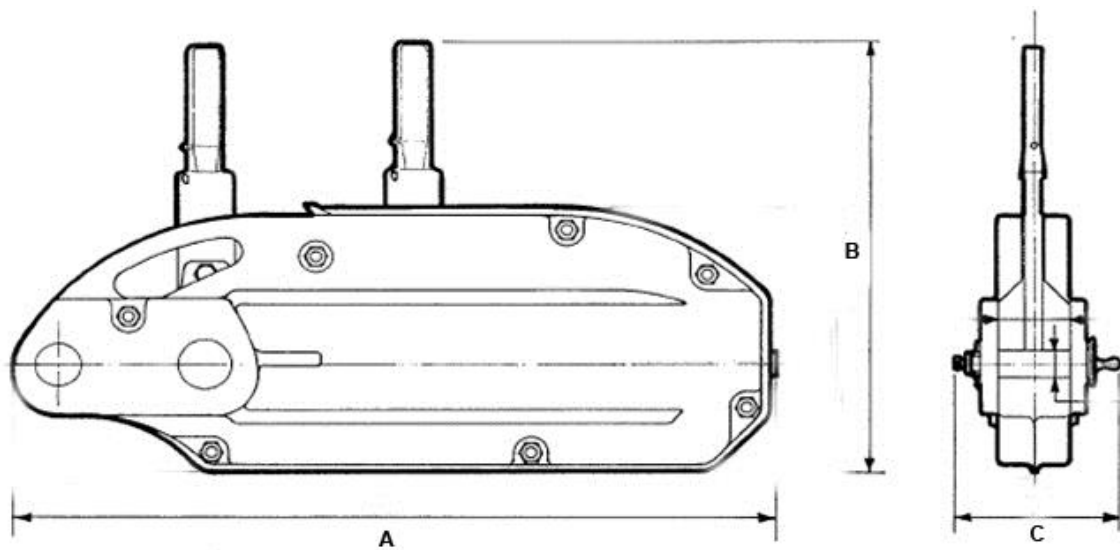
- Compact and lightweight design which makes this product suitable for use in confined or limited space.
- Easy to operate and anchor onto a variety of structures; making it suitable for most applications.
- Operates in any position; horizontal, vertical and angled.
- All steel construction (including rope) and contains no aluminum which makes this product suitable for many industries including underground mining applications.
- Ideal for 4WD and off road applications.



## Specifications

| MODEL                                      | PPL080 | PPL160 | PPL320 |
|--|--------|--------|--------|
| Rated Capacity (kg)                        | 800    | 1600   | 3200   |
| Forward Lever Action Angle Range (degrees) | 77     | 81     | 111    |
| Wire Rope (Ø in mm)                        | 8.3    | 11.0   | 16.0   |
| Wire Rope Safety Factor (times)            | 5      | 5      | 5      |
| Static Load Safety Factor (times)          | 4      | 4      | 4      |
| Max. Dynamic Load (kg)                     | 1250   | 2000   | 4000   |
| Net Weight without Rope (kg)               | 6      | 11     | 22     |
| Wire Rope Standard Length (m)              | 20     | 20     | 20     |

## Dimensions (in mm)



| MODEL | PPL080 | PPL160 | PPL320 |
|-------|--------|--------|--------|
| A     | 428    | 545    | 660    |
| B     | 230    | 260    | 320    |
| C     | 65     | 97     | 116    |



The information shown is to be used as a guide only. Specifications are subject to change without notice. All materials handling or lifting jobs should be assessed individually. Pacific Hoists products are NOT to be used for lifting or lowering persons.

### HEAD OFFICE

24 Foundry Rd,  
Seven Hills NSW 2147 Australia  
| P +61 2 8825 6900  
| F +61 2 8825 6999  
| E sales@pacifichoists.com.au

### WESTERN AUSTRALIA

Unit 1, 31 Colin Jamieson Drive,  
Welshpool WA 6106 Australia  
| P +61 8 6253 1000  
| F +61 8 9458 9840  
| E sales@pacifichoists.com.au

### NEW ZEALAND

11 Druces Rd,  
Wiri 2104 Auckland New Zealand  
| P +64 9 263 5566  
| F +64 9 263 5567  
| E info@pacifichoists.co.nz