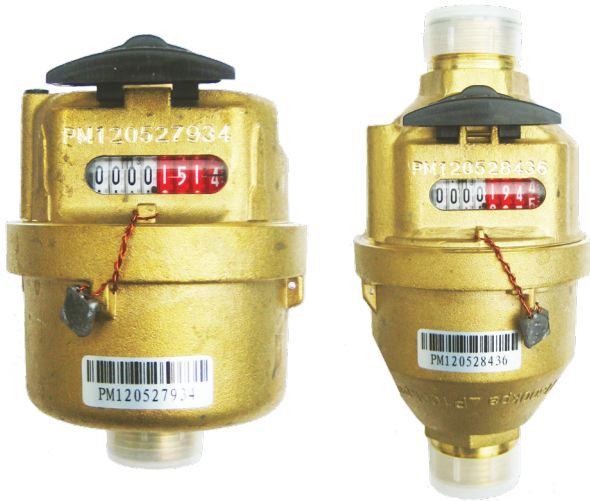
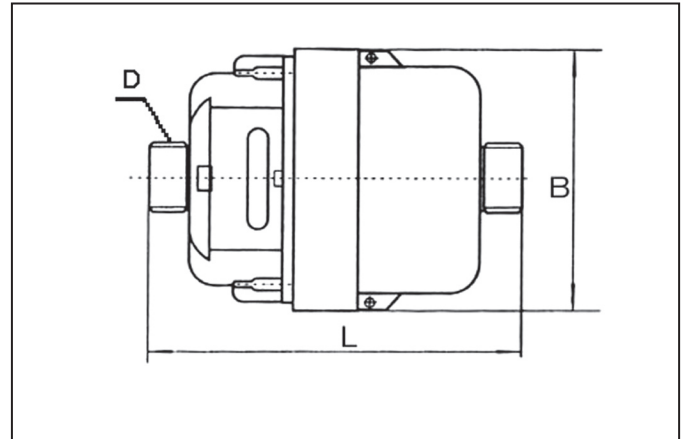


## VOLUMETRIC ROTARY PISTON METERS

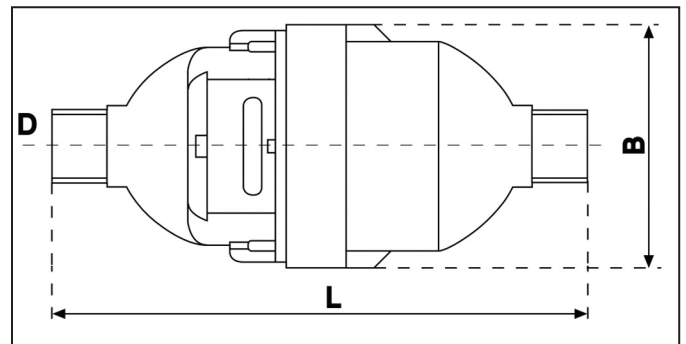
ASM LXH - 15 ~ 20mm - SA1508 - Cold Water Meter.



**DIMENSIONS ASM LXH - 15mm**



**DIMENSIONS ASM LXH - 20mm**



**APPLICATION:**

Measures the volume of cold potable water passing through a pipeline.

**FEATURES:**

- Complete DZR brass body.
- Rotating piston provides accurate volume measurement.
- Revolutionary grooved piston for improved, durability and performance.
- Accurate measurement even at a low flow rate of 4l/h
- Optimum accuracy and performance in any position.
- Clear, easily read, liquid sealed 8 digit counter.
- Durable tamper proof construction for stable performance.
- Internal non return valve and strainer.
- Each meter has a unique serial number.
- Pulse prepared.
- Inlet & Outlet threads compatible with I.S.O metric sizes.

**MAXIMUM PERMISSIBLE ERRORS:**

- In the lower zone from (qmin) inclusive up to but excluding (qt) is  $\pm 5\%$ .
- In the upper zone from (qt) inclusive up to and including (qs) is  $\pm 2\%$ .

**WORKING CONDITIONS:**

- Water temperature:  $\leq 50^\circ\text{C}$ .
- Water pressure:  $\leq 1.6\text{MPa}$  (16bar).

**COMPLIANCE STANDARD:**

- Conforms to ISO4064 Class C Standard.
- Conforms to SANS 1529-1.

**INSTALLATION REQUIREMENTS:**

- May be installed on a horizontal or vertical pipeline
- Pipeline must be flushed before installation.
- Meter should be constantly full of water during operation.

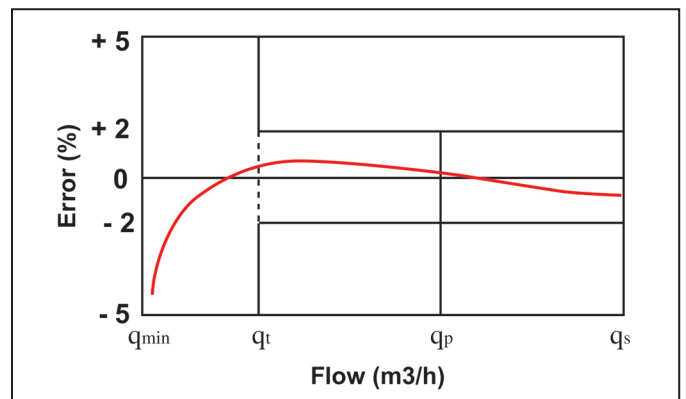
**MAIN TECHNICAL SPECIFICATIONS**

Type	Size (mm)	Class	Maximum Flow (qs)	Nominal Flow (qp)	Transitional Flow (qt)	Minimum Flow (qmin)	Minimum Reading	Maximum Reading
			m <sup>3</sup> /h		L/h		m <sup>3</sup>	
LXH-15	15/18	C	3	1.5	22.5	15	0	9999
		D			17.25	11.25		
LXH-20	20	C	5	2.5	37.5	25	0	9999

**DIMENSIONS TABLE**

Type	Length (mm)	Width (mm)	Connection Thread	Weight (kg)
LXH-15	115/165/170	86/88	G3/4B	0.85/1.1/1.2
LXH-20	134/165/190	90	G1B	1.3/1.6/1.8

**FLOW ERROR CURVE**



**PRESSURE LOSS DATA**

