



Y-1 AC YOKE LIGHTWEIGHT, SUPER-TOUGH IN-FIELD MAGNETIZING UNIT

The Magnaflux® Y-1 Yoke is loaded with features designed to improve in-field NDT inspections of oil and gas industry tubular goods and equipment. Its innovative lightweight ergonomic design reduces muscle fatigue, making it one of the lightest, most comfortable yokes on the market today. But light in weight doesn't mean short on power or durability. The Y-1 is packed with 25% greater lifting power, wider leg cross sections for improved part contact, and stainless steel leg shields, all included to make sure that it will stand up to years of NDT inspection and field use.

Y-1 YOKE FEATURES

- Lightweight ergonomic design reduces muscle fatigue and stress
- Wider leg cross sections provide a more secure and stable contact with test parts
- 25% greater lift strength exceeds all industry requirements and delivers stronger test indications
- Stainless steel leg shields provide impact protection to help maintain original leg shape
- Every Y-1 Yoke is individually serial numbered and tested for performance compliance prior to shipping
- Rugged chemical and impact resistant outer shell provides years of protection against field use



OUTPUT	MODEL P-1500
Y-1 Yoke Part Number	623502 (115V/60Hz), 623503 (230V/50-60Hz)
Y-1 Yoke Kit Part Number	623529 (115V/60Hz), 623530 (230V/50-60Hz)
Electrical Requirements	115V/60hz/1 ph or 230/50-60Hz/1 ph
Max. Line Current Draw	3.7 Amps
Leg Capacity	Up to 11" (30 cm)
Weight	5.35 lb. (2.43 kg)
Cord Length	10 ft. (3.05 m)
Warranty	1 Year

The Magnaflux® Y-1 AC Magnetic Yoke Kit contains all of the key elements necessary to perform visible magnetic particle inspections.

- Y-1 Magnetic Yoke (115V/60hz/1ph)
- 1 lb. #1 Gray Magnetic Powder
- 1 lb. #8A Red Magnetic Powder
- Powder Spray Bulb
- Paint Marker
- SCRUBS™ Hand Cleaner
- Portable Carrying Case and Instructions



Learn More! Scan the QR Code



A Division of Illinois Tool Works Inc.

MAGNETIC PARTICLE TESTING ACCESSORIES



Pie Field Indicator
Part # 169799



Magnetic Flux Indicators
Part # 008M004



Field Indicator
10 Gs Non-Calibrated, Part # 2480



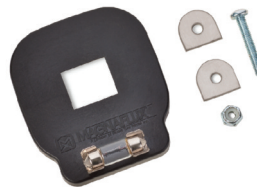
Field Indicator
10 Gs Calibrated, Part # 505056
20 Gs Calibrated, Part # 105645



Dry Powder Applicator Bulb
Part # 501232



10 lb. Test Weight
Part # 624115



Yoke Light Kit
Part # 623745



UV-A Light Meter
Part # 625024



Vibrance EV5000 UV-LED
Black Light, Part # 624673



ZB 100F Black Light Kit
Part # 600088



UV Absorbing Safety Glasses
Part # 506249



White Light Meter
Part # 622338

MAGNETIC PARTICLE TESTING MATERIALS

OIL BATH VS. WATER BATH MATERIAL CONSIDERATIONS

OIL BATH ADVANTAGES	WATER BATH ADVANTAGES
Stable concentration due to low evaporation	Low cost
Essentially no electrical conductivity	Nonflammable
No detrimental foaming	No exhaust required
Capable of some rust inhibition of parts	Odorless
Simple bath maintenance	Fast settling test
	Less effect on the skin than oil bath

Water Fluorescent: 20B, 14A Redi-Bath, and 14A Aqua-Glo

Oil Fluorescent: 14AM

Dry Visible: #1 Gray, #2 Yellow, #3A Black and #8A Red

Oil Visible: 7HF and WCP-2



MAGNAFLUX
A Division of Illinois Tool Works Inc.