

# TEST PUMPS





## Manual test pump

## Hand Test pump TP50S

Code No. **TP50S**Maximum Pressure : 50kgf/cm<sup>2</sup> (710psi)

Hydrostatic Pressure

Manual

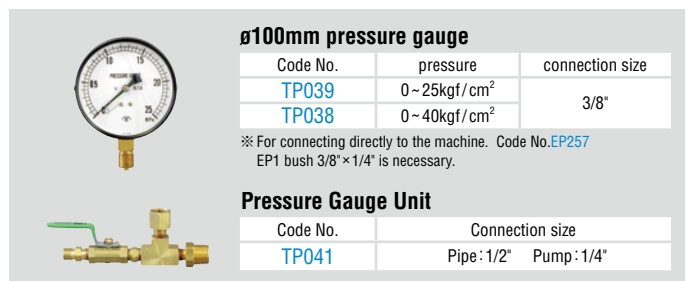
Stable tank design makes it easy to use.

Well designed handle is easy to grip and pump.

Tank &amp; cover are made from plastic to avoid corrosion.



Discharge water volume	16ml / each time
Tank capacity	3.0L
Weight	3.3kg
Length of hose	1m
Standard Accessories	Nipple R1/2" (PT1/2") × G1/4" (PF1/4")
Quantity	4



## Manual + Electric test pump

## Hybrid Test pump TP50B

Code No. **TP50B**Maximum Pressure : 50kgf/cm<sup>2</sup> (710psi)

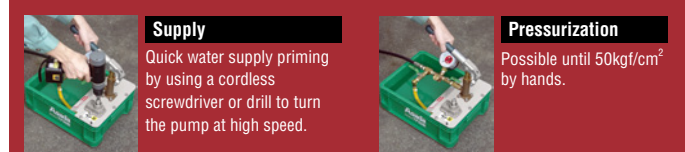
Hydrostatic Pressure

Manual + Electric Hybrid Model

Quick water supply priming by using a cordless screwdriver or drill to turn the pump at high speed.

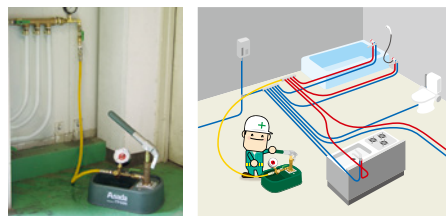
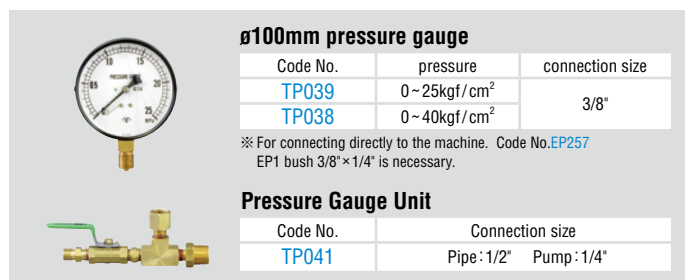
Easily viewed ø75mm pressure gauge.

Efficient working by a large sized tank (10.5L).

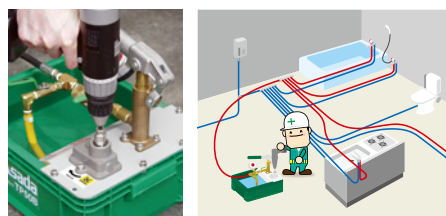
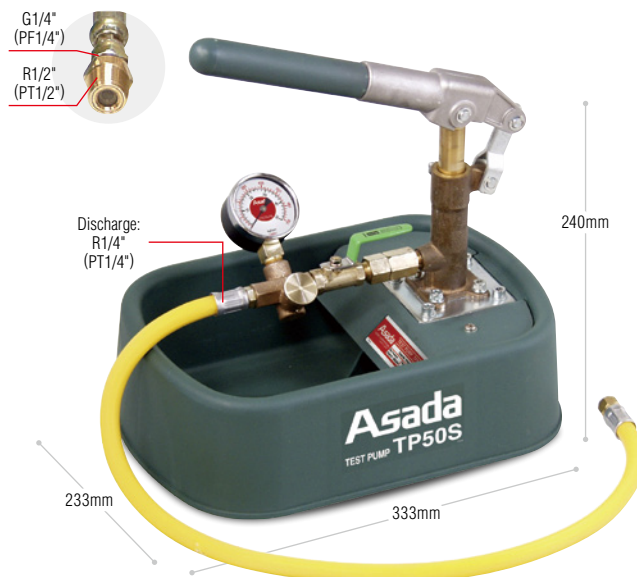
High pressure hose rated to maximum pressure of 230kgf/cm<sup>2</sup>.

Discharge water volume	By gear pump: 3.5L/min By hand: 16ml/each time
Tank capacity	10.5L
Weight	5.5kg
Length of hose	1m
Standard Accessories	Nipple with a suction filter R1/2" (PT1/2") × PF1/4", Hex bit

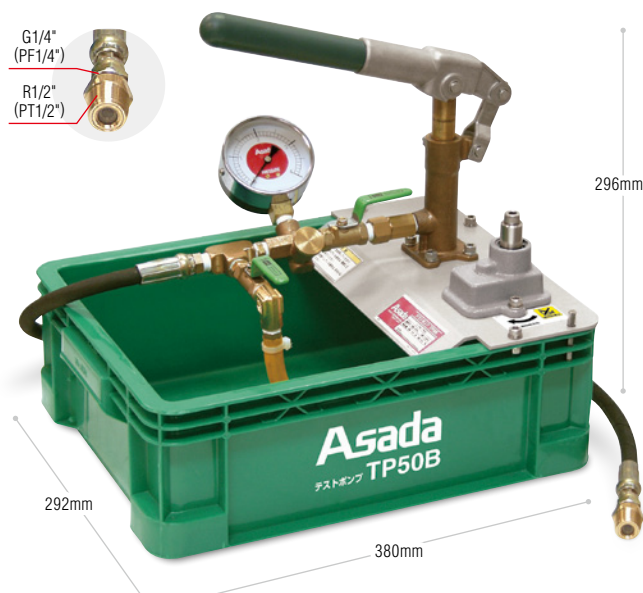
※ Capacity of gear pump is when it moves 1,100min<sup>-1</sup>.  
 ※ Gear pump works only for initial supply of water (charging).  
 ※ The maximum pressure by a screwdriver is 2Kgf/cm<sup>2</sup>.



**FOR LEAK TEST OF VARIOUS PIPES, TANKS, VALVES, AND JOINTS BY PRESSURE!  
SMALL AND EASY TO CARRY!!**



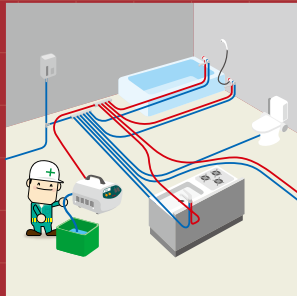
**High speed water supply using cordless screwdriver or drill to charge lines!  
BIG VOLUME 10.5L TANK!**



# EASY TO FIND LEAKS WITH PULSATION TEST PUMP!!

## Pulsation test pump MP30

Leak test of resin pipes for cold or hot water, or mechanical joints after pipe plumbing.



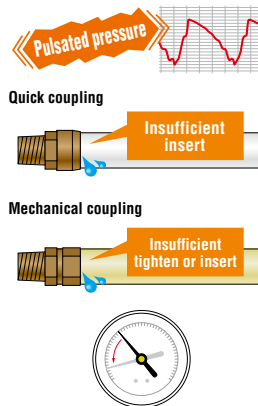
- For detecting a loose connection of mechanical joints and insufficient tightening of polybutene pipe
- Find missing or insufficient epoxy application at the joint of vinyl chloride pipes.

### Q. What is a pulsation test ?

#### A.

Making the pressure go up & down produces water vibrations. If there is improper work such as poor couplings or screwing of pipes, the vibrations increase the fault resulting in visible leaks.

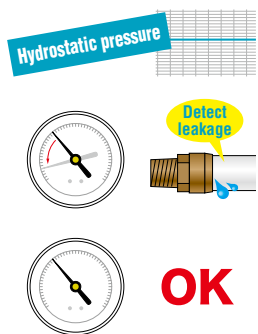
If pressure goes down at this stage, the installation is already leaking.



If the pressure isn't going down, move on to the hydrostatic pressure test. For a predetermined period of time, apply a constant pressure.

If the pressure goes down, there are leaks.

If the pressure doesn't go down, pipes are correctly installed.



By applying a pulse pressure test, leaks from improper work can be detected faster and easier than by just a normal hydrostatic test.

#### Can find small water leaks quickly

Find leaks that are hard to find by hydrostatic pressure tests alone.

Can be connected to water outlet or to the self supply water tank.

Both pulsation and hydrostatic pressure tests can be performed.

### Pulsation test pump

## Pulsation test pump MP30

Code No. **MP300**

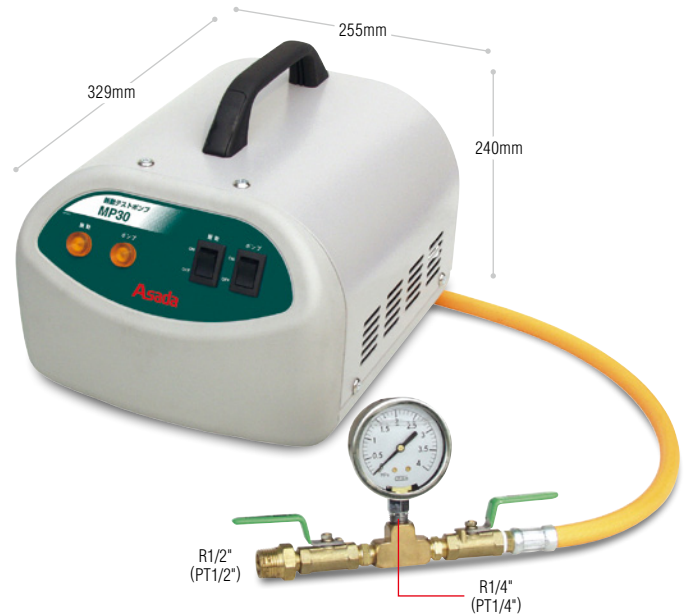
Maximum Pressure :  
25.5kgf/cm<sup>2</sup> (360psi)

Pulsative  
hydrostatic

Self-  
Priming

Over-load  
protection

Optional Item  
Direct connect  
hose to water tap



Maximum pressure	Pulsative and hydraulic pressure : ※ 20.4kgf/cm <sup>2</sup> (290psi)
Discharge water volume	3.0L / min (50Hz) • 3.7L / min (60Hz)
Number of pulsation	24 times/min
Motor	100V • 200W
Weight	12.7kg
Standard accessory	Pressure gauge unit, High pressure hose 1m, Suction hose 2.6m, Filter, Relief hose 2.6m, Case

※ In case of pulsation pressure test, set up more than 10.2kgf/cm<sup>2</sup> as maximum pressure and check more than 6kgf/cm<sup>2</sup> of a difference between maximum pressure and minimum pressure.

### Pipe sizes and lengths available for a pulsation

kinds of pipes	nominal diameter	maximum length
Polybutene pipes	1/2"	32m
	1/2"	14m
Crosslinked Polyethylene (Two layered) pipes	3/4"	85m
	1/2"	65m
Polyvinyl Chloride pipes	3/4"	81m
	1"	55m
Steel, Copper, and Stainless Steel pipes	3/8" ~ 4"	no effect



#### EP1 Pressure Gauge

Code No. **EP163**

#### Water tap direct connection hose

Code No. **EP252**

## Electronic Test Pump

## Electronic Test Pump EP440

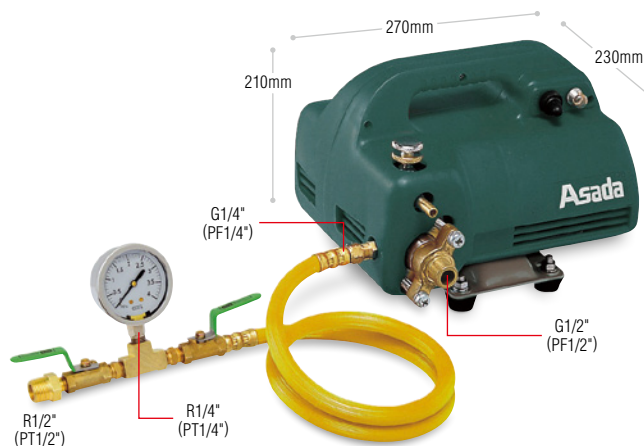
Code No. **EP470**Maximum Pressure :  
40kgf/cm<sup>2</sup> (570psi)Hydrostatic  
PressureSelf-  
PrimingOver - load  
protectionOptional Item  
Direct connect  
hose to water tap

Small and light -9kg.

Pump water also from water tap using an optional hose.

Maximum pressure	3.92MPa (40kgf/cm <sup>2</sup> )
Discharge water volume	3.0L / min (50Hz) • 3.7L / min (60Hz)
Motor	220V • 200W ※ voltage made to order
Weight	9kg
Standard Accessories	Pressure gauge unit, High pressure hose 1m, Suction hose 2.6m, Filter, Relief hose 2.6m, 2 wrenches, Case

**IDEAL MODEL FOR LEAK TEST OF VARIOUS PIPES,  
TANKS, VALVES, AND JOINTS**



## EP1 Pressure Gauge

Code No. **EP163**

Item	Code No.	Note
Test pump kit (※1)	<b>EP101</b>	pressure unit + High pressure hose 1m
Pressure gauge unit	<b>EP105</b>	_____
Spray gun kit (※2)	<b>EP201</b>	spray gun + high pressure hose 8m
Spray gun	<b>EP430</b>	_____
Hose for direct connect	<b>EP252</b>	length : 3m

※1: Kit which converts the high pressure cleaner 440 to electric test pump.  
 ※3: Use as a combination of the pressure gauge and the gauge unit.

Item	Code No.	Note
High pressure hose 1m	<b>EP160</b>	_____
High pressure hose 8m	<b>EP450</b>	can be extended
ø100mm pressure gauge with glycerin (※3)	2.5MPa <b>EP383</b> 4MPa <b>EP384</b>	connection size : 3/8"
Gauge unit (※3)	<b>TP041</b>	connection size pipe : 1/2" pump : 1/4"

## Air Test Pump

## Air test compressor 0504T

Code No. **FA0504T**Maximum Pressure :  
8 kgf/cm<sup>2</sup> (113.8psi)

High durability, low maintenance, oil -less air test compressor.

Well - balanced low center of gravity design.

Easy to adjust pressure.

Includes safety stop switch activating at 8kgf/cm<sup>2</sup>, restarting at 6kgf/cm<sup>2</sup>.

Discharge air volume (Pressure: 50Hz / 60Hz)	0kgf/cm <sup>2</sup> : 108 / 131L / min, 3kgf/cm <sup>2</sup> : 64 / 75L / min, 6kgf/cm <sup>2</sup> : 47 / 59L / min
Power Source	Single Phase 100V 50/60Hz
Tank capacity	4.0L
Weight	15kg
Standard accessories	Air hose 5m, Air duster, Pump, Pressure gauge unit, Rotest.

**Air - tight pressure test without water !  
4.0L of tank capacity !!**

Pressure gauge 10.2kgf/cm<sup>2</sup>

Code No.	Pressure
<b>FA032</b>	10.2kgf/cm <sup>2</sup>

Pressure gauge unit 10.2kgf/cm<sup>2</sup>

Code No.	Pressure
<b>FA035</b>	10.2kgf/cm <sup>2</sup>

