

Torque measuring instrument Comprehensive catalog üYE08Z2

The high performance and high quality goods trusted by the customer are offered.

CEDAR®

A Japan cedar tree (**CEDAR**) grows up straightly, and it becomes thickly and large, and branches and leaves overlap several times over, and feel forcibleness. The figure symbolizes the development nature to the future of our company, and the infinite possibility. And as for three lines in a logo mark, our company always raises

"Technology, quality, and reliance", and it means that "a customer, a cooperation company, and our company" both grow.

A certification on calibration and a result of calibration



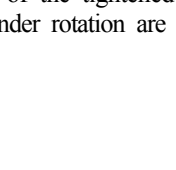
A certification on calibration and a result of calibration are appended to all the products I am allowed to supply. Simultaneously with purchase, you can use it as a part of a customer's quality system.

Calibration trust service

In order to maintain the accuracy of a torque measuring instrument, a periodical calibration inspection is required. Since our company is the special maker who performs a design and manufacture of a torque measuring instrument to after-sale service, calibration accuracy can maintain consistently.

Selection guide

CEDAR measuring instrument, there are a method of managing a screw bundle tool, and the method of the tool itself binding tight and binding torque tight to the torque value noticed and set up.

Management of a tool	The kind of tool	Measurement rang
DI-9M-8/08 CD-100M/10M DI-11 	Electric drivers (for high torque) Electric drivers 	2.0 Nm ~ 20 Nm 0.20 ~ 200 kgf cm 0.20 ~ 174 lbf in (Changes with models)
DI-1M-IP series DI-4B-25 	OIL-PULS Tools AIR Tools 	0.30 ~ 500 Nm 3.0 ~ 5000 kgf cm 3.0 ~ 4500 lbf in (Changes with models)
DI (Separate typ) series		
DIS-IP05/IP5/IP50/IP200/IP500 	Torque driver wrench 	0.020 ~ 500 Nm 0.20 ~ 5000 kgf cm 0.20 ~ 4500 lbf in (Changes with models)
DIS-IPS5C/IPS20C 	Automatic and a half automatic machine 	0.020 ~ 20 Nm 0.20 ~ 200 kgf cm 0.20 ~ 180 lbf in (Changes with models)
DIS-RL005/05/2/6 	Bolting management (Bolting of a screw and a bolt) 	0.2 Nm ~ 10 Nm 0.002 ~ 100 kgf cm 0.002 ~ 90 lbf in (Changes with models)
Display part one apparatus		
DID-4 DIW-15/20/75/120 	Bolting management (Bolting of a screw and a bolt) 	0.020 ~ 120 Nm 0.20 ~ 1200 kgf cm 0.20 ~ 1080 lbf in (Changes with models)
Measurement and inspection of other special torque		
Slip Torque tester DI-12 Rotate Torque tester NTS-6 	The torque check of the tightened screw The load torque under rotation are measured 	2.0 Nm ~ 15 Nm 0.020 ~ 150 kgf cm 0.020 ~ 134 lbf in (Changes with models)
Screw counter		
ECT-02/03/04/05 	It checks whether a worker forget to tighten a screw the tightening of skewed screws, the galling of screws, the idling of screws and stripping of screws can also be detected.	

SCHMIDT

control instruments

Hans Schmidt & Co GmbH

P. O. B. 1154
84464 Waldkraiburg Germany

Phone: int. + 49 / (0)8638 / 9410-0
Fax: int. + 49 / (0)8638 / 4825

e-mail: info@hans-schmidt.com
Internet: http://www.hans-schmidt.com

Management of electric screw driver

Torque Tester DI-9M-08/8

Electric driver

Torque driver

New A new function is added.

LCD display 4 figures

Torque setting function

Data memory built-in

USB output

Auto-power-off

Display zero clearance

Battery drive

Joint for measurement (ow)

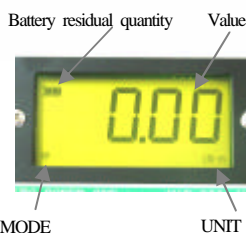
A wide measurement range and OW joint (PAT) can perform daily check of electric screw driver easily.



USB data output terminal



LED for a charge check



OW joint



Cube



Form	DI-9M-08	DI-9M-8
Measurement range	2.0 ~ 800 Nm 0.020 ~ 8 kgf cm 0.020 ~ 7 lbf in	0.020 ~ 8 Nm 0.20 ~ 80 kgf cm 0.20 ~ 70 lbf in
Accuracy	±0.5% (499 digit or less ±3digit)	
Outside size	160(W)×125(D)×55(H)	
Accessories	Measurement joint OW025 / OW10 Case / AC adaptor	Measurement joint OW20 / OW60 Case / AC adaptor

New function

(1) Display Board Became Legible.

(Measurement mode and a measurement unit. Other coded data is displayed.)

(2) Fault charge protection loading. It is pilot-lamp lighting during charge.

? Yes-no decision ? Average calculation ? Data storage is 800 affairs.

? A convenient functional setup of a setup of a measurement start value etc.

? Data output at real time (every about 1/180 seconds). ? USB terminal data output

Electric driver OW joint (PAT) is measurement-ended by one-touch.

Attaching a bit to a screw driver, work is bound tight, it is only a direction and measurement ends it. The conventional inversion operation is not required. By the method until now, friction of a screw had affected the measurement result. Since this joint is the structure where it is not influenced of fricative, it can manage torque stabilized for a long period of time.

Measurement joint specification

	OW-025	OW-10	OW-20	OW-60
Measurement range	MAX 0.25 Nm	MAX 1 Nm	MAX 2 Nm	MAX 6 Nm
Bit size	plus screw M2.6	plus screw M3	plus screw M4	plus screw M6

Torque driver In measurement of a torque driver torque wrench

Use a cube (with a 5th surface screw hole).

Management of electric screw driver (high torque)

Torque Tester DI-11

Electric driver(High torque)

Torque driver wrench

New A new function is added.

LCD display 4 figures

Torque setting function

Data memory built-in

USB output

Auto-power-off

Display zero clearance

Battery drive

Joint for measurement

To everyday management of the electric driver of high set torque etc.



Measurement joint
SJ-50 SJ-100



New function

(1) Display Board Became Legible.

(Measurement mode and a measurement unit. Other coded data is displayed.)

(2) Fault charge protection loading. It is pilot-lamp lighting during charge.

? Yes-no decision ? Average calculation ? Data storage is 800 affairs.

? A convenient functional setup of a setup of a measurement start value etc.

? Data output at real time (every about 1/180 seconds). ? USB terminal data output

Form	DI-11
Measurement range	0.10 ~ 20 Nm 1.0 ~ 200 kgf cm 1.0 ~ 180 lbf in
Accuracy	±0.5% (499 digit or less ±3digit)
Outside size	150(W)×220(D)×74(H)
Accessories	Measurement joint SJ-50 SJ-100 Case / AC adaptor

Torque Tester CD-100/10

Electric driver

Torque driver wrench

New A new function is added.

LCD display 3.5 figures

Torque setting function

Data memory built-in

USB output

Auto-power-off

Display zero clearance

Battery drive

Joint for measurement (SJ)

Unreasonableness is effective! To the high torque which starts suddenly 3 times as many improvement in durability as this SJ joint (PAT) can perform everyday check of the electric driver of the conventional system.



Form	CD-10M	CD-100M
Measurement range	0.010 ~ 1 Nm 0.10 ~ 10 kgf cm 0.10 ~ 9 lbf in	0.10 ~ 10 Nm 1.0 ~ 100 kgf cm 1.0 ~ 90 lbf in
Accuracy	±0.5% (199 digit or less ±1digit)	
Outside size	155(W)×125(D)×55(H)	
Accessories	Screw joint SJ10 (Four bits) Case / AC adaptor	Screw joint SJ50 / SJ10K (Four bits) Case / AC adaptor

New function

(1) Display Board Became Legible.

(Measurement mode and a measurement unit. Other coded data is displayed.)

(2) Fault charge protection loading. It is pilot-lamp lighting during charge.

? Yes-no decision ? Average calculation ? Data storage is 800 affairs.

? A convenient functional setup of a setup of a measurement start value etc.

? Data output at real time (every about 1/180 seconds). ? USB terminal data output

About an adapter (measurement joint SJ)

There is no decomposition of the joint depended for rewinding too much.

Since the adapter attached is the coil spring compression system of the conventional system, you can use it by the conventional management method. Moreover, the worries about disassembly of the adapter twisted for returning this adapter too much with special structure etc. are absolutely none. You can use it in comfort. (PAT)

A bit (it attaches to a tester) can also be used.

According to the model of driver, wearing of various bits is possible.

(1) If it equips with screw thread parts, it can measure, with the bit of use attached.

In breakage of a screw thread head etc., screw thread parts are only exchanged.

(2) Since Bit Plug Mouth Can be Detached and Attached, according to Model of Driver, Bit is Exchangeable.

Management of torques, such as an air driver

Torque Tester DI-4B-25

OIL-PULS Tools

AIR Tools

Torque driver wrench

LED display 4 figures

Auto-power-off

Display zero clearance

Battery drive

Blow counter

RS232C output

Joint for measurement

The best for everyday check of an air tool.

It is convenient for torque measurement of air driver of a torque control



Form	DI-4B-25
Measurement range	0.30 ~ 25 Nm 3.0 ~ 250 kgf cm 3.0 ~ 220 lbf in
Operating range of PD Mode	0.70Nm ~ , 7.0kgf cm/ lbf in ~
Accuracy	±0.5% (499 digit or less ±3digit)
Outside size	150(W)×220(D)×74(H)
Accessories	Hard joint (M10) / Soft joint (M10) Case / AC adaptor
Please choose AC adaptor out of 120V, and 230V. * (PD) is a first peak hold mode.	

	Soft joint 17mm of hexagon-head-bolt opposite neighborhoods Rotate about three times by the time a nut or a bolt arrives at a bearing surface and reaches all torque For elastic body.		Hard joint 17mm of hexagon-head-bolt opposite neighborhoods Rotate about 1/10 by the time a nut or a bolt arrives at a bearing surface and reaches all torque. For rigid object.

Measurement of an impact tool is with 60% or less of torque of a measurement maximum.

Torque Tester DI-1M-IP50/200/500 OIL-PULS Tools AIR Tools Torque driver wrench

LED display 4 figures RS232C output Auto-power-off Display zero clearance Battery drive Blow counter

At a blow counter, torque measured value is displayed as the number of blows within fixed time. Since it is light weight and small, it installs in a work line and an effect is demonstrated to the scheduled inspection of a tool.



Form	DI-1M-IP50	DI-1M-IP200	DI-1M-IP500
Measurement range	0.30 ~ 50 N m 3.0 ~ 500 kgf cm 3.0 ~ 430 lbf in	3.0 ~ 200 Nm 30 ~ 2000 kgf cm 30 ~ 1800 lbf in	3.0 ~ 500 N m 30 ~ 5000 kgf cm 30 ~ 4500 lbf in
Operating range of PD Mode	0.70Nm ~ , 7.0kgf cm/ lbf in ~	7.0Nm ~ , 70kgf cm/ lbf in ~	7.0Nm ~ , 70kgf cm/ lbf in ~
Accuracy	±0.5% (499 digit or less ±3digit)		
Outside size	Indicator : 150(W)×115(D)×48(H)		
	Detector : Refer to the above.		
Accessories	Case	AC adaptor	
Please choose AC adaptor out of 120V, and 230V. (PD) is a first peak hold mode.			

*Measurement of an impact tool is with 60% or less of torque of a measurement maximum.

Management of torque driver / torque wrench

Torque Tester DIS-IP5/IP50/IP200/IP500 Torque driver wrench

LCD display 4 figures Torque setting function Data memory built-in USB output Auto-power-off

Display zero clearance Battery drive

The best for everyday check of the bolting tool of a screw / bolt

You can use a torque wrench (preset type), torque driver, etc. as an internal standard machine of a torque tool.

New function

(1) Display Board Became Legible. (Measurement mode and a measurement unit. Other coded data is displayed.)

(2) Fault charge protection loading. It is pilot-lamp lighting during charge.

? Yes-no decision ? Average calculation ? Data storage is 800 affairs.

? A convenient functional setup of a setup of a measurement start value etc.

? Data output at real time (every about 1/180 seconds). ? USB terminal data output

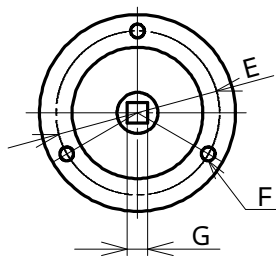
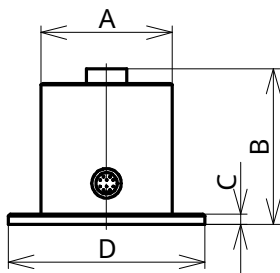


Form	DIS-IP5	DIS-IP50	DIS-IP200	DIS-IP500
Measurement range	0.020 ~ 5 N m	0.20 ~ 50 N m	2.0 ~ 200 N m	2.0 ~ 500 N m
	0.20 ~ 50 kgf cm	2.0 ~ 500 kgf cm	20 ~ 2000 kgf cm	20 ~ 5000 kgf cm
	0.20 ~ 45 lbf in	2.0 ~ 450 lbf in	20 ~ 1800 lbf in	20 ~ 4500 lbf in
Accuracy	±0.5% (499 digit or less ±3digit)			
Outside size	Indicator : 100(W)×105(D)×33(H) (A projection part does not contain.)			
	Detector : Refer to the Lower part.			
Accessories	Case			
	AC adaptor (Please choose AC adaptor out of 120V, and 230V.)			

* There is also DIS-IP05 (operating range is 2.0mNm-500.0mNm).

Detection machine IP series Outside (DI-1M-IP / DIS-IP common)

Outside figure



	IP5(IP05)	IP50	IP200	IP500
A	40	50	60	80
B	41.2	63	73	99
C	5	10	10	15.5
D	60	90	110	140
E	50	74	90	116
F	3 division 4.5	3 division 6.3	3 division 8.3	3 division 10.5
G	6.35sq	9.5sq	12.7sq	19sq
Weight	200g	600g	1kg	2.5kg

Bolting machines, such as automatic and a half automatic machine

Torque Tester DIS-IPS5/IPS20 Bolting machines

LCD 4 figures Torque setting function Data memory USB output Auto-power-off Battery drive

Since the detector is small, it is incorporable into an automatic machine.

New function

(1) Display Board Became Legible. (Measurement mode and a measurement unit. Other coded data is displayed.)

(2) Fault charge protection loading. It is pilot-lamp lighting during charge.

? Yes-no decision ? Average calculation ? Data memory 800 data ? A convenient functional setup of a setup of a measurement start value etc.

? Data output at real time (every about 1/180 seconds). ? USB terminal data output



Rewinding becomes unnecessary at OW joint.

Form	DIS-IPS5C	DIS-IPS20C
Measurement range	0.020 ~ 5 Nm 0.20 ~ 50 kgf cm 0.20 ~ 45 lbf in	0.20 ~ 20 Nm 2.0 ~ 200 kgf cm 2.0 ~ 180 lbf in
Accuracy	±0.5% (499 digit or less ±3digit)	
Outside size	Indicator :100(W)×105(D)×33(H) (A projection part does not contain.)	
Accessories	Attachment ?20 mm M4/M5M6/M8 Measurement joint	

As for "DIS-IPS5/IPS20" of a right round shape, the amount of detecting-element stationary portion is.

Bolting management of a screw and bolt

The last bolting torque of a screw is managed. It is compactly about a detection part by the separate type.

Digital Torque driver DIS-RL2/RL6 Bolting of a screw and a bolt

New A new function is added.

Torque setting function Data memory USB output Auto-power-off Display zero clearance

Since an indicator is small, it is the best for work in the spot. It corresponds to measurement of M1-M4 screw.

New function

(1) Display Board Became Legible. (Measurement mode and a measurement unit. Other coded data is displayed.)

(2) Fault charge protection loading. It is pilot-lamp lighting during charge.

? Yes-no decision ? Average calculation ? Data memory 800 data ? A convenient functional setup of a setup of a measurement start value etc.

? Data output at real time (every about 1/180 seconds). ? USB terminal data output



DIS-RL2/RL6

Form	DIS-RL2	DIS-RL6
Measurement range	0.010 ~ 2 Nm 0.10 ~ 20 kgf cm 0.10 ~ 18 lbf in	0.10 ~ 6 Nm 1.0 ~ 60 kgf cm 1.0 ~ 54 lbf in
Accuracy	±0.5% (199digit or less ±1digit)	
Outside size	Indicator :100(W)×105(D)×33(H) (A projection part does not contain.) detector f30 (grip)×145(L)	
Accessories	6.35HEX Bit + #1, #2 Case/AC adaptor	

The check of the torque of a small screw

The best for the torque check of the small screw of M0.8 - M2.0.

Digital torque driver DIS-RL005/RL05 Bolting of a screw

New A new function is added.

Torque setting function Data memory built-in USB output Auto-power-off Display zero clearance Battery drive

New function (1) Display Board Became Legible. (Measurement mode and a measurement unit. Other coded data is displayed.)

(2) Fault charge protection loading. It is pilot-lamp lighting during charge.

? Yes-no decision ? Average calculation ? Data memory 800 data ? A convenient functional setup of a setup of a measurement start value etc.

? Data output at real time (every about 1/180 seconds). ? USB terminal data output

It becomes light smaller and measurement of minute torque is easy.



DIS-RL005/RL05

Form	DIS-RL005	DIS-RL05
Measurement range	0.20 ~ 50 Nm 2.0 ~ 500 g cm	2.0 ~ 500 Nm 0.020 ~ 5 kgf cm 0.020 ~ 4.5 lbf in
Accuracy	±0.5% (499 digit or less ±3digit)	
Outside size	Indicator :100(W)×105(D)×33(H) (A projection part does not contain.) detector f21 (grip)×123(L)	
Accessories	4 Bit + #00, #0	4 Bit + #0, #1
	Case/AC adaptor	

Digital torque driver DID-4 **Bolting of a screw and a bolt**

New A new function is added.

LCD display 4 figures Torque setting function Data memory built-in USB output Auto-power-off
Display zero clearance Battery drive Screw counter One-way function

New function

(1) Display Board Became Legible. (Measurement mode and a measurement unit. Other coded data is displayed.)

(2) Fault charge protection loading. It is pilot-lamp lighting during charge.

? Yes-no decision ? Average calculation ? Data memory 800 data ? A convenient functional setup of a setup of a measurement start value etc.
? Data output at real time (every about 1/160 seconds). ? USB terminal data output

It is lightweight, and since it has the structure which is easy to use, measurement stabilized by prolonged work can be performed. Since it is one apparatus, measured value can be read clearly. It corresponds to the screw or bolt to M3-M4.



Form	DID-4
Measurement range	0.020 ~ 4 N m 0.20 ~ 40 kgf cm 0.20 ~ 35 lbf in *A measurement unit is fixed to <u>one unit</u> .
Accuracy	±0.5% (499 digit or less ±3digit)
Outside size	34 (grip)×259(L)
Accessories	6.35HEX Bit + #1, #2 AC adaptor

?Prevent a failure to bind tight by screw bundle counter

Ratchet mechanism One hand operation without changing gripping position.

(Measurement of the screw not more than M2.6 should use "DIS-RL05)

Digital torque Wrench DIW-15/20/75/120 **Bolting of a screw and a bolt**

LCD display 4 figures Torque setting function Data memory built-in USB output Auto-power-off
Display zero clearance Battery drive Screw counter One-way function

New function

(1) Display Board Became Legible. (Measurement mode and a measurement unit. Other coded data is displayed.)

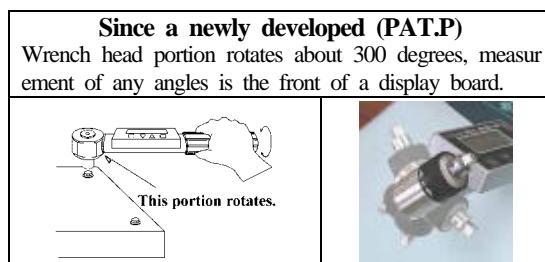
(2) Fault charge protection loading. It is pilot-lamp lighting during charge.

? Yes-no decision ? Average calculation ? Data memory 800 data ? A convenient functional setup of a setup of a measurement start value etc.
? Data output at real time (every about 1/160 seconds). ? USB terminal data output

DIW-15/20/75/120



The bolting mechanism and the meter part were united, the joint part rotated, torque value could be read by the hand at every angle, and workability improved. It corresponds to the bolt to M14.



?Prevent a failure to bind tight by screw bundle counter

Form	DIW-15	DIW-20	DIW-75	DIW-120
Measurement range	0.20 ~ 15 N m 2.0 ~ 150 kgf cm 2.0 ~ 130 lbf in	0.20 ~ 20 N m 2.0 ~ 200 kgf cm 2.0 ~ 180 lbf in	0.20 ~ 75 N m 2.0 ~ 750 kgf cm 2.0 ~ 650 lbf in	2.0 ~ 120 N m 20 ~ 1200 kgf cm 20 ~ 1080 lbf in
Accuracy	±0.5% (499 digit or less ±3digit)			
Outside size	34 (grip)×236 (L.) socket part 6.35sq	34 (grip)×235(L) socket part 9.5sq	34 (grip)×320(L) socket part 9.5sq	34 (grip)×445(L) socket part 12.7sq
Accessories	AC adaptor One-way mechanism socket / AC adaptor			

The torque check of the tightened screw

- The check of "the torque value of the screw actually tightened" by the product random inspection
- The output torque of power driver is set up and managed by asking for the relation between "Value of torque tester" and "torque value of the screw actually tightened".

Slip Torque Tester DI-12 series

Bolting torque of a screw and a bolt

Inspection of a screw and a bolt

LCD display 4 figures USB output Auto-power-off AC power-supply

The torque value of the firm screw is measured.

The place which performs a bundle examination and slides it from a firm point is caught, and torque value is judged. Smooth bundle work is performed by motor drive.

Since a motor is stopped after judging, neither superfluous torque nor looser torque inspection has necessity

DI-12-SL4



DI-12-SL02



DI-12-SL15



Form		DI-12-SL4	DI-12-SL02	DI-12-SL15
Measurement range		0.030 ~ 4.000 Nm	1.5 ~ 200.0 Nm	0.30 ~ 15.0000 Nm
		kgf-cm and lbf-in can also be responded		
Accuracy		±1% (500 or less digit±5digit)	±0.5% (200 or less digit±1digit)	
Detection judging		If a slip torque value is detected, you will be told about by green lamp lighting.		
Bit plug form		HEX 6.35	4	sq 6.35
Outside dimension	Detector	60×155×80 (about 290g)	20×145 (about 80 g)	55×270 (about 1.4kg)
	Indicator	166(W)×142(D)×48(H) (about 1kg)		
Accessories		Bit + #1 #2	Bit + #0	-

The load torque under rotation are measured

Rotation starting torque and the load torque under rotation are measured.

(Thing which does not rotate itself and which does not have power)

Rotate Torque Tester NTS-6 series

Inspection of running torque

LCD display 4 figures USB output AC power-supply

New To inspection of a printer copy machine, a zoom lens doorknob mechanism, a hinge mechanism, etc.

Measurement by the high precision gear motor and the strain meter

While an output shaft carries out self-rotation, the load fluctuation of a solid of revolution is caught by the sensor.



Form		NTS-6				
		S-1	S-2	S-5	S-10	S-20
Measurement range		3.0 ~ 100 Nm	3.0 ~ 200 Nm	0.030 ~ 0.5 Nm	0.030 ~ 1 Nm	0.030 ~ 2 Nm
		kgf-cm and lbf-in can also be responded. *A measurement unit is fixed to <u>one unit</u> .				
Accuracy		±1 % (300 or less digit±3digit)				
Rotational frequency (at the time of no-load)		about 85 rpm	about 25 rpm	about 13 rpm	about 18 rpm	
Torque judging		It is in measuring range and a setup of a maximum value and a minimum value is possible. O.K. In the Set point •• OK Lamp lighting NG Outside the Set point •• NG Lamp lighting				
Bit plug form		4			HEX6.35	
Outside dimension	Indicator	166 (W)×142 (D)×48 (H)				
	Detector	28×149		37×191		40×235
Accessories		Bit				

The number of screw bolting is set and it checks whether a worker forget to tighten a screw!

The bolting end signal from electric screw driver is counted and told.

Screw Counter ECT Series Electric driver

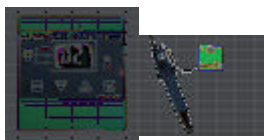
The example of a correspondence driver To the electric driver out of which the screw bundle completion signal has come

* There is also a model which cannot be adapted. Moreover, in part, also when change of a setup is required, it is. Please ask to our company for details.

Nitto Kohki: -- : by SP specification Nakamura MFG-- : by the SWP specification HIOS -- : by the OPC specification ETC

Screw Counter ECT-02 Low price and a short form

Counts **Intrusion detection of a screw** **Idling detection of a screw** **Count cancellation**



By timer loading, the tightening of skewed screws, the galling of screws, the idling of screws and stripping of screw can also be detected. Since it is lightweight and compact, the number of counts of a screw bundle can be checked in the position near a worker. After the torque rise, if reverse rotation operation is performed immediately, the function in which the number of counts returns is attached. (Only when the reverse signal is outputted from the driver)

Screw Counter ECT-03/04 For Work sensor

For Work sensor **Work O.K. output** **Counts O.K. output** **Chattering prevention of a time setting sensor**



It will become an error, if a work is removed before attaching the sensor which judges the existence of a work and becoming a bolting number. Since a signal will be outputted if bolting completion is carried out and a work is removed -- a half -- you can also use an automatic line. After the torque rise, if reverse rotation operation is performed immediately, the function in which the number of counts returns is attached (Only when the reverse signal is outputted from the driver) ECT-04 are with a part counter.

Screw Counter ECT-05 Work sensor correspondence

Work sensor correspondence **Work O.K./NG output** **Counts O.K./NG output** **Work sensor ON/OFF change**



It will become an error, if a work is removed before attaching the sensor which judges the existence of a work and becoming a bolting number. Since a signal will be outputted if bolting is completed -- a half -- you can also use an automatic line. After the torque rise, if reverse rotation operation is performed immediately, the function in which the number of counts returns is attached. (Only when the reverse signal is outputted from the driver) With a DIP switch, even if he has no work sensor, it can be used. It can use for various work managements with various outputs.

Form	ECT-02	ECT-03	ECT-04	ECT-05
setting counts	1-99 (count decrease system)			
Timer setup	LO (under time) TIME 0.0 - 2.0 seconds		HI (over time) TIME 0.0 - 9.0 seconds	
Size	80 (H)×75 (W)×13 (D)	108 (H)×77(W)×40 (D)	160 (H)×77 (W)×40 (D)	126 (H) ×112 (W)×35 (D)

Kind in Measurement Mode

The torque measurement apparatus of our company carries the following four measurement modes.

P-P (peak to peak)	The maximum under measurement is always displayed. Usually, this mode is used.
T-R (track)	It is mainly used at the time of calibration etc. The value of the load torque concerning a detector is displayed as it is.
P-D (peak-down)	A value when a load torque value changes from a rise to descent is displayed. It carries out, once it pushes a clear button, when applying re-load. It is suitable for measurement of a torque wrench etc.
C (Real-time Output)	The data output of the load torque value is carried out very about 1 / 80` 180 seconds. It is suitable for torque curve creation or a screw bundle examination.

After-sale service

When the goods I was allowed to supply break down, I fix, adjust and do in our company. About the model which became a manufacture stop, parts are held for [principle] five years. However, please understand beforehand that it is by the production stop of the parts by other makers etc. also when it cannot fix. Moreover, since the scheduled inspection of a measuring instrument and overhaul are also performed, please contact me to the store for which you asked, or direct our company in the case of hope.

* The contents of this catalog may change specification and a design without a preliminary announcement for improvement.



Hans Schmidt & Co GmbH

P. O. B. 1154
84464 Waldkraiburg Germany

Phone: int. + 49 / (0)8638 / 9410-0
Fax: int. + 49 / (0)8638 / 4825

e-mail: info@hans-schmidt.com
Internet: http://www.hans-schmidt.com