

# Steel Ball Valves

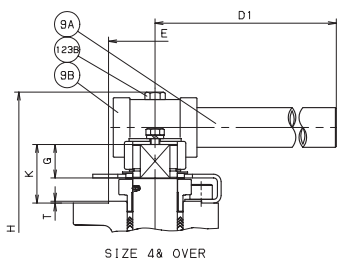
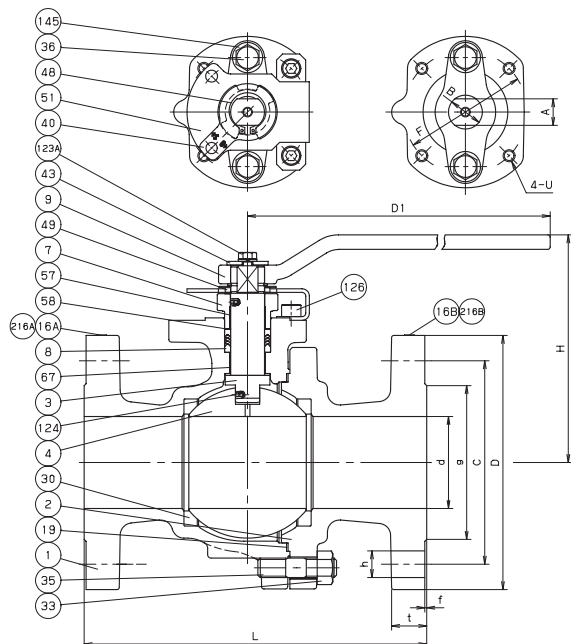


## 300UTDZM 300UTDZM-FS

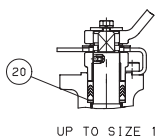


### MATERIAL LIST

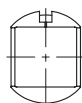
No.	Name of Parts	Materials
1	BODY	A351 Gr. CF8M
2	BODY CAP	A351 Gr. CF8M
3	STEM	A276 TYPE316
4	BALL	A276 TYPE316 or A351 Gr. CF8M
7	GLAND	A351 Gr. CF8
8	GLAND PACKIING	300UTDZM PTFE 300UTDZM-FS FLEXIBLE GRAPHITE
9	HANDLE	DUCTILE IRON(UP TO SIZE 3)
9 A	HANDLE BAR	CARBON STEEL(SIZE 4 & OVER)
9 B	HANDLE HEAD	DUCTILE IRON(SIZE 4 & OVER)
16 A	NAME PLATE	A276 TYPE304
16 B	LEV PLATE	A276 TYPE304
19	GASKET	300UTDZM PTFE 300UTDZM-FS FLEXIBLE GRAPHITE
20	PACKING WASHER	A276 TYPE316L(UP TO SIZE 1)
30	BALL SEAT	HYPATITE® PTFE
33	CAP NUT	A194 Gr. 8M
35	CAP BOLT	A193 Gr. B8M
36	GLAND BOLT	STAINLESS STEEL
40	KEYLOCK PLATE	A276 TYPE304
43	HANDLELOCK PLATE	A276 TYPE304
48	SNAP RING	A276 TYPE304
49	STOPPER	A276 TYPE304
51	STOPPER PLATE	A276 TYPE304
57	GLAND BUSHING	G/F PTFE
58	GLAND WASHER	A276 TYPE304
67	STEM BEARING	G/F PTFE
123 A	HANDLELOCK PLATE BOLT	STAINLESS STEEL
123 B	HANDLE BOLT	STAINLESS STEEL
124	SPRING & PIN	A313 & A276 TYPE316
126	STOPPER PLATE BOLT	STAINLESS STEEL
145	CONED DISC SPRINGS	Inconel® 718 or Equivalent
216 A	CE PLATE	A276 TYPE304(SIZE 1 1/2 & OVER)
216 B	ATEX PLATE	A276 TYPE304



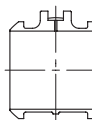
SIZE 4 & OVER



UP TO SIZE 1



SIZE 6 ONLY



SIZE 8 ONLY  
CORED CAVITY

### DIMENSIONS

Unit : inch

Nominal Size	End Flange																			Mounting Dimensions for Actuator							ISO 5211 Flange Type
	in.	mm	d	H	D1	L	Bolt Hole				Bolt Size	g	t	f	A	B	E	F	G	K	T	U					
							D	C	No.	h																	
1/2	15	0.55	4.25	5.12	5.50	3.75	2.62	4	0.62	1/2	1.38	0.56	0.06	0.36	0.47	0.99	1.42	0.35	0.87	0.04	M5	F03					
3/4	20	0.75	4.37	5.12	6.00	4.62	3.25	4	0.75	5/8	1.69	0.62	0.06	0.36	0.47	0.99	1.42	0.35	0.87	0.04	M5	F03					
1	25	0.95	4.88	7.09	6.50	4.88	3.50	4	0.75	5/8	2.00	0.69	0.06	0.55	0.71	1.38	1.97	0.55	1.18	0.06	M6	F05					
1 1/2	40	1.50	5.28	9.06	7.50	6.14	4.50	4	0.88	3/4	2.88	0.81	0.06	0.67	0.87	2.17	2.76	0.67	1.34	0.06	M8	F07					
2	50	1.97	5.63	9.06	8.50	6.50	5.00	8	0.75	5/8	3.62	0.88	0.06	0.67	0.87	2.17	2.76	0.67	1.34	0.06	M8	F07					
2 1/2	65	2.52	7.05	15.75	9.50	7.50	5.88	8	0.88	3/4	4.12	1.00	0.06	0.87	1.10	2.76	4.02	0.87	1.77	0.08	M10	F10					
3	80	3.00	7.44	15.75	11.12	8.25	6.62	8	0.88	3/4	5.00	1.12	0.06	0.87	1.10	2.76	4.02	0.87	1.77	0.08	M10	F10					
4	100	3.94	8.82	29.53	12.00	10.00	7.88	8	0.88	3/4	6.19	1.25	0.06	1.06	1.42	3.35	4.92	1.06	2.05	0.08	M12	F12					
6	150	5.95	12.40	39.37	15.88	12.50	10.62	12	0.88	3/4	8.50	1.44	0.06	1.42	1.89	3.94	5.51	1.42	2.48	0.08	M16	F14					
8	200	7.95	15.98	59.06	19.75	15.00	13.00	12	1.00	7/8	10.62	1.62	0.06	1.81	2.36	5.12	6.50	1.81	3.11	0.08	M20	F16					