



Multimag+

Multimag+ is a reliable and stable multijet type water meter. The composite parts are made of an high quality thermoplastic material, heat stabilized, with excellent characteristics of strength and durability and lighter than bronze.

FEATURES AND BENEFITS

- » Designed for long term performance
- » Extra-dry register 360° orientable for comfortable reading.
- » Accuracy and Quality with 100% of meters calibrated in electronic test benches
- » Anti-fraud ring to prevent tamper.
- » Pre-equipped for remote reading
- » Lightweight and durable plastic housing.
- » Adjusting screw internal or external
- » PN 16
- » Lead free
- » Not affected by dezincification

New Material

Multimag+ is now available in composite, a special thermoplastic with excellent technical characteristics appropriate to replace traditional bronze, without any loss in terms of metrology and pressure resistance.

The plastic housing provides the additional benefit of being extremely lightweight with positive impact under the environmental point of view. Itron has acquired since years a very good experience in using composite material for water meters. Our meters with composite material are installed in all environmental conditions all over the world, providing benefit to all our customers requiring this material.

Metrological Performance

Multimag+ is developed and produced to comply the highest international standards, such as:

- » NM 212:1999 (Mercosur)
- » Portaria Inmetro 246:00 (Brazil)
- » NOM (Mexico)
- » ISO 4064:1993 and ISO 4064:2005
- » OIML R49
- » MID 2005/22/EC
- » EN 14154

Advantages

- » Plastic Housing not interesting for theft
- » Ready for Remote reading
- » Strong anti tampering features
- » Reliability in measuring
- » Not affected by corrosion and chemicals
- » Not affected even in harsh conditions
- » Non conductive material, does not suffer the effect electrolysis galvanic corrosion

REGISTER

Made of copper and glass casing hermetically sealed and resistant to condensation and submersion. Alternatively plastic version available. Both IP68* and equipped with Cyble pointer which is compatible with all modules cyble.

* Conditions previously agreed between manufacturer and user



COMMUNICATION

Pre-equipped with the recognized target Cyble allowing the integration of remote meter reading.

ANTI-FRAUD SYSTEM

The systems consists of an anti-fraud ring which can not be disassembled without breaking it. In any attempt of opening the meter, the cover gets broken to prevent and identify frauds attempt.

MAGNETIC SHIELDING

Magnetic shield which provides extra protection against magnetic interference (magnetic fraud).

Adjustment screw internal or external

MAGNETIC TRANSMISSION

Transmission between turbine an extra-dry register is done through a magnetic coupling ensures durability. No parts of register are in contact with the water flow.

RESISTENT HOUSING

Lightweight housing, resistant to high pressure and UV rays, reducing the incidence of theft.

ROBUST AND ENVIRONMENTAL IMPACTS

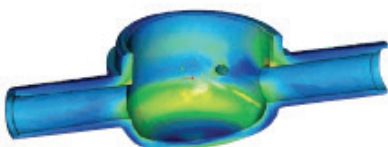
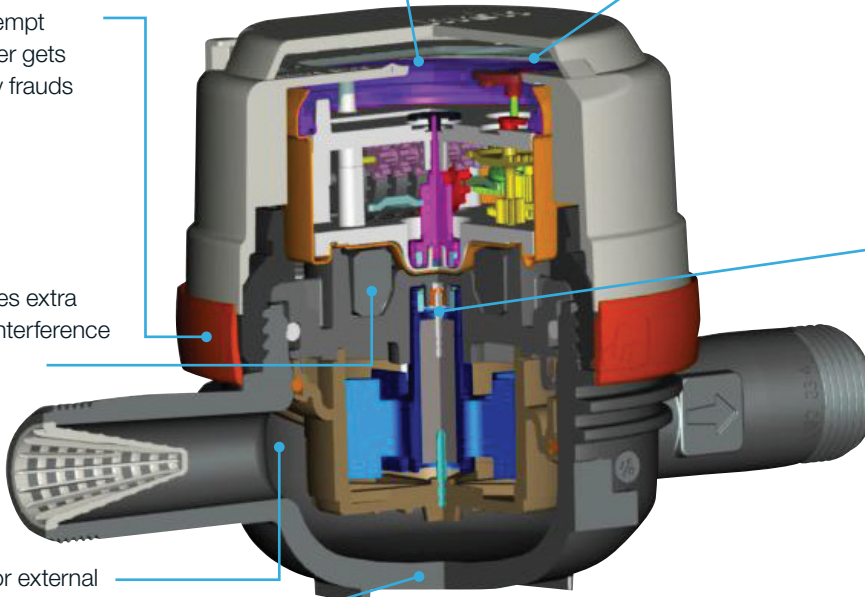
Severe internal validation test demonstrates the high performance of thermoplastic material along with our design provides a high level of confidence to resist:

- » Static pressure and dynamic
- » Aging correlated with temperature
- » Mechanical strength of body and connections (secure facility)

This results show that there is no restriction in using the composite compared with the metal version.

ENVIRONMENT

A study conducted in cooperation with CODDE (Conception Développement Durable Environnement) shows that the composite material provides advantages from the standpoint of environmental preservation. A comparison made with production and distribution of a water meter in metal shows that composite meter has less impact on the environment.



ADAPTABILITY

Multimag+ can be equipped with Cyble modules, making it an interface for remote reading.

FEATURES AND BENEFITS OF CYBLE:

- » Ease of read in the toughest environments reducing the number of estimated bills.
- » Leak detection
- » Back flow detection
- » Tamper detection
- » Consumer profile study of the meter
- » Protection against magnetic fraud

CYBLE RF

(Cyble AnyQuest)
(Cyble EverBlu)



CYBLE PULSE (Cyble Sensor)



CYBLE M-BUS

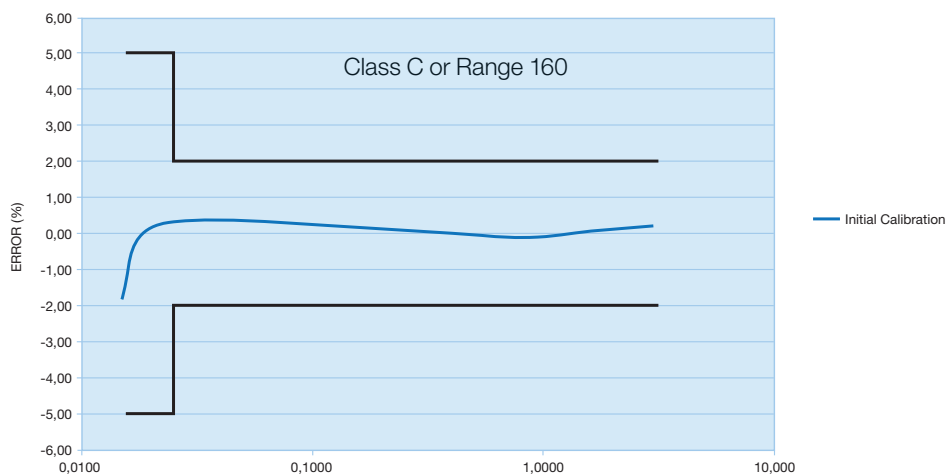


Anti-fraud Ring

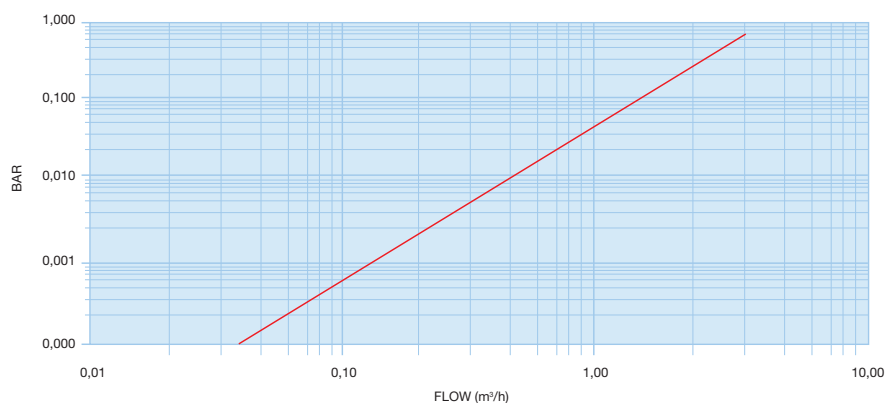


Multimag+ meter pre-equipped

TYPICAL CURVE MULTIMAG+



HEAD LOSS TYPICAL



Multimag+ equipped with Cyble Device

Metrological Characteristics

Metrology ISO4064:2005		Q3/Q1 (Range)	80	80	100	125	160
Typical Start-up		l/h	8,5		7,5		
Minimum Flow Rate	Q1	l/h	20	31,25	25	20	15,6
Transitional Flow Rate	Q2	l/h	32	50	40	32	25
Nominal Flow Rate	Q3	m³/h	1,6		2,5		
Overload Flow	Q4	m³/h	2,0		3,125		

* Considering horizontal installation

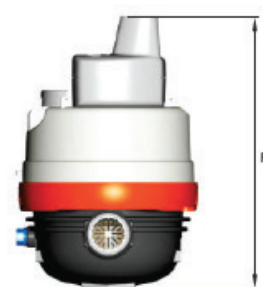
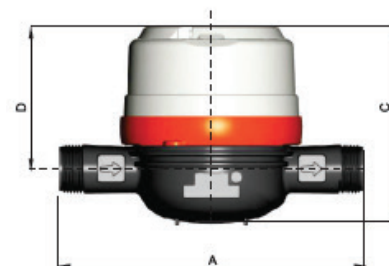
Metrology ISO4064:1993		Class	B	C
Typical Start-up		l/h	8,5	7,5
Minimum Flow Rate	Qmin	l/h	30	15
Transitional Flow Rate	Qt	l/h	120	22,5
Nominal Flow Rate	Qn	m³/h	1,5	
Overload Flow	Qmax	m³/h	3	

* Considering horizontal installation

Technical Characteristics			
Maximum Temperature		°C	40
Minimum Temperature (<1h)		°C	50
Maximum Operating Pressure		bar	10
Head Loss at Qmax		bar	< 1
Maximum Reading		m³/h	9999 or 99999
Minimum Reading		l	0,02
Liters/Pulse	Cyble Pointer	l	10
	Central Star	l	0,00763

Dimensions

Nominal Diameter (DN)	mm inches	15 1/2"	20 3/4"
Weight	Kg	0,55	0,57
Thread	mm	G 3/4"	G 1"
A	mm	165 / 170 / 190	
B	mm	98	
C	mm	110	
D	mm	80	
E	mm	178	
F	mm	150	



Join us in creating a more **resourceful world**.
To learn more visit **itron.com**

While Itron strives to make the content of its marketing materials as timely and accurate as possible, Itron makes no claims, promises, or guarantees about the accuracy, completeness, or adequacy of, and expressly disclaims liability for errors and omissions in, such materials. No warranty of any kind, implied, expressed, or statutory, including but not limited to the warranties of non-infringement of third party rights, title, merchantability, and fitness for a particular purpose, is given with respect to the content of these marketing materials. © Copyright 2015, Itron. All rights reserved. WA-0088.1-EN-06.15

ITRON BRASIL

Av. Joaquim Boer, 792
Americana/SP
CEP: 13477-360

Phone: +55 (19) 3471.8400
Fax: +55 (19) 3471.8410