

Flodis

Single jet turbine type water meter

Flodis is single jet turbine type meter, designed to measure cold drinking water, offering the capability to measure accurately a wide range of flow rates.

The Technology

Flodis has one of the simplest but highly engineered design, that enables to measure accurately over time from very low flow rates up to peak flows, even in severe environmental conditions when in service.

Reliability-Durability

- > Proven stable accuracy in tough installation conditions and high turbidity water. Flodis has been in service for our main customers for over 10 years now.
- > Millions of Flodis are currently in service around the world in many different climate conditions, always offering one of the best return of investment over time.
- > The high quality of pivoting and levitation of the balanced turbine ensures exceptional endurance
- > The turbine is the only dynamic part in contact with water, offering the well-known durability of the product.
- > No need for adjustment due to its design and high technology implemented in manufacturing

Easy Reading

Flodis register combines the following advantages:

- > Rotation close to 360° on site
- > Large numbered rollers with good contrast for excellent reading capability
- > Wiper ensures readability of the extra-dry register in tough humid conditions
- > The Copper Can register version assure water tightness in permanent immersion conditions

Communication Device

- > Pre-equipped for communication through Cyble.

Approvals and Standards

Flodis is certified from Q3 1,6 to 10 m³/h from Ratio 63 to 200 according with:

- > MID, Directive 2004/22/EC of the European Parliament
- > European Standard EN14154 - 2005
- > International Standard ISO 4064 - 2005
- > Recommendation OIML R49 - 2004

Flodis is also approved class C from 1.5 to 6 m³/h according with :

- > European Directive EEC 75/33 for cold potable water meters (expiring date October 2016).

Flodis is compliant with regulations for products to use in contact with water intended for human consumption.



- > *Single jet for severe installation conditions*
- > *Wide measuring range*
- > *Patented measuring chamber*
- > *Pre-equipped for communication*

> *Copper Can register for permanent immersion*



Working Principle

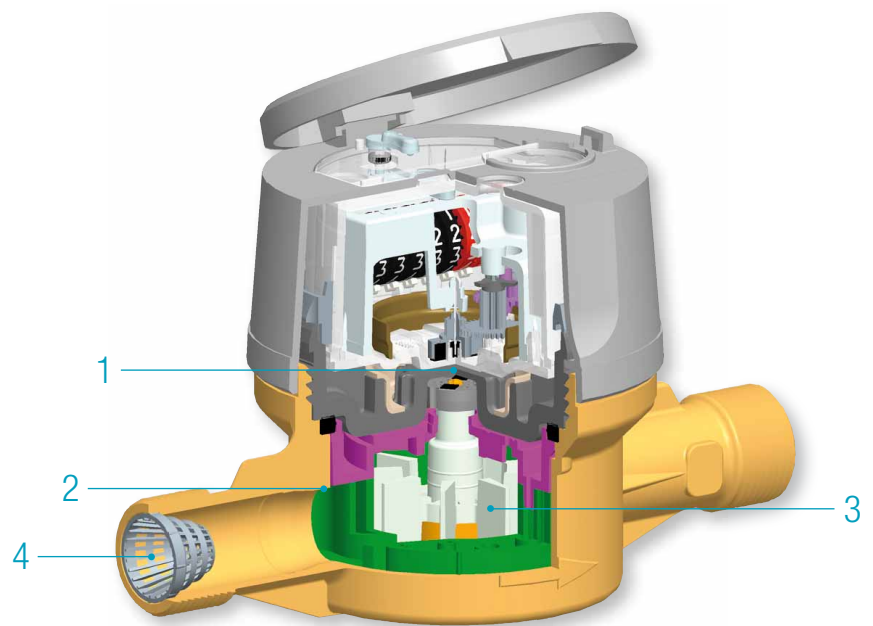
Flodis has two main components; the hydraulic that allows measurement of the water flow and the register that displays the measured water volume. Transmission interface between those components is achieved by a magnetic coupling **1**. Flodis is a single jet velocity meter. Flow coming from the inlet, diverted by a specially shaped injector **2** drives the turbine **3**. This technology is suitable for all types of distribution water quality.

Equipped with an upstream filter **4**, Flodis is protected against impurities accidentally conveyed by water.

The magnetic coupling transmission, standard on the Flodis line, is accompanied by an extra-dry register.

Both gears and register are in a waterproof and air proof enclosure.

The turbine is the only moving part of the meter in motion in water.



Communication

Flodis is supplied pre-equipped with Cyble Target. Allows communication and remote reading through:

- > Pulse output (Cyble Sensor)
- > M-Bus protocol (Cyble M-Bus)
- > Radio frequency wireless link for mobile and fixed network (AnyQuest and EverBlu)

Key Advantages of Cyble Technology

- > No need for additional investment on the meter to implement remote reading
- > Itron standardized meter interface, irrespective of meter technology and widely spread on Itron water meters range
- > Leakage detection
- > Reverse flow management
- > Consumption profile analysis
- > Immune to magnetic tampering
- > Principle proven on the field with a 20 years experience

> *Cyble module fitted on Flodis meter*



Technical characteristics

Nominal diameter (DN)	mm	15	20	25	32	
	inches	1/2"	3/4"	1"	1" 1/4"	
In compliance with MID - (MI-001)						
MID type Approval Number		LNE 19125	na	LNE 14887		
Nominal Flow Rate (Q3)	m³/h	1,6	2,5	4	6,3	10
Standard Ratio Horizontal (*) (Q3/Q1)		100	160	160	160	160
Minimum Flow Rate (Q1)	l/h	16	15,6	25	39,4	62,5
Transitional Flow Rate (Q2)	l/h	25,6	25	40	63	100
Overload Flow Rate (Q4)	m³/h	2	3,1	5	7,9	13
Pressure Loss Class at Q3	bar	0,25	0,63	0,63	0,63	0,63
Maximum Admissible Pressure (MAP)	bar	16				
Operating Temperature (T)	°C	0,1 / 50				
Climatic Environment	°C	5 / 55				

(*) Other Ratios available under specific request

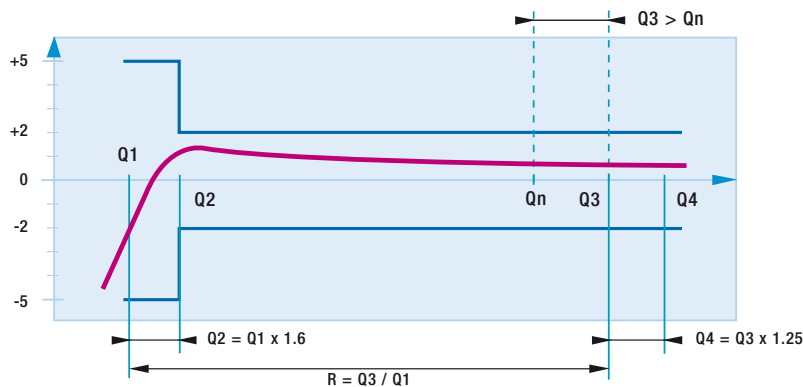
In compliance with EEC 75/33

EEC metrology class	C horizontal - B all other positions					
EEC approval	F-06-G-1277					
Nominal flow rate	Qn	m³/h	1,5	2,5	3,5	6
Maximum flow rate	Qmax	m³/h	3	5	7	12
Minimum flow rate	Qmin	l/h	15	25	35	60
Transitional flow rate	Qt	l/h	22,5	37,5	52,5	90
Pressure loss group at	Qmax	bar	<1 (=0,8)			
Maximum admissible pressure	bar	16				
Maximum admissible temperature	°C	30				

Other Characteristics

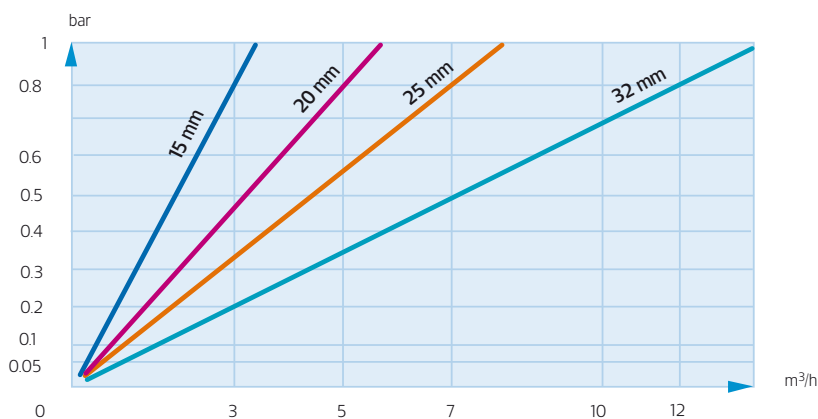
Indication Range	99999,999				
Minimum Scale Interval	0,05				
Typical Starting Flow Rate	m³/h	4	6	10	12
Testing Pressure	m³/h	25			
Communication pre-equipment	l/h	Cyble Technology			

Typical Accuracy Curve, Flodis range

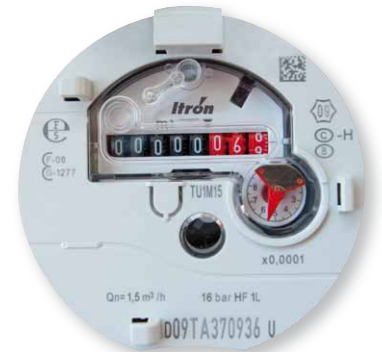


The dynamic range is defined as the Ratio (R) between the nominal and the minimum flowrate. The MID approval proves the Flodis real capacity to withstand to higher nominal flows ($Q_3 > Q_n$).

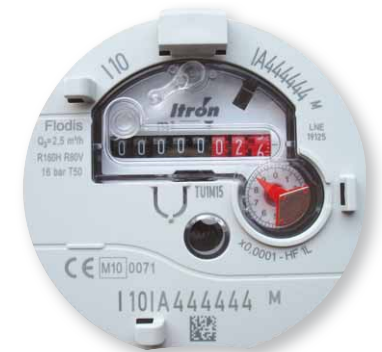
Head Loss



> Flodis indicator EEC marking



> Flodis indicator MID marking



> Flodis DN32



Dimensions and Weight

Nominal diameter (DN)	mm	15	20	25	32
Meter thread	inches	G 3/4"	G 1"	G 1" 1/4	G 1" 1/2
	mm	20 x 27	26 x 34	33 x 42	40 x 49
A	mm	110 - 170*	130 - 190	260	260
A1	mm	85	95	110	110
A2	mm	85	95	150	150
B	mm	104	123	130	130
B'	mm	183	203	210	210
C	mm	21.5	22.5	39	39
D	mm	46	64	64	67
E	mm	46	28	28	25
Weight kg	Kg	1	1.3	2	2.2
F (additional height with module)	mm		42		

* Other available lengths 115, 145, 165 mm (G 3/4"), 115 mm (G 3/4" 7/8") and 165, 190 mm (G 1").

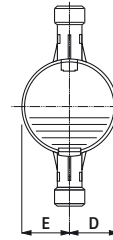
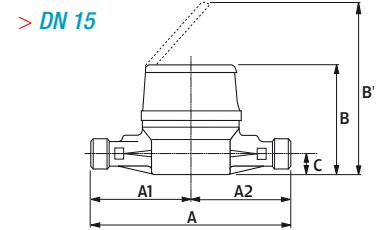
Pulse Value

Nominal diameter (DN)	HF Signal	LF Signal (according to K factor for Cyble Sensor Module)					
Meter range		K=1	K=2,5	K=10	K=25	K=100	K=1000
DN 15 to 32	1L	1L	2,5L	10L	25L	100L	1000L

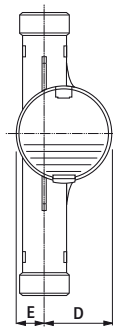
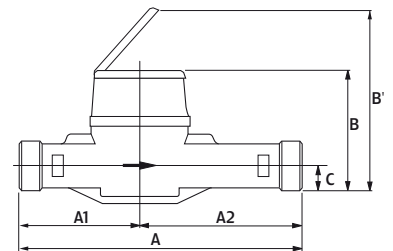
Options (none exhaustive list)

Flodis meters may be fitted with:

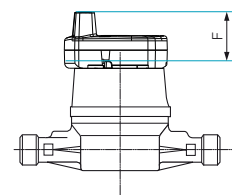
- > Copper can register in case of installation in humid environment
- > Non return-valve for outlet pipe
- > Removable cap
- > Cyble modules from the factory (please refer to specific leaflet)



> **DN 20, 25 and 32**



> **With Cyble module mounted**



About Itron Inc.

Itron Inc. is a leading technology provider to the global energy and water industries. Our company is the world's leading provider of metering, data collection and utility software solutions, with nearly 8,000 utilities worldwide relying on our technology to optimize the delivery and use of energy and water. Our products include electricity, gas and water meters, data collection and communication systems, including automated meter reading (AMR) and advanced metering infrastructure (AMI); meter data management and related software applications; as well as project management, installation, and consulting services. To know more, start here: www.itron.com

For more information, contact your local sales representative or agency.

Itron

9, rue Ampère
71031 Mâcon cedex
France
Phone: +33 3 85 29 39 00
Fax: +33 3 85 29 38 58
www.itron.com