

Solid Marker™

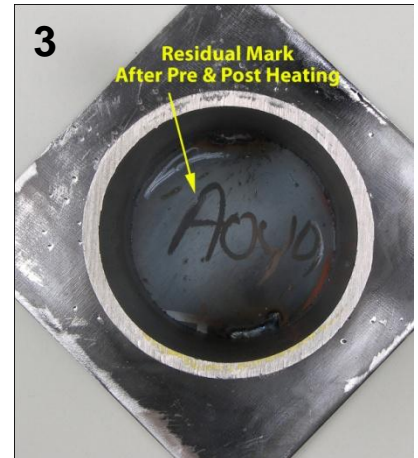
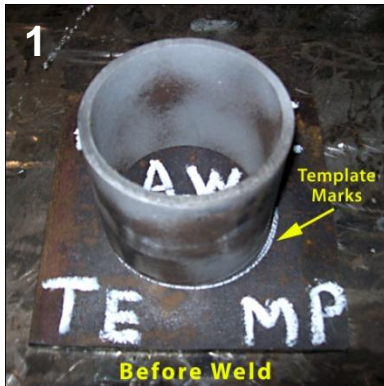
Permanent Solidified Paint Marker



American Welding Society

Sustaining Company Member

*After the flame is gone...
the markings can be seen!*



(Marks do not burn off close to welding torch, as shown)

Pre & Post Welding Temperature Markings using Solid Marker™

How does one notate the “pre” and “post” heat temperatures directly on the “base” and “weld” metals without vaporizing the markings? ...**ANSWER:** use Sakura’s Solid Marker solidified paint markers.

Instead of using other types of crayons or messy valve-action paint-markers that can drip, run, or pool on surfaces, use Solid Marker directly on the base and weld metals before pre-heating and welding.

Easy to use, Solid Marker is solidified paint that goes on smooth right from the start with no pumping or shaking required. Simply twist-up to advance marker material. Marks made with Solid Marker do not burn off when in close proximity of the welding torch tip as shown in the example photos.

When welds are made on surface temperatures *below* 392° F (200° C), the opaque marks are clearly visible. (see the markings outside and inside the tube structure in photos 1 and 2 above)

The Solid Marker markings remain readable on the metals even under high welding temperatures. At *higher temperatures above* 392° F (200° C) the color pigments burn away, but a visible “after-mark” is still discernable to the naked eye. (see the markings inside the tube structure in photo 3 above)

Welders and Welding Schools are discovering this secret about Sakura’s Solid Marker.



SAKURA OF AMERICA

Website: www.sakuraofamerica.com/industrial

Email: express@sakuraofamerica.com

Phone: 800-776-6257



SA03/10

Solid Marker™

Permanent Solidified Paint Marker



American Welding Society

Sustaining Company Member

Key Benefits

- ✓ Marks on almost any surface, dry or wet and even underwater!
- ✓ No dripping or mess—mark upside down, sideways, any angle
- ✓ Quick-drying formula, usually dries within 5 to 10 minutes
- ✓ Permanent when dry, water-proof & fade-resistant *(see features)
- ✓ Broad temperature range, one marker can do most jobs
- ✓ Use indoors or outdoors, even when raining
- ✓ Goes on smooth right from the start, just uncap and start marking
- ✓ Convenient twist-up mechanism advances marker material easily
- ✓ No hazardous material labeling or handling needed

Features

- 13mm wide tip, can be trimmed with blade for finer marks
- Working temperature range 14° to 392° F (-10° to 200° C)
- 11 colors include 8 regular and 3 bright fluorescent colors
- *Fluorescent colors are not fade-resistant, but are UV-light reflective and offer higher visibility in low-light conditions
- Marker material can be removed from non-porous surfaces using alcohol-based solvents
- Non-toxic formula, MSDS sheets available upon request



Ordering Information: Ask about our new Glow-in-the-Dark Solid Marker for other applications!

Bulk Open-Stock Product			
Item #	Solid Marker Color	Carton / Case Quantity	UPC Code
XSC-50	White	12 each / 432 each	084511-30766-7
XSC-49	Black	12 each / 432 each	084511-30765-0
XSC-36	Blue	12 each / 432 each	084511-30764-3
XSC-19	Red	12 each / 432 each	084511-30761-2
XSC-29	Green	12 each / 432 each	084511-30763-6
XSC-24	Purple	12 each / 432 each	084511-30762-9
XSC-5	Orange	12 each / 432 each	084511-30759-9
XSC-3	Yellow	12 each / 432 each	084511-30758-2
XSC-302	Fluorescent Yellow	12 each / 432 each	084511-38026-4
XSC-305	Fluorescent Orange	12 each / 432 each	084511-38027-1
XSC-320	Fluorescent Pink	12 each / 432 each	084511-38028-8
(Blister-Carded Product and Counter / Shelf Displays are also available)			



SAKURA OF AMERICA

Website: www.sakuraofamerica.com/industrial

Email: express@sakuraofamerica.com

Phone: 800-776-6257



SA03/10