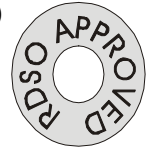


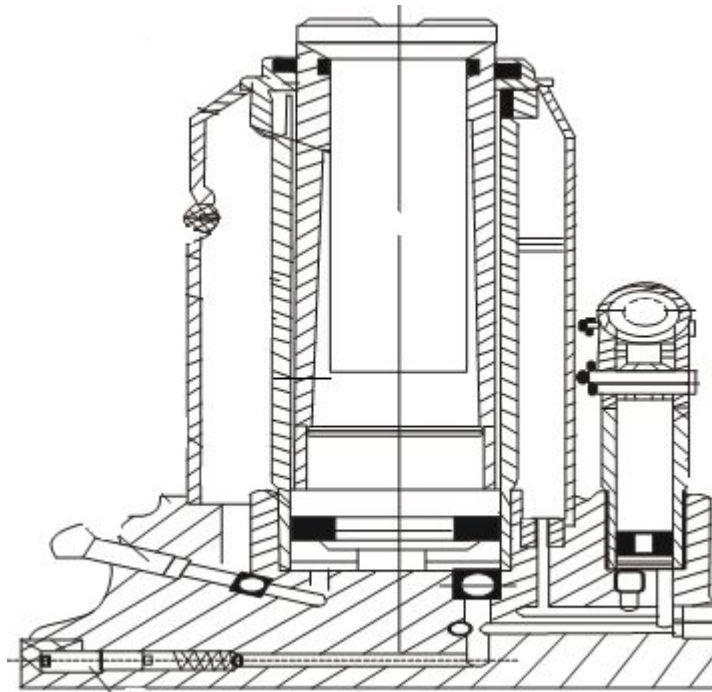
# LAKSHMI BRAND HYDRAULIC TRACK JACK LHTJ-15 (NI)

Specification no: TM/SM/31 dt: 08.05.1996



**INTRODUCTION:** Hydraulic Track Jack is a non-infringing, light weight and powerful track jack and it is specially designed, developed and manufactured for the maintenance of BG, MG concrete sleeper tracks and also for NG tracks of Indian Railways. It is made of high tensile alloy steel, has simple mechanism and requires minimum displacement of ballast for setting in position for operation. It is a most efficient and convenient equipment in the hands of permanent way engineers.

**CONSTRUCTION:** Hydraulic Track Jack is an integral type jack in which pump is integrated with hydraulic unit. In this type main components like Ram, Cylinder, Hydraulic Pump, Oil Tank and the Release Key is mounted on a Base Plate. This type has the advantage of compactness and simplicity. No separate Pump Unit is required for operating the jack.



## HYDRAULIC TRACK JACK

SL. NO.	CAPACITY IN TONES	CLOSE HEIGHT	HYD. LIFT	EXTENDED HEIGHT
1.	10mm (Approx)	166mm (Approx)	80mm (Approx)	246mm(Approx)

(Right reserve for modification or alteration without notice for betterment of the product)



## LAKSHMI INDUSTRIAL CORPORATION

48-52, BEHIND OLD TEHSIL, MEERUT CITY- 250002 (U.P)  
Admin Office: - Plot no.-10-11, Khasra no.-467, Mohkampur Industrial Area,  
Phase-II, Delhi Road, Meerut City-250103(U.P.)  
PH.NO: 0121-2401482 / 2950515

E-mail: [railwaymachines@gmail.com](mailto:railwaymachines@gmail.com)  
[www.lakshmirailwaymachines.com](http://www.lakshmirailwaymachines.com)