

Vantage Vue: Perfect for the home weather-watcher

The Vantage Vue weather station provides accurate, reliable weather monitoring in a self-contained, easy-to-install system. Sleek but tough, Vantage Vue gives you all the weather data you need:

- Inside/Outside Temperature
- Inside/Outside Humidity
- Barometric Pressure
- Wind Speed and Direction
- Dew Point
- Rainfall

Your outdoor sensor suite sets up in minutes and transmits data wirelessly to your console anywhere in your home, school or business. In addition to displaying current weather conditions and trends, Vantage Vue also boasts the innovative Weather Center button that displays weather variables over the last 25 days. Used with the optional WeatherLink® data logger and software, you'll be able to run additional analyses.

Features:

- **Easy-to-read backlit screen**
- **Glow-in-the-dark keypad**
- **Fast updates every 2.5 seconds (10x faster than the competition)**
- **Wireless transmission from station to console up to 1,000 ft. (300 m) (3x farther than the competition)**

1. TIME & DATE

View the current time and date; or time of sunrise/sunset.

2. MOON PHASE

See the eight phases of the moon.

3. FORECAST

Icons let you know to expect sun, partly cloudy, clouds, rain or snow.

4. TEMPERATURE & HUMIDITY

Console updates outside temperature every 10 seconds and inside temperature every minute. In addition, outside humidity updates every 50 seconds and inside humidity every minute.

5. RETRANSMITS

Main console can extend range to additional consoles up to 1,000 ft. (300 m).

6. BAROMETER

Five-position trend arrow shows whether barometric pressure is rising, falling or stable.

7. VARIABLE DISPLAY OPTIONS

See updated values every 10 seconds for heat index and wind chill to get a better "feel" for the outside environment.

8. RAIN

Console updates rain totals and rain rate every 20 seconds for the last 25 hours, days, months.

9. "CHANGE IN WEATHER SINCE YESTERDAY" FEATURE

Allows comparisons of changes of temperature and barometric pressure from day to day.

10. WEATHER CENTER

Weather Center provides additional information for each weather variable,

such as daily highs and lows, temperature changes by the hour and barometric value changes. Also displays astronomical data.

11. USER-FRIENDLY KEYPAD

Domed buttons are easy to feel and press. Glow-in-the-dark keypad buttons give you access to weather information at night. The "done" key returns user to "current" screen from anywhere in the program.

12. GRAPHS

Graphs the last 25 hours, days or months. View up to 50 graphs for temperature, rain, rain rate, wind and barometric pressure—all on the console.

13. "THIS TIME YESTERDAY" FEATURE

Data point on the graph indicates the weather during the same time yesterday to help compare and analyze day-to-day weather trends.

14. ALARMS

Set 22 simultaneous, different alarms to warn of dangers such as high winds, freezing temperatures, rain rate, heat index, flood warning and more.

15. WIND SPEED

See wind speed updates every 2.5 seconds. Displays wind speed in miles per hour, meters per second, kilometers per hour or knots. Provides the average and high wind speed for 2-minute and 10-minute intervals.



Multiple features included at an affordable price

The fully-integrated, corrosion-proof sensor suite is built to take all the weather your location can give—freezing winters, springtime thunderstorms, blistering summer sun and brisk autumn winds. The smaller profile sensor suite is designed to minimize visual impact in your yard or on your roof. The Vantage Vue's transmitters are also radio-compatible with Vantage Pro2, so you can mix and match components. For example, add a Vantage Vue console to your Vantage Pro2 system or extend your wireless range with long and short range repeaters. They all work together seamlessly.

6250 Vantage Vue
PATENTED



1. WIRELESS

Frequency-hopping spread spectrum radio ensures consistent transmission up to 1,000 ft. (300 m) line-of-sight from integrated sensor suite to console.

2. RAIN COLLECTOR

Self-emptying tipping spoon measures rain in 0.01" increments. Metric version measures in 0.2 mm increments.

3. ANEMOMETER

Records wind speeds as low as 2 mph (3 km/h) and is wind tunnel-tested to 180 mph (290 km/h).

4. WEATHER-PROOF HOUSING

Corrosion-resistant cover provides durability in extreme conditions. Electronics are potted or over-molded for added moisture shielding.

5. RADIATION SHIELD

Provides excellent protection from solar radiation and other sources of radiated and reflected heat for accurate temperature and humidity readings.

6. TEMPERATURE/RELATIVE HUMIDITY

Provides outside temperature readings from -40° F to 150° F (-40° C to 65° C). Also measures relative humidity from 1 to 100%.

7. EASY INSTALLATION

Installs easily and quickly with included mounting hardware kit.

8. WIND DIRECTION

Measures wind direction in compass points or degrees.

9. SOLAR PANEL

Energizes the station during the day. Onboard super capacitor provides power at night. Lithium battery provides backup when needed.

10. BUILT-IN BUBBLE LEVEL

Allows for more accurate installation and better data collection.



6250 Vantage Vue



View and store your weather data on your computer.

See our WeatherLink software on page 18.

« The Integrated Sensor Suite mounts on poles from 1.00" to 1.75" (2,54 cm to 4,45 cm) in diameter (pole not included).

Vantage Pro2: Professional and rugged

The Vantage Pro2 and Vantage Pro2 Plus offer the professional weather observer or serious weather enthusiast robust performance with a wide range of options and sensors. You'll get your own local forecast, highs/low, totals or averages and graphs for virtually all weather variables over the past 24 days, months or years—all without using a PC. Vantage Pro2 uses frequency-hopping spread spectrum radio to transmit and receive data up to 1,000 ft. (300 m) line-of-sight. Vantage Pro2 is also an excellent choice for emergency professionals, farmers, schools, researchers, municipalities and others to monitor wind and moisture conditions, irrigation requirements and potential flooding.

Features:

- **Large, backlit 3.5" × 6" (9 × 15 cm) LCD screen**
- **Fast updates every 2.5 seconds (10x faster than the competition)**
- **Wireless transmission reception from stations or repeaters up to 1000 ft. (300 m) away**
- **UV/solar radiation and evapotranspiration updates (Included with Vantage Pro2 Plus, optional for Vantage Pro2)**

1. CURRENT & HISTORICAL DATA

View current data or highs and lows for up to 24 days, months or years.

2. FORECAST

Icons let you know what to expect: sun, partly cloudy, rain or snow. 12-hour icon forecast plus 24–48 hour ticker-tape forecast at bottom of console screen.

3. MOON PHASE

Track the eight phases of the moon.

4. TIME & DATE

View the current time and date, time of sunrise/sunset, time and date of highs/low and time and date of a graphed data point.

5. WIRELESS

Frequency-hopping, spread spectrum radio provides three times the transmission distance of the competition, improved reception through multiple walls and greater immunity from RF interference.

6. RETRANSMITS

Main console can retransmit to additional consoles up to 1,000 ft. (300 m).

7. BAROMETER

Five-position trend arrow shows whether barometric pressure is rising, falling or steady.

8. FIXED DISPLAY

Fixed display area shows the outside temperature, humidity and barometric pressure at all times.

9. SOLAR RADIATION

Included on Vantage Pro2 Plus, view solar radiation, highs for the day, month and year as well as evapotranspiration and Temp/Hum/Sun/Wind (THSW) index. Set alarms for high readings.

10. UV

Included on Vantage Pro2 Plus, view current UV index, UV index for the day, the daily, monthly and yearly highs; or change scale to see UV in

current, hourly and daily MEDs. Set alarm to warn of high UV dose/index.

11. VARIABLE DISPLAY OPTIONS

View inside or additional temperatures, humidity, soil moisture, UV index, leaf wetness, wind chill, dew point and two different heat indices. (Additional sensors or stations may be required.)

12. RAIN

Umbrella icon appears when it is currently raining. View last 24 storm totals with start and end dates. View daily, monthly or yearly rainfall and rain rate.

13. STATUS INDICATOR

Blinks to let you know that data packets are being received.

14. CONTROL KEYS

Use arrow keys to scroll through data on graph or view highs and lows over time. Plus and minus keys simplify data toggling.

15. TICKER-TAPE DISPLAY

Provides expanded forecast details as well as additional information on current conditions. Displays more than 100 different messages.

16. GRAPHS

Graphs the last 24 hours, days or months of readings or highs and lows. View over 80 graphs, including additional analyses of temperature, rain, rain rate, wind and barometric pressure.

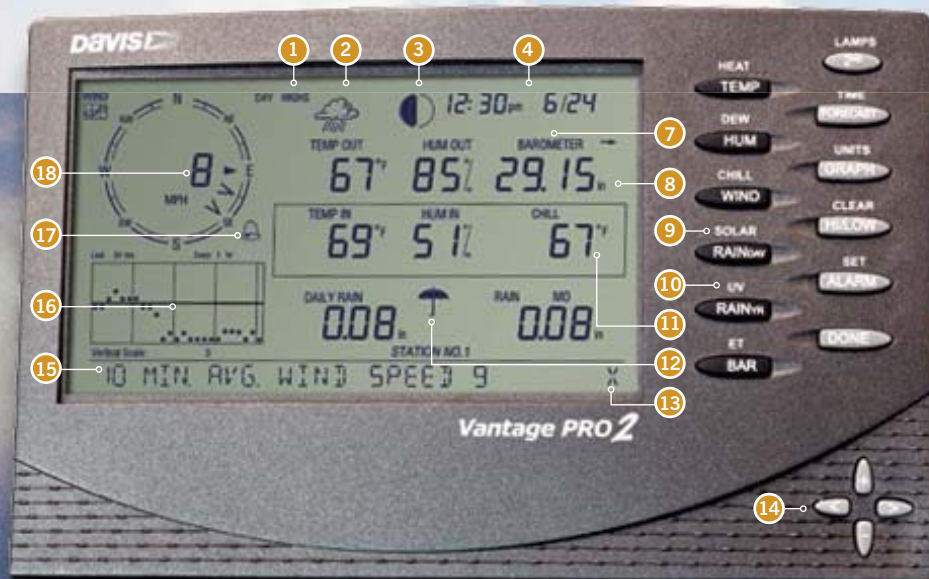
Vertical scale changes depending on what you are graphing.

17. ALARMS

Set more than 70 alarms for multiple functions simultaneously.

18. WIND

Compass rose with 16 points shows current and dominant wind direction. Inside the compass rose, view wind direction to 1° resolution, or view wind speed.



The ultimate in versatility and options

All Vantage Pro2 stations include a console and a versatile integrated sensor suite (pictured below) that combine our rain collector, temperature and humidity sensors and anemometer into one package. You can customize your Vantage Pro2 by adding consoles or the special-purpose options shown on the following pages. Vantage Pro2 weather stations are available in both wireless and cabled versions. Only the Vantage Pro2 Plus includes UV and solar sensors; however, both stations can be customized with a range of add-on options, such as soil moisture stations and long- and short-range repeaters.

Vantage Pro2 stations:
(See page 8 for models) PATENTED



1. ANEMOMETER

Includes both wind speed and wind direction sensors. Rugged components stand up to hurricane-force winds, yet are sensitive to the lightest breeze. Wind tunnel-tested to 200 mph (320 km/h).

Anemometer can be installed separately using 40 ft. (12 m) cable (included).

Optional Anemometer/Sensor Transmitter Kit allows you to mount the anemometer in a different location than the rain collector and the rest of the integrated sensor suite, up to 1,000 ft. (300 m) from your wireless console.

2. RAIN COLLECTOR

The Vantage Pro2 rain collector meets the collection area guidelines of the World Meteorological Organization. Reads rainfall amounts in 0.01" increments. Metric versions measure in 0,2 mm increments.

3. PASSIVE RADIATION SHIELD

The most effective passive shelter available. Protects your Temperature or Temperature/Humidity Sensor from solar radiation and other sources of radiated and reflected heat. Multi-plate construction for maximum airflow.

4. 24-HOUR FAN-ASPIRATED RADIATION SHIELD

Models with 24-hour fan-aspirated radiation shields include additional radiation shield plates and a second solar panel, which powers the motor-driven fan.

5. TEMPERATURE & HUMIDITY SENSORS

Located inside the radiation shield, which protects the sensors from solar radiation and other sources of radiated and reflected heat.

6. SOLAR PANEL

Powers the wireless station during the day and charges the super capacitor for night

operation. Lithium battery provides backup on cloudy days (solar panel is not included with cabled version).

7. WEATHER-RESISTANT SHELTER

Provides protection against the elements for the integrated sensor suite's electronic components.

8. SOLAR RADIATION AND UV SENSORS (SHOWN WITH VANTAGE PRO2 PLUS)

Includes sensors to track solar radiation, evapotranspiration and UV indices. Time measures are programmable to meet your specific needs. Sensors can be added separately to the Vantage Pro2.

9. OPTIONAL MOUNTING POLE

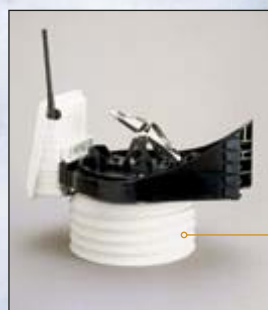
One of several installation options. For more, including our mounting tripod, see page 9.



View and store your weather data on your personal computer using WeatherLink software. Optional WeatherLink data logger and software offer additional analyses in a variety of versions. See page 18 for details.



6152 Wireless Vantage Pro2. Now includes built-in bubble level for more accurate installation. The aluminum-plated tipping bucket in our rain collector is self-emptying, corrosion resistant and laser calibrated for exceptional accuracy.



Pictured: 6163 Wireless Vantage Pro2 Plus with 24-Hour Fan-Aspirated Radiation Shield



Choose the station that's right for you—from 7 different Vantage models

Vantage Vue

Vantage Pro2
Shown here: 6152Vantage Pro2 Plus
Shown here: 6163

Davis accuracy in a self-contained, easy-to-install system.

Includes solar-powered transmitter.

Create a customized professional station with a wide range of options and sensors. Solar-powered transmitter and detachable anemometer.

Choose a cabled station for the most economical installation. Ideal for areas where lightning risk is minimal. Choose wireless for easiest installation, additional sensor options and reduced risk of lightning damage.

Includes UV & solar radiation sensors.

24-hour fan aspiration model achieves maximum accuracy of temperature & humidity readings by circulating the air. Ideal for arid climates.

The Davis line of Vantage weather stations is built to provide a full weather system. To maximize your weather watching, a variety of additional sensors and stations are available to make your weather station even more comprehensive.

6250
Wireless

6152C
Cabled

6152
Wireless

6153
Wireless
w/Fan

6162C
Cabled

6162
Wireless

6163
Wireless
w/Fan

CONSOLE

Should be run using the included AC-power adapter. Add three C batteries (not included) for backup during power outages.

May be run full-time using three C batteries (not included). May also be run using the included AC-power adapter.

12-hour advance forecast icons

24-48 hour advance forecast ticker-tape

Weather center with scroll-through data screens

INTEGRATED SENSOR SUITE

Anemometer, rain collector, temperature and humidity sensors

Detachable anemometer with 40' (12 m) cable

UV and Solar Radiation Sensors

DATA TRANSFER

100' (30 m) cable

Solar-powered transmitter with battery backup

RADIATION SHIELD

Standard radiation shield

Daytime Fan-Aspirated Radiation Shield

24-hour Fan-Aspirated Radiation Shield

ADD-ONS

Additional consoles to view data in more than one location

Special-purpose Wireless Leaf & Soil Moisture/Temperature Station

Wireless Temperature Station

Wireless Temperature/Humidity Station

Anemometer/Sensor Transmitter Kit

•

•

•

•

•

•

•

•

•

•

•

•

•

•

•

•

•

•

•

Optional

Optional

Optional

•

•

•

•

•

•

•

•

•

•

Optional

Optional

Optional

Optional

•

•

Optional

Optional

Optional

Optional

Optional

Optional

Optional

Optional

Optional

Optional

Optional

Optional

Optional

Optional

Optional

Optional

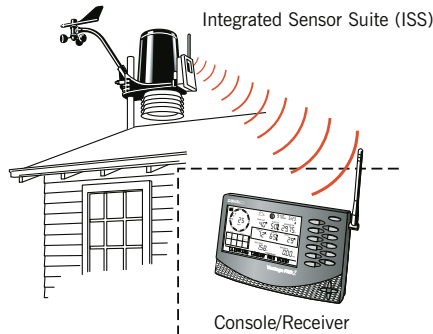
Optional

Three ways to upgrade your Vantage Pro2

Wireless

Benefits

- Listen to up to 8 channels of data
- Use multiple consoles with 1 station
- Move the console wherever you want



Plus

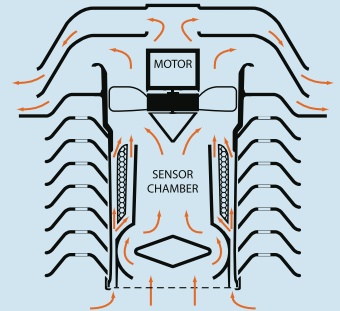
Benefits

- Solar and UV sensors come pre-installed
- Console calculates ET
- See page 8 for more information



24-Hour Fan-Aspirated Radiation Shield

Models 6153 and 6163 include our patented 24-hour fan-aspirated radiation shield for maximum accuracy of temperature and humidity readings. A motor-driven fan draws a constant airflow through the sensor chamber at 500 feet per minute (2.5 m/s). At night, when the effects of radiation are less, the solar-powered model runs on battery power and the airflow slows to 280 feet per minute (1.4 m/s). In far northern or southern latitudes, or in areas with extended periods of heavy cloud cover, there may not be enough sunlight to power the fan or recharge the battery during the winter. However, as the level of sunlight goes down, the need for fan aspiration also diminishes. The fan will start running and the battery will recharge as soon as sufficient sunlight returns.



Customize your installation

You need flexibility when deciding how to install your equipment. With that in mind, Davis provides a variety of installation options to suit your needs.



Daytime Fan-Aspirated Radiation Shield Kit

An economical solution for adding the benefits of fan aspiration by retrofitting your wireless or cabled Vantage Pro2 or Pro2 Plus. Less costly than our 24-hour fan-aspirated radiation shield, but nearly 75% as effective in reducing the effects of daytime radiation. With no backup battery, the fan only runs during daylight hours and will cease running at night when solar radiation effects are reduced. Retrofit kit for Vantage Pro2 and Vantage Pro2 Plus includes fan, solar panel, additional radiation shield plates and hardware.

7747 Daytime Fan-Aspirated Radiation Shield Kit

PATENTED



Mounting Pole Kit

Includes 2 galvanized steel poles, connector and mounting hardware. Poles measure 19.5" (0,50 m) and 21" (0,53 m) long. Assemble the 2 together to make a single 37.5" (0,95 m) long pole. Outside diameter is 1.31" (33 mm). Fits the Vantage Pro2 and Pro2 Plus, as well as the Vantage Vue integrated sensor suites.

7717 Mounting Pole Kit



Mounting Tripod

Includes galvanized steel tripod with tilting brackets on the base to mount on a roof or uneven terrain and 2 poles. Each pole measures 36.38" (0,92 m), but can be used together to make a single 69.75" (1,77 m) pole. Fits Vantage Pro2, Vantage Pro2 Plus and Vantage Vue.

7716 Mounting Tripod



PHOTO COURTESY OF ABC NEWS

PHOTO COURTESY OF ABC NEWS

Send and store data directly from outdoor sensors to your personal computer with Weather Envoy

Weather Envoy™

Weather Envoy, when used along with WeatherLink software, will collect and store the same data set as a Vantage Pro2 console. Connect it to your computer with hardware included with WeatherLink for easy and convenient downloading without a console/receiver. Use WeatherLink's automatic download feature, or manually download to your computer at your convenience, then use the WeatherLink software to view current conditions, graph and chart historical data, or even create your own weather web pages. (Also compatible with WeatherLinkIP.)

Like the wireless Vantage Pro2 console, wireless Weather Envoy can listen to up to 8 transmitters. However, the maximum number of each type of transmitter is limited (see comparison table on page 11).

It can also retransmit data to the console, effectively extending your station's range.

Weather Envoy includes its own barometer and inside temperature and humidity sensors. You can connect an external temperature probe (6475 or 6477) to replace a wireless Envoy's internal temperature probe (see page 16). Both the wireless and cabled versions include an AC-power adapter. Either may also be run using one of our solar power kits. The wireless model can also run on three AA batteries. Expected battery life is 4 to 6 months depending on the logging interval. Batteries should also be added to the cabled model for backup during power outages. **Requires WeatherLink (any model)**

6316 Wireless Weather Envoy

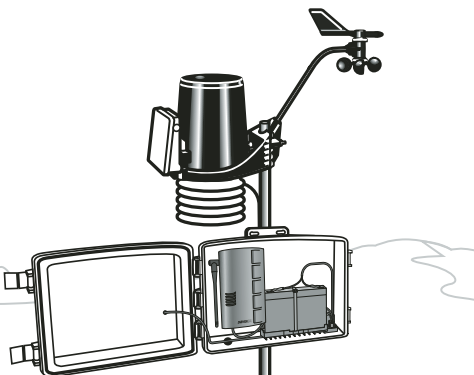
NIST



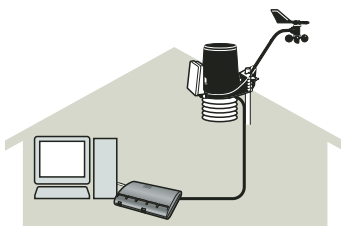
6316C Cabled Weather Envoy



Cabled Weather Envoy



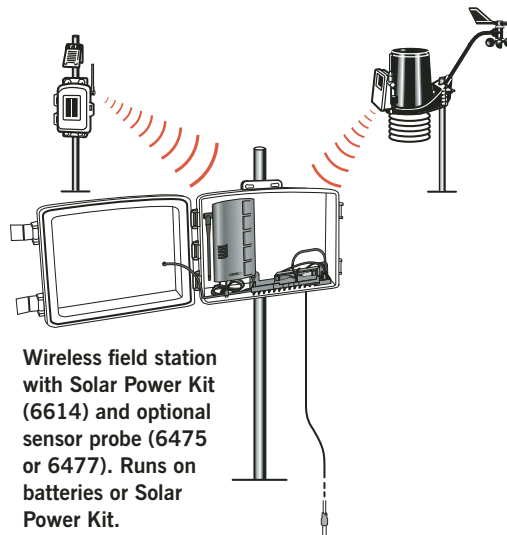
Cabled field station with Heavy Duty Solar Power Kit (6612).



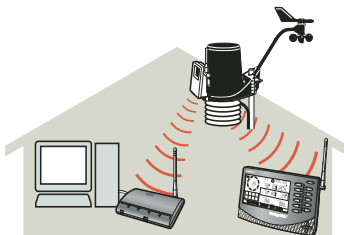
Can be used with one cabled ISS

Wireless Weather Envoy and Envoy8X

Each can listen to up to 8 transmitting stations



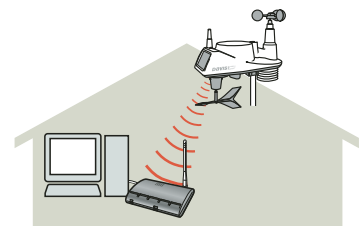
Wireless field station with Solar Power Kit (6614) and optional sensor probe (6475 or 6477). Runs on batteries or Solar Power Kit.



Transmit to both the Weather Envoy and console



Install Weather Envoy or Envoy8X close to your computer using the included USB cable and AC adapter.



Use Weather Envoy in place of Vantage Vue or Vantage Pro2 console.



Retransmit data to Weather Envoy from console

Envoy8X: Designed for customers who need data from multiple stations

Envoy8X™

With 32 times the memory of our Weather Envoy, Envoy8X receives and logs data simultaneously from up to 8 transmitting stations, in any combination—even 8 Integrated Sensor Suites or 8 Leaf Wetness & Soil Moisture/Temperature Stations! Doing the math, that means you can get data from 32 soil moisture sensors on one Envoy8X! Includes robust software that allows for data from many sensors and multiple Envoy8Xs to produce very large databases in Microsoft Access, MySQL or Microsoft SQL Server. You select which sensors to log, and choose a logging interval from 10 seconds to 2 hours. You can even add select third-party sensors that report readings in a 0–3 volt range. Data can be easily exported to a spreadsheet program such as Excel, or to

WeatherLink to take advantage of WeatherLink's graphing and reports.

Storage capacity depends upon the logging interval, but is so large that you can download a remote field installation when it's most convenient. For example, an Envoy8X logging 2 Integrated Sensor Suites and 2 Soil Moisture/Leaf Wetness stations at a 15-minute update interval will store **over 365 days** worth of data.

Envoy8X has built-in temperature and humidity sensors, as well as a barometer. The software will report data from those sensors as "inside" data, effectively giving you a ninth "station." You can connect an external temperature probe (6475 or 6477) to replace the Envoy8X's internal temperature probe (see page 16). Receives data from

all Vantage Pro2 and Vantage Vue radios and repeaters. Includes an AC-power adapter; may also be run using a Solar Power Kit (6612 or 6614) or on three AA batteries.

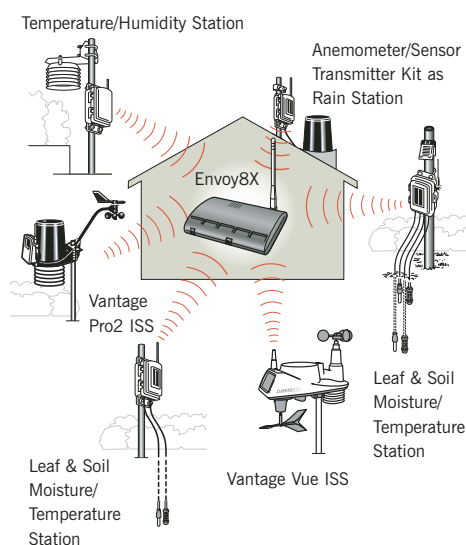
Expected battery life is 1 to 4 months depending on the logging interval. **Requires WeatherLink for Windows (USB or Serial). Not compatible with Vantage Connect.**

6318 Envoy8X



Envoy8X logs data from all your transmitters

Can listen to as many as 8 transmitting stations in any combination



Envoy8X Software System Requirements:

Windows XP, Vista or 7 operating system; 32 MB memory (64 MB recommended); VGA/SVGA monitor (800 x 600 or higher recommended). MS Access run-time engine is included. MS Excel, MySQL and SQL Server are not included.

Features	Weather Envoy	Envoy8X
Can listen to up to 8 transmitters	Yes	Yes
Maximum number of integrated sensor suites (ISS)	1	8
Maximum number of Anemometer/Sensor Transmitter kits	1*	8
Maximum number of Leaf & Soil Moisture/Temperature stations	1**	8
Maximum number of Temperature stations	3	8
Maximum number of Temperature/humidity stations	2	8
Stored memory capacity: 1 ISS @ 30 min. update	45 days	5 years
How is data viewed?	On PC using WeatherLink	On PC, using Envoy8X software and WeatherLink
Most frequent logging interval	1 minute	10 seconds
Works with WeatherLinkIP and WeatherLink for Mac	Yes	No
External databases supported	None	Access, MySQL, MS SQL Server
Can export data directly to Excel	No	Yes
Retransmits to another receiver	Yes	No
Works with 3rd-party sensors	No	Yes
Compatible with repeaters	Yes	Yes
Supports 0.1 mph (0.1 m/s) wind speed reading resolution	No	Yes***

* When used to extend Vantage Pro2 anemometer from the ISS. Otherwise, 0.

** Can use 2 only if one is leaf wetness and one is soil moisture.

*** When using a Vantage Vue ISS. (Vantage Vue console does not support this resolution.)

Introducing Vantage Connect: Bringing Even the Most Remote Weather Stations “Within Range” with Mobile Updates

Real-time weather updates delivered right to your smartphone or computer.

Vantage Connect offers a new way to connect to your weather data. Now you can get real-time weather data from remote locations that may not have reliable power, but do have good mobile reception, without leaving your home or office. Vantage Connect works with both wireless and cabled weather systems.



Vantage Connect

Vantage Connect combines the wireless receiving and data collection capabilities of a Vantage Pro2, Vantage Vue and Weather Envoy with mobile technology and an integrated data logger to transmit your weather data to a secure page on WeatherLink.com. View the data online using your computer or smartphone or download data to your PC for analysis, archiving and reporting using WeatherLink software (CD included). Vantage Connect can be configured to send you an immediate email or text message alarm when preset weather conditions, such as high wind or frost warnings, occur.

Partner Vantage Connect with a Vantage Vue ISS or any Vantage Pro2 ISS or additional transmitting stations (see page 13). Vantage Connect can either take the place of your console or work with your console to send your weather directly to the cloud. The cabled Vantage Connect installs using the 100 ft.

(30 m) cable from a cabled ISS. Wireless Vantage Connect has the same 1000 ft. (300 m) wireless range as our Vantage Vue and Vantage Pro2 consoles. You can connect an external temperature probe (6475 or 6477) to replace a wireless Vantage Connect's internal temperature probe (see page 16.)

Vantage Connect is a self-contained, weather resistant, solar-powered unit that comes with mounting hardware, WeatherLink software and your own WeatherLink Network account (see page 19 for more information). Requires an annual service plan and one-time activation fee; see Annual Service Plan for details.

Radio compatible with Vantage Pro2 and Vantage Vue transmitters and repeaters (see page 15). Solar-powered with battery backup. Computer system requirements: Windows XP or above. iPhone and Android compatible.

6620 Vantage Connect
6620C Cabled Vantage Connect



Annual Service Plan

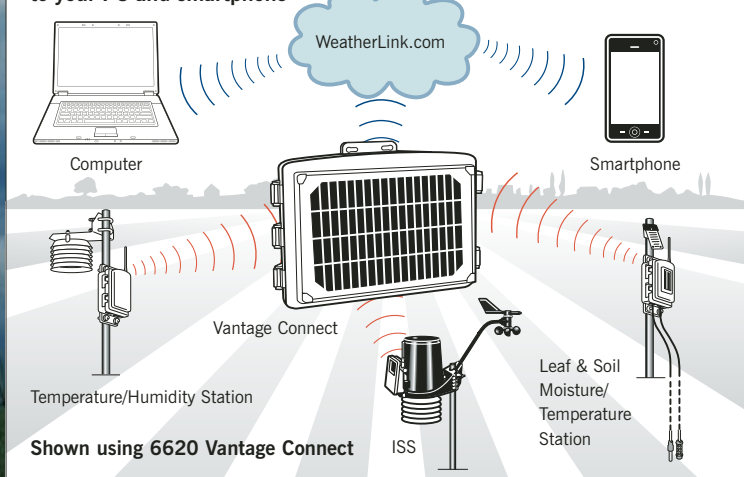
Hardware requires a one-time activation fee. Purchase of an annual service plan is necessary. Monthly subscriber fees depend on the frequency of your update interval.

CHOOSE YOUR PLAN (US ONLY)

Update Interval	Product Number	Annual Service Charge
5 minutes	6632	Contact Dealer
15 minutes	6634	Contact Dealer
60 minutes	6636	Contact Dealer

See www.weatherlink.com for product service plan information and availability for customers outside of the US.

Vantage Connect moves data from multiple stations to your PC and smartphone



Integrated Sensor Suites

Vantage Vue Integrated Sensor Suite

Because Vantage Vue's transmitters are radio-compatible with Vantage Pro2, you can mix and match components. The ISS can transmit to Vantage Vue, wireless Vantage Pro2 consoles, wireless Weather Envoy, Envoy8X and Vantage Connect. Mounting pole not included.

6357 Vantage Vue Integrated Sensor Suite

Both Vantage Vue and Vantage Pro2 integrated sensor suites can be used with Vantage Connect, wireless Weather Envoy, Envoy8X and with WeatherLink (see page 18).

Vantage Pro2 Integrated Sensor Suite

Includes all the features of the Vantage Pro2 and Pro2 Plus integrated sensor suites shown on page 8. Compatible with Vantage Vue and Vantage Pro2 consoles, Weather Envoy, Envoy8X and Vantage Connect. Mounting pole not included.

Wireless Integrated Sensor Suite

6322 with Standard Radiation Shield

6323 with 24-Hour Fan-Aspirated Radiation Shield

Cabled Integrated Sensor Suite*

6322C with Standard Radiation Shield

Wireless Integrated Sensor Suite Plus with UV and Solar Radiation Sensors

6327 with Standard Radiation Shield

6328 with 24-Hour Fan-Aspirated Radiation Shield

Cabled Integrated Sensor Suite Plus with UV and Solar Radiation Sensors*

6327C with Standard Radiation Shield

* Can only be used with a cabled Vantage Pro2 console/receiver or cabled Weather Envoy.



Add special-purpose stations or sensors

Customize your Vantage Pro2 weather station, Vantage Connect, Weather Envoy or Envoy8X by adding special-purpose stations and sensors. Each can receive data from up to eight different transmitting stations.



Wireless Leaf & Soil Moisture/Temperature Station (Solar-powered)

Includes a transmitter and backup battery inside a weather-resistant shelter. To view the data for up to 8 stations, add an Envoy8X and WeatherLink (see chart on page 11). Vantage Pro2 console/receiver or Weather Envoy and WeatherLink can only receive data from either:

- A single fully-populated station with 2 Leaf Wetness sensors, 4 Soil Moisture sensors, and 4 Temperature Probes, **OR**
- 2 partially-populated stations, 1 with 2 Leaf Wetness sensors and 2 Temperature Probes, and the other with 4 Soil Moisture sensors and 4 Temperature Probes.

Available in 2 models. Choose the model without sensors (6345), and add only those you need to meet your requirements. Or choose the Complete Soil Moisture/Temperature Station (6345CS), and add 1 or 2 leaf wetness sensors as desired. Compatible with the 6470 Stainless Steel Temperature Probe with 2-Wire Termination.

6345 Wireless Leaf & Soil Moisture/Temperature Station *without sensors*



6345CS Complete Soil Moisture/Temperature Station with 4 soil moisture sensors and 4 temperature probes



Wireless Temperature/Humidity Station (Battery-powered)

Features temperature and humidity sensors inside a protective radiation shield. The transmitter and lithium battery are protected by the weather-resistant shelter. Expected battery life is 6 to 9 months. Can be used with wireless Vantage Pro2 console/receiver, Weather Envoy or Envoy8X and WeatherLink. Includes hardware for mounting on fence post or pole. Mounting pole is not included.

6382 Wireless Temperature/Humidity Station



Wireless Temperature Station (Battery-powered)

Includes stainless steel temperature probe with 25 ft. (7.6 m) cable, transmitter and battery inside weather-resistant shelter and mounting hardware. Compatible with the wireless Vantage Pro2 console/receiver, Weather Envoy or Envoy8X and WeatherLink. Expected battery life is 6 to 9 months.

6372 Wireless Temperature Station



Extend the use of your anemometer

Anemometer/Sensor Transmitter Kit

With Vantage Pro2 and Weather Envoy, this solar-powered kit allows you to mount the anemometer in a different location than the integrated sensor suite—up to 1,000 ft. (300 m) from your wireless console/receiver. With Envoy8X, you can use this kit with any of our sensors including solar radiation, UV, temperature, anemometer, rain and third-party sensors that report in a range of 0–3 volts. For longer distances, add 1 or more wireless repeaters. Includes weather-resistant shelter for transmitter, solar panel, battery, and mounting hardware.



6332 Anemometer/Sensor Transmitter Kit



Universal Anemometer Interface

Allows you to use an R. M. Young or NRG anemometer to report wind speed and direction information to your Vantage Pro2 Integrated Sensor Suite or Anemometer/Sensor Transmitter Kit. It has been tested with the R. M. Young anemometer model number 05103 and with the NRG anemometer, model 1900 NRG #40C. However, the interface is not limited to those products. Solar powered with lithium battery backup. Comes with 40 ft. (12 m) of standard 4-conductor cable.

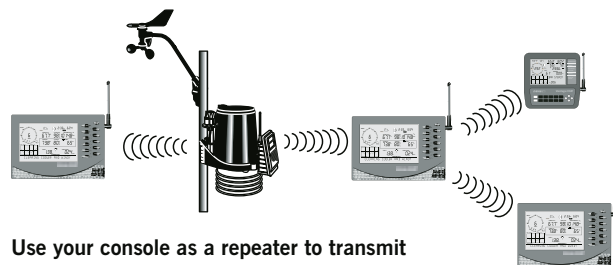


6336 Universal Anemometer Interface

Add another console and get the weather report wherever you are

Vantage Vue and Wireless Vantage Pro2 Console/Receivers

Add additional Vantage Pro2 or Vantage Vue consoles to display weather data in the den, bedroom, kitchen or even in your neighbor's house, if it's closer than 1,000 ft. (300 m). Vantage Vue transmitters are radio-compatible with Vantage Pro2 so you can mix and match components. Receive data directly from the outdoor sensors or use your console as a repeater, retransmitting the data from 1 console/receiver to another, extending the transmission range up to another 1,000 ft. (300 m). With Vantage Pro2 only, an additional console can receive data directly from any of our special-purpose wireless outdoor sensors (see pages 13–14 for additional details).



6351 Vantage Vue Console/Receiver

NIST



6312 Wireless Vantage Pro2 Console/Receiver

NIST



Extend the range of your wireless station—for miles on end!

For longer distances or to improve reception in troublesome areas, add 1 or more wireless repeaters. Use repeaters in a daisy chain, retransmitting from a single Vantage Pro2 or Vantage Vue Integrated Sensor Suite, or special-purpose station. You can also build a network of repeaters and wireless stations, with some repeaters listening to multiple stations, each with their own unique ID. For use with any Davis wireless transmitter and receiver.

Long-Range Wireless Repeaters

In our testing, we achieved an incredible 4 miles (6.4 km) of transmission distance using 2 of our long-range repeaters with Yagi antennas. Range varies depending on antenna height, the terrain and foliage, buildings, other man-made structures, and RF interference. Ideal for agricultural or research applications where long distances are an issue. This solar-powered model includes solar panel and lithium backup battery. Antennas are sold separately.

7654 Long-Range Repeater, Solar-Powered



Long-range repeater with 1 Yagi and 1 Omni antenna.

REPEATER DISTANCES				
Antenna Combination	Multiplier	Maximum Transmission Distance under optimal conditions **		
Dipole – Dipole *	1.00	1000'	0.2 mile	300 m
Dipole – Omni	1.58	1580'	0.3 mile	475 m
Dipole – Yagi	3.16	3160'	0.6 mile	950 m
Omni – Omni	2.50	2500'	0.5 mile	750 m
Omni – Yagi	5.00	5000'	1.0 mile	1500 m
Yagi – Yagi	10.00	10,000'	1.9 miles	3000 m

* Dipole antennas are found on all Davis wireless weather stations and standard repeaters.

** Typical distance will be less. Outdoors, line of sight with minor obstructions or interference, typical distance is about 50–80% of the maximum. Through walls or in areas with high RF interference, typical distance may be as low as 20–40% of the maximum.



Antennas for Long-Range Repeaters

For use with our long-range repeaters. Each repeater requires 2 antennas: 1 to receive data, and another to retransmit it. Omni antennas transmit or receive in all directions. Yagi antennas transmit or receive from a single direction, but have a longer transmission distance. Mix and match to suit your needs using the table above.

7656 Omni Antenna

7660 Yagi Antenna

Note: FCC regulations require that US customers select from the antennas above; customers outside the US must purchase third-party antennas in compliance with local regulations.



Standard Wireless Repeaters

Ideal for most applications, uses the same dipole antenna found on all of our wireless stations. Range is up to 1,000 ft. (300 m) outdoors, line of sight. Typical range through walls is 200 ft. to 400 ft. (60 to 120 m). AC-powered model includes power adapter. Solar-powered model includes solar panel and lithium backup battery.

7626 Standard Wireless Repeater, AC-Powered



7627 Standard Wireless Repeater, Solar-Powered



1. Solar Radiation Sensor

Measures solar radiation and solar energy. Diffuser element and housing are designed specifically for accurate cosine response. Silicon photo diode provides a good match to solar spectrum. Two-piece housing minimizes radiation heating, allows convection cooling of the sensor and prevents the trapping of water or dust. To mount next to a rain collector, add our Sensor Mounting Shelf (not included). Includes 2 ft. (0,6 m) cable.

6450 Solar Radiation Sensor



2. UV Sensor

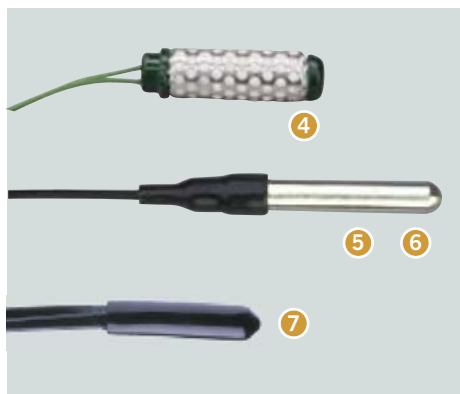
Measures the portion of the UV spectrum sensitive to human skin and known to cause sunburns. Allows you to display UV index, dose rate and daily and accumulated dose. Multi-layer filter provides a spectral response that closely matches the Erythema Action Spectrum. Diffuser provides excellent cosine response. Two-piece housing minimizes radiation heating, allows convection cooling of the sensor and prevents the trapping of water or dust. To mount next to a rain collector, add our Sensor Mounting Shelf (not included). Includes 2 ft. (0,6 m) cable.

6490 UV Sensor

3. Sensor Mounting Shelf

For mounting solar radiation and/or UV sensors. Rigid shelf with anodized aluminum posts and stainless steel hardware attaches easily next to the rain collector on the outside of the Vantage Pro2 Integrated Sensor Suite.

6673 Sensor Mounting Shelf



4. Soil Moisture Sensor

Uses electrical resistance Watermark soil moisture sensor to measure the moisture level of the soil. Does not require periodic maintenance during the growing season. Simply bury at the desired depth, then monitor moisture levels throughout the season. Add up to 4 sensors to a single Leaf & Soil Moisture/Temperature Station. Includes 15 ft. (4,6 m) cable.

6440 Soil Moisture Sensor



5. Stainless Steel Temperature Probe with 2-Wire Termination

Multi-purpose temperature probe with 2.5" (64 mm) long stainless steel housing. Use to measure temperature of air, soil, or water. Add up to four probes to a single Leaf & Soil Moisture/Temperature Station. Includes 15 ft. (4,6 m) direct-burial cable.

6470 Stainless Steel Temperature Probe with 2-Wire Termination



6. Stainless Steel Temperature Probe with RJ Connector

Multi-purpose temperature probe with 2.5" (64 mm) long stainless steel housing. Use to measure temperature of air, soil, or water. Use with Weather Envoy, Envoy8X and Anemometer/Sensor Transmitter Kit. Includes 25 ft. (7,6 m) cable.

6475 Stainless Steel Temperature Probe with RJ Connector



7. Temperature Probe with RJ Connector

Temperature probe with durable plastic housing. Use to measure temperature of air, soil or water. Use with Weather Envoy, Envoy8X and Anemometer/Sensor Transmitter Kit. Includes 25 ft. (7,6 m) cable.

6477 Temperature Probe with RJ Connector



8. Anemometer

Includes both wind speed and wind direction sensors. Rugged components stand up to hurricane-force winds, yet are sensitive to the lightest breeze. Wind-tunnel tested to speeds in excess of 200 miles per hour. Sealed stainless steel ball bearings for long life. Comes complete with mounting hardware. Includes 40 ft. (12 m) cable.

6410 Anemometer



9. Leaf Wetness Sensor

Use to monitor the level of surface moisture on foliage, with range from 0 (completely dry) to 15 (saturated). Add up to 2 sensors to a single Wireless Leaf & Soil Moisture/Temperature Station. Includes 40 ft. (12 m) cable.

6420 Leaf Wetness Sensor



10. Rain Collector

Designed to meet the guidelines of the World Meteorological Organization, our self-emptying rain collector with tipping bucket is exceptionally accurate. Measures in 0.01" or 0,2 mm increments. Includes 40 ft. (12 m) cable.

7852 Rain Collector



See page 23 for extension cables and maximum cable lengths.

Installing your Vantage Vue or Vantage Pro2 console, Weather Envoy or Envoy8X outside? Add solar power and shelter.



NEW! 1. Solar Power Kit

Large solar panel powers a wireless console or Weather Envoy inside a weather resistant shelter (outdoor sensors are powered by the solar panel on the sensor suite). Includes 5-watt solar panel, weather-resistant shelter, regulator circuit, 1.4 amp hour 6-volt rechargeable battery, mounting hardware and 10 ft. (3 m) cable.

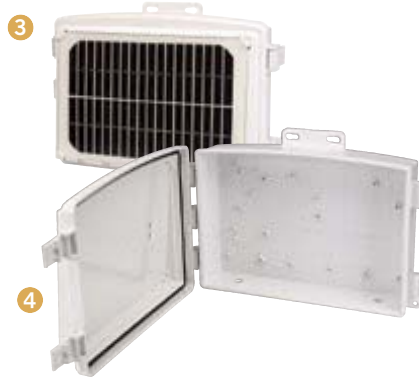
6614 Solar Power Kit

NEW! 2. Heavy Duty Solar Power Kit

Our large solar panel and a 12 amp hour battery provide enough power for a cabled console and outdoor sensor suite, an Envoy8X or wireless consoles where more power is needed. There is enough room inside the weather resistant shelter to mount an Envoy8X or Weather Envoy. When used with a Vantage Vue or Vantage Pro2 console, mount the console inside a Universal Shelter. Includes 5-watt solar panel, weather-resistant shelter, regulator circuit, 12 amp hour 6-volt rechargeable battery, mounting hardware and 10 ft. (3 m) cable.

6612 Heavy Duty Solar Power Kit

See www.davisnet.com/weather/uses to view various ways to use these kits and shelter.



NEW! 3. Extra Solar Panel Kit

Provides additional charging power to the battery in your solar power kit (6612 or 6614) or Vantage Connect (6620) for installations where sunlight is limited. The 5-watt solar panel is mounted on a weather-resistant shelter in which a console or Envoy can be mounted. Includes 5-watt solar panel, weather-resistant shelter, mounting hardware and a 4 ft. (1,2 m) cable.

6616 Extra Solar Panel Kit

NEW! 4. Universal Shelter

Protects console and other components located outdoors. Weather-resistant enclosure provides protection from the elements for the Vantage Pro2 console/receiver, Vantage Vue console/receiver with or without WeatherLink data logger, Weather Envoy and Envoy8X with WeatherLink data logger. Includes mounting hardware. Measures 13.75" x 10" x 4.18" (34,9 cm x 25,4 cm x 10,6 cm).

6618 Universal Shelter



5. Telephone Modem Adapter

For transmission of data from any serial port version of our WeatherLink data loggers using a modem.

6533 Telephone Modem Adapter for WeatherLink for Vantage Vue, Vantage Pro2, and Weather Envoy (not for use with Envoy8X).

6. Rain Collector Heater

Heater and insulation fit neatly inside the rain collector. For use in cold climates to measure freezing rain or the moisture content of snowfall. Requires access to AC power; cannot be run using a solar power kit. Includes 24-watt, 24-volt heater with thermal cut-off switch, control unit, insulating reflective blanket and AC-power adapter. Includes 50 ft. (15 m) cable.

7720 Rain Collector Heater

7. Radiation Shield

Received 5-Star rating from the World Meteorological Organization. Protects temperature sensors from solar radiation and radiated or reflected heat sources. Multi-plate construction for maximum airflow; use with Wireless Temperature Station or Leaf & Soil Moisture/Temperature Station and all temperature sensors.

7714 Radiation Shield

Assembly required.

Handheld wind speed indicators

WindScribe™

Ultrasonic wind meter reads wind speed, 5-second average and running average. Select from mph, km/h, fpm, m/s, f/s or knots, plus temperature and wind chill in tenths of °F or °C. Sensitive to breezes as low as 0.4 mph (.64 km/h), and as high as 150 mph (241 km/h). Includes 3-volt lithium battery. 3.5 oz (100 grams).

276 WindScribe



Wind Wizard™

Reads wind speed in mph, m/s and Beaufort. Readout dial is supported on sapphire jewel bearings and steadied by a rare-earth magnetic dampening system. Includes vinyl case and wrist lanyard. Folding handle quickly and securely latches into place. No batteries needed. 2.5 oz (71 g).

281 Wind Wizard



Turbo Meter™

Reads wind speed in mph, knots, fpm or m/s. Turbine suspended on sapphire jewel bearings responds to the lightest of winds. 3-digit display offers excellent viewing contrast both in bright sunlight and at night. Requires 3 AAA alkaline batteries (not included). 3 oz (85 g) not including batteries.

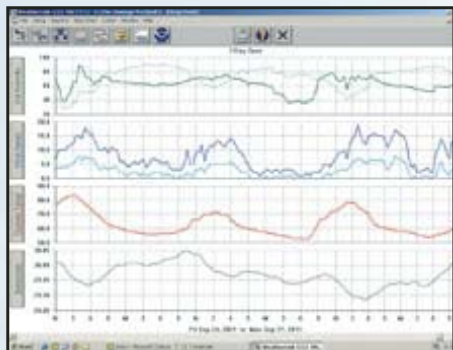
271 Turbo Meter

NIST



Your weather data, your computer. What could be better?

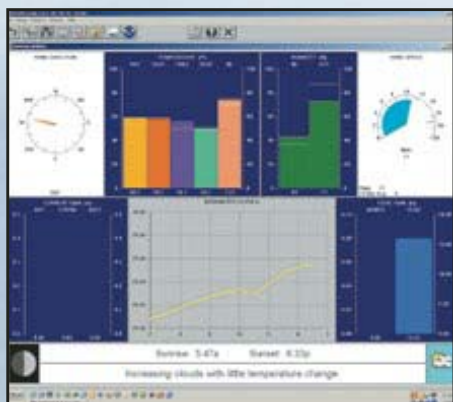
For the ultimate in weather monitoring, add WeatherLink software and data logger to any of our weather stations. The data logger fits neatly into your Vantage Pro2 or Vantage Vue console; or Weather Envoy or Envoy8X to collect and store your weather data. Connect the data logger to your computer to download the data to the software for detailed analysis and graphing. Choose our popular WeatherLinkIP model to automatically upload to the WeatherLink Network or see the chart on page 22 to determine which of our 8 models is best for you.



Graph data on a daily, weekly or yearly basis.



View multiple weather variables at the same time to see their relationships.



Check current conditions at a glance on the instant weather bulletin.

Expanded Reporting

- **More Weather Data.** View weather information not available on the console, including heating/cooling degree days and fuel-oil demand.
- **Optional Sensor Reporting.** With optional UV and solar radiation sensors, get details on sunburn risk and solar energy.

Sharing Your Weather Data

- **Create Your Own Reports.** Data can be exported to most popular spreadsheets, databases and word processing programs.
- **Weather Website.** Create a weather website or post weather conditions to a LAN. Add graphs, text lines or scrolling ticker-tapes, and upload other files (such as webcam images) along with weather data.
- **Citizen Weather Observer Program.** Submit your data to the National Weather Service to help develop improved weather prediction models. www.wxqa.com
- **The GLOBE Program.** Participate with other elementary through high schools in an international weather-related program. www.globe.gov

Data Storage & Transfer

- **User-Selectable Storage Interval.** Choose 1, 5, 10, 15, 30, 60 or 120 minutes. Store up to six months' worth of data depending on the storage interval.
- **WeatherLink Models with Standard Data Logger.** Log and store data, even when the data logger is not connected to your PC. Transfer the data as often as you like, or leave the software running to transfer it automatically each day.
- **Internet Protocol (IP) Model.** Upload your weather data to the Internet within minutes. No web skills required—WeatherLinkIP does all the work for you!

Alarm Output & Irrigation Control Models.

Both include our standard data logger plus a connector block that allows you to connect to your irrigation system, or to a heater, fan or other device.

- **Streaming Data Logger Models.** Provide a continuous stream of data to a PC or to a ham radio with a TNC modem.

WeatherLink with Standard Data Logger

Our most popular models, for everyone from the home weather buff to the most demanding scientific user. Available in versions for both PC and Mac. (Mac versions do not include all features; see the "Notes" in the chart on page 22.) All models include data logger, download cable, software on CD, *Getting Started Guide* and on-line help. (Envoy8X is compatible only with the 6510USB and 6510SER.)

WeatherLink for Vantage Pro2 and Vantage Vue
6510USB Windows USB Version
6510SER Windows Serial Version
6520 Mac® OS X Version



Data logger fits neatly into all Vantage Pro2, Vantage Vue, and Envoy models. (Appearance varies depending on model.)

Easily view your weather data on the web

WeatherLink.com is Davis' global weather network with thousands of weather stations reporting. Each reporting station has its own page on the site and is shown on the map as a temperature-color-coded dot that makes it easy to see temperatures worldwide. Click on a dot to see current weather conditions for that station. Each WeatherLink.com account also includes a private page with enough storage capacity to store up to two years' worth of weather data.



WeatherLinkIP data logger installed in Vantage Vue console.

Adding your station to the WeatherLink Network is as simple as "plug-and-play"—no web skills needed! Simple configuration steps are required to upload to third-party sites or set e-mail alert conditions.

On WeatherLink.com you can:

- Automatically upload data to third-party weather sites including CWOP (Citizen Weather Observer Program), Weather Underground, the GLOBE Program and more.
- Get e-mail alerts of current weather conditions or simple alarm conditions.
- Download the data to your PC for all the same powerful charting, graphing and analysis of WeatherLink software. Extra User License Kits allow you to download the data independently to multiple PCs—ideal for schools, agriculture, scientific fieldwork and remote locations.
- Store four times the data that can be stored on your data logger alone.
- View your data on the WeatherLink.com map or your iPhone or Android app.
- Allow others to view your current weather data, or flag your page as private.

Free Mobile Apps

See your WeatherLink Network station's data on your smartphone. Scan the applicable QR code below or search for WeatherLink on iTunes or the Google Play Store.



6556 WeatherLink iPhone App



6557 WeatherLink Android App

Below are three ways to join the WeatherLink Network:

WeatherLinkIP

You can post your weather data directly to WeatherLink.com without a PC using WeatherLinkIP. Simply plug the data logger into the back of your Vantage Pro2 or Vantage Vue console, or Weather Envoy and connect the cable to your cable/DSL/wireless broadband router. Within minutes, you'll be able to see your weather data live on the Internet. WeatherLinkIP uploads your data automatically even when your PC is not running—in fact, a PC is not even required to upload data! **Not compatible with Envoy8X. A router or hub and Internet service is required. No annual subscription required.**

6555 WeatherLinkIP



WeatherLink Network Annual Subscription*

for WeatherLink Serial and USB Data Loggers. Makes any Davis weather station (including classic Vantage Pro, Monitor, Wizard and Perception stations) into a WeatherLink.com station. With the annual subscription, your weather data is automatically uploaded to WeatherLink.com as long as your computer is on, and the software is running. **Not compatible with Envoy8X. Requires a PC, WeatherLink v6.0 (upgrade for free on www.davisnet.com/support/weather/downloads) and Internet service. Not required for WeatherLinkIP (6555) or Vantage Connect (6620).**

6558 WeatherLink Network Annual Subscription

Vantage Connect

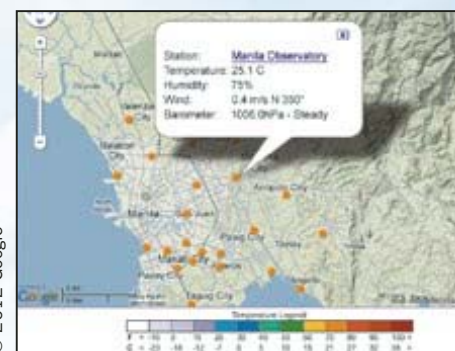
A WeatherLink Network page is included with the purchase of the Vantage Connect (6620). For more details, see page 12.



See it now at www.WeatherLink.com

WeatherLink® Network				
Carlinville, Illinois				
Current Conditions as of 3:47 PM Tuesday, October 23, 2012				
Station Summary	Current	Today's High	Today's Low	
Outside Temp	69.4 F	70.7 F	3:02 PM	61.3 F
Outside Humidity	81%	82%	10:47 AM	70%
Inside Temp	80.5 F	80.5 F	3:27 PM	78.8 F
Inside Humidity	38%	38%	12:00 AM	38%
Heat Index	71.0 F	72.8 F	3:23 PM	
Wind Chill	69.0 F			61.8 F
Dew Point	65.0 F	65.0 F	2:16 PM	57.0 F
Barometer	29.85"	29.94"	8:55 AM	29.89"
Bar Trend	Falling Slowly			
Wind Speed	2 Mph	18 Mph	12:07 PM	
Wind Direction	SSW 150°			
Solar Radiation	207 W/m²	714 W/m²	1:08 PM	
UV Radiation	0.0 Index	0.8 Index	11:37 AM	
12 Hour Forecast	Partially Cloudy, Rain within 12 hours			

See your weather data on your private page from any Internet-connected computer.



© 2012 Google

Click on stations worldwide to see a summary of current conditions.

WeatherLink® Network		
Savines le Lac, France		
12°	HIGH 21°C LOW 9°C	at 11:31 at 04:15
Wind	Calm	High Gust 14 km/h at 04:29
Humidity	81%	Falls to 75%
Rain	0.3mm	Seasonal Total 633.0mm
Barometer	1025.3mb	Rising Slowly

See detailed, current weather data for any station worldwide.

Integrated Pest Management Modules

Integrated Pest Management Modules (IPM) link your weather data to actual pest risk, giving you a powerful new tool in protecting your crops from pest damage. These add-on modules generate stepped risk levels to warn you when conditions are most susceptible to pest development. For full use of all the modules, we recommend:

- Vantage Pro2 or Pro2 Plus Weather Station
- Wireless Leaf & Soil Moisture/Temperature Station (without sensors)
- Leaf Wetness Sensor
- WeatherLink for Windows
- Vantage Connect for remote access to your weather data

While each software comes loaded with pest models for all known pests (including diseases, insects and mites), you can completely customize your IPM software to track the pests specific to your area. That data is transformed into a color-coded spreadsheet, illustrating the highest risk potentials in red. Because you use real-time data from your own vineyard or orchard weather sensors, the software's updated pest development algorithms will provide you with the most accurate, crop-specific risk assessment available. For use with all WeatherLink models (Mac excluded).

6571 Integrated Pest Management Module for Grapes

6572 Integrated Pest Management Module for Apples & Pears

6573 Integrated Pest Management Module for Stone Fruits NEW!

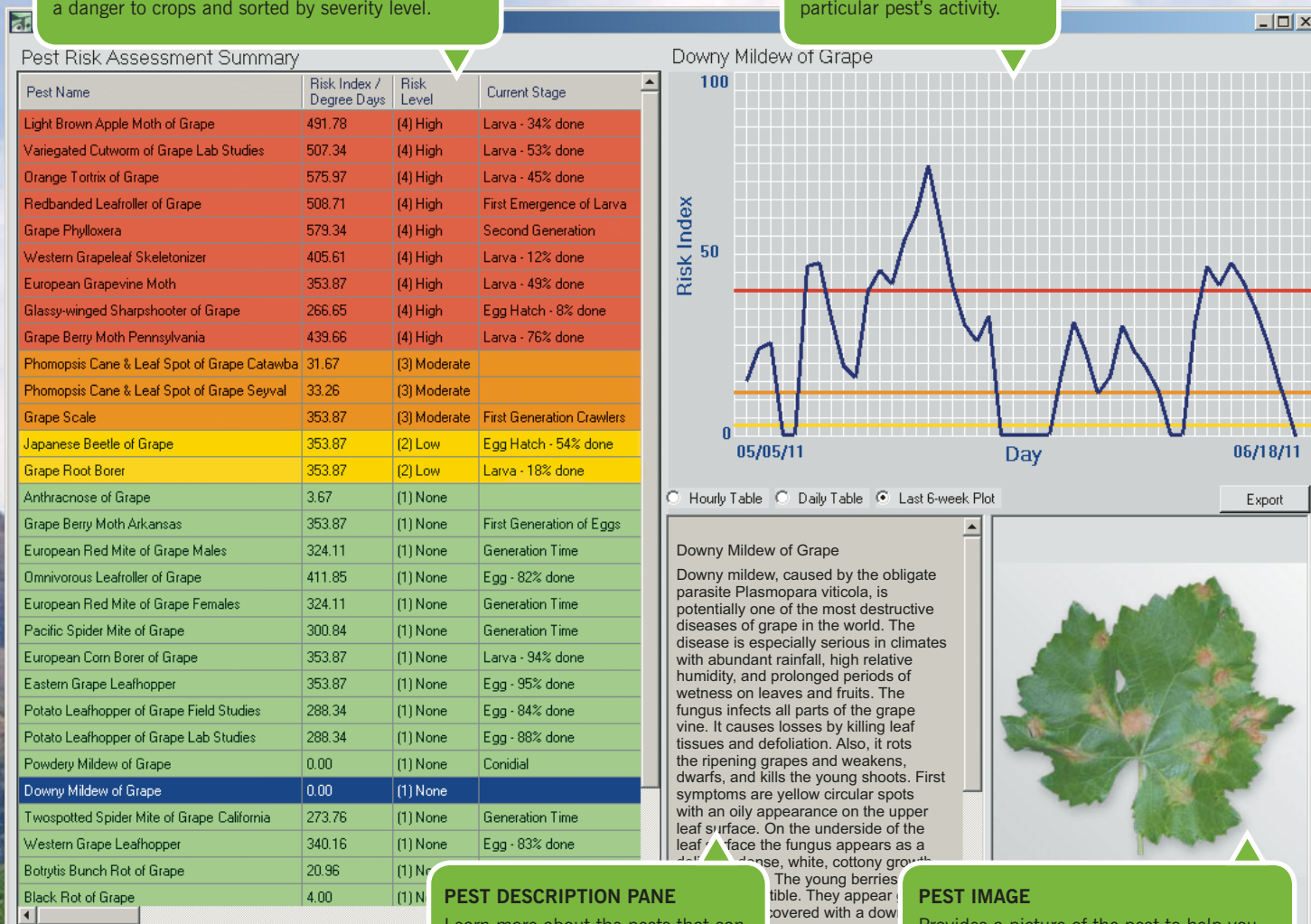


PEST RISK ASSESSMENT SUMMARY

Color-coded to identify which pests currently pose a danger to crops and sorted by severity level.

DATA PANE

Displays last 6 weeks of a particular pest's activity.



PEST DESCRIPTION PANE

Learn more about the pests that can potentially damage your crop.

PEST IMAGE

Provides a picture of the pest to help you easily identify it when you are in the field.

REQUIRES: Vantage Pro2 or Vantage Pro2 Plus with a Wireless Leaf & Soil Moisture/Temperature Station and Leaf Wetness Sensor; and WeatherLink for Windows (any model), version 5.6 or later. Windows XP SP3 or above. Compatible with Weather Envoy and Envoy8X.



IPM for Grapes

DISEASES

- Anthracnose
- Black Rot
- Botrytis Bunch Rot
- Downy Mildew
- Phomopsis Cane & Leaf Spot
- Powdery Mildew

PREDICTS 21 INSECTS AND MITES:

- Eastern Grape Leafhopper
- European Corn Borer
- European Grapevine Moth
- European Red Mite
- Glassy-winged Sharpshooter
- Grape Berry Moth
- Grape Phylloxera
- Grape Root Borer
- Grape Scale
- Japanese Beetle
- Light Brown Apple Moth
- Omnivorous Leafroller
- Orange Tortrix
- Pacific Spider Mite
- Potato Leafhopper
- Redbanded Leafroller
- Twospotted Spider Mite
- Variegated Cutworm
- Vine Mealybug
- Western Grape Leafhopper
- Western Grapeleaf Skeletonizer



IPM for Apples & Pears

DISEASES AND MODELS EMPLOYED

- 4 Apple Scab Models (Ascospore Maturity, Modified Mills Table & Revised Mills Table, A-Scab)
- 3 Fire Blight Models (CougarBlight, Maryblyt, Billings Integrated System)

- 2 Sooty Blotch & Flyspeck Models (Brown & Sutton, Cool Climate)
- Powdery Mildew of Apple
- Brown Spot of Pear
- Cedar Apple Rust
- Black Rot of Apple (Leaf & Fruit)
- Phenology Model of Apple Tree

PREDICTS 22 INSECTS AND MITES:

- Apple Maggot
- Codling Moth
- European Red Mite
- Fruittree Leafroller
- Green Apple Aphid
- Japanese Beetle
- Light Brown Apple Moth
- Lygus Bug
- Mediterranean Fruit Fly
- Obliquebanded Leafroller
- Omnivorous Leafroller
- Orange Tortrix
- Oriental Fruit Moth
- Pacific Spider Mite
- Pandemis Leafroller
- Potato Leafhopper
- Redbanded Leafroller
- San Jose Scale
- Spotted Tentiform Leafminer
- Tufted Apple Bud Moth
- Twospotted Spider Mite
- White Apple Leafhopper



NEW!

IPM for Stone Fruits

DISEASES AND MODELS EMPLOYED

- American Brown Rot
- Cherry Leaf Spot
- European Brown Rot
- Peach Leaf Curl
- Powdery Mildew of Cherry
- Prune Rust

- Shot Hole of Cherry and Peach
- Phenology Model of Peach, Plum & Prune, Nectarine, Apricot and Sweet Cherry Trees

PREDICTS 18 INSECTS AND MITES:

- Codling Moth
- European Red Mite
- Fruittree Leafroller
- Green Peach Aphid
- Japanese Beetle
- Lygus Bug
- Obliquebanded Leafroller
- Omnivorous Leafroller
- Orange Tortrix
- Oriental Fruit Moth
- Pacific Spider Mite
- Peach Twig Borer
- Peachtree Borer
- Plum Curculio
- Plum Fruit Moth
- San Jose Scale
- Twospotted Spider Mite
- Western Cherry Fruit Fly

Agricultural/Turf Management Software Module

Optional software module adds specialized reports for farmers, growers and turf managers with user-defined growing season and 24-hour period. Software reports:

- Evapotranspiration
- Chilling requirements
- Leaf wetness and soil temperature hours
- Growing degree-days
- Temperature-humidity hours
- Crop water management (with irrigation values and user-entered K-factor profiles)

For use with all WeatherLink models (except Mac version). Some reports require the use of optional sensors (e.g. temperature probes, leaf wetness sensor, etc.). Evapotranspiration reports require data from a solar radiation sensor.

6511 Agricultural/Turf Management Module



E-Mail/Phone Alert Software Module

Be alerted whenever conditions approach critical—24/7. Choose e-mail for detailed information on alarm conditions plus regularly scheduled updates on current weather conditions. Use the alert to send a text to your mobile phone.

For use with all WeatherLink models (Mac excluded). Because systems vary, the phone alert may not work outside the USA.

6512 E-Mail/Phone Alert Module



Critical real-time data right when you need it

WeatherLink for Alarm Output with Connector Block

Now you can automatically turn heaters, fans and other devices on or off using your weather station. For each of 4 outputs, you can enter up to 8 different weather parameters. Enter threshold values for each, select from 9 different test conditions, and link the entries together as you choose. For example, you could activate a fan to cool your house—but only if the difference between the inside and outside temperatures is more than 5°F, it's more than 72°F inside and it's between 5:00 p.m. and 6:00 a.m. Our connector block provides the interface between your weather station and an electrical device. For high-power devices, you may also need to add electrical relays (not supplied by Davis). Connection to a PC is not required except for initial setup.

6544 WeatherLink for Alarm Output



WeatherLink for Irrigation Control with Connector Block

Use your weather station to turn your irrigation system on or off automatically. Connector block connects directly to many irrigation systems. For industrial controllers, provides electronic pulses for wind, rain, and ET. For homeowners, looks at rain and ET values to determine when to inhibit watering. Can also set console alarms to inhibit watering when temperatures are too low or winds are too high. ET monitoring requires solar radiation sensor. Connection to a PC is not required except for initial setup.

6560 WeatherLink for Irrigation Control



WeatherLink for Emergency Response Teams with Streaming Data Logger and CAMEO link

For use with the free CAMEO (Computer-Aided Management of Emergency Operations) software developed by NOAA and the EPA. With Vantage Pro2, Vantage Vue or Weather Envoy, provides the real-time weather data needed to map the footprint of a hazardous plume, predict its dispersion and help make critical public safety decisions—all at just a fraction of the cost of other systems. For more about CAMEO, visit www.epa.gov/emergencies/content/cameo/index.htm.

6550 WeatherLink for Emergency Response Teams



WeatherLink for APRS with Streaming Data Logger

For ham radio operators, including storm chasers and volunteer weather watchers.

Connects a Vantage Pro2 console, Vantage Vue console or Weather Envoy to a ham radio with TNC modem for instant transmission of both your location and the local weather conditions via APRS. Connection to a PC is not required except for initial setup.

6540 WeatherLink for APRS



Choose the WeatherLink model that suits your needs

To get the most out of WeatherLink, choose the model that's right for you. All share the powerful weather data logging and reporting features discussed on page 18, while some add special features designed for specific user groups.

Extra User License Kit includes software on CD and extra user license.

SYSTEM REQUIREMENTS	MODEL	FOR USE WITH	DESIGNED FOR	NOTES	EXTRA USER LICENSE KIT
Windows, USB Windows XP and above	6510USB	Vantage Pro2, Vantage Vue, Weather Envoy or Envoy8X	General Purpose	For PCs with USB connections.	6510X
Windows, Serial Windows XP and above	6510SER	Vantage Pro2, Vantage Vue, Weather Envoy or Envoy8X	General Purpose	For PCs with serial port connections.	6510X
All models with streaming data loggers or connector blocks include all our normal WeatherLink features, plus additional features designed for special purposes. To download one of these models via USB, add our # 8434 USB-to-Serial Cable	6540	Vantage Pro2, Vantage Vue or Weather Envoy	APRS (Ham Radio)	Connects to a ham radio with TNC modem for instant streaming transmission of both your location and the local weather conditions via APRS (Automatic Position Reporting System).	6510X
	6544	Vantage Pro2, Vantage Vue or Weather Envoy	Alarm Output	Use to turn heaters, fans or other devices on or off depending on weather conditions. (For high-power devices, you may also need to add electrical relays.) Includes connector block.	6510X
	6550	Vantage Pro2, Vantage Vue or Weather Envoy	Emergency Response	For use with the free CAMEO software developed by NOAA and the EPA (not included). Provides streaming weather data to map a hazardous plume and predict its dispersion.	6510X
	6560	Vantage Pro2, Vantage Vue or Weather Envoy	Irrigation Control	Connects to many irrigation systems. Provides electronic pulses for wind, rain, and ET, or uses the alarm settings in the console. Includes connector block.	6510X
Internet DSL or cable connection and router with free ethernet port. Windows XP and above	6555	Vantage Pro2, Vantage Vue or Weather Envoy	Internet Updates	View downloaded data on your own weather website and be part of the WeatherLinkIP community.	6510X
Mac Mac OS X v 10.1 or above, Intel Mac Compatible	6520	Vantage Pro2, Vantage Vue or Weather Envoy	General Purpose	Does not log data from leaf wetness, soil moisture, solar radiation or UV sensors. Does not include Citizen Weather Observer or GLOBE capabilities. May not be used with E-Mail/Phone Alert or Agricultural/Turf Management Modules.	6520X