

## XH 充油防震壓力/荷重表 Hydraulic Pressure / Force Gauges



壓力錶型號選擇：How is a hydraulic pressure gauge model number is built up:

**X H O 2 . 5 C B M F F 2 P 1 K - M**

1. 壓力錶型式: O=充油式 V=真空式(非庫存品)	4. 連接螺牙: 2P=1/4PT 2N=1/4NPT 3P=3/8PT 3N=3/8NPT 4P=1/2PT 4N=1/2NPT	1. Gauge style O=Oil V=Vacuum(no stock)	4. Connect thread 2P=1/4PT 2N=1/4NPT 3P=3/8PT 3N=3/8NPT 4P=1/2PT 4N=1/2NPT
2. 錶面 2.5=2.5" 4=4" 6=6"	5. 壓力範圍: 以1,000為計算單位,例如: 30P=30,000psi 1K=1,000kg 1B=1,000bar 0.15K=150kg	2. Face 2.5=2.5" 4=4" 6=6"	5. Pressure range 1,000 for count radix and then show unit 30P=30,000psi 1K=1,000kg 1B=1,000bar 0.15K=150kg
3. 連接型式: CBM=埋入式無緣 CBMFF=埋入前緣中(邊)孔 LM=直立無緣 LMBF=直立背緣	6. 特殊: M=最大值指示保持	3. Connect style CBM=Center back mount CBMFF=Center back mount with front frange LM=Lower mount LMBF=Frange back with mount lower	6. Special M=Max. Indicator pointer

Pressure range : 0~15,000psi  
Accuracy : ±1%

型號 Model Number	錶面尺寸 Face (mm)	樣式 Style	連接螺牙尺寸 Connect thread	最大刻度 Pressure range
XHO2.5CBMFF2P1K	60	埋入前緣中(邊)孔 Center back mount with front fringe	1/4PT	0~1,000kgf/cm <sup>2</sup>
XHO2.5LM2N1B	60	直立無緣 Lower mount	1/4NPT	0~1,000bar
XHO2.5LM2N1K	60	直立無緣 Lower mount	1/4NPT	0~1,000kgf/cm <sup>2</sup>
XHO2.5LM2P0.15K	60	直立無緣 Lower mount	1/4PT	0~150kgf/cm <sup>2</sup>
XHO2.5LM2P1K	60	直立無緣 Lower mount	1/4PT	0~1,000kgf/cm <sup>2</sup>
XHO2.5LM2P0.7K-M	60	直立無緣-遺留式 Max. Indicating pointer	1/4PT	0~700kgf/cm <sup>2</sup>
XHO4CBM2P0.7K	100	埋入無緣 Center back mount	1/4PT	0~700kgf/cm <sup>2</sup>
XHO4CBM2P1K	100	埋入無緣 Center back mount	1/4PT	0~1,000kgf/cm <sup>2</sup>
XHO4CBM3P1K	100	埋入無緣 Center back mount	3/8PT	0~1,000kgf/cm <sup>2</sup>
XHO4CBMFF3P0.35K	100	埋入前緣 Center back mount	3/8PT	0~350kgf/cm <sup>2</sup>
XHO4CBMFF3P0.4K	100	埋入前緣 Center back mount	3/8PT	0~400kgf/cm <sup>2</sup>
XHO4LM2N1B	100	直立無緣 Lower mount	1/4NPT	0~1000bar
XHO4LM3P0.15K	100	直立無緣 Lower mount	3/8PT	0~150kgf/cm <sup>2</sup>
XHO4LM3P0.25K	100	直立無緣 Lower mount	3/8PT	0~250kgf/cm <sup>2</sup>
XHO4LM3P0.35K	100	直立無緣 Lower mount	3/8PT	0~350kgf/cm <sup>2</sup>
XHO4LM3P1K	100	直立無緣 Lower mount	3/8PT	0~1,000kgf/cm <sup>2</sup>
XHO4LM3P0.15K-M	100	直立無緣-遺留式 Max. Indicating pointer	3/8PT	0~150kgf/cm <sup>2</sup>
XHO4LM3P0.1K-M	100	直立無緣-遺留式 Max. Indicating pointer	3/8PT	0~100kgf/cm <sup>2</sup>
XHO4LM3P0.25K-M	100	直立無緣-遺留式 Max. Indicating pointer	3/8PT	0~250kgf/cm <sup>2</sup>
XHO4LM3P0.35K-M	100	直立無緣-遺留式 Max. Indicating pointer	3/8PT	0~350kgf/cm <sup>2</sup>
XHO4LM3P0.5K-M	100	直立無緣-遺留式 Max. Indicating pointer	3/8PT	0~500kgf/cm <sup>2</sup>
XHO4LM3P0.7K-M	100	直立無緣-遺留式 Max. Indicating pointer	3/8PT	0~700kgf/cm <sup>2</sup>
XHO4LM3P1K-M	100	直立無緣-遺留式 Max. Indicating pointer	3/8PT	0~1,000kgf/cm <sup>2</sup>
XHO4LM4G0.7B	100	直立背緣 Lower mount with back fringe	G 1/2"	0~30000psi
XHO6LMBF4N30P	100	直立背緣 Lower mount with back fringe	1/2NPT	0~30000psi

## XHD 電子式防震壓力 / 荷重表 Digital, Hydraulic Force & Pressure Gauges

電壓: AC110~220V  
Power: AC110~220V  
精確度: ±0.2%  
Accuracy: ±0.2%  
系統範圍可達 15,000 psi.  
Pressure range 15,000 psi.  
可依使用者設定 psi, bar, map,  
kg, lb..or user order.  
可, lb..等表示方式



型號 Model Number	樣式 Description	範圍 Pressure range (psi)
XHD-1	最大讀數保持 Max. Indicating keep	0~15,000
XHD-2	最大讀數不保持 Max. Indicating not keep	0~15,000

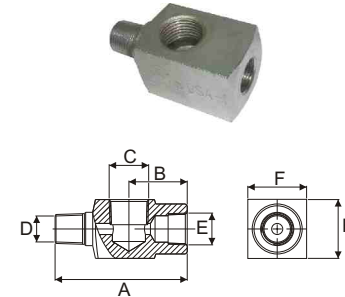
GSA Series  
最大使用壓力  
Maximum Operating Pressure  
700 bar

## GSA 錶接頭

- 液壓設備與壓力錶更易結合。
- 公接頭端可連接泵浦或油壓缸；母接頭端可連接油管或快速接頭；第三接口端即為壓力錶接頭端。

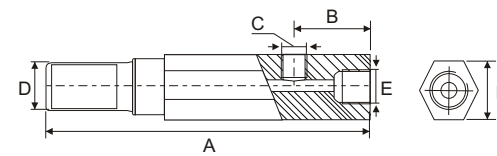
### Gauge Accessories

- ※ Easy mounting of pressure gauge into hydraulic system.
- ※ Male end screw into pump or cylinder port, female end accepts hose or coupler, third port is for gauge connection.



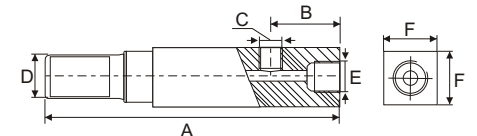
GSA-1

### 六角系列 Hexagon



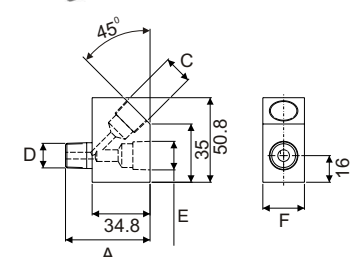
GSA-3H

### 四角系列 Tetragon



GSA-2, 3, 4, 5  
452, 453, 4552

### 45度角系列 45 degree



GSA-45333

型號 Model No.	錶接頭 Gauge port C	公接頭 Male end D	母接頭 Female end E	外型尺寸 Dimensions(mm)					
				A	B	C	D	E	F
GSA-1	1/2NPTF	3/8NPTF	3/8NPTF	71	31	1/2NPTF	3/8NPTF	3/8NPTF	32
GSA-2	1/2NPTF	3/8NPTF	3/8NPTF	155	35	1/2NPTF	3/8NPTF	3/8NPTF	32
GSA-3	1/4NPTF	3/8NPTF	3/8NPTF	133	48	1/4NPTF	3/8NPTF	3/8NPTF	32
GSA-4	1/2NPTF	1/4NPTF	3/8NPTF	111	35	1/2NPTF	1/4NPTF	3/8NPTF	32
GSA-5	3/8NPTF	3/8NPTF	3/8NPTF	133	35	3/8NPTF	3/8NPTF	3/8NPTF	32
GSA-452	1/4NPTF	1/4NPTF	1/4NPTF	50	—	1/4NPTF	1/4NPTF	1/4NPTF	38
GSA-453	1/4NPTF	3/8NPTF	3/8NPTF	50	—	1/4NPTF	3/8NPTF	3/8NPTF	38
GSA-4552	1/4NPT	1/4NPT	—	55	12	1/4NPT	1/4NPT	—	19
GSA-3H	1/4NPTF	3/8NPTF	3/8NPTF	90	28	1/4NPTF	3/8NPTF	3/8NPTF	26H
GSA-45333	3/8NPTF	3/8NPTF	3/8NPTF	50.8	—	3/8NPTF	3/8NPTF	3/8NPTF	25