

# SPE-3000 SERIES

## SPE-3000

- 省電易攜帶，操作簡便。
- 適用各類型操作場合。
- 捉把與外殼一體成型。
- 均附有10呎線控裝置。
- 碳刷馬達，頻繁啟動耐操。

## 電動油壓泵浦 Hydraulic Electric Pump

- ※ Requires less energy, simple and easy to operate.
- ※ Suitable for any industrial application.
- ※ Handle and casing built together.
- ※ Equipped with 10ft remote line.
- ※ Carbon brush motor, working frequently.

## SPE-3000 Series

- Reservoir Capacity:**  
3000-6000c.c
- Flow at rated pressure:**  
4-0.4 L
- Motor Size:**  
0.37kW(0.5 hp)
- Maximum Operating Pressure:**  
700 bar

電泵型號選擇：Custom build your Electric Pump:

SPE-3000 **A** **1** **5** **1** **LT** **PBG**

### 1. 閥門樣式

- A. 常開內建三口二位電磁閥：前進 保持 回復
- B. 常閉線控自動洩壓：前進 回復  
(馬達停止即洩壓 適用於衝床(打孔機)、壓樁機 或切削時使用)
- C. 手動三口二位控制閥：前進 保持 手動回復
- D. 手動四口三位控制閥：前進 保持 手動回復

### 2. 電壓/安培

- 1=115V/7.5A
- 2=230V/2.8A

### 3. Hz

- 5=50/60Hz

### 4. 相數

- 1=1ph

### 5. 油箱

- 無字樣=3000c.c PU 油箱
- LT=8000c.c 鐵製油箱
- ★ 亦可依客戶訂製

### 6. 配件

- PJ=壓力調整開關
- PB=外部調壓閥
- G=壓力錶

### 1. Valve

- A. 3way/ 2position built-in Solenoid Valve : Advance Hold Return
- B. Remote Release Pressure : Advance Return (Ideal for punching, crimping and cutting)
- C. 3way/ 2position Manual Valve : Advance Hold Manual return
- D. 4way/ 3position Manual Valve : Advance Hold Manual return

### 2. Voltage/A

- 1=115V/7.5A
- 2=230V/2.8A

### 3. Hz

- 5=50/60Hz

### 4. Phase

- 1=1ph

### 5. Reservoir

- No word=3000c.c PU reservoir
- LT=8000c.c Iron reservoir
- ★ User can order suitable reservoir.



SPE-3000C



LT=鐵製油箱  
Iron reservoir



PJ=壓力調整開關  
Pressure Adjuster Switch  
Part No.:SPG-800-CE80



G=充油式壓力錶  
Pressure Gauge



PB=調整開關  
Pressure Adjuster Switch  
Part No.:SPS-7A-700

### 控制閥 Control Valve

單動液壓千斤頂可選用3口2位電磁閥(內建)或手動控制閥。  
建議型號：SPE-3000A(電磁閥)或SPE-3000C(手動閥)

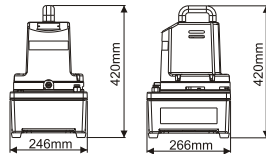
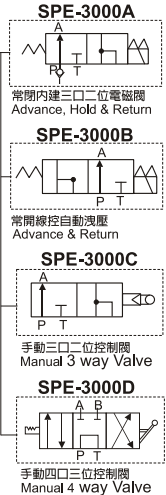
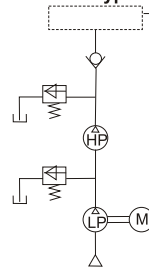
A single-acting cylinder must be powered by a pump with a 3-way solenoid (built-in) or manual valve.

Compare Model : SPE-3000APS (solenoid) or SPE-3000CPS (manual)

雙動液壓千斤頂必須搭配具4口閥門的液壓泵浦。  
建議型號：SPE-3000D

A double-acting cylinder must be powered by a pump with a 4-way valve. Compare Model : SPE-3000D

### 閥門樣式 Valve type



型號 Model Number	馬達 Motor	最大使用壓力 Max. Pressure	輸出壓力 Pressure Rating		輸出油量 Output flow rate		噪音值 dBa at Idle and 700bar	重量 (含油) Weight (include oil)	外型尺寸 Dimension
			(psi)/(bar)	(psi)/(bar)	1 <sup>st</sup> stage	2 <sup>nd</sup> stage			
SPE-3000	0.37(0.5) kW(hp)	10,000(700) (psi)/(bar)	200(14)	10,000(700)	4	0.4	85-90	16	250*270*400 (mm)
SPE-3000 LT	0.37(0.5) kW(hp)	10,000(700) (psi)/(bar)	200(14)	10,000(700)	4	0.4	85-90	24	300*350*460 (mm)