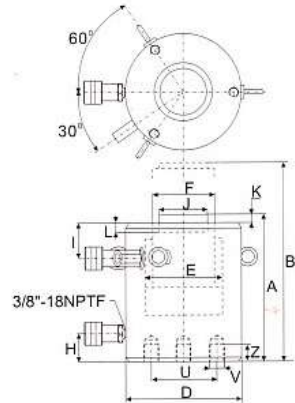


CSLRG-50 to CSLRG-150 model



CSLRG-200 to CSLRG-1600 model

Model Number 型號	Cylinder Cap. 能力 ton(kN)	Stroke 揚程 (mm)	Max. Cylinder Cap. 最大出力		Cylinder Effective Area 受壓面積		Oil Cap. 總油量		Coll. Height 本身高 A (mm)	Ext. Height 伸長總高 B (mm)	Outside Diam. 外徑 D (mm)	Cyl. Bore Diam. 內徑 E (mm)	Plunger Diam. 主軸直徑 F (mm)	Base to Advance Port 底部前進油孔位置 H (mm)	Top to Retract Port 頂部回油油孔位置 I (mm)	Standard Saddle Diam. 墊塊直徑 J (mm)	Saddle Protrusion from plng. 凸出高度 K (mm)	Depth of Plunger Hole 主軸孔深度 L (mm)	Base Mounting Hole Dimensions 底座螺孔			Weight 總重 (kg)
			Push 推 (kN)	Pull 拉 (kN)	Push 推 (cm ²)	Pull 拉 (cm ²)	Push 推 (cm ³)	Pull 拉 (cm ³)											Bolt Cir. Diam. 底座孔距 U (mm)	Thread 底座螺紋 V (mm)	Thread Depth 螺紋深度 Z (mm)	
CSLRG-502	50 (539)	50	539	269	76.2	37.7	385	192	162	212	130	98.6	70.0	42	33	50	1	19	65	2xM12	22	17
CSLRG-504		100	539	269	76.2	37.7	770	385	212	312	130	98.6	70.0	42	33	50	1	19	65	2xM12	22	20
CSLRG-506		150	539	269	76.2	37.7	1155	577	262	412	130	98.6	70.0	42	33	50	1	19	65	2xM12	22	23
CSLRG-508		200	539	269	76.2	37.7	1540	770	312	512	130	98.6	70.0	42	33	50	1	19	65	2xM12	22	27
CSLRG-5010		250	539	269	76.2	37.7	1924	962	362	612	130	98.6	70.0	42	33	50	1	19	65	2xM12	22	31
CSLRG-5012		300	539	269	76.2	37.7	2309	1155	412	712	130	98.6	70.0	42	33	50	1	19	65	2xM12	22	34
CSLRG-1002	100 (929)	50	929	433	132.7	61.9	664	309	182	232	165	130.0	95.0	54	48	75	1	19	95	2xM12	22	19
CSLRG-1004		100	929	433	132.7	61.9	1327	619	232	332	165	130.0	95.0	54	48	75	1	19	95	2xM12	22	29
CSLRG-1006		150	929	433	132.7	61.9	1991	928	282	432	165	130.0	95.0	54	48	75	1	19	95	2xM12	22	40
CSLRG-1008		200	929	433	132.7	61.9	2655	1237	332	532	165	130.0	95.0	54	48	75	1	19	95	2xM12	22	50
CSLRG-10010		250	929	433	132.7	61.9	3318	1546	382	632	165	130.0	95.0	54	48	75	1	19	95	2xM12	22	61
CSLRG-10012		300	929	433	132.7	61.9	3982	1856	432	732	165	130.0	95.0	54	48	75	1	19	95	2xM12	22	71
CSLRG-1502	150 (1390)	50	1390	675	198.6	96.5	993	482	196	246	205	159.0	114.0	61	56	94	1	19	130	2xM12	22	39
CSLRG-1504		100	1390	675	198.6	96.5	1986	965	246	346	205	159.0	114.0	61	56	94	1	19	130	2xM12	22	52
CSLRG-1506		150	1390	675	198.6	96.5	2978	1447	296	446	205	159.0	114.0	61	56	94	1	19	130	2xM12	22	65
CSLRG-1508		200	1390	675	198.6	96.5	3971	1930	346	546	205	159.0	114.0	61	56	94	1	19	130	2xM12	22	78
CSLRG-15010		250	1390	675	198.6	96.5	4964	2412	396	646	205	159.0	114.0	61	56	94	1	19	130	2xM12	22	92
CSLRG-15012		300	1390	675	198.6	96.5	5957	2895	446	746	205	159.0	114.0	61	56	94	1	19	130	2xM12	22	105
CSLRG-2002	200 (1861)	50	1861	889	265.9	127.0	1330	635	216	266	235	184.0	133.1	67	56	113	1	24	165	3xM12	22	55
CSLRG-2006		150	1861	889	265.9	127.0	3989	1905	316	466	235	184.0	133.1	67	56	113	1	24	165	3xM12	22	91
CSLRG-20012		300	1861	889	265.9	127.0	7977	3809	466	766	235	184.0	133.1	67	56	113	1	24	165	3xM12	22	146
CSLRG-2502	250 (2565)	50	2565	1068	366.4	152.6	1832	763	235	285	275	216.0	165.1	73	78	145	1	24	190	3xM12	22	102
CSLRG-2506		150	2565	1068	366.4	152.6	5497	2289	335	485	275	216.0	165.1	73	78	145	1	24	190	3xM12	22	136
CSLRG-25012		300	2565	1068	366.4	152.6	10993	4578	485	785	275	216.0	165.1	73	78	145	1	24	190	3xM12	22	207
CSLRG-3002	300 (3193)	50	3193	1060	456.2	151.4	2281	757	312	362	310	241.0	197.1	101	75	177	1	19	180	3xM16	36	184
CSLRG-3006		150	3193	1060	456.2	151.4	6843	2270	412	562	310	241.0	197.1	101	75	177	1	19	180	3xM16	36	232
CSLRG-30012		300	3193	1060	456.2	151.4	13685	4541	562	862	310	241.0	197.1	101	75	177	1	19	180	3xM16	36	303
CSLRG-4002	400 (3919)	50	3919	1354	559.9	193.5	2800	967	375	425	350	267.0	216.0	114	105	196	3	27	205	3xM16	36	270
CSLRG-4006		150	3919	1354	559.9	193.5	8399	2902	475	625	350	267.0	216.0	114	105	196	3	27	205	3xM16	36	330
CSLRG-40012		300	3919	1354	559.9	193.5	16797	5804	625	925	350	267.0	216.0	114	105	196	3	27	205	3xM16	36	421
CSLRG-5002	500 (5114)	50	5114	1733	730.6	247.6	3653	1238	419	469	400	305.0	248.0	114	135	228	3	27	250	3xM24	38	401
CSLRG-5006		150	5114	1733	730.6	247.6	10959	3713	519	669	400	305.0	248.0	114	135	228	3	27	250	3xM24	38	480
CSLRG-50012		300	5114	1733	730.6	247.6	21918	7427	669	969	400	305.0	248.0	114	135	228	3	27	250	3xM24	38	599
CSLRG-6002	600 (5987)	50	5987	2068	855.3	295.4	4276	1477	429	479	430	330.0	267.0	114	135	247	3	27	275	3xM24	38	474
CSLRG-6006		150	2987	2068	855.3	295.4	12829	4431	529	679	430	330.0	267.0	114	135	247	3	27	275	3xM24	38	565
CSLRG-60012		300	5987	2068	855.3	295.4	25659	8862	679	979	430	330.0	267.0	114	135	247	3	27	275	3xM24	38	701
CSLRG-8002	800 (8234)	50	8234	2709	1176.3	387.0	5881	1935	474	524	505	387.0	317.0	149	135	297	3	27	330	3xM24	38	741
CSLRG-8006		150	8234	2709	1176.3	387.0	17644	5806	574	724	505	387.0	317.0	149	135	297	3	27	330	3xM24	38	880
CSLRG-80012		300	8234	2709	1176.3	387.0	35288	11611	724	1024	505	387.0	317.0	149	135	297	3	27	330	3xM24	38	1058
CSLRG-10002	1000 (10260)	50	10260	3792	1465.7	541.7	7329	2709	564	614	560	432.0	343.0	174	170	323	3	27	375	3xM24	38	1062
CSLRG-10006		150	10260	3792	1465.7	541.7	21986	8126	664	814	560	432.0	343.0	174	170	323	3	27	375	3xM24	38	1213
CSLRG-100012		300	10260	3792	1465.7	541.7	43972	16252	814	1114	560	432.0	343.0	174	170	323	3	27	375	3xM24	38	1439
CSLRG-16006	1600 (16024)	155	16024	4891	2289.1	699.3	35495	10845	825	980	710	540.0	450.0	205	170	-	-	-	400	3xM24	30	2179