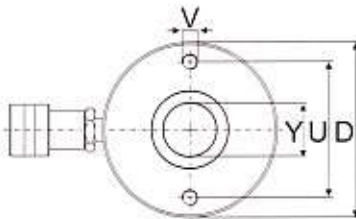
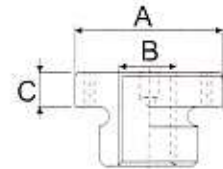


缸底墊塊 Steel baseplate :

- 12ton serial : 8mm
- 20~30ton serial : 10mm
- 60ton serial : 12mm
- 100ton serial : 16mm



缸底墊塊前底座螺孔圖示

This drawing show the base mounting holes of barrel before setting steel base plate.

選配熱處理螺牙中孔墊塊 Optional Heat Treated Hollow Saddles

Cylinder Model/Cap. 型號-能力 (ton)	Model Number 型號	墊塊尺寸 Saddle Dimensions		
		A (mm)	B (in)	C (mm)
RSCH-202,206	XKHCH-20	53	1"-8	9
RSCH-302,306	XKHCH-30	63	1-1/4"-7	9
RSCH-603,606	XKHCH-60	91	1-5/8"-5-1/2-8	12
RSCH-1003	XKHCH-100	126	2-1/2"-8	13

*所有 RSCH 系列千斤頂標準配置平滑中孔墊塊 (12噸系列不配置墊塊)
 ※ Smooth hollow saddles are standard on all RSCH series.
 (12ton models are not equipped with saddles.)

Cyl. Base to Advance Port 底部前進油孔位置 H (mm)	Saddle Diam. 墊塊直徑 J (mm)	Saddle Protr. from Plngr. 凸出高度 K (mm)	Plunger Internal Thread 主軸內牙 O (in)	Plunger Thread Length 內牙深度 P (mm)	Collar Thread 油缸外牙 W (in)	Collar Thread Length 外牙長度 X (mm)	Center Hole Diam. 中孔直徑 Y (mm)	Base Mounting Holes 底座螺孔			Weight 總重 (kg)
								Bolt Circle 底孔孔距 U (mm)	Thread 底座螺紋 V (in)	Thread Depth 螺紋深度 Z (mm)	
9	—	—	3/4"-16UN	16	2 3/4"-16	30	19.6	50.8	5/16"-18UNC	9.0	1.5
19	—	—	—	—	2 3/4"-16	30	19.6	—	—	—	2.8
19	—	—	3/4"-16UN	16	2 3/4"-16	30	19.6	—	—	—	2.8
19	—	—	—	—	2 3/4"-16	30	19.6	50.8	5/16"-18UNC	12.7	4.4
19	54	6.9	1 9/16"-16UN	19	3 7/8"-12	38	26.9	82.6	3/8"-16UNC	9.4	7.7
19	54	6.9	1 9/16"-16UN	19	3 7/8"-12	38	26.9	82.6	3/8"-16UNC	9.4	10.0
19	54	6.9	1 9/16"-16UN	19	3 7/8"-12	38	26.9	82.6	3/8"-16UNC	9.4	14.1
22	63	9.7	1 13/16"-16UN	22	4 1/2"-12	42	33.3	92.2	3/8"-16UNC	14.0	10.9
22	63	9.7	1 13/16"-16UN	22	4 1/2"-12	42	33.3	92.2	3/8"-16UNC	14.0	14.1
25	63	9.7	1 13/16"-16UN	22	4 1/2"-12	42	33.3	92.2	3/8"-16UNC	14.0	21.8
31	91	12.7	2 3/4"-16UN	19	6 1/4"-12	48	53.8	130.3	1/2"-13UNC	14.0	28.1
31	91	12.7	2 3/4"-16UN	19	6 1/4"-12	48	53.8	130.3	1/2"-13UNC	14.0	35.4
38	126	12.7	4"-16UN	25	8 3/8"-12	60	79.0	177.8	5/8"-11UNC	19.0	63.0