

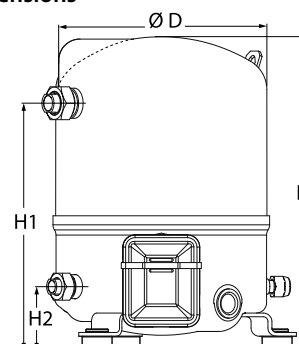
Datasheets

Danfoss Reciprocating compressors **MT / MTZ / NTZ**



General Characteristics

Model number (on compressor nameplate)		MTZ22JC4AVE
Code number for Singlepack*		MTZ22-4VI
Code number for Industrial pack**		MTZ22-4VM
Drawing number		8501024e
Suction and discharge connections		Rotolock
Suction connection		1 " Rotolock
Discharge connection		1 " Rotolock
Suction connection with supplied sleeve		1/2 " ODF
Discharge connection with supplied sleeve		3/8 " ODF
Oil sight glass		Threaded
Oil equalisation connection		3/8" flare SAE
Oil drain connection		None
LP gauge port		Schrader
IPR valve		30 bar / 8 bar
Cylinders	1	
Swept volume	38,12 cm ³ /rev	
Displacement @ Nominal speed	6.6 m ³ /h @ 2900 rpm - 8.0 m ³ /h @ 3500 rpm	
Net weight	21 kg	
Oil charge	0,95 litre, POE - 160PZ	
Maximum system test pressure Low Side / High side	25 bar(g) / 30 bar(g)	
Maximum differential test pressure	30 bar	
Maximum number of starts per hour	12	
Refrigerant charge limit	2,5 kg	
Approved refrigerants	R404A, R507A, R134a, R407C, R407A, R407F	

Dimensions


D=224 mm

H=333 mm

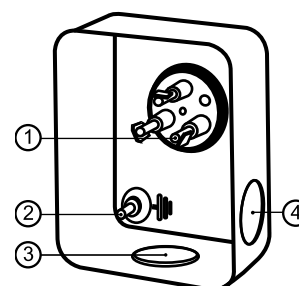
H1=263 mm

H2=68 mm

H3= mm

Electrical Characteristics

Nominal voltage	380-400V/3/50Hz - 460V/3/60Hz
Voltage range	340-440 V @ 50Hz - 414-506 V @ 60Hz
Winding resistance (between phases) +/- 7% at 25°C	9.17 Ω
Maximum Continuous Current (MCC)	6 A
Locked Rotor Amps (LRA)	16 A
Motor protection	Internal overload protector

Terminal box


IP55 (with cable gland)

1: Spade connectors 1/4"

2: Earth M4-12

3: Knock-out Ø 21 mm (0.83")

4: Hole Ø 21 mm (0.83")

Recommended Installation torques

Oil sight glass	50 Nm
Power connections / Earth connection	Nm / 2 Nm
Mounting bolts	15 Nm

Parts shipped with compressor

Mounting kit with grommets, bolts, nuts, sleeves and washers
Suction & Discharge solder sleeves, rotolock nuts and gaskets (shipped with rotolock version only)
Initial oil charge
Installation instructions

Approvals : CE certified, UL certified (file SA6873), CCC certified

*Singlepack: Compressor in cardboard box

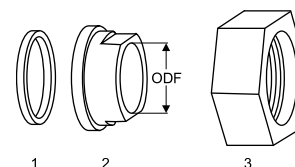
**Industrial pack: 12 Unboxed compressors on pallet (order per multiples of 12)

Rotolock accessories, suction side

Code no.

Solder sleeve, P06 (1" Rotolock, 1/2" ODF)	8153007
Angle adapter, C06 (1" Rotolock, 1/2" ODF)	8168007
Rotolock valve, V06 (1" Rotolock, 1/2" ODF)	8168031
Gasket, 1"	8156130

Gaskets, sleeves and nuts



Rotolock accessories, discharge side

Code no.

Solder sleeve, P01 (1" Rotolock, 3/8" ODF)	8153010
Angle adapter, C01 (1" Rotolock, 3/8" ODF)	8168004
Rotolock valve, V01 (1" Rotolock, 3/8" ODF)	8168027
Gasket, 1"	8156130

Rotolock accessories, sets

Code no.

Angle adapter set, C06 (1"~1/2"), C01 (1"~3/8")	7703011
Valve set, V06 (1"~1/2"), V01 (1"~3/8")	7703004
Gasket set, 1", 1-1/4", 1-3/4", OSG gaskets black & white	8156009

- 1: Gasket
2: Solder sleeve
3: Rotolock nut

Oil / lubricants

Code no.

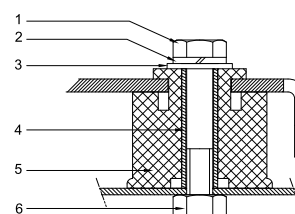
POE lubricant, 160PZ, 1 litre can	7754019
POE lubricant, 160PZ, 2.5 litre can	120Z0573

Crankcase heaters

Code no.

PTC heater 27W, CE mark, UL	120Z0459
Belt type crankcase heater, 54 W, 230 V, CE mark, UL	7773106
Belt type crankcase heater, 54 W, 400 V, UL	7773013

Mounting kit



Miscellaneous accessories

Code no.

Electronic soft start kit, MCI 15 C	7705006
Acoustic hood for 1 cylinder compressor	120Z0471
Oil equalisation nut	8153127

Spare parts

Code no.

Mounting kit for 1 and 2 cylinder compressor, including 3 grommets, 3 bolts	8156001
Oil sight glass with gaskets (black & white)	8156019
Gasket for oil sight glass (black chloroprene)	8156145
Service kit for terminal box 80 x 96 mm, including 1 cover, 1 clamp	8156134

- 1: Bolt (3x)
2: Lock washer (3x)
3: Flat washer (3x)
4: Sleeve (3x)
5: Grommet (3x)
6: Nut (3x)

Datasheet, performance data

Maneurop reciprocating compressor. MTZ022-4

Performance data at 50 Hz, EN 12900 rating conditions

R407C

Cond. temp. in °C (tc)	Evaporating temperature in °C (to)							
	-15	-10	-5	0	5	10	15	

Cooling capacity in W

35	2 090	2 840	3 729	4 774	5 992	7 400	9 013	-	-
40	1 853	2 559	3 393	4 372	5 512	6 830	8 343	-	-
45	1 619	2 280	3 058	3 969	5 030	6 258	7 669	-	-
50	-	2 006	2 727	3 569	4 550	5 687	6 995	-	-
55	-	-	2 401	3 175	4 075	5 119	6 324	-	-
60	-	-	-	2 788	3 607	4 558	5 658	-	-
65	-	-	-	2 412	3 148	4 005	5 000	-	-

Power input in W

35	1 045	1 159	1 249	1 319	1 370	1 405	1 429	-	-
40	1 067	1 208	1 323	1 414	1 484	1 537	1 576	-	-
45	1 071	1 243	1 386	1 503	1 597	1 671	1 729	-	-
50	-	1 262	1 437	1 584	1 706	1 806	1 888	-	-
55	-	-	1 476	1 657	1 811	1 941	2 049	-	-
60	-	-	-	1 719	1 909	2 073	2 212	-	-
65	-	-	-	1 770	2 000	2 201	2 376	-	-

Current consumption in A

35	2.55	2.66	2.74	2.81	2.88	2.94	3.00	-	-
40	2.58	2.71	2.82	2.91	2.99	3.07	3.14	-	-
45	2.59	2.76	2.90	3.02	3.13	3.22	3.31	-	-
50	-	2.78	2.97	3.13	3.27	3.40	3.51	-	-
55	-	-	3.01	3.23	3.41	3.58	3.73	-	-
60	-	-	-	3.30	3.55	3.76	3.96	-	-
65	-	-	-	3.36	3.66	3.94	4.20	-	-

Mass flow in kg/h

35	45	61	78	99	122	148	179	-	-
40	42	57	75	95	118	144	173	-	-
45	39	54	71	91	113	138	167	-	-
50	-	50	67	86	108	133	161	-	-
55	-	-	63	82	103	127	154	-	-
60	-	-	-	77	97	121	147	-	-
65	-	-	-	72	92	114	140	-	-

Coefficient of performance (C.O.P.)

35	2.00	2.45	2.98	3.62	4.38	5.27	6.31	-	-
40	1.74	2.12	2.57	3.09	3.71	4.44	5.29	-	-
45	1.51	1.83	2.21	2.64	3.15	3.74	4.43	-	-
50	-	1.59	1.90	2.25	2.67	3.15	3.71	-	-
55	-	-	1.63	1.92	2.25	2.64	3.09	-	-
60	-	-	-	1.62	1.89	2.20	2.56	-	-
65	-	-	-	1.36	1.57	1.82	2.10	-	-

Nominal performance at to = 5 °C, tc = 50 °C

Cooling capacity	4 550	W
Power input	1 706	W
Current consumption	3.27	A
Mass flow	108	kg/h
C.O.P.	2.67	

to: Evaporating temperature at dew point

tc: Condensing temperature at dew point

Rating conditions : Superheat = 10 K , Subcooling = 0 K

Pressure switch settings

Maximum HP switch setting	29.4	bar(g)
Minimum LP switch setting	0.2	bar(g)
LP pump down setting	1.3	bar(g)

Sound power data

Sound power level	73	dB(A)
With acoustic hood	67	dB(A)

All performance data +/- 5%

Performance data at 50 Hz, ARI rating conditions
R407C

Cond. temp. in °C (tc)	Evaporating temperature in °C (to)							
	-15	-10	-5	0	5	10	15	

Cooling capacity in W

35	2 249	3 053	4 004	5 120	6 420	7 919	9 637	-	-
40	2 005	2 766	3 662	4 713	5 934	7 345	8 962	-	-
45	1 763	2 480	3 321	4 304	5 447	6 768	8 283	-	-
50	-	2 197	2 982	3 897	4 961	6 191	7 604	-	-
55	-	-	2 649	3 495	4 478	5 617	6 928	-	-
60	-	-	-	3 101	4 003	5 049	6 257	-	-
65	-	-	-	2 718	3 539	4 492	5 596	-	-

Power input in W

35	1 045	1 159	1 249	1 319	1 370	1 405	1 429	-	-
40	1 067	1 208	1 323	1 414	1 484	1 537	1 576	-	-
45	1 071	1 243	1 386	1 503	1 597	1 671	1 729	-	-
50	-	1 262	1 437	1 584	1 706	1 806	1 888	-	-
55	-	-	1 476	1 657	1 811	1 941	2 049	-	-
60	-	-	-	1 719	1 909	2 073	2 212	-	-
65	-	-	-	1 770	2 000	2 201	2 376	-	-

Current consumption in A

35	2.55	2.66	2.74	2.81	2.88	2.94	3.00	-	-
40	2.58	2.71	2.82	2.91	2.99	3.07	3.14	-	-
45	2.59	2.76	2.90	3.02	3.13	3.22	3.31	-	-
50	-	2.78	2.97	3.13	3.27	3.40	3.51	-	-
55	-	-	3.01	3.23	3.41	3.58	3.73	-	-
60	-	-	-	3.30	3.55	3.76	3.96	-	-
65	-	-	-	3.36	3.66	3.94	4.20	-	-

Mass flow in kg/h

35	45	60	78	98	121	148	177	-	-
40	42	57	74	94	117	143	172	-	-
45	39	54	71	90	112	138	166	-	-
50	-	50	67	86	107	132	160	-	-
55	-	-	63	81	102	126	153	-	-
60	-	-	-	76	97	120	146	-	-
65	-	-	-	71	91	114	139	-	-

Coefficient of performance (C.O.P.)

35	2.15	2.63	3.20	3.88	4.69	5.64	6.74	-	-
40	1.88	2.29	2.77	3.33	4.00	4.78	5.69	-	-
45	1.65	2.00	2.40	2.86	3.41	4.05	4.79	-	-
50	-	1.74	2.07	2.46	2.91	3.43	4.03	-	-
55	-	-	1.79	2.11	2.47	2.89	3.38	-	-
60	-	-	-	1.80	2.10	2.44	2.83	-	-
65	-	-	-	1.54	1.77	2.04	2.36	-	-

Nominal performance at to = 7.2 °C, tc = 54.4 °C

Cooling capacity	5 021	W
Power input	1 857	W
Current consumption	3.47	A
Mass flow	113	kg/h
C.O.P.	2.70	

to: Evaporating temperature at dew point

tc: Condensing temperature at dew point

Rating conditions : Superheat = 11.1 K , Subcooling = 8.3 K

Pressure switch settings

Maximum HP switch setting	29.4	bar(g)
Minimum LP switch setting	0.2	bar(g)
LP pump down setting	1.3	bar(g)

Sound power data

Sound power level	73	dB(A)
With acoustic hood	67	dB(A)

All performance data +/- 5%

Performance data at 50 Hz, EN 12900 rating conditions
R134a

Cond. temp. in °C (tc)	Evaporating temperature in °C (to)							
	-15	-10	-5	0	5	10	15	20

Cooling capacity in W

35	1 223	1 721	2 332	3 072	3 955	4 996	6 210	7 612	-
40	1 075	1 542	2 115	2 809	3 639	4 620	5 767	7 094	-
45	940	1 372	1 903	2 548	3 320	4 237	5 311	6 558	-
50	822	1 215	1 699	2 290	3 001	3 848	4 845	6 008	-
55	724	1 073	1 506	2 038	2 683	3 457	4 373	5 447	-
60	-	948	1 327	1 796	2 371	3 067	3 898	4 878	-
65	-	-	-	1 566	2 067	2 681	3 422	4 305	-
70	-	-	-	-	-	2 302	2 949	3 730	-

Power input in W

35	682	763	836	896	940	965	966	941	-
40	704	792	874	944	1 001	1 039	1 056	1 048	-
45	718	815	906	989	1 058	1 112	1 146	1 157	-
50	725	831	933	1 029	1 113	1 183	1 235	1 265	-
55	724	840	955	1 064	1 164	1 251	1 322	1 373	-
60	-	842	969	1 094	1 210	1 316	1 407	1 480	-
65	-	-	-	1 118	1 252	1 378	1 490	1 586	-
70	-	-	-	-	-	1 435	1 570	1 691	-

Current consumption in A

35	2.07	2.12	2.17	2.22	2.26	2.30	2.33	2.35	-
40	2.08	2.14	2.20	2.26	2.32	2.37	2.41	2.45	-
45	2.09	2.16	2.23	2.30	2.37	2.43	2.49	2.55	-
50	2.10	2.18	2.26	2.34	2.42	2.50	2.58	2.65	-
55	2.10	2.19	2.28	2.38	2.47	2.57	2.67	2.76	-
60	-	2.19	2.30	2.41	2.52	2.64	2.76	2.87	-
65	-	-	-	2.44	2.57	2.71	2.84	2.98	-
70	-	-	-	-	-	2.78	2.94	3.10	-

Mass flow in kg/h

35	30	41	54	70	88	109	133	161	-
40	27	38	52	67	85	106	130	157	-
45	25	36	49	64	82	102	125	152	-
50	23	34	46	61	78	98	120	146	-
55	22	32	44	57	74	93	115	140	-
60	-	30	41	54	70	88	109	133	-
65	-	-	-	51	66	83	103	126	-
70	-	-	-	-	-	77	96	118	-

Coefficient of performance (C.O.P.)

35	1.79	2.25	2.79	3.43	4.21	5.18	6.43	8.09	-
40	1.53	1.95	2.42	2.98	3.64	4.45	5.46	6.77	-
45	1.31	1.68	2.10	2.58	3.14	3.81	4.63	5.67	-
50	1.13	1.46	1.82	2.23	2.70	3.25	3.92	4.75	-
55	1.00	1.28	1.58	1.92	2.31	2.76	3.31	3.97	-
60	-	1.13	1.37	1.64	1.96	2.33	2.77	3.30	-
65	-	-	-	1.40	1.65	1.95	2.30	2.71	-
70	-	-	-	-	-	1.60	1.88	2.21	-

Nominal performance at to = 5 °C, tc = 50 °C

Cooling capacity	3 001	W
Power input	1 113	W
Current consumption	2.42	A
Mass flow	78	kg/h
C.O.P.	2.70	

Pressure switch settings

Maximum HP switch setting	22.6	bar(g)
Minimum LP switch setting	0.2	bar(g)
LP pump down setting	0.5	bar(g)

Sound power data

Sound power level	0	dB(A)
With acoustic hood	0	dB(A)

to: Evaporating temperature at dew point

tc: Condensing temperature at dew point

Rating conditions : Superheat = 10 K , Subcooling = 0 K

All performance data +/- 5%

Danfoss can accept no responsibility for possible errors in catalogues, brochures and other printed material. Danfoss reserves the right to alter its products without notice. This also applies to products already on order provided that such alterations can be made without subsequent changes being necessary in specifications already agreed. All trademarks in this material are property of the respective companies. Danfoss, the Danfoss logotype and Maneurop are trademarks of Danfoss A/S. All rights reserved.

Performance data at 50 Hz, ARI rating conditions
R134a

Cond. temp. in °C (tc)	Evaporating temperature in °C (to)							
	-15	-10	-5	0	5	10	15	20

Cooling capacity in W

35	1 325	1 861	2 518	3 311	4 256	5 369	6 665	8 159	-
40	1 170	1 676	2 295	3 043	3 935	4 988	6 216	7 636	-
45	1 030	1 500	2 077	2 775	3 610	4 597	5 753	7 093	-
50	907	1 338	1 866	2 509	3 282	4 200	5 279	6 534	-
55	805	1 191	1 667	2 250	2 956	3 800	4 797	5 962	-
60	-	1 063	1 482	2 001	2 634	3 399	4 309	5 381	-
65	-	-	-	1 763	2 320	3 000	3 819	4 792	-
70	-	-	-	-	-	2 608	3 330	4 199	-

Power input in W

35	682	763	836	896	940	965	966	941	-
40	704	792	874	944	1 001	1 039	1 056	1 048	-
45	718	815	906	989	1 058	1 112	1 146	1 157	-
50	725	831	933	1 029	1 113	1 183	1 235	1 265	-
55	724	840	955	1 064	1 164	1 251	1 322	1 373	-
60	-	842	969	1 094	1 210	1 316	1 407	1 480	-
65	-	-	-	1 118	1 252	1 378	1 490	1 586	-
70	-	-	-	-	-	1 435	1 570	1 691	-

Current consumption in A

35	2.07	2.12	2.17	2.22	2.26	2.30	2.33	2.35	-
40	2.08	2.14	2.20	2.26	2.32	2.37	2.41	2.45	-
45	2.09	2.16	2.23	2.30	2.37	2.43	2.49	2.55	-
50	2.10	2.18	2.26	2.34	2.42	2.50	2.58	2.65	-
55	2.10	2.19	2.28	2.38	2.47	2.57	2.67	2.76	-
60	-	2.19	2.30	2.41	2.52	2.64	2.76	2.87	-
65	-	-	-	2.44	2.57	2.71	2.84	2.98	-
70	-	-	-	-	-	2.78	2.94	3.10	-

Mass flow in kg/h

35	30	41	54	69	88	109	133	160	-
40	27	38	51	67	85	105	129	156	-
45	25	36	49	64	81	101	125	151	-
50	23	34	46	60	77	97	120	145	-
55	22	32	43	57	73	92	114	139	-
60	-	30	41	54	69	87	108	132	-
65	-	-	-	51	65	82	102	125	-
70	-	-	-	-	-	77	96	117	-

Coefficient of performance (C.O.P.)

35	1.94	2.44	3.01	3.69	4.53	5.56	6.90	8.67	-
40	1.66	2.12	2.63	3.22	3.93	4.80	5.88	7.28	-
45	1.43	1.84	2.29	2.81	3.41	4.13	5.02	6.13	-
50	1.25	1.61	2.00	2.44	2.95	3.55	4.28	5.17	-
55	1.11	1.42	1.75	2.12	2.54	3.04	3.63	4.34	-
60	-	1.26	1.53	1.83	2.18	2.58	3.06	3.63	-
65	-	-	-	1.58	1.85	2.18	2.56	3.02	-
70	-	-	-	-	-	1.82	2.12	2.48	-

Nominal performance at to = 7.2 °C, tc = 54.4 °C

Cooling capacity	3 352	W
Power input	1 197	W
Current consumption	2.51	A
Mass flow	82	kg/h
C.O.P.	2.80	

Pressure switch settings

Maximum HP switch setting	22.6	bar(g)
Minimum LP switch setting	0.2	bar(g)
LP pump down setting	0.5	bar(g)

Sound power data

Sound power level	0	dB(A)
With acoustic hood	0	dB(A)

to: Evaporating temperature at dew point

tc: Condensing temperature at dew point

Rating conditions : Superheat = 11.1 K , Subcooling = 8.3 K

All performance data +/- 5%

Danfoss can accept no responsibility for possible errors in catalogues, brochures and other printed material. Danfoss reserves the right to alter its products without notice. This also applies to products already on order provided that such alterations can be made without subsequential changes being necessary in specifications already agreed. All trademarks in this material are property of the respective companies. Danfoss, the Danfoss logotype and Maneurop are trademarks of Danfoss A/S. All rights reserved.

Datasheet, performance data

Maneurop reciprocating compressor. MTZ022-4

Performance data at 50 Hz, EN 12900 rating conditions

R404A

Cond. temp. in °C (tc)	Evaporating temperature in °C (to)								
	-30	-25	-20	-15	-10	-5	0	5	10

Cooling capacity in W

30	1 070	1 535	2 125	2 856	3 744	4 804	6 052	7 504	9 176
35	918	1 342	1 882	2 552	3 368	4 347	5 504	6 854	8 413
40	774	1 156	1 643	2 251	2 995	3 891	4 954	6 201	7 647
45	639	978	1 411	1 955	2 625	3 436	4 405	5 547	6 878
50	515	809	1 187	1 665	2 259	2 985	3 857	4 892	6 106
55	-	650	971	1 382	1 899	2 537	3 311	4 239	5 334
60	-	503	765	1 108	1 545	2 094	2 769	3 587	4 563

Power input in W

30	893	1 017	1 128	1 224	1 305	1 369	1 414	1 440	1 443
35	890	1 029	1 156	1 270	1 370	1 454	1 521	1 570	1 599
40	879	1 032	1 176	1 309	1 428	1 534	1 624	1 697	1 752
45	859	1 029	1 190	1 342	1 482	1 610	1 724	1 822	1 904
50	832	1 019	1 198	1 370	1 532	1 683	1 821	1 945	2 054
55	-	1 002	1 201	1 393	1 577	1 752	1 916	2 067	2 204
60	-	980	1 199	1 413	1 620	1 819	2 009	2 188	2 354

Current consumption in A

30	2.41	2.53	2.65	2.76	2.86	2.94	3.00	3.04	3.04
35	2.42	2.55	2.68	2.80	2.92	3.02	3.10	3.15	3.18
40	2.43	2.57	2.71	2.85	2.99	3.11	3.21	3.30	3.36
45	2.41	2.57	2.74	2.90	3.06	3.21	3.35	3.47	3.56
50	2.38	2.56	2.75	2.94	3.13	3.32	3.49	3.65	3.78
55	-	2.52	2.74	2.97	3.20	3.42	3.64	3.84	4.02
60	-	2.45	2.71	2.98	3.25	3.52	3.78	4.03	4.26

Mass flow in kg/h

30	34	47	64	84	107	134	165	200	241
35	31	44	60	80	102	129	160	195	235
40	28	41	57	76	98	124	154	189	228
45	26	38	53	71	93	118	148	182	220
50	23	35	49	67	88	112	141	174	212
55	-	32	45	62	82	106	134	167	204
60	-	28	41	57	76	100	127	158	194

Coefficient of performance (C.O.P.)

30	1.20	1.51	1.88	2.33	2.87	3.51	4.28	5.21	6.36
35	1.03	1.30	1.63	2.01	2.46	2.99	3.62	4.37	5.26
40	0.88	1.12	1.40	1.72	2.10	2.54	3.05	3.65	4.36
45	0.74	0.95	1.19	1.46	1.77	2.13	2.56	3.04	3.61
50	0.62	0.79	0.99	1.22	1.47	1.77	2.12	2.52	2.97
55	-	0.65	0.81	0.99	1.20	1.45	1.73	2.05	2.42
60	-	0.51	0.64	0.78	0.95	1.15	1.38	1.64	1.94

Nominal performance at to = -10 °C, tc = 45 °C

Cooling capacity	2 625	W
Power input	1 482	W
Current consumption	3.06	A
Mass flow	93	kg/h
C.O.P.	1.77	



to: Evaporating temperature at dew point

tc: Condensing temperature at dew point

Rating conditions : Superheat = 10 K , Subcooling = 0 K

Pressure switch settings

Maximum HP switch setting	27.7	bar(g)
Minimum LP switch setting	0.2	bar(g)
LP pump down setting	0.9	bar(g)

Sound power data

Sound power level	74	dB(A)
With acoustic hood	68	dB(A)

All performance data +/- 5%

Performance data at 50 Hz, ARI rating conditions
R404A

Cond. temp. in °C (tc)	Evaporating temperature in °C (to)								
	-30	-25	-20	-15	-10	-5	0	5	10

Cooling capacity in W

30	1 191	1 704	2 353	3 155	4 126	5 283	6 642	8 219	10 031
35	1 033	1 505	2 104	2 845	3 746	4 822	6 091	7 568	9 270
40	882	1 313	1 860	2 539	3 368	4 362	5 539	6 915	8 506
45	741	1 128	1 621	2 237	2 992	3 903	4 987	6 261	7 741
50	610	953	1 391	1 941	2 621	3 448	4 438	5 609	6 977
55	-	788	1 169	1 653	2 257	2 999	3 895	4 963	6 219
60	-	635	958	1 375	1 903	2 560	3 363	4 330	5 477

Power input in W

30	893	1 017	1 128	1 224	1 305	1 369	1 414	1 440	1 443
35	890	1 029	1 156	1 270	1 370	1 454	1 521	1 570	1 599
40	879	1 032	1 176	1 309	1 428	1 534	1 624	1 697	1 752
45	859	1 029	1 190	1 342	1 482	1 610	1 724	1 822	1 904
50	832	1 019	1 198	1 370	1 532	1 683	1 821	1 945	2 054
55	-	1 002	1 201	1 393	1 577	1 752	1 916	2 067	2 204
60	-	980	1 199	1 413	1 620	1 819	2 009	2 188	2 354

Current consumption in A

30	2.41	2.53	2.65	2.76	2.86	2.94	3.00	3.04	3.04
35	2.42	2.55	2.68	2.80	2.92	3.02	3.10	3.15	3.18
40	2.43	2.57	2.71	2.85	2.99	3.11	3.21	3.30	3.36
45	2.41	2.57	2.74	2.90	3.06	3.21	3.35	3.47	3.56
50	2.38	2.56	2.75	2.94	3.13	3.32	3.49	3.65	3.78
55	-	2.52	2.74	2.97	3.20	3.42	3.64	3.84	4.02
60	-	2.45	2.71	2.98	3.25	3.52	3.78	4.03	4.26

Mass flow in kg/h

30	33	47	63	83	106	133	164	199	239
35	31	44	60	79	102	128	159	193	233
40	28	41	57	75	97	123	153	187	226
45	26	38	53	71	92	118	147	181	219
50	23	35	49	66	87	112	140	173	211
55	-	31	45	62	82	106	133	165	202
60	-	28	41	57	76	99	126	157	193

Coefficient of performance (C.O.P.)

30	1.33	1.68	2.09	2.58	3.16	3.86	4.70	5.71	6.95
35	1.16	1.46	1.82	2.24	2.74	3.32	4.00	4.82	5.80
40	1.00	1.27	1.58	1.94	2.36	2.84	3.41	4.07	4.85
45	0.86	1.10	1.36	1.67	2.02	2.42	2.89	3.44	4.07
50	0.73	0.94	1.16	1.42	1.71	2.05	2.44	2.88	3.40
55	-	0.79	0.97	1.19	1.43	1.71	2.03	2.40	2.82
60	-	0.65	0.80	0.97	1.17	1.41	1.67	1.98	2.33

Nominal performance at to = -10 °C, tc = 45 °C

Cooling capacity	2 992	W
Power input	1 482	W
Current consumption	3.06	A
Mass flow	92	kg/h
C.O.P.	2.02	

to: Evaporating temperature at dew point

tc: Condensing temperature at dew point

Rating conditions : Superheat = 11.1 K , Subcooling = 8.3 K

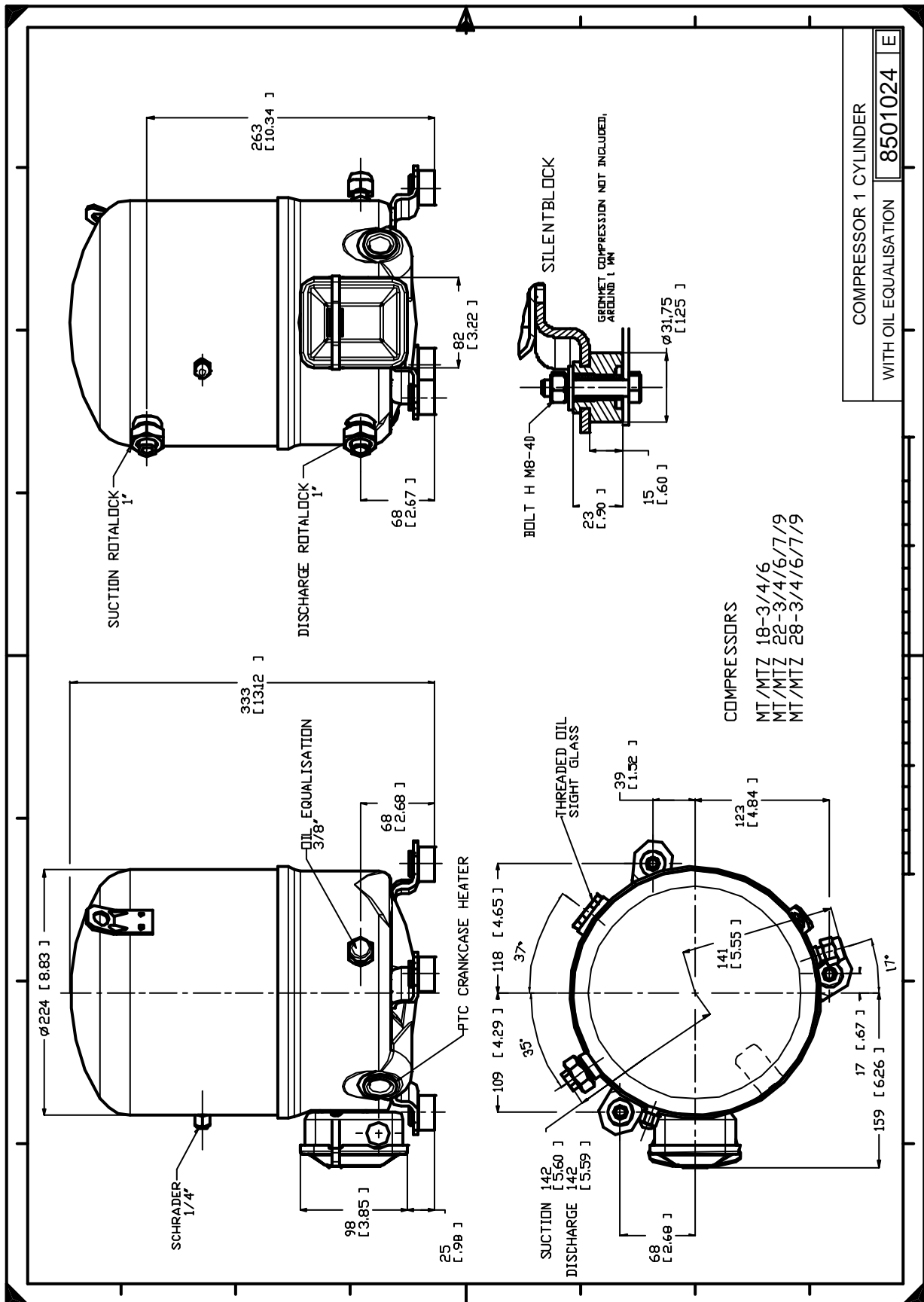
Pressure switch settings

Maximum HP switch setting	27.7	bar(g)
Minimum LP switch setting	0.2	bar(g)
LP pump down setting	0.9	bar(g)

Sound power data

Sound power level	74	dB(A)
With acoustic hood	68	dB(A)

All performance data +/- 5%



COMPRESSOR 1 CYLINDER
WITH OIL EQUALISATION **8501024** E