

Datasheets

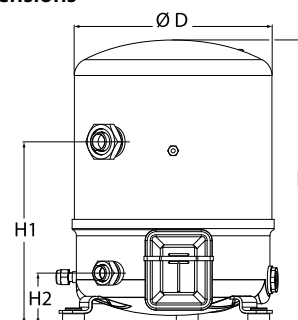
# Danfoss Reciprocating compressors **MT / MTZ / NTZ**



### General Characteristics

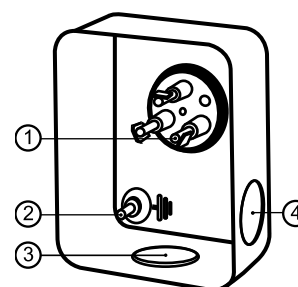
Model number (on compressor nameplate)		<b>MTZ50HK4CVE</b>
Code number for Singlepack*		MTZ50-4VI
Code number for Industrial pack**		MTZ50-4VM
Drawing number		8502012g
Suction and discharge connections		Rotolock
Suction connection		1-3/4" Rotolock
Discharge connection		1-1/4" Rotolock
Suction connection with supplied sleeve		7/8" ODF
Discharge connection with supplied sleeve		3/4" ODF
Oil sight glass		Threaded
Oil equalisation connection		3/8" flare SAE
Oil drain connection		None
LP gauge port		Schrader
IPR valve		30 bar / 8 bar
Cylinders	2	
Swept volume	85,64 cm <sup>3</sup> /rev	
Displacement @ Nominal speed	14.9 m <sup>3</sup> /h @ 2900 rpm - 18.0 m <sup>3</sup> /h @ 3500 rpm	
Net weight	37 kg	
Oil charge	1,8 litre, POE - 160PZ	
Maximum system test pressure Low Side / High side	25 bar(g) / 30 bar(g)	
Maximum differential test pressure	30 bar	
Maximum number of starts per hour	12	
Refrigerant charge limit	5 kg	
Approved refrigerants	R404A, R507A, R134a, R407C, R407A, R407F	

### Dimensions



D=288 mm  
H=413 mm  
H1=265 mm  
H2=74 mm  
H3=- mm

### Terminal box



IP55 (with cable gland)

- 1: Spade connectors 1/4"
- 2: Earth M4-12
- 3: Knock-out Ø 21 mm (0.83")
- 4: Hole Ø 21 mm (0.83")

### Electrical Characteristics

Nominal voltage	380-400V/3/50Hz - 460V/3/60Hz
Voltage range	340-440 V @ 50Hz - 414-506 V @ 60Hz
Winding resistance (between phases) +/- 7% at 25°C	3.35 Ω
Maximum Continuous Current (MCC)	12 A
Locked Rotor Amps (LRA)	48.5 A
Motor protection	Internal overload protector

### Recommended Installation torques

Oil sight glass	50 Nm
Power connections / Earth connection	Nm / 2 Nm
Mounting bolts	15 Nm

### Parts shipped with compressor

Mounting kit with grommets, bolts, nuts, sleeves and washers
Suction & Discharge solder sleeves, rotolock nuts and gaskets (shipped with rotolock version only)
Initial oil charge
Installation instructions

**Approvals** : CE certified, UL certified (file SA6873), CCC certified

\*Singlepack: Compressor in cardboard box

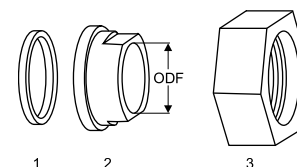
\*\*Industrial pack: 6 Unboxed compressors on pallet (order per multiples of 6)

**Rotolock accessories, suction side**

**Code no.**

Solder sleeve, P07 (1-3/4" Rotolock, 7/8" ODF)	8153013
Angle adapter, C07 (1-3/4" Rotolock, 7/8" ODF)	8168008
Rotolock valve, V07 (1-3/4" Rotolock, 7/8" ODF)	8168032
Gasket, 1-3/4"	8156132

**Gaskets, sleeves and nuts**



- 1: Gasket  
2: Solder sleeve  
3: Rotolock nut

**Rotolock accessories, discharge side**

**Code no.**

Solder sleeve, P04 (1-1/4" Rotolock, 3/4" ODF)	8153008
Angle adapter, C04 (1-1/4" Rotolock, 3/4" ODF)	8168006
Rotolock valve, V04 (1-1/4" Rotolock, 3/4" ODF)	8168029
Gasket, 1-1/4"	8156131

**Rotolock accessories, sets**

**Code no.**

Angle adapter set, C07 (1-3/4"~7/8"), C04 (1-1/4"~3/4")	7703013
Valve set, V07 (1-3/4"~7/8"), V04 (1-1/4"~3/4")	7703006
Gasket set, 1", 1-1/4", 1-3/4", OSG gaskets black & white	8156009

**Oil / lubricants**

**Code no.**

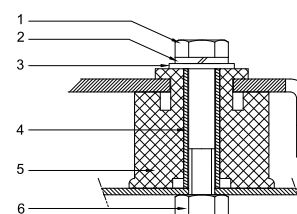
POE lubricant, 160PZ, 1 litre can	7754019
POE lubricant, 160PZ, 2.5 litre can	120Z0573

**Crankcase heaters**

**Code no.**

PTC heater 27W, CE mark, UL	120Z0459
Belt type crankcase heater, 65 W, 230 V, CE mark, UL	7773107
Belt type crankcase heater, 65 W, 400 V, CE mark, UL	7773117
Belt type crankcase heater, 65 W, 460 V, CE mark, UL	120Z0466

**Mounting kit**



- 1: Bolt (3x)  
2: Lock washer (3x)  
3: Flat washer (3x)  
4: Sleeve (3x)  
5: Grommet (3x)  
6: Nut (3x)

**Miscellaneous accessories**

**Code no.**

Electronic soft start kit, MCI 15 C	7705006
Acoustic hood for 2 cylinder compressor	120Z0472
Oil equalisation nut	8153127

**Spare parts**

**Code no.**

Mounting kit for 1 and 2 cylinder compressor, including 3 grommets, 3 bolts	8156001
Oil sight glass with gaskets (black & white)	8156019
Gasket for oil sight glass (black chloroprene)	8156145
Service kit for terminal box 80 x 96 mm, including 1 cover, 1 clamp	8156134

# Datasheet, performance data

# Maneurop reciprocating compressor. MTZ050-4

## Performance data at 50 Hz, EN 12900 rating conditions

## R407C

Cond. temp. in °C (tc)	Evaporating temperature in °C (to)							
	-15	-10	-5	0	5	10	15	

### Cooling capacity in W

35	4 843	6 491	8 474	10 833	13 612	16 855	20 605	-	-
40	4 348	5 896	7 749	9 951	12 545	15 573	19 079	-	-
45	3 848	5 298	7 025	9 071	11 480	14 296	17 561	-	-
50	-	4 699	6 300	8 193	10 420	13 025	16 051	-	-
55	-	-	5 577	7 318	9 365	11 761	14 550	-	-
60	-	-	-	6 448	8 316	10 505	13 058	-	-
65	-	-	-	5 583	7 275	9 259	11 578	-	-

### Power input in W

35	2 241	2 484	2 684	2 849	2 985	3 098	3 194	-	-
40	2 307	2 601	2 844	3 045	3 208	3 342	3 451	-	-
45	2 344	2 699	2 997	3 244	3 447	3 612	3 746	-	-
50	-	2 765	3 128	3 433	3 687	3 895	4 065	-	-
55	-	-	3 225	3 599	3 915	4 178	4 394	-	-
60	-	-	-	3 728	4 116	4 445	4 720	-	-
65	-	-	-	3 804	4 278	4 684	5 029	-	-

### Current consumption in A

35	4.71	4.98	5.23	5.46	5.67	5.87	6.05	-	-
40	4.78	5.11	5.41	5.67	5.91	6.12	6.30	-	-
45	4.84	5.24	5.60	5.91	6.19	6.44	6.64	-	-
50	-	5.33	5.77	6.16	6.51	6.80	7.05	-	-
55	-	-	5.91	6.40	6.82	7.19	7.50	-	-
60	-	-	-	6.58	7.11	7.57	7.96	-	-
65	-	-	-	6.70	7.35	7.92	8.41	-	-

### Mass flow in kg/h

35	105	139	178	224	277	338	408	-	-
40	99	132	171	216	268	327	396	-	-
45	93	125	163	207	258	316	383	-	-
50	-	118	155	198	247	304	369	-	-
55	-	-	146	188	236	292	355	-	-
60	-	-	-	177	224	278	340	-	-
65	-	-	-	166	212	264	324	-	-

### Coefficient of performance (C.O.P.)

35	2.16	2.61	3.16	3.80	4.56	5.44	6.45	-	-
40	1.88	2.27	2.72	3.27	3.91	4.66	5.53	-	-
45	1.64	1.96	2.34	2.80	3.33	3.96	4.69	-	-
50	-	1.70	2.01	2.39	2.83	3.34	3.95	-	-
55	-	-	1.73	2.03	2.39	2.82	3.31	-	-
60	-	-	-	1.73	2.02	2.36	2.77	-	-
65	-	-	-	1.47	1.70	1.98	2.30	-	-

### Nominal performance at to = 5 °C, tc = 50 °C

Cooling capacity	10 420	W
Power input	3 687	W
Current consumption	6.51	A
Mass flow	247	kg/h
C.O.P.	2.83	



to: Evaporating temperature at dew point

tc: Condensing temperature at dew point

Rating conditions : Superheat = 10 K , Subcooling = 0 K

### Pressure switch settings

Maximum HP switch setting	29.4	bar(g)
Minimum LP switch setting	0.2	bar(g)
LP pump down setting	1.3	bar(g)

### Sound power data

Sound power level	84	dB(A)
With acoustic hood	77	dB(A)

All performance data +/- 5%

# Datasheet, performance data

# Maneurop reciprocating compressor. MTZ050-4

## Performance data at 50 Hz, ARI rating conditions

## R407C

Cond. temp. in °C (tc)	Evaporating temperature in °C (to)							
	-15	-10	-5	0	5	10	15	

### Cooling capacity in W

35	5 213	6 979	9 099	11 619	14 584	18 040	22 030	-	-
40	4 705	6 372	8 364	10 727	13 506	16 747	20 496	-	-
45	4 192	5 762	7 628	9 835	12 431	15 460	18 968	-	-
50	-	5 147	6 890	8 945	11 359	14 178	17 448	-	-
55	-	-	6 152	8 057	10 292	12 904	15 938	-	-
60	-	-	-	7 172	9 231	11 638	14 440	-	-
65	-	-	-	6 291	8 178	10 384	12 958	-	-

### Power input in W

35	2 241	2 484	2 684	2 849	2 985	3 098	3 194	-	-
40	2 307	2 601	2 844	3 045	3 208	3 342	3 451	-	-
45	2 344	2 699	2 997	3 244	3 447	3 612	3 746	-	-
50	-	2 765	3 128	3 433	3 687	3 895	4 065	-	-
55	-	-	3 225	3 599	3 915	4 178	4 394	-	-
60	-	-	-	3 728	4 116	4 445	4 720	-	-
65	-	-	-	3 804	4 278	4 684	5 029	-	-

### Current consumption in A

35	4.71	4.98	5.23	5.46	5.67	5.87	6.05	-	-
40	4.78	5.11	5.41	5.67	5.91	6.12	6.30	-	-
45	4.84	5.24	5.60	5.91	6.19	6.44	6.64	-	-
50	-	5.33	5.77	6.16	6.51	6.80	7.05	-	-
55	-	-	5.91	6.40	6.82	7.19	7.50	-	-
60	-	-	-	6.58	7.11	7.57	7.96	-	-
65	-	-	-	6.70	7.35	7.92	8.41	-	-

### Mass flow in kg/h

35	105	138	177	223	275	336	406	-	-
40	99	131	170	214	266	325	393	-	-
45	92	125	162	206	256	314	380	-	-
50	-	117	154	197	246	302	367	-	-
55	-	-	145	187	235	290	352	-	-
60	-	-	-	176	223	277	337	-	-
65	-	-	-	165	211	263	322	-	-

### Coefficient of performance (C.O.P.)

35	2.33	2.81	3.39	4.08	4.89	5.82	6.90	-	-
40	2.04	2.45	2.94	3.52	4.21	5.01	5.94	-	-
45	1.79	2.13	2.55	3.03	3.61	4.28	5.06	-	-
50	-	1.86	2.20	2.61	3.08	3.64	4.29	-	-
55	-	-	1.91	2.24	2.63	3.09	3.63	-	-
60	-	-	-	1.92	2.24	2.62	3.06	-	-
65	-	-	-	1.65	1.91	2.22	2.58	-	-

### Nominal performance at to = 7.2 °C, tc = 54.4 °C

Cooling capacity	11 531	W
Power input	4 007	W
Current consumption	6.95	A
Mass flow	260	kg/h
C.O.P.	2.88	

to: Evaporating temperature at dew point

tc: Condensing temperature at dew point

Rating conditions : Superheat = 11.1 K , Subcooling = 8.3 K

### Pressure switch settings

Maximum HP switch setting	29.4	bar(g)
Minimum LP switch setting	0.2	bar(g)
LP pump down setting	1.3	bar(g)

### Sound power data

Sound power level	84	dB(A)
With acoustic hood	77	dB(A)

All performance data +/- 5%

# Datasheet, performance data

# Maneurop reciprocating compressor. MTZ050-4

## Performance data at 50 Hz, EN 12900 rating conditions

# R134a

Cond. temp. in °C (tc)	Evaporating temperature in °C (to)							
	-15	-10	-5	0	5	10	15	20

### Cooling capacity in W

35	3 018	4 164	5 583	7 316	9 401	11 877	14 783	18 159	-
40	2 677	3 739	5 052	6 655	8 587	10 887	13 593	16 745	-
45	2 356	3 343	4 557	6 038	7 824	9 955	12 469	15 406	-
50	2 049	2 968	4 091	5 458	7 107	9 077	11 407	14 136	-
55	1 751	2 610	3 650	4 910	6 429	8 246	10 400	12 930	-
60	-	2 263	3 228	4 389	5 787	7 458	9 444	11 782	-
65	-	-	-	3 890	5 173	6 707	8 533	10 687	-
70	-	-	-	-	-	5 988	7 660	9 639	-

### Power input in W

35	1 538	1 712	1 857	1 973	2 062	2 125	2 163	2 176	-
40	1 558	1 760	1 931	2 072	2 185	2 271	2 329	2 363	-
45	1 568	1 801	2 002	2 173	2 313	2 425	2 509	2 566	-
50	1 564	1 832	2 067	2 270	2 442	2 583	2 696	2 780	-
55	1 541	1 848	2 120	2 360	2 566	2 742	2 887	3 002	-
60	-	1 844	2 158	2 437	2 683	2 895	3 077	3 227	-
65	-	-	-	2 498	2 786	3 040	3 261	3 451	-
70	-	-	-	-	-	3 171	3 436	3 668	-

### Current consumption in A

35	3.83	4.08	4.28	4.44	4.56	4.65	4.72	4.76	-
40	3.98	4.24	4.45	4.62	4.75	4.85	4.91	4.95	-
45	4.02	4.32	4.56	4.75	4.90	5.01	5.09	5.14	-
50	3.99	4.33	4.61	4.84	5.02	5.16	5.26	5.34	-
55	3.90	4.29	4.63	4.90	5.13	5.31	5.46	5.57	-
60	-	4.22	4.62	4.97	5.25	5.49	5.69	5.85	-
65	-	-	-	5.04	5.40	5.71	5.97	6.19	-
70	-	-	-	-	-	5.98	6.32	6.62	-

### Mass flow in kg/h

35	73	99	130	167	210	260	318	385	-
40	68	94	124	159	201	250	306	371	-
45	64	88	118	152	193	240	295	358	-
50	59	83	112	146	185	231	284	345	-
55	54	78	106	139	178	222	274	334	-
60	-	72	100	133	170	214	265	323	-
65	-	-	-	126	163	206	256	312	-
70	-	-	-	-	-	199	247	302	-

### Coefficient of performance (C.O.P.)

35	1.96	2.43	3.01	3.71	4.56	5.59	6.84	8.34	-
40	1.72	2.13	2.62	3.21	3.93	4.79	5.84	7.09	-
45	1.50	1.86	2.28	2.78	3.38	4.11	4.97	6.00	-
50	1.31	1.62	1.98	2.40	2.91	3.51	4.23	5.08	-
55	1.14	1.41	1.72	2.08	2.51	3.01	3.60	4.31	-
60	-	1.23	1.50	1.80	2.16	2.58	3.07	3.65	-
65	-	-	-	1.56	1.86	2.21	2.62	3.10	-
70	-	-	-	-	-	1.89	2.23	2.63	-

### Nominal performance at to = 5 °C, tc = 50 °C

Cooling capacity	7 107	W
Power input	2 442	W
Current consumption	5.02	A
Mass flow	185	kg/h
C.O.P.	2.91	

### Pressure switch settings

Maximum HP switch setting	22.6	bar(g)
Minimum LP switch setting	0.2	bar(g)
LP pump down setting	0.5	bar(g)

### Sound power data

Sound power level	0	dB(A)
With acoustic hood	0	dB(A)

to: Evaporating temperature at dew point

tc: Condensing temperature at dew point

Rating conditions : Superheat = 10 K , Subcooling = 0 K

All performance data +/- 5%

Danfoss can accept no responsibility for possible errors in catalogues, brochures and other printed material. Danfoss reserves the right to alter its products without notice. This also applies to products already on order provided that such alterations can be made without subsequent changes being necessary in specifications already agreed. All trademarks in this material are property of the respective companies. Danfoss, the Danfoss logotype and Maneurop are trademarks of Danfoss A/S. All rights reserved.

**Performance data at 50 Hz, ARI rating conditions**
**R134a**

Cond. temp. in °C (tc)	Evaporating temperature in °C (to)							
	-15	-10	-5	0	5	10	15	20

**Cooling capacity in W**

35	3 269	4 502	6 027	7 886	10 118	12 764	15 866	19 462	-
40	2 915	4 064	5 482	7 208	9 285	11 753	14 653	18 024	-
45	2 582	3 655	4 973	6 576	8 505	10 803	13 509	16 664	-
50	2 262	3 268	4 494	5 982	7 773	9 908	12 429	15 375	-
55	1 949	2 897	4 041	5 422	7 083	9 064	11 407	14 154	-
60	-	2 536	3 606	4 890	6 429	8 265	10 440	12 995	-
65	-	-	-	4 380	5 806	7 506	9 522	11 895	-
70	-	-	-	-	-	6 784	8 649	10 850	-

**Power input in W**

35	1 538	1 712	1 857	1 973	2 062	2 125	2 163	2 176	-
40	1 558	1 760	1 931	2 072	2 185	2 271	2 329	2 363	-
45	1 568	1 801	2 002	2 173	2 313	2 425	2 509	2 566	-
50	1 564	1 832	2 067	2 270	2 442	2 583	2 696	2 780	-
55	1 541	1 848	2 120	2 360	2 566	2 742	2 887	3 002	-
60	-	1 844	2 158	2 437	2 683	2 895	3 077	3 227	-
65	-	-	-	2 498	2 786	3 040	3 261	3 451	-
70	-	-	-	-	-	3 171	3 436	3 668	-

**Current consumption in A**

35	3.83	4.08	4.28	4.44	4.56	4.65	4.72	4.76	-
40	3.98	4.24	4.45	4.62	4.75	4.85	4.91	4.95	-
45	4.02	4.32	4.56	4.75	4.90	5.01	5.09	5.14	-
50	3.99	4.33	4.61	4.84	5.02	5.16	5.26	5.34	-
55	3.90	4.29	4.63	4.90	5.13	5.31	5.46	5.57	-
60	-	4.22	4.62	4.97	5.25	5.49	5.69	5.85	-
65	-	-	-	5.04	5.40	5.71	5.97	6.19	-
70	-	-	-	-	-	5.98	6.32	6.62	-

**Mass flow in kg/h**

35	73	99	129	166	209	259	317	383	-
40	68	93	123	158	200	249	305	369	-
45	63	88	117	151	192	239	293	356	-
50	59	83	111	145	184	230	283	343	-
55	53	77	105	138	177	221	273	332	-
60	-	72	100	132	170	213	263	321	-
65	-	-	-	126	163	205	254	310	-
70	-	-	-	-	-	198	246	301	-

**Coefficient of performance (C.O.P.)**

35	2.13	2.63	3.25	4.00	4.91	6.01	7.34	8.94	-
40	1.87	2.31	2.84	3.48	4.25	5.18	6.29	7.63	-
45	1.65	2.03	2.48	3.03	3.68	4.46	5.39	6.50	-
50	1.45	1.78	2.17	2.64	3.18	3.84	4.61	5.53	-
55	1.27	1.57	1.91	2.30	2.76	3.31	3.95	4.71	-
60	-	1.38	1.67	2.01	2.40	2.85	3.39	4.03	-
65	-	-	-	1.75	2.08	2.47	2.92	3.45	-
70	-	-	-	-	-	2.14	2.52	2.96	-

**Nominal performance at to = 7.2 °C, tc = 54.4 °C**

Cooling capacity	8 001	W
Power input	2 631	W
Current consumption	5.20	A
Mass flow	196	kg/h
C.O.P.	3.04	

**Pressure switch settings**

Maximum HP switch setting	22.6	bar(g)
Minimum LP switch setting	0.2	bar(g)
LP pump down setting	0.5	bar(g)

**Sound power data**

Sound power level	0	dB(A)
With accoustic hood	0	dB(A)

to: Evaporating temperature at dew point

tc: Condensing temperature at dew point

Rating conditions : Superheat = 11.1 K , Subcooling = 8.3 K

All performance data +/- 5%

Danfoss can accept no responsibility for possible errors in catalogues, brochures and other printed material. Danfoss reserves the right to alter its products without notice. This also applies to products already on order provided that such alternations can be made without subsequential changes being necessary in specifications already agreed. All trademarks in this material are property of the respective companies. Danfoss, the Danfoss logotype and Maneurop are trademarks of Danfoss A/S. All rights reserved.

# Datasheet, performance data

# Maneurop reciprocating compressor. MTZ050-4

## Performance data at 50 Hz, EN 12900 rating conditions

## R404A

Cond. temp. in °C (tc)	Evaporating temperature in °C (to)								
	-30	-25	-20	-15	-10	-5	0	5	10

### Cooling capacity in W

30	2 747	3 839	5 204	6 879	8 899	11 300	14 117	17 386	21 143
35	2 370	3 366	4 610	6 138	7 986	10 189	12 782	15 802	19 284
40	2 021	2 922	4 047	5 430	7 106	9 112	11 484	14 256	17 464
45	1 695	2 504	3 510	4 749	6 256	8 067	10 218	12 744	15 680
50	1 390	2 108	2 997	4 093	5 432	7 050	8 981	11 262	13 929
55	-	1 730	2 503	3 459	4 631	6 057	7 770	9 808	12 206
60	-	1 367	2 027	2 842	3 850	5 085	6 582	8 378	10 508

### Power input in W

30	1 933	2 197	2 439	2 656	2 846	3 005	3 131	3 223	3 277
35	1 946	2 238	2 508	2 754	2 973	3 164	3 322	3 448	3 536
40	1 948	2 269	2 569	2 846	3 098	3 322	3 515	3 676	3 802
45	1 935	2 288	2 620	2 931	3 218	3 478	3 708	3 907	4 072
50	1 907	2 293	2 661	3 008	3 331	3 629	3 899	4 139	4 345
55	-	2 283	2 688	3 073	3 437	3 775	4 087	4 369	4 619
60	-	2 256	2 701	3 127	3 532	3 913	4 269	4 596	4 893

### Current consumption in A

30	4.36	4.68	4.98	5.26	5.51	5.73	5.90	6.02	6.08
35	4.39	4.73	5.06	5.36	5.65	5.90	6.11	6.27	6.38
40	4.41	4.77	5.13	5.47	5.80	6.09	6.35	6.56	6.73
45	4.41	4.80	5.20	5.58	5.95	6.29	6.60	6.88	7.10
50	4.38	4.81	5.25	5.68	6.10	6.50	6.87	7.20	7.50
55	-	4.79	5.28	5.77	6.24	6.70	7.14	7.54	7.91
60	-	4.74	5.28	5.82	6.36	6.89	7.40	7.88	8.33

### Mass flow in kg/h

30	86	118	156	201	254	315	385	465	556
35	80	111	148	192	243	302	371	449	538
40	74	104	140	183	232	290	357	433	520
45	68	97	132	173	222	278	343	417	502
50	62	91	124	164	211	266	329	401	484
55	-	84	117	155	201	254	315	385	466
60	-	77	109	146	190	242	301	370	448

### Coefficient of performance (C.O.P.)

30	1.42	1.75	2.13	2.59	3.13	3.76	4.51	5.39	6.45
35	1.22	1.50	1.84	2.23	2.69	3.22	3.85	4.58	5.45
40	1.04	1.29	1.58	1.91	2.29	2.74	3.27	3.88	4.59
45	0.88	1.09	1.34	1.62	1.94	2.32	2.76	3.26	3.85
50	0.73	0.92	1.13	1.36	1.63	1.94	2.30	2.72	3.21
55	-	0.76	0.93	1.13	1.35	1.60	1.90	2.24	2.64
60	-	0.61	0.75	0.91	1.09	1.30	1.54	1.82	2.15

### Nominal performance at to = -10 °C, tc = 45 °C

Cooling capacity	6 256	W
Power input	3 218	W
Current consumption	5.95	A
Mass flow	222	kg/h
C.O.P.	1.94	



### Pressure switch settings

Maximum HP switch setting	27.7	bar(g)
Minimum LP switch setting	0.2	bar(g)
LP pump down setting	0.9	bar(g)

### Sound power data

Sound power level	83	dB(A)
With acoustic hood	76	dB(A)

to: Evaporating temperature at dew point

tc: Condensing temperature at dew point

Rating conditions : Superheat = 10 K , Subcooling = 0 K

All performance data +/- 5%



**Performance data at 50 Hz, ARI rating conditions**
**R404A**

Cond. temp. in °C (tc)	Evaporating temperature in °C (to)								
	-30	-25	-20	-15	-10	-5	0	5	10

**Cooling capacity in W**

30	3 058	4 261	5 762	7 599	9 808	12 426	15 492	19 042	23 113
35	2 667	3 775	5 155	6 845	8 881	11 303	14 146	17 449	21 248
40	2 304	3 319	4 580	6 124	7 990	10 216	12 839	15 897	19 427
45	1 965	2 889	4 032	5 433	7 131	9 163	11 569	14 384	17 648
50	1 647	2 482	3 511	4 771	6 303	8 145	10 335	12 912	15 914
55	-	2 096	3 012	4 135	5 505	7 160	9 140	11 484	14 230
60	-	1 728	2 538	3 528	4 741	6 217	7 994	10 114	12 614

**Power input in W**

30	1 933	2 197	2 439	2 656	2 846	3 005	3 131	3 223	3 277
35	1 946	2 238	2 508	2 754	2 973	3 164	3 322	3 448	3 536
40	1 948	2 269	2 569	2 846	3 098	3 322	3 515	3 676	3 802
45	1 935	2 288	2 620	2 931	3 218	3 478	3 708	3 907	4 072
50	1 907	2 293	2 661	3 008	3 331	3 629	3 899	4 139	4 345
55	-	2 283	2 688	3 073	3 437	3 775	4 087	4 369	4 619
60	-	2 256	2 701	3 127	3 532	3 913	4 269	4 596	4 893

**Current consumption in A**

30	4.36	4.68	4.98	5.26	5.51	5.73	5.90	6.02	6.08
35	4.39	4.73	5.06	5.36	5.65	5.90	6.11	6.27	6.38
40	4.41	4.77	5.13	5.47	5.80	6.09	6.35	6.56	6.73
45	4.41	4.80	5.20	5.58	5.95	6.29	6.60	6.88	7.10
50	4.38	4.81	5.25	5.68	6.10	6.50	6.87	7.20	7.50
55	-	4.79	5.28	5.77	6.24	6.70	7.14	7.54	7.91
60	-	4.74	5.28	5.82	6.36	6.89	7.40	7.88	8.33

**Mass flow in kg/h**

30	86	117	155	200	252	313	382	462	552
35	80	111	147	191	241	301	368	446	534
40	74	104	139	181	231	288	355	430	516
45	68	97	131	172	220	276	341	414	498
50	62	90	124	163	210	264	327	399	480
55	-	83	116	154	200	252	313	383	463
60	-	77	108	145	189	240	299	367	445

**Coefficient of performance (C.O.P.)**

30	1.58	1.94	2.36	2.86	3.45	4.14	4.95	5.91	7.05
35	1.37	1.69	2.06	2.49	2.99	3.57	4.26	5.06	6.01
40	1.18	1.46	1.78	2.15	2.58	3.08	3.65	4.32	5.11
45	1.02	1.26	1.54	1.85	2.22	2.63	3.12	3.68	4.33
50	0.86	1.08	1.32	1.59	1.89	2.24	2.65	3.12	3.66
55	-	0.92	1.12	1.35	1.60	1.90	2.24	2.63	3.08
60	-	0.77	0.94	1.13	1.34	1.59	1.87	2.20	2.58

**Nominal performance at to = -10 °C, tc = 45 °C**

Cooling capacity	7 131	W
Power input	3 218	W
Current consumption	5.95	A
Mass flow	220	kg/h
C.O.P.	2.22	

to: Evaporating temperature at dew point

tc: Condensing temperature at dew point

Rating conditions : Superheat = 11.1 K , Subcooling = 8.3 K

**Pressure switch settings**

Maximum HP switch setting	27.7	bar(g)
Minimum LP switch setting	0.2	bar(g)
LP pump down setting	0.9	bar(g)

**Sound power data**

Sound power level	83	dB(A)
With acoustic hood	76	dB(A)

All performance data +/- 5%

