

Datasheets

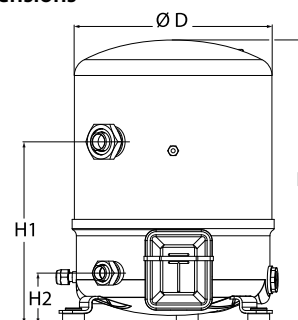
Danfoss Reciprocating compressors **MT / MTZ / NTZ**



General Characteristics

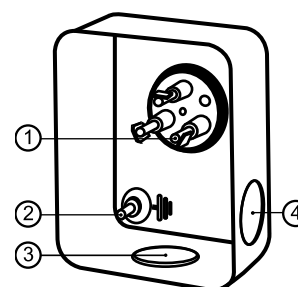
Model number (on compressor nameplate)		MTZ72HN4AVE
Code number for Singlepack*		MTZ72-4VI
Code number for Industrial pack**		MTZ72-4VM
Drawing number		8502012g
Suction and discharge connections		Rotolock
Suction connection		1-3/4" Rotolock
Discharge connection		1-1/4" Rotolock
Suction connection with supplied sleeve		7/8" ODF
Discharge connection with supplied sleeve		3/4" ODF
Oil sight glass		Threaded
Oil equalisation connection		3/8" flare SAE
Oil drain connection		None
LP gauge port		Schrader
IPR valve		30 bar / 8 bar
Cylinders	2	
Swept volume	120,94 cm ³ /rev	
Displacement @ Nominal speed	21.0 m ³ /h @ 2900 rpm - 25.4 m ³ /h @ 3500 rpm	
Net weight	40 kg	
Oil charge	1,8 litre, POE - 160PZ	
Maximum system test pressure Low Side / High side	25 bar(g) / 30 bar(g)	
Maximum differential test pressure	30 bar	
Maximum number of starts per hour	12	
Refrigerant charge limit	5 kg	
Approved refrigerants	R404A, R507A, R134a, R407C, R407A, R407F	

Dimensions



D=288 mm
H=413 mm
H1=265 mm
H2=74 mm
H3=- mm

Terminal box



IP55 (with cable gland)

- 1: Spade connectors 1/4"
- 2: Earth M4-12
- 3: Knock-out Ø 21 mm (0.83")
- 4: Hole Ø 21 mm (0.83")

Electrical Characteristics

Nominal voltage	380-400V/3/50Hz - 460V/3/60Hz
Voltage range	340-440 V @ 50Hz - 414-506 V @ 60Hz
Winding resistance (between phases) +/- 7% at 25°C	1.9 Ω
Maximum Continuous Current (MCC)	17 A
Locked Rotor Amps (LRA)	80 A
Motor protection	Internal overload protector

Recommended Installation torques

Oil sight glass	50 Nm
Power connections / Earth connection	Nm / 2 Nm
Mounting bolts	15 Nm

Parts shipped with compressor

Mounting kit with grommets, bolts, nuts, sleeves and washers
Suction & Discharge solder sleeves, rotolock nuts and gaskets (shipped with rotolock version only)
Initial oil charge
Installation instructions

Approvals : CE certified, UL certified (file SA6873), -

*Singlepack: Compressor in cardboard box

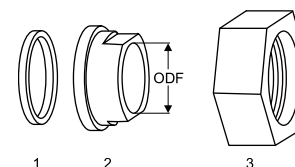
**Industrial pack: 6 Unboxed compressors on pallet (order per multiples of 6)

Rotolock accessories, suction side

Code no.

Solder sleeve, P07 (1-3/4" Rotolock, 7/8" ODF)	8153013
Angle adapter, C07 (1-3/4" Rotolock, 7/8" ODF)	8168008
Rotolock valve, V07 (1-3/4" Rotolock, 7/8" ODF)	8168032
Gasket, 1-3/4"	8156132

Gaskets, sleeves and nuts



- 1: Gasket
2: Solder sleeve
3: Rotolock nut

Rotolock accessories, discharge side

Code no.

Solder sleeve, P04 (1-1/4" Rotolock, 3/4" ODF)	8153008
Angle adapter, C04 (1-1/4" Rotolock, 3/4" ODF)	8168006
Rotolock valve, V04 (1-1/4" Rotolock, 3/4" ODF)	8168029
Gasket, 1-1/4"	8156131

Rotolock accessories, sets

Code no.

Angle adapter set, C07 (1-3/4"~7/8"), C04 (1-1/4"~3/4")	7703013
Valve set, V07 (1-3/4"~7/8"), V04 (1-1/4"~3/4")	7703006
Gasket set, 1", 1-1/4", 1-3/4", OSG gaskets black & white	8156009

Oil / lubricants

Code no.

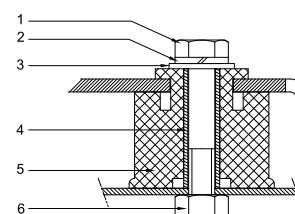
POE lubricant, 160PZ, 1 litre can	7754019
POE lubricant, 160PZ, 2.5 litre can	120Z0573

Crankcase heaters

Code no.

PTC heater 27W, CE mark, UL	120Z0459
Belt type crankcase heater, 65 W, 230 V, CE mark, UL	7773107
Belt type crankcase heater, 65 W, 400 V, CE mark, UL	7773117
Belt type crankcase heater, 65 W, 460 V, CE mark, UL	120Z0466

Mounting kit



- 1: Bolt (3x)
2: Lock washer (3x)
3: Flat washer (3x)
4: Sleeve (3x)
5: Grommet (3x)
6: Nut (3x)

Miscellaneous accessories

Code no.

Electronic soft start kit, MCI 15 C	7705006
Acoustic hood for 2 cylinder compressor	120Z0472
Oil equalisation nut	8153127

Spare parts

Code no.

Mounting kit for 1 and 2 cylinder compressor, including 3 grommets, 3 bolts	8156001
Oil sight glass with gaskets (black & white)	8156019
Gasket for oil sight glass (black chloroprene)	8156145
Service kit for terminal box 80 x 96 mm, including 1 cover, 1 clamp	8156134

Datasheet, performance data

Maneurop reciprocating compressor. MTZ072-4

Performance data at 50 Hz, EN 12900 rating conditions

R407C

Cond. temp. in °C (tc)	Evaporating temperature in °C (to)							
	-15	-10	-5	0	5	10	15	

Cooling capacity in W

35	7 117	9 459	12 275	15 619	19 545	24 108	29 362	-	-
40	6 440	8 650	11 307	14 465	18 178	22 503	27 492	-	-
45	5 767	7 832	10 318	13 278	16 768	20 841	25 553	-	-
50	-	7 018	9 320	12 071	15 324	19 135	23 558	-	-
55	-	-	8 327	10 856	13 861	17 398	21 520	-	-
60	-	-	-	9 645	12 391	15 641	19 450	-	-
65	-	-	-	8 452	10 926	13 877	17 361	-	-

Power input in W

35	3 308	3 657	3 961	4 218	4 426	4 584	4 691	-	-
40	3 415	3 824	4 187	4 504	4 774	4 994	5 163	-	-
45	3 488	3 960	4 389	4 771	5 106	5 392	5 629	-	-
50	-	4 064	4 562	5 015	5 421	5 778	6 086	-	-
55	-	-	4 705	5 232	5 714	6 148	6 533	-	-
60	-	-	-	5 422	5 984	6 499	6 966	-	-
65	-	-	-	5 580	6 227	6 829	7 382	-	-

Current consumption in A

35	7.28	7.67	8.03	8.34	8.60	8.81	8.95	-	-
40	7.40	7.86	8.28	8.66	8.99	9.26	9.47	-	-
45	7.51	8.04	8.54	9.00	9.41	9.77	10.07	-	-
50	-	8.20	8.79	9.34	9.85	10.31	10.70	-	-
55	-	-	9.00	9.66	10.27	10.84	11.36	-	-
60	-	-	-	9.92	10.66	11.35	11.99	-	-
65	-	-	-	10.09	10.97	11.80	12.58	-	-

Mass flow in kg/h

35	154	202	258	323	398	484	581	-	-
40	147	194	249	314	388	473	570	-	-
45	139	185	240	303	376	461	557	-	-
50	-	176	229	291	364	447	542	-	-
55	-	-	218	279	350	431	524	-	-
60	-	-	-	265	334	414	506	-	-
65	-	-	-	251	318	396	486	-	-

Coefficient of performance (C.O.P.)

35	2.15	2.59	3.10	3.70	4.42	5.26	6.26	-	-
40	1.89	2.26	2.70	3.21	3.81	4.51	5.33	-	-
45	1.65	1.98	2.35	2.78	3.28	3.86	4.54	-	-
50	-	1.73	2.04	2.41	2.83	3.31	3.87	-	-
55	-	-	1.77	2.07	2.43	2.83	3.29	-	-
60	-	-	-	1.78	2.07	2.41	2.79	-	-
65	-	-	-	1.51	1.75	2.03	2.35	-	-

Nominal performance at to = 5 °C, tc = 50 °C

Cooling capacity	15 324	W
Power input	5 421	W
Current consumption	9.85	A
Mass flow	364	kg/h
C.O.P.	2.83	



to: Evaporating temperature at dew point

tc: Condensing temperature at dew point

Rating conditions : Superheat = 10 K , Subcooling = 0 K

Pressure switch settings

Maximum HP switch setting	29.4	bar(g)
Minimum LP switch setting	0.2	bar(g)
LP pump down setting	1.3	bar(g)

Sound power data

Sound power level	82	dB(A)
With acoustic hood	75	dB(A)

All performance data +/- 5%

Performance data at 50 Hz, ARI rating conditions
R407C

Cond. temp. in °C (tc)	Evaporating temperature in °C (to)							
	-15	-10	-5	0	5	10	15	

Cooling capacity in W

35	7 660	10 169	13 180	16 752	20 940	25 801	31 394	-	-
40	6 970	9 349	12 204	15 592	19 572	24 200	29 533	-	-
45	6 281	8 517	11 203	14 397	18 157	22 538	27 600	-	-
50	-	7 687	10 192	13 179	16 706	20 830	25 610	-	-
55	-	-	9 184	11 952	15 234	19 088	23 574	-	-
60	-	-	-	10 728	13 754	17 328	21 508	-	-
65	-	-	-	9 524	12 282	15 564	19 430	-	-

Power input in W

35	3 308	3 657	3 961	4 218	4 426	4 584	4 691	-	-
40	3 415	3 824	4 187	4 504	4 774	4 994	5 163	-	-
45	3 488	3 960	4 389	4 771	5 106	5 392	5 629	-	-
50	-	4 064	4 562	5 015	5 421	5 778	6 086	-	-
55	-	-	4 705	5 232	5 714	6 148	6 533	-	-
60	-	-	-	5 422	5 984	6 499	6 966	-	-
65	-	-	-	5 580	6 227	6 829	7 382	-	-

Current consumption in A

35	7.28	7.67	8.03	8.34	8.60	8.81	8.95	-	-
40	7.40	7.86	8.28	8.66	8.99	9.26	9.47	-	-
45	7.51	8.04	8.54	9.00	9.41	9.77	10.07	-	-
50	-	8.20	8.79	9.34	9.85	10.31	10.70	-	-
55	-	-	9.00	9.66	10.27	10.84	11.36	-	-
60	-	-	-	9.92	10.66	11.35	11.99	-	-
65	-	-	-	10.09	10.97	11.80	12.58	-	-

Mass flow in kg/h

35	154	201	256	321	396	481	578	-	-
40	146	193	248	312	386	470	567	-	-
45	138	184	238	301	374	458	553	-	-
50	-	175	228	290	362	444	538	-	-
55	-	-	217	277	348	429	521	-	-
60	-	-	-	264	333	412	503	-	-
65	-	-	-	250	316	394	483	-	-

Coefficient of performance (C.O.P.)

35	2.32	2.78	3.33	3.97	4.73	5.63	6.69	-	-
40	2.04	2.44	2.91	3.46	4.10	4.85	5.72	-	-
45	1.80	2.15	2.55	3.02	3.56	4.18	4.90	-	-
50	-	1.89	2.23	2.63	3.08	3.60	4.21	-	-
55	-	-	1.95	2.28	2.67	3.10	3.61	-	-
60	-	-	-	1.98	2.30	2.67	3.09	-	-
65	-	-	-	1.71	1.97	2.28	2.63	-	-

Nominal performance at to = 7.2 °C, tc = 54.4 °C

Cooling capacity	17 047	W
Power input	5 873	W
Current consumption	10.48	A
Mass flow	384	kg/h
C.O.P.	2.90	

to: Evaporating temperature at dew point

tc: Condensing temperature at dew point

Rating conditions : Superheat = 11.1 K , Subcooling = 8.3 K

Pressure switch settings

Maximum HP switch setting	29.4	bar(g)
Minimum LP switch setting	0.2	bar(g)
LP pump down setting	1.3	bar(g)

Sound power data

Sound power level	82	dB(A)
With acoustic hood	75	dB(A)

All performance data +/- 5%

Performance data at 50 Hz, EN 12900 rating conditions
R134a

Cond. temp. in °C (tc)	Evaporating temperature in °C (to)							
	-15	-10	-5	0	5	10	15	20

Cooling capacity in W

35	3 984	5 591	7 551	9 911	12 715	16 009	19 838	24 247	-
40	3 594	5 130	6 999	9 247	11 918	15 058	18 713	22 928	-
45	3 197	4 656	6 427	8 556	11 089	14 069	17 544	21 557	-
50	2 800	4 175	5 843	7 847	10 234	13 049	16 337	20 143	-
55	2 409	3 695	5 252	7 126	9 362	12 005	15 100	18 693	-
60	-	3 222	4 663	6 400	8 478	10 943	13 839	17 212	-
65	-	-	-	5 676	7 590	9 870	12 561	15 709	-
70	-	-	-	-	-	8 794	11 274	14 189	-

Power input in W

35	2 095	2 356	2 587	2 791	2 971	3 130	3 270	3 396	-
40	2 139	2 437	2 703	2 939	3 148	3 334	3 500	3 648	-
45	2 164	2 503	2 808	3 081	3 325	3 544	3 739	3 916	-
50	2 166	2 552	2 901	3 216	3 499	3 755	3 986	4 195	-
55	2 142	2 579	2 977	3 339	3 667	3 965	4 236	4 483	-
60	-	2 583	3 035	3 449	3 827	4 172	4 487	4 777	-
65	-	-	-	3 542	3 974	4 371	4 737	5 073	-
70	-	-	-	-	-	4 561	4 981	5 371	-

Current consumption in A

35	6.39	6.54	6.72	6.91	7.10	7.28	7.43	7.55	-
40	6.42	6.61	6.83	7.05	7.27	7.49	7.67	7.82	-
45	6.44	6.67	6.93	7.20	7.46	7.71	7.94	8.13	-
50	6.43	6.72	7.02	7.34	7.66	7.96	8.23	8.46	-
55	6.40	6.75	7.11	7.48	7.85	8.21	8.54	8.82	-
60	-	6.75	7.18	7.62	8.05	8.47	8.86	9.21	-
65	-	-	-	7.75	8.25	8.73	9.19	9.60	-
70	-	-	-	-	-	9.00	9.53	10.02	-

Mass flow in kg/h

35	97	133	176	226	284	351	427	513	-
40	92	128	171	221	279	346	422	508	-
45	86	123	166	216	273	340	415	501	-
50	80	117	160	209	267	332	407	492	-
55	74	110	153	202	259	324	398	482	-
60	-	103	145	193	250	314	388	471	-
65	-	-	-	184	240	304	376	459	-
70	-	-	-	-	-	292	364	445	-

Coefficient of performance (C.O.P.)

35	1.90	2.37	2.92	3.55	4.28	5.12	6.07	7.14	-
40	1.68	2.10	2.59	3.15	3.79	4.52	5.35	6.28	-
45	1.48	1.86	2.29	2.78	3.33	3.97	4.69	5.51	-
50	1.29	1.64	2.01	2.44	2.92	3.48	4.10	4.80	-
55	1.13	1.43	1.76	2.13	2.55	3.03	3.56	4.17	-
60	-	1.25	1.54	1.86	2.22	2.62	3.08	3.60	-
65	-	-	-	1.60	1.91	2.26	2.65	3.10	-
70	-	-	-	-	-	1.93	2.26	2.64	-

Nominal performance at to = 5 °C, tc = 50 °C

Cooling capacity	10 234	W
Power input	3 499	W
Current consumption	7.66	A
Mass flow	267	kg/h
C.O.P.	2.92	

Pressure switch settings

Maximum HP switch setting	22.6	bar(g)
Minimum LP switch setting	0.2	bar(g)
LP pump down setting	0.5	bar(g)

Sound power data

Sound power level	0	dB(A)
With acoustic hood	0	dB(A)

to: Evaporating temperature at dew point

tc: Condensing temperature at dew point

Rating conditions : Superheat = 10 K , Subcooling = 0 K

All performance data +/- 5%

Danfoss can accept no responsibility for possible errors in catalogues, brochures and other printed material. Danfoss reserves the right to alter its products without notice. This also applies to products already on order provided that such alternations can be made without subsequential changes being necessary in specifications already agreed. All trademarks in this material are property of the respective companies. Danfoss, the Danfoss logotype and Maneurop are trademarks of Danfoss A/S. All rights reserved.

Performance data at 50 Hz, ARI rating conditions
R134a

Cond. temp. in °C (tc)	Evaporating temperature in °C (to)							
	-15	-10	-5	0	5	10	15	20

Cooling capacity in W

35	4 315	6 045	8 152	10 683	13 685	17 205	21 290	25 988	-
40	3 914	5 576	7 594	10 015	12 887	16 257	20 172	24 679	-
45	3 503	5 091	7 013	9 319	12 054	15 268	19 006	23 317	-
50	3 090	4 597	6 418	8 601	11 194	14 245	17 801	21 909	-
55	2 682	4 101	5 814	7 869	10 313	13 195	16 562	20 462	-
60	-	3 611	5 210	7 130	9 419	12 126	15 298	18 984	-
65	-	-	-	6 391	8 519	11 046	14 018	17 484	-
70	-	-	-	-	-	9 962	12 729	15 972	-

Power input in W

35	2 095	2 356	2 587	2 791	2 971	3 130	3 270	3 396	-
40	2 139	2 437	2 703	2 939	3 148	3 334	3 500	3 648	-
45	2 164	2 503	2 808	3 081	3 325	3 544	3 739	3 916	-
50	2 166	2 552	2 901	3 216	3 499	3 755	3 986	4 195	-
55	2 142	2 579	2 977	3 339	3 667	3 965	4 236	4 483	-
60	-	2 583	3 035	3 449	3 827	4 172	4 487	4 777	-
65	-	-	-	3 542	3 974	4 371	4 737	5 073	-
70	-	-	-	-	-	4 561	4 981	5 371	-

Current consumption in A

35	6.39	6.54	6.72	6.91	7.10	7.28	7.43	7.55	-
40	6.42	6.61	6.83	7.05	7.27	7.49	7.67	7.82	-
45	6.44	6.67	6.93	7.20	7.46	7.71	7.94	8.13	-
50	6.43	6.72	7.02	7.34	7.66	7.96	8.23	8.46	-
55	6.40	6.75	7.11	7.48	7.85	8.21	8.54	8.82	-
60	-	6.75	7.18	7.62	8.05	8.47	8.86	9.21	-
65	-	-	-	7.75	8.25	8.73	9.19	9.60	-
70	-	-	-	-	-	9.00	9.53	10.02	-

Mass flow in kg/h

35	96	132	175	225	283	349	424	510	-
40	91	128	170	220	278	344	419	505	-
45	86	122	165	215	272	338	413	498	-
50	80	116	159	208	265	331	405	489	-
55	74	110	152	201	257	322	396	480	-
60	-	102	144	192	248	313	386	469	-
65	-	-	-	183	239	302	374	456	-
70	-	-	-	-	-	290	362	442	-

Coefficient of performance (C.O.P.)

35	2.06	2.57	3.15	3.83	4.61	5.50	6.51	7.65	-
40	1.83	2.29	2.81	3.41	4.09	4.88	5.76	6.76	-
45	1.62	2.03	2.50	3.02	3.63	4.31	5.08	5.95	-
50	1.43	1.80	2.21	2.67	3.20	3.79	4.47	5.22	-
55	1.25	1.59	1.95	2.36	2.81	3.33	3.91	4.56	-
60	-	1.40	1.72	2.07	2.46	2.91	3.41	3.97	-
65	-	-	-	1.80	2.14	2.53	2.96	3.45	-
70	-	-	-	-	-	2.18	2.56	2.97	-

Nominal performance at to = 7.2 °C, tc = 54.4 °C

Cooling capacity	11 640	W
Power input	3 780	W
Current consumption	7.99	A
Mass flow	286	kg/h
C.O.P.	3.08	

Pressure switch settings

Maximum HP switch setting	22.6	bar(g)
Minimum LP switch setting	0.2	bar(g)
LP pump down setting	0.5	bar(g)

Sound power data

Sound power level	0	dB(A)
With accoustic hood	0	dB(A)

to: Evaporating temperature at dew point

tc: Condensing temperature at dew point

Rating conditions : Superheat = 11.1 K , Subcooling = 8.3 K

All performance data +/- 5%

Danfoss can accept no responsibility for possible errors in catalogues, brochures and other printed material. Danfoss reserves the right to alter its products without notice. This also applies to products already on order provided that such alternations can be made without subsequential changes being necessary in specifications already agreed. All trademarks in this material are property of the respective companies. Danfoss, the Danfoss logotype and Maneurop are trademarks of Danfoss A/S. All rights reserved.

Performance data at 50 Hz, EN 12900 rating conditions
R404A

Cond. temp. in °C (tc)	Evaporating temperature in °C (to)								
	-30	-25	-20	-15	-10	-5	0	5	10

Cooling capacity in W

30	4 049	5 567	7 457	9 763	12 535	15 819	19 661	24 109	29 209
35	3 504	4 891	6 619	8 735	11 286	14 319	17 881	22 019	26 781
40	3 007	4 262	5 828	7 752	10 082	12 864	16 146	19 974	24 395
45	2 552	3 674	5 078	6 810	8 918	11 449	14 449	17 966	22 046
50	2 135	3 123	4 364	5 903	7 789	10 067	12 785	15 991	19 730
55	-	2 604	3 681	5 027	6 689	8 715	11 150	14 043	17 441
60	-	2 111	3 023	4 175	5 614	7 386	9 538	12 119	15 173

Power input in W

30	2 764	3 166	3 541	3 886	4 196	4 469	4 701	4 887	5 025
35	2 767	3 206	3 623	4 012	4 371	4 695	4 981	5 226	5 425
40	2 756	3 234	3 692	4 126	4 533	4 909	5 250	5 552	5 813
45	2 736	3 253	3 752	4 231	4 686	5 113	5 509	5 870	6 192
50	2 710	3 265	3 806	4 330	4 833	5 312	5 763	6 182	6 565
55	-	3 274	3 857	4 426	4 977	5 508	6 014	6 491	6 936
60	-	3 284	3 908	4 522	5 122	5 704	6 265	6 801	7 308

Current consumption in A

30	6.79	7.16	7.56	7.99	8.42	8.84	9.22	9.57	9.86
35	6.81	7.22	7.66	8.13	8.60	9.06	9.50	9.90	10.24
40	6.80	7.25	7.74	8.25	8.77	9.29	9.78	10.23	10.63
45	6.77	7.27	7.80	8.37	8.95	9.52	10.07	10.59	11.05
50	6.73	7.28	7.87	8.49	9.13	9.77	10.38	10.97	11.50
55	-	7.29	7.94	8.63	9.34	10.04	10.73	11.38	11.99
60	-	7.31	8.04	8.79	9.57	10.35	11.11	11.85	12.53

Mass flow in kg/h

30	127	171	224	286	358	441	536	644	767
35	119	161	213	273	343	425	519	626	746
40	110	152	202	261	330	410	502	607	726
45	103	143	191	249	316	394	485	588	706
50	96	134	181	237	303	380	468	570	686
55	-	126	171	226	290	365	452	552	666
60	-	119	162	215	277	351	436	534	646

Coefficient of performance (C.O.P.)

30	1.46	1.76	2.11	2.51	2.99	3.54	4.18	4.93	5.81
35	1.27	1.53	1.83	2.18	2.58	3.05	3.59	4.21	4.94
40	1.09	1.32	1.58	1.88	2.22	2.62	3.08	3.60	4.20
45	0.93	1.13	1.35	1.61	1.90	2.24	2.62	3.06	3.56
50	0.79	0.96	1.15	1.36	1.61	1.90	2.22	2.59	3.01
55	-	0.80	0.95	1.14	1.34	1.58	1.85	2.16	2.51
60	-	0.64	0.77	0.92	1.10	1.29	1.52	1.78	2.08

Nominal performance at to = -10 °C, tc = 45 °C

Cooling capacity	8 918	W
Power input	4 686	W
Current consumption	8.95	A
Mass flow	316	kg/h
C.O.P.	1.90	


Pressure switch settings

Maximum HP switch setting	27.7	bar(g)
Minimum LP switch setting	0.2	bar(g)
LP pump down setting	0.9	bar(g)

Sound power data

Sound power level	79	dB(A)
With acoustic hood	72	dB(A)

to: Evaporating temperature at dew point

tc: Condensing temperature at dew point

Rating conditions : Superheat = 10 K , Subcooling = 0 K

All performance data +/- 5%

Performance data at 50 Hz, ARI rating conditions
R404A

Cond. temp. in °C (tc)	Evaporating temperature in °C (to)								
	-30	-25	-20	-15	-10	-5	0	5	10

Cooling capacity in W

30	4 507	6 181	8 257	10 785	13 814	17 395	21 575	26 404	31 931
35	3 943	5 486	7 402	9 740	12 551	15 884	19 789	24 314	29 509
40	3 428	4 840	6 595	8 744	11 336	14 422	18 051	22 272	27 136
45	2 958	4 239	5 833	7 792	10 166	13 005	16 359	20 279	24 813
50	2 529	3 678	5 112	6 881	9 037	11 631	14 713	18 333	22 542
55	-	3 155	4 429	6 010	7 951	10 302	13 116	16 443	20 334
60	-	2 668	3 786	5 183	6 913	9 030	11 585	14 629	18 214

Power input in W

30	2 764	3 166	3 541	3 886	4 196	4 469	4 701	4 887	5 025
35	2 767	3 206	3 623	4 012	4 371	4 695	4 981	5 226	5 425
40	2 756	3 234	3 692	4 126	4 533	4 909	5 250	5 552	5 813
45	2 736	3 253	3 752	4 231	4 686	5 113	5 509	5 870	6 192
50	2 710	3 265	3 806	4 330	4 833	5 312	5 763	6 182	6 565
55	-	3 274	3 857	4 426	4 977	5 508	6 014	6 491	6 936
60	-	3 284	3 908	4 522	5 122	5 704	6 265	6 801	7 308

Current consumption in A

30	6.79	7.16	7.56	7.99	8.42	8.84	9.22	9.57	9.86
35	6.81	7.22	7.66	8.13	8.60	9.06	9.50	9.90	10.24
40	6.80	7.25	7.74	8.25	8.77	9.29	9.78	10.23	10.63
45	6.77	7.27	7.80	8.37	8.95	9.52	10.07	10.59	11.05
50	6.73	7.28	7.87	8.49	9.13	9.77	10.38	10.97	11.50
55	-	7.29	7.94	8.63	9.34	10.04	10.73	11.38	11.99
60	-	7.31	8.04	8.79	9.57	10.35	11.11	11.85	12.53

Mass flow in kg/h

30	126	170	223	284	355	438	533	640	762
35	118	161	211	271	341	422	516	622	741
40	110	151	201	259	328	407	499	603	721
45	102	142	190	247	314	392	482	585	701
50	95	134	180	235	301	377	465	566	681
55	-	126	170	224	288	363	449	548	661
60	-	118	161	214	276	349	433	531	642

Coefficient of performance (C.O.P.)

30	1.63	1.95	2.33	2.78	3.29	3.89	4.59	5.40	6.35
35	1.43	1.71	2.04	2.43	2.87	3.38	3.97	4.65	5.44
40	1.24	1.50	1.79	2.12	2.50	2.94	3.44	4.01	4.67
45	1.08	1.30	1.55	1.84	2.17	2.54	2.97	3.45	4.01
50	0.93	1.13	1.34	1.59	1.87	2.19	2.55	2.97	3.43
55	-	0.96	1.15	1.36	1.60	1.87	2.18	2.53	2.93
60	-	0.81	0.97	1.15	1.35	1.58	1.85	2.15	2.49

Nominal performance at to = -10 °C, tc = 45 °C

Cooling capacity	10 166	W
Power input	4 686	W
Current consumption	8.95	A
Mass flow	314	kg/h
C.O.P.	2.17	

Pressure switch settings

Maximum HP switch setting	27.7	bar(g)
Minimum LP switch setting	0.2	bar(g)
LP pump down setting	0.9	bar(g)

Sound power data

Sound power level	79	dB(A)
With acoustic hood	72	dB(A)

to: Evaporating temperature at dew point

tc: Condensing temperature at dew point

Rating conditions : Superheat = 11.1 K , Subcooling = 8.3 K

All performance data +/- 5%

