

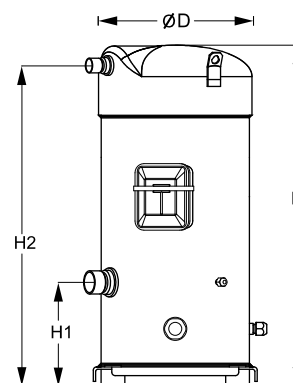


Performer Scroll compressors

General Characteristics

Model number (on compressor nameplate)		SM148T4VC
Code number for Singlepack*		SM148-4VAI
Code number for Industrial pack**		SM148-4VAM
Drawing number		8551106b
Suction and discharge connections		Brazed
Suction connection		1-3/8" ODF
Discharge connection		7/8" ODF
Oil sight glass		Threaded
Oil equalisation connection		3/8" flare SAE
Oil drain connection		None
LP gauge port		Schrader
IPR valve		None
Swept volume		199 cm ³ /rev
Displacement @ Nominal speed		34.6 m ³ /h @ 2900 rpm - 41.8 m ³ /h @ 3500 rpm
Net weight		88 kg
Oil charge		3.6 litre, Mineral - 160P
Maximum system test pressure Low Side / High side		25 bar(g) / 32 bar(g)
Maximum differential test pressure		24 bar
Maximum number of starts per hour		12
Refrigerant charge limit		12.5 kg
Approved refrigerants		R22

Dimensions



D=266 mm

H=591 mm

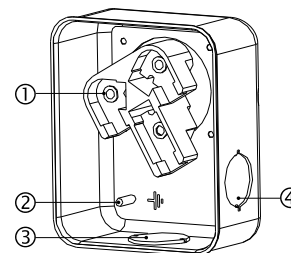
H1=180 mm

H2=556 mm

Electrical Characteristics

Nominal voltage	380-400V/3/50Hz - 460V/3/60Hz
Voltage range	340-440 V @ 50Hz - 414-506 V @ 60Hz
Winding resistance (between phases) +/- 7% at 25°C	0.94 Ω
Rated Load Amps (RLA)	22.9 A
Maximum Continuous Current (MCC)	32 A
Locked Rotor Amps (LRA)	145 A
Motor protection	Internal overload protector

Terminal box



IP54 (with cable gland)

- 1: Power connection, 3 x 4.8 mm (3/16")
- 2: Earth M4-12
- 3: Knock-out Ø 29 mm (1.14")
- 4: Knock-out Ø 25.5 mm (1.00")

Recommended Installation torques

Oil sight glass	50 Nm
Power connections / Earth connection	3 Nm / 2 Nm
Mounting bolts	21 Nm

Parts shipped with compressor

Mounting kit with grommets, bolts, nuts, sleeves and washers
Initial oil charge
Installation instructions

Approvals : CE certified, UL certified (file SA6873), -

*Singlepack: Compressor in cardboard box

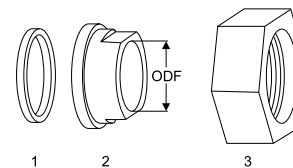
**Industrial pack: 6 Unboxed compressors on pallet (order per multiples of 6)

Rotolock accessories, suction side

Code no.

Solder sleeve, P10 (1-3/4" Rotolock, 1-3/8" ODF)	8153003
Rotolock valve, V10 (1-3/4" Rotolock, 1-3/8" ODF)	8168022
Gasket, 1-3/4"	8156132

Gaskets, sleeves and nuts



- 1: Gasket
- 2: Solder sleeve
- 3: Rotolock nut

Rotolock accessories, discharge side

Code no.

Solder sleeve with rotolock, P05 (1-1/4" Rotolock, 7/8" ODS)	8153012
Rotolock valve, V05 (1-1/4" Rotolock, 7/8" ODF)	8168030
Gasket, 1-1/4"	8156131

Rotolock accessories, sets

Code no.

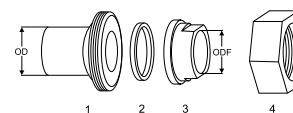
Solder sleeve adapter set (1-3/4" Rotolock, 1-3/8" ODF), (1-1/4" Rotolock, 7/8" ODF)	7765006
Valve set, V10 (1-3/4"~1-3/8"), V05 (1-1/4"~7/8")	7703392
Gasket set, 1", 1-1/4", 1-3/4", OSG gaskets black & white	8156009

Oil / lubricants

Code no.

Mineral oil, 160P, 2 litre can	7754001
Mineral oil, 160P, 5 litre can	7754002

Solder sleeve adapter set



- 1: Rotolock adapter (Suc & Dis)
- 2: Gasket (Suc & Dis)
- 3: Solder sleeve (Suc & Dis)
- 4: Rotolock nut (Suc & Dis)

Crankcase heaters

Code no.

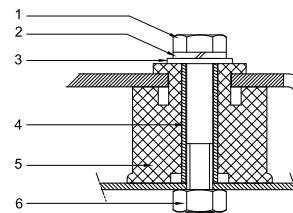
Surface sump heater, 80 W, 24 V, CE mark, UL	120Z0388
Surface sump heater, 80 W, 230 V, CE mark, UL	120Z0389
Surface sump heater, 80 W, 400 V, CE mark, UL	120Z0390
Surface sump heater, 80 W, 460 V, CE mark	120Z0391
Belt type crankcase heater, 65 W, 230 V, CE mark, UL	120Z0038
Belt type crankcase heater, 65 W, 400 V, CE mark, UL	120Z0039
Belt type crankcase heater, 50 W, 240 V, UL	7773003
Belt type crankcase heater, 50 W, 400 V, UL	7773009
Belt type crankcase heater, 50 W, 460 V, UL	7773006

Miscellaneous accessories

Code no.

Electronic soft start kit, MCI 25 C	7705007
Acoustic hood for scroll compressor S148-S161 (except code 3)	7755017
Discharge thermostat kit	7750009

Mounting kit



- 1: Bolt (4x)
- 2: Lock washer (4x)
- 3: Flat washer (4x)
- 4: Sleeve (4x)
- 5: Grommet (4x)
- 6: Nut (4x)

Spare parts

Code no.

Mounting kit for 1 scroll compressor including 4 grommets, 4 sleeves, 4 bolts, 4 washers	8156138
Oil sight glass with gaskets (black & white)	8156019
Gasket for oil sight glass (white teflon)	8156129
Service kit for terminal box 96 x 115 mm, including 1 cover, 1 clamp, 1 T block connector 52 x 57 mm	8156135
T block connector 52 x 57 mm	8173230

Danfoss can accept no responsibility for possible errors in catalogues, brochures and other printed material. Danfoss reserves the right to alter its products without notice. This also applies to products already on order provided that such alternations can be made without subsequential changes being necessary in specifications already agreed. All trademarks in this material are property of the respective companies. Danfoss, the Danfoss logotype and Performer are trademarks of Danfoss A/S. All rights reserved.

Performance data at 50 Hz, EN 12900 rating conditions

R22

Cond. temp. in °C (tc)	Evaporating temperature in °C (to)							
	-20	-15	-10	-5	0	5	10	15

Cooling capacity in W

30	14 712	18 318	22 513	27 367	32 949	39 327	46 571	54 748	-
35	13 921	17 429	21 501	26 207	31 615	37 794	44 813	52 741	-
40	13 093	16 489	20 425	24 968	30 189	36 155	42 935	50 598	-
45	-	15 508	19 292	23 659	28 678	34 417	40 944	48 330	-
50	-	-	18 111	22 288	27 091	32 588	38 849	45 943	-
55	-	-	-	20 863	25 436	30 678	36 658	43 446	-
60	-	-	-	-	23 721	28 694	34 379	40 846	-
65	-	-	-	-	21 954	26 643	32 020	38 153	-

Power input in W

30	6 291	6 334	6 382	6 430	6 476	6 516	6 547	6 564	-
35	7 006	7 041	7 083	7 129	7 176	7 221	7 259	7 288	-
40	7 816	7 837	7 870	7 910	7 953	7 998	8 039	8 075	-
45	-	8 741	8 759	8 788	8 824	8 864	8 904	8 941	-
50	-	-	9 766	9 780	9 804	9 835	9 870	9 905	-
55	-	-	-	10 902	10 910	10 928	10 952	10 981	-
60	-	-	-	-	12 158	12 158	12 169	12 186	-
65	-	-	-	-	13 565	13 543	13 535	13 536	-

Current consumption in A

30	13.73	13.81	13.85	13.85	13.85	13.85	13.89	13.97	-
35	14.48	14.57	14.61	14.63	14.62	14.63	14.66	14.73	-
40	15.35	15.45	15.51	15.52	15.52	15.53	15.55	15.62	-
45	-	16.48	16.54	16.57	16.57	16.58	16.60	16.66	-
50	-	-	17.75	17.78	17.79	17.80	17.82	17.87	-
55	-	-	-	19.19	19.20	19.21	19.23	19.28	-
60	-	-	-	-	20.83	20.84	20.86	20.91	-
65	-	-	-	-	22.70	22.71	22.74	22.78	-

Mass flow in kg/h

30	316	388	471	566	673	794	931	1 083	-
35	311	384	467	562	670	792	929	1 082	-
40	305	378	462	557	665	787	925	1 078	-
45	-	372	456	551	659	781	918	1 072	-
50	-	-	448	543	651	773	910	1 064	-
55	-	-	-	534	642	763	900	1 053	-
60	-	-	-	-	630	752	888	1 041	-
65	-	-	-	-	617	738	874	1 026	-

Coefficient of performance (C.O.P.)

30	2.34	2.89	3.53	4.26	5.09	6.04	7.11	8.34	-
35	1.99	2.48	3.04	3.68	4.41	5.23	6.17	7.24	-
40	1.68	2.10	2.60	3.16	3.80	4.52	5.34	6.27	-
45	-	1.77	2.20	2.69	3.25	3.88	4.60	5.41	-
50	-	-	1.85	2.28	2.76	3.31	3.94	4.64	-
55	-	-	-	1.91	2.33	2.81	3.35	3.96	-
60	-	-	-	-	1.95	2.36	2.83	3.35	-
65	-	-	-	-	1.62	1.97	2.37	2.82	-

Nominal performance at to = 5 °C, tc = 50 °C

Cooling capacity	32 588	W
Power input	9 835	W
Current consumption	17.80	A
Mass flow	773	kg/h
C.O.P.	3.31	

Pressure switch settings

Maximum HP switch setting	28	bar(g)
Minimum LP switch setting	0.5	bar(g)
LP pump down setting	1.3	bar(g)

Sound power data

Sound power level	79	dB(A)
With acoustic hood	71	dB(A)

to: Evaporating temperature at dew point

tc: Condensing temperature at dew point

Rating conditions : Superheat = 10 K, Subcooling = 0 K

All performance data +/- 5%

Danfoss can accept no responsibility for possible errors in catalogues, brochures and other printed material. Danfoss reserves the right to alter its products without notice. This also applies to products already on order provided that such alternations can be made without subsequential changes being necessary in specifications already agreed. All trademarks in this material are property of the respective companies. Danfoss, the Danfoss logotype and Performer are trademarks of Danfoss A/S. All rights reserved.

Performance data at 50 Hz, ARI rating conditions

R22

Cond. temp. in °C (tc)	Evaporating temperature in °C (to)							
	-20	-15	-10	-5	0	5	10	15

Cooling capacity in W

30	15 610	19 420	23 850	28 971	34 855	41 574	49 199	57 802	-
35	14 824	18 543	22 857	27 837	33 556	40 085	47 496	55 860	-
40	13 994	17 607	21 790	26 614	32 152	38 475	45 655	53 765	-
45	-	16 637	20 677	25 333	30 678	36 785	43 724	51 570	-
50	-	-	19 502	23 974	29 111	34 984	41 667	49 231	-
55	-	-	-	22 566	27 481	33 109	39 522	46 794	-
60	-	-	-	-	25 807	31 178	37 313	44 283	-
65	-	-	-	-	24 068	29 169	35 009	41 662	-

Power input in W

30	6 291	6 334	6 382	6 430	6 476	6 516	6 547	6 564	-
35	7 006	7 041	7 083	7 129	7 176	7 221	7 259	7 288	-
40	7 816	7 837	7 870	7 910	7 953	7 998	8 039	8 075	-
45	-	8 741	8 759	8 788	8 824	8 864	8 904	8 941	-
50	-	-	9 766	9 780	9 804	9 835	9 870	9 905	-
55	-	-	-	10 902	10 910	10 928	10 952	10 981	-
60	-	-	-	-	12 158	12 158	12 169	12 186	-
65	-	-	-	-	13 565	13 543	13 535	13 536	-

Current consumption in A

30	13.73	13.81	13.85	13.85	13.85	13.85	13.89	13.97	-
35	14.48	14.57	14.61	14.63	14.62	14.63	14.66	14.73	-
40	15.35	15.45	15.51	15.52	15.52	15.53	15.55	15.62	-
45	-	16.48	16.54	16.57	16.57	16.58	16.60	16.66	-
50	-	-	17.75	17.78	17.79	17.80	17.82	17.87	-
55	-	-	-	19.19	19.20	19.21	19.23	19.28	-
60	-	-	-	-	20.83	20.84	20.86	20.91	-
65	-	-	-	-	22.70	22.71	22.74	22.78	-

Mass flow in kg/h

30	314	386	469	563	669	790	925	1 077	-
35	309	382	465	559	667	787	923	1 075	-
40	303	376	460	555	662	783	919	1 072	-
45	-	370	453	548	656	777	913	1 066	-
50	-	-	445	540	648	769	905	1 058	-
55	-	-	-	531	638	759	895	1 047	-
60	-	-	-	-	627	747	883	1 035	-
65	-	-	-	-	614	734	869	1 020	-

Coefficient of performance (C.O.P.)

30	2.48	3.07	3.74	4.51	5.38	6.38	7.52	8.81	-
35	2.12	2.63	3.23	3.90	4.68	5.55	6.54	7.67	-
40	1.79	2.25	2.77	3.36	4.04	4.81	5.68	6.66	-
45	-	1.90	2.36	2.88	3.48	4.15	4.91	5.77	-
50	-	-	2.00	2.45	2.97	3.56	4.22	4.97	-
55	-	-	-	2.07	2.52	3.03	3.61	4.26	-
60	-	-	-	-	2.12	2.56	3.07	3.63	-
65	-	-	-	-	1.77	2.15	2.59	3.08	-

Nominal performance at to = 7.2 °C, tc = 54.4 °C

Cooling capacity	36 073	W
Power input	10 800	W
Current consumption	19.04	A
Mass flow	818	kg/h
C.O.P.	3.34	

Pressure switch settings

Maximum HP switch setting	28	bar(g)
Minimum LP switch setting	0.5	bar(g)
LP pump down setting	1.3	bar(g)

Sound power data

Sound power level	79	dB(A)
With acoustic hood	71	dB(A)

to: Evaporating temperature at dew point

tc: Condensing temperature at dew point

Rating conditions : Superheat = 11.1 K, Subcooling = 8.3 K

All performance data +/- 5%

Danfoss can accept no responsibility for possible errors in catalogues, brochures and other printed material. Danfoss reserves the right to alter its products without notice. This also applies to products already on order provided that such alternations can be made without subsequential changes being necessary in specifications already agreed. All trademarks in this material are property of the respective companies. Danfoss, the Danfoss logotype and Performer are trademarks of Danfoss A/S. All rights reserved.

