

Antistatic polyurethane hose, super-light, microbe resistant, flame-resistant

## Applications

- flexible hose/ ducting for gases and for abrasive dust, powder, fibres
- extraction unit, dedusting system, filter system, oil mist extraction
- extraction arm
- chemical industry: chemical vapours, vapour return hose at loading arm, paint steam, spray mist extraction
- explosion hazard area
- animal stall, animal shed: barn ventilation
- bus, utility vehicle, caravan/ trailer, mobile home/ camper/ RV, boat, ship/ vessel/ marine, yacht: ventilation, heating
- clean room ventilation, semiconductor production machine
- bellows, compensators

## Properties

- super-light weight
- highly flexible + compressible 3:1

- abrasion-resistant
- microbe resistant
- good resistance to oil, gasoline and chemicals
- very good low temperature flexibility
- flame-retardant according to: UL94-HB
- flame-retardant according to: DIN 4102-B1
- Permanently antistatic wall: according to ISO 8031 electrical and surface resistance  $<10^9 \Omega$  (according to NFPA 652  $10^8$ - $10^9 \Omega$ )
- in accordance with ATEX 2014/34/EU (1999/92/EC) and German TRGS 727: aspiration of combustible dust (zone 22 inside), for conveying of non-flammable liquids, for use in zone 1 and 2 (gases)
- conforms to the safety regulations of the German Wood Trade Association
- according to DIN 26057 Type 1
- conforms to RoHS guideline
- REACH according to --> Technology / Technical Information / REACH

## Temperature Range

- 40°C to 90°C
- short time to 125°C

## Design

- PROTAPE® tape hose
- spring steel wire integrated in wall
- wall: permanently antistatic premium ester-polyurethane (Pre-PUR®)
- wall thickness 0,4 mm approx.

## Delivery variants

- further diameters and lengths available on request
- transparent (standard)
- special colours: partially coloured, completely coloured
- customer-specific branding
- ID 1,5"/ 38mm 12/305mm compressed packed in poly bag (low transportation cost / risk, minimum storage size), ID315 500mm not compressed

I.D.	outer Ø	Pressure DIN 26057 (50% Elongation)	Vacuum DIN 26057 (axially fixed)	Bending Radius	Weight	Minimum Quantity	Dimensions in Stock	Production Lengths	Order No.
(in / mm)	(mm)	(bar)	(bar)	(mm)	(kg/m)	(m)	(m)	(m)	
<b>standard</b>									
1,5 / 38	46.00	0,630 (1,86)	0,245 (0,73)	27.00	0.22	-	<b>10</b>	5 15	301-0038-0000
- / 40	48.00	0,600 (1,77)	0,235 (0,66)	28.00	0.23	-	<b>5 10 15</b>	-	301-0040-0000
1,75 / 44-45	53.00	0,535 (1,58)	0,210 (0,52)	31.00	0.26	-	<b>10</b>	5 15	301-0045-0000
2 / 50-51	58.00	0,480 (1,42)	0,170 (0,85)	33.00	0.28	-	<b>5 10 15</b>	-	301-0050-0000
2,36 / 60	68.00	0,405 (1,19)	0,145 (0,59)	38.00	0.34	-	<b>5 10 15</b>	-	301-0060-0000
2,5 / 63-65	73.00	0,370 (1,09)	0,130 (0,51)	40.00	0.36	-	<b>10 15</b>	5	301-0065-0000
- / 70	78.00	0,345 (1,02)	0,125 (0,44)	43.00	0.38	-	<b>10</b>	5 15	301-0070-0000
3 / 75-76	83.00	0,325 (0,95)	0,115 (0,39)	45.00	0.41	-	<b>5 10 15</b>	-	301-0075-0000
- / 80	88.00	0,305 (0,89)	0,110 (0,34)	48.00	0.44	-	<b>5 10 15</b>	-	301-0080-0000
3,5 / 89-90	98.00	0,270 (0,79)	0,095 (0,27)	53.00	0.49	-	<b>10 15</b>	5	301-0090-0000
4 / 100-102	108.00	0,245 (0,71)	0,055 (0,30)	58.00	0.51	-	<b>5 10 15</b>	-	301-0100-0000
- / 110	118.00	0,220 (0,65)	0,050 (0,25)	63.00	0.56	-	<b>10</b>	5 15	301-0110-0000
4,5 / 114-115	123.00	0,210 (0,62)	0,050 (0,23)	66.00	0.58	-	-	5 10	301-0115-0000
4,72 / 120	128.00	0,205 (0,59)	0,045 (0,21)	68.00	0.61	-	<b>5 10 15</b>	-	301-0120-0000
5 / 125-127	133.00	0,195 (0,57)	0,045 (0,19)	71.00	0.63	-	<b>5 10 15</b>	-	301-0125-0000
- / 130	138.00	0,185 (0,55)	0,040 (0,18)	73.00	0.66	-	<b>10</b>	5 15	301-0130-0000
5,5 / 140	148.00	0,175 (0,51)	0,040 (0,15)	78.00	0.71	-	<b>5 10 15</b>	-	301-0140-0000

Overpressure and underpressure are recommended threshold operating values, products can be subjected to higher loads upon request. The bending radius is measured through the inside of the hose arch. The right to make technical modifications is reserved. All values determined at 20°C and are approx. data. Additional information at [www.norres.com/en/technology/](http://www.norres.com/en/technology/).



I.D.	outer Ø	Pressure DIN 26057 (50% Elongation)	Vacuum DIN 26057 (axially fixed)	Bending Radius	Weight	Minimum Quantity	Dimensions in Stock	Production Lengths	Order No.
(in / mm)	(mm)	(bar)	(bar)	(mm)	(kg/m)	(m)	(m)	(m)	
6 / 150-152	158.00	0,160 (0,48)	0,035 (0,13)	83.00	0.76	-	5 10 15	-	301-0150-0000
6,3 / 160	168.00	0,150 (0,45)	0,035 (0,12)	88.00	0.81	-	5 10 15	-	301-0160-0000
6,5 / 165	173.00	0,150 (0,43)	0,035 (0,11)	91.00	0.83	-	-	5 10 15	301-0165-0000
7 / 178-180	188.00	0,135 (0,40)	0,030 (0,09)	98.00	0.90	-	5 10 15	-	301-0180-0000
8 / 200-203	208.00	0,120 (0,36)	0,025 (0,11)	108.00	1.03	-	5 10 15	-	301-0200-0000
- / 225	234.00	0,110 (0,32)	0,020 (0,08)	122.00	1.16	-	10	5 15	301-0225-0000
- / 250	259.00	0,100 (0,29)	0,020 (0,06)	136.00	1.28	-	5 10	-	301-0250-0000
10 / 254	263.00	0,095 (0,28)	0,020 (0,06)	144.00	1.30	-	10	5	301-0254-0000
11 / 280	289.00	0,085 (0,26)	0,020 (0,05)	149.00	1.43	-	10	5	301-0280-0000
- / 300	309.00	0,080 (0,24)	0,015 (0,04)	159.00	1.70	-	5 10	-	301-0300-0000
12 / 305	315.00	0,080 (0,23)	0,015 (0,04)	163.00	1.73	-	10	5	301-0305-0000
- / 315	325.00	0,075 (0,23)	0,015 (0,04)	168.00	1.79	-	10	5	301-0315-0000
- / 350	360.00	0,070 (0,20)	0,015 (0,03)	185.00	2.00	-	10	5	301-0350-0000
14 / 356	366.00	0,070 (0,20)	0,015 (0,03)	190.00	2.10	-	-	5 10	301-0356-0000
- / 400	410.00	0,060 (0,18)	0,015 (0,02)	210.00	2.26	-	10	5	301-0400-0000
- / 500	510.00	0,050 (0,14)	0,010 (0,01)	260.00	2.78	-	10	5	301-0500-0000

**neutral imprint: <ID> antistatic + microbe resistant <neutral batch no.> / no cutting**

1,5 / 38	46.00	0,630 (1,86)	0,245 (0,73)	27.00	0.22	-	10	-	301-0038-0007
- / 40	48.00	0,600 (1,77)	0,235 (0,66)	28.00	0.23	-	10	-	301-0040-0007
2 / 50-51	58.00	0,480 (1,42)	0,170 (0,85)	33.00	0.28	-	10	-	301-0050-0007
2,36 / 60	68.00	0,405 (1,19)	0,145 (0,59)	38.00	0.34	-	10	-	301-0060-0007
2,5 / 63-65	73.00	0,370 (1,09)	0,130 (0,51)	40.00	0.36	-	10	-	301-0065-0007
- / 70	78.00	0,345 (1,02)	0,125 (0,44)	43.00	0.38	-	10	-	301-0070-0007
3 / 75-76	83.00	0,325 (0,95)	0,115 (0,39)	45.00	0.41	-	10	-	301-0075-0007
- / 80	88.00	0,305 (0,89)	0,110 (0,34)	48.00	0.44	-	10	-	301-0080-0007
4 / 100-102	108.00	0,245 (0,71)	0,055 (0,30)	58.00	0.51	-	10	-	301-0100-0007
4,72 / 120	128.00	0,205 (0,59)	0,045 (0,21)	68.00	0.61	-	10	-	301-0120-0007
5 / 125-127	133.00	0,195 (0,57)	0,045 (0,19)	71.00	0.63	-	10	-	301-0125-0007
5,5 / 140	148.00	0,175 (0,51)	0,040 (0,15)	78.00	0.71	-	10	-	301-0140-0007
6 / 150-152	158.00	0,160 (0,48)	0,035 (0,13)	83.00	0.76	-	10	-	301-0150-0007
6,3 / 160	168.00	0,150 (0,45)	0,035 (0,12)	88.00	0.81	-	10	-	301-0160-0007
7 / 178-180	188.00	0,135 (0,40)	0,030 (0,09)	98.00	0.90	-	10	-	301-0180-0007
8 / 200-203	208.00	0,120 (0,36)	0,025 (0,11)	108.00	1.03	-	10	-	301-0200-0007
- / 225	234.00	0,110 (0,32)	0,020 (0,08)	122.00	1.16	-	10	-	301-0225-0007
- / 250	259.00	0,100 (0,29)	0,020 (0,06)	136.00	1.28	-	10	-	301-0250-0007
- / 300	309.00	0,080 (0,24)	0,015 (0,04)	159.00	1.70	-	10	-	301-0300-0007

**more compressed packaging approx. 5:1, neutral imprint, no cutting, not flame-resistant acc. to DIN 4102-B1, not acc. to TRGS 727 and ATEX 2014/34/EU (1999/92/EC)-doesn't fulfil the safety regulations of the German Wood Trade Association**

- / 40	48.00	0,600 (1,77)	0,235 (0,66)	28.00	0.23	150	-	-	301-0040-2030
2 / 50-51	58.00	0,480 (1,42)	0,170 (0,85)	33.00	0.28	150	-	-	301-0050-2030
2,36 / 60	68.00	0,405 (1,19)	0,145 (0,59)	38.00	0.34	150	-	-	301-0060-2030
2,5 / 63-65	73.00	0,370 (1,09)	0,130 (0,51)	40.00	0.36	150	-	-	301-0065-2030
3 / 75-76	83.00	0,325 (0,95)	0,115 (0,39)	45.00	0.41	100	-	-	301-0075-2030
- / 80	88.00	0,305 (0,89)	0,110 (0,34)	48.00	0.44	100	-	-	301-0080-2030
4 / 100-102	108.00	0,245 (0,71)	0,055 (0,30)	58.00	0.51	100	-	-	301-0100-2030
4,72 / 120	128.00	0,205 (0,59)	0,045 (0,21)	68.00	0.61	100	-	-	301-0120-2030
5 / 125-127	133.00	0,195 (0,57)	0,045 (0,19)	71.00	0.63	100	-	-	301-0125-2030
5,5 / 140	148.00	0,175 (0,51)	0,040 (0,15)	78.00	0.71	80	-	-	301-0140-2030
6 / 150-152	158.00	0,160 (0,48)	0,035 (0,13)	83.00	0.76	80	-	-	301-0150-2030
6,3 / 160	168.00	0,150 (0,45)	0,035 (0,12)	88.00	0.81	80	-	-	301-0160-2030
7 / 178-180	188.00	0,135 (0,40)	0,030 (0,09)	98.00	0.90	80	-	-	301-0180-2030

Overpressure and underpressure are recommended threshold operating values, products can be subjected to higher loads upon request. The bending radius is measured through the inside of the hose arch. The right to make technical modifications is reserved. All values determined at 20°C and are approx. data. Additional information at [www.norres.com/en/technology/](http://www.norres.com/en/technology/).

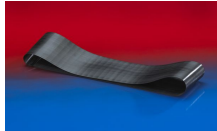


I.D.	outer Ø	Pressure DIN 26057 (50% Elongation)	Vacuum DIN 26057 (axially fixed)	Bending Radius	Weight	Minimum Quantity	Dimensions in Stock	Production Lengths	Order No.
(in / mm)	(mm)	(bar)	(bar)	(mm)	(kg/m)	(m)	(m)	(m)	
8 / 200-203	208.00	0,120 (0,36)	0,025 (0,11)	108.00	1.03	60	-	-	301-0200-2030
- / 250	259.00	0,100 (0,29)	0,020 (0,06)	136.00	1.28	50	-	-	301-0250-2030
- / 300	309.00	0,080 (0,24)	0,015 (0,04)	159.00	1.70	40	-	-	301-0300-2030

## Accessories



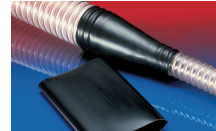
CLAMP 217



CONNECT 228



CLAMP 212



CONNECT 223



CONNECT 270-271



CLAMP 210 BRIDGE  
CLAMP



CLAMP 213