

Food hose and pharmaceutical hose, light

Applications

- flexible hose/ ducting for gases and for abrasive dust, powder, fibres
- food industry, pharmaceutical industry: foodstuff, pharmaceutical
- conveying of dry foods e.g. rice, cereals, sugar, milk powder, powders, coffee, tea, grains, flour, frozen foods
- mixer, dryer, packaging machine, bulk-bag (big bag)-charging and discharging, mill
- extraction arm
- clean room ventilation, semiconductor production machine
- medical equipment/ medical technology, healthcare sector: cable protection conduit, air supply hose, extraction hose

Properties

- lightweight and reinforced
- highly flexible + compressible 3:1

- abrasion-resistant
- Approved by an independent testing laboratory for the complete hose acc. to EU-Directive 10/2011, EC 1935/2004 and EU 2015/174, food grade polyurethane, complies with: FDA 21 CFR 177.2600
- Approval acc. to EU-Directive 10/2011 (food simulants A, B, C or E and D2) and EC 1935/2004
- odourless and tasteless
- microbe and hydrolysis resistant
- good resistance to oil, gasoline and chemicals
- very good low temperature flexibility
- manufacturing process acc. GMP EC 2023/2006
- conforms to RoHS guideline
- REACH according to --> Technology / Technical Information / REACH

Temperature Range

- 40 °C to 90 °C
- short time to 125 °C

Design

- PROTAPE® tape hose
- spring steel wire integrated in wall
- wall: special premium ether-polyurethane (Pre-PUR®)
- wall thickness 0,6 mm approx.

Delivery variants

- customer-specific branding
- further diameters and lengths available on request
- transparent (standard)

I.D.	outer Ø	Pressure DIN 26057 (50% Elongation)	Vacuum DIN 26057 (axially fixed)	Bending Radius	Weight	Dimensions in Stock	Production Lengths	Order No.
(in / mm)	(mm)	(bar)	(bar)	(mm)	(kg/m)	(m)	(m)	
1 / 25	32.00	1,605 (4,18)	0,540 (1,00)	20.00	0.15	10	5 15	330-0025-0000
- / 30	37.00	1,350 (3,50)	0,450 (1,00)	22.00	0.18	10 15	5	330-0030-0000
1,25 / 32	39.00	1,265 (3,29)	0,420 (1,00)	23.00	0.19	10	5 15	330-0032-0000
1,5 / 38	45.00	1,075 (2,78)	0,355 (0,77)	26.00	0.22	10	5 15	330-0038-0000
- / 40	47.00	1,020 (2,64)	0,335 (0,69)	27.00	0.23	10 15	5	330-0040-0000
1,75 / 44-45	52.00	0,910 (2,35)	0,300 (0,55)	30.00	0.26	-	10 15	330-0045-0000
2 / 50-51	58.00	0,820 (2,12)	0,220 (0,87)	33.00	0.37	10 15	5	330-0050-0000
2,36 / 60	68.00	0,685 (1,77)	0,180 (0,61)	38.00	0.43	10 15	5	330-0060-0000
2,5 / 63-65	73.00	0,635 (1,64)	0,165 (0,52)	41.00	0.46	10	15	330-0065-0000
- / 70	78.00	0,590 (1,52)	0,155 (0,45)	43.00	0.50	10	5 15	330-0070-0000
3 / 75-76	83.00	0,550 (1,42)	0,145 (0,40)	46.00	0.53	10	5 15	330-0075-0000
- / 80	88.00	0,515 (1,33)	0,135 (0,35)	48.00	0.57	10 15	5	330-0080-0000
3,5 / 89-90	98.00	0,460 (1,19)	0,120 (0,28)	53.00	0.63	10	5 15	330-0090-0000
4 / 100-102	108.00	0,415 (1,07)	0,080 (0,31)	58.00	0.67	10 15	5	330-0100-0000
- / 110	118.00	0,375 (0,97)	0,070 (0,26)	63.00	0.73	10	5 15	330-0110-0000
4,5 / 114-115	123.00	0,360 (0,93)	0,070 (0,24)	66.00	0.76	-	5 10 15	330-0115-0000
4,72 / 120	128.00	0,345 (0,89)	0,065 (0,22)	68.00	0.79	10	5 15	330-0120-0000
5 / 125-127	133.00	0,335 (0,86)	0,065 (0,20)	71.00	0.83	10	5 15	330-0125-0000
- / 130	138.00	0,320 (0,82)	0,060 (0,19)	73.00	0.85	10	5 15	330-0130-0000
5,5 / 140	148.00	0,295 (0,76)	0,055 (0,16)	78.00	0.92	10	5 15	330-0140-0000

Overpressure and underpressure are recommended threshold operating values, products can be subjected to higher loads upon request. The bending radius is measured through the inside of the hose arch. The right to make technical modifications is reserved. All values determined at 20 °C and are approx. data. Additional information at www.norres.com/en/technology/.

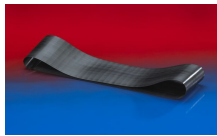


I.D.	outer Ø	Pressure DIN 26057 (50% Elongation)	Vacuum DIN 26057 (axially fixed)	Bending Radius	Weight	Dimensions in Stock	Production Lengths	Order No.
(in / mm)	(mm)	(bar)	(bar)	(mm)	(kg/m)	(m)	(m)	
6 / 150-152	158.00	0,275 (0,71)	0,055 (0,14)	83.00	0.99	10 15	5	330-0150-0000
6,3 / 160	168.00	0,260 (0,67)	0,050 (0,12)	88.00	1.04	10	5 15	330-0160-0000
- / 170	178.00	0,245 (0,63)	0,045 (0,11)	93.00	1.11	-	5 10	330-0170-0000
- / 175	183.00	0,240 (0,61)	0,045 (0,10)	96.00	1.14	-	5 10	330-0175-0000
7 / 178-180	188.00	0,230 (0,59)	0,045 (0,10)	98.00	1.17	10	5 15	330-0180-0000
8 / 200-203	208.00	0,210 (0,54)	0,030 (0,11)	108.00	1.33	10	5 15	330-0200-0000
- / 225	233.00	0,185 (0,48)	0,025 (0,09)	121.00	1.47	-	5 10 15	330-0225-0000
- / 250	258.00	0,165 (0,43)	0,025 (0,07)	133.00	1.63	10	5 15	330-0250-0000
10 / 254	262.00	0,165 (0,42)	0,025 (0,06)	135.00	1.66	-	5 10	330-0254-0000
11 / 280	288.00	0,150 (0,38)	0,020 (0,05)	148.00	1.82	-	5 10	330-0280-0000
- / 300	309.00	0,140 (0,36)	0,020 (0,05)	159.00	2.13	10	5 15	330-0300-0000
- / 315	324.00	0,135 (0,34)	0,020 (0,05)	167.00	2.23	-	5 10	330-0315-0000
- / 325	334.00	0,130 (0,33)	0,020 (0,04)	172.00	2.30	-	5 10	330-0325-0000
- / 350	359.00	0,120 (0,31)	0,020 (0,04)	184.00	2.48	10	5	330-0350-0000
- / 400	409.00	0,105 (0,27)	0,015 (0,02)	209.00	2.83	10	5	330-0400-0000
- / 450	459.00	0,095 (0,24)	0,015 (0,02)	234.00	3.18	-	5 10	330-0450-0000

Accessories



CLAMP 212



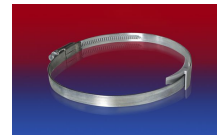
CONNECT 228



CLAMP 213



CONNECT 223



CLAMP 210 BRIDGE CLAMP



CLAMP 217



CONNECT 270-271

Overpressure and underpressure are recommended threshold operating values, products can be subjected to higher loads upon request. The bending radius is measured through the inside of the hose arch. The right to make technical modifications is reserved. All values determined at 20°C and are approx. data. Additional information at www.norres.com/en/technology/.