



## Power Generation Engines - 6.4 up to 15.000 kW

LE/SL/SQ/SS/SK-series

SB/SA/SH/SR-series

SU/KU/GSR-series

- Dependable and durable in power generation
- Engines for continuous, prime and stand-by operation
- Available in high and medium speed
- Wide range of outputs
- Available as gas and diesel solution
- Suitable for cogeneration of energy



## Advanced technology

Your partner in reliable, durable engines for all power generation applications.



### **Global Reach**

As a globally operating company with subsidiaries in all parts of the world, our goal is to help you wherever you need it. Our engines are made to perform even under the toughest conditions and are known for their durability and reliability.

### **Reliable engines**

The Mitsubishi diesel and gas engine line up for power generation comprises of engines from 5 kW to 15000 kW\*. These engines can be found in a multitude of applications including generator sets for stand-by or emergency power, prime power for peak shaving or base load power plants. We have a relentless focus on product quality and production management which makes us a reliable partner for our OEM's. The engines are built to last and with ease of maintenance in mind, they have easy access points to key components.

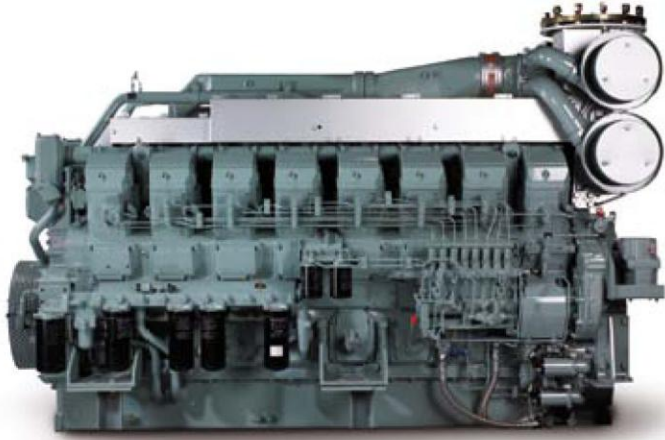
### **Application engineering**

A dedicated application engineer with vast knowledge of our engines and your needs, will offer support in your design process from beginning to end to help choose and implement the right engine. We believe in personal attention in order to find the most suitable solution for you.

### **Logistic**

For OEM's logistic efficiency is vital. We work with our OEM's in various ways to find the best possible logistic setups in order to ensure a smooth and cost efficient production flow fitting your personal needs.

\* More information on engines above 5880 kW available upon request.



*S16R-PTA: High speed diesel engine available in all ratings including continuous operation*

**Power Generation Engines: 6.4 up to 5880 kW**

	10 kW	50 kW	100 kW	1,000 kW	10,000 kW
6	LE-SERIES	18			
9	SL-SERIES	29			
19	SQ-SERIES	25			
28	SS-SERIES	46			
42	SK-SERIES	90			
275	SB-SERIES	450			
330	SA-SERIES	910			
800	SH-SERIES	1190			
445	SR-SERIES	2170			
1090	SU-SERIES	3790			
		3760	KU-SERIES	5880	
315	GSR-SERIES	1565			
		3650	KU-SERIES	5750	

MODEL RANGE

UNIT: kW

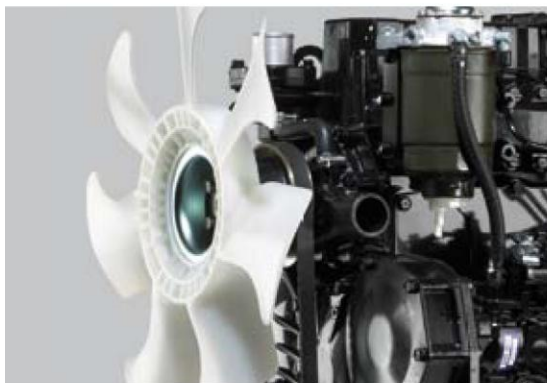
■ Diesel engines ■ Gas engines



# SS- & SK-series

		S4S	S4S-DT	S4K-(DT)	S6K-(DT)	
<b>Type</b>		4-cycle, water-cooled, diesel engine	4-cycle, water-cooled, diesel engine	4-cycle, water-cooled, diesel engine	4-cycle, water-cooled, diesel engine	
<b>Aspiration</b>		Natural-aspirated	Turbocharged	NA (TC)	NA (TC)	
<b>Number of cylinders</b>		4	4	4	6	
<b>Bore and stroke mm</b>		94 x120	94 x 120	102 x 130	102 x 130	
<b>Displacement cc</b>		3331	3331	4249	6373	
<b>Combustion system</b>		Swirl chamber	Direct injection	Direct injection	Direct injection	
<b>Fuel</b>		Diesel fuel (ASTM No. 2-D)	Diesel fuel (ASTM No. 2-D)	Diesel fuel (ASTM No. 2-D)	Diesel fuel (ASTM No. 2-D)	
<b>Dry weight kg</b>		245	250	350	475	
<b>Generator output (ISO3046, gross) kW</b>	50 Hz (1500 rpm)	St-by	31,6	39,0	46.7 (59.7)	70.5 (89.7)
		Prime	28,7	37,5	42.7 (54.7)	64.0 (81.6)
	60 Hz (1800 rpm)	St-by	36,5	46,2	—	—
		Prime	34,2	44,5	—	—
	50 Hz (3000 rpm)	St-by	—	—	—	—
		Prime	—	—	—	—
	60 Hz (3600 rpm)	St-by	—	—	—	—
		Prime	—	—	—	—
<b>Emission compliance*</b>		EU Stage 3A	EU Stage 3A	—	—	
<b>Dimensions mm</b>	L x W x H	781 x 593 x 710	781 x 593 x 821	894 x 741 x 929	1163 x 741 x 976	

\* not applicable for all outputs



Fan



SS-series