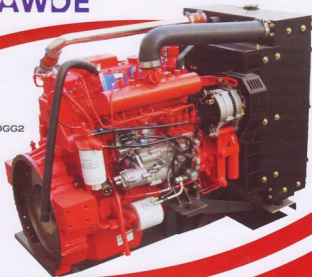




FAWDE

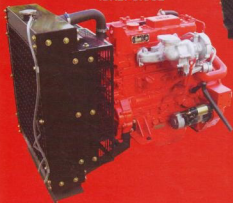
4DX23-120GG2



CA6110/125-15GG2



4DX21-81GG2



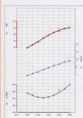


FAWDE

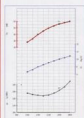
FAWDE Engines For Pump Technical Data

Engine model	4DW92-68GG2	4DX21-81GG2	4DX22-110GG2	4DX23-120GG2	CA6110/125-15GG2
Type	In-line, water cooling, 4-stroke				
Number of cylinders	4				
Air intake type	Turbocharged	Natural	Turbocharged	Turbo&intercool	Natural
Governor mode	Mechanical				
BorexStroke(mm.)	90x100	102x118			110x125
Compression ratio	17.1				
Rated speed(rpm)	2900				
Displacement(L)	2.54	3.86			7.13
Rated power(kW)	50	60	80	86	110
Fan consumption (kW)	4	6	8	8	12
Net power(kW)	46	54	72	78	98
Pump shaft power (kW)	40	48	67	72	90
Fuel consumption(g/kwh)	230	230	230	220	240
Effective mean pressure at	0.81	0.64	0.85	0.92	0.64
Oil consumption(L/h)	0.08	0.09	0.12	0.12	0.16
Steady state speed regulation(%)	< 10	< 10	< 10	< 10	< 10
Oil capacity including filter(L)	8	12.5	13	13	20
Coolant capacity include radiator (L)	9	12	13	13	26
Emission compliant	Stage II				
The flywheel shell interface	SAE4	SAE3			SAE2
	Flywheel for 7.5" flexible coupling	Flywheel for 11.5" flexible coupling			As shown in the figure
Dry weight of base configuration(kg)	252	320	330	340	560
Dry weight of standard configuration(kg)	290	365	405	415	640
Overall dimension(base)(mm)	760*590*680	850*680*785	850*705*790	860*720*810	1245*710*1025
Overall dimension(standard)(mm)	1075*620*760	1090*680*840	1250*735*900	1280*735*900	1475*710*1125
Alternator (V)	DC14V			DC28V	
Starter motor (V)	DC12V			DC24V	
Standard configuration(add on the base)					
Intake and exhaust system : Air filter and connecting pipes;Connecting flang of exhaust pipe					
Cooling system: Radiator with connecting pipes;Fan guard;Belt guard					

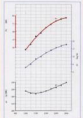
4DW92-68GG2 POWER-CL180



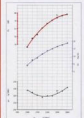
4DX21-81GG2 POWER-CL180



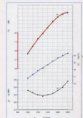
4DX22-110GG2 POWER-CL180



4DX23-120GG2 POWER-CL180



CA6110/125-15GG2 POWER-CL180



NOTE :

ABOVE SPECIFICATIONS ARE SUBJECT TO CHANGE WITHOUT NOTICE