

# Additel 761

## Automated Pressure Calibrators



### Selection Guide

Model Features	761-LLP	761-D	761-L	761-M	761-H
Pressure Range	-25 to 25 mbar (-10 to 10 inH <sub>2</sub> O)	-0.95 to 1 bar (-13.5 to 15 psi)	-0.95 to 7 bar (-13.5 to 100 psi)	-0.90 to 25 bar (-13 to 375 psi)	-0.90 to 40 bar (-13 to 600 psi)
Pressure Module 1	-2.5 to 2.5 mbar (-1 to 1 inH <sub>2</sub> O)	-25 to 25 mbar (-10 to 10 inH <sub>2</sub> O)	-0.95 to 2.5 bar (-13.5 to 35 psi)	-0.9 to 2.5 bar (-13 to 35 psi)	-0.9 to 2.5 bar (-13 to 35 psi)
Pressure Module 2	-25 to 25 mbar (-10 to 10 inH <sub>2</sub> O)	-0.95 to 1 bar (-13.5 to 15 psi)	0 to 7 bar (0 to 100 psi)	0 to 25 bar (0 to 375 psi)	0 to 40 bar (0 to 600 psi)
Differential Pressure	●	●			
Gauge Pressure	●	●	●	●	●
Absolute Pressure					
Barometric Pressure					
Temperature Compensated	●	●	●	●	●
Built-in Electrical Pump	●	●	●	●	●
Built-in Filter	●	●	●	●	●
Built-in Liquid Trap	●	●	●	●	●
Source 0 to 22mA	●	●	●	●	●
Measure mA or V	●	●	●	●	●
Measure external pressure module	●	●	●	●	●
24V Loop power	●	●	●	●	●
Pressure switch test	●	●	●	●	●
HART Communication	●	●	●	●	●
Documenting	●	●	●	●	●

# Additel 761

## Automated Pressure Calibrators



- Fully automated pressure calibrator with built-in pressure generator / controller to as high as 600 psi (40 bar) or as low as 0.01 Pa (0.00004 inH<sub>2</sub>O)
- 0.02%FS accuracy
- Dual pressure modules
- Built-in filter and liquid trap with venting system prevents contamination of the calibrator
- Portable (12.4 lb)

### OVERVIEW

With a built-in high performance electronic pump and precision pressure controller, the 761 series portable automated pressure calibrators provide a turnkey solution for calibration of gauges, transmitters, and switches both in the field and in the laboratory. In a portable package, this calibrator can automatically generate pressures from 90% vacuum to 600 psi (40 bar) with 0.005% FS pressure control stability and 0.02% FS accuracy. To improve the calibrator accuracy, two pressure modules with differing ranges are built-in and integrated with the internal pump and controller.

The 761-LLP is specially designed for low pressure calibration, and pressures can be set to as low as 0.01 Pa (0.00004 inH<sub>2</sub>O) with a control stability better than 0.05 Pa (0.0002 inH<sub>2</sub>O).

With optional external pressure modules (160A series), the 761 can measure pressures up to 10,000 psi (700 bar) with 0.02%FS accuracy. In addition to the pressure generation, control, and measurement capabilities, the 761 also features HART communication capability, supplies 24V loop power, and reads the current or voltage produced by the pressure transducers. The 761 is a state of the art automated pressure calibrator which brings automated pressure calibration to the field.



Metrology Made Simple

## FEATURES

Pressure Range	Pressure generated by built-in pump and controlled automatically from 90% vacuum to 600 psi (40 bar)
	Pressure measured with external pressure modules (160A series) to 10,000 psi (700 bar)
Accuracy	0.02%FS
	0.05%FS (ADT761-LLP)
Control Stability	<0.005%FS
	ADT761-LLP: < 0.05 Pa (0.0002 inH <sub>2</sub> O)
Contamination Prevention System	Built-in filter and liquid trap with venting system prevent contamination of the calibrator.
	Solid particles can be blocked by built-in filter A small amount of liquid can be collected by the built-in liquid trap.
	Both solid particles and liquid can be blown out through the venting system.
Automation and Test Program	Fully Automated pressure calibration
	Task preset and auto run
	Auto step
Easy to Use	User friendly interface
	Intuitive icon driven menu structure
Source and Measuring Electrical Signals	Measure mA with 0.01% RD + 1.5 $\mu$ A accuracy
	Measure V with 0.01% RD + 1.5 mV accuracy
	Source/sink 0 to 22 mA current
	24 VDC loop power supplied to pressure transmitter during test
	Automated switch test
Misuse Protection	Up to 30 V misuse protection on any two sockets
Display	7" LCD color screen (800 X 480)
Documenting and On-demand Logging	Task management capability
	Internal memory stores 200 tasks
	Download tasks and upload results
	900 snapshots
HART Communication Capability	Support HART instrumentation
Pressure Output Rate	2.4 liters/minute
Rechargeable Battery	Rechargeable battery with up to 8 hours operation between charges

Leak Testing	Apply leak test to an external pressure system to determine the magnitude of pressure variations due to leaks
Pipeline Protection	Special design the pipeline layout to avoid possible blockage and leakage
Portable	Only 12.4 lb
Multi Lingual Interface	English, German, French, Italian, Spanish, Portuguese, Simplified Chinese (Traditional Chinese, Japanese and Russian are available per request)
ISO17025	ISO 17025 accredited calibration with data (included)



**SPECIFICATIONS**

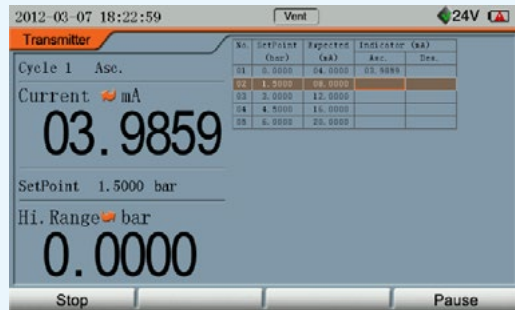
<b>Control Stability</b>	<0.005%FS, FS specification applies to the span of the range <b>ADT761-LLP:</b> < 0.05 Pa (0.0002 inH <sub>2</sub> O)
<b>Pressure Connections</b>	<b>ADT761-L/M/H</b> 1. One ADT100-761 Hose Test Kit with quick connector 1/8 BSP Female on calibrator 2. Two 1/4NPT(or 1/2NPT, 1/4BSP, 1/2BSP, M20×1.5) female hand-tight connectors on the external pressure manifold <b>ADT761-LLP:</b> Stainless steel hose barb fitting
<b>External Pressure Module Connection</b>	Accepts Intelligent Pressure Module
<b>Electrical Connection</b>	0.156 inch (Ø4mm) banana sockets
<b>Documenting and On-demand Logging</b>	Task management capability Internal memory stores 200 tasks Download tasks and upload results
<b>Display</b>	7" LCD color screen (800 × 480) Display rate: 5 readings per second Resolution: 4, 5 or 6 digit, user selectable
<b>Pressure Units</b>	Pa, kPa, MPa, psi, bar, mbar, inH <sub>2</sub> O@4°C, mmH <sub>2</sub> O@4°C, inH <sub>2</sub> O@20°C, mmH <sub>2</sub> O@20°C, inHg@0°C, mmHg@0°C, kgf/cm <sup>2</sup>
<b>Pump Life</b>	>100,000 cycles
<b>Power</b>	Battery: Rechargeable Li-ion Polymer battery (included) Li-Battery working time: ~8 hours Recharge time: ~3 hours External Power: 110/220V Power adapter (DC 27 V) (Included)
<b>Environmental Specification</b>	Operating temperature: 32°F to 122°F (0°C to 50°C) Compensated Temperature: 32°F to 122°F (0°C to 50°C) Storage temperature: -20°C to 60°C (-4°F to 120°F) Humidity: <90%, non-condensing
<b>European Compliance</b>	CE Marked
<b>Communication</b>	RS232 (DB9/F, environmentally sealed) Baud rate: 2400, 4800, 9600, 19200, 38400, 57600, 115200 Data length: 7 Bits, 8 Bits Stop bit: 1 Bit, 2 Bits Address: from 1 to 121
<b>Dimension</b>	11.65 X 7.32 X 7.09 in (296 X186 X180 mm)
<b>Weight</b>	12.4 to 16.3 lb (5.6 to 7.4 kg)
<b>Warranty</b>	18 months



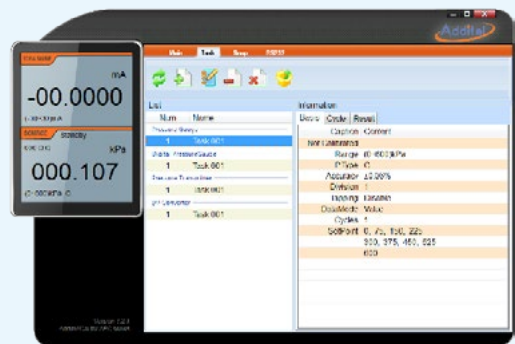
Task Manual



Built-in User's Manual



Pressure gauge / transmitter / switch calibration



Documenting

## Additel 761 Automated Pressure Calibrators



### SPECIFICATIONS

#### ■ Pressure Ranges

Type	Model	Pressure Range	Pressure Module 1		Pressure Module 2	
			Range	Accuracy <sup>[1]</sup>	Range	Accuracy <sup>[1]</sup>
Low/Differential Pressure	ADT761-LLP	-25 to 25 mbar (-10 to 10 inH <sub>2</sub> O)	-2.5 to 2.5 mbar (-1 to 1 inH <sub>2</sub> O)	0.05%FS <sup>[2]</sup>	-25 to 25 mbar (-10 to 10 inH <sub>2</sub> O)	0.05%FS <sup>[2]</sup>
	ADT761-D	-0.95 to 1 bar (-13.5 to 15 psi)	-25 to 25 mbar (-10 to 10 inH <sub>2</sub> O)	0.05%FS <sup>[2]</sup>	-0.95 to 1 bar (-13.5 to 15 psi)	0.02%FS
Gauge Pressure	ADT761-L	-0.95 to 7 bar (-13.5 to 100 psi)	-0.95 to 2.5 bar (-13.5 to 35 psi)	0.02%FS	0 to 7 bar (0 to 100 psi)	0.02%FS
	ADT761-M	-0.90 to 25 bar (-13 to 375 psi)	-0.9 to 2.5 bar (-13 to 35 psi)	0.02%FS	0 to 25 bar (0 to 375 psi)	0.02%FS
	ADT761-H	-0.90 to 40 bar (-13 to 600 psi)	-0.9 to 2.5 bar (-13 to 35 psi)	0.02%FS	0 to 40 bar (0 to 600 psi)	0.02%FS

[1] One year accuracy (including 1 year stability). FS specification applies to the span of the module range.

[2] 0.05% FS accuracy (including 6 months stability). One year accuracy is 0.05% FS calibration accuracy combined with 0.05% FS one year stability.

\* Additel 761 calibrators support 160A series intelligent digital pressure modules that are available for gauge, vacuum and absolute pressure from -15 psi to 10,000 psi (-1 bar to 700 bar). Accuracy from 0.02%FS includes operation over 14°F to 122°F (-10°C to 50°C), one year stability and calibration uncertainty. For detailed specification refer to 160A series pressure modules datasheet.

#### ■ Electrical Measurement and Source Accuracy

	Range	Resolution	Accuracy
Voltage Measurement	±30.0000V	0.1 mV	±(0.01%RD + 1.5 mV)
Current Measurement	±30.0000mA	0.1 µA	±(0.01%RD + 1.5 µA)
Current Source	0.000 to 22.000mA	1 µA	±(0.02%RD + 2.2 µA)
Switch Test	If the switch has detective Voltage, the range is from 3 V to 24 V		
DC 24V output	24 V ± 0.5 V, max: 50 mA		

### ORDERING INFORMATION

#### ■ Model Number

ADT761 — L — N

Pressure range:  
See pressure range  
table.

Pressure port type on External  
Pressure Manifold:

N - 1/4NPT female  
N2 - 1/2NPT female  
B - 1/4BSP female  
B2 - 1/2BSP female  
M - M20X1.5 female



# Additel 761

## Automated Pressure Calibrators



### ORDERING INFORMATION

<b>Accessories (included)</b>		
External Pressure Manifold (ADT106) <i>(Except 761-LLP)</i>	1 pc	
<b>9818</b> 110 V/220 V external Power adapter	1 pc	
<b>9723</b> Chargeable Li-ion battery	1 pc	
<b>9022</b> Test Leads for calibrator	2 sets (4 pcs)	
<b>9020</b> Short circuit cable	1 set (2 pcs)	
<b>9907</b> Carrying case for 761 calibrator and accessory	1 pc	
<b>9060</b> Pressure module connection cable	1 pc	
<b>9240</b> DP gauge holder, rubber <i>(Only for ADT761-LLP)</i>	1 pc	
<b>ADT100-761</b> <i>(Except 761-LLP)</i>	1 pc + 3 pcs adapters	
O-rings <i>(Except 761-LLP)</i>	20 pcs	
Manual	1 pc	
Allen wrench	1 set	
ADT100-761Hose <i>(Except 761-LLP: 2 pcs)</i>	1 pcs	
ISO 17025 accredited calibration certificate	1 pc	

\* Additel/Land software could be downloaded for free at [www.additel.com](http://www.additel.com)

<b>Optional Accessories</b>		
Model Number	Description	Picture
ADT100-761-N4	Hose Test Kit, 5 feet flexible hose, 0.156" (Ø4mm) tube to 1/4NPT hand-tight quick connector	
ADT100-761-B4	Hose Test Kit, 5 feet flexible hose, 0.156" (Ø4mm) tube to 1/4BSP hand-tight quick connector	
ADT106-N	External Pressure Manifold (with two 1/4NPT hand-tight quick connectors)	
ADT106-B	External Pressure Manifold (with two 1/4BSP hand-tight quick connectors)	
ADT106-M	External Pressure Manifold (with two M20X1.5 hand-tight quick connectors)	
ADT160A	See pg. 27 for more info; connection cable sold separately	
9050	USB to RS232 (DB9/M) Adapter	
9060	Pressure module connection cable	
9510	Additel/Cal task management software	
ADT100-761Hose	ADT761 hose, 5 feet (polyamide, 2,390 psi burst)	