

PCH-100

Portable glycosylated hemoglobin analyzer

- VOICE REPORTING
- USER-FRIENDLY OPERATION
- FAST AND ACCURATE RESULTS



Application scenarios:



Primary health
care institution



Private clinic



Clinical laboratory



Chain pharmacy

Sinocare

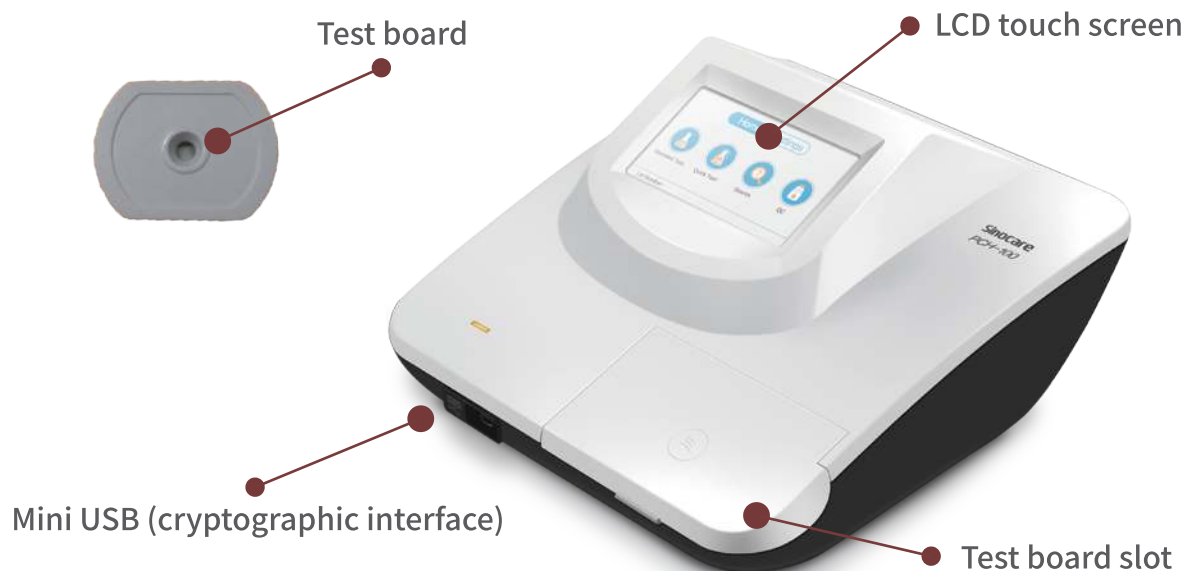
• caring for love

PCH-100

Portable glycated hemoglobin analyzer

Product features

- ① **Rapid detection**
Testing time \leq 3.5 min.
- ② **User-friendly operation**
Provide voice prompt
- ③ **Adjustment-free**
Code chip has built-in calibration curve.
- ④ **Reliable results**
Boric acid affinity chromatography is currently standardized and has good correlation with HPLC
- ⑤ **Data inquiry**
Auto-print test results,
compatible with laboratory information system (LIS)
- ⑥ **Data storage**
Store 1000 testing results and 200 QC results



PCH-100

Portable glycated hemoglobin analyzer

Operation steps



1. Switch on the instrument, insert the code chip



5. Mix it again for 5 seconds, and squeeze the bubble from R1 suction cup



2. Collect capillary whole blood



6. Add one drop of the mixture vertically into the test board



3. Insert sampling capillary into R1 suction cup



7. Add one drop of R2 reagent vertically into the test board



4. Fully mix it for 5 seconds, and incubate 2 minutes



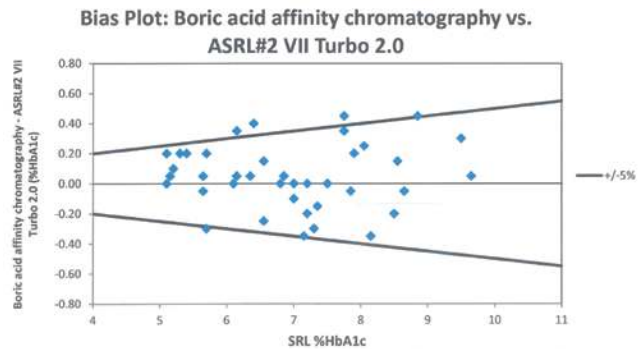
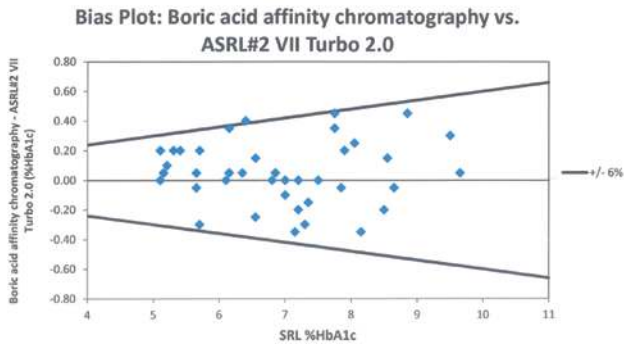
8. Place the test board into the instrument, and obtain HbA1c results

PCH-100

Portable glycated hemoglobin analyzer

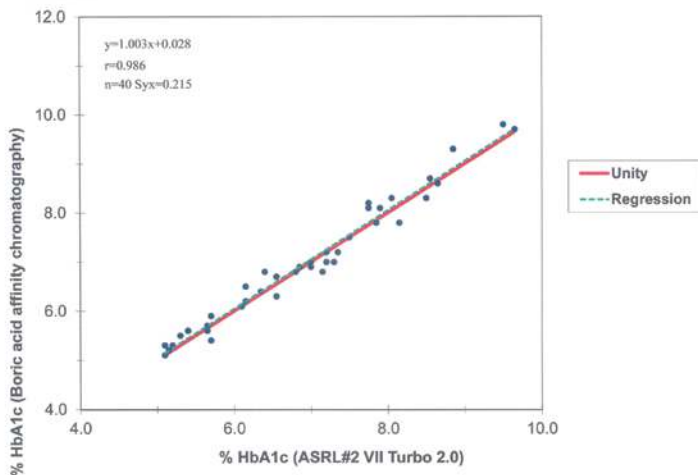
NGSP Certificate of Traceability

NGSP Method Comparison Evaluation Report



Scatter Plot

Changsha Sinocare Inc. Boric acid affinity chromatography



Performance Parameter

Measurement range: 4.0%-15.0% HbA1c;

Linearity: Linear coefficient of correlation (r) ≥ 0.98 ;

Accuracy: For 4.0%-6.0% HbA1c, absolute deviation does not exceed $\pm 0.6\%$ HbA1c;

For 6.1%-15.0% HbA1c, relative deviation does not exceed $\pm 10\%$;

Precision: Coefficient of variation (CV) $\leq 8\%$.



Customer Service Hotline
400 085 0036

Sinocare Inc.

NO.265, Guyuan Road, Hi-tech Zone, Changsha, Hunan Province 410205, People's Republic of China.

TEL: +86-731-89935581/89935582 FAX: +86-731-89825189

Email: info@sinocare.com

This product is used only as the continuous glucose monitoring tool, the test results can not be used as the basis for clinical diagnosis.

Sinocare
caring for love