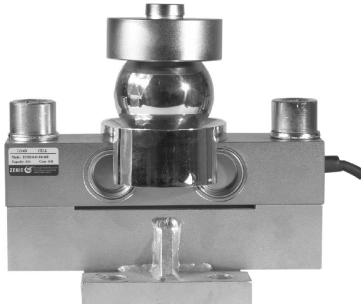



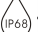
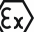
Capacity	Accuracy	Part-Number
10 t	C3	HM9B-C3-6t-12B
20 t	C3	HM9B-C3-9t-12B
25 t	C3	HM9B -C3-12t-12B
30 t	C3	HM9B -C3-15t-12B
40 t SE	C3	HM9B -C3-40tSE-12B
40 t	C3	HM9B -C3-40t-12B
50 r	C3	HM9B -C3-50t-12B

RoHS

Ex NEPSI



- Alloy steel IP68 duel shear beam load cell
- High accuracy
- Suitable for truck, track and other electronic weighing scales

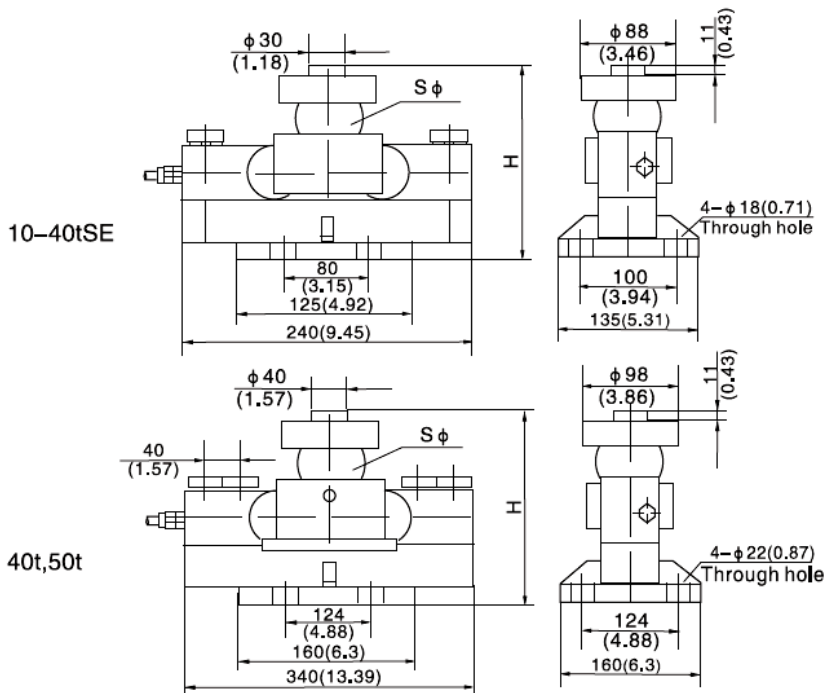




## Specification:

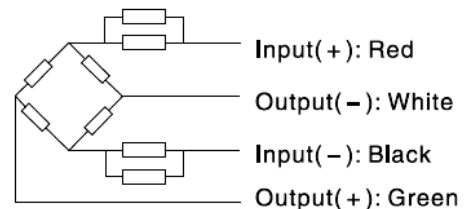
Accuracy class		OIML R60 C3		
Output sensitivity (= FS)	mV/V	2.0 ± 0.004		
Maximum capacity (E <sub>max</sub> )	t	10, 20, 25, 30, 40, 40 SE, 50		
Maximum number of load cell intervals (n <sub>LC</sub> )		3000		
Ratio of minimum LC verification interval Y = E <sub>max</sub> / v <sub>min</sub>		7500 - 15000 <sup>1</sup>		
Combined Error	%FS	± 0.020		
Minimum dead load	t	0		
Safe overload	of E <sub>max</sub>	150 %		
Ultimate overload	of E <sub>max</sub>	300 %		
Zero balance	of FS	< ± 1.5 %		
Excitation, recommended voltage	V	5 ~ 12		
Excitation maximum	V	18		
Terminal resistance, input	Ω	700 ± 7		
Terminal resistance, output	Ω	703 ± 4		
Insulation impedance	MΩ	≥5000 ( at 50VDC )		
Temperature range, compensated	°C	-10 ~ +40		
Temperature range, operating	°C	-35 ~ +65		
Element material		Alloy steel		
Ingress Protection (according to EN 60529)		IP68		
ATEX classification (optional)		II1G Ex ia II1C T4	II1D Ex iaD 20 T73°C	II3G nL II C T4

Note 1: Y-value is indicated on the load cell

## Outline Dimensions in mm



Capacity	10t	20t~40tSE	40t,50t
Dimension			
H	195 (7.68)	225 (8.86)	267 (10.51)
S φ	50 (1.97)	76 (2.99)	82 (3.22)



### Wiring:

- Shielded, 4 conductor cable : φ 5.5mm.
- Standard cable length: 12m.
- Cable type and cable length for customer's own application are available on request.
- Shield not connected to element.

Nr. 2009.11 HM9B Rev1