

Brass Body Ball Valve

SERIES 722



SEE VICTAULIC PUBLICATION 10.01 FOR DETAILS

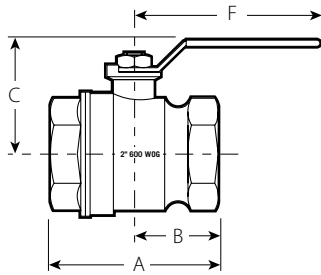
Series 722 Ball Valve is a standard port, female threaded end valve designed for up to 600psi/4135kPa (WOG) service. Valve body is constructed from forged brass. The ball is chrome plated brass and seals on TFE seats.

A hollow ball design eliminates unnecessary weight while maintaining flow and mechanical strength. TFE seats and washers reduce the friction coefficient which eases valve operation.

Valve sizes 1/2"/15mm and above are UL Listed at 175psi/1200kPa and FM Approved at 600psi/4135kPa for 1/2"/15mm and 3/4"/20mm sizes and 500psi/3450kPa for 1 - 2"/25 - 50mm sizes.



DIMENSIONS



Size		Dimensions – Inches/millimeters				C _v Values	Approx. Weight Each Lbs./ kg
Nominal Size In./mm	Actual Outside Diameter In./mm	A	B	C	F		
1/4	0.540	1.54	0.77	1.03	1.65	7	0.2
8	13.7	39	20	26	42		0.09
3/8	0.675	1.77	0.88	1.28	3.07	7	0.3
10	17.1	45	22	33	78		0.14
1/2 *	0.084	2.13	1.06	1.33	3.07	10	0.4
15	21.3	54	27	34	78		0.18
3/4 *	1.050	2.44	1.22	1.79	3.78	25	0.7
20	26.7	62	31	45	96		0.32
1 *	1.315	2.95	1.48	1.95	3.78	37	1.0
25	33.4	75	37	50	96		0.45
1 1/4 *	1.660	3.31	1.65	2.17	3.78	50	1.5
32	42.2	84	42	55	96		0.68
1 1/2 *	1.900	3.66	1.83	2.68	5.43	87	2.1
40	48.3	93	46	68	138		0.95
2 *	2.375	4.21	2.11	2.89	5.43	110	2.4
50	60.3	107	53	73	138		1.09

* UL Listed, FM Approved as noted in text above.

PERFORMANCE

C_v values for flow of water at +60°F/+16°C are shown in the table above.

$$\Delta P = \frac{Q^2}{C_v^2}$$

$$Q = C_v \times \sqrt{\Delta P}$$

Where:

Q = Flow (GPM)

ΔP = Pressure Drop (psi)

C_v = Flow Coefficient

JOB OWNER

System No. _____
Location _____

CONTRACTOR

Submitted By _____
Date _____

ENGINEER

Spec Sect _____ Para _____
Approved _____
Date _____

Brass Body Ball Valve

SERIES 722



SEE VICTAULIC PUBLICATION 10.01 FOR DETAILS

**MATERIAL SPECIFICATIONS****Body:** Forged Brass ASTM B-16**Ball:** Brass ASTM B-16, chrome plated**Stem:** Brass ASTM B-16, chrome plated**Seats:** (TFE) Tetrafluoroethylene, rated to +450°F/+232°C**Handle:** Carbon steel, zinc plated**Stem Nut:** Carbon steel, zinc plated**Stem Washer:** (TFE) Tetrafluoroethylene**O-Ring:** Fluoroelastomer**WARRANTY**

Refer to the Warranty section of the current Price List or contact Victaulic for details.

NOTE

This product shall be manufactured by Victaulic or to Victaulic specifications. All products to be installed in accordance with current Victaulic installation/assembly instructions. Victaulic reserves the right to change product specifications, designs and standard equipment without notice and without incurring obligations.

WORLD HEADQUARTERS

P.O. Box 31
Easton, PA 18044-0031 USA

4901 Kesslersville Road
Easton, PA 18040 USA

1-800-PICK-VIC (1-800-742-5842)
1-610-559-3300
1-610-250-8817 (fax)
pickvic@victaulic.com

UNITED STATES

1-800-PICK-VIC (1-800-742-5842)
1-610-250-8817 (fax)
pickvic@victaulic.com

CANADA

905-884-7444
905-884-9774 (fax)
viccanada@victaulic.com

EUROPE

32-9-381-15-00
32-9-380-44-38 (fax)
viceuro@victaulic.be

UK

44 (0) 1438741100
44 (0) 1438313883 (fax)
viceuro@victaulic.be

CENTRAL AND SOUTH AMERICA

1-610-559-3300
1-610-559-3608 (fax)
vical@victaulic.com

ASIA PACIFIC

86-21-58855151
86-21-58851298 (fax)
vicap@victaulic.com

MIDDLE EAST

971-4-883-88-70
971-4-883-88-60 (fax)

www.victaulic.com

WCAS-6HXL4R

UPDATED 2/06

08.15 1669 REV C

VICTAULIC IS A REGISTERED TRADEMARK OF VICTAULIC COMPANY. © 2006 VICTAULIC COMPANY. ALL RIGHTS RESERVED. PRINTED IN THE USA.

