

5IMPLE REASONS TO SWITCH



legrand

BELANKO™ / NEW RANGE OF WIRING DEVICES



 **legrand**®

# 5IMPLE REASONS TO SWITCH TO BELANKO™

With Belanko™, simplicity is beauty. Now, discover 5 good reasons why Belanko™ should be your choice for wiring devices.

IDEAL CHO1CE	02
NEAT PRE2ENTATION	04
EASY & SAF3 INSTALLATION	06
MORE FUNCTION4LITIES	08
WIDE AS5ORTMENT	12

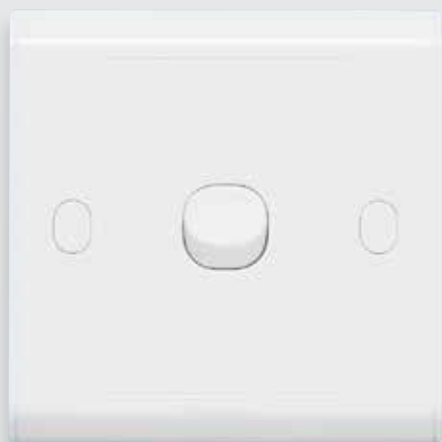
# IDEAL CHO1CE



With Belanko™, switches perform exactly the way you expect them to. Beyond performance, we give you a choice between large rockers and the conventional small one.



It is your choice. Either go with the small rockers that hold 1 to 6 gangs,  
or the large rockers that feature 1 to 4 gangs.



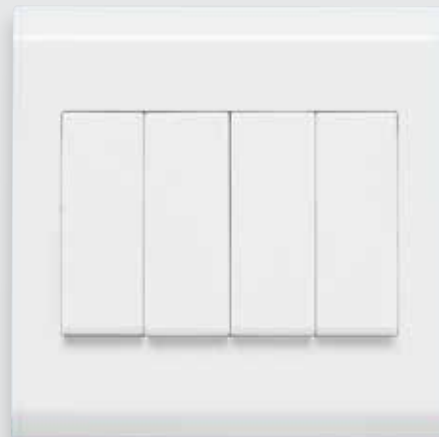
**FUNCTIONAL AND RELIABLE**  
1 gang switch with small rocker



**COMPACT AND VERSATILE**  
5 gang switch with small rocker



**CONTEMPORARY AND APPEALING**  
1 gang switch with large rocker



**AESTHETICS MEETS FUNCTION**  
4 gang switch with large rocker

---

## Colour Plates

Something more to go  
along with?



**SUBTLE BEIGE**  
2 gang switch with large rocker and  
beige plate



**DISTINCTIVE TAUPE**  
Double pole switch with red neon indicator  
and large rocker and taupe plate

# NEAT PRE<sup>2</sup>ENTATION



We know how important it is for professionals like you to deliver perfect installations fast – always. Because your goal is also our goal, we ensure that our switches are always neatly wrapped with a soft protection film.



You now enjoy peace of mind. Your switch stays clean and neat until it is delivered to the customer.



The soft protection film keeps the product safe from dust.



Only the soft protection film will get stained by the ongoing wall paintwork.



The result is a perfectly neat installation – every time.

# EASY & SAF<sup>3</sup> INSTALLATION



Fitting switches is probably only one of the many tasks that you have to undertake. By making sure that installation is safe and easy, you are left with more time to tackle other tasks.





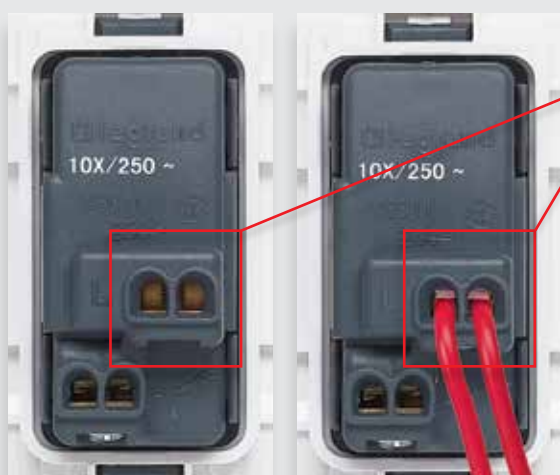
The safety features of Belanko™ wiring devices make installation both easy and safe.



Clear marking of terminals for easy identification and safe wiring



Double entry for each terminal facilitates wiring



Wires are held in place with the clamping plate. This reduces the risk of damaging wires. The combination of double entry and clamping plate ensures long term reliability of the connection.

## Certified Quality

Your safety is our top priority. That's why Belanko™ wiring devices are compliant with safety standards.



# MORE FUNCTION<sup>4</sup>LITIES



Need something extra? Belanko™ has just that.  
We provide additional functions to suggest just a few  
more possibilities to meet your everyday lifestyle needs.



For enhanced comfort, Belanko™ offers dimming solutions for complex lighting.



1000W Dimmer

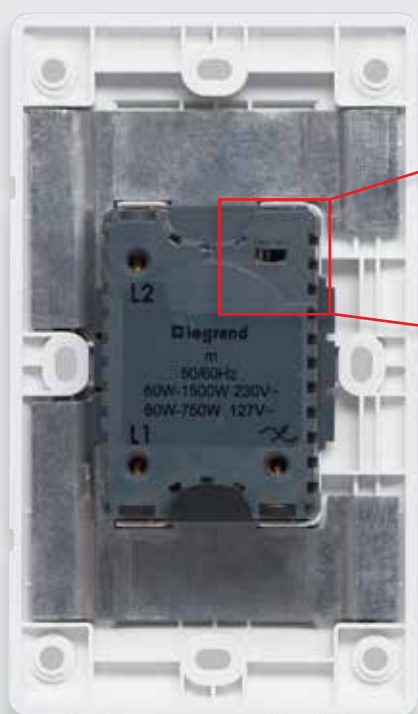


1500W Dimmer

#### 1000W and 1500W Dimmers

These new 2-way Push ON/OFF Rotary dimmers can be associated with a switch for remote ON/OFF control from another point in the installation.

They memorise the last light level set before switch-off – and when switched on again, light level will be restored as previously memorised.



#### Voltage Selection (for 1500W dimmers)

A rated voltage converting switch on the upper right part of the base allows you to select – 230V or 127V. Factory setting is 230V.



# MORE FUNCTION<sup>4</sup>LITIES

## 1500W dimmer

Ideal for upgrade or retrofit

With the 1500W dimmer, upgrading of existing installations is really easy. It can be fitted in either 1 gang or 2 gang boxes, so that there is no need to change boxes in case of retrofit.



## Safely connected to power – in different standards



13 A BS socket outlet, double pole, switched – whenever special safety is required



15 A US socket outlet, 2P + E



16 A German standard socket outlet, 2P + E

## Socket protection IP44



The splash-proof cover for socket protection ensures IP44 with or without plug engaged.



Single TV socket, female

## Get connected with TV, telephone and data sockets

Complete with TV, telephone and data sockets, Belanko™ not only keeps you connected to power but also to the rest of the world.



Double RJ 11 socket



Double RJ 45 socket

# WIDE AS50RTMENT



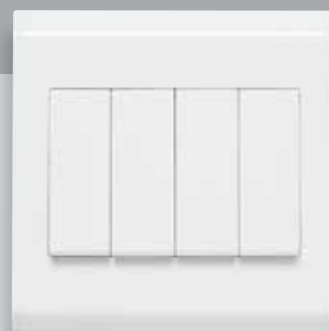
Architrave,  
1 gang, 1-way



5 gang switch



1 gang switch



4 gang switch



1500W Push ON/OFF  
Rotary dimmer



Fan control



Single TV socket, "F" type



Double RJ 11 telephone  
socket



Double RJ 45 data  
socket



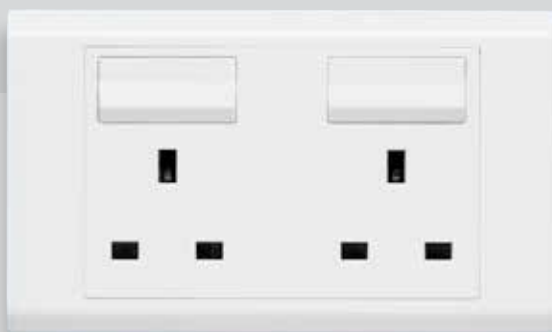
Push-button with bell symbol



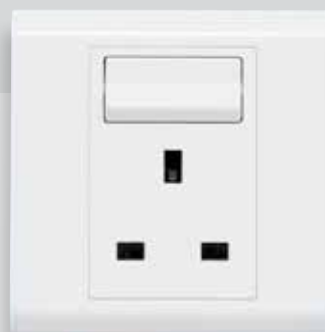
45 A Double pole switch



1000W Push ON/OFF  
Rotary dimmer



2 gang single pole BS switched socket outlet



1 gang BS switched  
socket outlet



Fused connection unit



Cable outlet

# PRODUCT CATALOGUE



## Belanko™

single pole switches and push-buttons, small rocker



6 171 00



6 171 08



6 171 15

Colour: White T084

Material: Thermoplastic with glossy finish

Dimensions: 86 x 86 x 9.5 mm (1 gang) / 86 x 146 x 9.5 mm (2 gang)

Supplied with 2 screws M3.5 for BS boxes

Pack	Cat.Nos	Single pole switches - small rocker	
		Conform to BS EN 60669-1 and SASO No LIC 204803	
		<b>10 AX - 250 V~</b>	
10	6 171 00		1 gang - 1-way switch
10	6 171 01		1 gang - 2-way switch
10	6 171 02		2 gang - 1-way switch
10	6 171 03		2 gang - 2-way switch
10	6 171 04		3 gang - 1-way switch
10	6 171 05		3 gang - 2-way switch
10	6 171 06		4 gang - 1-way switch
10	6 171 07		4 gang - 2-way switch
10	6 171 08		5 gang - 1-way switch
5	6 171 10		6 gang - 1-way switch

5	6 171 15		1 gang - 1-way
5	6 171 16		Bell push

10	6 171 11		Bell push
----	----------	--	-----------

## Belanko™

single pole switches and push-buttons, large rocker



6 170 00



6 170 06

Colour: White T084

Material: Thermoplastic with glossy finish

Dimensions: 86 x 86 x 9.5 mm (1 gang) / 86 x 146 x 9.5 mm (2 gang)

Supplied with 2 screws M3.5 for BS boxes

Pack	Cat.Nos	Single pole switches - large rocker	
		Conform to BS EN 60669-1 and SASO No LIC 204803	
		<b>10 AX - 250 V~</b>	
10	6 170 00		1 gang - 1-way switch
10	6 170 01		1 gang - 2-way switch
10	6 170 02		2 gang - 1-way switch
10	6 170 03		2 gang - 2-way switch
10	6 170 04		3 gang - 1-way switch
10	6 170 05		3 gang - 2-way switch
10	6 170 06		4 gang - 1-way switch
10	6 170 07		4 gang - 2-way switch
10	6 170 09		Intermediate switch
		<b>20 AX - 250 V~</b>	
10	6 170 20		1 gang - 1-way
10	6 170 21		1 gang - 2-way
10	6 170 22		2 gang - 1-way
10	6 170 23		2 gang - 2-way
10	6 170 11		Bell push

## Belanko™

double pole switches and cooker control unit



6 170 72



6 170 76

Colour: White T084

Material: Thermoplastic with glossy finish

Dimensions: 86 x 86 x 9.5 mm (1 gang) / 86 x 146 x 9.5 mm (2 gang)

Supplied with 2 screws M3.5 for BS boxes

Pack	Cat.Nos	Double pole switches
		Conform to BS EN 60669-1
		<b>20 A - 250 V~</b>
		Conform to SASO No LIC 204803
10	6 170 70	1 gang - 1-way switch + red neon indicator
10	6 170 71	1 gang - 1-way switch + red neon indicator + earth connection
10	6 170 72	1 gang - 1-way switch + red neon indicator + earth connection with "Water Heater" marking
		<b>32 A - 250 V~</b>
10	6 170 74	1 gang - 1-way switch + red neon indicator, white rocker
		<b>45 A - 250 V~</b>
		Conform to SASO No LIC 204803
10	6 170 75	1 gang - 1-way switch
10	6 170 76	1 gang - 1-way switch + red neon indicator
5	6 170 77	2 gang - 1-way vertical switch + red neon indicator

### Cooker Control Unit - 250 V

Conform to SASO No LIC 204830

5	6 170 78	45 A DP switch + red neon and 13 BS switched socket outlet + red neon
---	----------	-----------------------------------------------------------------------

## Belanko™

dimmers and ventilation control



6 170 31



6 170 33

Colour: White T084

Material: Thermoplastic with glossy finish

Dimensions: 86 x 86 x 9.5 mm (1 gang) / 86 x 146 x 9.5 mm (2 gang)

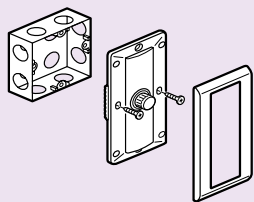
Supplied with 2 screws M3.5 for BS boxes

Pack	Cat.Nos	Dimmers
		Conform to BS EN 60669-1 and SASO No LIC 204803
1	6 170 30	600 W - 230 V 50 Hz 1 gang - 1-way 86 x 86 mm Rotary on/off dimmer
1	6 170 31	1000 W (230 V) - 500 W (127 V) 50/60 Hz 1 gang - 2-way 86 x 86 mm Push on/off and rotary dimmer
1	6 170 32	1500 W (230 V) - 750 W (127 V) 50/60 Hz 2 gang - 2-way 86 x 146 mm Push on/off and rotary dimmer Can be mounted on 1 gang or 2 gang boxes
		<b>Ventilation control</b>
		Conform to BS EN 60669-1 and SASO No LIC 204803
1	6 170 33	Fan control 250 V~ 50 Hz

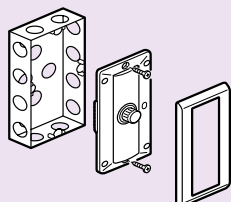
## Belanko™ dimmers

## Belanko™ ventilation control

### ■ Fixing in 1 or 2 gang boxes - Dimmer Cat.No 6 170 32 - 1500 W



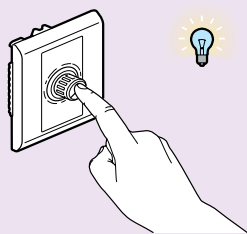
Preparation with 1-gang box



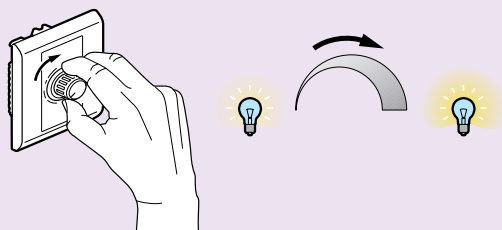
Preparation with 2-gang box

### ■ Choose your brightness adjustment - Dimmer Cat.Nos 6 170 31/0 32 - 1000 W / 1500 W

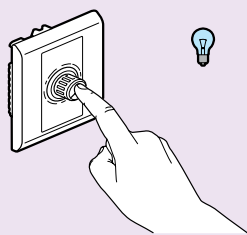
#### Push ON/OFF and rotary dimming



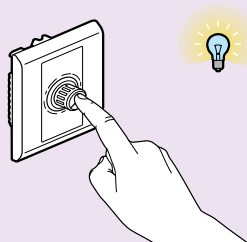
Push to turn ON



Rotate for brightness adjustment

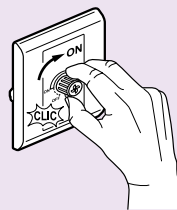


Push to turn OFF  
When pushed OFF, the dimmer memorizes the light level for the next switching ON

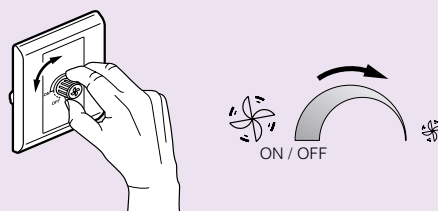


Push ON  
The light level will be restored as previously memorized

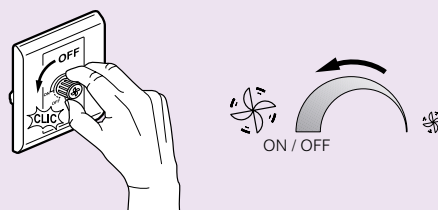
### ■ Ventilation control Cat.No 6 170 33



Rotate to turn ON  
When turned ON the fan control works at full capacity. This ensures that the whole ventilation system - fan included - is effectively ON.



Rotate to reduce the speed



Rotate to turn OFF  
Going back to full capacity before turning OFF ensures that the whole ventilation system - and not only the fan - will be effectively switched OFF

# Belanko™

television, telephone, data sockets and hotel equipment



Colour: White T084

Material: Thermoplastic

Dimensions: 86 x 86 x 9.5 mm (1 gang) / 86 x 146 x 9.5 mm (2 gang)

Supplied with 2 screws M3.5 for BS boxes

Pack	Cat.Nos	Television sockets
		Conform to SASO No LIC 204834
1	6 171 24	2 gang SCV outlet + TV-FM type F
10	6 171 21	Single TV socket, female
10	6 171 20	Single TV socket, "F" type
10	6 171 23	Double TV socket, female + "F" type

Pack	Cat.Nos	Telephone sockets
		Conform to SASO No LIC 204834
10	6 170 99	Telephone connection block 10 connections
10	6 170 97	RJ 11 socket
10	6 170 98	Double RJ 11 socket

Pack	Cat.Nos	Data sockets
		Conform to SASO No LIC 204834
10	6 170 90	RJ 45 Cat.5e UTP
10	6 170 91	RJ 45 Cat.6 UTP
10	6 170 92	Double RJ 45 Cat.6 UTP

Pack	Cat.Nos	Multistandard socket outlet
		Conform to BS 1363-2 and SASO No LIC 204830
10	6 170 67	16 A - 250 A / 15 A - 127 V

Pack	Cat.Nos	Shaver socket
		Conform to BS 61558 and SASO No LIC 204837
1	6 170 68	115/230 V - 20 VA - 50/60 Hz Surface or flush-mounting, back box to be min. 47 mm deep - 2 gang

Pack	Cat.Nos	Security switch
		1 A resistive - 250 V~ Panic button
1	6 170 19	

Pack	Cat.Nos	Key card switch
		16 A - 230 - 50 Hz Time delay of approx. 30s after card removal
1	6 170 12	

Pack	Cat.Nos	Hotel bedroom call indicators
		2 settings : - Do not disturb - Please clean the room
10	6 170 13	Indicator lamp + bell push Installed in the corridor, display calls
10	6 170 14	Internal control unit Installed in the room, allows the user to select desired setting

# Belanko™

socket outlets, fused connection units



6 170 41



6 170 46



6 170 65



6 170 81

Colour: White T084

Material: Thermoplastic with glossy finish

Dimensions: 86 x 86 x 9.5 mm (1 gang) / 86 x 146 x 9.5 mm (2 gang)

Supplied with 2 screws M3.5 for BS boxes

Pack	Cat.Nos	British Standard socket outlets	
		<b>13 A - 250 V~</b>	Conform to BS 1363-2 and SASO No LIC 204830
10	6 170 40		1 gang unswitched
5	6 170 45		2 gang unswitched
10	6 170 41		1 gang single pole switched
5	6 170 46		2 gang single pole switched
10	6 170 42		1 gang single pole switched + neon
5	6 170 47		2 gang single pole switched + neon
10	6 171 41		1 gang single pole switched with external rocker
5	6 171 46		2 gang single pole switched with inboard rockers
5	6 170 49		2 gang single pole switched with red cover + neon
10	6 170 43		1 gang double pole switched
5	6 170 48		2 gang double pole switched
		<b>15 A - 250 V~</b>	Conform to BS 546
10	6 170 50		1 gang unswitched
10	6 170 51		1 gang single pole switched
10	6 170 52		1 gang single pole switched + neon

Pack	Cat.Nos	British Standard socket outlets(continued)	
10	6 170 54		1 gang single pole switched
		<b>Euro/US socket outlets - 10 A - 250 V~ / 15 A - 127 V~</b>	
10	6 170 60		1 gang - 2P
10	6 170 61		1 gang - 2P + 10 AX switch
10	6 170 62		1 gang - 2 x 2P
10	6 170 63		1 gang - 2P+E
		<b>US socket outlet - 15 A - 127 V~</b>	
10	6 170 65		1 gang - 2P+E
		<b>German Standard socket outlet 16 A, 2P+E</b>	Shuttered with child protection
10	6 170 66		1 gang
		<b>Fused connection units</b>	
		<b>13 A</b>	Conform to BS 1363-4 and SASO No LIC 204803
10	6 170 80		Unswitched + cord outlet
10	6 170 81		Switched + cord outlet
10	6 170 82		Switched + neon + cord outlet

## Belanko™

fused connection units (continued)  
cable outlets, accessories, surface-mounting boxes



6 171 31 + 6 170 42



6 133 51

Pack	Cat.Nos	Cable outlets
10	6 170 85	20 A - 250 V~
10	6 170 86	45 A - 250 V~
100	6 171 30	Screw caps
2	6 171 31	Splash-proof cover Mainly for socket protection IP44 with or without plug engaged Space inside : 86 x 86 mm (for Belanko, Mallia and Synergy products)
10	6 133 49	Architrave surface box
8	6 133 50	1 gang surface box - 86 x 86 mm
4	6 133 51	2 gang surface box - 86 x 146 mm

## Belanko™

cover plates, blanking plates



6 171 51



6 171 55

Pack	Cat.Nos	Cover
5	6 171 50	1 gang Horizontal beige
5	6 171 51	Vertical beige
5	6 171 55	Horizontal taupe
5	6 171 56	Vertical taupe
5	6 171 52	2 gang Horizontal beige
5	6 171 53	Vertical beige
5	6 171 57	Horizontal taupe
5	6 171 58	Vertical taupe
10	6 171 28	Blanking plates Conform to BS 5733 and SASO No LIC 204803 1 gang
5	6 171 29	2 gang

## Notes



**Legrand Singapore Showroom**

15 Jalan Kilang Barat

#07-05 Frontech Centre

Singapore 159357

Tel: + 65 6861 2234

Fax: + 65 6416 1580

Email: [customerhub.sg@legrand.com.sg](mailto:customerhub.sg@legrand.com.sg)

[www.legrand.com.sg](http://www.legrand.com.sg)